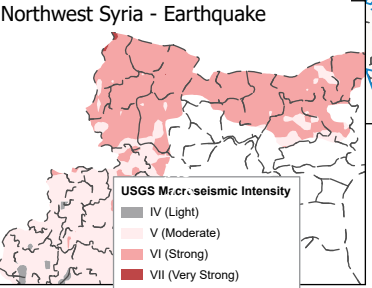
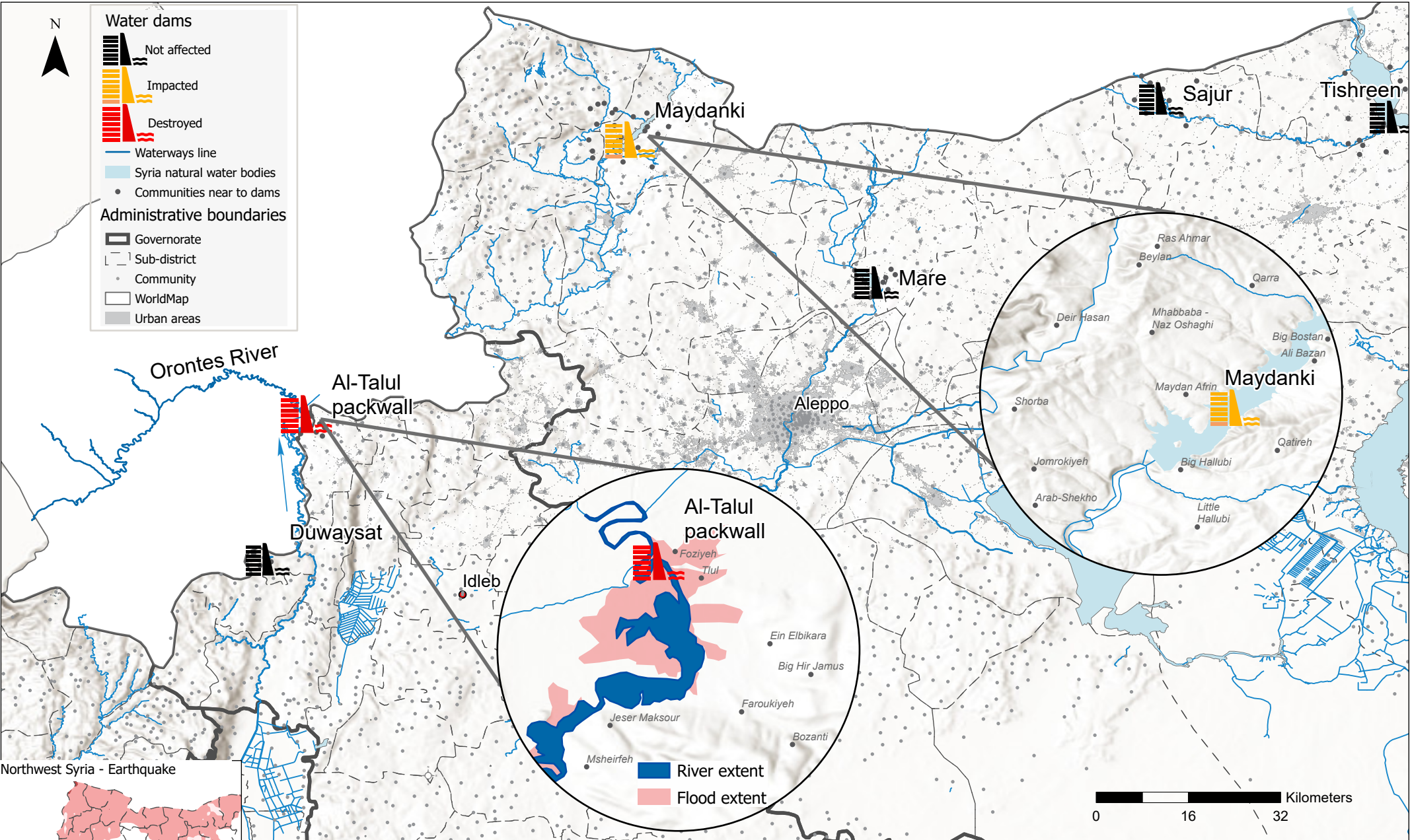


Northwest Syria - Earthquake Exposed Dams

Macroseismic Intensity VI (Strong) or Higher during 7.8 and 7.5 Magnitude Earthquakes on 6 Feb 2023

For Humanitarian Use Only
Production date : 10 Feb 2023



Methodology:
The map shows the highest macroseismic intensity reached during the 7.8 magnitude Earthquake 2023-02-06 04:17:35 (UTC+03:00) and 7.5 magnitude Earthquake 2023-02-06 13:24:49 (UTC+03:00). Dams and the surrounding communities within the zone VI (Strong) or higher were identified as exposed.

Data sources:
 - USGS Macroseismic Intensity ShakeMaps
 - OCHA Administrative boundaries and communities
 - ©OpenStreetMap Contributors Dams location
 - Affected dams: REACH field team, <https://www.arabnews.com/node/2248061/middle-east>
<https://english.enabbaladi.net/archives/2023/02/turkey-syria-earthquake-maydanki-dam-cracked-what-is-the-consequence/>
 - Coordinate System: GCS WGS 1984

Note: Data, designations and boundaries contained on this map are not warranted to be error-free and do not imply acceptance by REACH partners, associates or donors mentioned on this map.