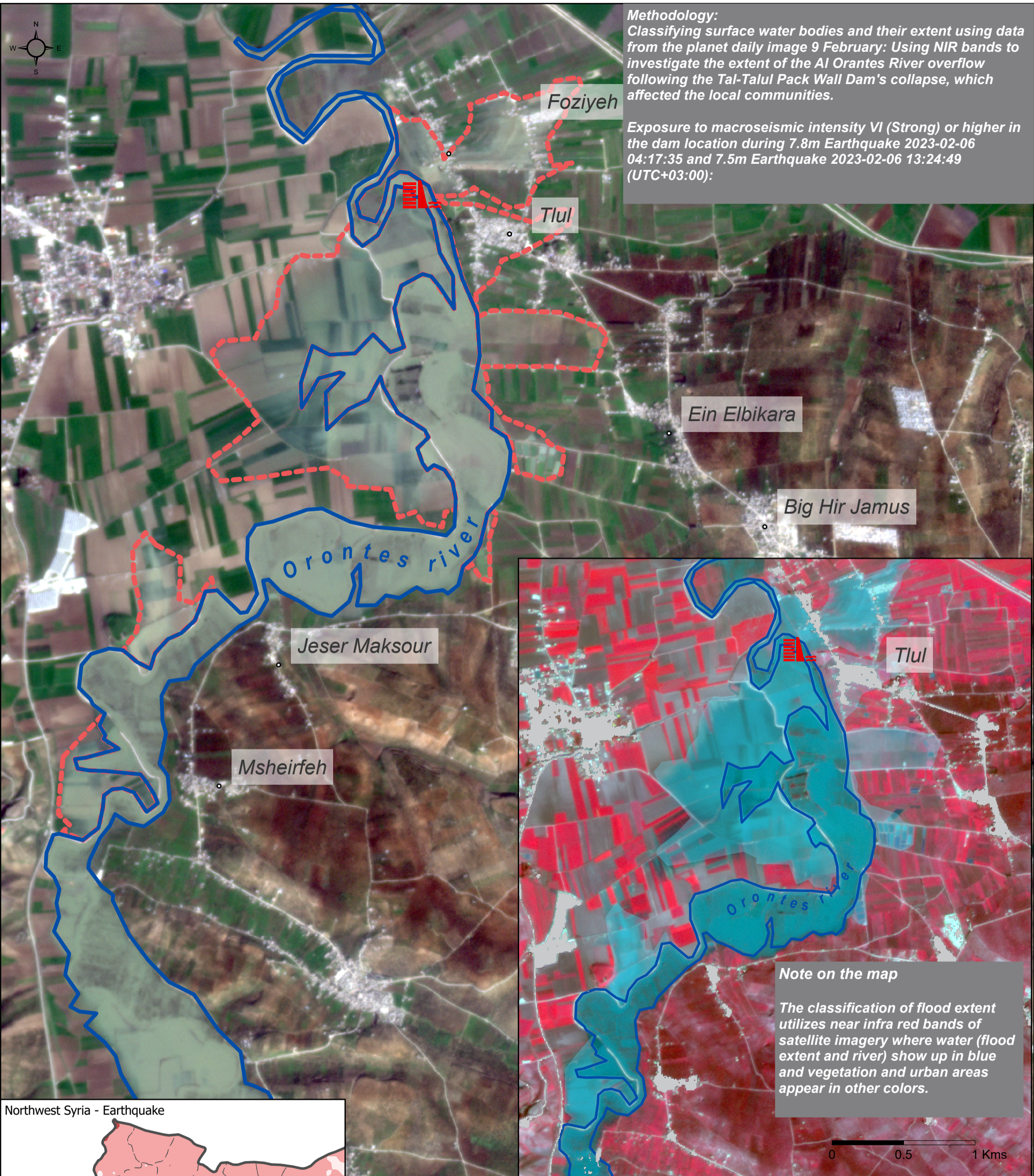


Northwest Syria - Earthquake Exposed Dams

Al Talul packwall dam collapse - 9 Feb 2023

For Humanitarian Use Only
Production date : 10 Feb 2023



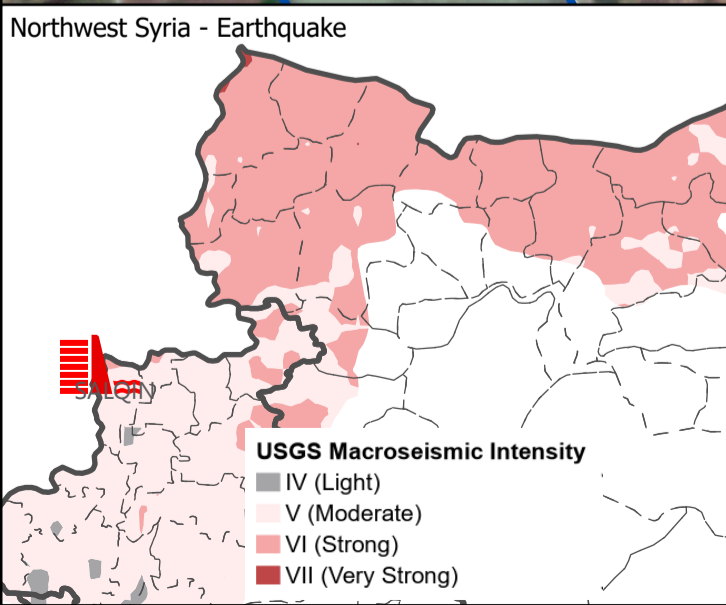
Methodology:
Classifying surface water bodies and their extent using data from the planet daily image 9 February: Using NIR bands to investigate the extent of the Al Orantes River overflow following the Tal-Talul Pack Wall Dam's collapse, which affected the local communities.

Exposure to macroseismic intensity VI (Strong) or higher in the dam location during 7.8m Earthquake 2023-02-06 04:17:35 and 7.5m Earthquake 2023-02-06 13:24:49 (UTC+03:00):

Note on the map

The classification of flood extent utilizes near infra red bands of satellite imagery where water (flood extent and river) show up in blue and vegetation and urban areas appear in other colors.

0 0.5 1 Kms



- Legend**
- Nearest communities
 - River extent
 - Flood extent
 - Al Talul packwall dam
 - Urban areas
 - Roads**
 - primary
 - secondary

Data sources:-
Satellite imagery: 3m resolution Planet Scope scene daily imagery 9 Feb 2023
USGS Macroseismic Intensity ShakeMaps-
OCHA Administrative boundaries and communities-
©OpenStreetMap Contributors Dams location- Affected dams: REACH field team, <https://www.arabnews.com/node/2248061/middle-east>
Coordinate System: GCS WGS 1983
Contact: reach.mapping@impact-initiatives.org

Note: Data, designations and boundaries contained on this map are not warranted to be error-free and do not imply acceptance by the REACH partners, associates, donors mentioned on this map.