

SOUTH SUDAN - JUBA - Inter-Sectoral Vulnerability Map

Participatory Mapping Exercise

For Humanitarian Purposes Only

Production date: 05/05/2020

Estimated population density/level of congestion - on scale of 1 (low density/congestion) to 4 (high density/congestion)



Neighbourhood Boundaries
Water Trucking Price (approx.)

Health
Hospital
Clinic
Pharmacy
Doctor

Markets
Market

Income/Unemployment
High Income
Low Income/High Unemployment

Rent
High

IDPs
Presence of IDPs

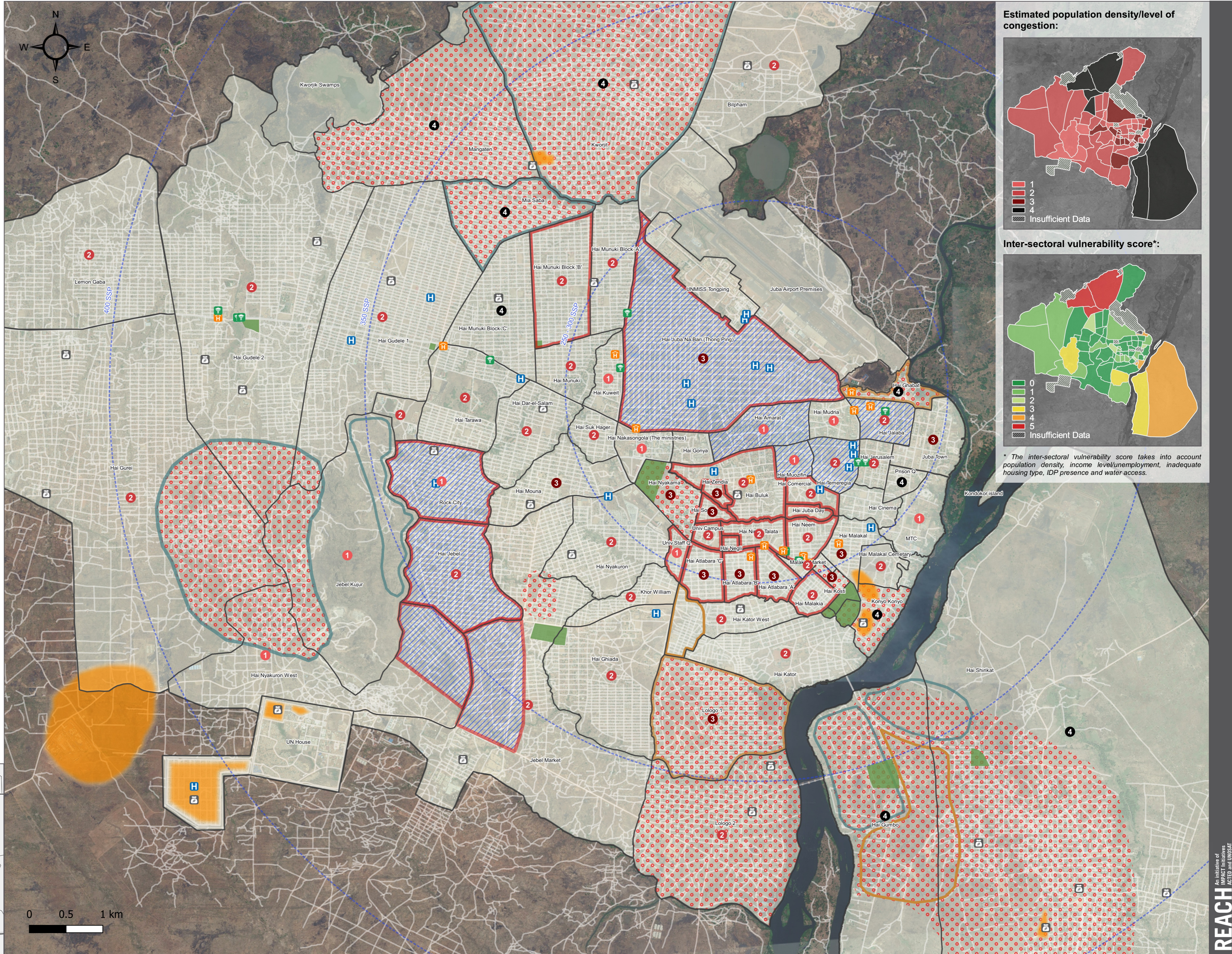
Housing Type
Makeshift
Tukul

Distribution
WFP Distribution Points
(As of March 2020)

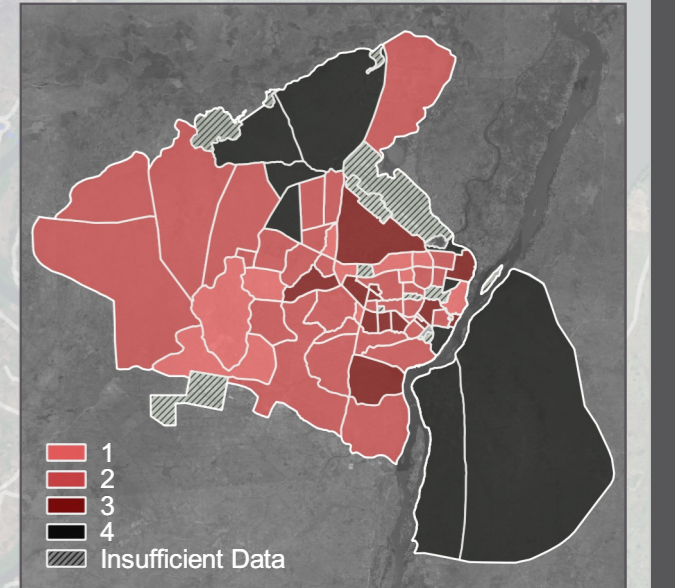
Methodology:
In order to inform the COVID-19 response in South Sudan and in particular in Juba city, this map presents a number of inter-sectoral indicators that may identify areas of concern, including population density, socio-economic conditions, access to markets and water. This map is only based on indicative data, gathered through a participatory mapping exercise with seven participants on 09/04/2020. Findings were then verified by three key informants knowledgeable of specific neighbourhoods on 28/04/2020. As such, this map should be considered as only a first step towards gaining a better understanding of particular vulnerabilities in Juba city. More work is needed to collect additional information and apply complementary methodologies.

Data Source:
Health facilities: WHO, Health Facilities Master List, 2016.
Disclaimer: information may be inaccurate/out-of-date.
Distribution points: WFP, March 2020.
Imagery: Google Earth, 2019.

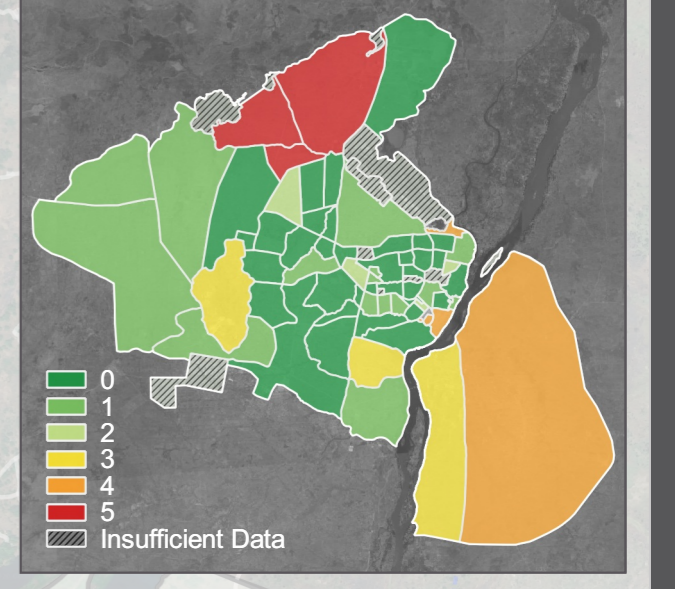
Coordinate System: WGS 84 / UTM Zone 29N
File: REACH_SSD_Map_AoK_Juba_City_Inter-Sectoral_Vulnerabilities_Participatory_05MAY2020_A2
Contact: south.sudan@reach-initiative.org



Estimated population density/level of congestion:



Inter-sectoral vulnerability score*:



* The inter-sectoral vulnerability score takes into account population density, income level/unemployment, inadequate housing type, IDP presence and water access.

