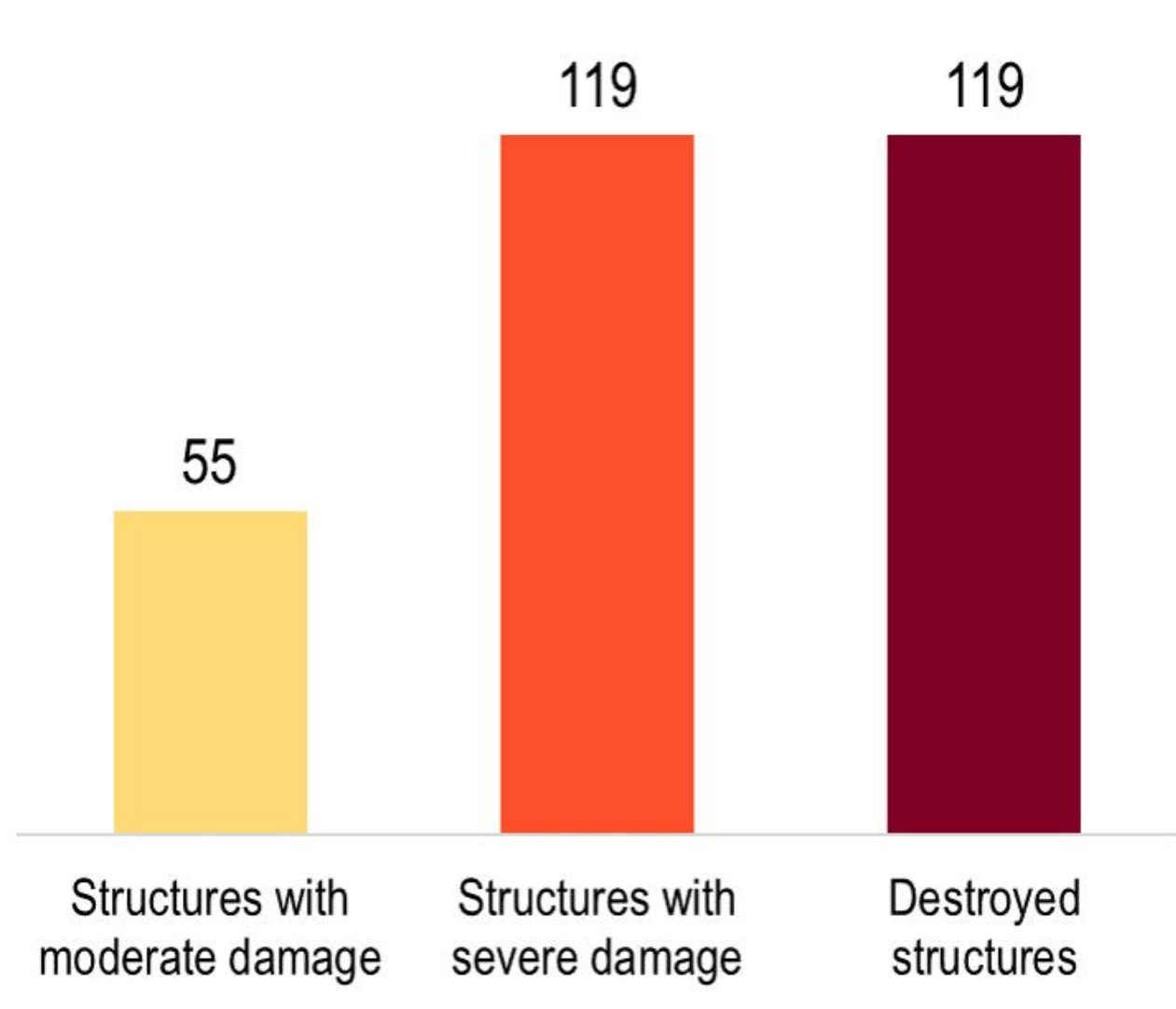


Kafr Batna Summary

21% of Structures Damaged or Destroyed

Structure count by damage severity



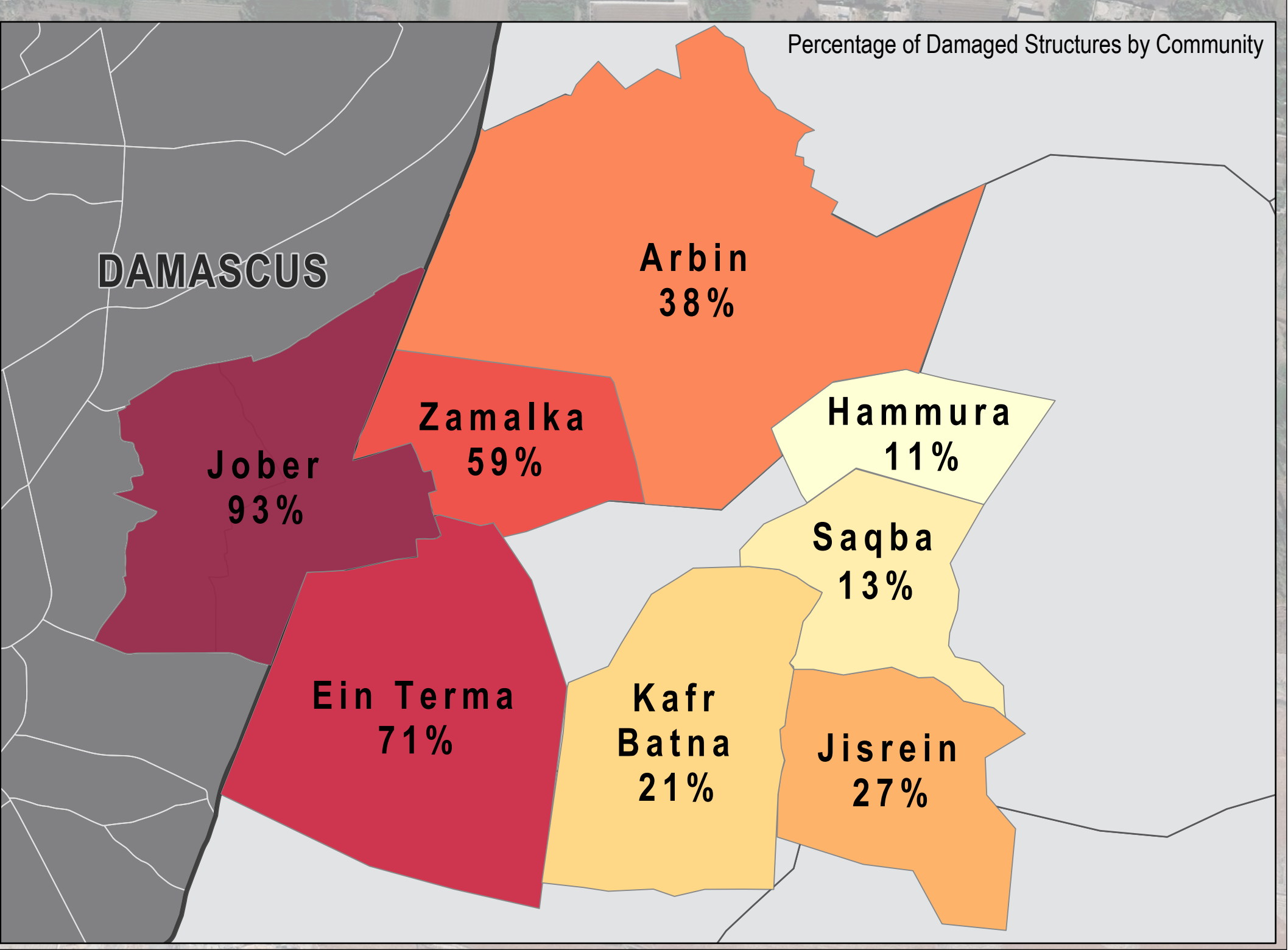
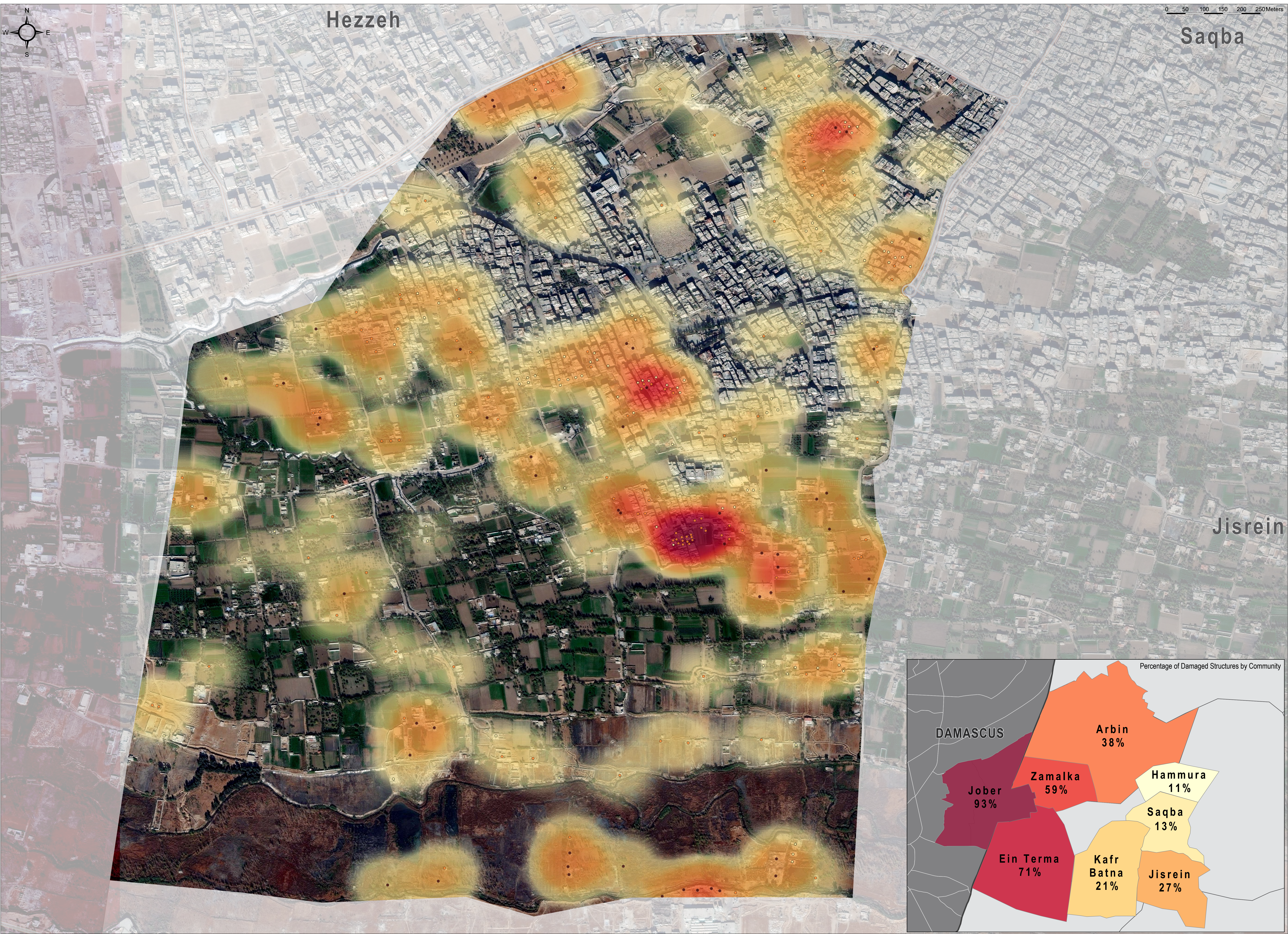
20,500 total population
of which 14,000 are IDPs

50-74% of preconflict population displaced
from community

26-50% of remaining population are female

Kafr Batna is a community located in central Eastern Ghouta, an agricultural region east of Damascus that has been classified by the United Nations as besieged since 2013. Of the ten communities that REACH assesses in Eastern Ghouta, Kafr Batna is one of only four that reportedly has a pre-conflict hospital. The hospital is still functioning. Mobile clinics/field hospitals and informal emergency care points are also reportedly operating in the community. In November 2017, a field hospital in Kafr Batna that is supported by Medecins Sans Frontieres (MSF) was reportedly hit and sustained some structural damage. In addition to the above mentioned medical facilities, there are pre-conflict primary, secondary, and high schools in Kafr Batna, but facilities were reportedly shut during the month of November 2017 across Eastern Ghouta due to the risk of shelling, and one was struck according to Community Representatives. However, official confirmation of this specific incident was not able to be obtained. Meanwhile, the water and electricity networks have been unavailable in the community since assessments began in June 2016.

Data source:
The above data was collected by REACH initiative in late December 2017 (or in previous assessed months when specified) using the Community Profiles methodology, in which information is gathered from Community Representatives (CRs) residing within assessed communities who have sector-specific knowledge. Findings were triangulated through secondary sources, including humanitarian reports, and news and social media monitoring.
<http://www.msf.org/en/article/syria-medical-services-stretched-beyond-limit-after-shelling-east-ghouta>



Damage Severity Density



Structure Damage Class

- Destroyed
- Severe Damage
- Moderate Damage

Satellite Data (1): WorldView-3 from 03 December 2017
Copyright: DigitalGlobe, Inc
Source: US Department of State, Humanitarian Information Unit, NextView License
Road Data: OpenStreetMap
Admin Data: UN OCHA
Analysis: UNITAR-UNOSAT
Production: REACH Initiatives

Satellite Data (2): WorldView-2 from 20 November 2017
Copyright: DigitalGlobe, Inc
Source: US Department of State, Humanitarian Information Unit, NextView License

Note: Data, designations and boundaries contained on this map are not warranted to be error-free and do not imply acceptance by the REACH partners, associates or donors mentioned on this map.

* Severity calculated based on density of damaged infrastructure and weighted by scale of damaged based on; destroyed, severely damaged, or moderate damage.