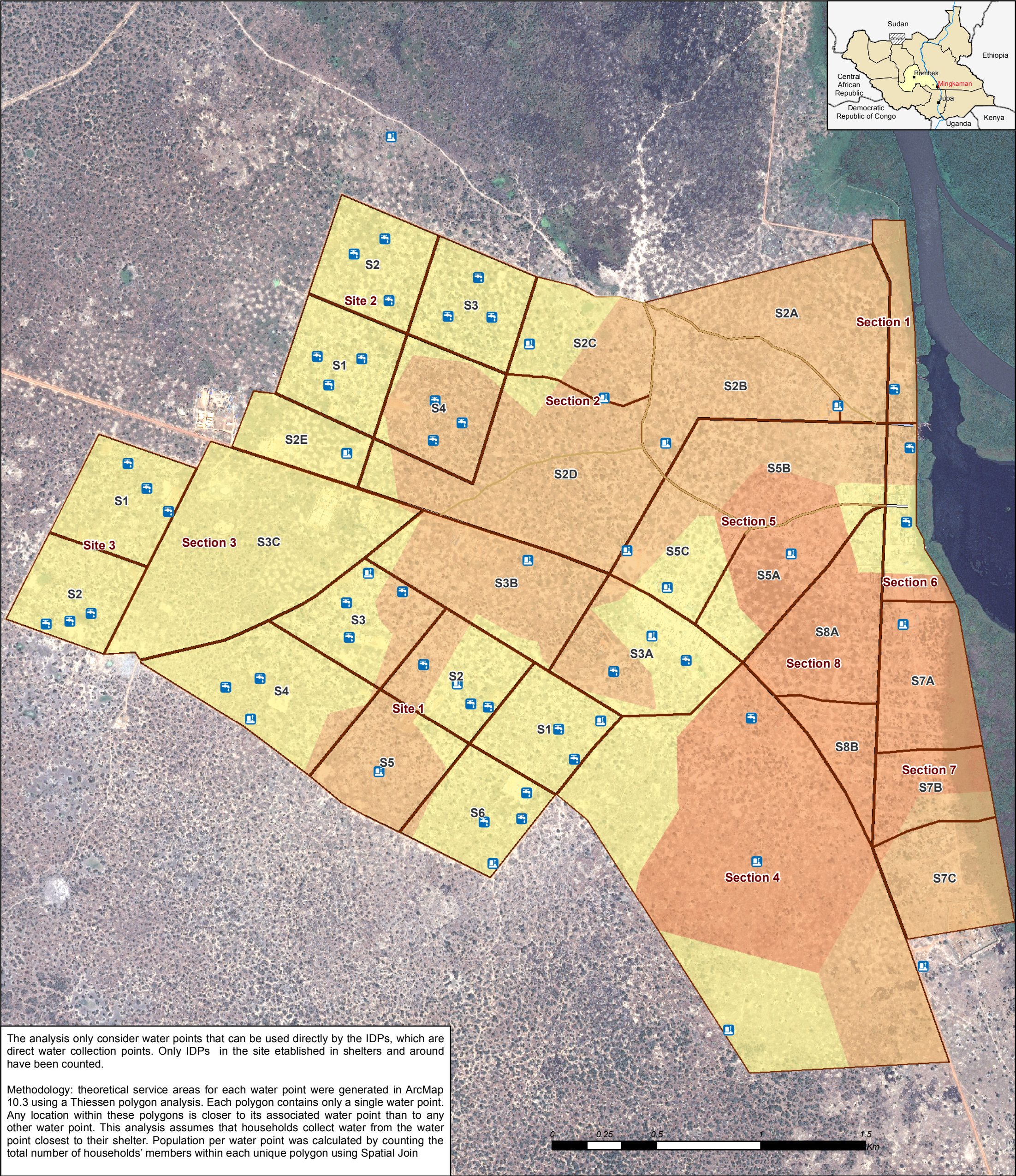


# South Sudan - Lakes State, Awerial County

## Population per water point in the established site of Mingkaman informal settlement



**Site structure**

- Site structure
- Site Main division
- Site Sub-division

**WASH facilities**

- handpump
- tapstand

**Population per waterpoint**

- 0 - 1000
- 1001 - 2000
- 2001 - 4000

Image: ©CNES\_2015, distribution AIRBUS DS, France, all rights reserved, 16.12.2015  
Site facilities: Oxfam, ACTED (maintained by RWASSA); Roads: UNOPS  
Coordinate System: WGS 1984 UTM zone 36N  
Contact: south.sudan@reach-initiative.org  
REACH\_SSD\_Map\_Awerial\_WashandPopDensityDensity\_Camp  
\_MingkamanSite\_15January2016\_A3  
Note: Data, designations and boundaries contained on this map are not warranted to be error-free and do not imply acceptance by the REACH partners, associated, donors mentioned on this map.

**Funded by**

