

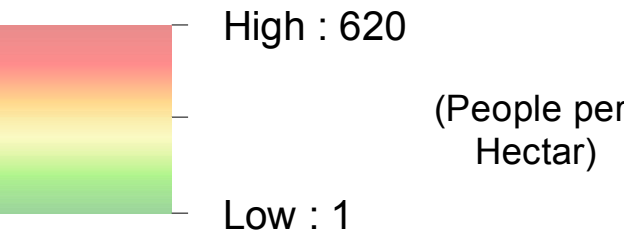


# IRAQ - Erbil Governorate - Kawergosk Camp

Population Denisty - June 2015

For Humanitarian Purposes Only  
Production date : 9 August 2015

## Population Density



## Camp Infrastructure

- Camp Delineation
- Fence
- Unoccupied Area
- Office / Facility
- Entrance
- Camp Management
- NGO Office
- Mosque
- Community Service
- Community Area
- Shop
- Bakery
- Fuel Depot
- Borehole

GPS Coordinates  
of Camp Location:  
Longitude: 43° 48' 39.84" E  
(43.811067)  
Latitude: 36° 20' 40.616" N  
(36.344616)

Thematic Data: 17 June 2015 - REACH  
Administrative boundaries: GADM  
Background imagery:  
02/05/2014 DigitalGlobe  
Projection: WGS 1984 UTM Zone 38N

Contact : [iraq@reach-initiative.org](mailto:iraq@reach-initiative.org)  
File: IRQ\_Map\_Kawergosk\_CampSweepIndicators\_17Jun2015

Note: Data, designations and boundaries  
contained on this map are not warranted to be  
error-free and do not imply acceptance by the  
REACH partners, associates or donors  
mentioned on this map.





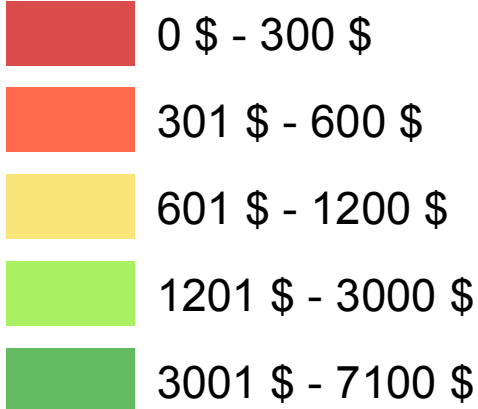


# IRAQ - Erbil Governorate - Kawergosk Camp

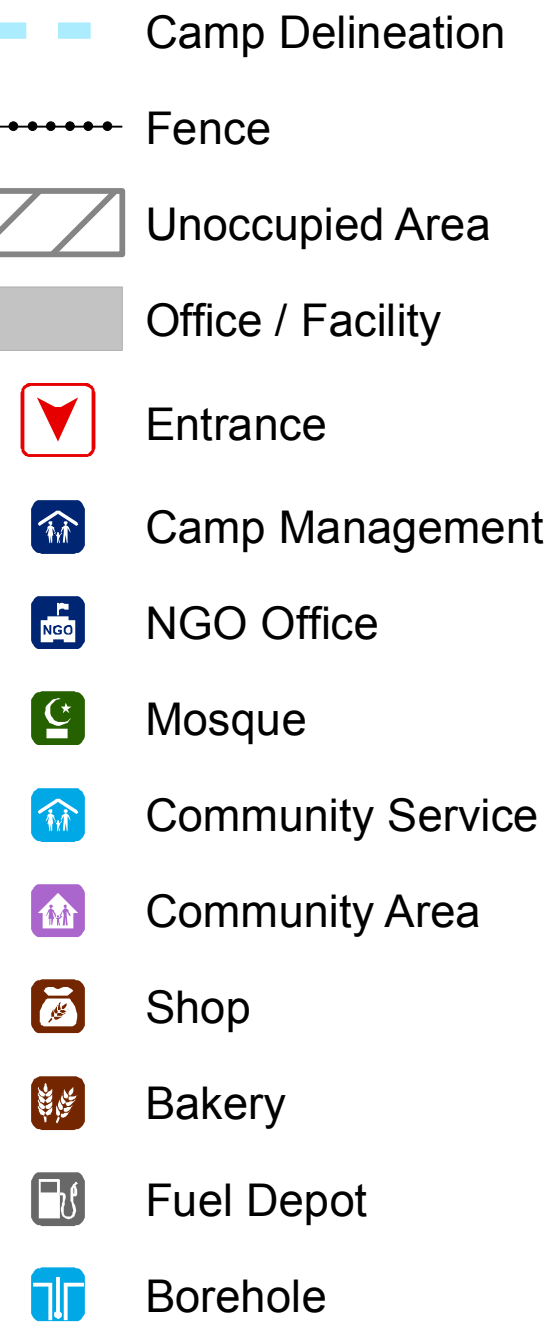
Monthly Income - June 2015

For Humanitarian Purposes Only  
Production date : 9 August 2015

## Monthly Income in USD



## Camp Infrastructure



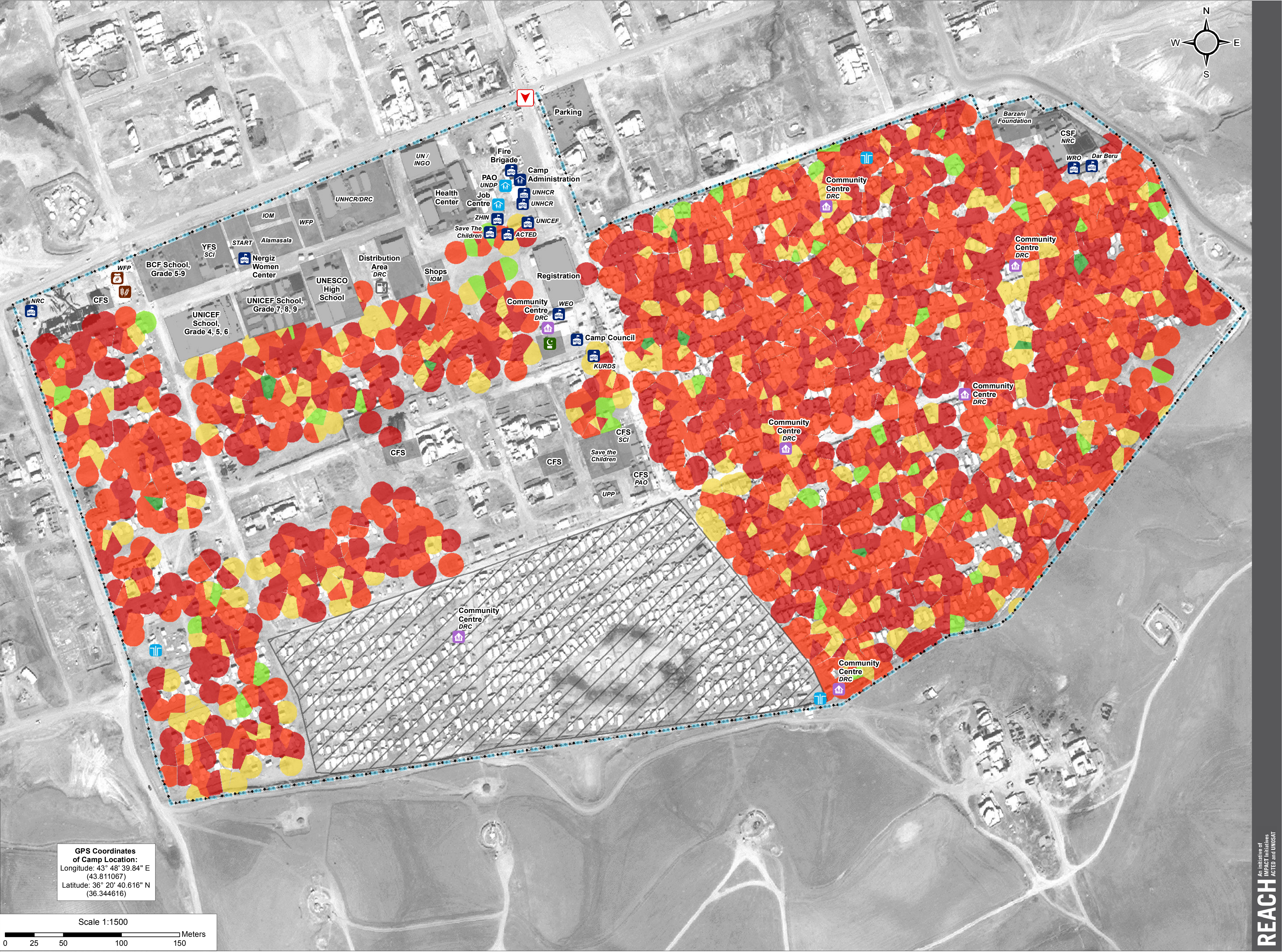
GPS Coordinates  
of Camp Location:  
Longitude: 43° 48' 39.84" E  
(43.811067)  
Latitude: 36° 20' 40.616" N  
(36.344616)

**Note:**  
Polygons representing households are generated by the ArcToolbox tool 'Create Thiessen Polygons' using the location recorded at each assessment.  
The polygons created are a spatial representation of the household area not a defined boundary of a household.

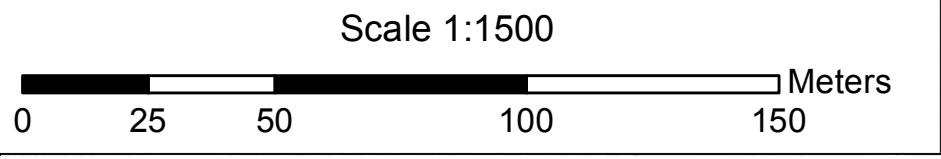
**Data Sources:**  
Thematic Data: 17 June 2015 - REACH  
Administrative boundaries: GADM  
Background imagery: 02/05/2014 DigitalGlobe  
Projection: WGS 1984 UTM Zone 38N

Contact : [iraq@reach-initiative.org](mailto:iraq@reach-initiative.org)  
File: IRQ\_Map\_Kawergosk\_CampSweepIndicators\_17Jun2015

**Note:** Data, designations and boundaries contained on this map are not warranted to be error-free and do not imply acceptance by the REACH partners, associates or donors mentioned on this map.



GPS Coordinates  
of Camp Location:  
Longitude: 43° 48' 39.84" E  
(43.811067)  
Latitude: 36° 20' 40.616" N  
(36.344616)







# IRAQ - Erbil Governorate - Kawergosk Camp

For Humanitarian Purposes Only  
Production date : 9 August 2015

## Shelter Types - June 2015

### Shelter Type

- Permanent Shelter
- Tent With Block
- Tent Without Block

### Camp Infrastructure

- Camp Delineation
- Fence
- Unoccupied Area
- Office / Facility
- Entrance
- Camp Management
- NGO Office
- Mosque
- Community Service
- Community Area
- Shop
- Bakery
- Fuel Depot
- Borehole

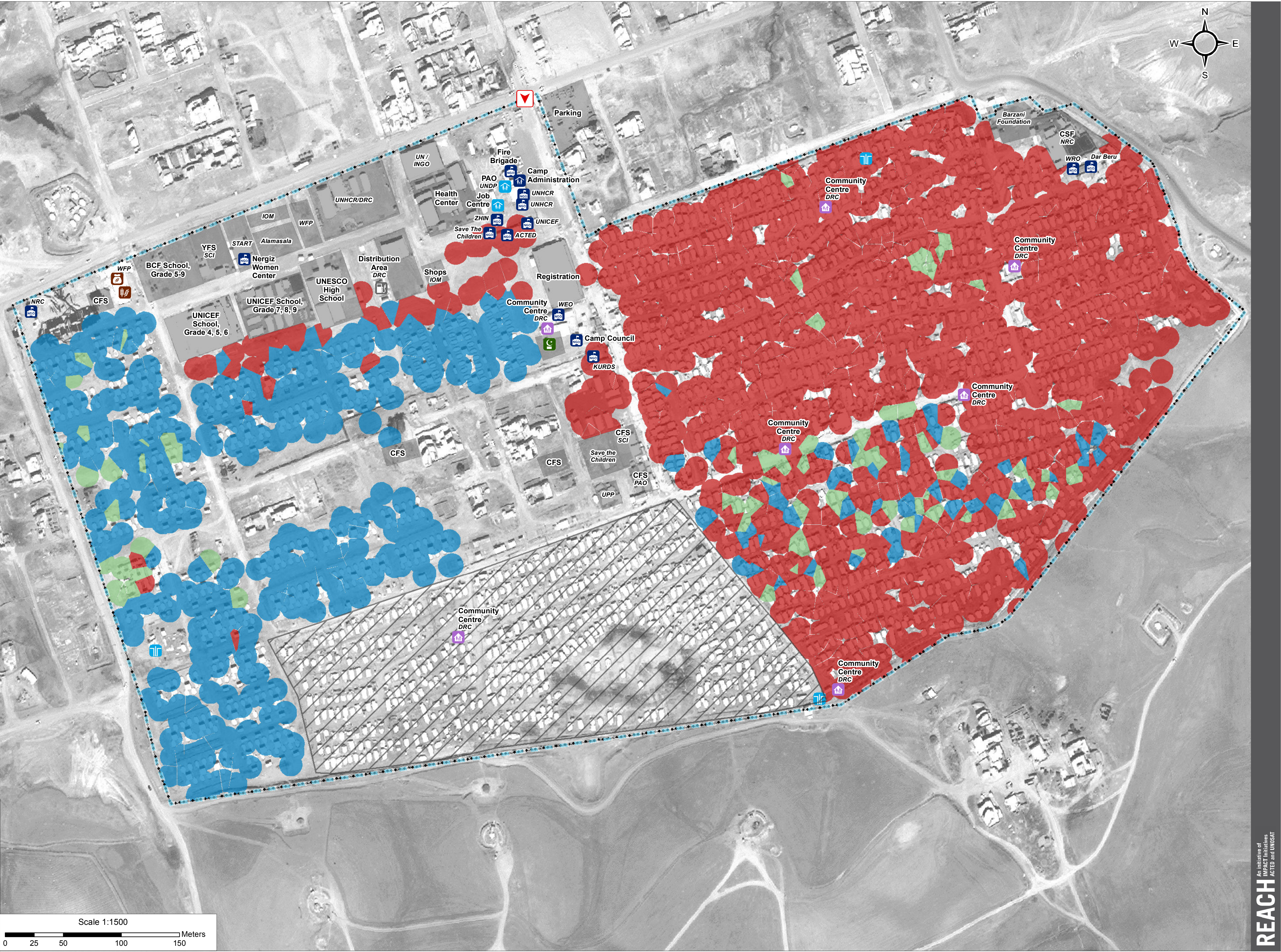
GPS Coordinates  
of Camp Location:  
Longitude: 43° 48' 39.84" E  
(43.811067)  
Latitude: 36° 20' 40.616" N  
(36.344616)

**Note:**  
Polygons representing households are generated by the ArcToolbox tool 'Create Thiessen Polygons' using the location recorded at each assessment.  
The polygons created are a spatial representation of the household area not a defined boundary of a household.

**Data Sources:**  
Thematic Data: 17 June 2015 - REACH  
Administrative boundaries: GADM  
Background imagery: 02/05/2014 DigitalGlobe  
Projection: WGS 1984 UTM Zone 38N

Contact : [iraq@reach-initiative.org](mailto:iraq@reach-initiative.org)  
File: IRQ\_Map\_Kawergosk\_CampSweepIndicators\_17Jun2015

**Note:** Data, designations and boundaries contained on this map are not warranted to be error-free and do not imply acceptance by the REACH partners, associates or donors mentioned on this map.







# IRAQ - Erbil Governorate - Kawergosk Camp

Primary Livelihood - June 2015

For Humanitarian Purposes Only  
Production date : 9 August 2015

## Primary Livelihood

- Cash Remittances
- Food Assistance
- Humanitarian Assistance
- Low Skill Service
- No Livelihood
- Renting Property
- Retail Trade
- Skilled Service Labour
- Trade Vocation

## Camp Infrastructure

- Camp Delineation
- Fence
- Unoccupied Area
- Office / Facility
- Entrance
- Camp Management
- NGO Office
- Mosque
- Community Service
- Community Area
- Shop
- Bakery
- Fuel Depot
- Borehole

**Note:**  
Polygons representing households are generated by the ArcToolbox tool 'Create Thiessen Polygons' using the location recorded at each assessment.  
The polygons created are a spatial representation of the household area not a defined boundary of a household.

**Data Sources:**  
Thematic Data: 17 June 2015 - REACH  
Administrative boundaries: GADM  
Background imagery: 02/05/2014 DigitalGlobe  
Projection: WGS 1984 UTM Zone 38N

Contact : [iraq@reach-initiative.org](mailto:iraq@reach-initiative.org)  
File: IRQ\_Map\_Kawergosk\_CampSweepIndicators\_17Jun2015

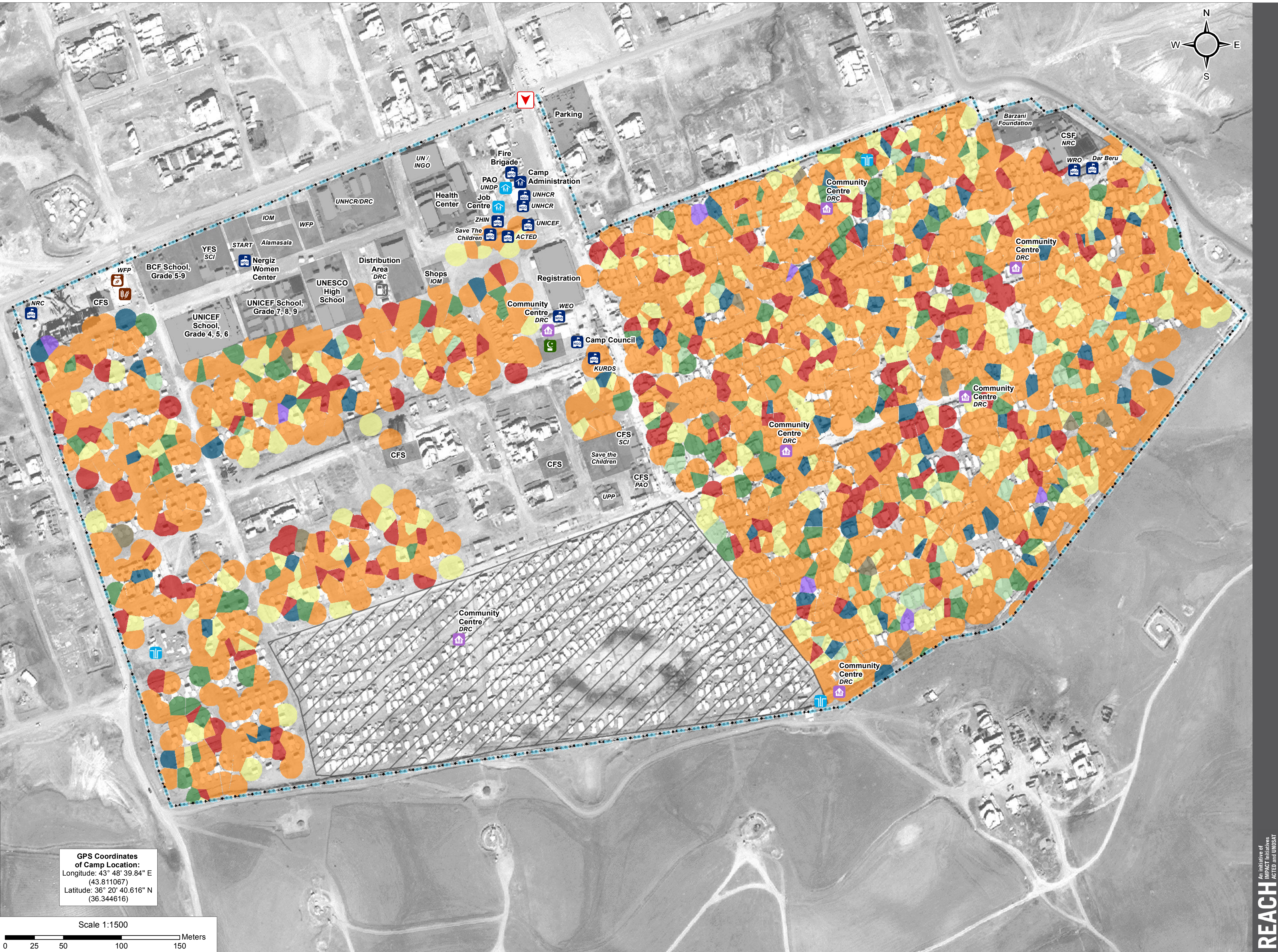
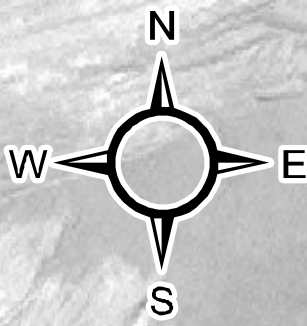
**Note:** Data, designations and boundaries contained on this map are not warranted to be error-free and do not imply acceptance by the REACH partners, associates or donors mentioned on this map.



**GPS Coordinates of Camp Location:**  
Longitude: 43° 48' 39.84" E  
(43.811067)  
Latitude: 36° 20' 40.616" N  
(36.344616)

Scale 1:1500

0 25 50 100 150 Meters







# IRAQ - Erbil Governorate - Kawergosk Camp

Food Security - June 2015

For Humanitarian Purposes Only  
Production date : 9 August 2015

## Food Security

- Food Secure
- Marginally Food Secure
- Moderately Food Insecure
- Severely Food Insecure

## Camp Infrastructure

- Camp Delineation
- Fence
- Unoccupied Area
- Office / Facility
- Entrance
- Camp Management
- NGO Office
- Mosque
- Community Service
- Community Area
- Shop
- Bakery
- Fuel Depot
- Borehole

GPS Coordinates  
of Camp Location:  
Longitude: 43° 48' 39.84" E  
(43.811067)  
Latitude: 36° 20' 40.616" N  
(36.344616)

**Note:**  
Polygons representing households are generated by the ArcToolbox tool 'Create Thiessen Polygons' using the location recorded at each assessment.  
The polygons created are a spatial representation of the household area not a defined boundary of a household.

**Data Sources:**  
Thematic Data: 17 June 2015 - REACH  
Administrative boundaries: GADM  
Background imagery: 02/05/2014 DigitalGlobe  
Projection: WGS 1984 UTM Zone 38N

Contact : [iraq@reach-initiative.org](mailto:iraq@reach-initiative.org)  
File: IRQ\_Map\_Kawergosk\_CampSweepIndicators\_17Jun2015

**Note:** Data, designations and boundaries contained on this map are not warranted to be error-free and do not imply acceptance by the REACH partners, associates or donors mentioned on this map.

