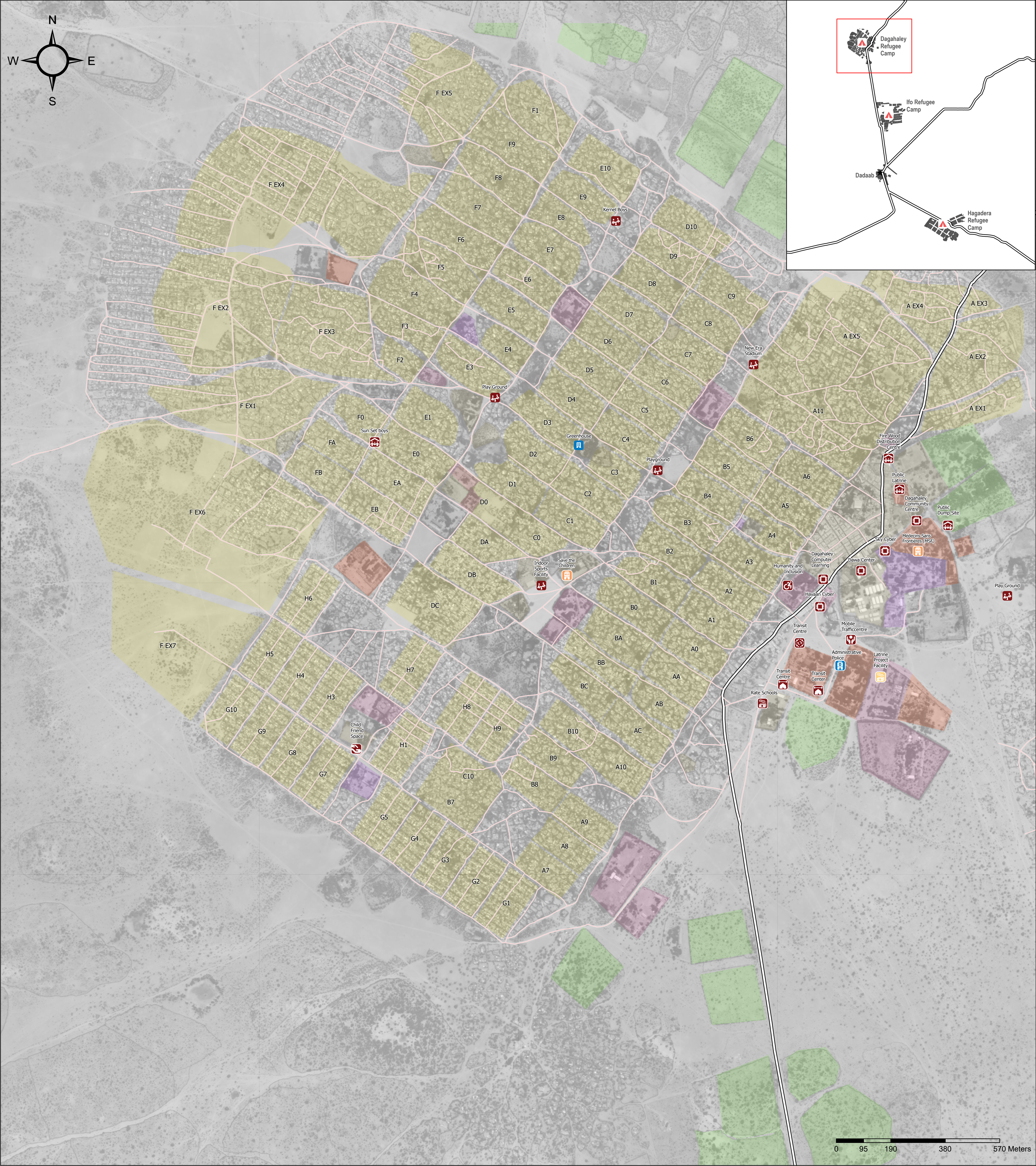


KENYA - Garissa County - Dadaab

Dagahaley Refugee Camp - Administration Offices and Community Facilities

Infrastructure - As of MAY 2022



Data sources:
Infrastructure: REACH (2022);
Camp Land Use: UNHCR (2013);
Roads: OpenStreetMap Contributors (July 2022);
Hydrology: Digital Chart of the World, ©OpenStreetMap Contributors (July 2022);
Coordinate System: GCS WGS 1984

Note: Data, designations and boundaries contained on this map are not warranted to be error-free and do not imply acceptance by REACH partners, associates or donors mentioned on this map.

File:
REACH_KEN_Map_Dadaab_Refugee_Camp_Infrastructure_and_service_mapping_May2022_a1_potrait

Contact: reach.mapping@impact-initiatives.org

Camp Infrastructure

Community facilities

- Child friendly space (2)
- Counselling centre (1)
- Facility offering CCCM (Camp coordination and camp management) services (4)
- Facility offering Livelihoods/jobs (1)
- Facility offering assistive devices for persons with disabilities (1)

Information and Communication Technology center (5)

Playing ground (for games) (9)

Social hall/building (1)

Transit centre (2)

Facility offering Livelihoods/jobs not operational (1)

Administration office

- Police post (1)
- Youth office (1)
- International NGO (2)

Camp land use

- Administration
- Community facilities
- Education
- Green Belt
- Health
- Open spaces
- Uncategorised
- Residential blocks

Roads

- Primary road
- Other road

Funded by European Union
Civil Protection and Humanitarian Aid