



BANGLADESH - Kutupalong Refugee Camps 8W, 8E, 9

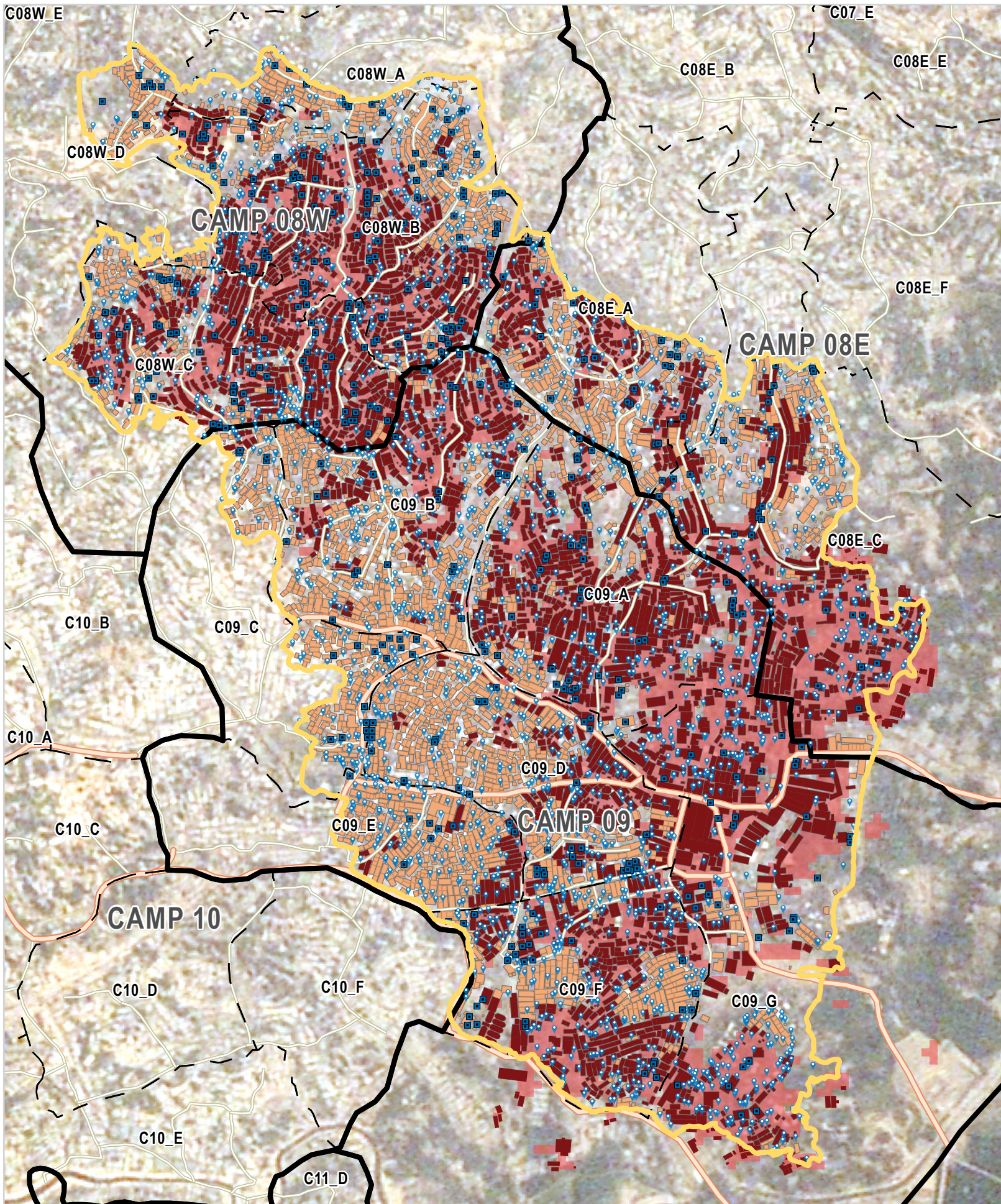
Rapid Infrastructure Damage Overview from Fires, as of March 24

For Humanitarian Purpose Only
Production Date: 24 March 2021

7,750 Shelters within fire affected zone, of which 4,146 within burned area*

97 Education Facilities within fire affected area

5 Health Facilities within fire affected area



About this Factsheet

A large scale fire swept through three camp sites in Kutupalong on 22 March 2021 displacing Rohingya refugees and causing large-scale damage in the world's largest refugee camp outside of Cox's Bazar, Bangladesh.

*A Burned Area Index (BAI) analysis was conducted using Sentinel-2 satellite imagery to define the most severely impacted area within the fire zone.

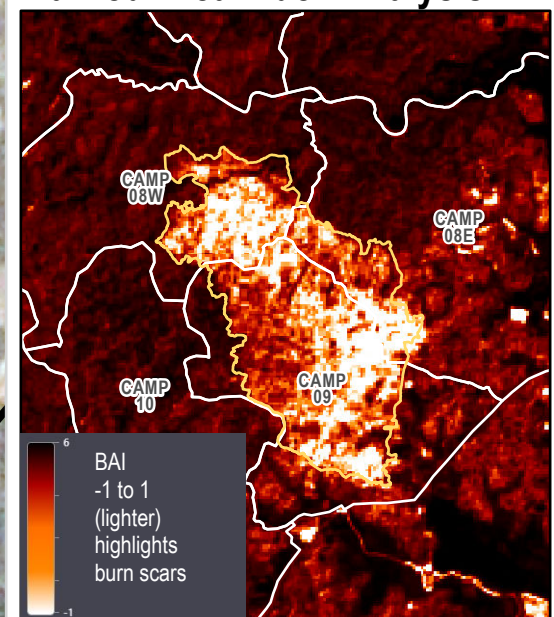
In addition, a rapid infrastructure damage overview was conducted to provide a situational overview on the potential impact to the number of shelters, camp facilities, and WASH infrastructure.

Data Sources:

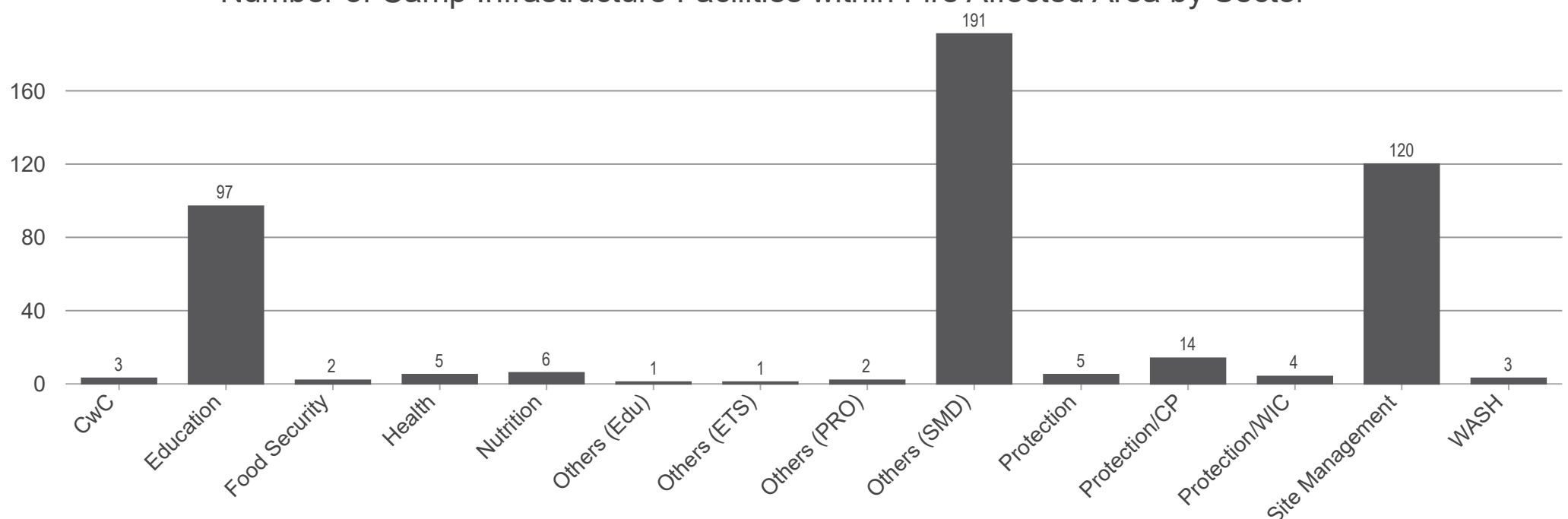
Shelter Footprints: REACH Initiative, 2021
Cox's Bazar - Common facility mapping dataset, ISCG HDX 31 August 2020
WASH Infrastructure, REACH, UNICEF
Fire Affected Area: IOM, 22 March 2021
Burned Area Index: REACH Initiative, 24 March 2021
Sentinel-2 Imagery: Sentinel-hub, 24 March 2021
Satellite data: BlackSky
Date: 24 March 2021
Copyright: © BlackSky 2021
Source: BlackSky

- Fire Affected Area
- Burned Area (Extracted from BAI)
- Camp Facilities within Fire Affected Area
- WASH Infrastructure within Fire Affected Area
- Shelters within Fire Affected Area
- *Shelters within Burned Area Analysis
- Camp Admin
- Camp Block
- Main Path
- Footpath

Burned Area Index Analysis



Number of Camp Infrastructure Facilities within Fire Affected Area by Sector





2,396*
WASH Infrastructure points
within fire affected area



1,118
Tubewell-Handpumps
within fire affected area



1,424
Latrine cubicles within
fire affected area



611
Bathing cubicles
within fire affected area

