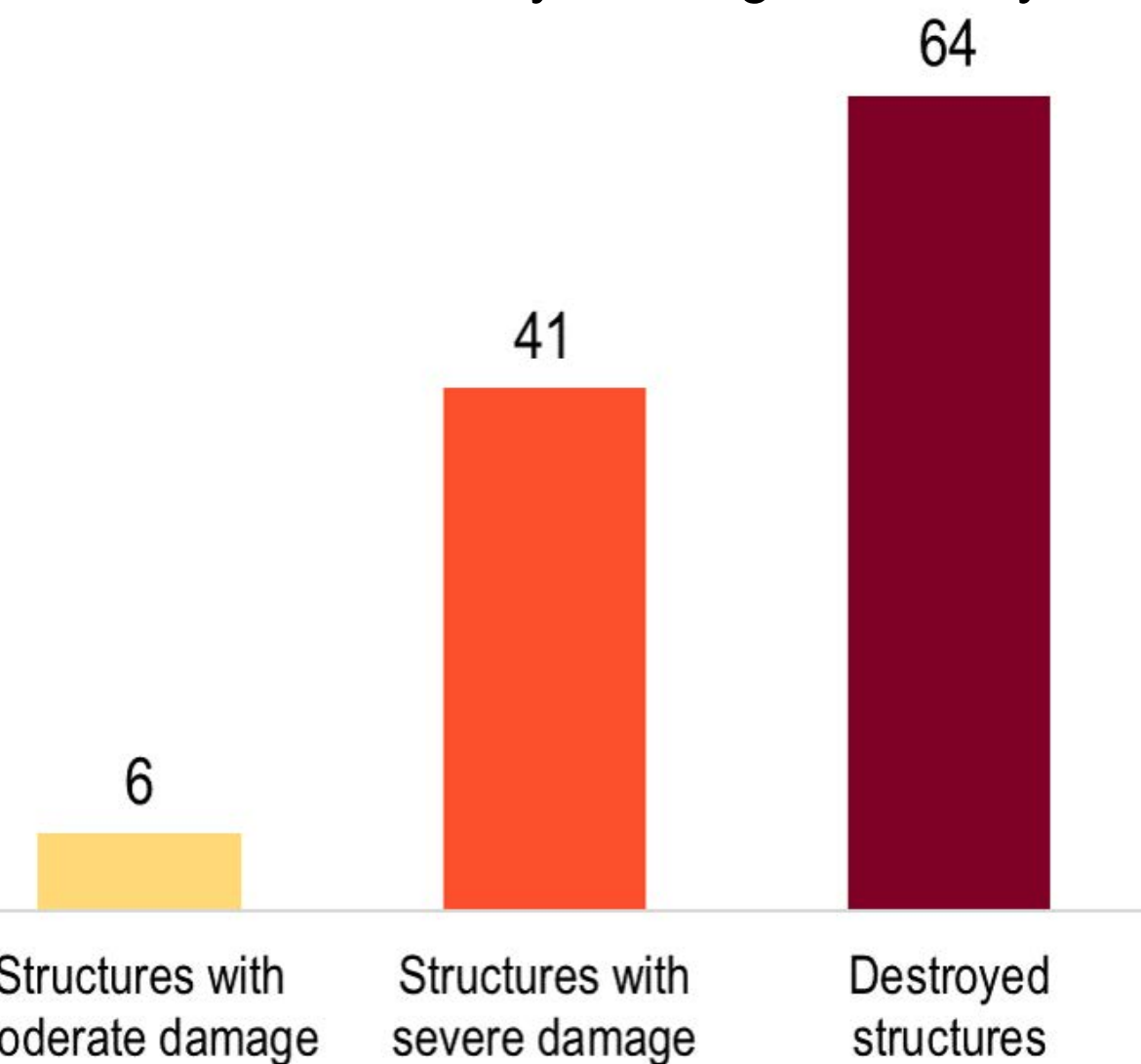


Hammura Summary

11% of Structures Damaged or Destroyed

Structure count by damage severity



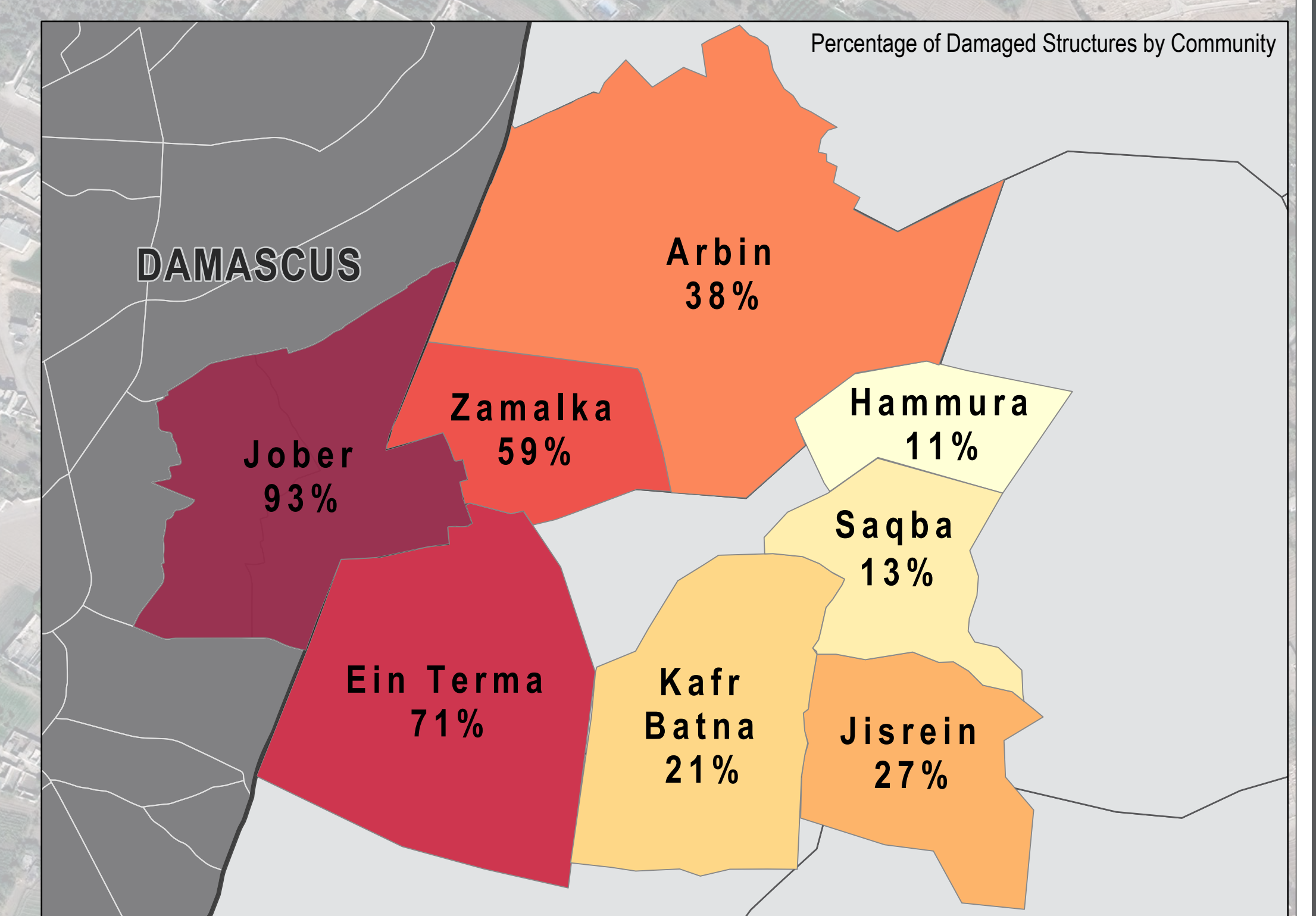
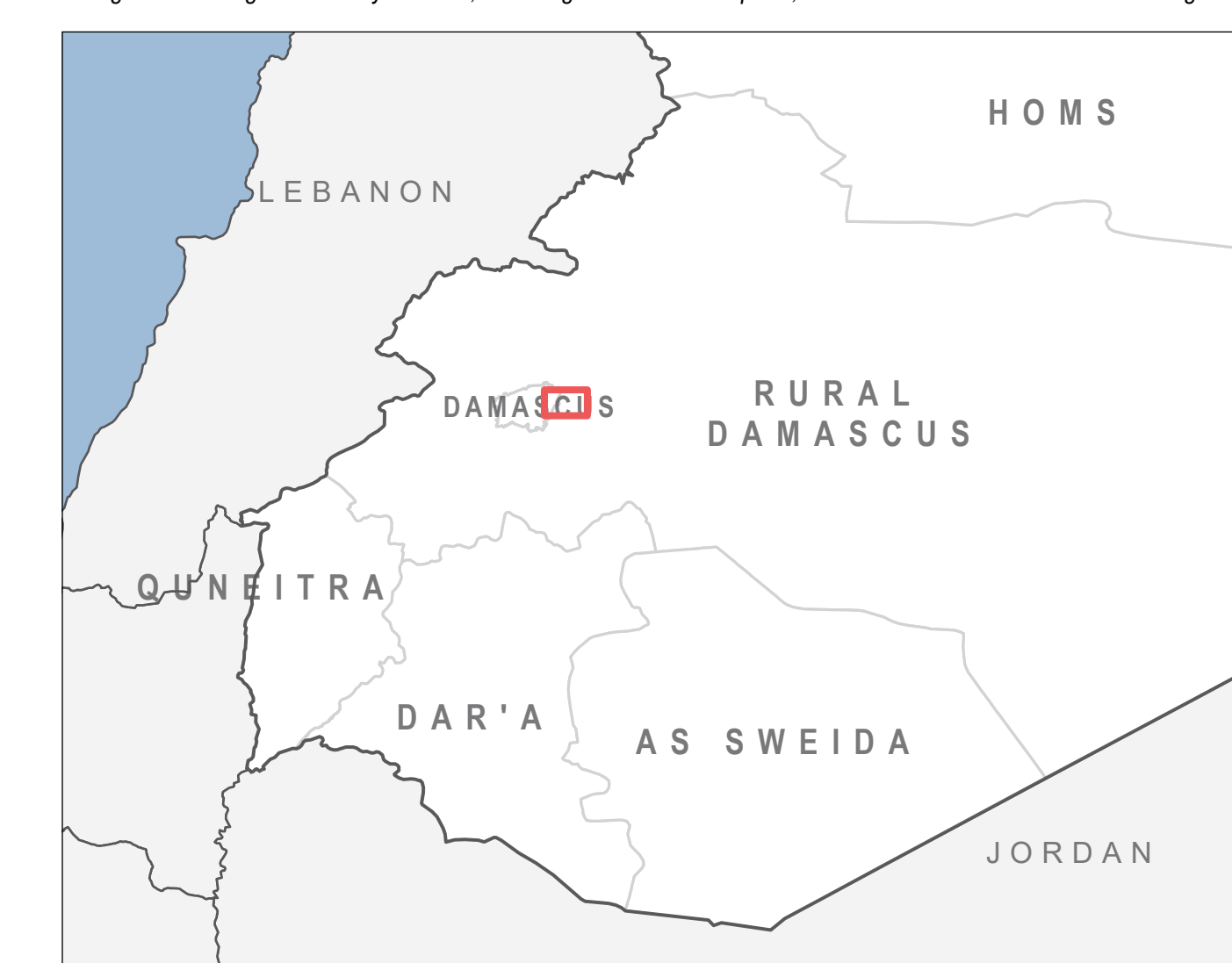
32,500 total population
of which 14,250 are IDPs

50-74% of preconflict population displaced
from community

26-50% of remaining population are female

Hammura is a community located in central Eastern Ghouta, an agricultural region east of Damascus that has been classified by the United Nations as besieged since 2013. Due to the community's more central location within Eastern Ghouta, the number of structures damaged is lower than in assessed communities neighbouring Damascus. Despite the lower extent of damage, Hammura has still witnessed major displacement of its pre-conflict population and nearly half of the community's current population are reported to be IDPs from neighbouring communities. The risk of shelling has been reported in the community, and in November 2017, schools in Hammura and across Eastern Ghouta reportedly closed due to the risk of shelling. Hammura reportedly has mobile clinics/field hospitals, informal emergency care points, and primary healthcare facilities. Additionally, there are pre-conflict primary, secondary, and high schools in the community, as well as informal schools since the conflict began, which are underground facilities reportedly set up to protect children and teaching staff from shelling. Community Representatives reported that an educational facility was struck and rendered out of service in November 2017. The water and electricity networks have been reported as unavailable in the community since Eastern Ghouta was first assessed in June 2016.

Data source:
The above data was collected by REACH initiative in late December 2017 (or in previous assessed months when specified) using the Community Profiles methodology, in which information is gathered from Community Representatives (CRs) residing within assessed communities who have sector-specific knowledge. Findings were triangulated through secondary sources, including humanitarian reports, and news and social media monitoring.



Damage Severity Density

High



* Severity calculated based on density of damaged infrastructure and weighted by scale of damaged based on; destroyed, severely damaged, or moderate damage.

Low

Structure Damage Class

- Destroyed
- Severe Damage
- Moderate Damage

Satellite Data (1): WorldView-3 from 03 December 2017
Copyright: DigitalGlobe, Inc
Source: US Department of State, Humanitarian Information Unit, NextView License
Road Data: OpenStreetMap
Admin Data: UN OCHA
Analysis: UNITAR-UNOSAT
Production: REACH Initiatives

Satellite Data (1): WorldView-3 from 03 December 2017
Copyright: DigitalGlobe, Inc
Source: US Department of State, Humanitarian Information Unit, NextView License

Satellite Data (2): WorldView-2 from 20 November 2017
Copyright: DigitalGlobe, Inc
Source: US Department of State, Humanitarian Information Unit, NextView License

Note: Data, designations and boundaries contained on this map are not warranted to be error-free and do not imply acceptance by the REACH partners, associates or donors mentioned on this map.