

MULTI-SECTOR NEEDS ASSESSMENT (MSNA) AFGHANISTAN

BRIEF 2018

CONTEXT

After 17 years of protracted crisis, Afghanistan remains one of the world's most complex humanitarian emergencies. To inform humanitarian planning processes for 2019, the Multi-Sector Needs Assessment (referred to as the Whole of Afghanistan Assessment- or WoAA in country) was conducted in the framework of the OCHA-chaired Humanitarian Coordinated Assessment Working Group (HCAWG) and the Inter-Cluster Coordination Team (ICCT), supported by REACH, ACAPS and MapAction.

The WoAA covered information needs relevant to all national clusters, in all 34 provinces and across 70 of the country's hard-to-reach districts.

WHAT IS A MSNA?

Multi-Sector Needs Assessments aim to fill information gaps in order to inform crisis-wide humanitarian planning. MSNAs provide comparable data across all relevant sectors, crisis-affected areas and population groups. Where possible and relevant, the MSNA coverage includes both accessible and hard-to-reach areas, displaced and non-displaced population groups, and any other relevant stratification. MSNAs are implemented in a participative and inclusive manner; they are time-sensitive with data and findings released prior to HNO and HRP discussions to generate impact. In 2018, eight MSNAs were supported by REACH and carried out thanks notably to the funding support from the global ECHO Enhanced Response Capacity funding mechanism.

KEY MSNA FINDINGS

60% Total of crisis-affected households (HHs) with three or more unmet sectoral needs

62% Conflict-affected non-displaced HHs

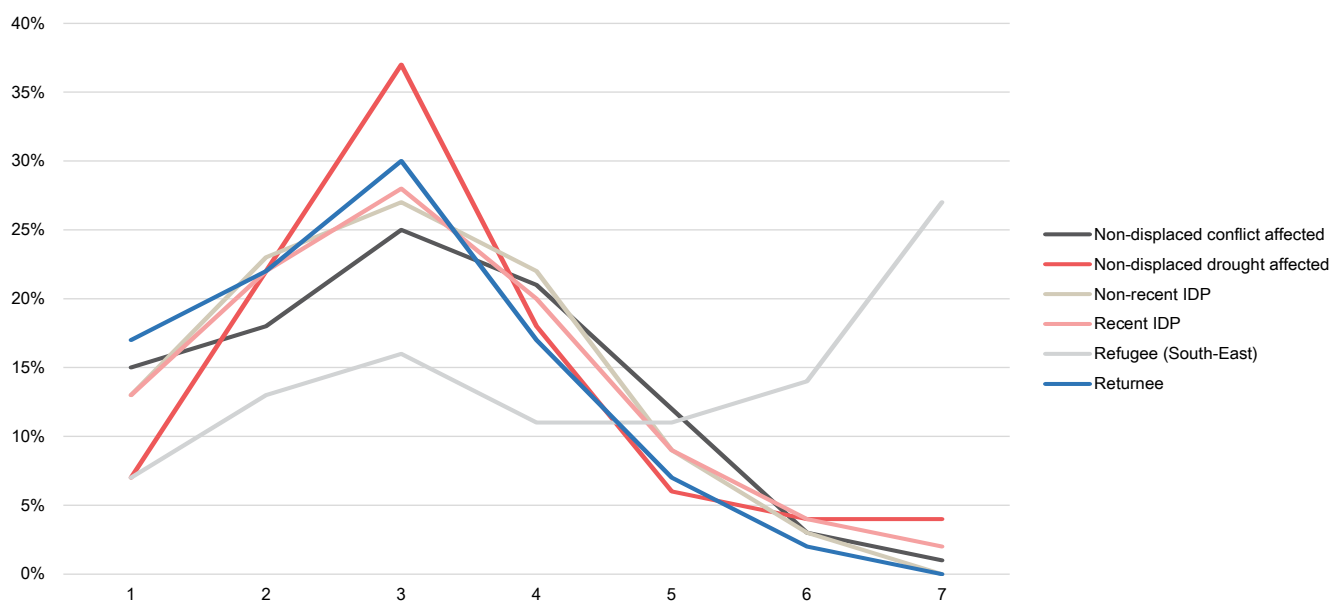
62% Recent IDP HHs

70% Drought-affected non-displaced HHs

79% Refugee HHs

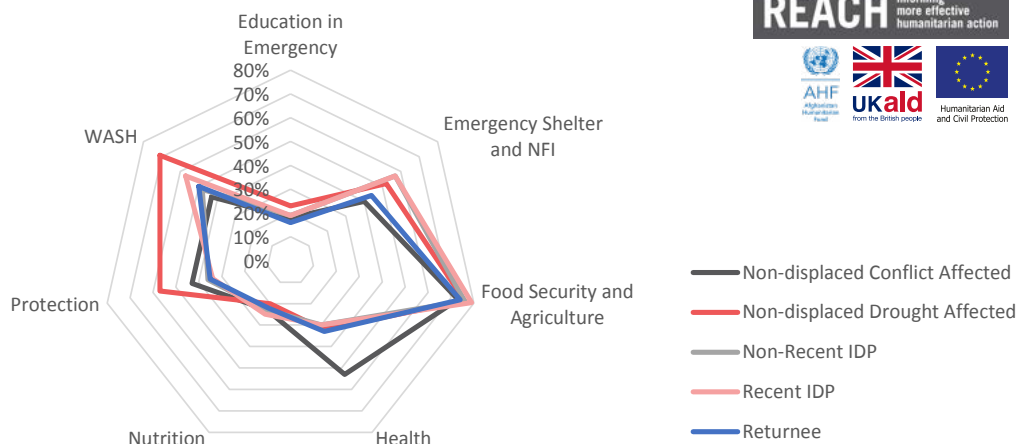
61% Non-recent IDP (> 6 mo) HHs

57% Returnee HHs



Percentage of households with unmet needs in one or more sectors simultaneously, by population group.

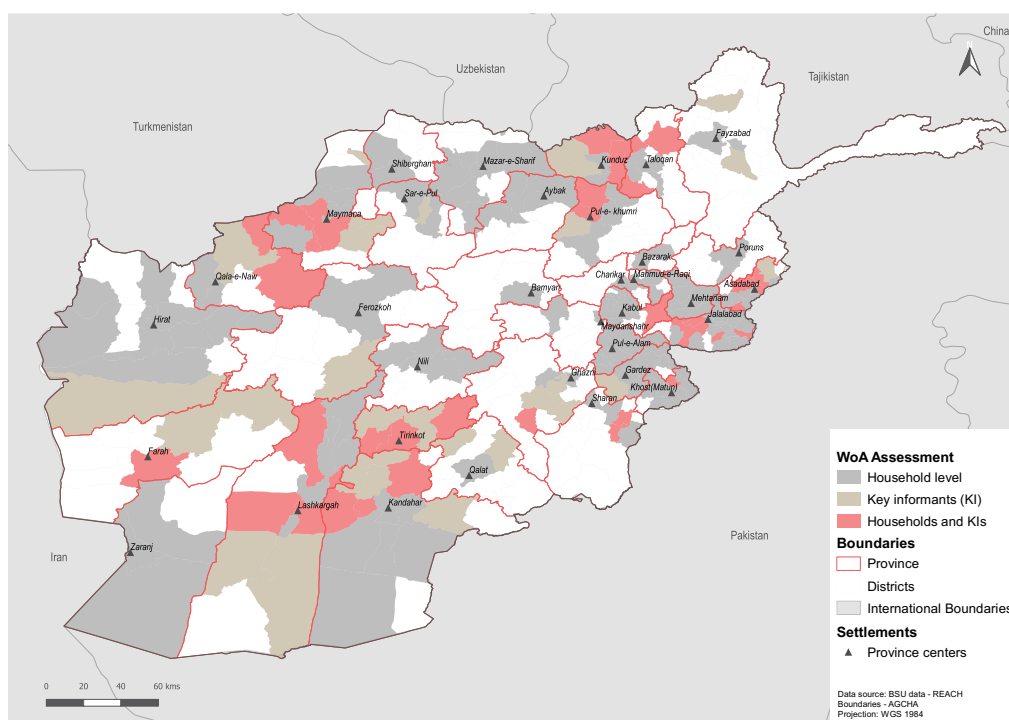
Percentage of households with unmet sector needs*, by population group



MSNA TIMELINE AND WORKFLOW



MSNA COVERAGE BY ASSESSMENT COMPONENT



IMPACT OF MSNA FINDINGS

70 References in the 2019 Humanitarian Needs Overview

MSNA data was used to inform analysis and sectoral PiN calculations for **6/7** Clusters in the Humanitarian Needs Overview 2019

REACH facilitates the development of information tools and products that enhance the capacity of aid actors to make evidence-based decisions in emergency, recovery and development contexts. All REACH activities are conducted through inter-agency aid coordination mechanisms. REACH is a joint initiative of IMPACT, its sister-organisation ACTED and the United Nations Operational Satellite Applications Programme UNOSAT.

This document covers humanitarian aid activities implemented with the financial assistance of the European Union. The views expressed herein should not be taken, in any way, to reflect the official opinion of the European Union, and the European Commission is not responsible for any use that may be made of the information it contains.



IMPACT.init



reach-initiative.org



REACH_info

* In the case of nutrition, % of households with unmet needs only includes households with children under 24 months old