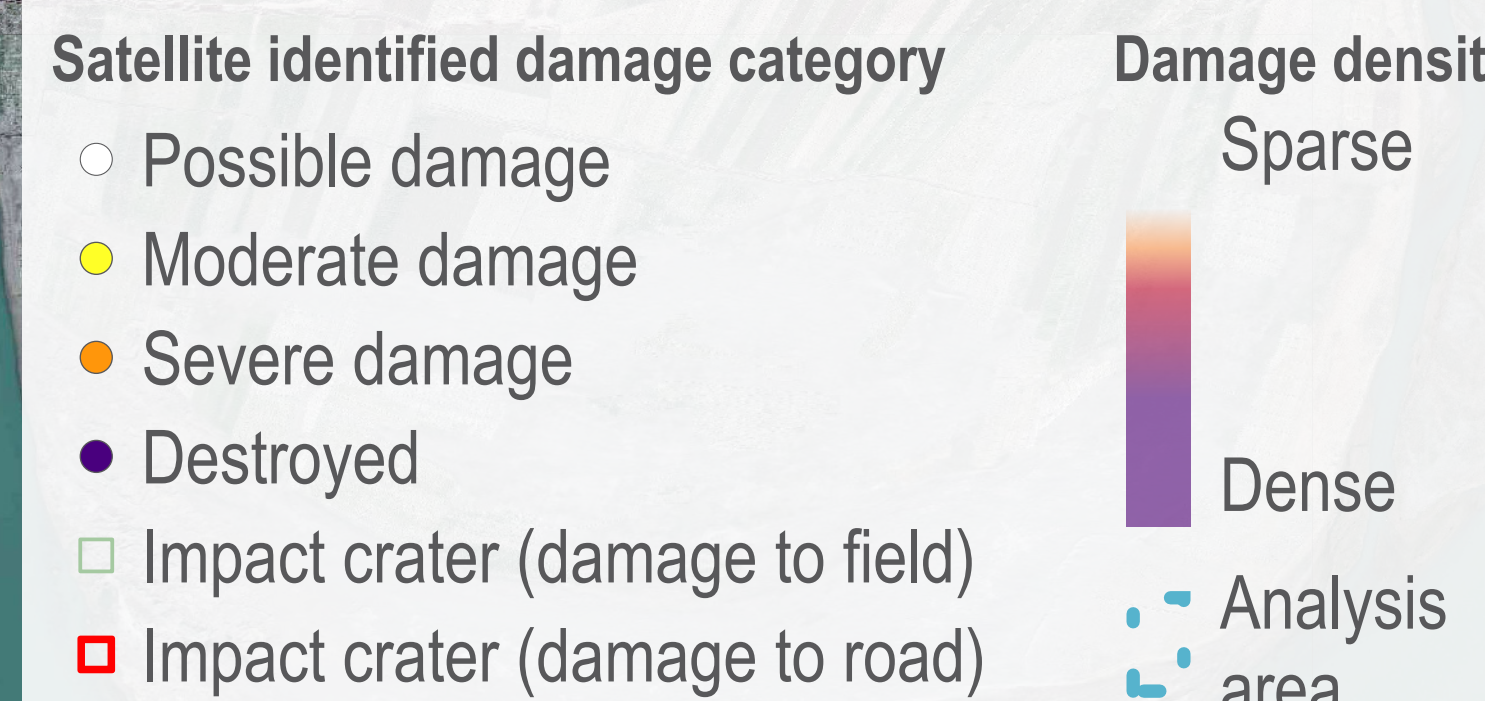
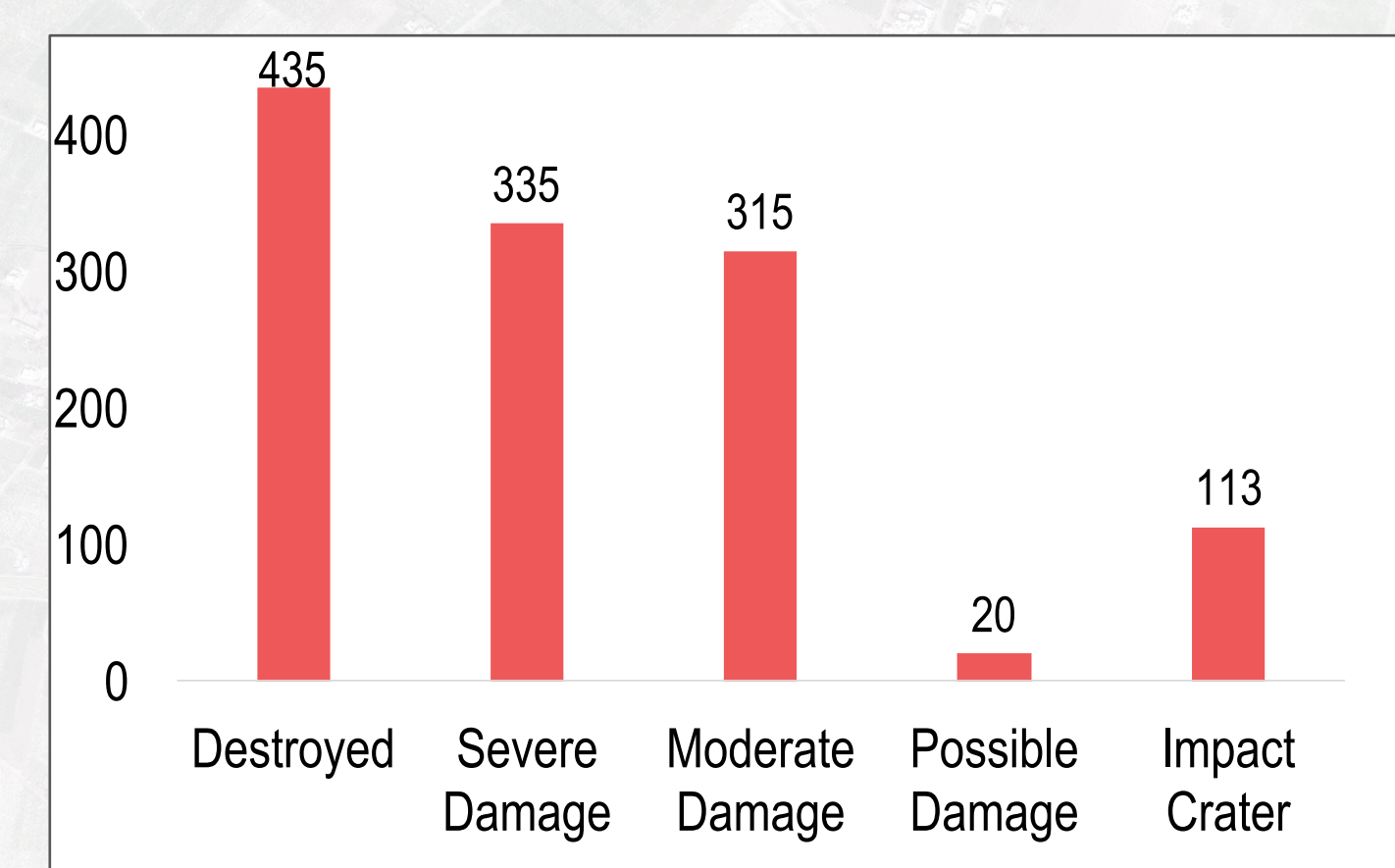


Damage category prevalence in area of Hajin city



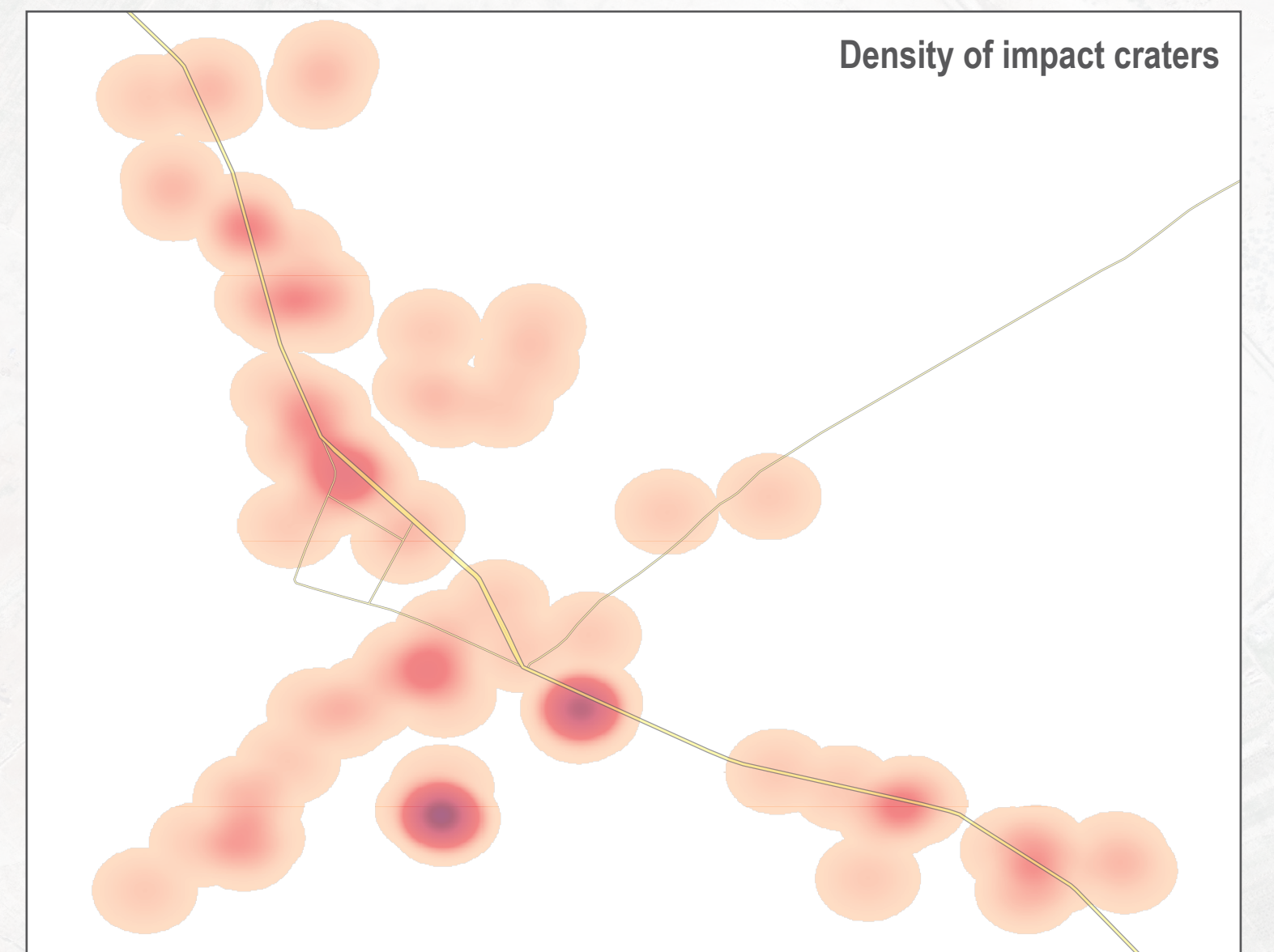
Example of impact crater to road



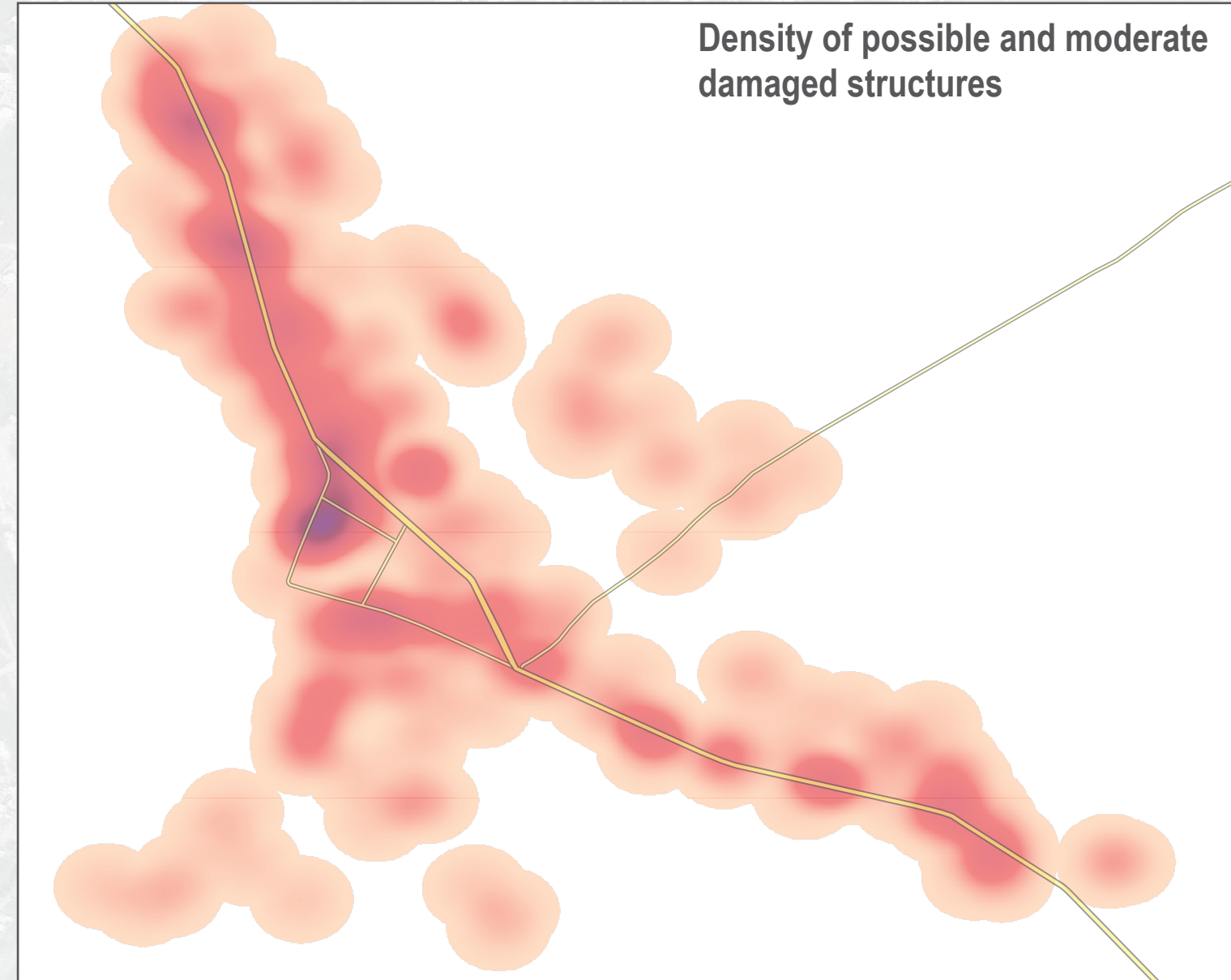
Example of impact crater to field



**113 impact craters**



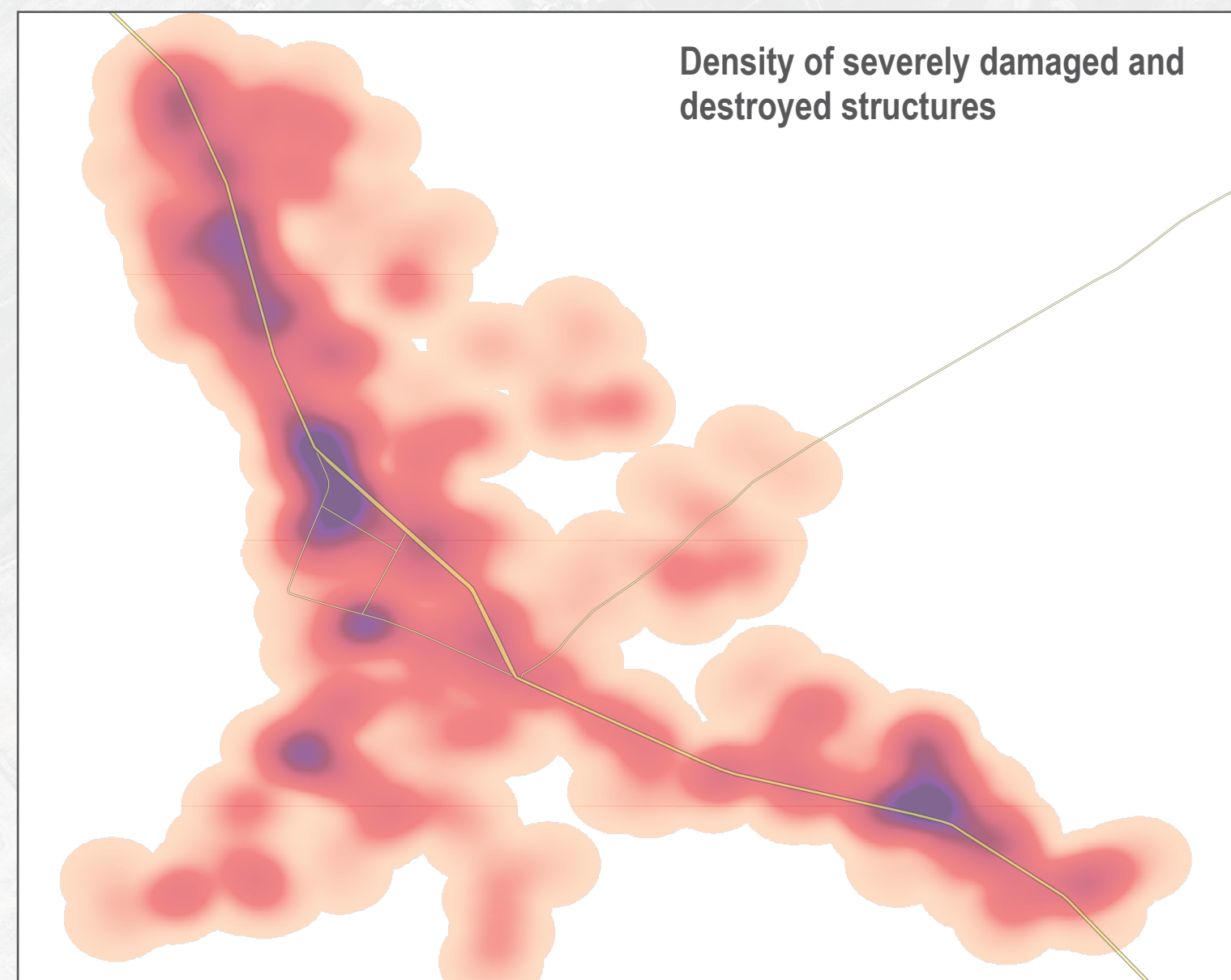
**335 structures are moderately or possibly damaged**



Example of moderate damage



**770 structures are severely damaged or destroyed**



Example of severely damaged & destroyed structures



Damage Analysis by UNITAR-UNOSAT using:  
Satellite Imagery: WorldView 2 from 26 Jan 2019  
Copyright: (c) 2019 DigitalGlobe

Note: Data, designations and boundaries contained on this map are not warranted to be error-free and do not imply acceptance by the REACH partners, associates or donors mentioned on this map.

