

REACH Armenia: Multi-Sectoral Needs Assessment (MSNA) Round 2

Key findings

27 May 2021



Photo credit: REACH National Assessment Officer



Funded by
European Union
Humanitarian Aid

REACH Informing
more effective
humanitarian action

Contents

Key findings;
Methodology;
Displacement timeline;
Distribution of HHs in a refugee-like situation;
Land-use map;
Demographics;
Displacement dynamics;
Most commonly reported priority needs;
Movement intentions;
Sector zoom-ins:
Shelter/Non-food items;
Water, Sanitation, and Hygiene;
Protection;
Food security;
Livelihoods;
Education;
Health and COVID-19;
Accountability to affected populations;
Conclusions;
Information gaps & Next steps



Funded by
European Union
Humanitarian Aid

REACH Informing
more effective
humanitarian action



Objectives of the research

General objective:

To inform the UN Resident Coordinator office and Coordination Steering Group on priority humanitarian needs faced by people in a refugee-like situation from Nagorno Karabakh and their host communities in Armenia in its provinces in a COVID-19 context.

Coordination framework:

Coordination Steering Group & Information Management Working Group



Funded by
European Union
Humanitarian Aid

REACH Informing
more effective
humanitarian action



Objectives of the research

Specific objectives:

1. To understand the changed dynamics of population movement and demographic profile of households displaced as a result of a conflict over Nagorno-Karabakh compared to the first round of the MSNA, as well as to understand the movement intentions of people in a refugee-like situation in terms of durable solutions.
2. To evaluate how core humanitarian needs of HHs in a refugee-like situation and hosting HHs, specifically in terms of shelter, WASH, food security, health, education, protection and access to information, changed since December 2020.
3. Identify appropriate types of assistance to host communities (including municipal authorities and collective centers) to support them in meeting basic humanitarian needs of conflict affected populations.
4. To understand the extent to which displaced and host communities are being consulted, and the extent to which they are satisfied with humanitarian assistance that has been delivered or is planned for delivery, in response to the conflict.



Funded by
European Union
Humanitarian Aid

REACH Informing
more effective
humanitarian action

Key Findings (1/2)

- **94% of the households (HHs)** in a refugee-like situation reported that they **did not intend to move or were unable to communicate their intentions**. Those HHs that were planning to move most commonly reported intending to go back to large cities of Nagorno-Karabakh (NK) such as Sepanakert and Martiuni, or other cities in Armenia.
- Findings suggest that **shelter, cash, and food**, are the main priority needs among the HHs in a refugee-like situation (descending order). For host community, these needs are relatively similar: **cash and food**.
- The current displacement situation appears less dynamic than it did during the previous round, with findings suggesting that, for the majority of HHs, it is unlikely that they will return to their area of origin (AoO) in the near future.
- Only 17% of HHs in a refugee-like situation indicated that **shelter** in their area of origin **sustained no damage**.



Funded by
European Union
Humanitarian Aid

REACH Informing
more effective
humanitarian action

Key Findings (2/2)

- The **perception of safety** at the current place **seems to have worsened** for the population in a refugee-like situation, especially in such marzes as Syunik. 10% of the HHs in a refugee-like situation reported not feeling safe at all and 6% reported feeling rather unsafe.
- Findings suggest that the **employment status** among the population in a refugee-like situation changed considerably after the conflict, with the share of **unemployed** HHs seemingly having **tripled**, while the share of those who had held **permanent jobs has decreased** noticeably.



Funded by
European Union
Humanitarian Aid

REACH Informing
more effective
humanitarian action



Methodology

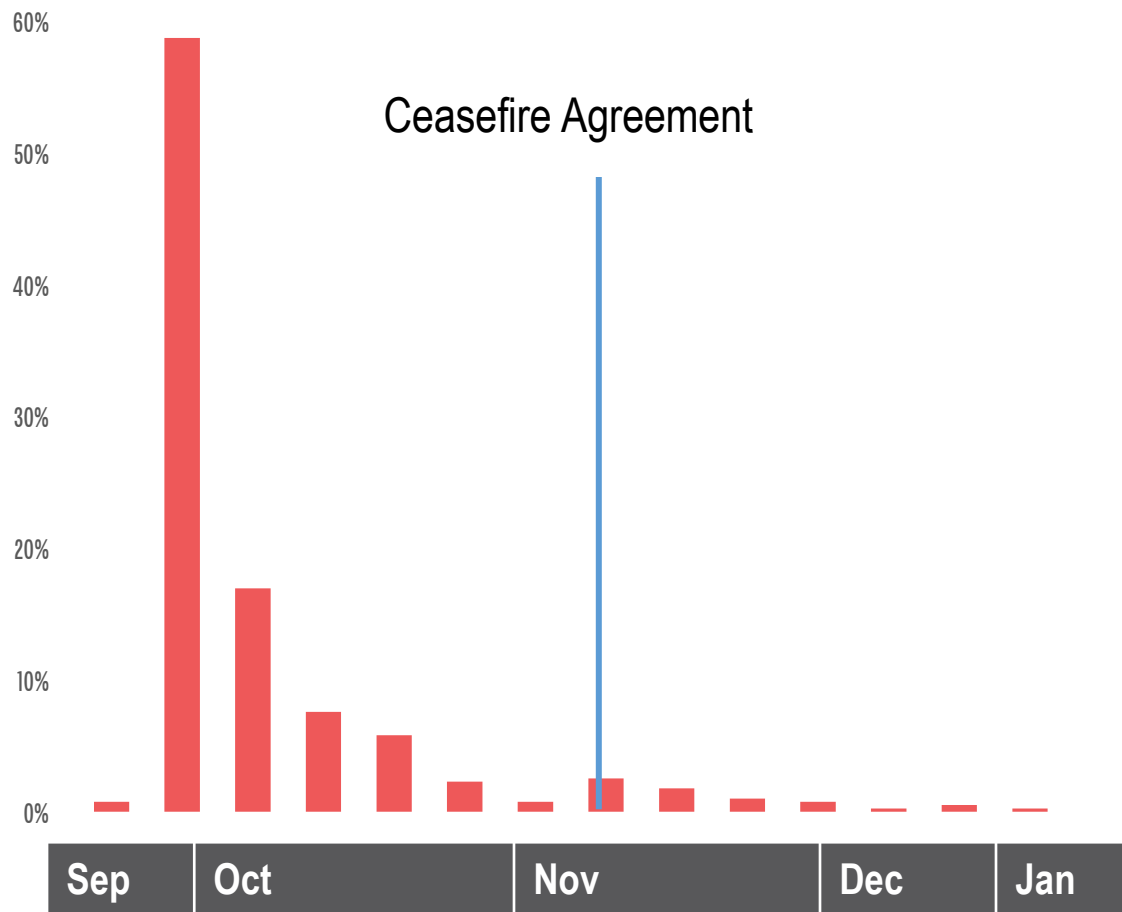
- **Household survey** covering 414 HHs in a refugee-like situation and 249 hosting HHs interviewed across all regions (marzes) of Armenia, sampled through a purposive snowball sampling approach. Data had been collected during the period 23 March to 29 April).
- Due to the purposive sampling, findings are not representative with a known level of precision and should be considered **indicative only**.
- To prevent over, or underrepresentation of HHs due to variances in population size per marz, quota sampling with proportionally distributed samples was used. For the hosting HHs, the quota is proportional with a coefficient of 0.6.
- **Limitations:** limited and varied availability of general populations figures from official sources did not allow random stratified sampling, preventing statistically representative findings. However, quota sampling allowed for somewhat generalizable findings for the two targeted groups, particularly in Yerevan, Ararat, Kotayk, and Syunik.



Funded by
European Union
Humanitarian Aid

REACH Informing
more effective
humanitarian action

Displacement Timeline



Most assessed HHs in a refugee-like situation moved in the **end of September**, 5% after the **ceasefire agreement**.



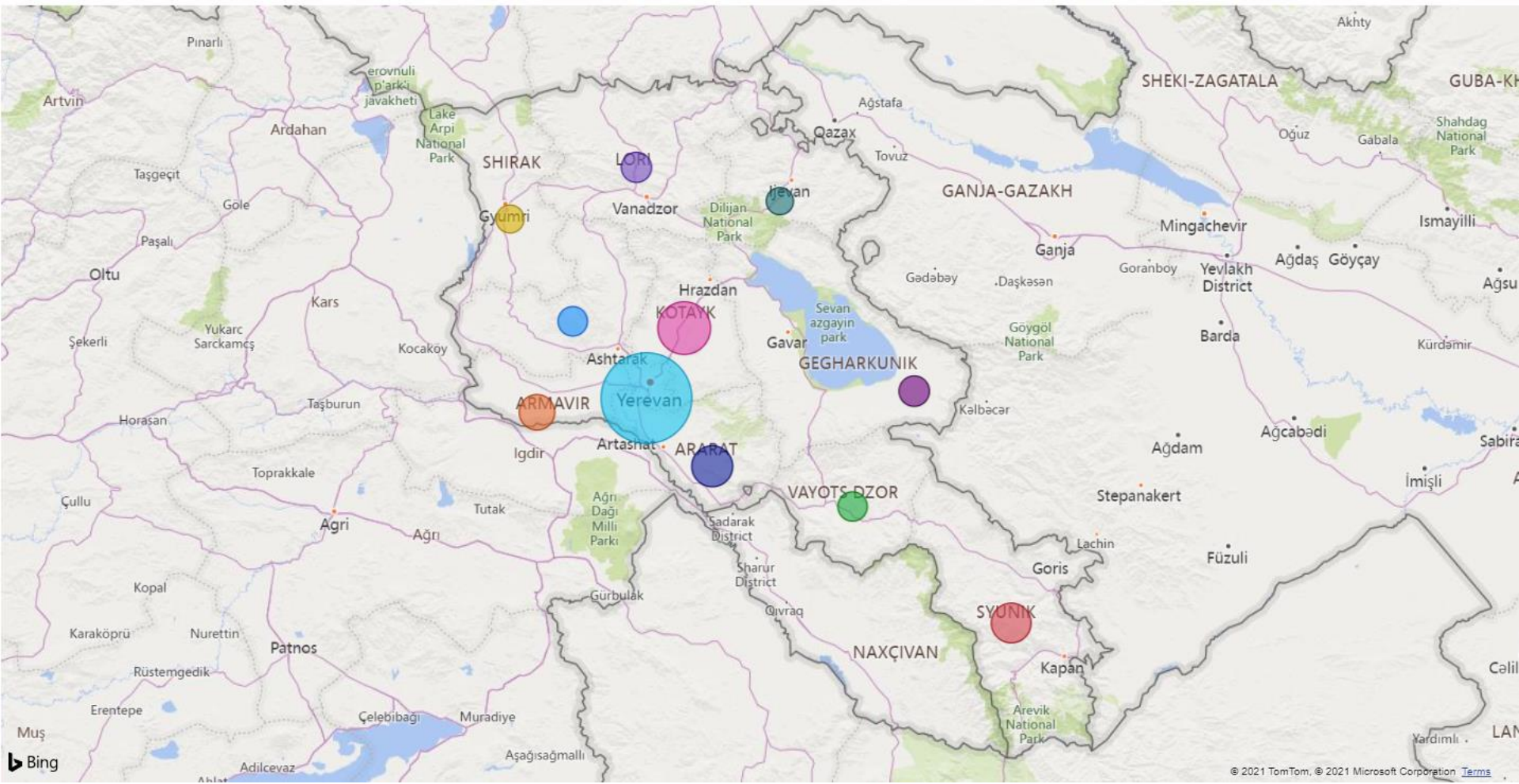
Funded by
European Union
Humanitarian Aid

REACH Informing
more effective
humanitarian action

Distribution of HHs in a refugee-like situation

Refugee-like Populations residing in Armenia

Marzes ● Aragatsotn ● Ararat ● Armavir ● Gegharkunik ● Kotayk ● Lori ● Shirak ● Syunik ● Tavush ● Vayots Dzor ● Yerevan



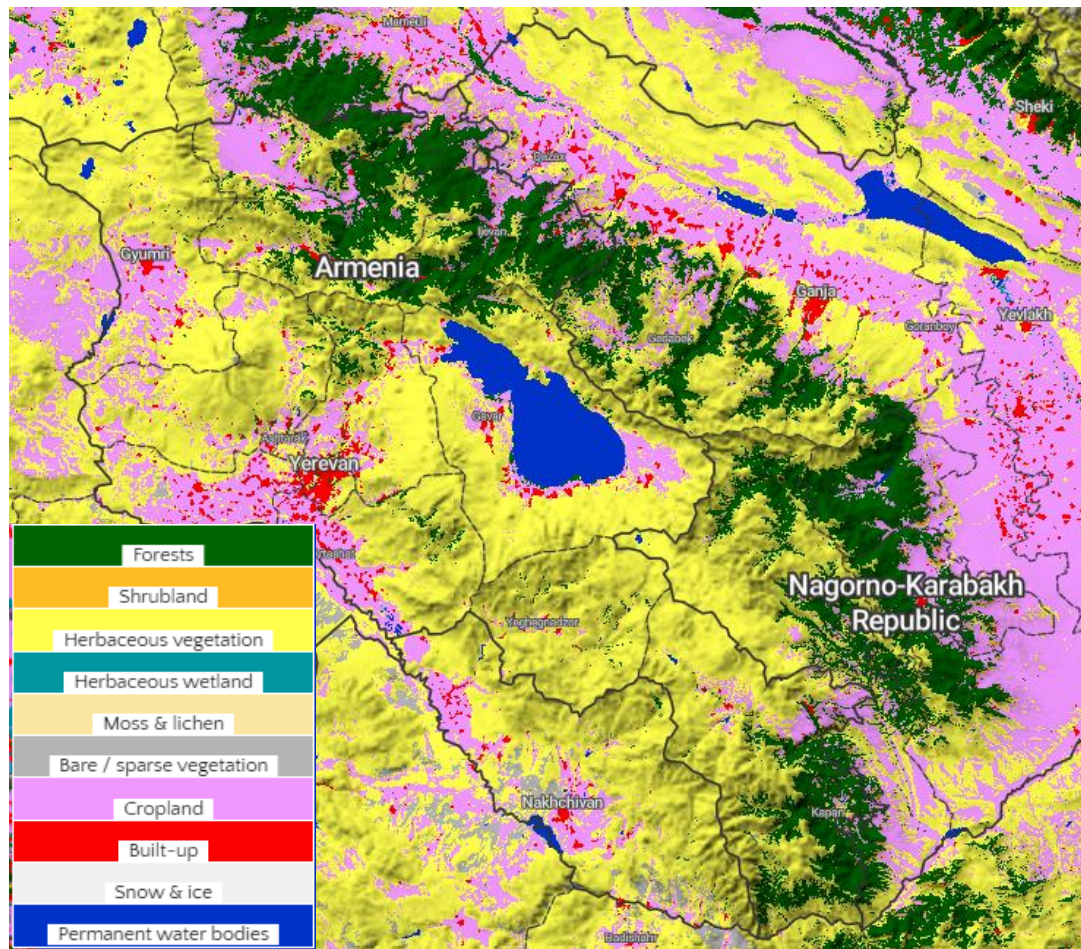
Source: UNHCR Data Portal



Funded by
European Union
Humanitarian Aid

REACH Informing
more effective
humanitarian action

Built-up areas and land use



- HHs in a refugee-like situation are unequally distributed throughout the regions, with **Yerevan, Ararat, Armavir, Kotayk, and Syunik** hosting a higher share of the displaced population than other regions.
- This might be partially due to the fact that **Yerevan, Ararat, Armavir, and Kotayk** are plain regions, hence potentially easier to settle. While in **Syunik**, more mountainous but closer to the border, HHs commonly have friends and relatives.

Source: <https://lcviewer.vito.be/2019>



Funded by
European Union
Humanitarian Aid

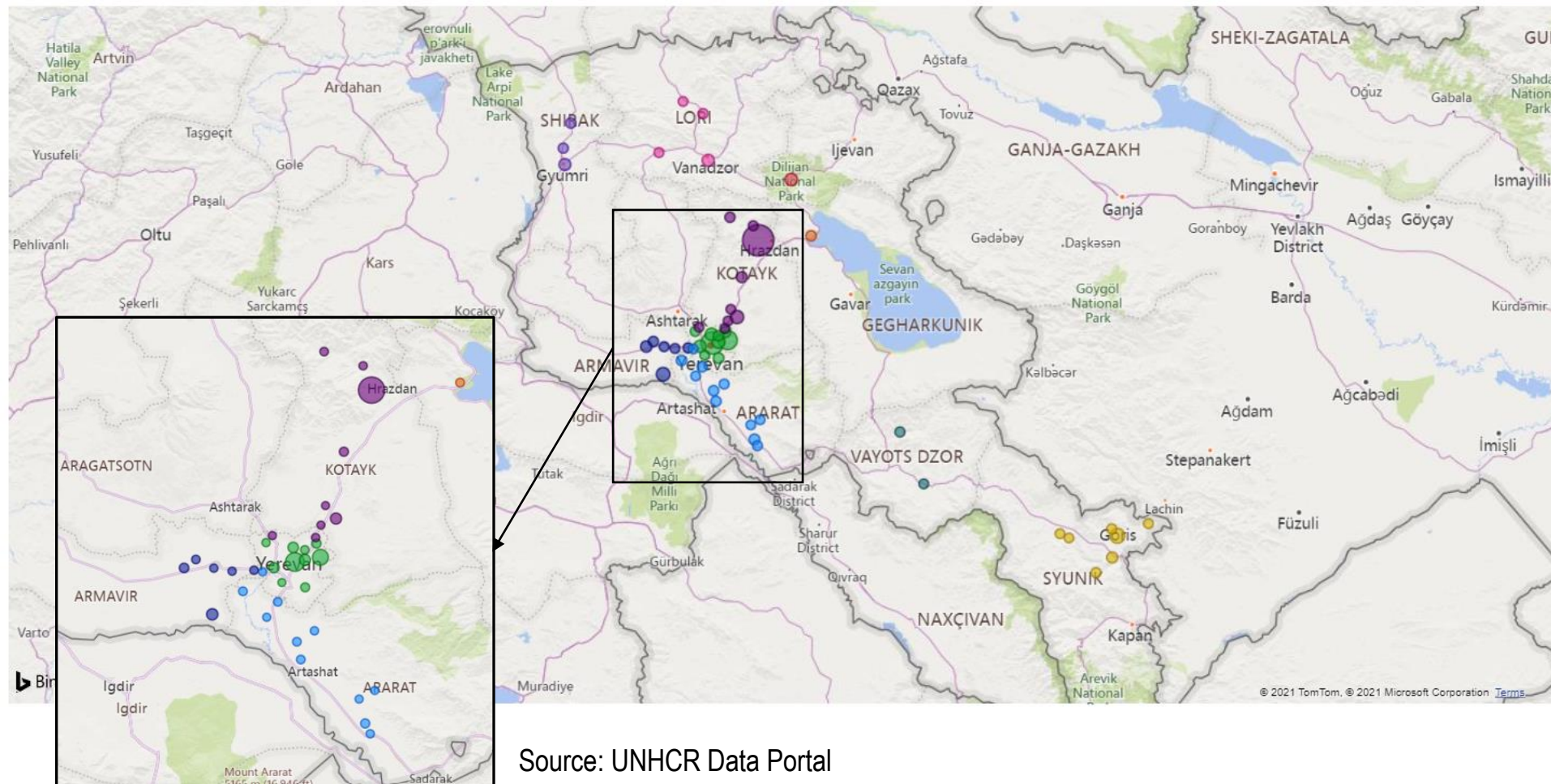
REACH Informing
more effective
humanitarian action

Distribution of HHs in a refugee-like situation

Site Master List (collective centres)



Marz ● Ararat ● Armavir ● Gegharkunik ● Kotayk ● Lori ● Shirak ● Syunik ● Tavush ● Vayots Dzor ● Yerevan



Source: UNHCR Data Portal



Funded by
European Union
Humanitarian Aid

REACH Informing
more effective
humanitarian action

Demographics

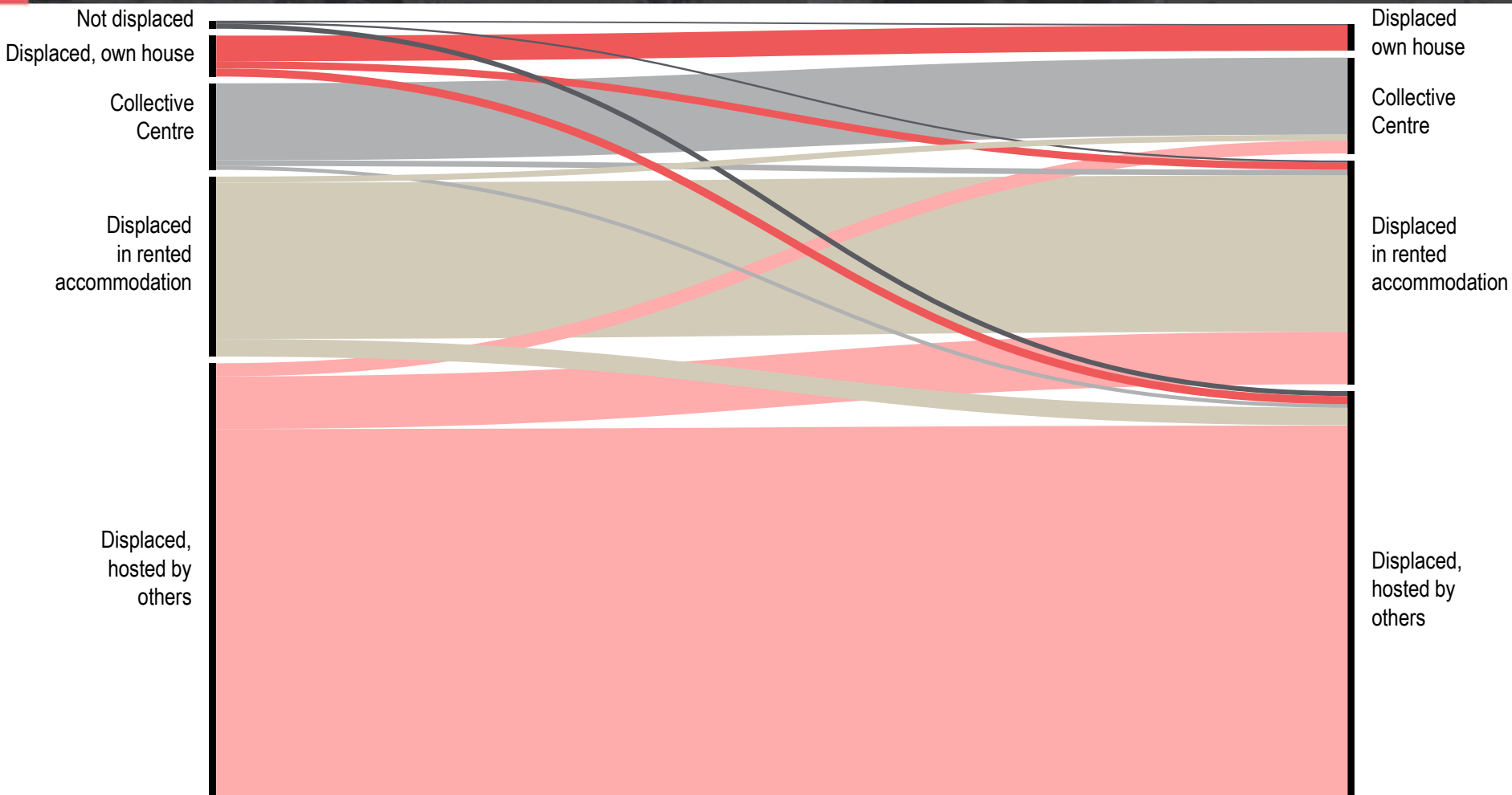
	Hosting HHs	Population in a refugee-like situation
Average HH size	3.97	4.06
% of female-headed HHs	51%	52%
Average age of the HH head	53	49
HH head has at least one vulnerability (e.g. chronic illness, disability, minority group)	55%	49%



Funded by
European Union
Humanitarian Aid

REACH Informing
more effective
humanitarian action

Displacement dynamics – 1/2



Displacement situation transition during the outbreak of the conflict and the time of the assessment

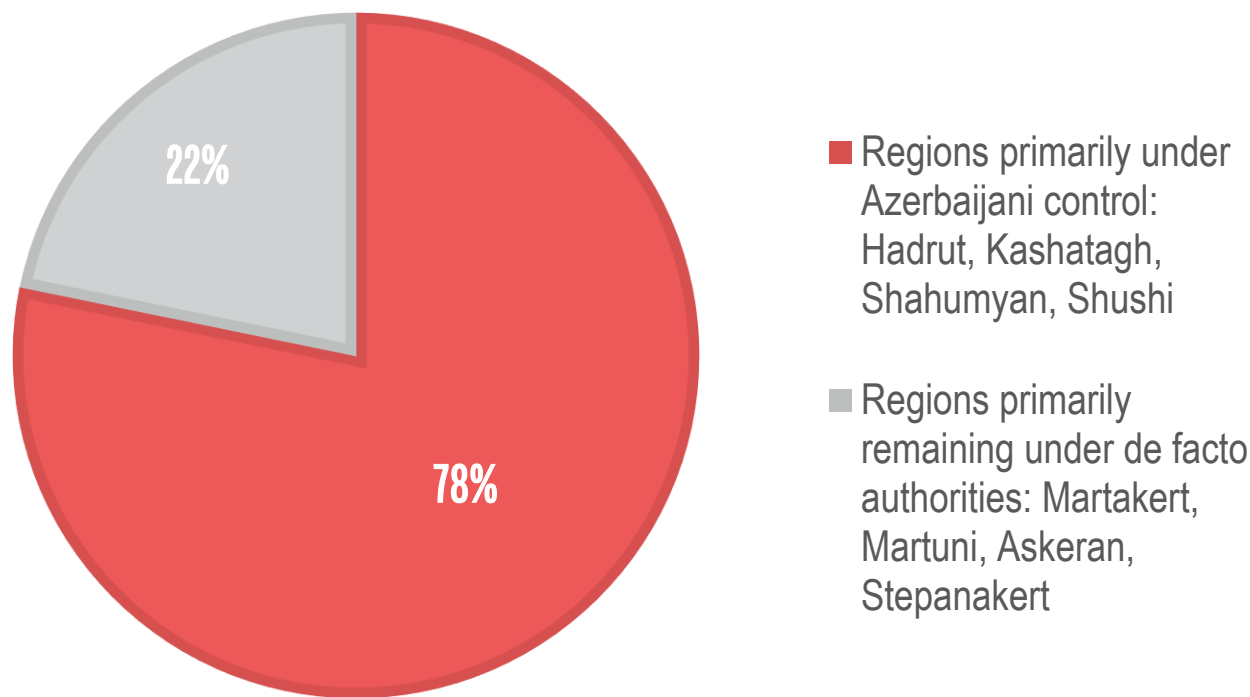


Funded by
European Union
Humanitarian Aid

REACH Informing
more effective
humanitarian action

Displacement dynamics – 2/2

% of assessed HHs in a refugee-like situation per control status of their region of origin



The data is aggregated on the level of province, while the settlement level data will provide a more accurate indication.



Funded by
European Union
Humanitarian Aid

REACH Informing
more effective
humanitarian action

Most commonly reported 1st, 2nd, and 3rd HH priority needs

Hosting HHs

	top 1	top 2	top 3
baby items	0%	1%	2%
cash	38%	23%	15%
clothes	2%	8%	9%
don't know/refuse to answer	2%	4%	6%
food	23%	26%	9%
medicines	5%	3%	6%
no needs	9%	18%	28%
sanitation and hygiene products	0%	2%	9%
shelter	15%	5%	2%
sleeping materials	1%	4%	4%
support with livelihoods	3%	2%	5%

HHs in a refugee-like situation

	top 1	top 2	top 3
baby items	1%	3%	4%
cash	26%	25%	22%
clothes	2%	8%	10%
cooking materials	1%	4%	6%
don't know/refuse to answer	0%	1%	2%
food	8%	25%	18%
medicines	4%	5%	3%
no needs	1%	5%	15%
sanitation and hygiene products	2%	3%	3%
shelter	48%	7%	5%
sleeping materials	3%	5%	6%
support with livelihoods	4%	7%	6%
support with childcare / education	0%	1%	1%



Funded by
European Union
Humanitarian Aid

REACH Informing
more effective
humanitarian action

Priority needs: comparison with previous round

Based on the findings of the previous round of MSNA, the top priority needs for hosting HHs were **cash**, **food**, and **clothes**. A considerable high share of HHs reported not having a third priority need.

HHs in a refugee-like situation most commonly reported **shelter**, **cash**, and **clothes**.

During this round, the top priority needs for hosting HHs were cash and food and for HHs in a refugee-like situation they were shelter, food, and cash.



Funded by
European Union
Humanitarian Aid

REACH Informing
more effective
humanitarian action

Most commonly reported priority needs, by % of hosting HHs per marz

Top 3 needs of the hosting HHs

	cash	food	cash	no needs
Aragatsotn	30%	30%	10%	10%
Ararat	29%	17%	14%	29%
Armavir	50%	8%	8%	67%
Gegharkunik	36%	45%	36%	27%
Kotayk	41%	29%	17%	10%
Lori	36%	18%	27%	18%
Shirak	17%	33%	0%	0%
Syunik	43%	38%	14%	24%
Tavush	17%	33%	0%	17%
Vayots Dzor	45%	18%	55%	9%
Yerevan	38%	25%	8%	40%

Top 3 needs of HHs in a refugee-like situation

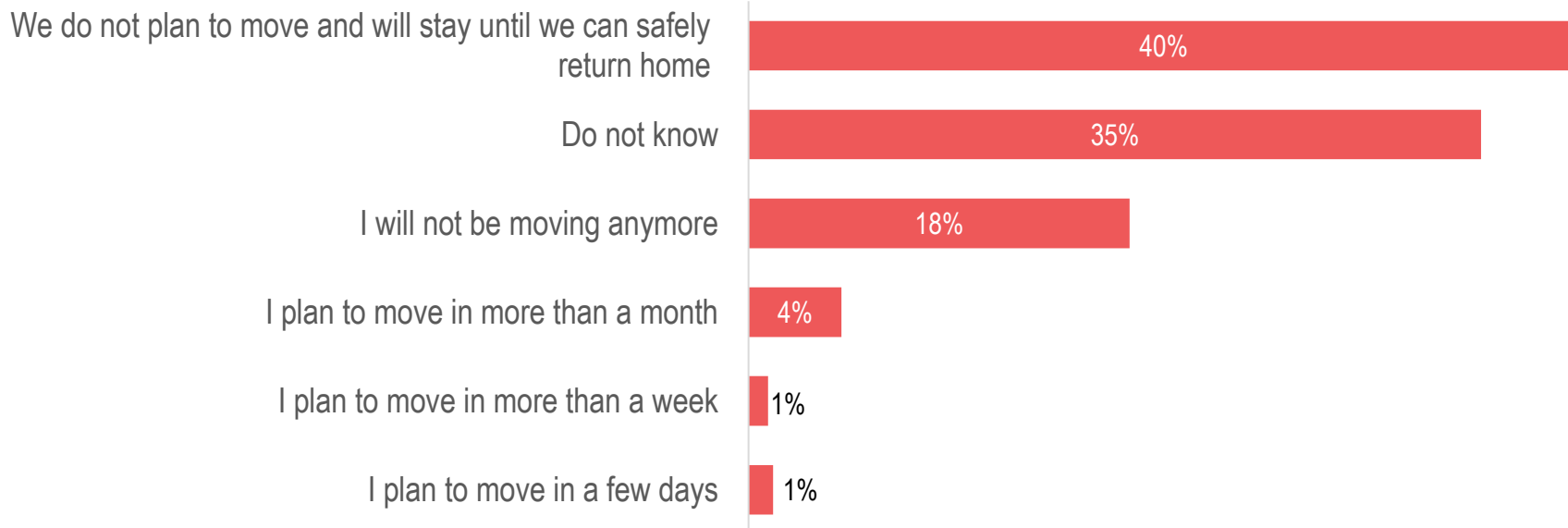
	shelter	food	cash	cash	no needs
Aragatsotn	47%	35%	12%	41%	6%
Ararat	49%	24%	27%	26%	16%
Armavir	34%	20%	27%	24%	20%
Gegharkunik	42%	5%	26%	16%	32%
Kotayk	48%	41%	22%	28%	6%
Lori	56%	22%	28%	17%	17%
Shirak	50%	40%	10%	70%	0%
Syunik	66%	23%	20%	15%	26%
Tavush	71%	0%	21%	21%	7%
Vayots Dzor	72%	0%	61%	17%	0%
Yerevan	31%	27%	23%	11%	13%



Funded by
European Union
Humanitarian Aid

REACH Informing
more effective
humanitarian action

Most commonly reported movement intentions, by % of HHs in a refugee-like situation



Findings suggest that most HHs in a refugee-like situation **did not intend to move** in the near future, or had difficulties expressing their intentions.



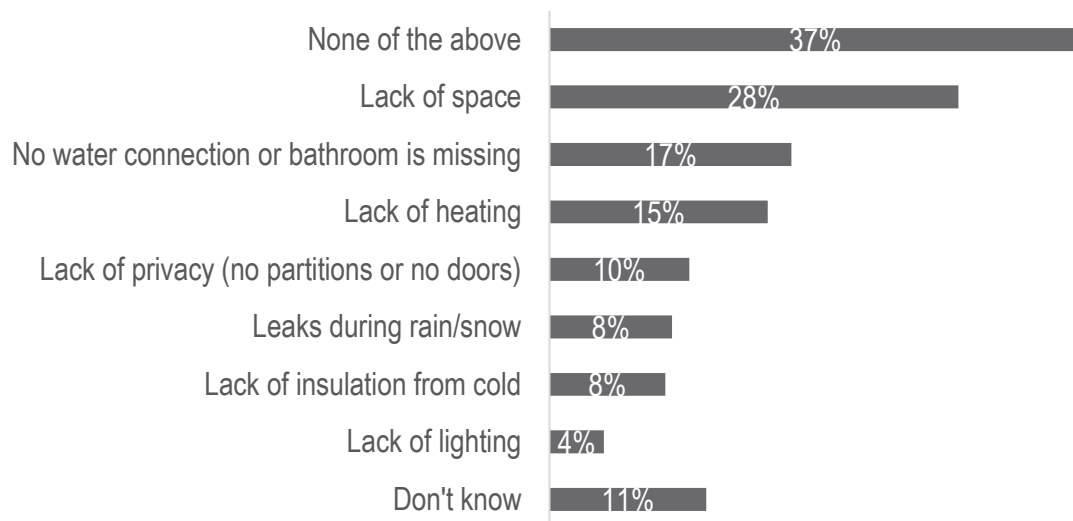
Funded by
European Union
Humanitarian Aid

REACH Informing
more effective
humanitarian action

Sector zoom-in - Shelter/Non-food items (NFI) - 1/3

Population in a refugee-like situation

The most commonly reported **accommodation issues** for HHs in a refugee-like situation



Most commonly reported bedding and clothing non-food items (NFIs) needed by HHs in a refugee-like situation:

- Bedsheets (48%)
- Mattress (47%)
- Towels (46%)
- Blankets (42%)

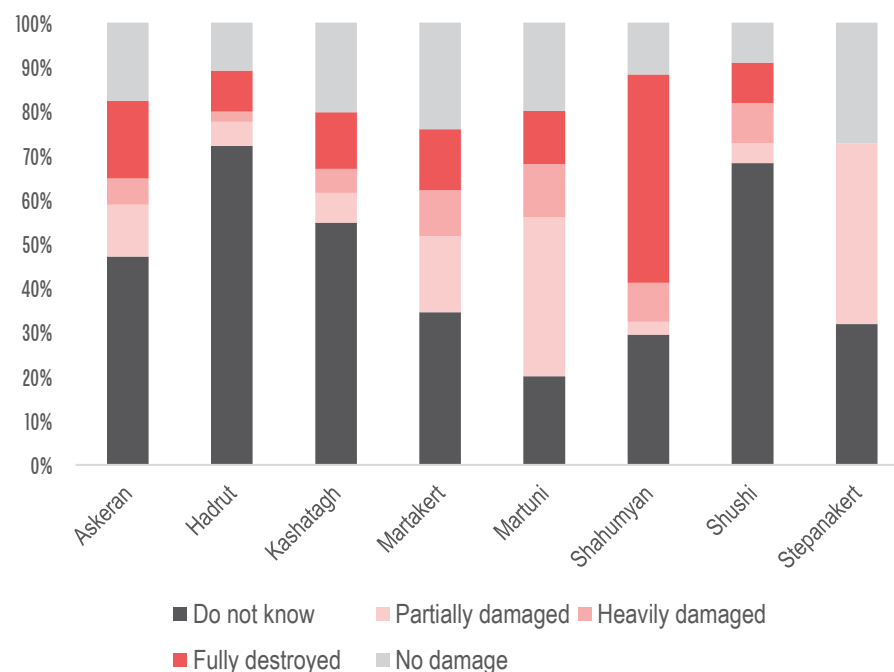
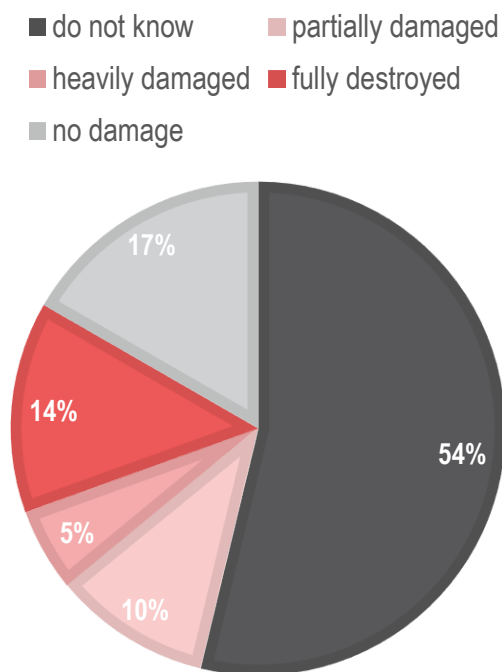


Funded by
European Union
Humanitarian Aid

REACH Informing
more effective
humanitarian action

Sector zoom-in - Shelter/Non-food items (NFI) - 2/3

% of HHs in a refugee-like situation reporting any degree of damage to their shelter in their area of origin as a result of conflict



Among the 41% of HHs in a refugee-like situation reporting shelter damage, only 27% reported having the capacity to repair it with their own resources.

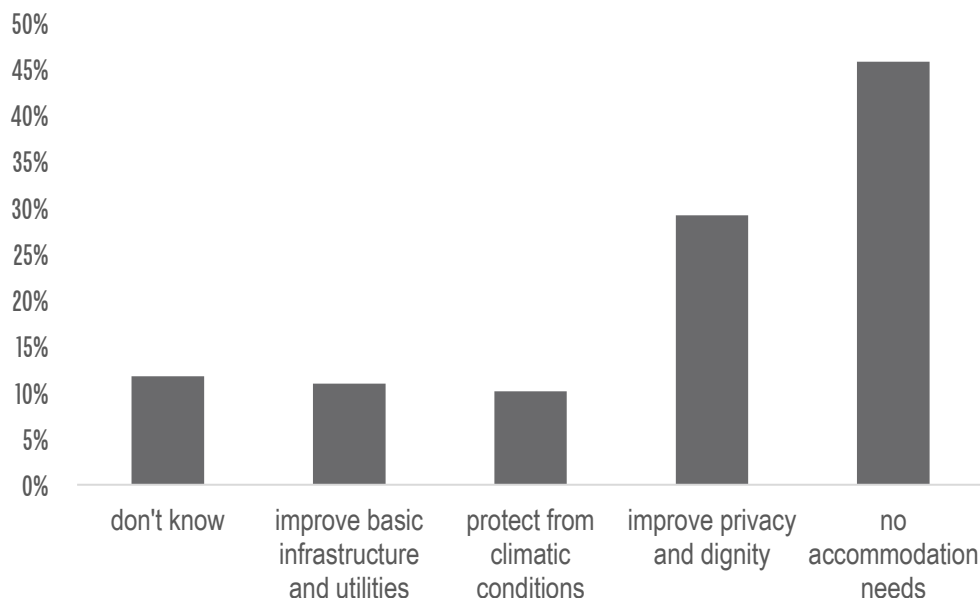


Funded by
European Union
Humanitarian Aid

REACH Informing
more effective
humanitarian action

Sector zoom-in - Shelter/Non-food items (NFI) - 3/3

Hosting HHs



Reported accommodation needs by % of hosting HHs.
More than a half of hosting HHs reported either not having accommodation needs or being uncertain

Most commonly reported **NFIs needed** by hosting HHs:

- bedding items (bedsheets, pillows) (41%)
- cooking utensils (33%)
- mattresses/sleeping mats (27%)

No NFI needs – 40%



Funded by
European Union
Humanitarian Aid

REACH Informing
more effective
humanitarian action

Sector zoom-in – Water, Sanitation, and Hygiene (WASH)

KEY FINDINGS



Main source of drinking water is **tap water** for both hosting HHs and HHs in a refugee-like situation;



In Armavir and Ararat, **trucked in water** was the second most commonly reported water source in both hosting HHs (24% & 17% in both marzes respectively) and HHs in a refugee-like situation (13% & 22%). During the previous round of data collection in the winter, bottled water was the second most commonly reported source in these marzes.



84% of HHs reported currently using a **flush toilet** in their HHs. Pit latrines were reported as the sanitation facility in use in 14% of HHs in a refugee-like situation and 17% of hosting HHs.



The **most commonly reported WASH-related needs** were: washing powder for clothes, soap, cleaning liquid for the house, and detergent for dishes (in descending order).



Funded by
European Union
Humanitarian Aid

REACH Informing
more effective
humanitarian action

Sector zoom-in – Protection

KEY FINDINGS



The vast majority of HHs in a refugee-like situation (87%) and hosting HHs (95%) reported feeling **safe in their current city/town**. Among those HHs reporting being hosted by friends and family members or staying in collective centers (64%), almost all (91%) reported feeling safe to interact with other members of community.

While in Armavir, Gegharkunik, Lori, Shirak, and Vayots Dzor there were no HHs in a refugee-like situation that reported not feeling safe at all in their current location, 10% of HHs in Syunik reported feeling not safe at all.



Debt load remains one of the factors that influences the ability of hosting HHs to host the displaced population; 59% of the hosting HHs reported having **debts**. The median reported debt of those HHs with debts was 1 million Armenian Dram (AMD) (approx. 1,920 United States Dollar (USD)).

No major protection issues were reported by either hosting HHs or HHs in a refugee-like situation in terms of unrelated minors, missing HH members or missing IDs.



Funded by
European Union
Humanitarian Aid

REACH

Informing
more effective
humanitarian action

Sector zoom-in – Food Security – 1/3

KEY FINDINGS



Half (49%) of HHs in a refugee-like situation reported **food distributions** to be among their **main sources of food**, down from 60% during the previous round.



Overall, 89% of HHs in a refugee-like situation and 71% of hosting HHs reported having a **reduced ability to purchase food** compared to the same time last year.;



Hosting HHs were generally found to have more **diverse menus** and consume almost all food groups more frequently than HHs in a refugee-like situation.



Funded by
European Union
Humanitarian Aid

REACH Informing
more effective
humanitarian action

Sector zoom-in – Food Security – 2/3

Number of days when key commodities were consumed in the previous 7 days

		0 days	1 days	2 days	3 days	4 days	5 days	6 days	7 days
Vegetables and Leaves	Refugee-like situation	16%	11%	22%	16%	11%	5%	4%	13%
	Hosting	16%	13%	20%	17%	8%	4%	2%	19%
Fruits	Refugee-like situation	8%	12%	18%	17%	11%	8%	4%	20%
	Hosting	12%	11%	19%	18%	9%	8%	2%	17%
Meat or Fish	Refugee-like situation	15%	24%	21%	16%	9%	5%	2%	6%
	Hosting	19%	21%	26%	13%	9%	3%	1%	5%
Eggs	Refugee-like situation	10%	11%	15%	18%	14%	8%	3%	18%
	Hosting	6%	9%	17%	19%	22%	7%	4%	15%
Pulses, Nuts, Seeds	Refugee-like situation	11%	9%	16%	15%	16%	11%	6%	13%
	Hosting	8%	14%	18%	22%	13%	13%	3%	8%
Dairy Products	Refugee-like situation	8%	7%	15%	18%	11%	8%	6%	23%
	Hosting	8%	6%	14%	15%	14%	11%	4%	26%
Oil and Fat	Refugee-like situation	1%	1%	4%	4%	4%	9%	7%	68%
	Hosting	0%	0%	1%	4%	4%	6%	8%	74%
Sugar or Sweets	Refugee-like situation	5%	4%	11%	15%	12%	8%	7%	36%
	Hosting	2%	4%	7%	14%	18%	13%	6%	34%
Condiments and Spices	Refugee-like situation	0%	0%	1%	2%	6%	4%	6%	78%
	Hosting	0%	0%	0%	1%	2%	3%	6%	85%
Cereals	Refugee-like situation	16%	11%	22%	16%	11%	5%	4%	13%
	Hosting	16%	13%	20%	17%	8%	4%	2%	19%
Roots and Tubers	Refugee-like situation	8%	12%	18%	17%	11%	8%	4%	20%
	Hosting	12%	11%	19%	18%	9%	8%	2%	17%



Funded by
European Union
Humanitarian Aid

REACH Informing
more effective
humanitarian action

Sector zoom-in – Food Security – 3/3

Most commonly reported consumption coping strategies reportedly used by HHs at least one day in the week

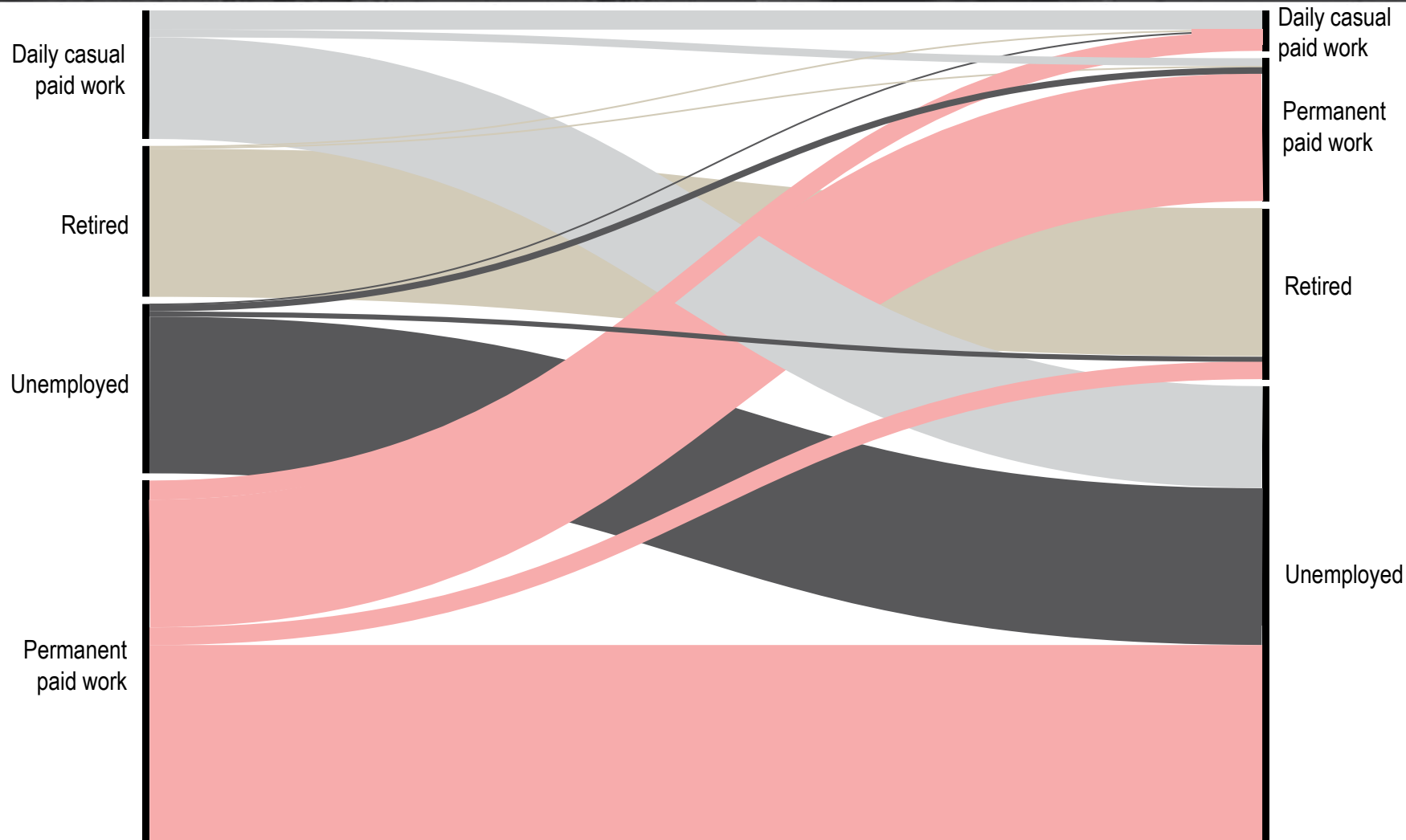
	Hosting HHs	HHs in a refugee-like situation
Had to rely on less expensive food	68%	63%
Had to borrow food	45%	36%
Had to limit portion size	48%	51%
Adults in the HH had to limit food consumption	37%	34%
Had to reduce number of meals	45%	46%



Funded by
European Union
Humanitarian Aid

REACH Informing
more effective
humanitarian action

Change of employment situation for heads of HHs in a refugee-like situation



Funded by
European Union
Humanitarian Aid

REACH Informing
more effective
humanitarian action

Sector zoom-in – Livelihoods – 1/2

KEY FINDINGS



31% of HHs in a refugee-like situation reported being **dependent on aid or remittances** at the time of data collection, compared to 11% of hosting HHs.



The average reported monthly expenditures for hosting HHs was **173,154 AMD**, compared to **159,035 AMD** for HHs in a refugee like situation. Overall, food items made up 53% of the average monthly HH expenditure.



While most (67%) of HHs in a refugee-like situation reported they had livestock before the conflict but did not manage to bring it to RA, 7% of HHs reported having taken livestock with them from Nagorno-Karabakh, primarily in Vayots Dzor and Syunik.

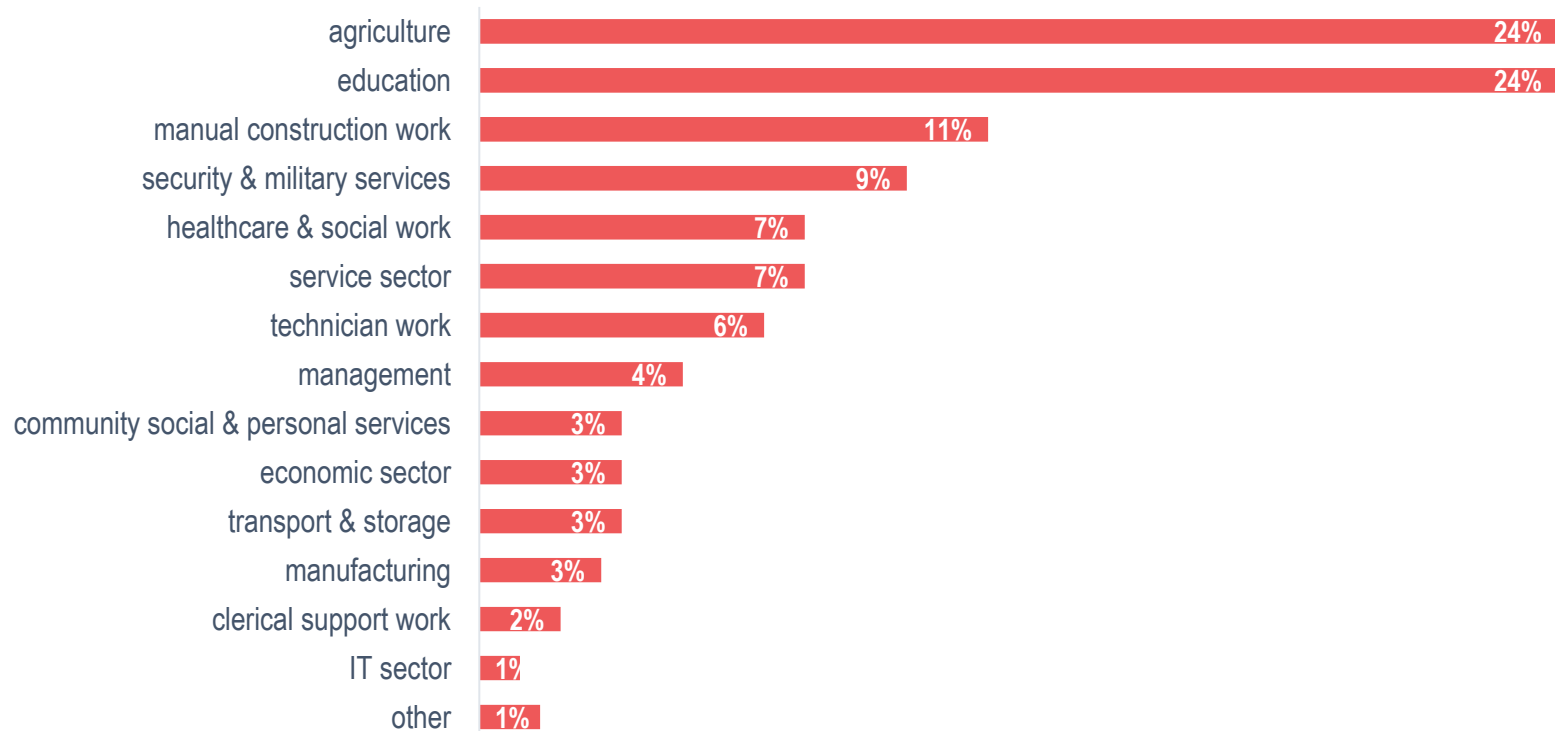


Funded by
European Union
Humanitarian Aid

REACH Informing
more effective
humanitarian action

Sector zoom-in – Livelihoods – 2/2

Reported professional sector of HH heads in a refugee-like situation before displacement



Funded by
European Union
Humanitarian Aid

REACH Informing
more effective
humanitarian action

Sector zoom-in – Education



The majority of hosting HHs (52%) and HHs in a refugee-like situation (56%) reported having **school-aged children**. Both groups reported having a formal educational facility available near their current place of residence (80% for both groups);



For those HHs who reported having a formal educational facility available, 94% of HHs in a refugee-like situation and 92% of hosting HHs reported that all school-aged children in their HHs attend formal education;



Among the 56% of HHs in a refugee-like situation with school-aged children, 27% reported that children **did not have some school supplies** needed for education. Among 52% of the respective share of hosting HHs, 30% reported some school supplies missing.



Funded by
European Union
Humanitarian Aid

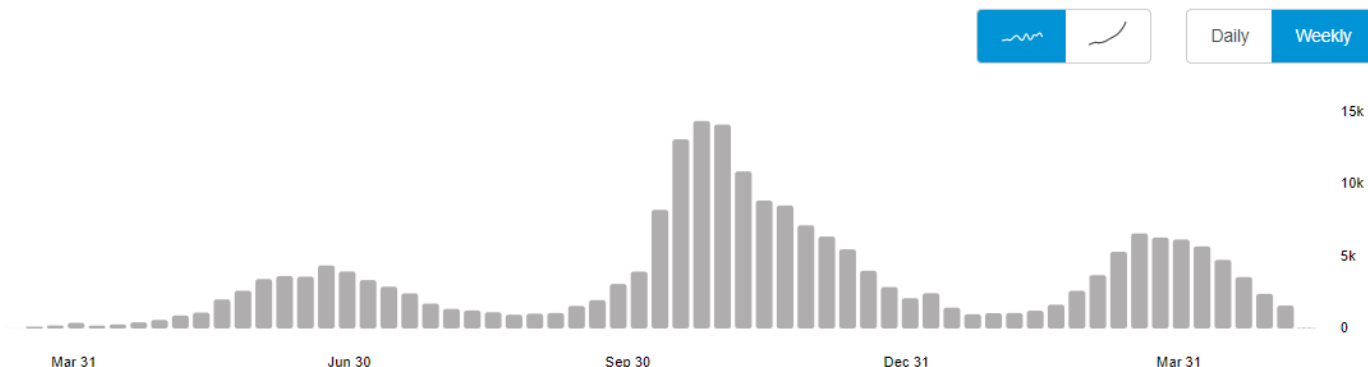
REACH Informing
more effective
humanitarian action

Zoom-in on COVID-19 dynamics

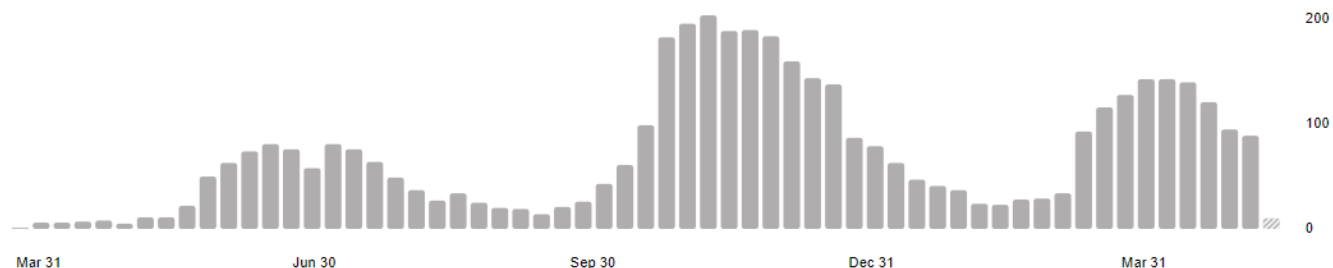
In **Armenia**, from **3 January 2020** to **11:41am CEST, 18 May 2021**, there have been **220,927 confirmed cases** of COVID-19 with **4,333 deaths**, reported to WHO. As of **30 March 2021**, a total of **565 vaccine doses** have been administered.*

Armenia Situation

220,927
confirmed cases



4,333
deaths



Source: World Health Organization
Data may be incomplete for the current day or week.

Source: <https://covid19.who.int/region/euro/country/am>

* - according to the official Facebook account of the Armenian Ministry of Health, 19,249 people were vaccinated as of 16 May



Funded by
European Union
Humanitarian Aid

REACH Informing
more effective
humanitarian action

Health and COVID-19



- **42%** of hosting HHs and **53%** of HHs in a refugee-like situation reported that at least one HH member had needed **specialized health care** in their current location since December 2020. Compared to the previous round, a much smaller share of HHs reported **not having been able to contact or visit a local healthcare provider** when needed; 8% of HHs in a refugee-like situation and 9% of hosting HHs, compared to 45% and 31% during the previous round, respectively.



- **A bigger share of hosting HHs** (86% compared to 77% for HHs in a refugee-like situation) reported that all their HH members **have taken actions** to prevent themselves **from getting COVID-19**. Overall, 10% of HHs reported at least one member of their HH had been tested positive for COVID-19.



- If offered a **vaccine** against COVID-19, almost 90% of HHs from both population groups reported that they either **will not take or are unsure to take** it.



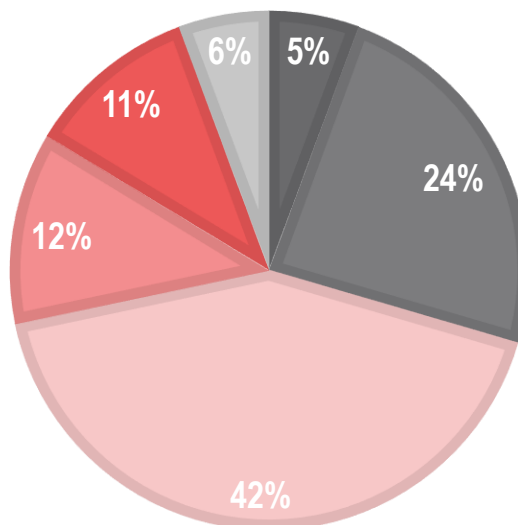
Funded by
European Union
Humanitarian Aid

REACH Informing
more effective
humanitarian action

Accountability to affected populations (AAP)

% of HHs reporting the degree to which assistance from local authorities meets the needs of people in their area

- meets all needs
- meets most needs
- partially met
- most needs are not met
- no needs are met
- don't know / prefer not to say



Funded by
European Union
Humanitarian Aid

REACH Informing
more effective
humanitarian action



Conclusions

- Compared to the previous round, the displacement situation is not as dynamic, as a bigger share of HHs in a refugee-like situation are not intending to move or are unlikely to return.
- While the reported sector-specific needs did not drastically change, the employment situation for the HHs in a refugee-like situation seems to have worsened.
- The perception of safety at the current place seems to have worsened for the population in a refugee-like situation, particularly in Syunik, where 10% of the HHs in a refugee-like situation reported not feeling safe at all and 6% reported feeling rather unsafe.
- Priority needs for hosting HHs and HHs in a refugee-like situation appeared to be similar to those reported in the previous round. The most commonly reported priority needs for hosting HHs are reflected in their preferred assistance needed to continue hosting HHs in a refugee-like situation.



Funded by
European Union
Humanitarian Aid

REACH Informing
more effective
humanitarian action



Information gaps & Next Steps

Ongoing activities:

- **NK census** is being finalized by Armenian Association of Social Workers (AASW)
- Assessment of **all the HHs in a refugee-like situation in Armenia** is being finalized by AASW
- **Recovery and integration** needs of **communities** hosting most HHs in a refugee-like situation is underway

Information gaps:

- **Collective centers' monitoring**
- **Movements** to and from NK



Funded by
European Union
Humanitarian Aid

REACH Informing
more effective
humanitarian action