



AFGHANISTAN

Hard to Reach Districts

Map Collection
North and North East
Regions

January 2020



OCHA

REACH Informing
more effective
humanitarian action

TABLE OF CONTENTS

HTR | 2019
AFGHANISTAN

CONTEXT AND METHODOLOGY.....	4	KHWAJA SABZ POSH DISTRICT.....	26
COVERAGE MAP	5	KOHISTAN DISTRICT	27
BADAKHSHAN.....	6	PASHTUN KOT DISTRICT	28
JORM DISTRICT	6	QAYSAR DISTRICT	29
RAGHESTAN DISTRICT	7	SHIRIN TAGAB DISTRICT	30
BAGHLAN.....	8	SAR-E-PUL.....	31
BAGHLAN-E-JADID DISTRICT.....	8	KOHESTANAT DISTRICT	31
DAHANA-E-GHORI DISTRICT	9	SOZMAQALA DISTRICT.....	32
PUL-E-KHUMRI DISTRICT.....	10		
KUNDUZ	11		
CHAHAR DARAH DISTRICT	11		
DASHT-E-ARCHI DISTRICT.....	12		
IMAM SAHIB DISTRICT	13		
KHAN ABAD DISTRICT.....	14		
QALA-E-ZAL DISTRICT.....	15		
TAKHAR.....	16		
DASHT-E-QALA DISTRICT	16		
ESHKAMESH DISTRICT	17		
KHWAJA GHAR DISTRICT	18		
ROSTAQ DISTRICT	19		
BALKH.....	20		
CHEMTAL DISTRICT.....	20		
FARYAB	21		
ALMAR DISTRICT.....	21		
ANDKHOY DISTRICT.....	22		
BILCHERAGH DISTRICT	23		
DAWLAT ABAD DISTRICT	24		
GURZEWAN DISTRICT	25		

Overview

The Hard to Reach (HtR) assessment aims to identify and regularly monitor humanitarian needs and vulnerabilities of populations in districts with high levels of inaccessibility. The specific objective of this assessment is to provide an evidence-base to support humanitarian actors' understanding of needs across all areas of Afghanistan, irrespective of access constraints, in order to inform adequate humanitarian targeting and programming. It is important to note that inaccessibility does not necessarily translate into greater need, rather, inaccessibility means that information on needs in inaccessible area is scarcer. This booklet presents the first and second round of mapping and data collection, on the basis of which, REACH will conduct continuous monitoring rounds of needs assessments in the 120 most inaccessible districts in Afghanistan, every 4 months.

In order to ensure broad coverage of areas and populations in each HtR district, each district was mapped and divided into Basic Service Units (BSUs). REACH enumerators conducted Key Informant Interviews (KII) and participatory mapping sessions with community representatives, in order to identify and map out BSUs. These were defined as geographic areas that have common demographic/socio-economic features and in which settlements rely on the same basic services and facilities, such as health facilities, markets, and schools.

This map collection contains BSU maps for all 120 districts covered in the first and second round of the needs assessment. It is complementary to the Hard to Reach needs assessment factsheet booklet.¹ The mapping activities aimed at providing a comprehensive source of location data to be able to (1) provide a geographic reference for the location of government schools, health services and big markets; (2) inform the humanitarian response in Afghanistan at an operational level; (3) provide a simple visual medium to share with partners to verify and cross-check the accuracy of the data collected.

Methodology

The mapping of the 120 districts was done in three phases: 70 districts were mapped in August 2018, 30 districts were mapped in August 2019 and 20 districts were mapped in December 2019.

The mapping component of the assessment consisted of the following consecutive activities: (1) map settlements and update the settlement list available for each district; (2) identify the presence and access of

services for each settlement; (3) identify settlements belonging to each BSU. The mapping was based on discussions with Key Informants (KI) and meetings with representatives of district shuras and ministries.² Given the high level of inaccessibility conditions of the districts targeted (presence of non-government armed groups, roads/winter conditions, conflict activities, etc.) three mapping scenarios were identified in order to ensure the availability of the KI and the safety of the enumerators.

Mapping scenarios:

Since each HtR district has differing risk and accessibility levels, three methodology scenarios were developed to map districts and ensure that data collected could be tracked.

For each scenario, the first step was to determine the availability of shura and ministries within the districts. Selected profiles that could be contacted as KIs to provide preliminary information on settlements and basic services were (people working in) village administration, Community Development Councils, the Ministry of Rural Rehabilitation and Development, civil society associations, district education departments, health shura representatives, district health department representatives, shura or education district principles, and community-based educators.

Scenario 1: Participatory mapping with shura representatives

Security allows for a participatory mapping exercise in the district center; the availability of the shura representatives fits into the timeframe of the assessment, and KIs accept to travel to the discussion location without compensation.

Scenario 2: Participatory mapping with KIs

Security allows for a participatory mapping exercise in the district center; but shura representatives are not available during this time frame and other type of KIs are found (government representatives, village leaders, teachers, doctors, etc.) who are willing to travel to the discussion location without compensation. In this case, the enumerator ensures to have representatives of different parts of the district present in the participatory mapping exercise.

Scenario 3: No participatory mapping possible. Individual visit of shura representatives and/or KIs

Security does not allow for a participatory mapping exercise, therefore enumerators visit representatives of the shura or representatives of

the government individually to gather information until he/she is able to update all settlements and map all basic services and BSU boundaries. The representatives are not in the district center and therefore the enumerator has to travel around the district.

Activities:

(1) Settlement update:

The first step of the mapping exercise was to collect information at district government level to update the Afghan Geodesy and Cartography Head Office (AGCHO) settlement database and determine: (1) if the settlement exists or not; (2) if the settlement name is spelled correctly; (3) if the location of the settlement is correct; (4) if there are any settlements missing.

(2) Basic service mapping:

The second step was to collect information on the availability and location of services at the settlement level. The settlement services that were mapped were: government schools; major mosque (Friday mosque); small markets (< 20 shops); major markets (> 20 shops); madrasa (religious schools); hospitals; clinics (Basic Health Clinics (BHC) and Community Health Clinics (CHC)).

(3) BSU boundaries mapping:

After the identification of the location of basic services within districts (step 2), participatory mapping sessions with community representatives were held to determine the areas of support of these services (i.e. which settlements share which services), indicating the boundaries of the BSUs within the district.

Limitation

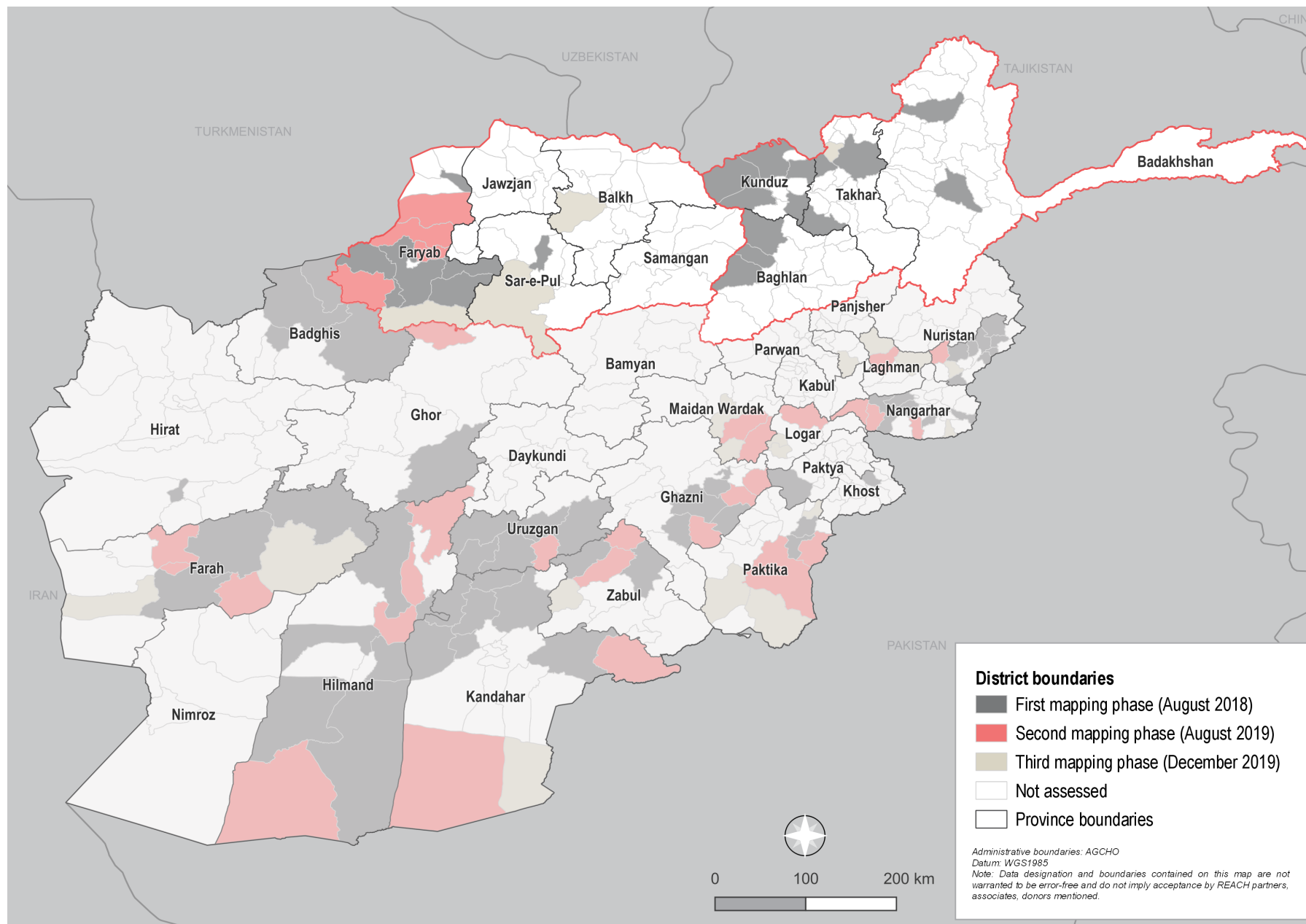
The methodology for the mapping has evolved with each round of data collection even though efforts to harmonize the methodology throughout have been made. It is therefore possible to see discrepancies on how BSUs are defined in different districts; this does not affect the validity of the data regarding the location of basic services. Further, the data has not been verified yet through secondary sources and is based solely on this REACH assessment. The findings should therefore be considered as indicative only.

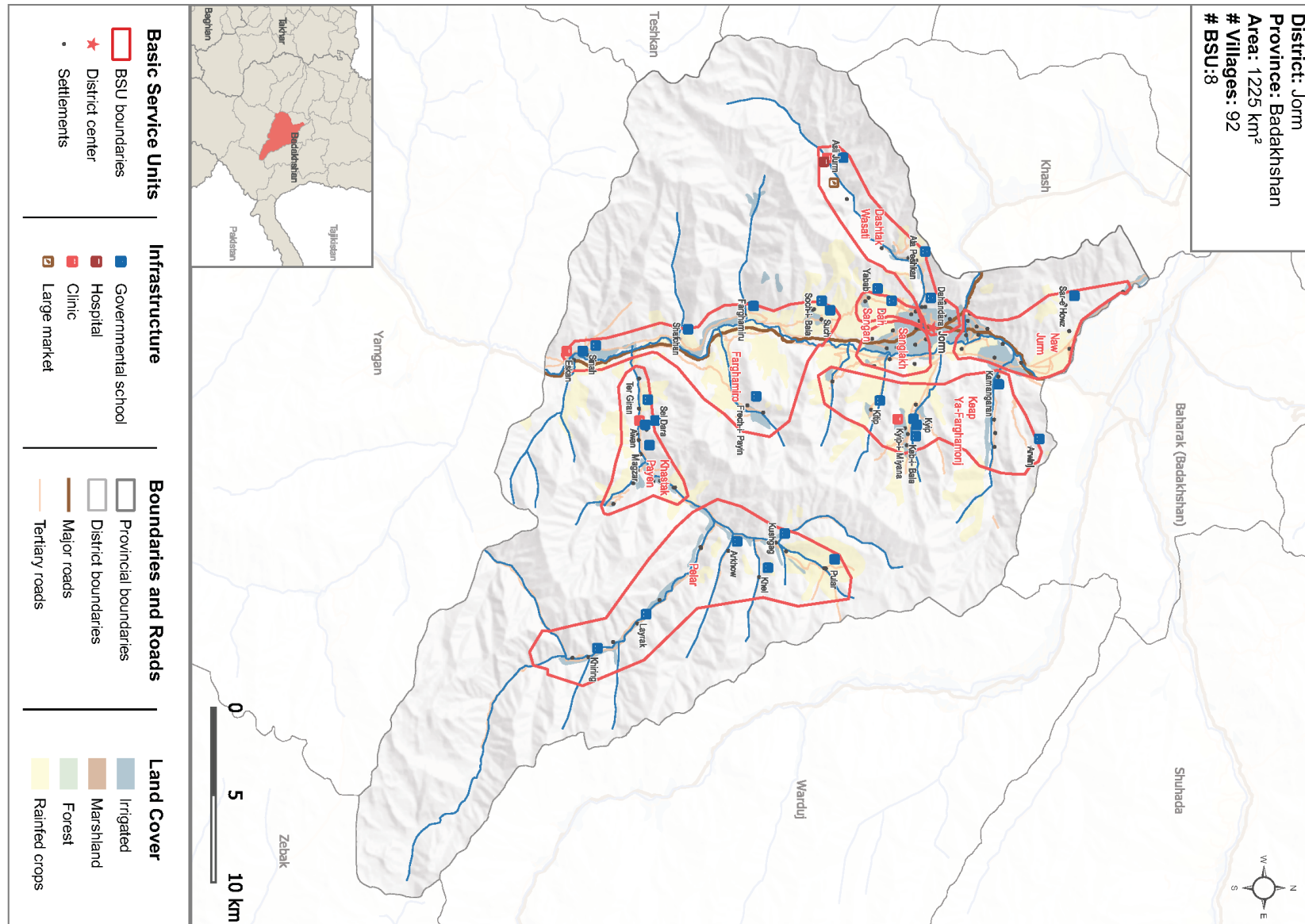
¹ Link to the round 1 Hard to Reach needs assessment available [here](#).

² Shuras are local councils composed of village leaders, elders, representatives. More information on shuras [here](#).

COVERAGE MAP

HTR | 2019
AFGHANISTAN





Projection: WGS84

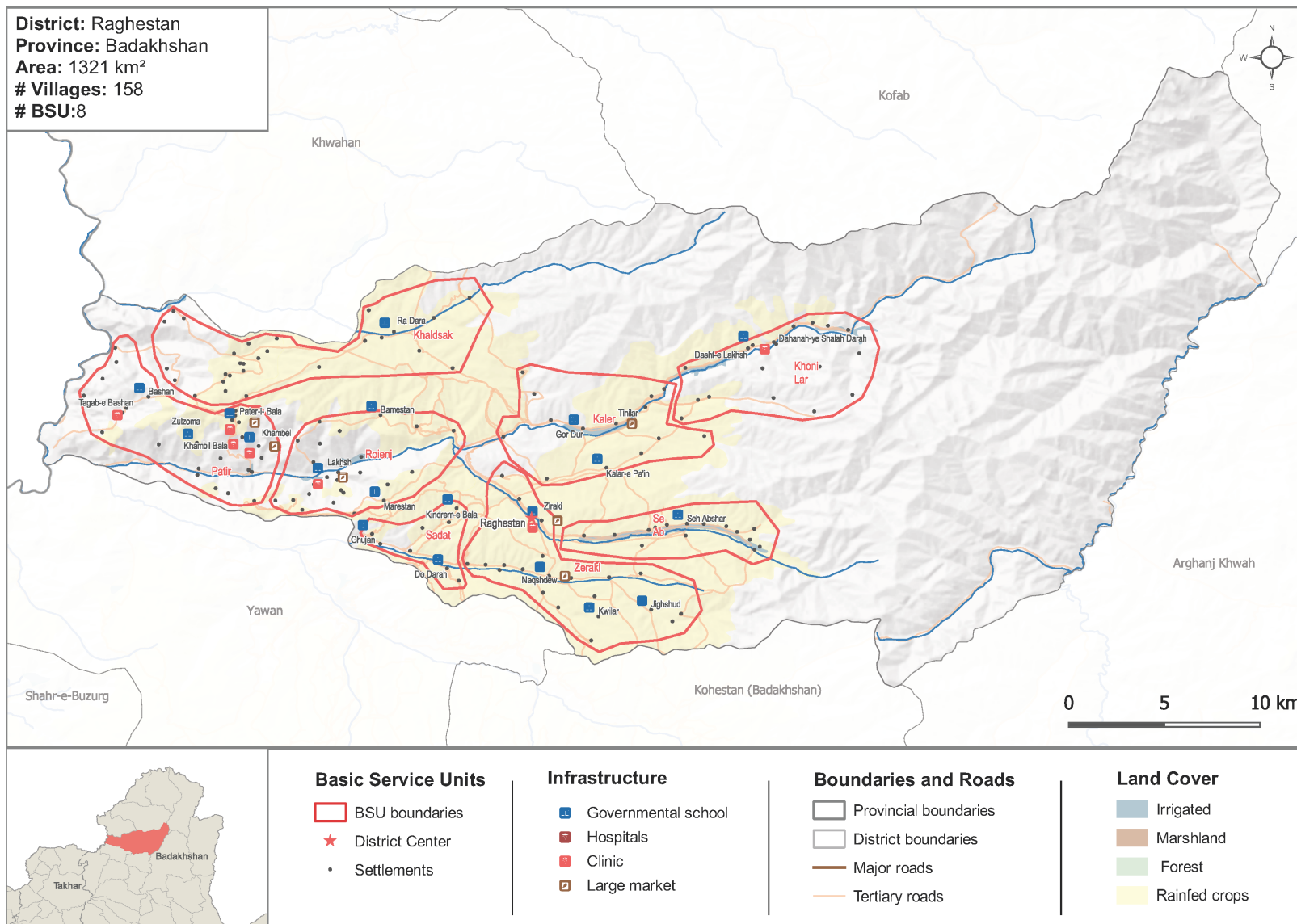
Data sources: Afghan Geodesy and Cartography Head Office (AGCHO): Administrative boundaries, Land cover, DEM and hydrography

REACH: Basic Service Units boundaries, settlements, health services, education facilities and markets. Open Street Map (OSM): Roads

Note: Data, designations and boundaries contained on this map are not warranted to be error-free and do not imply acceptance by the REACH partners, associated, donors mentioned on this map.

BADAKHSHAN RAGHESTAN DISTRICT

HTR | 2020
AFGHANISTAN



Projection: WGS84

Data sources: Afghan Geodesy and Cartography Head Office (AGCHO): Administrative boundaries, Land cover, DEM and hydrography

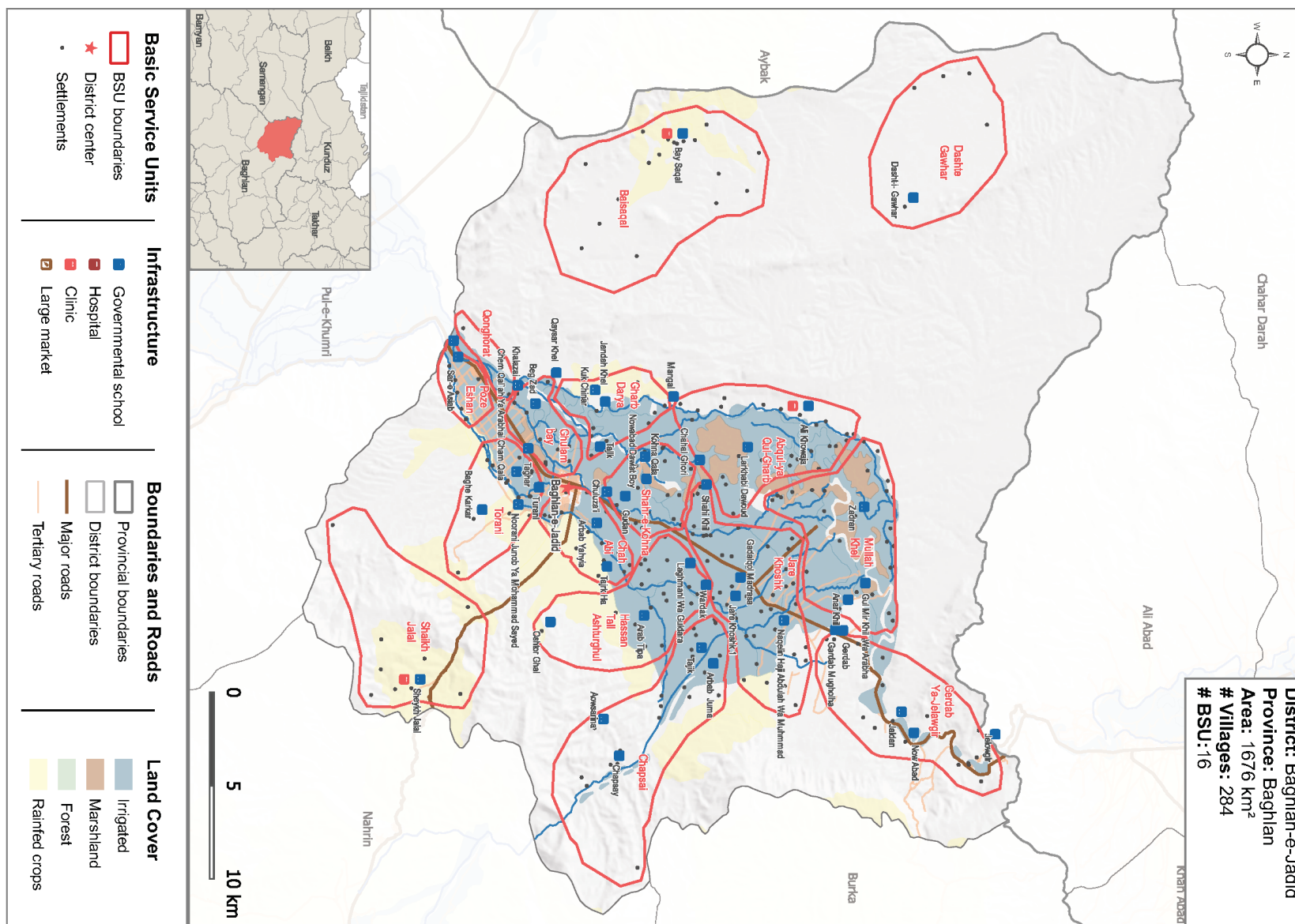
REACH: Basic Service Units boundaries, settlements, health services, education facilities and markets. Open Street Map (OSM): Roads

Note: Data, designations and boundaries contained on this map are not warranted to be error-free and do not imply acceptance by the REACH partners, associated, donors mentioned on this map.

BAGHLAN

BAGHLAN-E-JADID DISTRICT

HTR | 2020
AFGHANISTAN



Projection: WGS84

Data sources: Afghan Geodesy and Cartography Head Office (AGCHO): Administrative boundaries, Land cover, DEM and hydrography

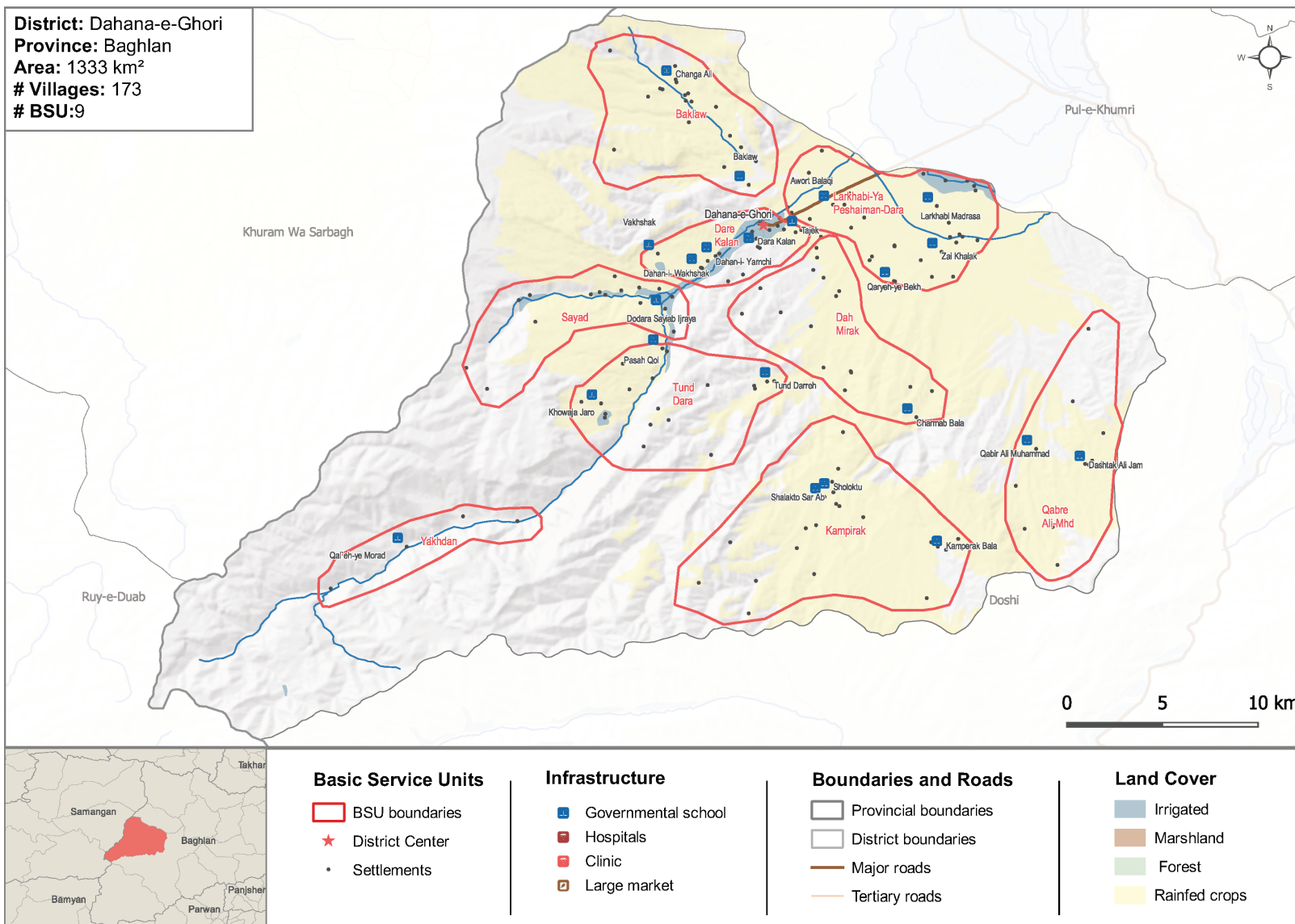
REACH: Basic Service Units boundaries, settlements, health services, education facilities and markets. Open Street Map (OSM): Roads

Note: Data, designations and boundaries contained on this map are not warranted to be error-free and do not imply acceptance by the REACH partners, associated, donors mentioned on this map.

BAGHLAN

DAHANA-E-GHORI DISTRICT

HTR | 2020
AFGHANISTAN



Projection: WGS84

Data sources: Afghan Geodesy and Cartography Head Office (AGCHO): Administrative boundaries, Land cover, DEM and hydrography

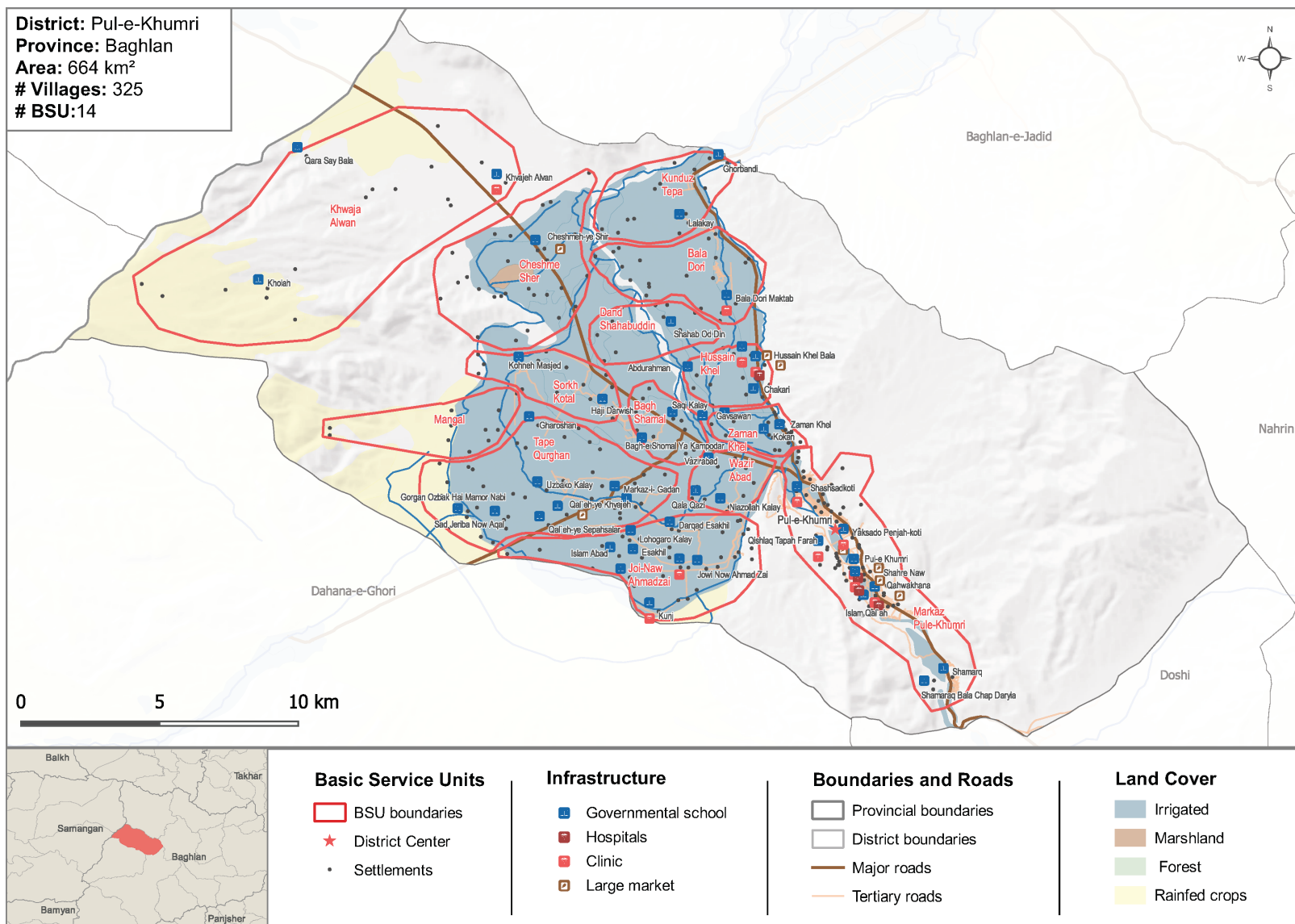
REACH: Basic Service Units boundaries, settlements, health services, education facilities and markets. Open Street Map (OSM): Roads

Note: Data, designations and boundaries contained on this map are not warranted to be error-free and do not imply acceptance by the REACH partners, associated, donors mentioned on this map.

BAGHLAN

PUL-E-KHUMRI DISTRICT

HTR | 2020
AFGHANISTAN



Projection: WGS84

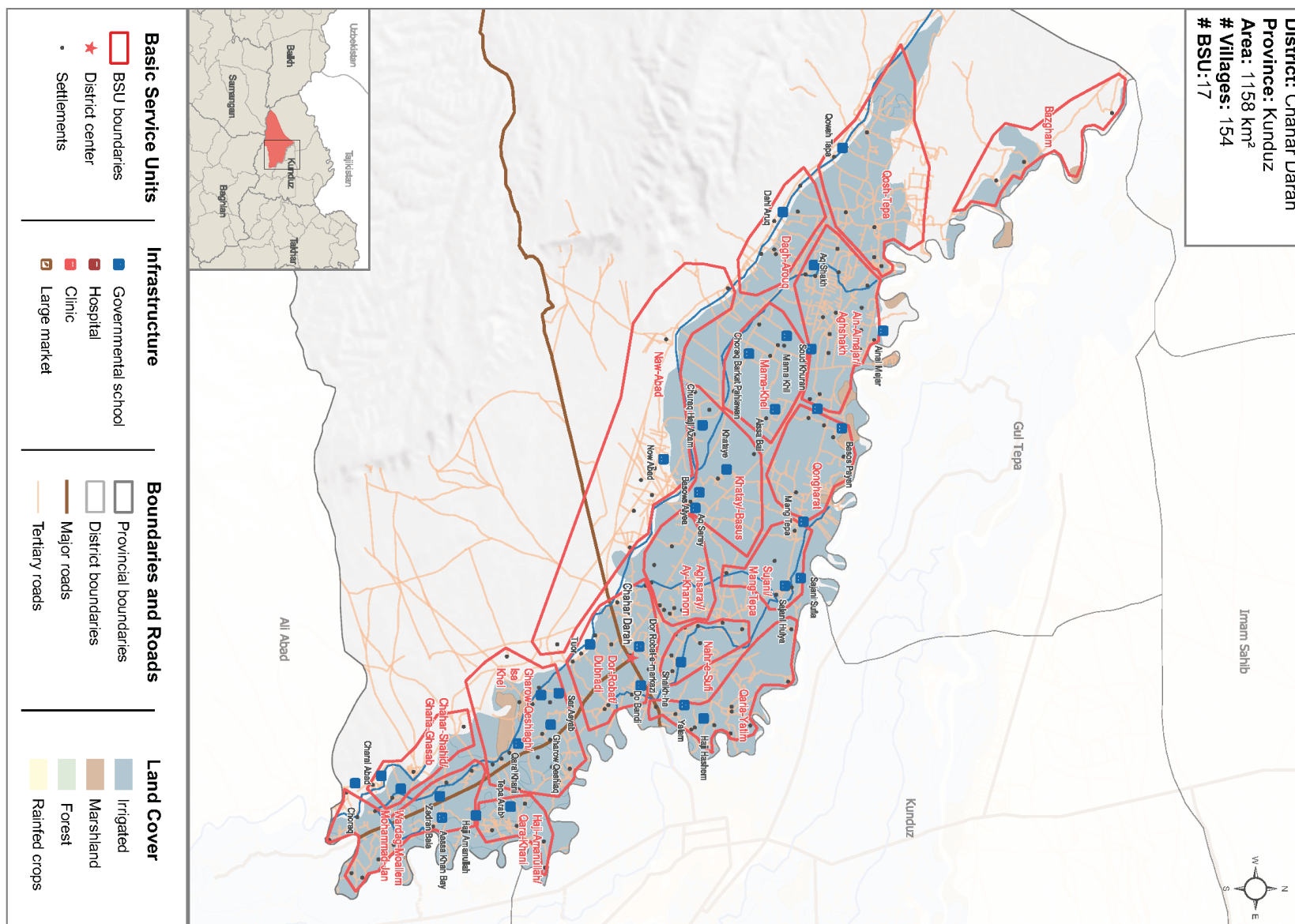
Data sources: Afghan Geodesy and Cartography Head Office (AGCHO): Administrative boundaries, Land cover, DEM and hydrography

REACH: Basic Service Units boundaries, settlements, health services, education facilities and markets. Open Street Map (OSM): Roads

Note: Data, designations and boundaries contained on this map are not warranted to be error-free and do not imply acceptance by the REACH partners, associated, donors mentioned on this map.

KUNDUZ CHAHAR DARAH DISTRICT

HTR | 2020
AFGHANISTAN

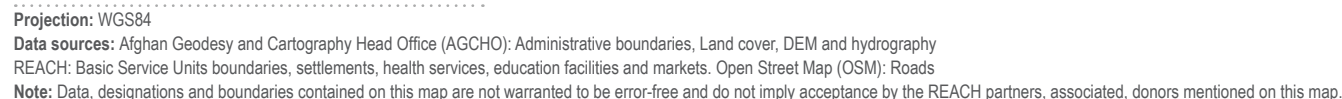


Projection: WGS84

Data sources: Afghan Geodesy and Cartography Head Office (AGCHO): Administrative boundaries, Land cover, DEM and hydrography

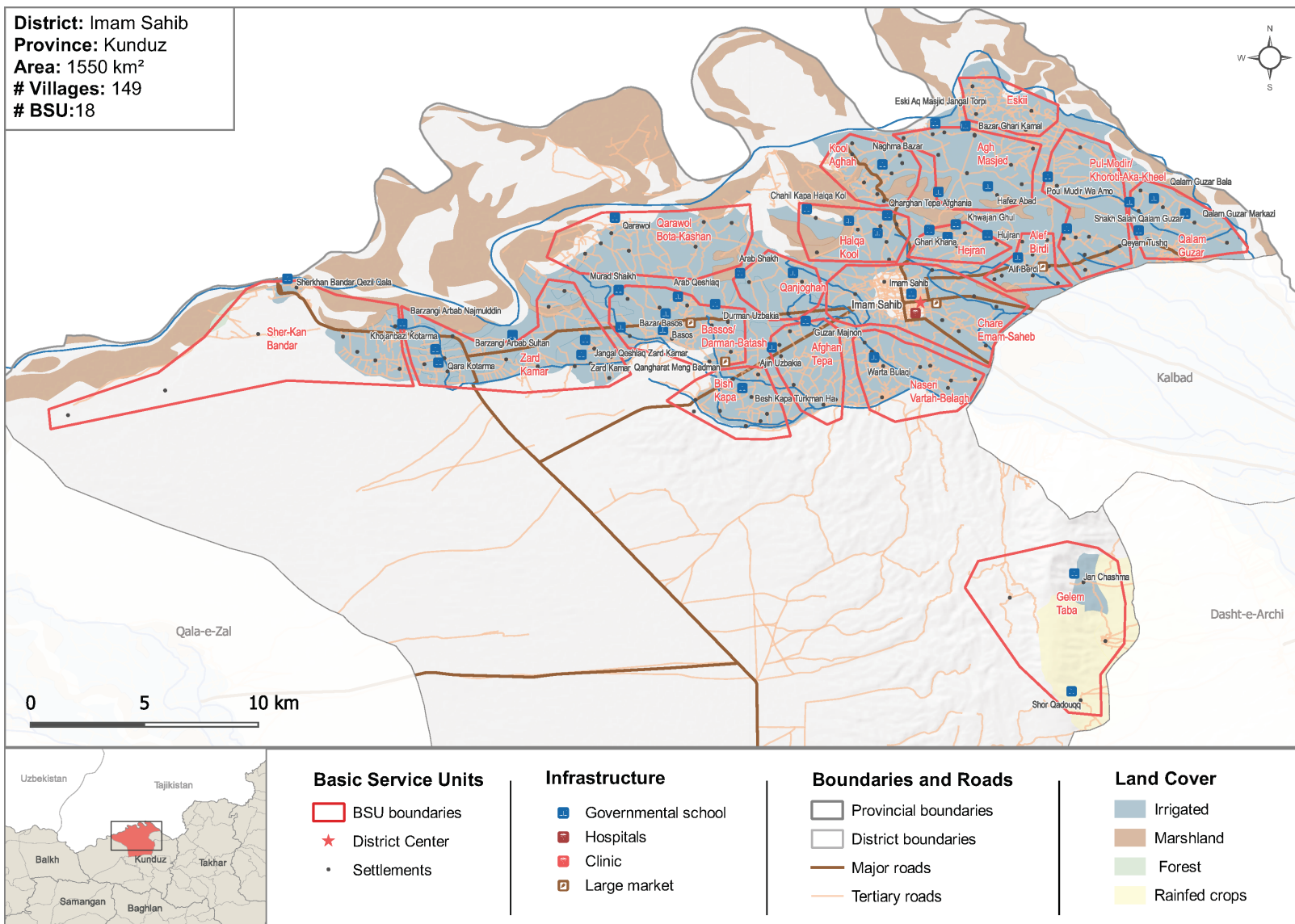
REACH: Basic Service Units boundaries, settlements, health services, education facilities and markets. Open Street Map (OSM): Roads

Note: Data, designations and boundaries contained on this map are not warranted to be error-free and do not imply acceptance by the REACH partners, associated, donors mentioned on this map.



KUNDUZ IMAM SAHIB DISTRICT

HTR | 2020
AFGHANISTAN



Projection: WGS84

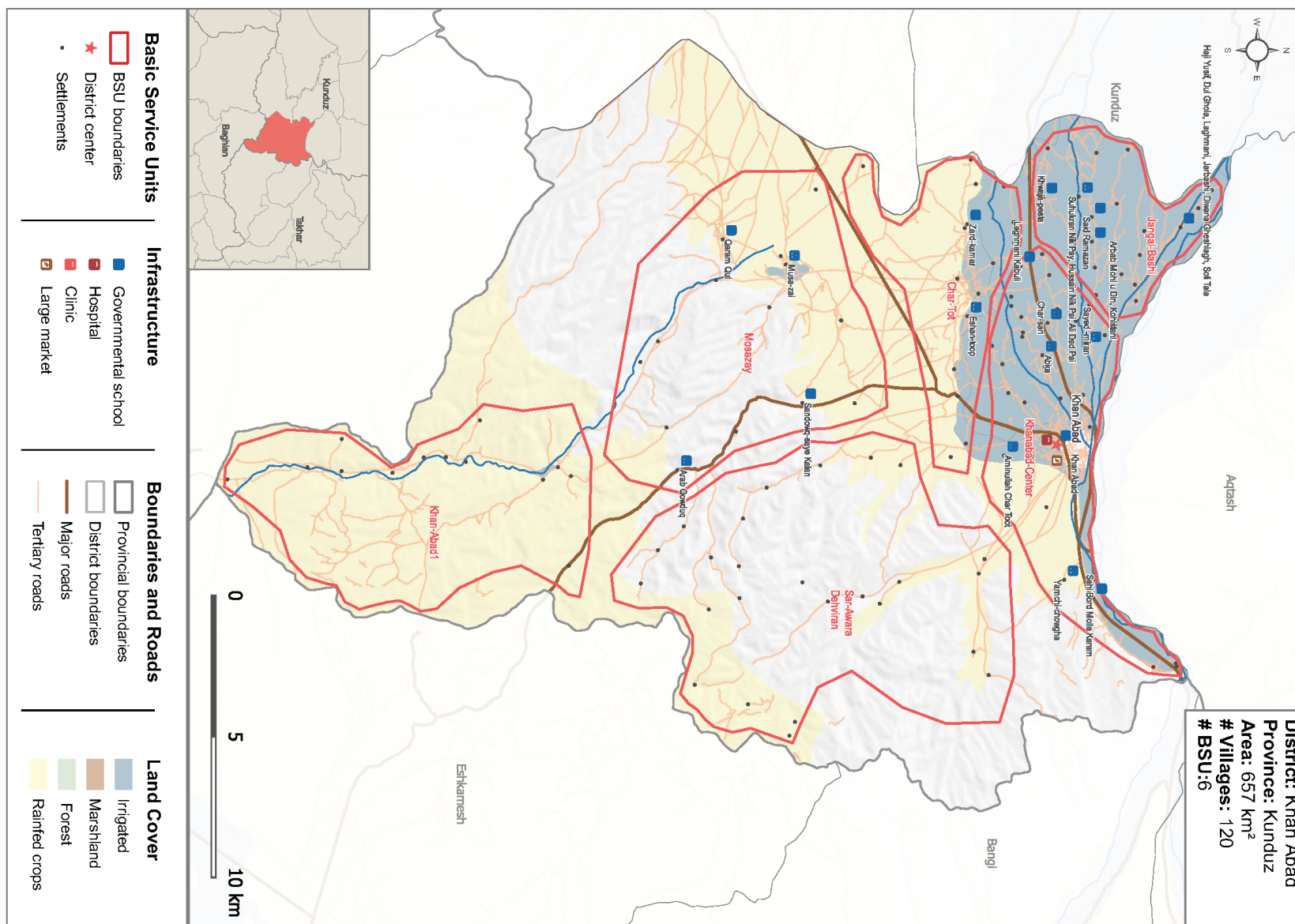
Data sources: Afghan Geodesy and Cartography Head Office (AGCHO): Administrative boundaries, Land cover, DEM and hydrography

REACH: Basic Service Units boundaries, settlements, health services, education facilities and markets. Open Street Map (OSM): Roads

Note: Data, designations and boundaries contained on this map are not warranted to be error-free and do not imply acceptance by the REACH partners, associated, donors mentioned on this map.

KUNDUZ KHAN ABAD DISTRICT

HTR | 2020
AFGHANISTAN



Projection: WGS84

Data sources: Afghan Geodesy and Cartography Head Office (AGCHO): Administrative boundaries, Land cover, DEM and hydrography

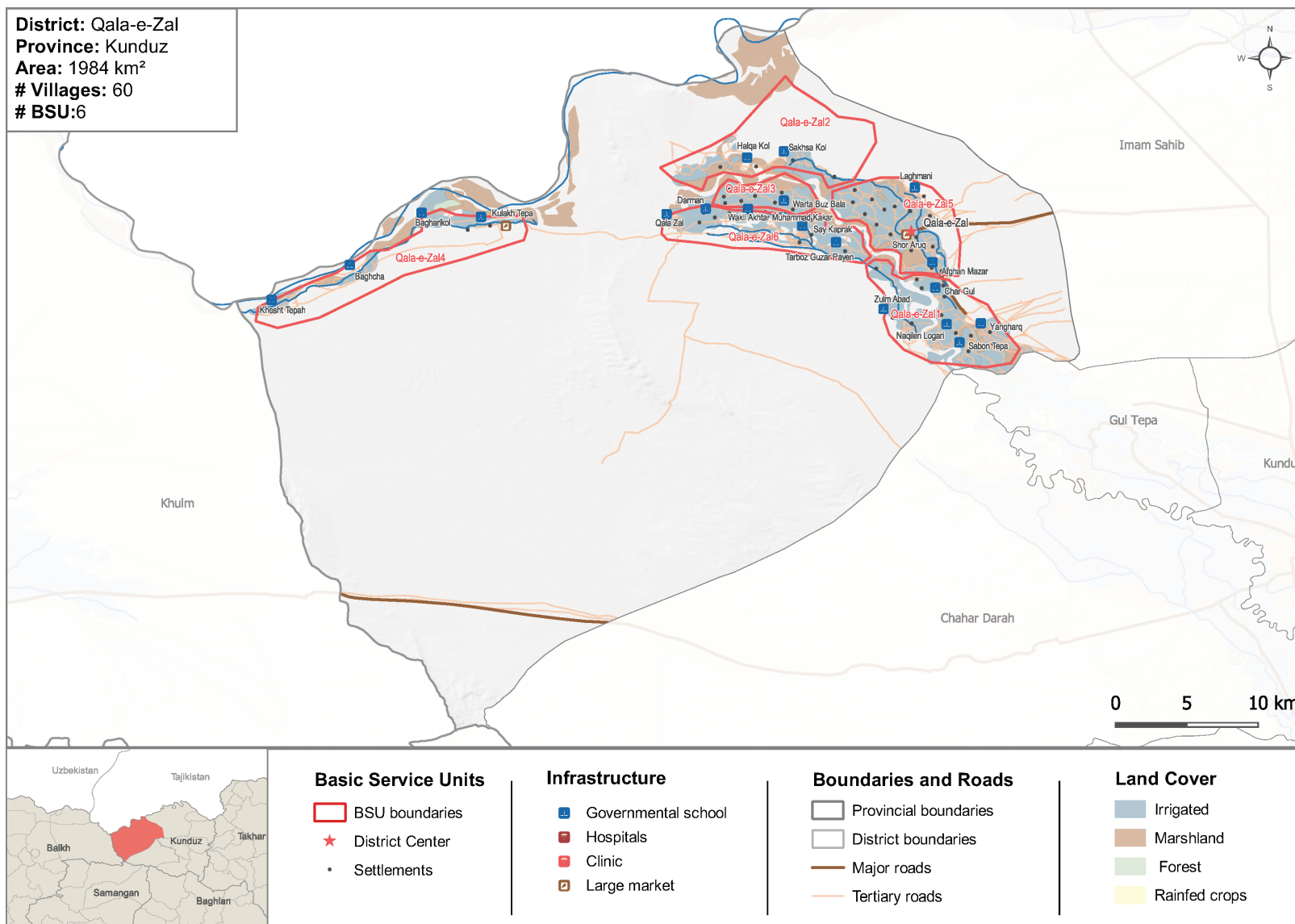
REACH: Basic Service Units boundaries, settlements, health services, education facilities and markets. Open Street Map (OSM): Roads

Note: Data, designations and boundaries contained on this map are not warranted to be error-free and do not imply acceptance by the REACH partners, associated, donors mentioned on this map.

KUNDUZ

QALA-E-ZAL DISTRICT

HTR | 2020
AFGHANISTAN

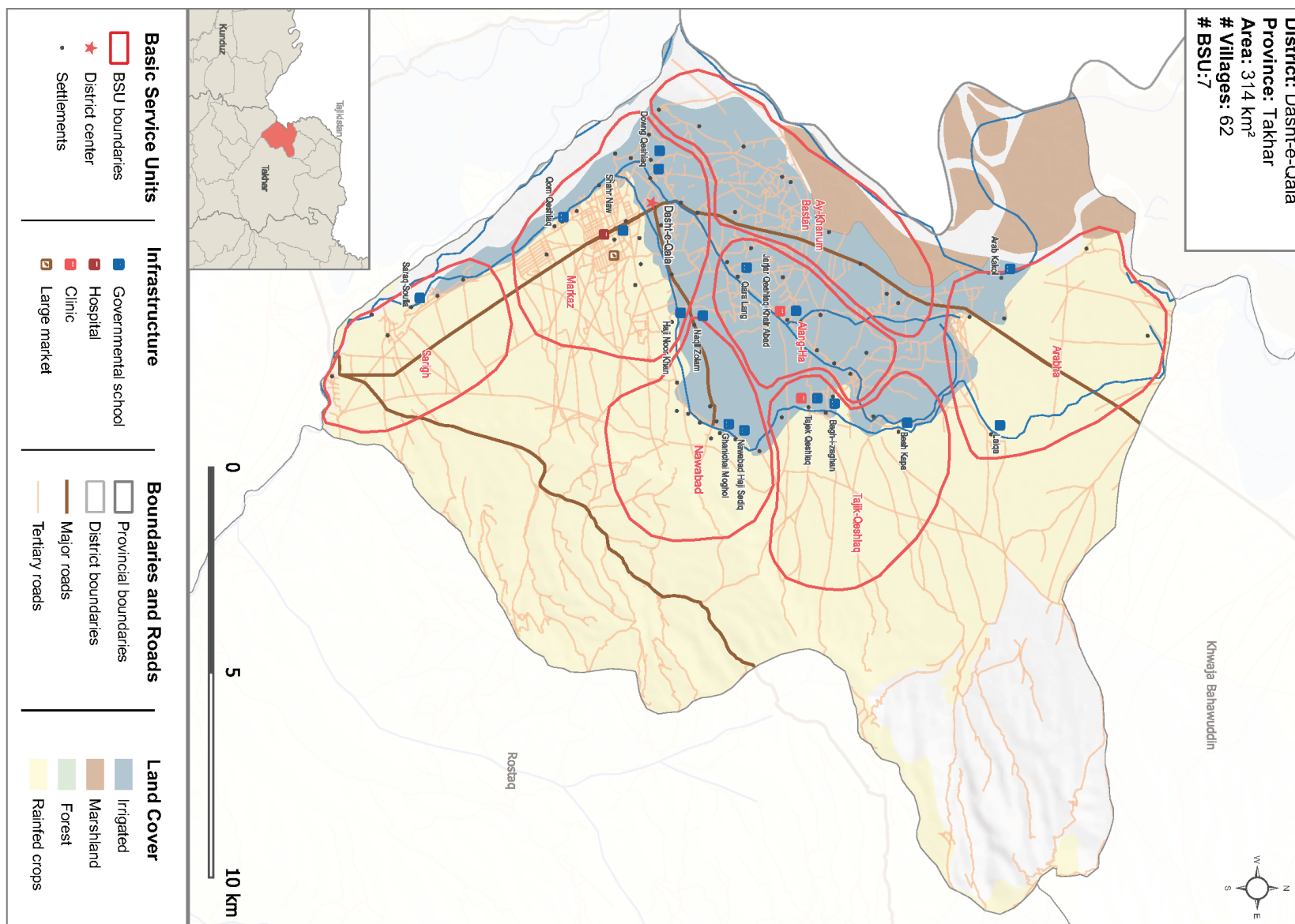


Projection: WGS84

Data sources: Afghan Geodesy and Cartography Head Office (AGCHO): Administrative boundaries, Land cover, DEM and hydrography

REACH: Basic Service Units boundaries, settlements, health services, education facilities and markets. Open Street Map (OSM): Roads

Note: Data, designations and boundaries contained on this map are not warranted to be error-free and do not imply acceptance by the REACH partners, associated, donors mentioned on this map.



Projection: WGS84

Data sources: Afghan Geodesy and Cartography Head Office (AGCHO): Administrative boundaries, Land cover, DEM and hydrography

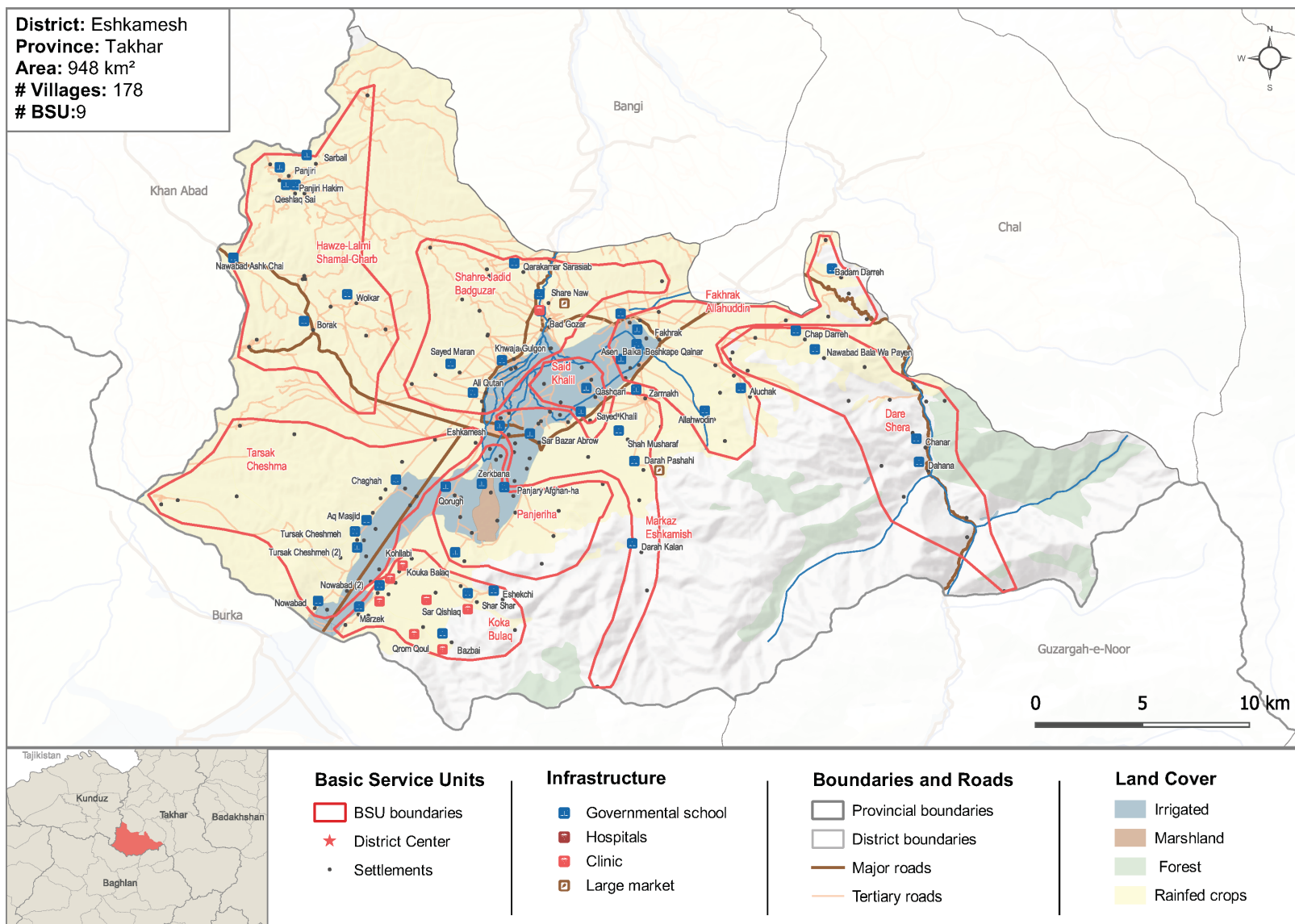
REACH: Basic Service Units boundaries, settlements, health services, education facilities and markets. Open Street Map (OSM): Roads

Note: Data, designations and boundaries contained on this map are not warranted to be error-free and do not imply acceptance by the REACH partners, associated, donors mentioned on this map.

TAKHAR

ESHKAMESH DISTRICT

HTR | 2020
AFGHANISTAN



Projection: WGS84

Data sources: Afghan Geodesy and Cartography Head Office (AGCHO): Administrative boundaries, Land cover, DEM and hydrography

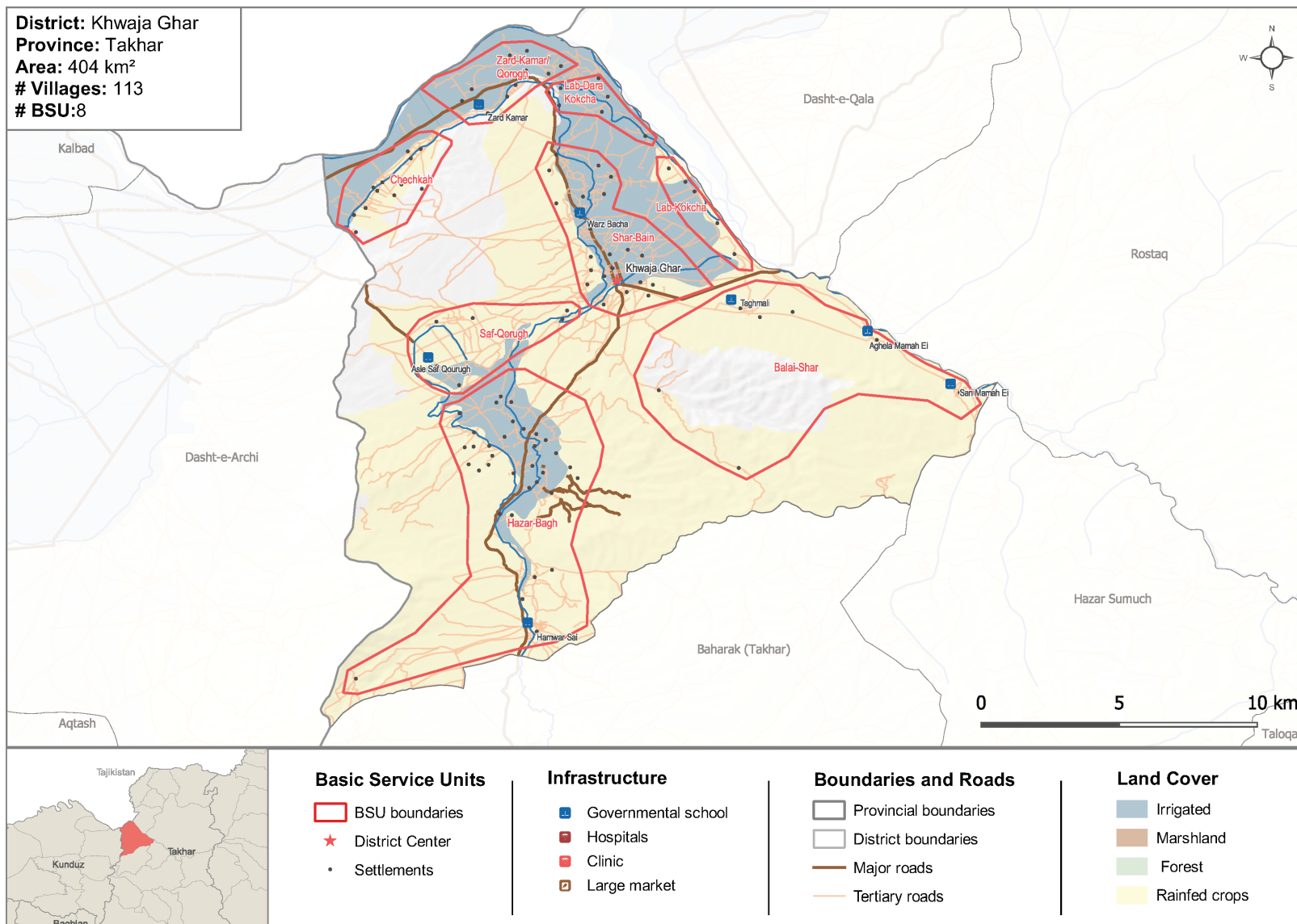
REACH: Basic Service Units boundaries, settlements, health services, education facilities and markets. Open Street Map (OSM): Roads

Note: Data, designations and boundaries contained on this map are not warranted to be error-free and do not imply acceptance by the REACH partners, associated, donors mentioned on this map.

TAKHAR

KHWAJA GHAR DISTRICT

HTR | 2020
AFGHANISTAN



Projection: WGS84

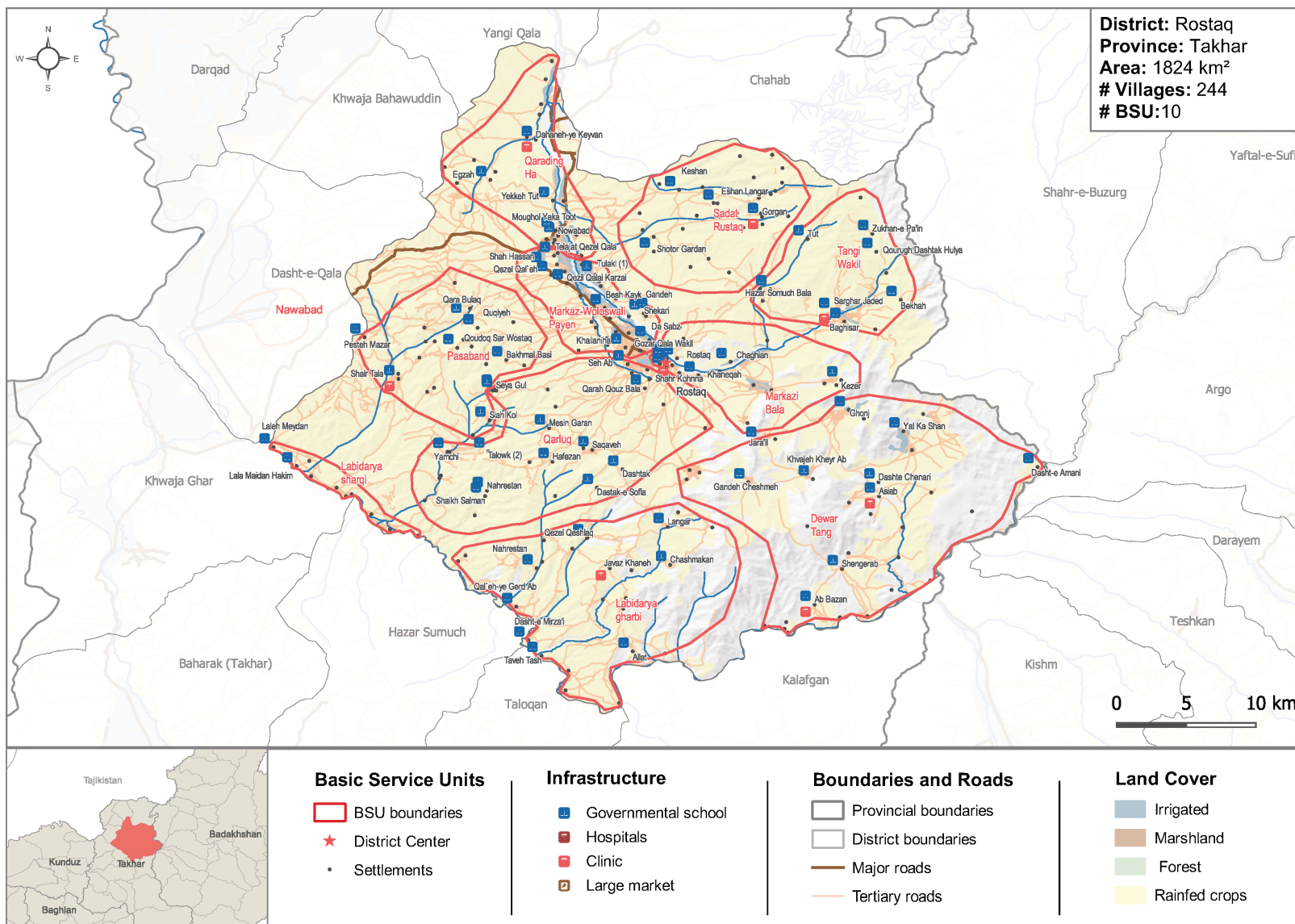
Data sources: Afghan Geodesy and Cartography Head Office (AGCHO): Administrative boundaries, Land cover, DEM and hydrography

REACH: Basic Service Units boundaries, settlements, health services, education facilities and markets. Open Street Map (OSM): Roads

Note: Data, designations and boundaries contained on this map are not warranted to be error-free and do not imply acceptance by the REACH partners, associated, donors mentioned on this map.

TAKHAR ROSTAQ DISTRICT

HTR | 2020
AFGHANISTAN

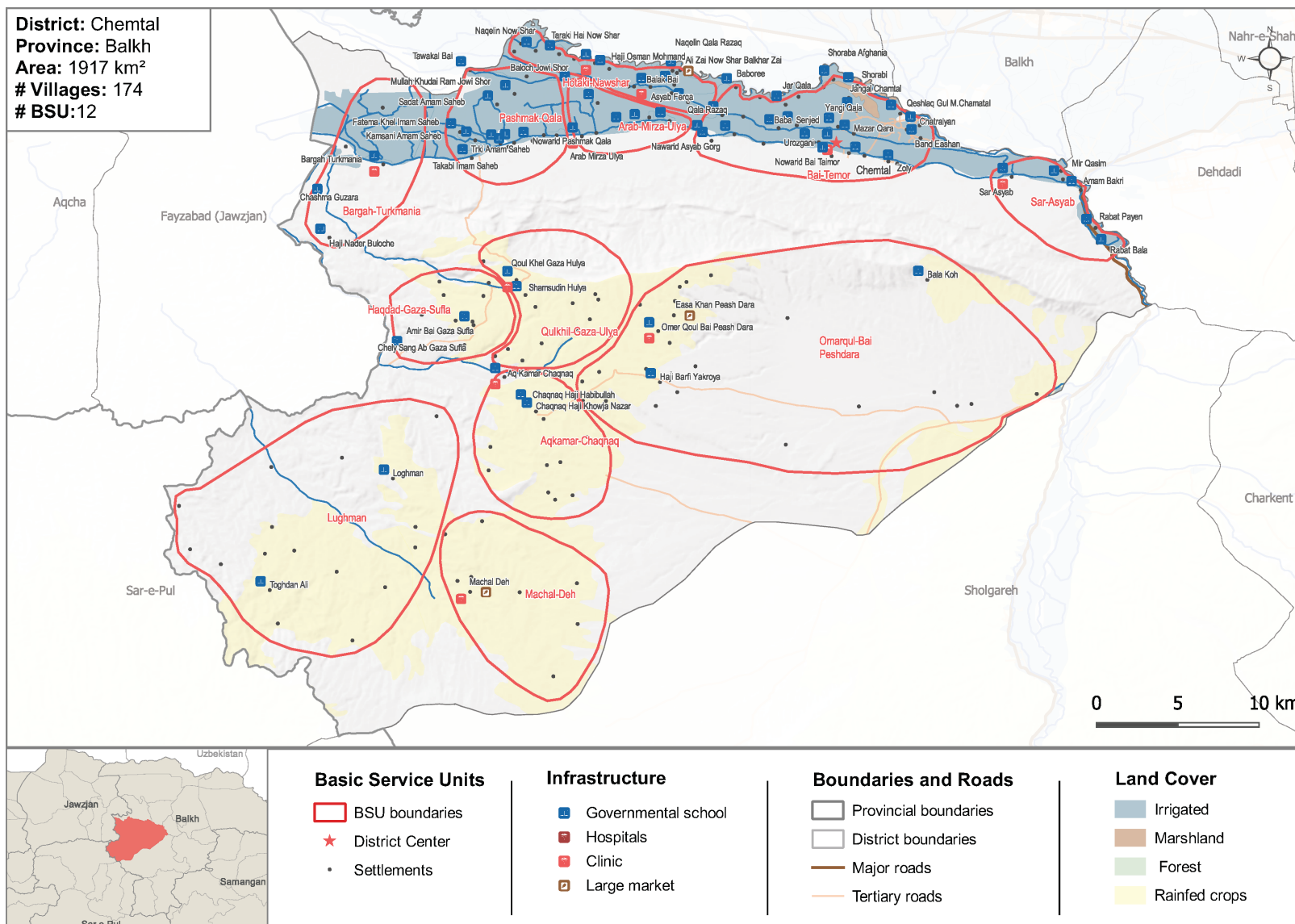


Projection: WGS84

Data sources: Afghan Geodesy and Cartography Head Office (AGCHO): Administrative boundaries, Land cover, DEM and hydrography

REACH: Basic Service Units boundaries, settlements, health services, education facilities and markets. Open Street Map (OSM): Roads

Note: Data, designations and boundaries contained on this map are not warranted to be error-free and do not imply acceptance by the REACH partners, associated, donors mentioned on this map.

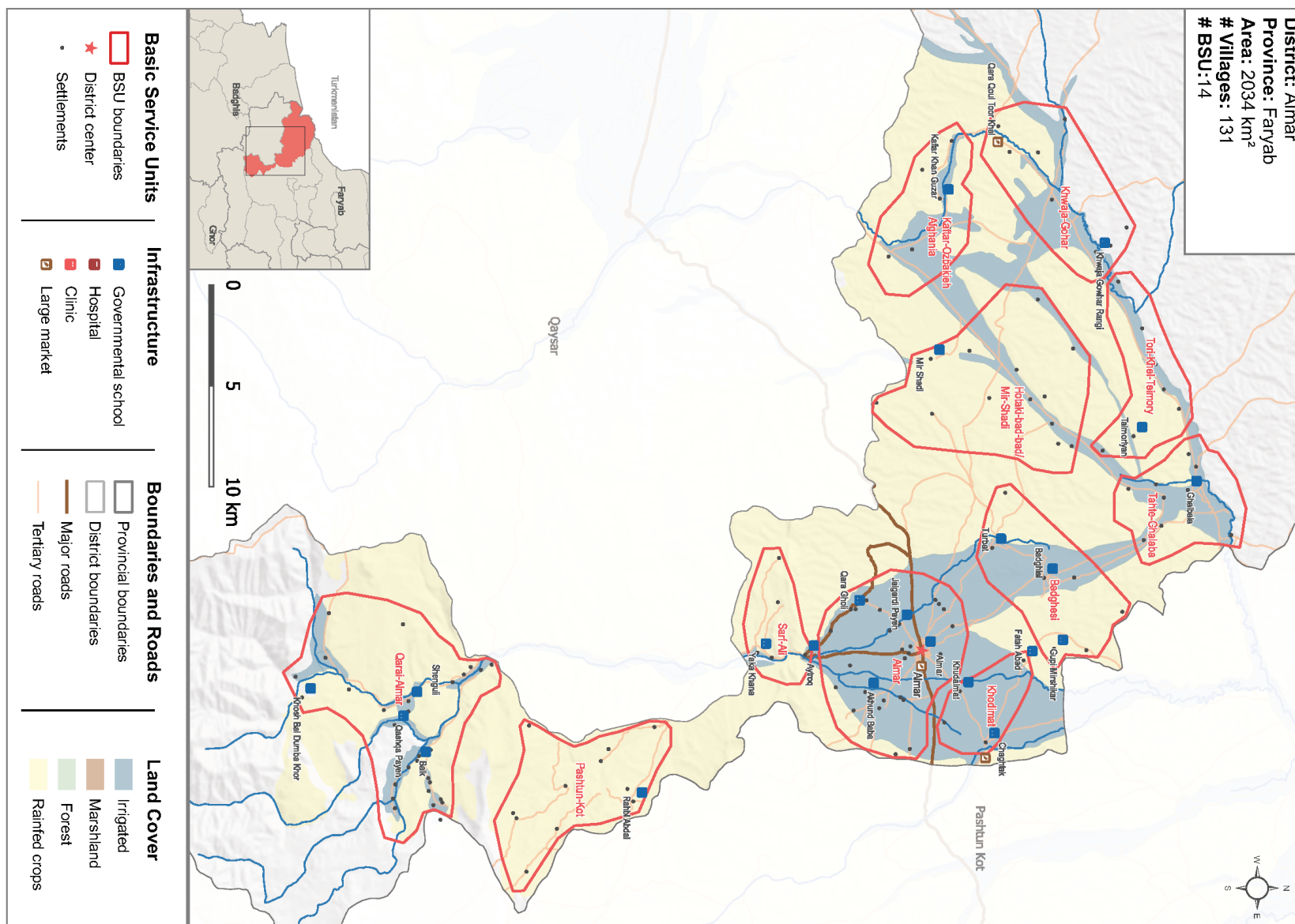


Projection: WGS84

Data sources: Afghan Geodesy and Cartography Head Office (AGCHO): Administrative boundaries, Land cover, DEM and hydrography

REACH: Basic Service Units boundaries, settlements, health services, education facilities and markets. Open Street Map (OSM): Roads

Note: Data, designations and boundaries contained on this map are not warranted to be error-free and do not imply acceptance by the REACH partners, associated, donors mentioned on this map.



Projection: WGS84

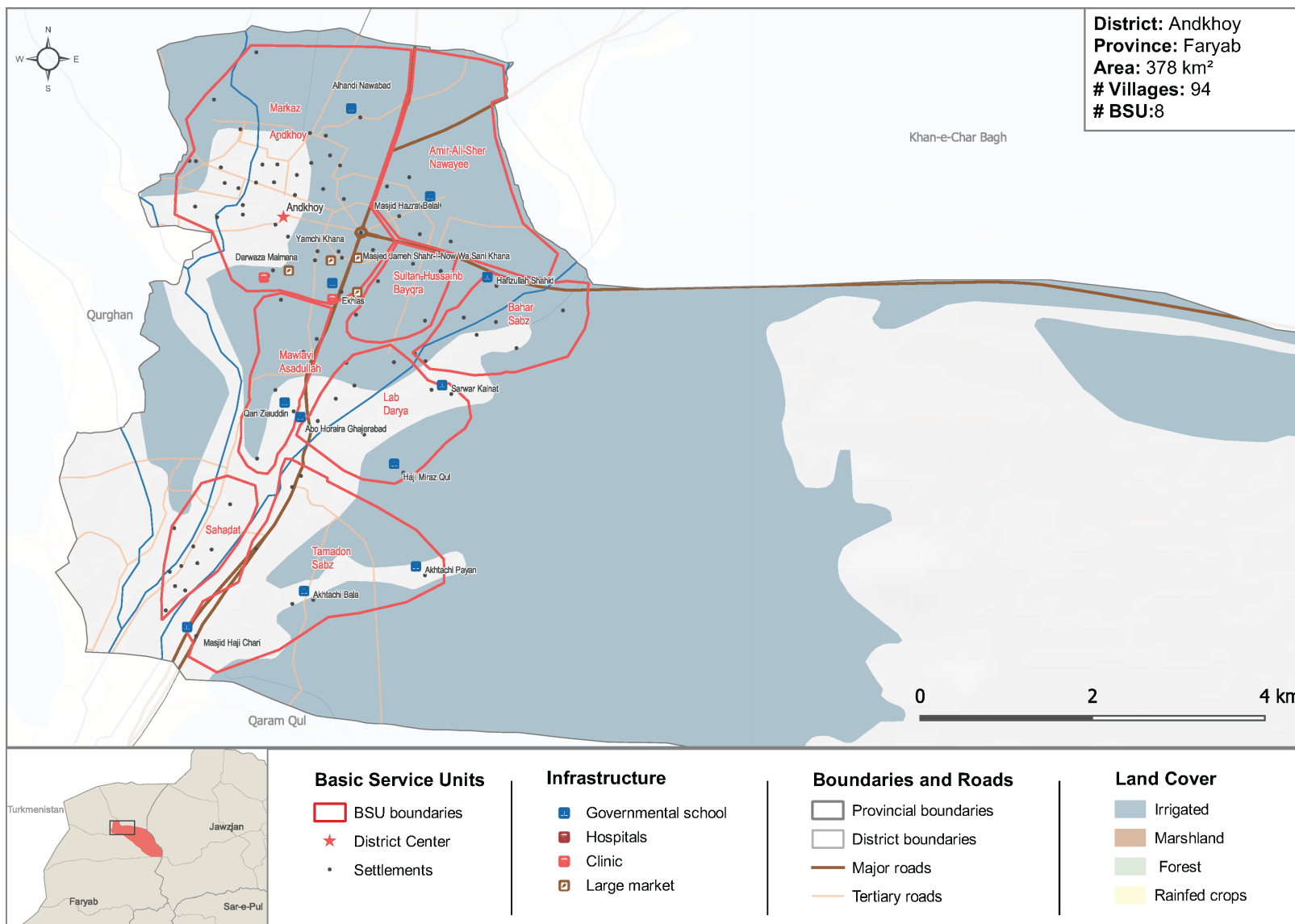
Data sources: Afghan Geodesy and Cartography Head Office (AGCHO): Administrative boundaries, Land cover, DEM and hydrography

REACH: Basic Service Units boundaries, settlements, health services, education facilities and markets. Open Street Map (OSM): Roads

Note: Data, designations and boundaries contained on this map are not warranted to be error-free and do not imply acceptance by the REACH partners, associated, donors mentioned on this map.

FARYAB ANDKHOY DISTRICT

HTR | 2020
AFGHANISTAN



Projection: WGS84

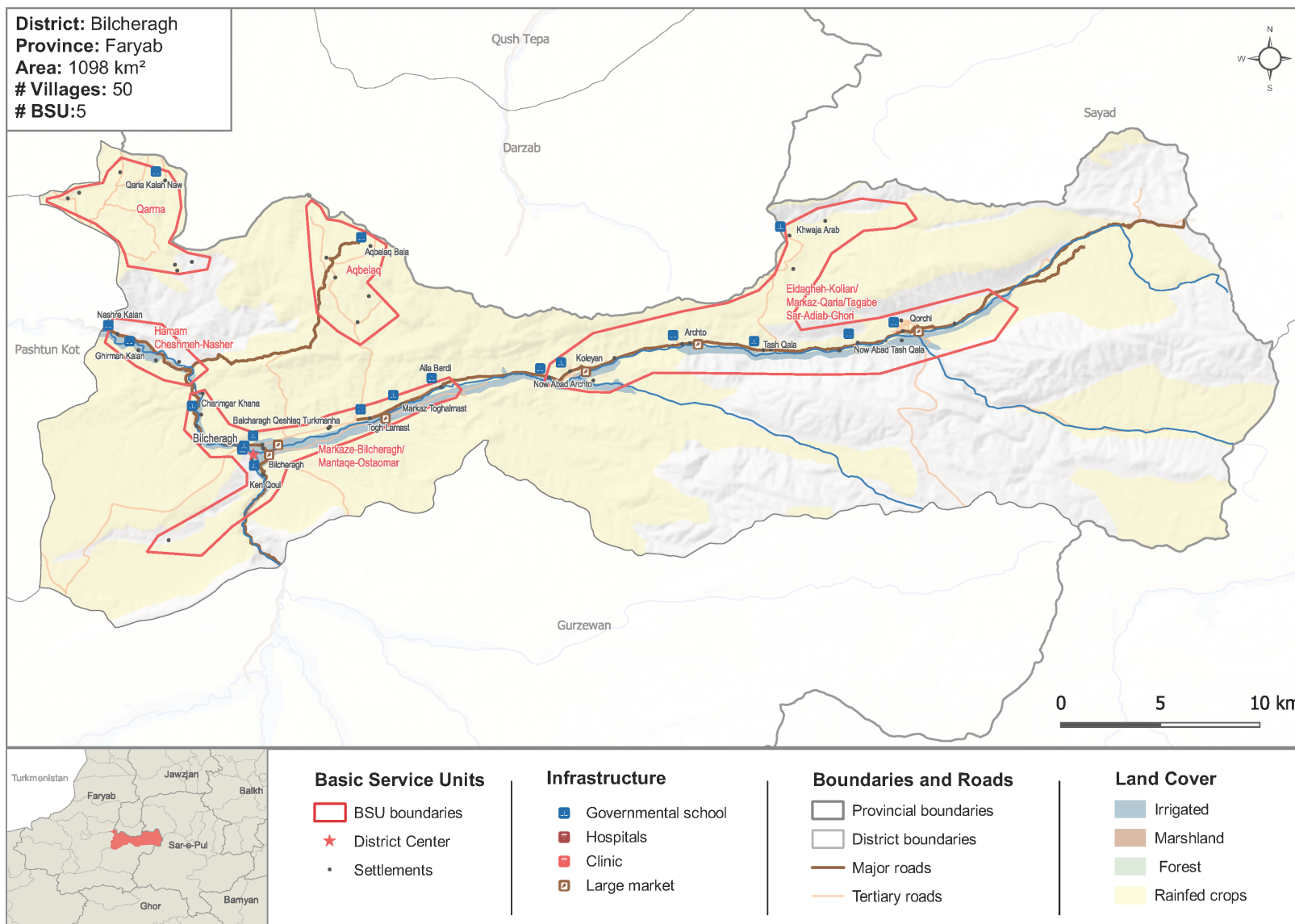
Data sources: Afghan Geodesy and Cartography Head Office (AGCHO): Administrative boundaries, Land cover, DEM and hydrography

REACH: Basic Service Units boundaries, settlements, health services, education facilities and markets. Open Street Map (OSM): Roads

Note: Data, designations and boundaries contained on this map are not warranted to be error-free and do not imply acceptance by the REACH partners, associated, donors mentioned on this map.

FARYAB BILCHERAGH DISTRICT

HTR | 2020
AFGHANISTAN



Projection: WGS84

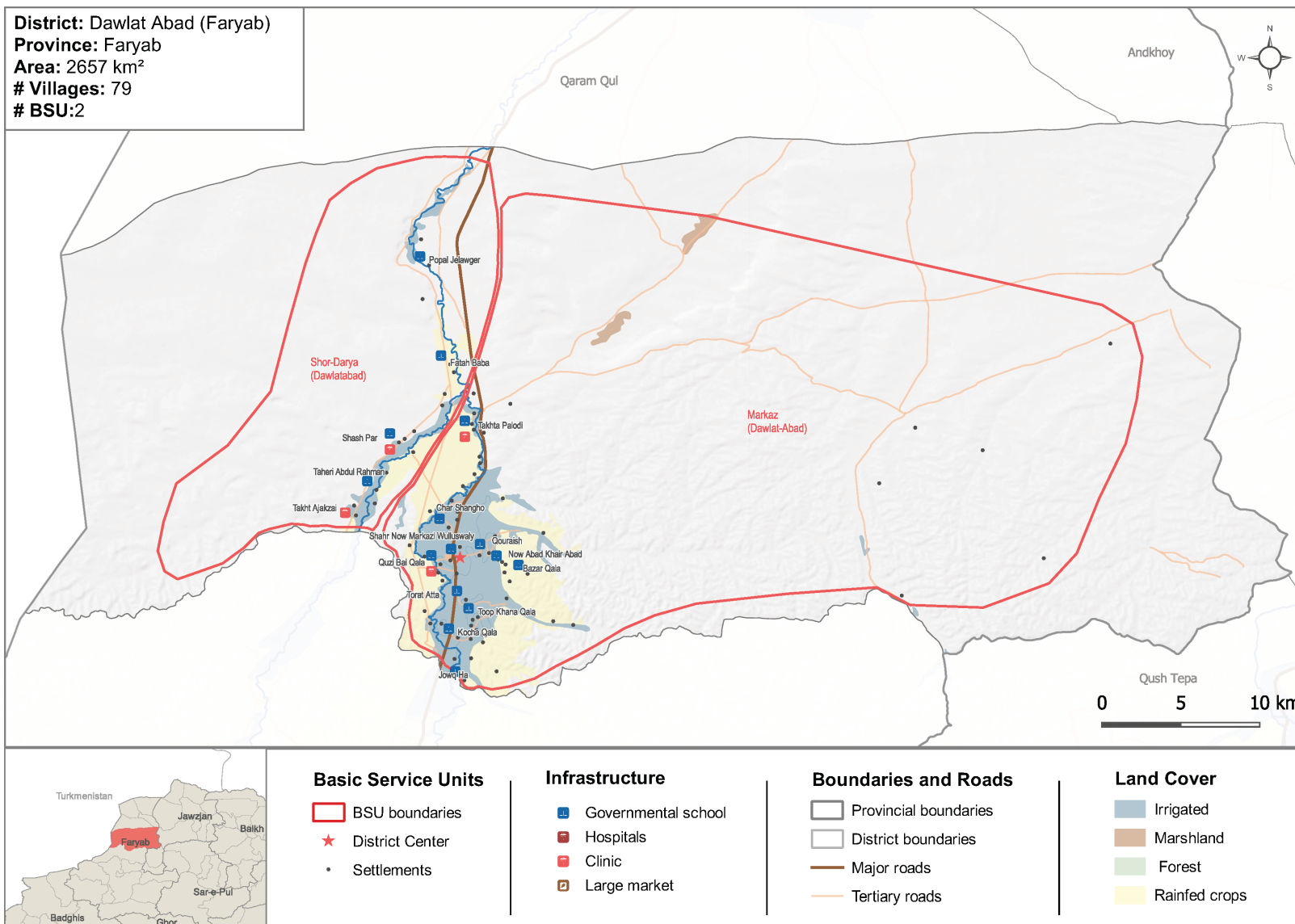
Data sources: Afghan Geodesy and Cartography Head Office (AGCHO): Administrative boundaries, Land cover, DEM and hydrography

REACH: Basic Service Units boundaries, settlements, health services, education facilities and markets. Open Street Map (OSM): Roads

Note: Data, designations and boundaries contained on this map are not warranted to be error-free and do not imply acceptance by the REACH partners, associated, donors mentioned on this map.

FARYAB DAWLAT ABAD DISTRICT

HTR | 2020
AFGHANISTAN



Projection: WGS84

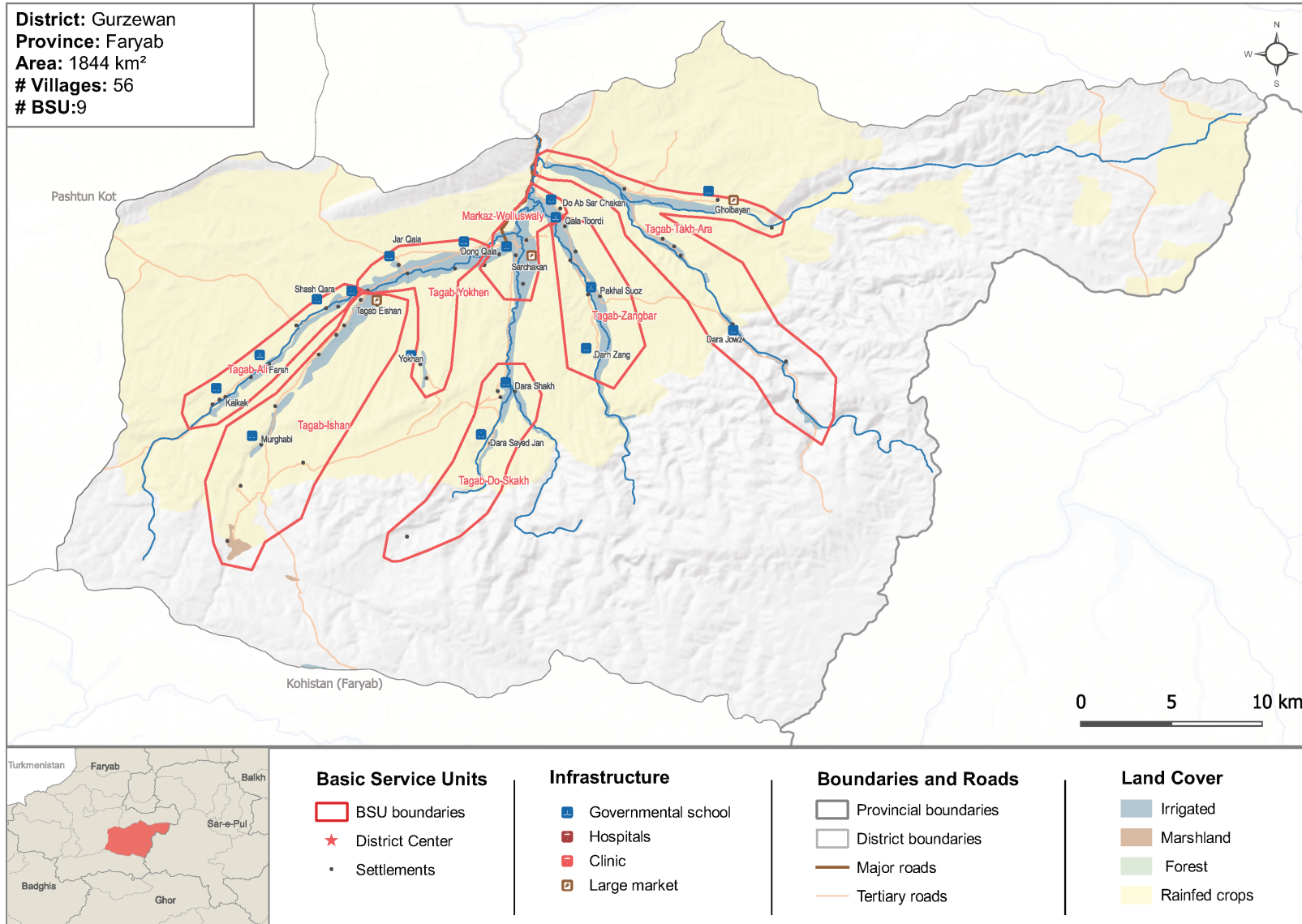
Data sources: Afghan Geodesy and Cartography Head Office (AGCHO): Administrative boundaries, Land cover, DEM and hydrography

REACH: Basic Service Units boundaries, settlements, health services, education facilities and markets. Open Street Map (OSM): Roads

Note: Data, designations and boundaries contained on this map are not warranted to be error-free and do not imply acceptance by the REACH partners, associated, donors mentioned on this map.

FARYAB GURZEWAN DISTRICT

HTR | 2020
AFGHANISTAN



Projection: WGS84

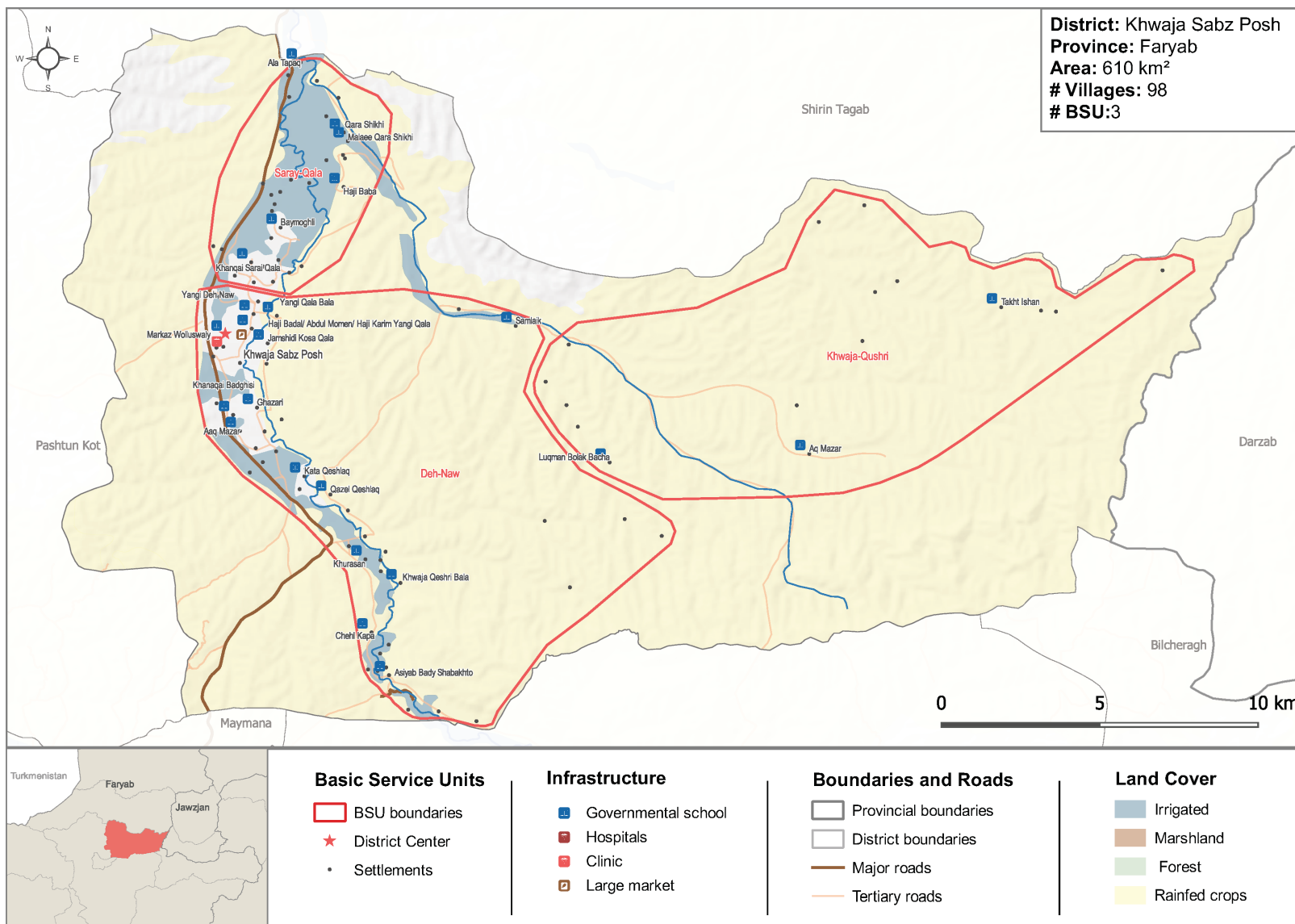
Data sources: Afghan Geodesy and Cartography Head Office (AGCHO): Administrative boundaries, Land cover, DEM and hydrography

REACH: Basic Service Units boundaries, settlements, health services, education facilities and markets. Open Street Map (OSM): Roads

Note: Data, designations and boundaries contained on this map are not warranted to be error-free and do not imply acceptance by the REACH partners, associated, donors mentioned on this map.

FARYAB KHWAJA SABZ POSH DISTRICT

HTR | 2020
AFGHANISTAN



Projection: WGS84

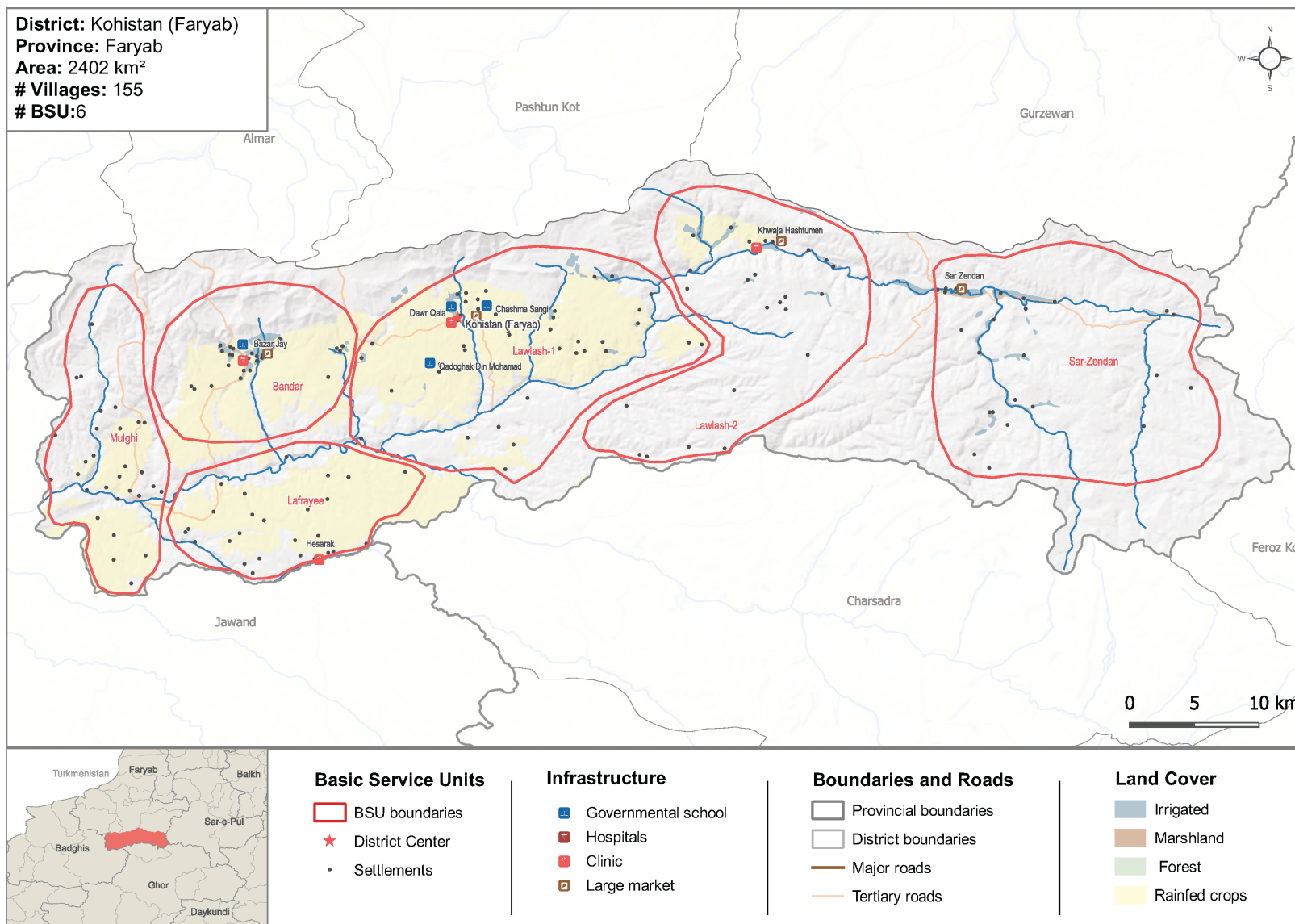
Data sources: Afghan Geodesy and Cartography Head Office (AGCHO): Administrative boundaries, Land cover, DEM and hydrography

REACH: Basic Service Units boundaries, settlements, health services, education facilities and markets. Open Street Map (OSM): Roads

Note: Data, designations and boundaries contained on this map are not warranted to be error-free and do not imply acceptance by the REACH partners, associated, donors mentioned on this map.

FARYAB KOHISTAN DISTRICT

HTR | 2020
AFGHANISTAN



Projection: WGS84

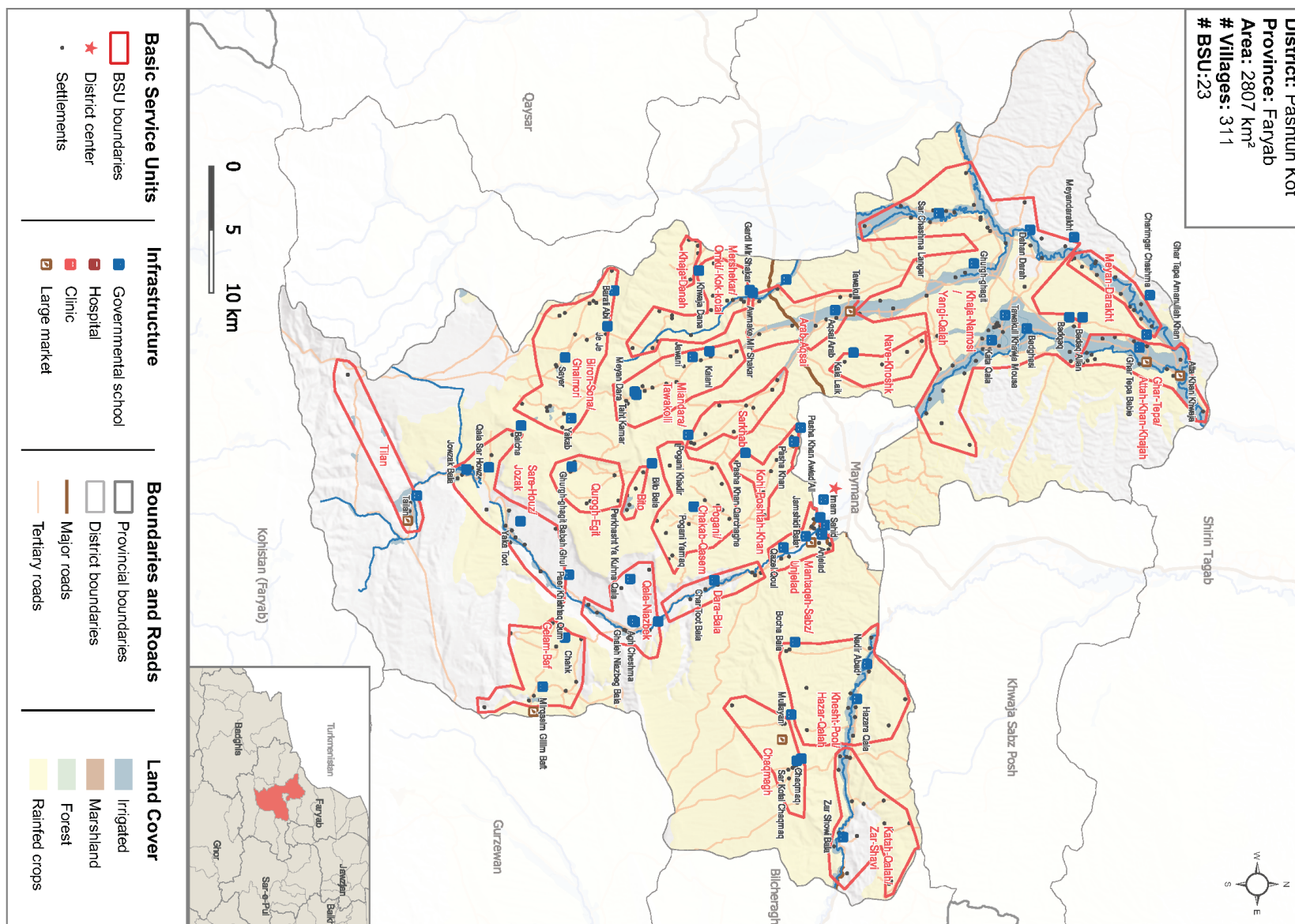
Data sources: Afghan Geodesy and Cartography Head Office (AGCHO): Administrative boundaries, Land cover, DEM and hydrography

REACH: Basic Service Units boundaries, settlements, health services, education facilities and markets. Open Street Map (OSM): Roads

Note: Data, designations and boundaries contained on this map are not warranted to be error-free and do not imply acceptance by the REACH partners, associated, donors mentioned on this map.

FARYAB PASHTUN KOT DISTRICT

HTR | 2020
AFGHANISTAN



Projection: WGS84

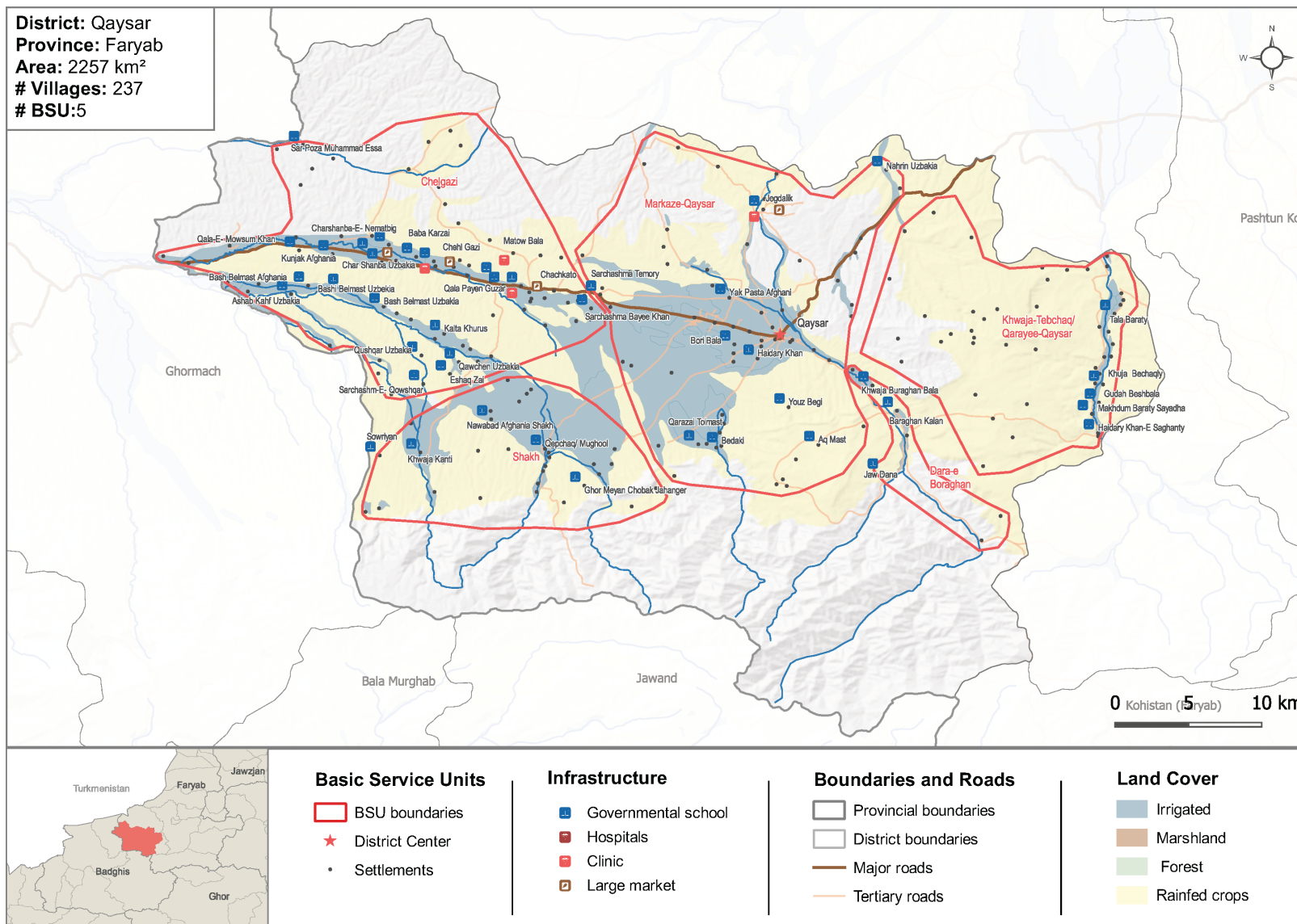
Data sources: Afghan Geodesy and Cartography Head Office (AGCHO): Administrative boundaries, Land cover, DEM and hydrography

REACH: Basic Service Units boundaries, settlements, health services, education facilities and markets. Open Street Map (OSM): Roads

Note: Data, designations and boundaries contained on this map are not warranted to be error-free and do not imply acceptance by the REACH partners, associated, donors mentioned on this map.

FARYAB QAYSAR DISTRICT

HTR | 2020
AFGHANISTAN



Projection: WGS84

Data sources: Afghan Geodesy and Cartography Head Office (AGCHO): Administrative boundaries, Land cover, DEM and hydrography

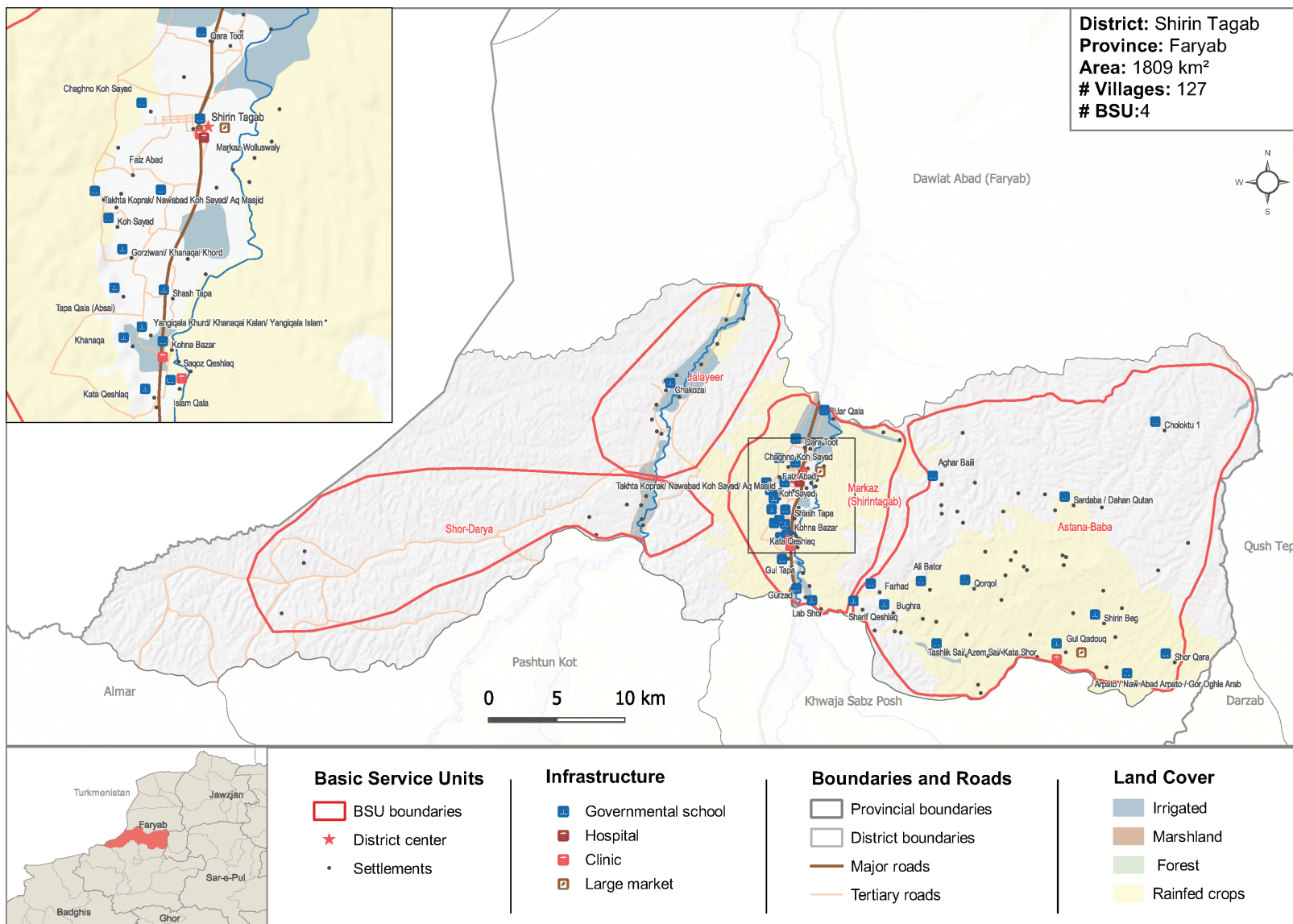
REACH: Basic Service Units boundaries, settlements, health services, education facilities and markets. Open Street Map (OSM): Roads

Note: Data, designations and boundaries contained on this map are not warranted to be error-free and do not imply acceptance by the REACH partners, associated, donors mentioned on this map.

FARYAB

SHIRIN TAGAB DISTRICT

HTR | 2020
AFGHANISTAN



Projection: WGS84

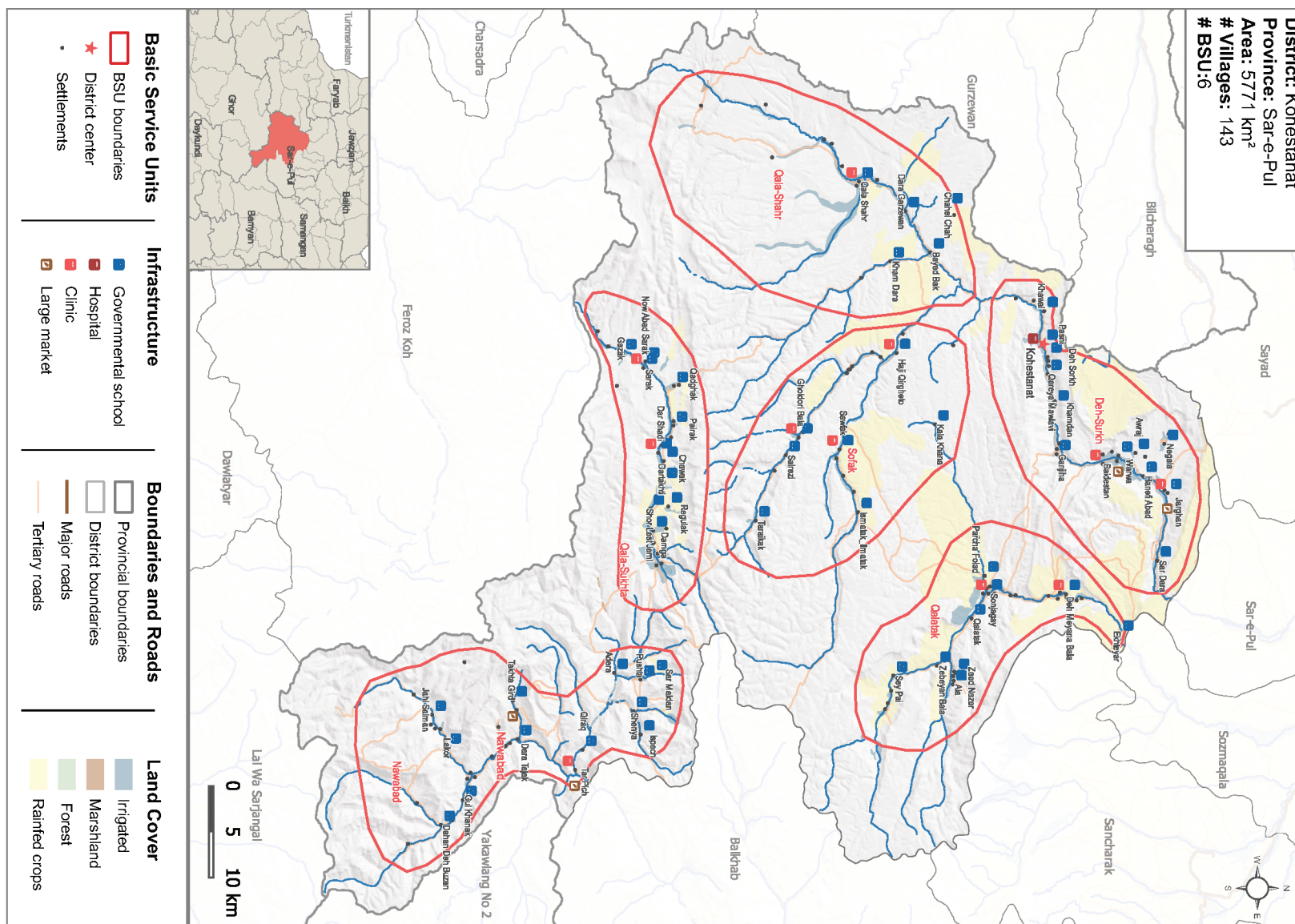
Data sources: Afghan Geodesy and Cartography Head Office (AGCHO): Administrative boundaries, Land cover, DEM and hydrography

REACH: Basic Service Units boundaries, settlements, health services, education facilities and markets. Open Street Map (OSM): Roads

Note: Data, designations and boundaries contained on this map are not warranted to be error-free and do not imply acceptance by the REACH partners, associated, donors mentioned on this map.

SAR-E-PUL KOHESTANAT DISTRICT

HTR | 2020
AFGHANISTAN



Projection: WGS84

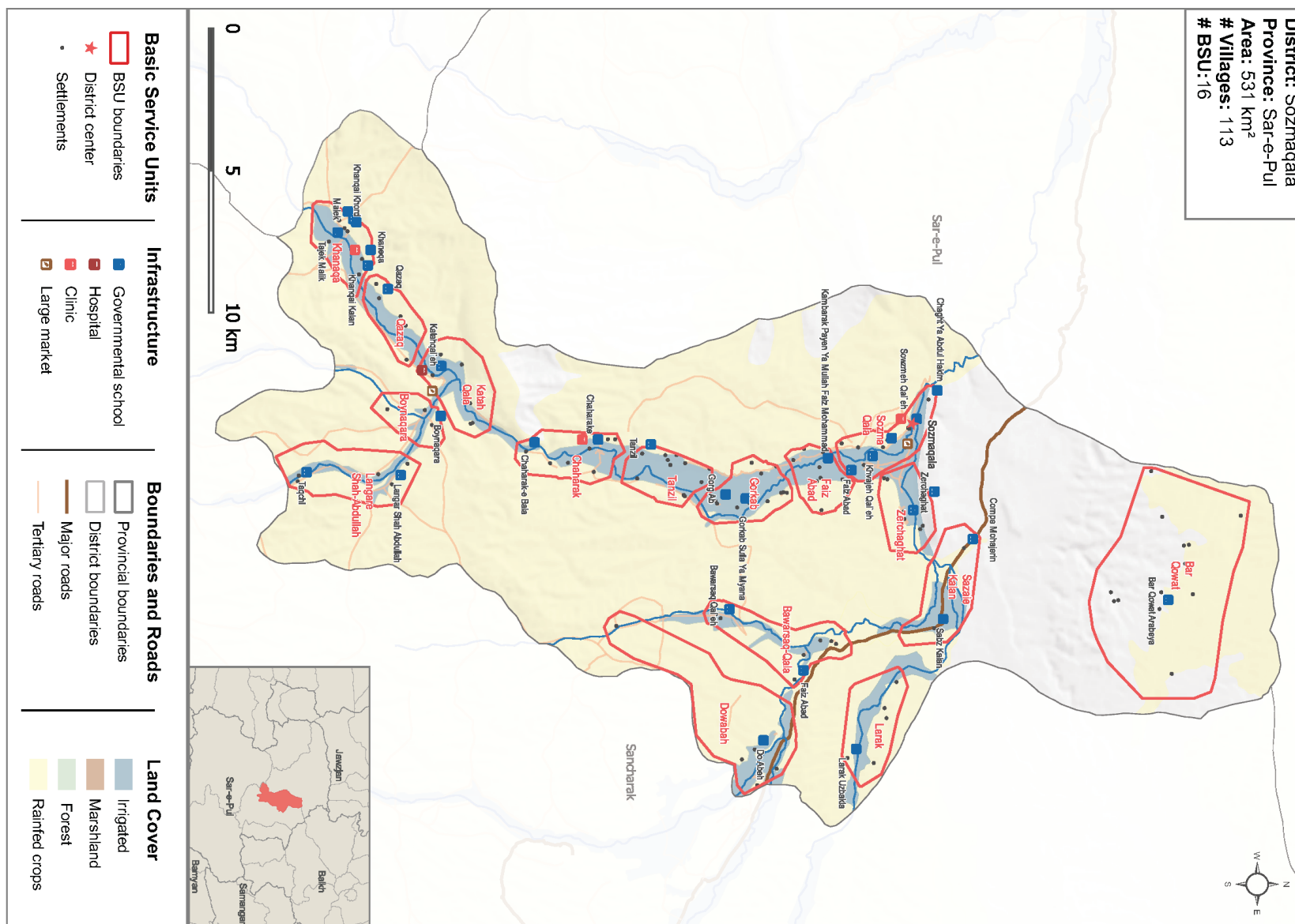
Data sources: Afghan Geodesy and Cartography Head Office (AGCHO): Administrative boundaries, Land cover, DEM and hydrography

REACH: Basic Service Units boundaries, settlements, health services, education facilities and markets. Open Street Map (OSM): Roads

Note: Data, designations and boundaries contained on this map are not warranted to be error-free and do not imply acceptance by the REACH partners, associated, donors mentioned on this map.

SAR-E-PUL SOZMAQALA DISTRICT

HTR | 2020
AFGHANISTAN



Projection: WGS84

Data sources: Afghan Geodesy and Cartography Head Office (AGCHO): Administrative boundaries, Land cover, DEM and hydrography

REACH: Basic Service Units boundaries, settlements, health services, education facilities and markets. Open Street Map (OSM): Roads

Note: Data, designations and boundaries contained on this map are not warranted to be error-free and do not imply acceptance by the REACH partners, associated, donors mentioned on this map.