

SYRIA MARKET MONITORING EXERCISE

Snapshot: 6 - 16 January 2020

Cash-Based Responses
Technical Working Group

REACH Informing
more effective
humanitarian action

INTRODUCTION

To inform humanitarian cash programming, REACH, in partnership with the Cash-Based Responses Technical Working Group (CBR-TWG), conducts monthly Market Monitoring Exercises in northern Syria to assess the availability and prices of 36 basic commodities that are typically sold in markets and consumed by average Syrian households, including food and non-food items, water, fuel, and cellphone data.

Of these, 18 items comprise the Survival Minimum Expenditure Basket (SMEB; see below), which represents the minimum, culturally adjusted items required to support a 6-person household for a month.

Data was collected this month (between 6-16 January 2020) by ACTED, CARE Shafak, GOAL, People In Need (PIN), REACH, SARD, Solidarités International (SI), STC Shafak, Violet, and Watan.

The accompanying [data from the month of January](#) is disseminated monthly and is distributed through partners across the humanitarian community.

SURVIVAL MINIMUM EXPENDITURE BASKET (SMEB) CONTENTS

	Item	Quantity	
Food Items	Bread	37 kg	
	Bulgur	15 kg	
	Chicken	6 kg	
	Eggs	6 kg	
	Fresh vegetables	12 kg	
	Ghee/vegetable oil	7 kg/L	
	Red lentils	15 kg	
	Rice	19 kg	
	Salt	1 kg	
	Sugar	5 kg	
	Tomato paste	6 kg	
	Hygiene items	Bathing soap	12 bars
		Laundry/dish soap	3 kg
Sanitary pads		4 packs of 10	
Toothpaste		200 g	
Fuel	Cooking fuel*	25 L	
Water	Water trucking	4500 L	
Telecom	Smartphone data	1 GB	
Other	Float (other costs)**	7.5% total value	

* Kerosene in northern Syria

** Float only applied to observations where prices of all SMEB contents could be collected

KEY DEVELOPMENTS

January 2020's coverage

This month, REACH and partners covered 41 sub-districts in the northwest for the Market Monitoring Exercise. In total, approximately 2,860 individual shops were covered in this month's Market Monitoring.

Highest northwest SMEB cost recorded under Market Monitoring Exercise

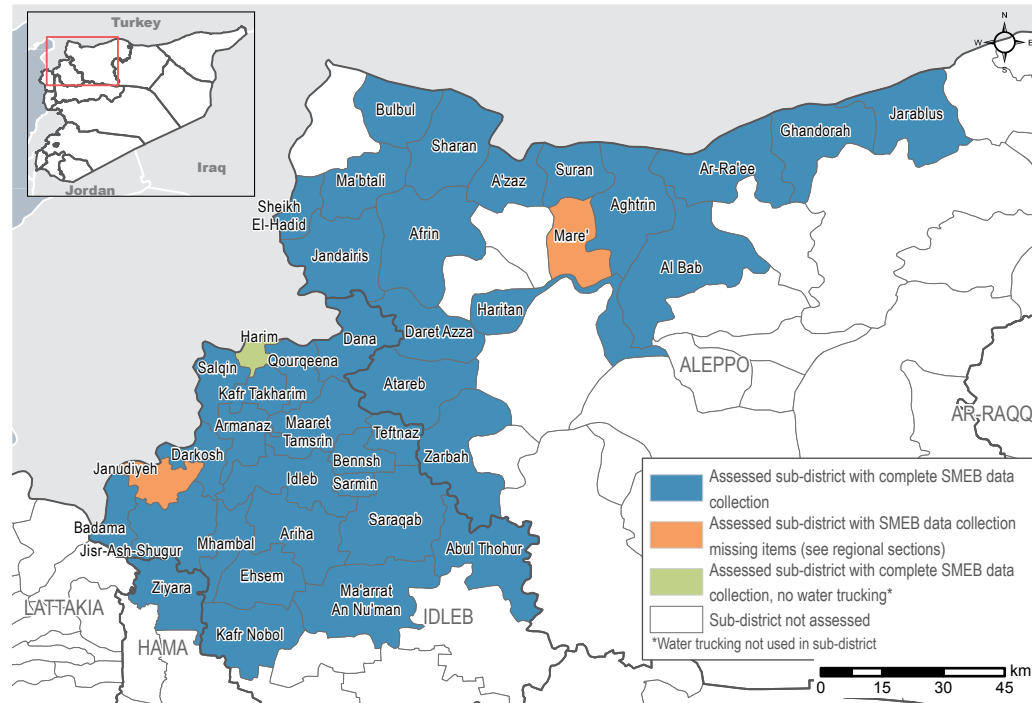
This month, the SMEB cost increased by 18% from 90,380 Syrian Pound (SYP) in December 2019 to 106,563 SYP in January 2020, resetting the highest price recorded by the Market Monitoring Exercise the third time in a row since November 2019. Yet, the SMEB cost in United States Dollar (USD) showed a small decrease of 3% from 107 USD to 104 USD. The continuous rise in the SMEB cost in SYP could be attributed to the ongoing depreciation of the SYP against the USD,

coupled with increasing prices on water trucking, non-food items (NFI) (particularly dishwashing soap) and fresh vegetables.

Informal USD/SYP exchange rate sharply increased to over 1:1000

At the time of data collection in January 2020, the informal USD/SYP exchange rate continued to show an upward trend across the region, with the highest rate recorded at 1,070 SYP in Jandairis sub-district in Aleppo governorate. Ultimately, the median recorded informal USD/SYP exchange rate increased by 22% in the northwest from 843 SYP to 1,024 SYP against 1 USD this month, surpassing the 1 USD to 1,000 SYP threshold. The continuous economic sanctions imposed on Syria as well as the economic turmoil in neighbouring Lebanon are reported as the main drivers spurring the plummet of the SYP's strength.

ASSESSED AREAS AND COVERAGE



Significant increases in vegetable prices

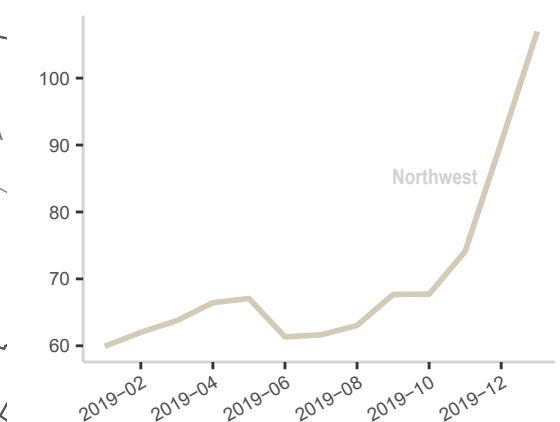
Vegetable items, specifically tomatoes and onions, were recorded at much higher prices across northwest Syria this month. The regional median value of the SMEB vegetable component recorded a 42% increase from 3,330 SYP to 4,725 SYP this month. The significant increase in vegetable prices were reportedly due to the noticeable rise in exchange rate of SYP against the USD, increased dependency on imported vegetables that incur high transportation costs (driven by high fuel prices) as well as the end of the agricultural season.

MEDIAN SMEB COST IN SYP (USD), BY REGION

106,563 SYP (104 USD) | NORTHWEST SYRIA - NORTHERN HAMA, IDLEB, WESTERN & NORTHERN ALEPPO GOVERNORATES

MEDIAN SMEB COSTS, BY MONTH & REGION

Thousand Syrian Pounds



KEY DEVELOPMENTS

106,563 SYP
(104 USD)

NORTHWEST SYRIA - NORTHERN HAMA, IDLEB, WESTERN & NORTHERN ALEPPO GOVERNORATES

Tomatoes prices skyrocketed across northwest Syria

All assessed sub-districts in northwest Syria this month witnessed a sharp increase in median tomato prices per kilo. Among the 41 sub-districts assessed this month, 20 sub-districts recorded an increase of 60% or more in median prices of tomatoes per kilo when compared with that of the previous month. Particularly, the median prices in 4 sub-districts – namely Bulbul, Sheikh El-Hadid, Mare' and Harim – reportedly increased by more than twofold, with Harim recording the highest increase of 142% from 300 SYP per kilo in December 2019 to 725 SYP per kilo in January 2020. For the reasons behind, please refer back to the paragraph on “significant increases in vegetable prices” in the previous page.

Substantial increase in the cost of winter blankets

In the January 2020 Market Monitoring Exercise, a substantial upward trend was observed across median prices of specific winterisation items monitored, including adult and children winter hats, winter blankets as well as mattresses in northwest Syria. Noticeably, the median price of winter blankets recorded an increase

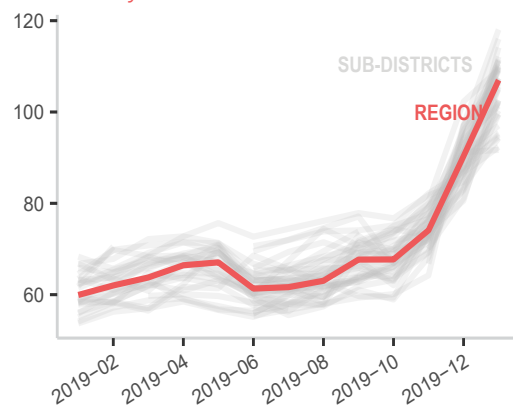
of over 60% in 7 sub-districts across the region, with Mare' sub-district in Aleppo governorate reporting the highest increase of 220%, from 1,000 SYP in December 2019 to 3,200 SYP in January 2020. These increases were reportedly also caused by the remarkable rise in exchange rate of SYP against the USD.

Rising NFI prices

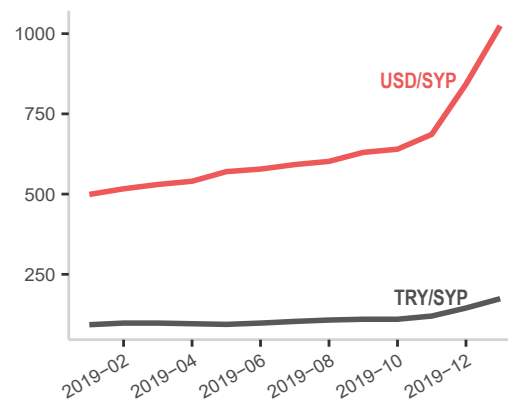
The median value of the NFI SMEB component in northwest Syria increased by 20% overall, reaching 5,813 SYP in January 2020 compared with last month's figure at 4,834 SYP. Of note, the regional median price of dishwashing soap likewise witnessed an increase of 41% from 284 SYP to 400 SYP this month. In 5 assessed sub-districts – Afrin, Jandairis, Mare', Ma'arrat An Nu'man and Mhambal – the median price of dishwashing soap recorded an increase of over 100%. Ma'arrat An Nu'man sub-district in Idlib governorate reported the highest increase of 175%, from 200 SYP in December 2019 to 550 SYP in January 2020 due to the increasing exchange rate, increased reliance on costly imports and the increase in demand as a result of IDP movement.

MEDIAN SMEB COSTS, BY MONTH

Thousand Syrian Pounds



EXCHANGE RATES, BY MONTH & CURRENCY



MEDIAN SMEB COSTS & CHANGES*

Syrian Pounds

Sub-district	SMEB	One month change	Six month change
Northwest Syria	106,563	18%	69%
Abul Thohur	107,522	11%	75%
Afrin	92,337	6%	NA
Agthrin	98,602	11%	NA
Al Bab	102,561	26%	NA
Ariha	112,999	20%	78%
Armanaz	112,761	20%	NA
Ar-Ra'ee	100,324	16%	NA
Atareb	111,291	26%	68%
A'zaz	109,315	7%	47%
Badama	110,479	22%	NA
Bennsh	99,465	20%	57%
Bulbul	110,053	13%	NA
Dana	109,771	17%	77%
Daret Azza	107,074	12%	66%
Darkosh	112,946	21%	84%
Ehsem	95,599	8%	51%
Ghandorah	94,296	13%	NA
Harim**	110,728	21%	NA
Haritan	105,522	31%	71%

Sub-district	SMEB	One month change	Six month change
Idlib	105,216	26%	47%
Jandairis	104,221	15%	NA
Janudiyeh	NA	NA	NA
Jarablus	102,009	10%	NA
Jisr-Ash-Shugur	99,972	16%	64%
Kafr Nobol	95,196	4%	57%
Kafr Takharim	111,311	22%	64%
Maaret Tamsrin	106,053	14%	76%
Ma'arrat An Nu'man	109,902	21%	85%
Ma'btali	102,313	19%	NA
Mare'	NA	NA	NA
Mhambal	102,085	17%	38%
Qourqeena	107,329	27%	70%
Salqin	108,672	15%	60%
Saraqab	99,032	7%	51%
Sarmin	109,727	25%	65%
Sharan	95,040	9%	NA
Sheikh El-Hadid	114,126	35%	NA
Suran	107,829	19%	75%
Teftnaz	92,231	2%	59%
Zarbah	118,057	21%	106%
Ziyara	112,143	NA	94%

* For price and change calculations, only the communities within a sub-district with consistent coverage across months are included.

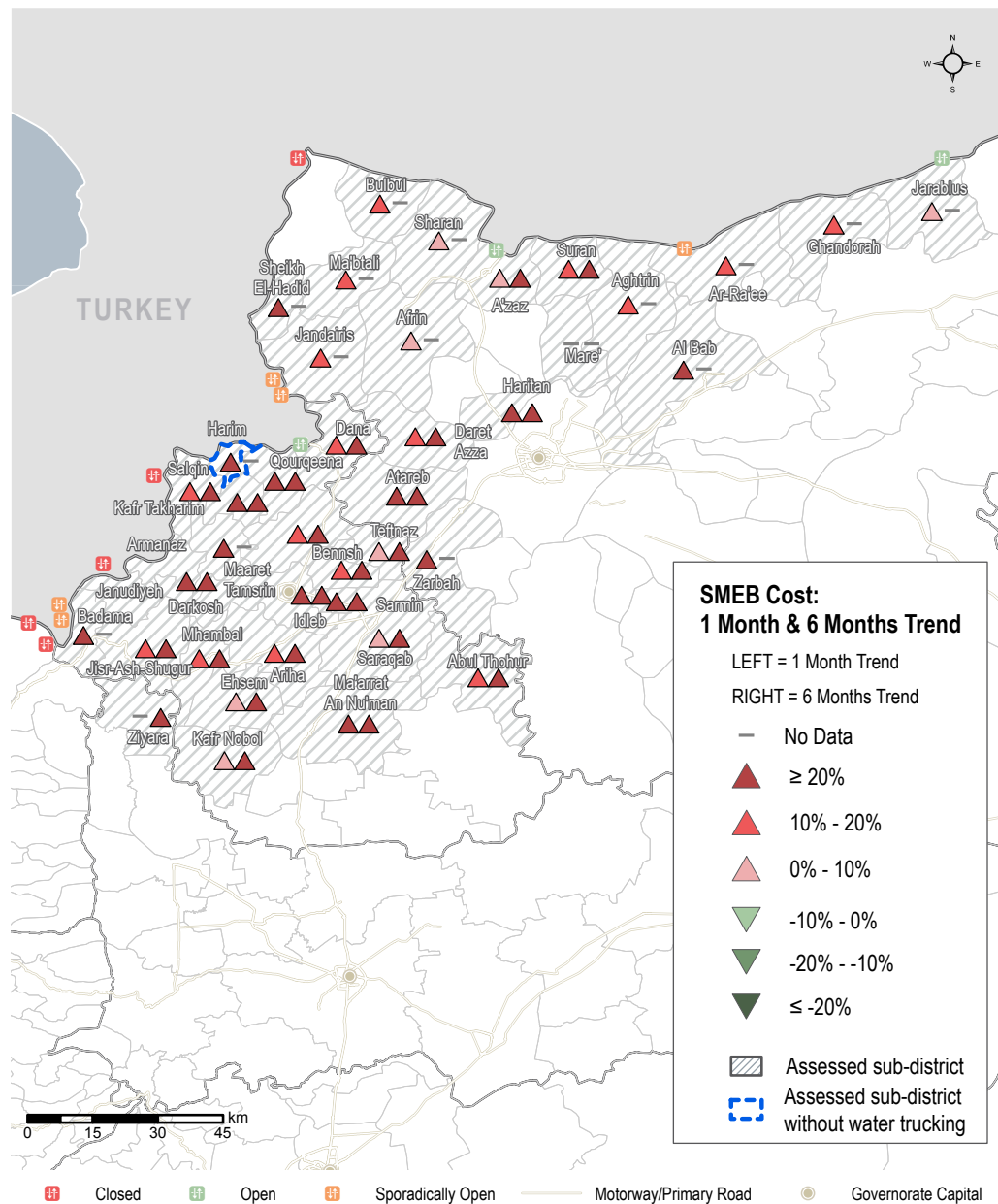
** SMEB calculated without water trucking component.

SUB-DISTRICTS WITH INCOMPLETE SMEB IN JANUARY

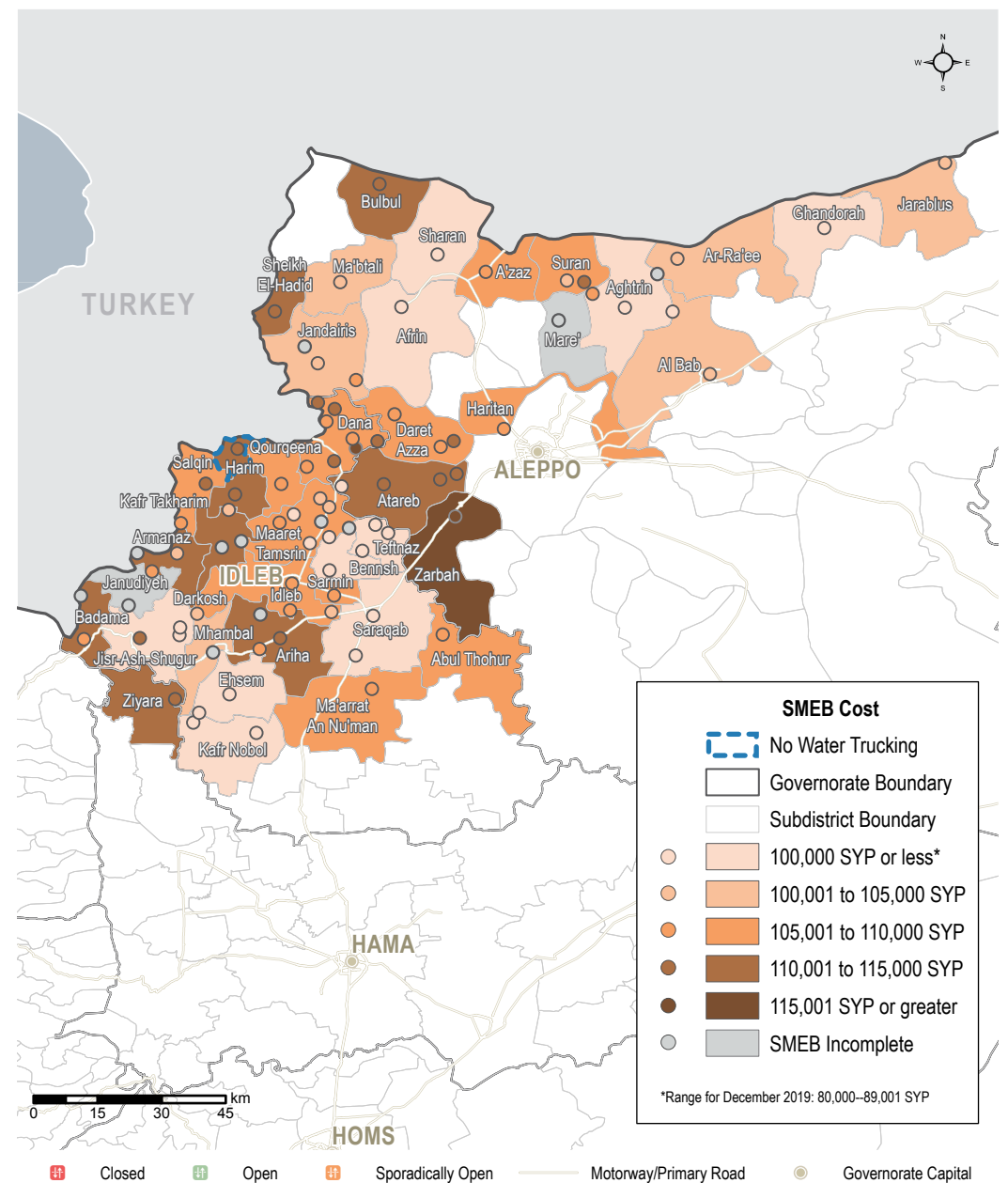
SUB-DISTRICT	MISSING ITEMS
Janudiyeh	Cucumber, toothpaste, liquefied petroleum gas (LP gas)
Mare'	Toothpaste, cooking fuel

Note: Lack of data for a SMEB item does not necessarily imply a shortage.

SMEB COST: ONE MONTH & SIX MONTHS TREND



SMEB COST RANGES (SYP), BY SUB-DISTRICTS & COMMUNITIES



NORTHWEST SYRIA - SMEB COST: FOOD ITEMS

Northern Hama, Idleb, Western & Northern Aleppo governorates

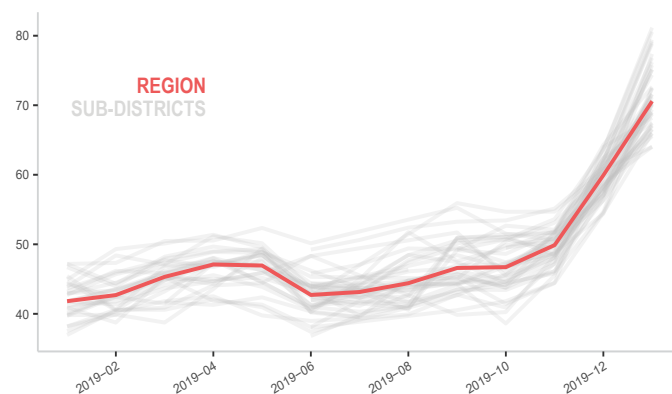
MEDIAN SMEB COST: FOOD ITEMS

See Page 1, Syrian Pounds

Sub-district	SMEB Food	One month change	Six month change	Sub-district	SMEB Food	One month change	Six month change
Northwest Syria	70,475	18%	59%	Idleb	71,275	30%	47%
Abul Thohur	68,175	7%	54%	Jandairis	75,400	26%	NA
Afrin	64,013	5%	NA	Janudiyeh	67,405	17%	45%
Aghtrin	66,225	16%	NA	Jarablus	67,523	8%	NA
Al Bab	70,173	29%	NA	Jisr-Ash-Shugur	64,338	18%	53%
Ariha	76,150	24%	65%	Kafr Nobol	67,091	13%	57%
Armanaz	73,426	19%	NA	Kafr Takharim	79,423	27%	68%
Ar-Ra'ee	70,475	15%	NA	Maaret Tamsrin	66,524	10%	57%
Atareb	80,559	27%	67%	Ma'arrat An Nu'man	70,254	20%	69%
A'zaz	72,650	13%	40%	Ma'b'tali	70,575	24%	NA
Badama	69,003	18%	NA	Mare'	76,200	26%	NA
Bennsh	70,055	21%	57%	Mhambal	70,171	13%	34%
Bulbul	68,968	12%	NA	Qourqeena	70,730	25%	58%
Dana	70,155	15%	60%	Salqin	77,536	26%	59%
Daret Azza	74,825	24%	73%	Saraqab	67,254	14%	50%
Darkosh	72,916	25%	64%	Sarmin	80,555	27%	66%
Ehsem	67,165	17%	59%	Sharan	65,975	21%	NA
Ghandorah	65,948	10%	NA	Sheikh El-Hadid	77,379	35%	NA
Harim	74,363	19%	NA	Suran	71,706	24%	72%
Haritan	75,755	32%	73%	Teftnaz	64,659	11%	58%
				Zarbah	79,150	28%	92%
				Ziyara	71,600	NA	79%

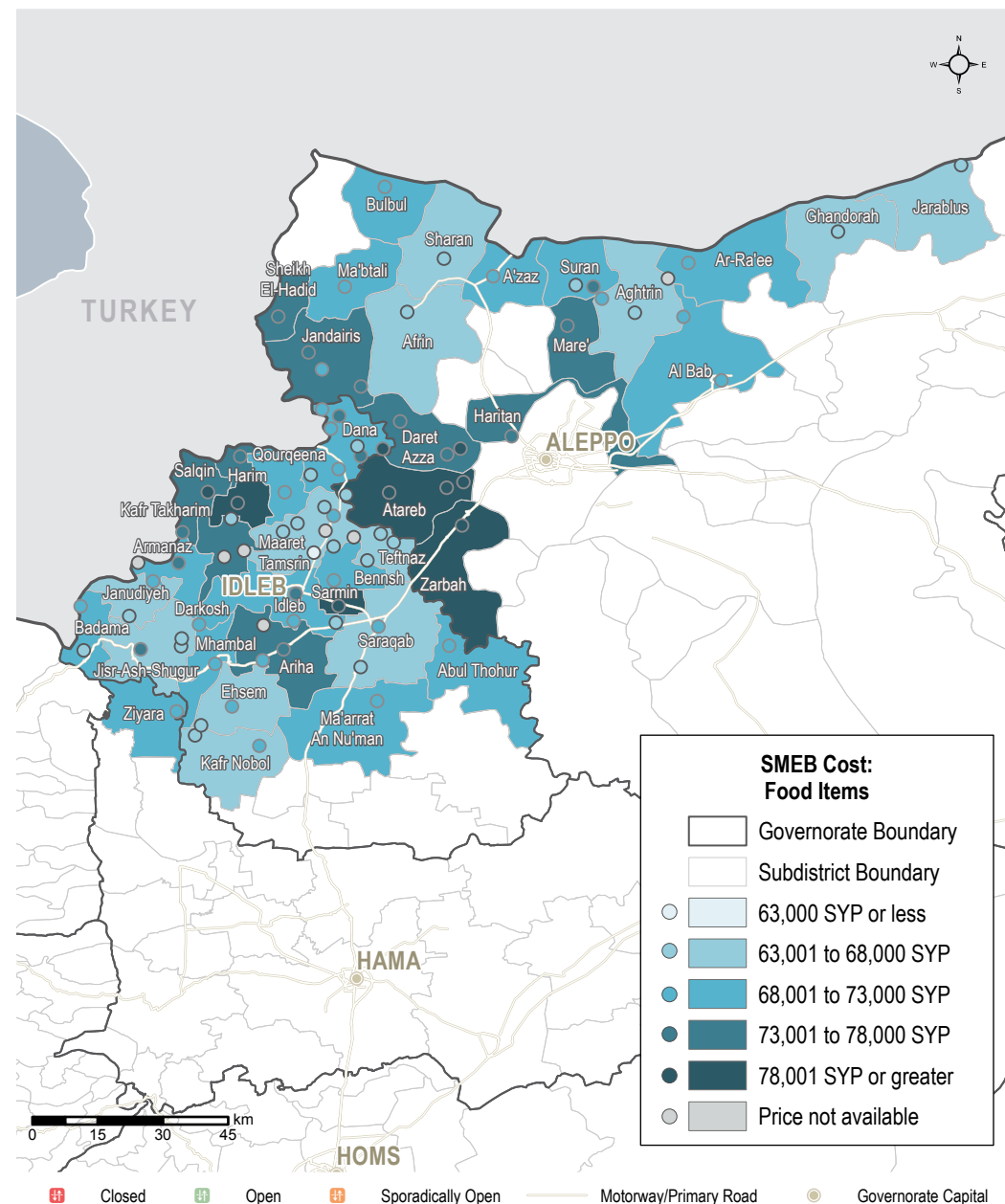
MEDIAN SMEB COST: FOOD ITEMS, BY MONTH

Region (red) and Sub-districts (grey), Thousand Syrian Pounds



SMEB FOOD ITEMS' COST

Sub-districts & Communities, Syrian Pounds



NORTHWEST SYRIA - SMEB COOKING FUEL

Northern Hama, Idleb, Western & Northern Aleppo governorates

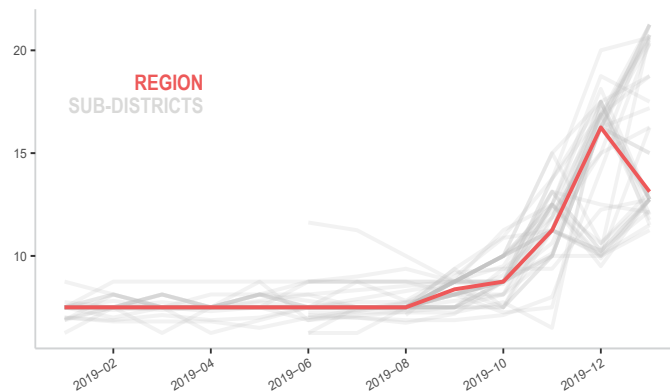
MEDIAN SMEB COOKING FUEL PRICE

Kerosene 25L, Syrian Pounds

Sub-district	SMEB Cooking Fuel	One month change	Six month change	Sub-district	SMEB Cooking Fuel	One month change	Six month change
Northwest Syria	13,125	-19%	75%	Idleb	12,750	28%	28%
Abul Thohur	21,250	31%	183%	Jandairis	12,750	-26%	NA
Afrin	11,250	13%	NA	Janudiyeh	20,750	102%	177%
Aghtrin	15,000	-8%	NA	Jarablus	16,250	8%	NA
Al Bab	12,750	4%	NA	Jisr-Ash-Shugur	18,750	15%	131%
Ariha	17,188	5%	129%	Kafr Nobol	11,500	-32%	53%
Armanaz	20,625	25%	175%	Kafr Takharim	12,125	-3%	62%
Ar-Ra'ee	11,500	14%	NA	Maaret Tamsrin	21,250	31%	193%
Atareb	12,750	24%	70%	Ma'arrat An Nu'man	20,750	23%	177%
A'zaz	17,500	-7%	133%	Ma'btali	16,250	63%	NA
Badama	21,000	29%	180%	Mare'	12,750	-27%	NA
Bennsh	12,188	19%	56%	Mhambal	12,750	29%	36%
Bulbul	20,500	22%	NA	Qourqeena	21,250	42%	183%
Dana	20,688	25%	185%	Salqin	12,750	-27%	82%
Daret Azza	12,750	-30%	70%	Saraqab	12,469	-23%	43%
Darkosh	18,750	7%	150%	Sarmin	12,750	24%	70%
Ehsem	12,000	-31%	48%	Sharan	12,750	-24%	NA
Ghandorah	12,750	20%	NA	Sheikh El-Hadid	13,125	24%	NA
Harim	21,250	26%	198%	Suran	18,125	9%	142%
Haritan	12,750	34%	70%	Teftnaz	11,500	-34%	53%
				Zarbah	20,625	3%	175%
				Ziyara	20,375	NA	196%

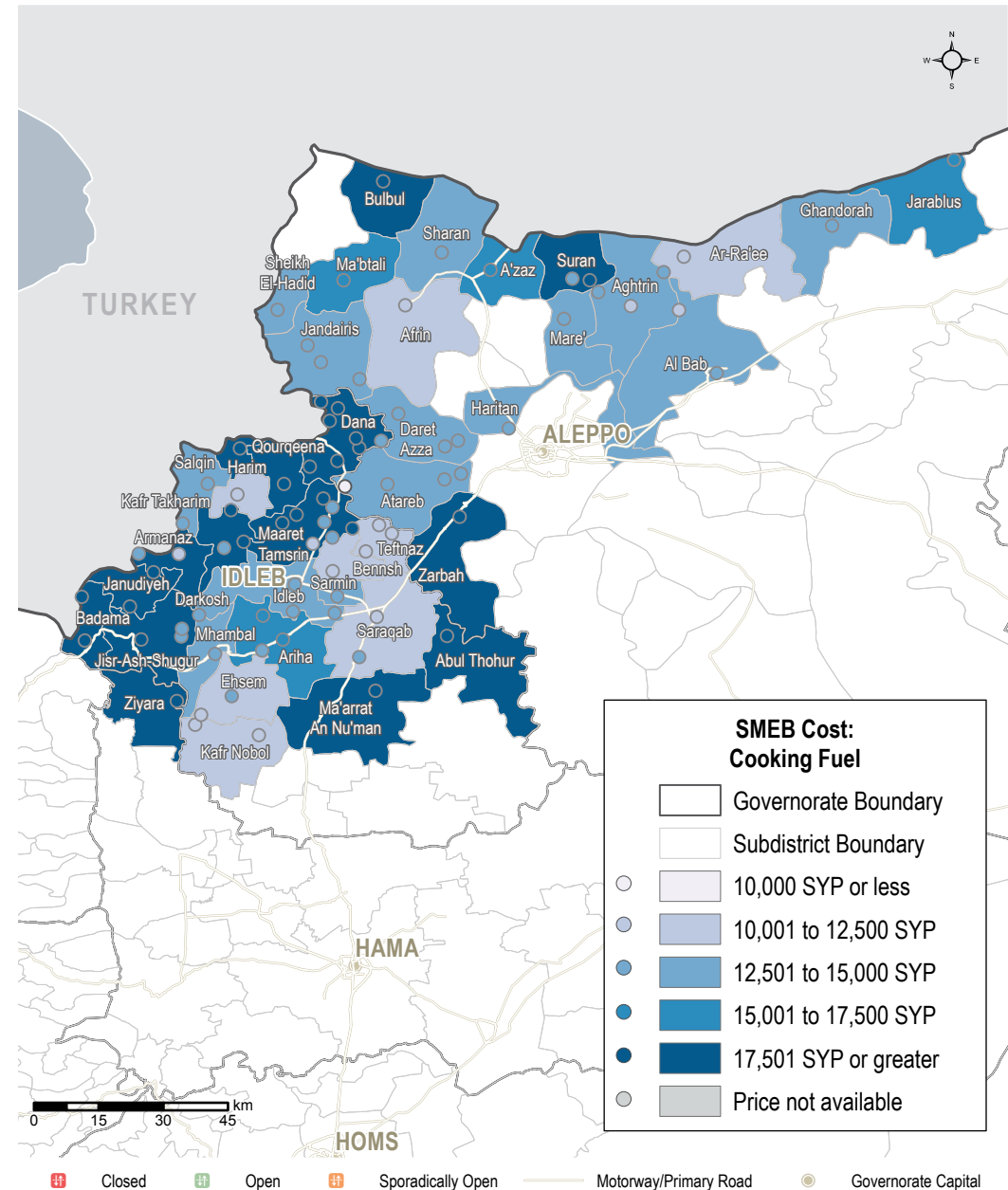
MEDIAN SMEB COOKING FUEL COSTS, BY MONTH

Region (red) and Sub-districts (grey), Thousand Syrian Pounds



SMEB COOKING FUEL COST

Sub-districts & Communities, Syrian Pounds



NORTHWEST SYRIA - SMEB WATER TRUCKING

Northern Hama, Idleb, Western & Northern Aleppo governorates

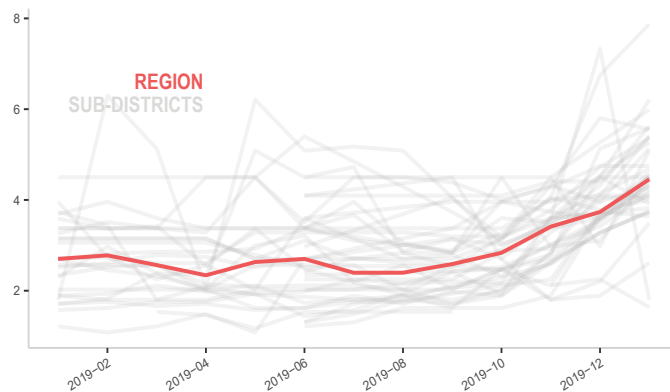
MEDIAN SMEB WATER TRUCKING PRICE

4,500L, Syrian Pounds

Sub-district	SMEB Water Truck	One month change	Six month change	Sub-district	SMEB Water Truck	One month change	Six month change
Northwest Syria	4,500	20%	88%	Idleb	7,875	17%	157%
Abul Thohur	4,095	12%	153%	Jandairis	2,475	12%	NA
Afrin	5,558	-4%	NA	Janudiyeh	4,500	20%	156%
Aghtrin	5,400	25%	NA	Jarablus	5,400	22%	NA
Al Bab	6,210	38%	NA	Jisr-Ash-Shugur	4,095	0%	61%
Ariha	5,265	0%	172%	Kafr Nobol	4,523	21%	60%
Armanaz	4,050	18%	58%	Kafr Takharim	4,048	0%	41%
Ar-Ra'ee	5,400	32%	NA	Maaret Tamsrin	4,343	22%	112%
Atareb	4,669	30%	177%	Ma'arrat An Nu'man	4,005	-1%	41%
A'zaz	4,748	0%	6%	Ma'btali	1,800	-75%	NA
Badama	4,793	29%	7%	Mare'	2,610	38%	NA
Bennsh	3,758	15%	99%	Mhambal	5,288	15%	96%
Bulbul	5,580	9%	NA	Qourqeena	1,636	-27%	7%
Dana	4,095	20%	82%	Salqin	3,690	-4%	36%
Daret Azza	3,735	14%	108%	Saraqab	4,883	23%	81%
Darkosh	5,625	25%	178%	Sarmin	3,735	14%	108%
Ehsem	5,130	73%	1%	Sharan	3,825	4%	NA
Ghandorah	4,275	8%	NA	Sheikh El-Hadid	5,985	14%	NA
Harim	NA	NA	NA	Suran	4,073	11%	35%
Haritan	4,500	25%	100%	Teftnaz	4,500	22%	113%
				Zarbah	4,320	22%	129%
				Ziyara	4,680	NA	42%

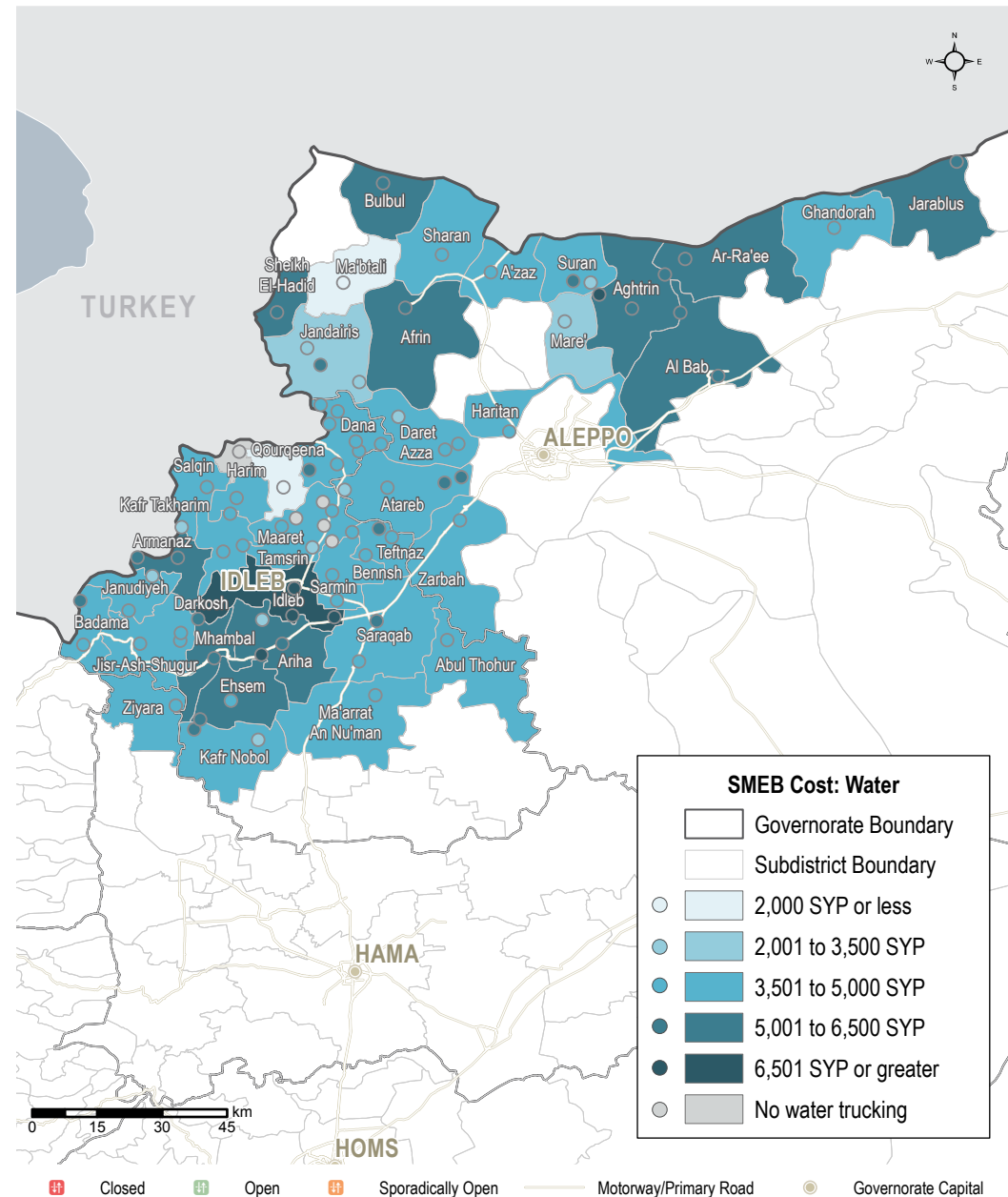
MEDIAN SMEB WATER TRUCKING COSTS, BY MONTH

Thousand Syrian Pounds



SMEB WATER TRUCKING COST

Sub-districts & Communities, Syrian Pounds



NORTHWEST SYRIA - TRANSPORT FUEL

Northern Hama, Idleb, Western & Northern Aleppo governorates

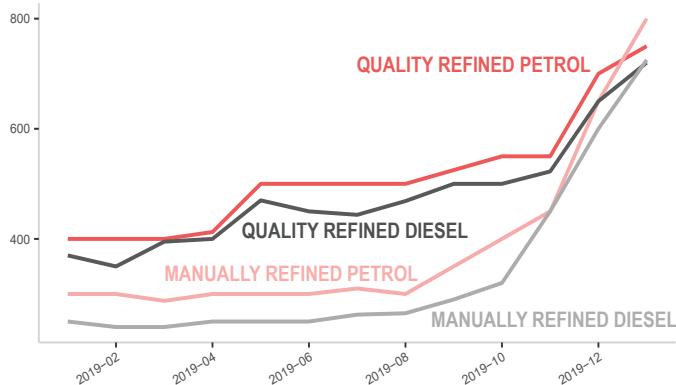
MEDIAN TRANSPORT FUEL PRICE

Diesel and Petrol, 1L (Government of Syria and Manually Refined), Syrian Pounds

Sub-district	SMEB Trans Fuel	One month change	Six month change	Sub-district	SMEB Trans Fuel	One month change	Six month change
Northwest Syria	790	32%	111%	Idleb	750	30%	88%
Abul Thohur	NA	NA	NA	Jandairis	784	34%	NA
Afrin	650	NA	NA	Janudiyeh	NA	NA	NA
Aghtrin	700	12%	NA	Jarablus	NA	NA	NA
Al Bab	NA	NA	NA	Jisr-Ash-Shugur	790	32%	112%
Ariha	804	34%	105%	Kafr Nobol	668	8%	74%
Armanaz	725	12%	119%	Kafr Takharim	708	19%	86%
Ar-Ra'ee	663	10%	NA	Maaret Tamsrin	804	30%	99%
Atareb	773	23%	103%	Ma'arrat An Nu'man	825	24%	118%
A'zaz	697	10%	86%	Ma'btali	NA	NA	NA
Badama	NA	NA	NA	Mare'	733	22%	NA
Bennsh	735	7%	92%	Mhambal	NA	NA	NA
Bulbul	NA	NA	NA	Qourqeena	723	13%	105%
Dana	769	26%	127%	Salqin	790	24%	200%
Daret Azza	NA	NA	NA	Saraqab	735	7%	76%
Darkosh	790	29%	198%	Sarmin	NA	NA	NA
Ehsem	710	7%	101%	Sharan	NA	NA	NA
Ghandorah	NA	NA	NA	Sheikh El-Hadid	NA	NA	NA
Harim	NA	NA	NA	Suran	743	19%	98%
Haritan	NA	NA	NA	Teftnaz	727	10%	89%
				Zarbah	725	NA	91%
				Ziyara	NA	NA	NA

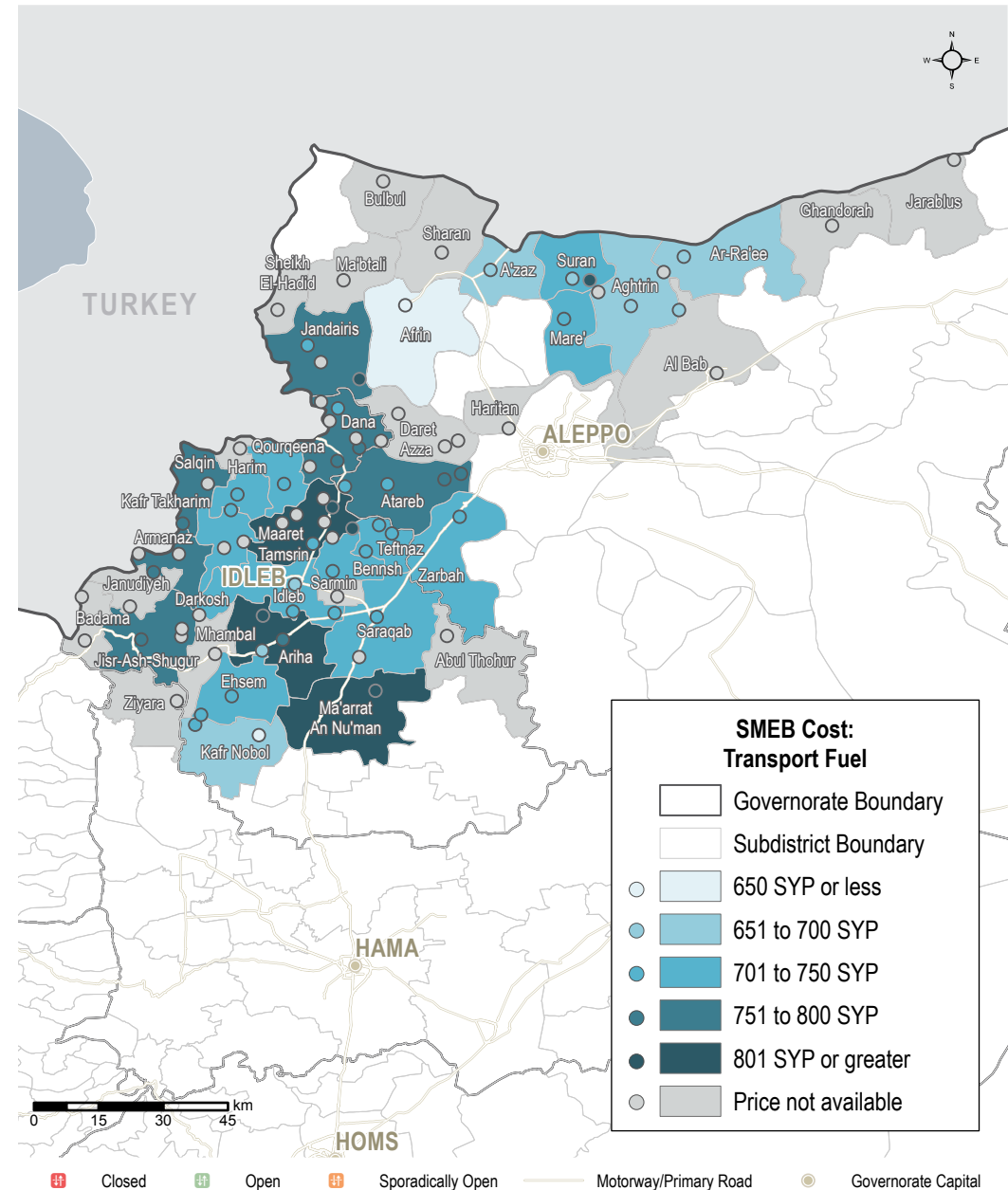
MEDIAN TRANSPORT FUEL COSTS, BY MONTH & TYPE

Syrian Pounds



TRANSPORT FUEL COST

Sub-districts & Communities, Syrian Pounds



NORTHWEST SYRIA - CELLPHONE DATA

Northern Hama, Idleb, Western & Northern Aleppo governorates

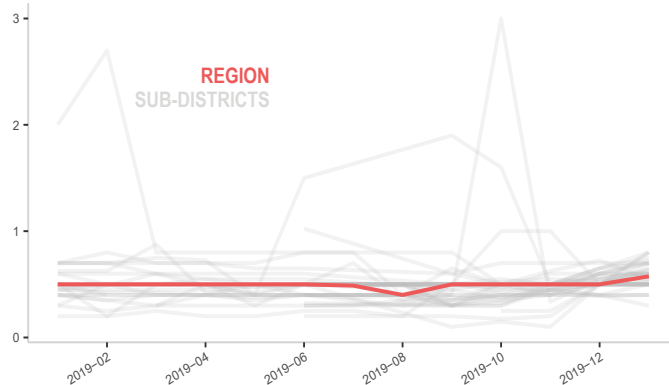
MEDIAN SMEB CELLPHONE DATA PRICE

1GB data, Syrian Pounds

Sub-district	SMEB Data (1GB)	One month change	Six month change	Sub-district	SMEB Data (1GB)	One month change	Six month change
Northwest Syria	575	15%	44%	Idleb	500	25%	25%
Abul Thohur	600	0%	50%	Jandairis	625	25%	NA
Afrin	600	20%	NA	Janudiyeh	500	0%	67%
Aghtrin	500	0%	NA	Jarablus	500	0%	NA
Al Bab	600	4%	NA	Jisr-Ash-Shugur	525	5%	22%
Ariha	700	17%	75%	Kafr Nobol	725	21%	81%
Armanaz	500	0%	11%	Kafr Takharim	613	11%	23%
Ar-Ra'ee	800	60%	NA	Maaret Tamsrin	600	0%	20%
Atareb	500	0%	60%	Ma'arrat An Nu'man	700	40%	75%
A'zaz	550	-24%	38%	Ma'btali	700	0%	NA
Badama	575	15%	15%	Mare'	650	30%	NA
Bennsh	400	0%	-20%	Mhambal	300	-14%	-4%
Bulbul	750	15%	NA	Qourqeena	550	0%	65%
Dana	700	40%	40%	Salqin	600	20%	50%
Daret Azza	500	25%	25%	Saraqab	500	11%	25%
Darkosh	500	0%	167%	Sarmin	800	60%	60%
Ehsem	413	3%	-8%	Sharan	525	0%	NA
Ghandorah	500	0%	NA	Sheikh El-Hadid	500	0%	NA
Harim	650	30%	NA	Suran	700	30%	100%
Haritan	700	8%	40%	Teftnaz	500	0%	0%
				Zarbah	500	0%	43%
				Ziyara	800	NA	60%

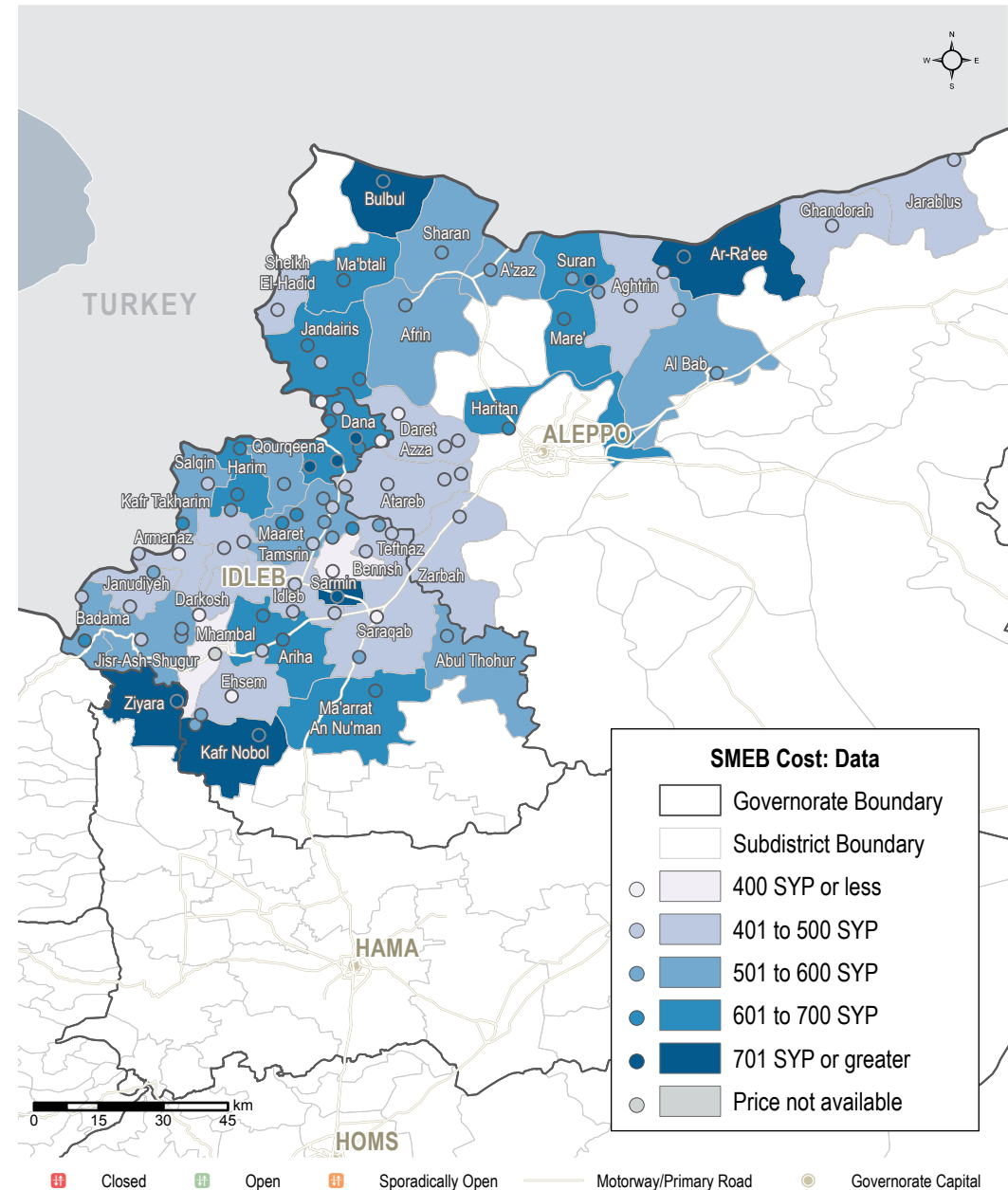
MEDIAN SMEB CELLPHONE DATA COST, BY MONTH

Thousand Syrian Pounds



SMEB CELLPHONE DATA COST

Sub-districts & Communities, Syrian Pounds



NORTHWEST SYRIA - SMEB HYGIENE ITEMS

Northern Hama, Idleb, Western & Northern Aleppo governorates

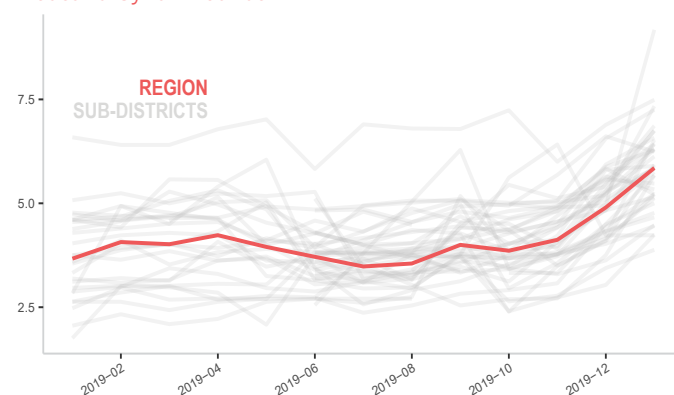
MEDIAN SMEB HYGIENE ITEMS' PRICE

12 bars of soap, 4 packs of 10 sanitary pads, 3kg of laundry/dish soap, 200g of toothpaste, Syrian Pounds

Sub-district	SMEB Hygiene Items	One month change	Six month change	Sub-district	SMEB Hygiene Items	One month change	Six month change
Northwest Syria	5,813	20%	59%	Idleb	5,475	-2%	20%
Abul Thohur	5,900	2%	80%	Jandairis	5,700	24%	NA
Afrin	4,475	23%	NA	Janudiyeh	NA	NA	NA
Aghtrin	4,598	-4%	NA	Jarablus	5,219	27%	NA
Al Bab	5,673	51%	NA	Jisr-Ash-Shugur	5,290	3%	47%
Ariha	5,813	47%	82%	Kafr Nobol	4,716	6%	57%
Armanaz	6,294	30%	59%	Kafr Takharim	7,338	41%	54%
Ar-Ra'ee	5,150	7%	NA	Maaret Tamsrin	5,938	1%	53%
Atareb	5,049	24%	39%	Ma'arrat An Nu'man	6,525	54%	121%
A'zaz	6,241	-1%	23%	Ma'btali	5,850	15%	NA
Badama	7,401	32%	NA	Mare'	NA	NA	NA
Bennsh	6,126	17%	52%	Mhambal	6,455	34%	65%
Bulbul	6,578	11%	NA	Qourqeena	5,675	26%	27%
Dana	6,475	17%	63%	Salqin	6,515	28%	64%
Daret Azza	7,794	14%	15%	Saraqab	7,018	18%	61%
Darkosh	7,275	30%	165%	Sarmin	4,232	0%	15%
Ehsem	4,223	8%	38%	Sharan	5,334	-6%	NA
Ghandorah	4,244	40%	NA	Sheikh El-Hadid	9,175	85%	NA
Harim	6,741	25%	100%	Suran	5,703	2%	17%
Haritan	4,455	11%	33%	Teftnaz	4,638	9%	59%
				Zarbah	5,225	18%	106%
				Ziyara	6,864	NA	116%

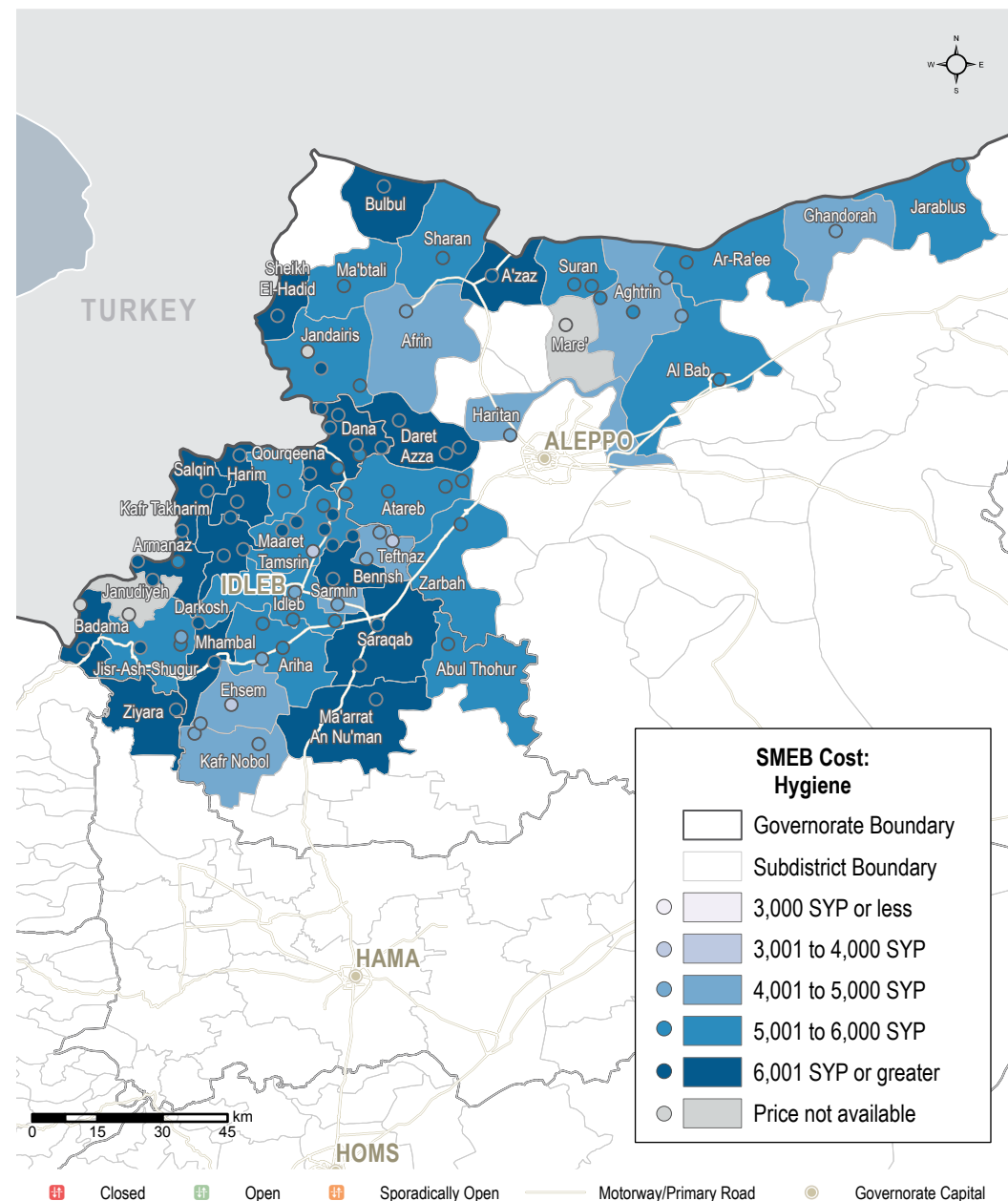
MEDIAN SMEB HYGIENE ITEMS' COSTS, BY MONTH

Thousand Syrian Pounds



SMEB HYGIENE ITEMS' COST

Sub-districts & Communities, Syrian Pounds



MEDIAN WINTERISATION ITEMS

Per 1 piece, Syrian Pounds

Sub-district	Jerry cans	Plastic sheets	Winter carpets	Kerosene/diesel heaters	Winter blanket	Mattress	Men's winter jacket	Women's winter jacket	Children's winter jacket	Men's winter boots	Women's winter boots	Children's winter boots	Adult hat	Children's hat
Northwest Syria	1,400	5,500	25,000	14,000	3,950	5,500	10,000	13,625	5,500	4,500	4,000	2,750	1,000	738
Abul Thohur	2,000	5,500	16,000	11,000	3,000	5,000	11,000	14,000	5,500	5,000	3,800	2,200	800	650
Afrin	1,500	8,000	20,000	22,000	5,000	4,500	8,000	7,750	5,000	6,000	6,250	2,750	500	500
Aghtrin	1,400	7,500	37,000	15,000	7,250	6,750	11,500	9,250	7,000	6,500	4,200	3,100	1,250	1,000
Al Bab	NA	NA	67,500	12,000	9,000	8,500	12,500	9,500	7,000	6,000	4,500	3,200	1,000	1,000
Ariha	1,400	3,500	44,000	14,000	1,300	3,500	10,500	21,000	6,500	5,000	4,500	3,700	1,200	900
Armanaz	1,200	4,500	19,500	14,000	3,950	6,000	10,500	17,000	6,500	3,500	4,000	2,500	900	750
Ar-Ra'ee	1,250	6,800	28,000	9,000	7,500	7,000	13,750	11,000	9,250	5,000	3,500	3,000	1,100	750
Atareb	2,000	6,000	24,000	22,000	4,000	3,750	8,000	7,625	4,500	4,750	3,750	2,750	1,000	800
A'zaz	1,500	5,000	37,000	6,500	3,500	5,000	10,000	15,000	7,500	4,250	3,000	2,250	1,500	1,250
Badama	1,725	5,200	28,500	13,250	6,275	5,675	12,375	18,500	8,025	4,375	4,975	3,225	1,100	875
Bennsh	1,225	4,850	15,500	16,250	2,550	5,900	9,900	14,100	5,400	5,500	4,150	3,550	1,275	850
Bulbul	2,000	5,500	27,000	11,000	5,000	5,000	11,200	15,200	6,800	3,200	3,300	2,100	625	600
Dana	2,000	5,600	28,000	12,000	5,000	5,500	11,000	15,500	6,600	3,250	3,600	2,300	700	600
Daret Azza	950	6,000	45,000	17,000	8,500	6,000	8,000	11,500	5,500	5,500	5,000	3,000	1,100	1,000
Darkosh	1,200	5,250	17,000	16,000	4,000	5,500	8,500	11,500	5,000	3,250	3,500	2,250	1,000	750
Ehsem	950	5,250	22,500	11,250	3,750	7,000	14,000	24,000	2,500	4,500	4,250	2,000	1,000	700
Ghandorah	1,300	6,500	36,000	10,250	3,000	6,500	9,500	7,500	5,250	5,750	3,000	3,000	900	500
Harim	1,500	5,500	19,500	16,000	5,800	5,000	11,500	13,500	4,800	4,500	5,000	2,000	1,200	900
Haritan	1,000	6,500	NA	10,000	NA	NA	10,000	15,000	6,000	5,000	4,000	3,500	1,000	500
Idlib	1,300	2,800	14,500	15,000	4,250	4,300	10,500	13,500	5,000	3,700	2,700	2,500	700	700
Jandairis	2,000	4,500	35,000	15,000	3,500	5,750	7,500	9,500	5,000	4,000	4,000	2,500	1,200	725
Janudiyeh	1,200	NA	NA	14,000	6,500	6,000	13,500	20,000	8,500	4,500	6,000	4,000	1,400	1,200
Jarablus	1,400	6,600	36,000	10,500	2,300	6,500	9,000	7,500	5,000	6,000	3,500	3,000	1,000	500
Jisr-Ash-Shugur	1,813	6,250	29,000	17,000	2,825	6,250	7,250	6,000	3,000	3,500	2,500	1,600	1,000	500
Kafr Nobol	800	4,500	9,000	NA	3,800	3,500	7,000	6,500	4,000	6,750	5,750	3,750	1,500	1,000
Kafr Takharim	1,100	4,900	11,500	12,750	1,900	4,000	7,000	14,000	4,600	3,500	4,200	3,000	900	700

MEDIAN WINTERISATION ITEMS

Per 1 piece, Syrian Pounds

Sub-district	Jerry cans	Plastic sheets	Winter carpets	Kerosene/diesel heaters	Winter blanket	Mattress	Men's winter jacket	Women's winter jacket	Children's winter jacket	Men's winter boots	Women's winter boots	Children's winter boots	Adult hat	Children's hat
Maaret Tamsrin	1,900	5,600	24,000	12,000	4,000	5,000	11,000	14,500	5,500	3,000	3,100	2,000	825	600
Ma'arrat An Nu'man	1,600	6,500	25,000	11,000	4,000	4,500	10,000	16,500	5,500	3,000	2,800	2,000	850	650
Ma'btali	NA	NA	NA	NA	NA	NA	NA	NA	NA	NA	NA	NA	NA	NA
Mare'	2,500	4,500	35,000	15,000	3,200	5,800	8,000	9,250	5,000	4,000	4,500	2,000	1,500	725
Mhambal	NA	5,500	35,000	NA	6,000	5,000	12,875	19,375	6,750	3,450	3,550	2,450	600	400
Qourqeena	1,500	5,650	23,500	11,750	3,100	4,750	9,550	9,800	5,750	3,750	3,500	2,500	1,000	500
Salqin	1,650	3,600	30,500	16,500	3,375	6,625	9,250	13,750	6,000	5,500	5,125	4,250	1,375	1,100
Saraqab	1,038	4,150	12,575	12,000	2,863	3,975	9,750	9,600	4,700	4,500	4,425	2,650	863	700
Sarmin	1,150	4,900	NA	19,000	3,100	6,000	12,000	16,000	5,500	5,750	4,500	3,500	1,200	800
Sharan	700	7,500	24,000	17,000	1,800	5,200	7,250	6,000	3,000	3,750	2,600	1,750	1,100	500
Sheikh El-Hadid	1,200	6,500	22,000	18,000	4,500	6,000	9,000	14,000	6,000	4,500	5,000	3,000	1,500	1,000
Suran	1,600	4,250	52,750	13,000	5,750	7,500	11,750	9,875	5,625	4,625	3,750	3,150	1,175	975
Teftnaz	900	3,800	8,850	12,250	1,050	3,950	9,775	14,900	3,775	3,700	3,150	2,825	1,138	813
Zarbah	600	NA	NA	18,000	NA	NA	NA	NA	NA	NA	NA	NA	NA	NA
Ziyara	NA	NA	NA	NA	NA	NA	NA	NA	NA	NA	NA	NA	NA	NA

MEDIAN WINTERISATION ITEMS (ALTERNATIVE HEATING/COOKING FUEL)

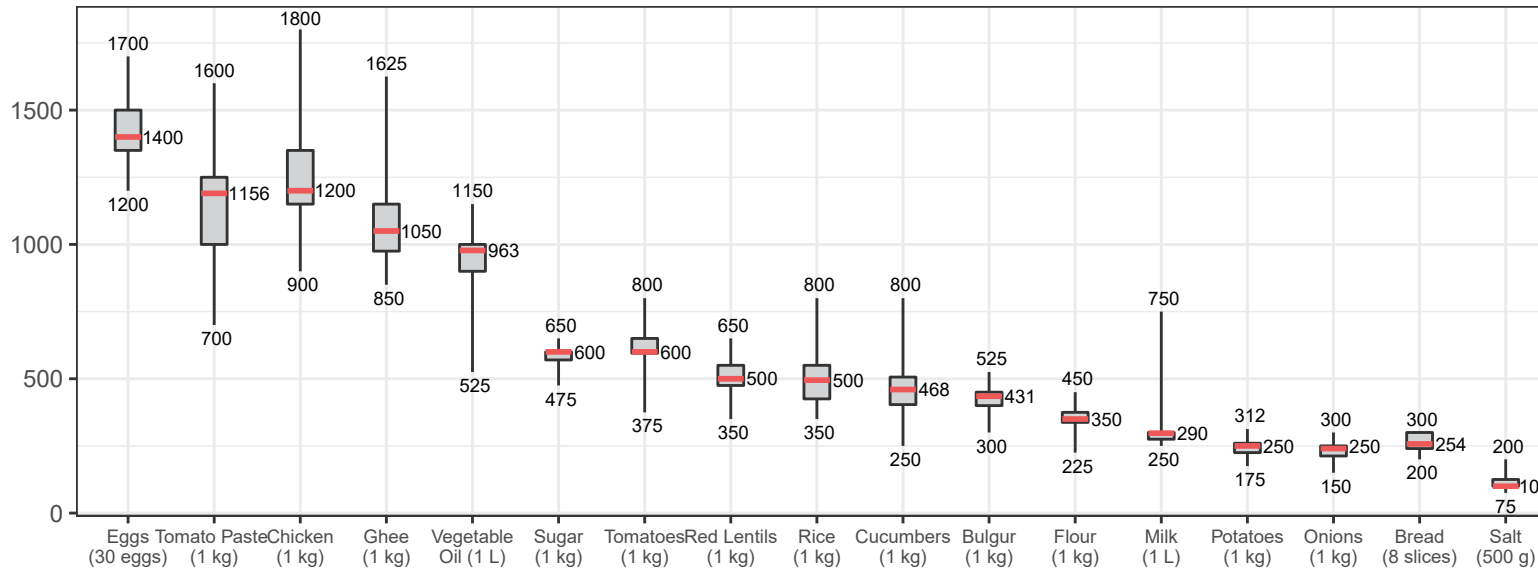
Per 1 kilogram, Syrian Pounds

Sub-district	Coal	Firewood	Olive residue	Pistachio shells
Northwest Syria	85	93	85	195
Abul Thohur	85	110	85	200
Afrin	NA	70	70	180
Aghtrin	38	93	75	NA
Al Bab	75	90	75	NA
Ariha	70	75	78	143
Armanaz	85	80	90	200
Ar-Ra'ee	135	90	80	NA
Atareb	90	85	88	170
A'zaz	148	85	83	NA
Badama	95	108	98	185
Bennsh	118	103	113	195
Bulbul	84	105	82	202
Dana	85	110	85	205
Daret Azza	95	90	85	325
Darkosh	80	65	85	200
Ehsem	80	88	80	195
Ghandorah	35	100	85	NA
Harim	75	110	80	190
Haritan	100	100	85	NA
Idlib	70	95	80	150

Sub-district	Coal	Firewood	Olive residue	Pistachio shells
Jandairis	83	88	80	185
Janudiyeh	950	110	105	NA
Jarablus	160	150	95	260
Jisr-Ash-Shugur	85	65	85	NA
Kafr Nobol	73	85	85	185
Kafr Takharim	65	84	90	NA
Maaret Tamsrin	85	110	90	195
Ma'arrat An Nu'man	85	100	85	205
Ma'btali	NA	65	NA	NA
Mare'	80	75	90	175
Mhambal	106	77	NA	NA
Qourqeena	90	90	93	183
Salqin	78	99	88	200
Saraqab	48	72	72	148
Sarmin	85	100	100	215
Sharan	70	60	75	175
Sheikh El-Hadid	75	65	70	NA
Suran	80	95	75	NA
Teftnaz	88	98	80	180
Zarbah	80	100	85	NA
Ziyara	95	100	95	205

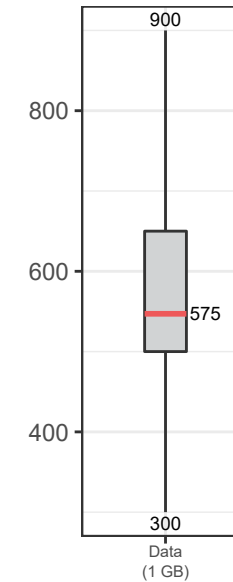
ASSESSED FOOD ITEMS

Syrian Pounds



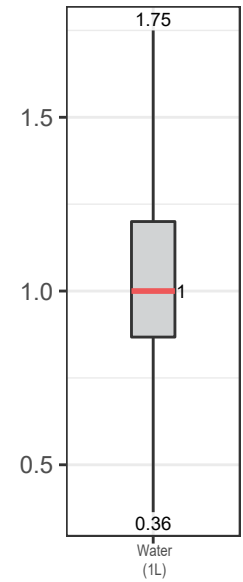
CELLPHONE DATA

Syrian Pounds



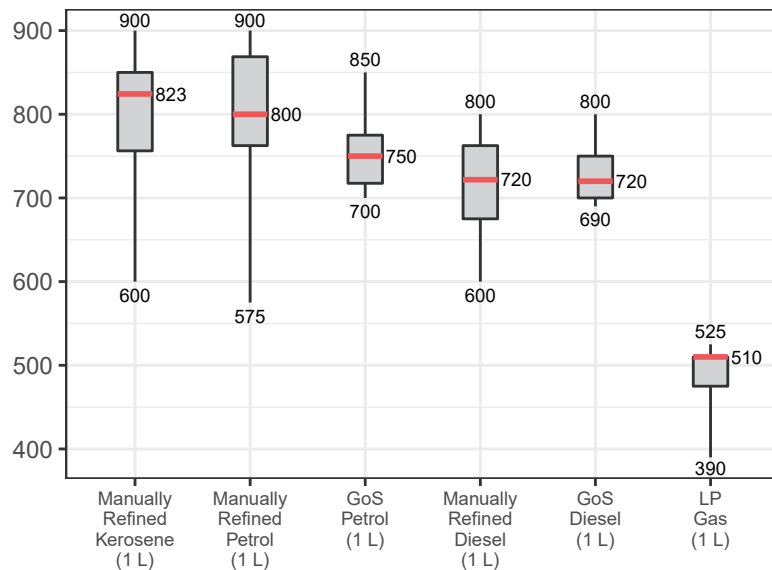
WATER TRUCKING

Syrian Pounds



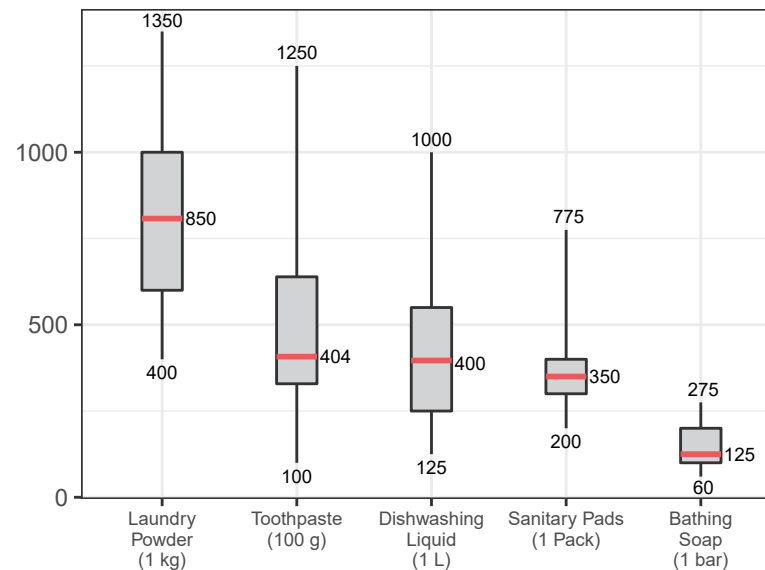
ASSESSED FUEL ITEMS

Syrian Pounds

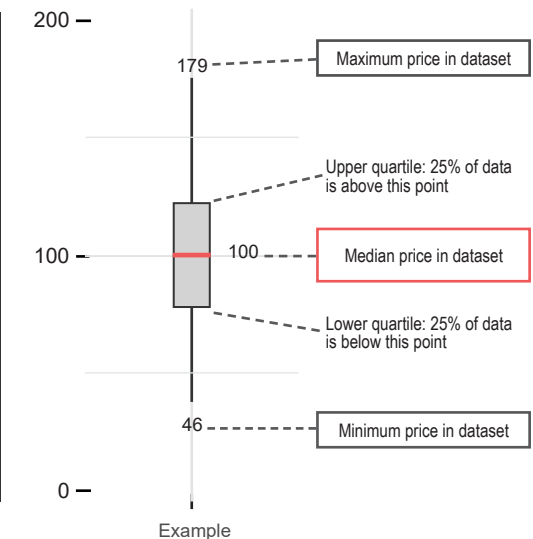


ASSESSED HYGIENE ITEMS

Syrian Pounds



READING BOXPLOTS



METHODOLOGY

In order to be included in the Syria Market Monitoring Exercise, markets must be permanent in nature, large enough to support at least two wholesalers, and diverse enough to provide a sufficient variety of goods and commodities. Additionally, the shops surveyed within each market must be housed in permanent structures and must sell certain items to be eligible for inclusion. Participating organisations train their enumerators on the Market Monitoring methodology and data collection tools using standard training materials developed by REACH. Each enumerator aims to assess three to five shops of each type in the main market in their assigned sub-district, using surveys to collect information about the cheapest prices of each item and whether there are any barriers in the supply chain. In sub-districts where direct surveying by enumerators is not possible, data collection is conducted remotely through key informants such as shop owners, suppliers and consumers. A survey form is deployed on KoBo each month to capture price and stock information from different types of establishments, including grocery stores, fuel traders, currency exchange shops, water trucking services and mobile phone shops, among others. Nearly all participating partners submit their data to these KoBo forms, using the KoBoCollect Android app to upload data. A small number of partners, by prior permission, collect data using fully harmonised data collection tools deployed on other platforms, then submit their raw data to REACH for standardisation, compilation and cleaning.

Following data collection, REACH compiles and cleans all partners' data, normalising prices and cross-checking outliers. The cleaned data is then analysed by SMEB costs, components of the SMEB, and by commodities. These trends are observed at the sub-district-level and, when possible, at the community-level. Prices are divided into quartiles and boxplots are created to assist CBR-TWG members in understanding the distribution of prices across the northeast and

northwest of Syria. To illustrate local variations in prices and availability, REACH uses the collected data to map the price of the SMEB in each sub-district and adds illustrations of surrounding border crossings, with data sourced from the United Nations Office for the Coordination of Humanitarian Affairs (OCHA). In addition, each SMEB component costs and transport fuel prices are graphed to visualize trends over time.

The cleaned datasets are available on the [Humanitarian Data Exchange](#) website and are distributed to all participating partners, as well as to interested clusters and the broader humanitarian community.

Calculating 'median cheapest price'

This figure is calculated by taking the median of the minimum-reported prices of a region's sub-districts. In turn, the minimum-reported prices for each sub-district were taken from the median of the minimum-reported prices of the constituent towns assessed.

Calculating Survival Minimum Expenditure Basket (SMEB) costs

The cost of a SMEB is calculated for each assessed sub-district by calculating the median cheapest price of each SMEB commodity in that sub-district, then multiplying these medians by the number of units that an average Syrian household requires to purchase in a month. The composition of the SMEB can be found on [page 1](#). SMEB vegetables includes potatoes, tomatoes, onions and cucumbers.

Calculating price trends over time

One month and six-month price changes and trends are calculated only with the communities of a sub-district with consistent coverage across months. For the current month's regional SMEB cost, all assessed communities are included in determining medians; thus, prices and percentage changes within the Costs and Changes tables may differ from the current month's regional SMEB cost.

Seasonal items

Winterisation items have been added to the market monitoring exercise and data collection will continue for these items over winter, until February 2020. Whilst other commodities are bought regularly by families, winterisation items are not expected to be bought regularly and may be one-off purchases for each family member.

Changes to coverage

Given security and access constraints in the south of Syria and in northeast Syria, data collection has been unable to take place since July 2018 and October 2019, respectively.

Challenges and limitations

As the Syria Market Monitoring Exercise currently includes 13 partners based in 2 hubs, achieving a consistent approach is inherently challenging. Participating organisations are therefore requested to adopt harmonised data collection methodologies and tools to ensure that the data uploaded is as accurate as possible. Because this exercise collects data directly from vendors and relies on partner organizations for its wide coverage, Market Monitoring may sporadically lose coverage temporarily or for longer periods of time owing to challenges in accessing locations or due to loss in the shared data collection capacity of the project. This impacts the ability to report on trends, as can be seen in the line graphs and 'NA' values in the tables.

ABOUT REACH

REACH Initiative facilitates the development of information tools and products that enhance the capacity of aid actors to make evidence-based decisions in emergency, recovery and development contexts. The methodologies used by REACH include primary data collection and in-depth analysis, and all activities are conducted through inter-agency aid coordination mechanisms. REACH is a joint initiative of IMPACT Initiatives, ACTED and the United Nations Institute for Training and Research - Operational Satellite Applications Programme (UNITAR-UNOSAT). For more information please visit our website:

www.reach-initiative.org. You can contact us directly at: geneva@reach-initiative.org and follow us on Twitter [@REACH_info](https://twitter.com/REACH_info)

ABOUT THE CASH-BASED RESPONSES TECHNICAL WORKING GROUP

The Cash-Based Responses Technical Working Group (CBR-TWG) was established in May 2014 to analyse the impact of the ongoing conflict on markets in Syria and guide the implementation of humanitarian cash and voucher programmes within those markets. REACH and the CBR-TWG have been partners on the Syria Market Monitoring Exercise since early 2015.