

### Summary

This factsheet provides an overview of humanitarian needs in IDP settlements in Gaalkacyo North. The findings presented here are part of an assessment with the objective to support multi-sectoral and area-based approaches to intervention in IDP settlements in Somalia.

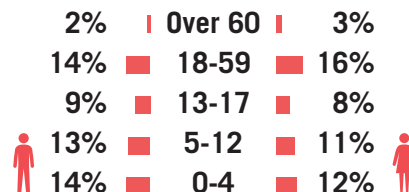
Primary data was collected through household surveys, key informant interviews and facility mapping from 15 May to 3 June. Households were randomly sampled to a 95% confidence and 10% margin of error. Population figures were provided through settlement key informant interviews.

1408 households and 18 key informants were interviewed in Gaalkacyo North.

### Overview

**Estimated Population:** 59,913  
**Estimated Number of HHs:** 8,559  
**Number of Settlements:** 18

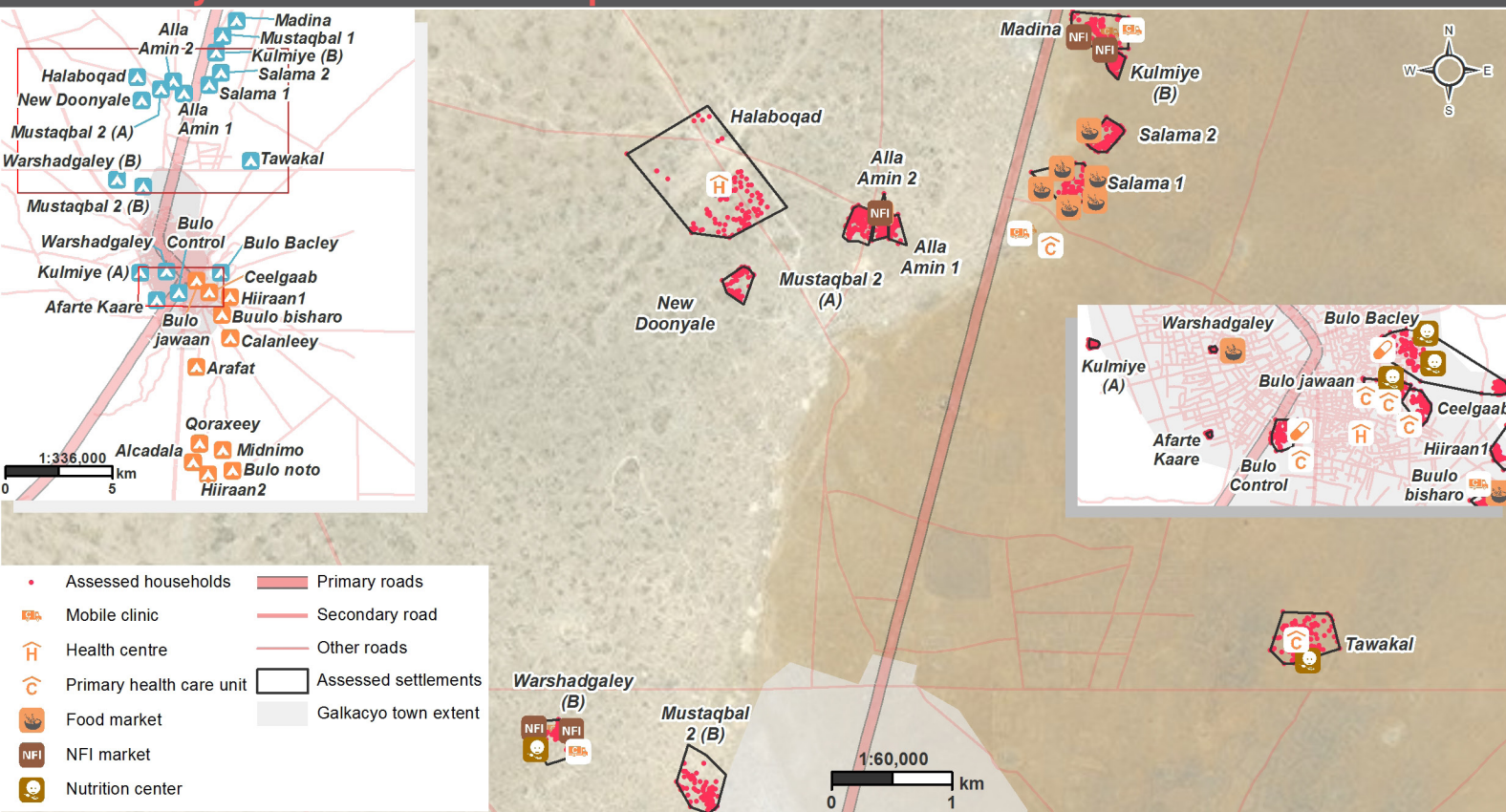
### Demographics



### Location Map



### Gaalkacyo North Settlement Map



### Sectoral Overview

		Target <sup>1</sup>	Current Situation	
Education	% of children aged 5-12 that attend school	100%	31%	●
	% of children aged 13-17 that attend school	100%	15%	●
	% of schools that meet minimum teacher to student criteria of 1 teacher to every 45 students	100%	67%	●
Food	% of HHs reporting an acceptable food consumption score	100%	35%	●
	% of HHs that received food assistance in the past 3 months	100%	7%	●
Shelter/NFIs	% of HHs reporting any damage to shelter	0%	55%	●
Health	% of HHs that are able to access health facilities on site or within walking distance	100%	72%	●
Water & Sanitation	% of HHs within 500m of a potable water point	100%	99%	●
	% of HHs within 50m of a functioning latrine	100%	52%	●
Protection	% of HHs that have reported to be registered by a legitimate agency	100%	62%	●
	% of HHs with land tenure rights / arrangements	100%	45%	●

1) Targets are based on minimum Sphere or UNHCR standards. ● Target reached, ● Target more than 50% reached, ● Target less than 50% or not at all reached.



Funded by  
European Union  
Humanitarian Aid

For more information on this profile please contact:  
 REACH Initiative: [somalia@reach-initiative.org]  
<http://www.reachresourcecentre.info/countries/somalia>

**REACH** Informing  
more effective  
humanitarian action

## Displacement

% of population profile	%	# of HHs
IDP	<b>94%</b>	<b>1331</b>
Host community	<b>5%</b>	<b>69</b>
Returnee	<b>1%</b>	<b>8</b>

Primary pull factors for arriving in location:<sup>1</sup>

IDP's	
<b>1</b> No conflict	<b>58%</b>
<b>2</b> Availability of assistance	<b>50%</b>
<b>3</b> Availability of work	<b>42%</b>

Primary push factors for leaving area of origin:<sup>1</sup>

IDP's	
<b>1</b> Conflict in the community	<b>66%</b>
<b>2</b> Drought	<b>33%</b>
<b>3</b> Lack of livelihood	<b>29%</b>

Data on push and pull factors for returnee populations is not presented due to the small representation in the settlement.

Relationship with the host communities:<sup>2</sup>

Very good	<b>56%</b>
Good	<b>36%</b>
Fair	<b>7%</b>
Bad	<b>1%</b>

## Shelter

% of reported shelter types:	
CGI sheeting	<b>44%</b>
Permanent structure	<b>17%</b>
Buil	<b>34%</b>
Tent	<b>5%</b>

% of reported shelter categories:

Temporary	<b>43%</b>
Permanent	<b>31%</b>
Emergency	<b>21%</b>
Semi-permanent	<b>5%</b>

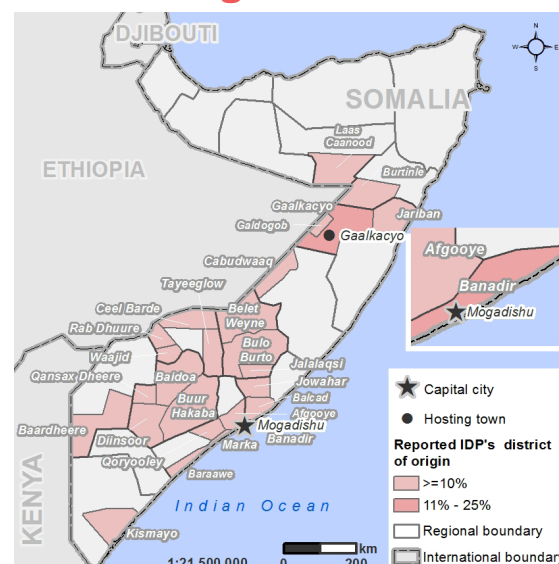
% of reported primary shelter materials:

Floor:	Earth	<b>71%</b>
Main structure:	Wood	<b>76%</b>
Walls & roof:	Iron sheet	<b>49%</b>

Note:

- 1) Households could choose multiple answers.
- 2) As reported by IDP households.

## Areas of Origin

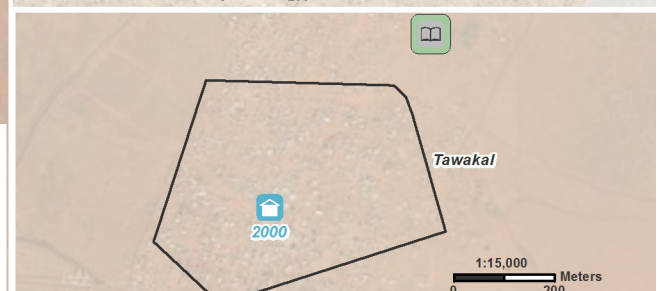
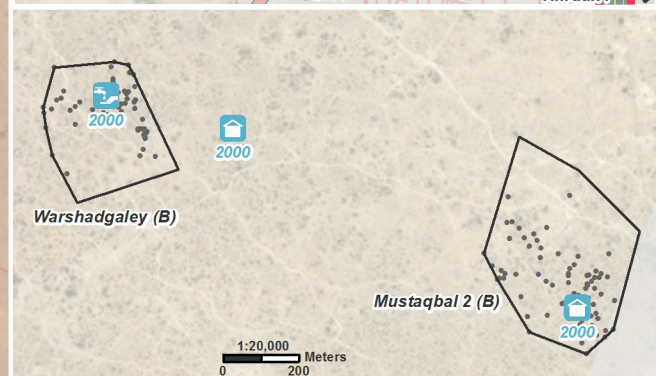
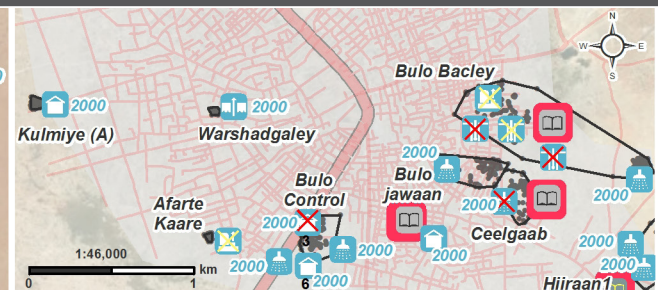
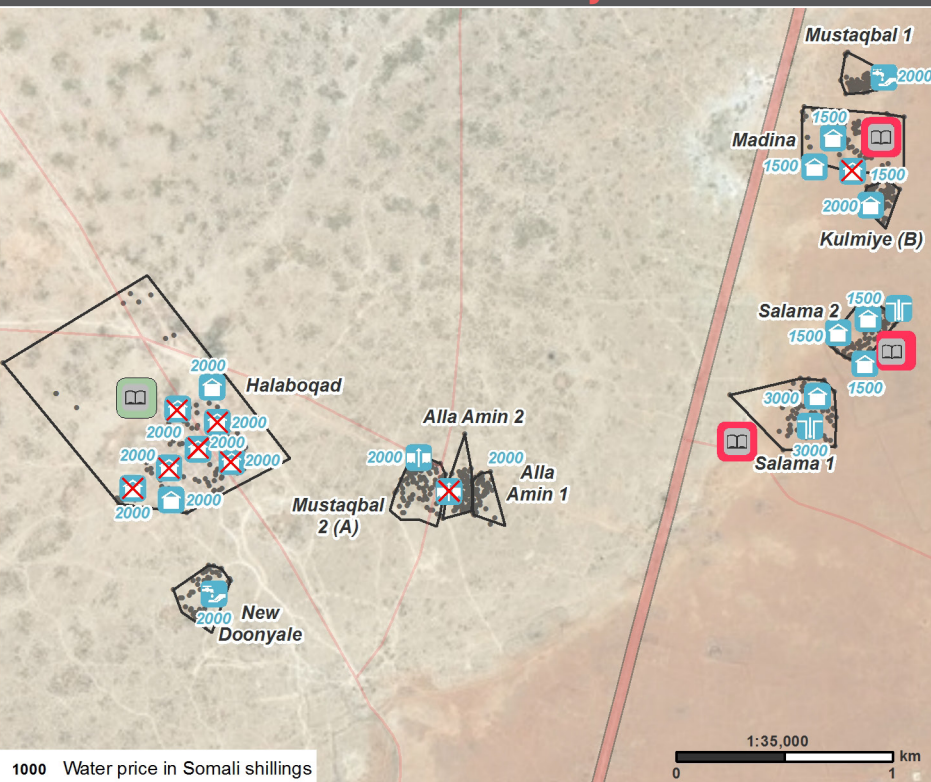


## Priority Concerns

Top 3 priority needs reported by households:<sup>1</sup>

Food	<b>36%</b>
Shelter	<b>29%</b>
Healthcare	<b>12%</b>

## Water and School Accessibility



1000 Water price in Somali shillings

Assessed households	Other piped	Non functioning	Quranic school
Borehole	Protected well with a pump	Functioning but not drinkable	Primary school
Burkad			No school feeding program
Kiosk	Tank & tap		School feeding program exist



Funded by  
European Union  
Humanitarian Aid

For more information on this profile please contact:  
REACH Initiative: [somalia@reach-initiative.org](mailto:somalia@reach-initiative.org)  
<http://www.reachresourcecentre.info/countries/somalia>

**REACH** Informing  
more effective  
humanitarian action



## Water & Sanitation

The 3 most common water sources for drinking water as reported by households:<sup>1</sup>

- |   |              |     |
|---|--------------|-----|
| 1 | Piped system | 34% |
| 2 | Kiosk        | 34% |
| 3 | Burkad       | 17% |

% of reported latrine types used by households:

- |                 |     |
|-----------------|-----|
| Communal        | 71% |
| Private         | 21% |
| Open defecation | 8%  |

## Communication

3 most trusted information sources reported by HHs:<sup>1</sup>

- |   |                                |     |
|---|--------------------------------|-----|
| 1 | Friends, neighbours and family | 85% |
| 2 | Radio                          | 50% |
| 3 | Community leader               | 44% |

## Food Security

% of households reporting a change in food spending since previous month:

- |           |     |
|-----------|-----|
| Increase  | 56% |
| Decrease  | 20% |
| No change | 24% |

Average food spending per household of six members for one week: **18 USD**.

Food Minimum Expenditure Basket (MEB) for Mudug in May was **103 USD**.

## Livelihood

Top 3 primary livelihood sources in the past year:

- |   |                         |     |
|---|-------------------------|-----|
| 1 | Day labour              | 53% |
| 2 | Humanitarian assistance | 11% |
| 3 | Business/ self employed | 9%  |

## Health

Health facilities available within 5 km of the assessed settlements:

- |               |   |
|---------------|---|
| Mobile clinic | 3 |
| PCU           | 2 |
| Pharmacy      | 2 |
| Health centre | 1 |

## Education

Schools available within 1km of the assessed settlements:

- |         |   |
|---------|---|
| Primary | 6 |
|---------|---|

% of households within 1km of a school:

- |     |     |
|-----|-----|
| Yes | 62% |
| No  | 38% |

Average reported school dropout rate during the past school year as reported by school representatives:

- |       |     |
|-------|-----|
| Boys  | 8%  |
| Girls | 10% |

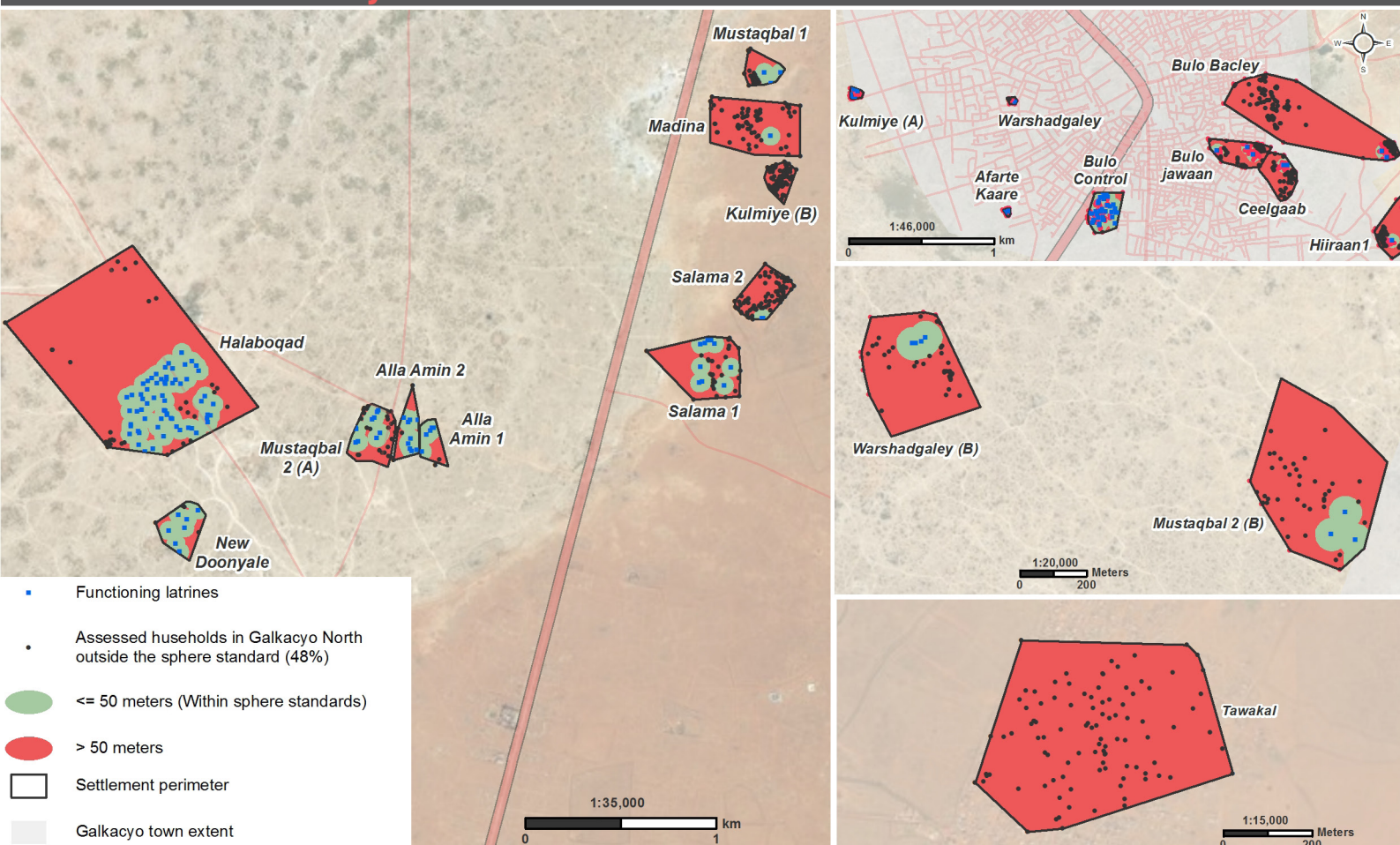
## Vulnerabilities

% of households reporting the following members:

- |                             |     |
|-----------------------------|-----|
| Pregnant/lactating women    | 38% |
| Disabled or chronically ill | 21% |
| Sick children               | 19% |
| Separated children          | 3%  |

Note: 1) Households could choose multiple answers.

## Latrine Accessibility



Note Maps: Latrines were mapped during a REACH assessment in April 2017. The number of shelters within and outside a 50m buffer of the latrines was calculated using spatial analysis. The shelters were mapped by UNOSAT using satellite image analysis.

Note Population Estimate: The estimated population was calculated based on key informants accounts of the number of households per settlement. Average household size was calculated based on the average number of household members in the assessment.