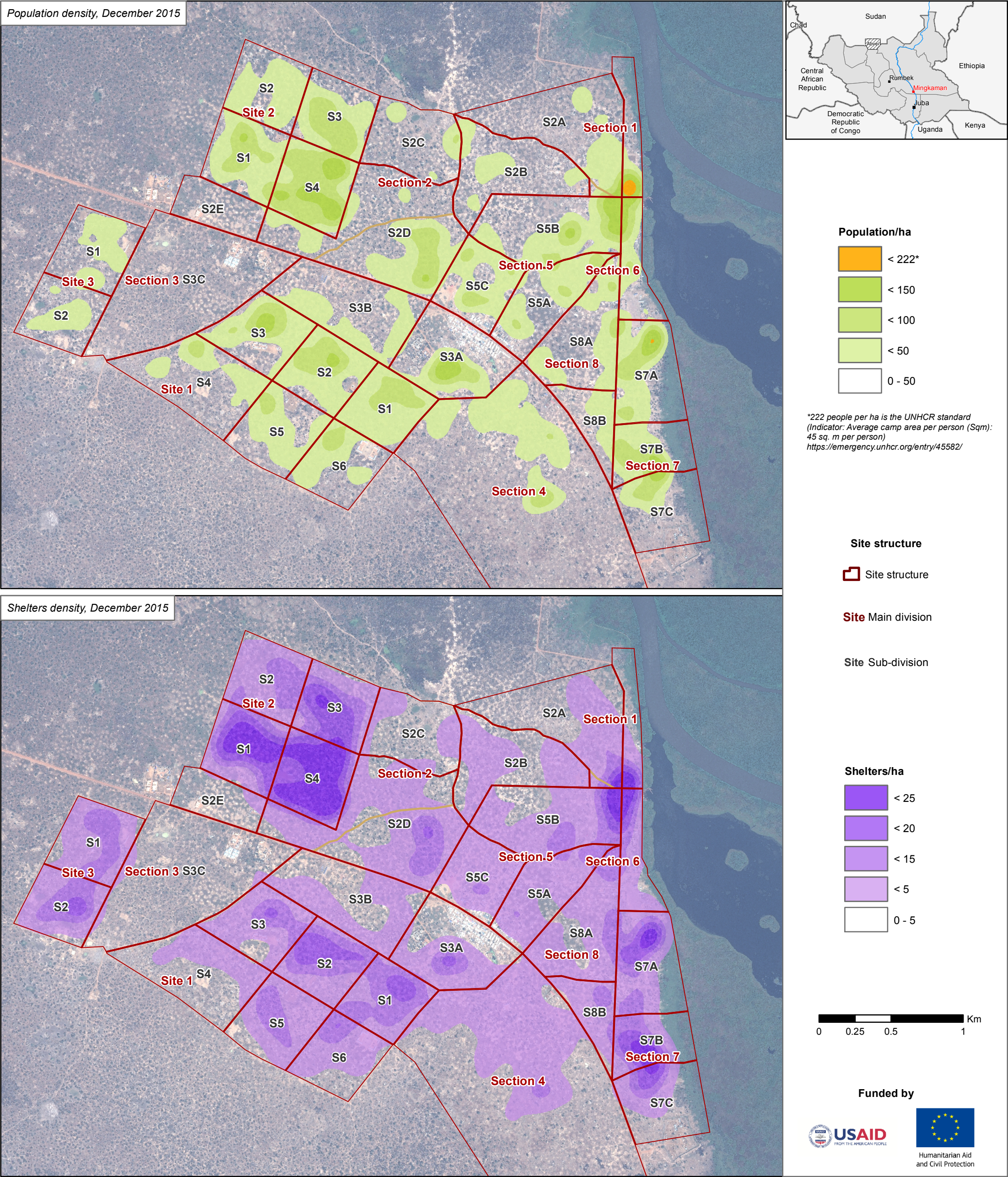


# South Sudan - Lakes State, Awerial County

Population and shelters density in the established site of Mingkaman informal settlement



The Kernel density algorithm has been used to create the maps of population and shelters density in the established site of Mingkaman. Regarding the population density, this technique combines density of occupied shelters and is weighted by the number of households members in December 2015, while the shelters density only uses the location of the shelters. 624 shelters assumed as residential shelters were not assessed due to being vacant at the time of assessment. They have been assigned the average population per shelter of their subsection. The average population per shelter for each subsection of the camp is calculated as follows: total population of the subsection / total residential shelters of the subsection.

Image: ©CNES\_2015, distribution AIRBUS DS, France, all rights reserved, 16.12.2015  
Source: REACH Mingkaman Population Estimate, December 2015  
Coordinate System: WGS 1984 UTM zone 36N  
REACH\_SSD\_Map\_Awerial\_HeatPopMap\_MingkamanSite\_12January2016\_A3  
Contact: south.sudan@reach-initiative.org

Note: Data, designations and boundaries contained on this map are not warranted to be error-free and do not imply acceptance by the REACH partners, associated, donors mentioned on this map.