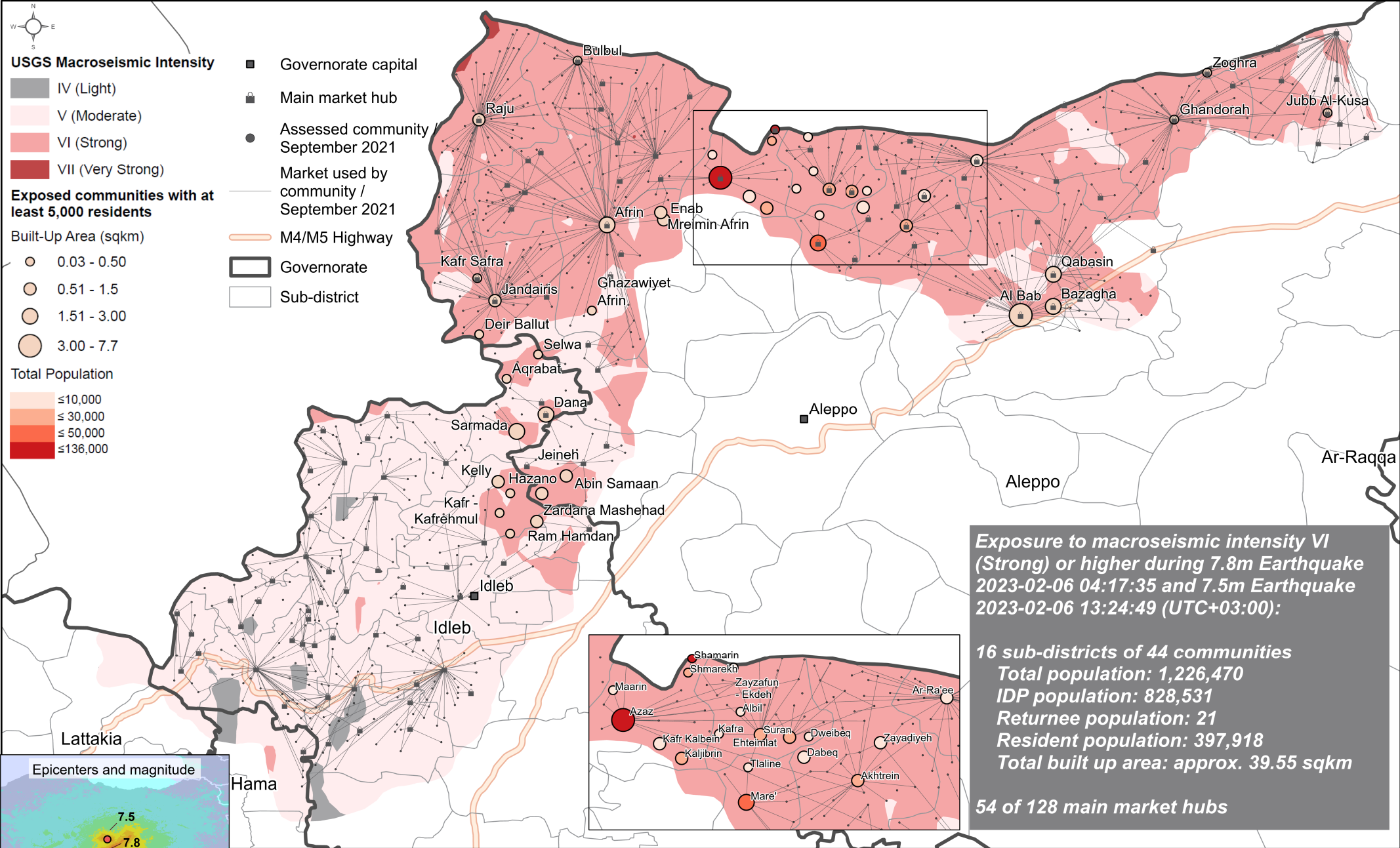


Northwest Syria - Earthquake Exposed Communities and Market Hubs

Macroseismic Intensity VI (Strong) or Higher during 7.8 and 7.5 Magnitude Earthquakes on 6 Feb 2023

For Humanitarian Use Only
Production date : 10 Feb 2023



PERCEIVED SHAKING DAMAGE	Not felt	Weak	Light	Moderate	Strong	Very strong	Severe	Violent	Extreme
PEAK VELOCITY	<17	17-16	1.4-39	3.9-52	9.2-18	18-34	34-65	65-124	>124
PEAK VELOCITY	<0.1	0.1-1.1	1.1-3.4	3.4-8.1	8.1-16	16-31	31-60	60-116	>116
INTEGRATED SEISMICITY INDEX	I	II-III	IV	V	VI	VII	VIII	IX	X

The map shows the highest macroseismic intensity (shake zone) reached during the 7.8 magnitude Earthquake 2023-02-06 04:17:35 UTC+03:00 and 7.5 magnitude Earthquake 2023-02-06 13:24:49 UTC+03:00 in Northwest Syria. Highly populated communities (at least 5,000 residents) and market hubs were identified as exposed if they are located within shake zone VI (Strong) or higher. The Built-Up Area indicator serves as additional information to the population number assuming communities with large built up areas have been particularly affected by the earthquakes. The total population numbers were summed based on the identified exposed communities.

Data sources:

- USGS Macroseismic Intensity ShakeMaps clipped to Northwest Syria
- OCHA administrative boundaries and communities; community population number estimations
- REACH Market network analysis, September 2021
- FAO WaPor gridded Land Cover 2021 100m for built-up area
- ©OpenStreetMap Contributors roads

Note: Data, designations and boundaries contained on this map are not warranted to be error-free and do not imply acceptance by REACH partners, associates or donors mentioned on this map.

Contact: reach.mapping@impact-initiatives.org