



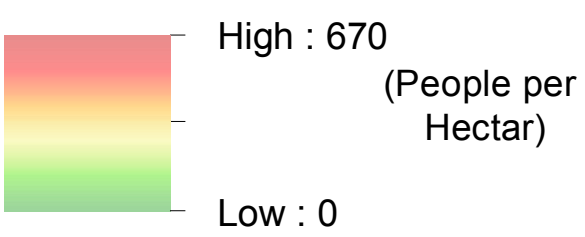
IRAQ - Sulaymaniyah Governorate - Arbat

Population Density – June 2015

For Humanitarian Purposes Only
Production date : 9 August 2015



Population Density



Camp Infrastructure

- Camp Delineation
- Fence
- Office / Facility
- Unoccupied Area
- Entrance
- Water Tank

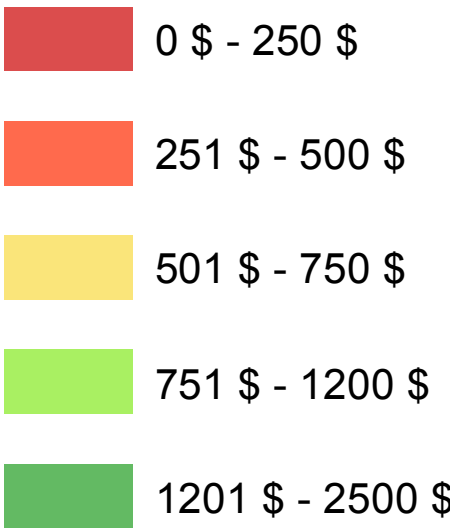
GPS Coordinates of camp location:
Longitude: 45° 36' 33.264" E (45.60924)
Latitude: 35° 22' 30.745" N (35.375207)

Data Source:
Thematic Data: 17 June 2015 REACH
Administrative boundaries: GADM
Background imagery: 02/14/2014 DigitalGlobe
Coordinate System: WGS 1984 UTM Zone 38N
Projection: Transverse Mercator
Contact : iraq@reach-initiative.org
File: IRQ_Map_Basirma_IRQ_Map_Arbat_CampSweepIndicators_17Jun2015

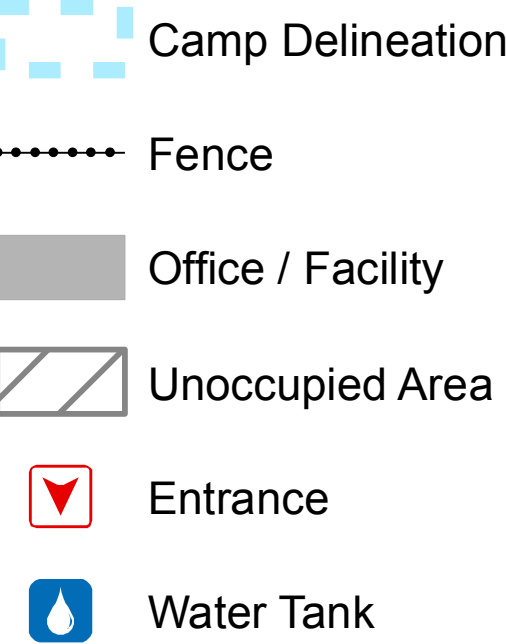
Note: Data, designations and boundaries contained on this map are not warranted to error-free and do not imply acceptance by the REACH partners, associated, donors mentioned on this map.



Monthly Income in USD



Camp Infrastructure



GPS Coordinates of camp location:
Longitude: 45° 36' 33.264" E (45.60924)
Latitude: 35° 22' 30.745" N (35.375207)

Note:
Polygons representing households are generated by the ArcToolbox tool 'Create Thiessen Polygons' using the location recorded at each assessment. The polygons created are a spatial representation of the household area not a defined boundary of a household.

Data Sources:
Thematic Data: 17 June 2015 REACH
Administrative boundaries: GADM
Background imagery: 02/14/2014 DigitalGlobe

Coordinate System: WGS 1984 UTM Zone 38N
Projection: Transverse Mercator
Contact : iraq@reach-initiative.org
File: IRQ_Map_Basima_IRQ_Map_Arbat_

Note: Data, designations and boundaries contained on this map are not warranted to error-free and do not imply acceptance by the REACH partners, associated, donors mentioned on this map.



IRAQ - Sulaymaniyah Governorate - Arbat

Shelter Types – June 2015

For Humanitarian Purposes Only
Production date : 9 August 2015



Shelter Type

- Permanent Shelter
- Tent With Block
- Tent Without Block

Camp Infrastructure

- Camp Delineation
- Fence
- Office / Facility
- Unoccupied Area
- Entrance
- Water Tank

GPS Coordinates of camp location:
Longitude: 45° 36' 33.264" E (45.60924)
Latitude: 35° 22' 30.745" N (35.375207)

Note:
Polygons representing households are generated by the ArcToolbox tool 'Create Thiessen Polygons' using the location recorded at each assessment. The polygons created are a spatial representation of the household area not a defined boundary of a household.

Data Sources:
Thematic Data: 17 June 2015 REACH
Administrative boundaries: GADM
Background imagery: 02/14/2014 DigitalGlobe

Coordinate System: WGS 1984 UTM Zone 38N
Projection: Transverse Mercator
Contact : iraq@reach-initiative.org
File: IRQ_Map_Basima_IRQ_Map_Arbat_

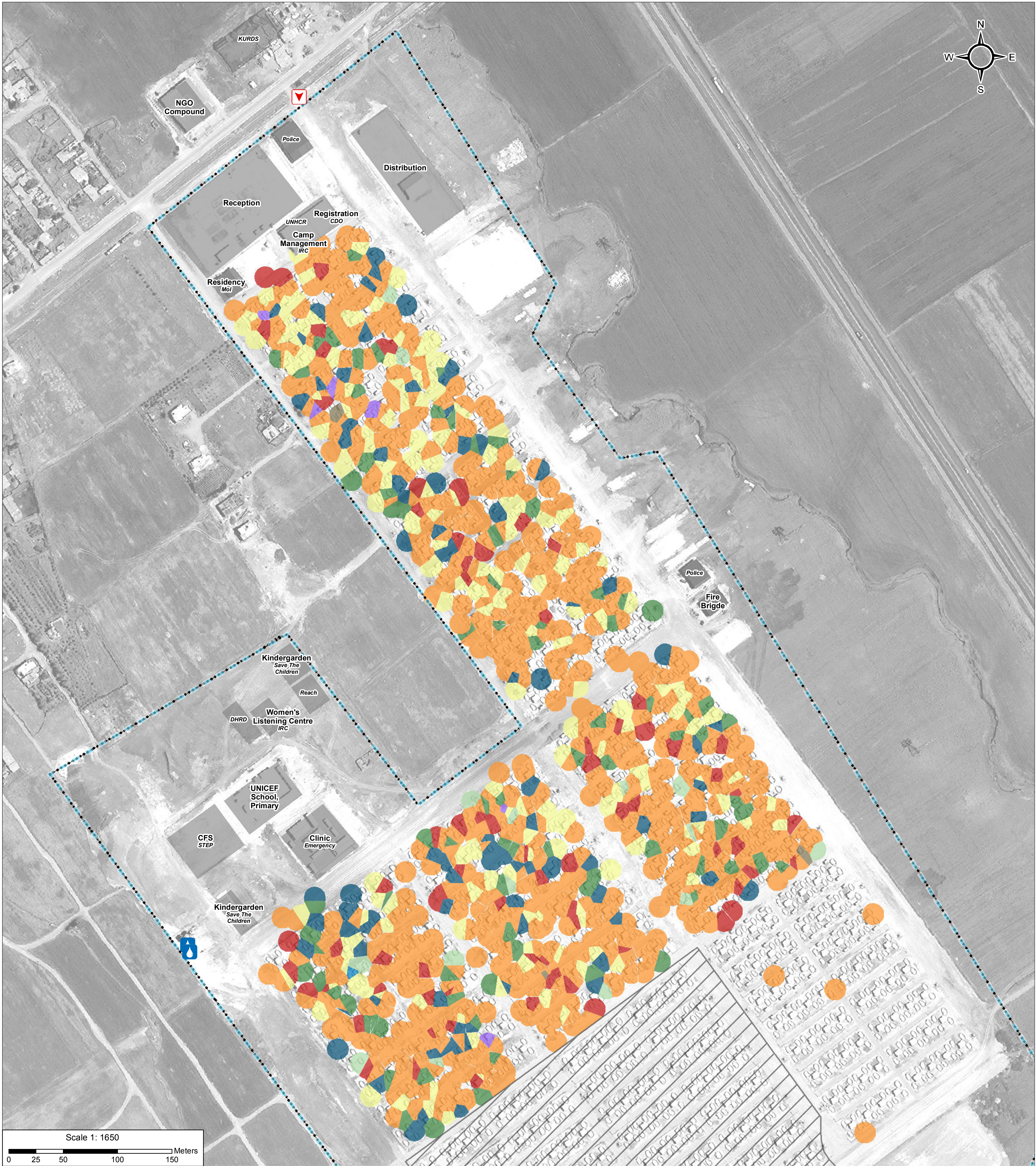
Note: Data, designations and boundaries contained on this map are not warranted to error-free and do not imply acceptance by the REACH partners, associated, donors mentioned on this map.



IRAQ - Sulaymaniyah Governorate - Arbat

Primary Livelihood – June 2015

For Humanitarian Purposes Only
Production date : 9 August 2015



Primary Livelihood

- Cash Remittances
- Food Assistance
- Humanitarian Assistance
- Low Skill Service
- Renting Property
- No Livelihood
- Retail Trade
- Skilled Service Labour
- Trade Vocation

Camp Infrastructure

- Camp Delineation
- Fence
- Office / Facility
- Unoccupied Area
- Entrance
- Water Tank

GPS Coordinates of camp location:
Longitude: 45° 36' 33.264" E (45.60924)
Latitude: 35° 22' 30.745" N (35.375207)

Note:
Polygons representing households are generated by the ArcToolbox tool 'Create Thiessen Polygons' using the location recorded at each assessment. The polygons created are a spatial representation of the household area not a defined boundary of a household.

Data Sources:
Thematic Data: 17 June 2015 REACH
Administrative boundaries: GADM
Background imagery: 02/14/2014 DigitalGlobe

Coordinate System: WGS 1984 UTM Zone 38N
Projection: Transverse Mercator
Contact : iraq@reach-initiative.org
File: IRQ_Map_Basima_IRQ_Map_Arbat_

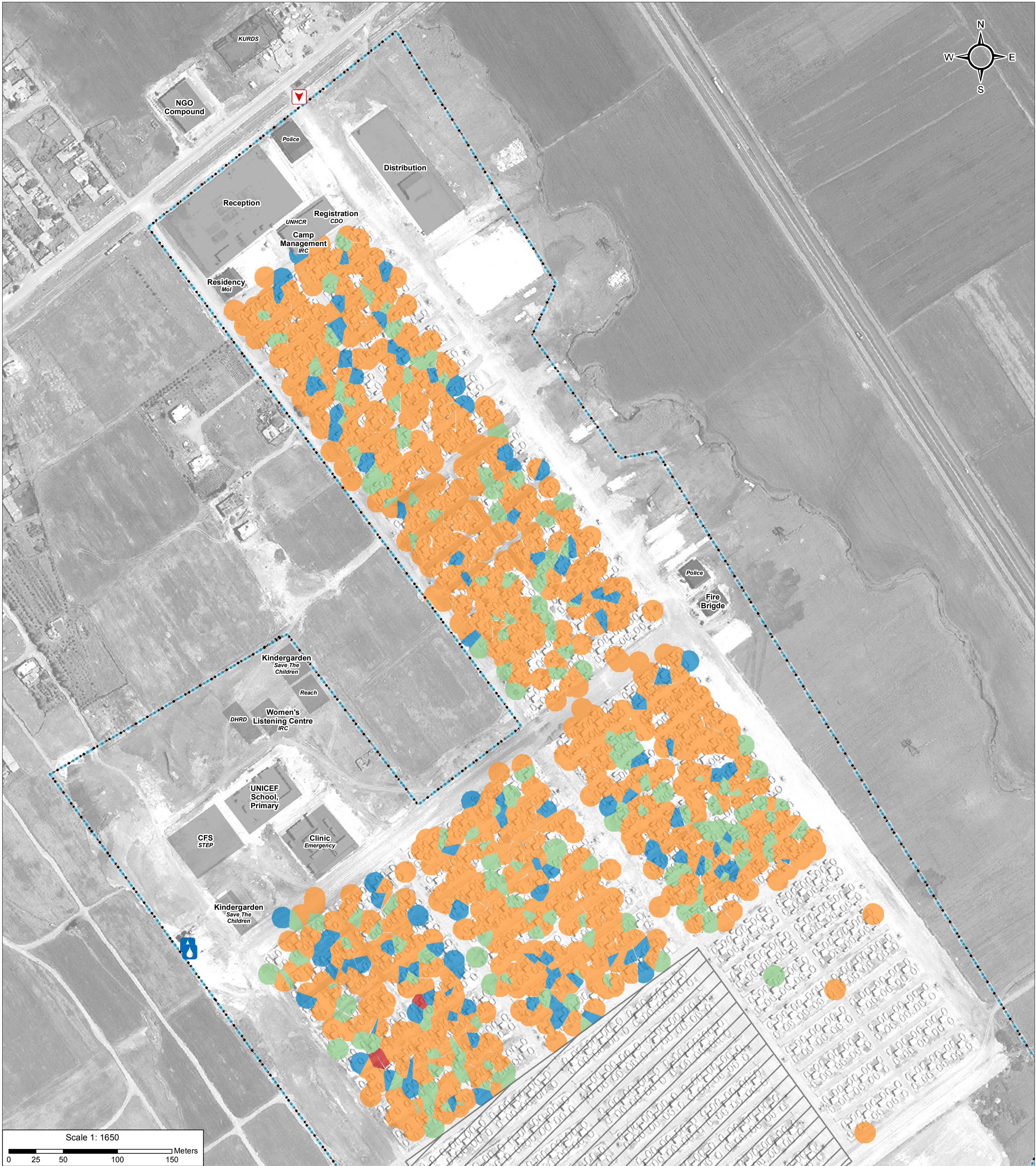
Note: Data, designations and boundaries contained on this map are not warranted to error-free and do not imply acceptance by the REACH partners, associated, donors mentioned on this map.



IRAQ - Sulaymaniyah Governorate - Arbat

Food Security – June 2015

For Humanitarian Purposes Only
Production date : 9 August 2015



Food Security

- Food Secure
- Moderately Food Insecure
- Marginally Food Secure
- Severely Food Insecure

Camp Infrastructure

- Camp Delineation
- Fence
- Office / Facility
- Unoccupied Area
- Entrance
- Water Tank

GPS Coordinates of camp location:
Longitude: 45° 36' 33.264" E (45.60924)
Latitude: 35° 22' 30.745" N (35.375207)

Note:
Polygons representing households are generated by the ArcToolbox tool 'Create Thiessen Polygons' using the location recorded at each assessment. The polygons created are a spatial representation of the household area not a defined boundary of a household.

Data Sources:
Thematic Data: 17 June 2015 REACH
Administrative boundaries: GADM
Background imagery: 02/14/2014 DigitalGlobe

Coordinate System: WGS 1984 UTM Zone 38N
Projection: Transverse Mercator
Contact : iraq@reach-initiative.org
File: IRQ_Map_Basima_IRQ_Map_Arbat_

Note: Data, designations and boundaries contained on this map are not warranted to error-free and do not imply acceptance by the REACH partners, associated, donors mentioned on this map.