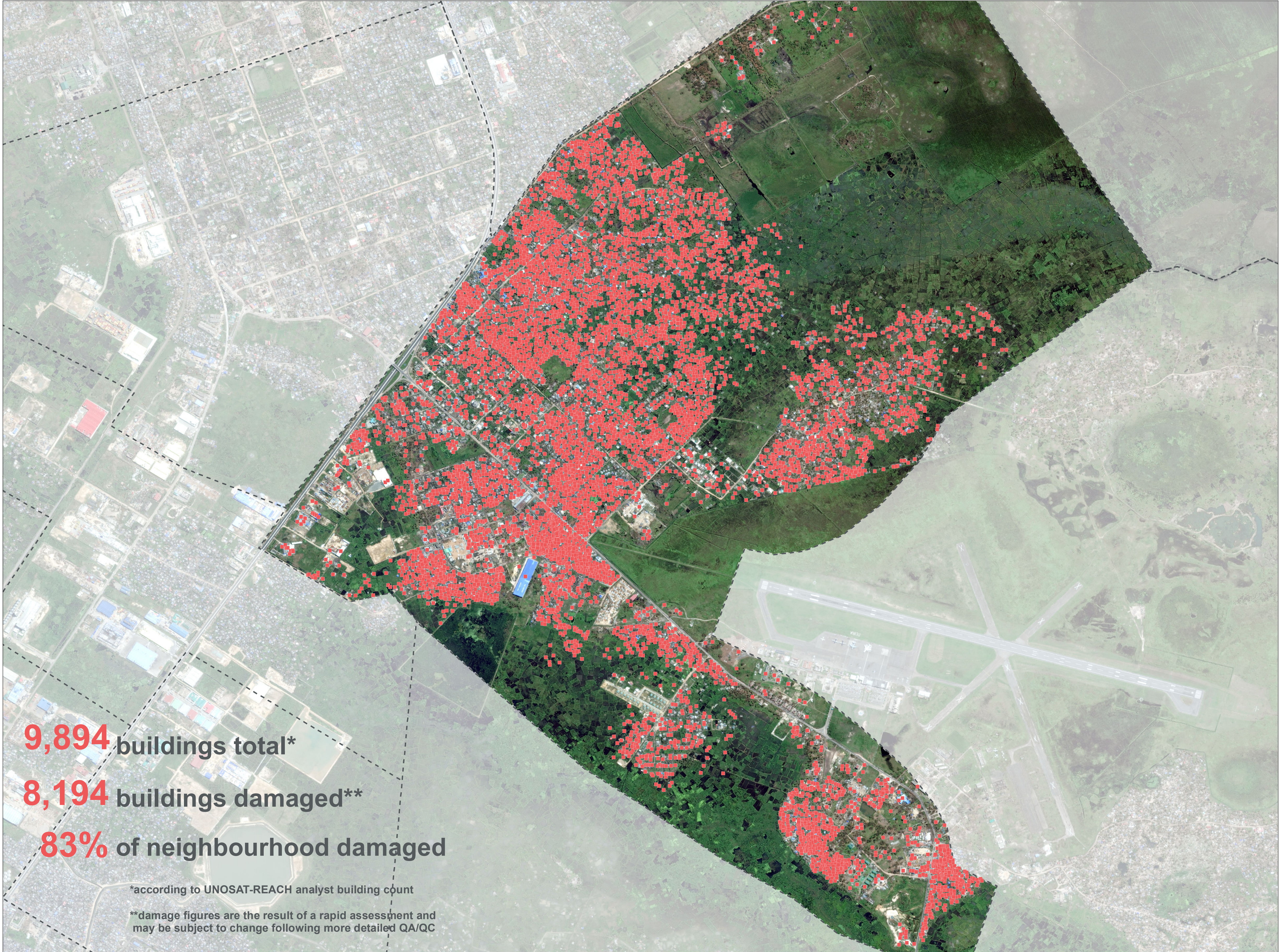


MOZAMBIQUE - Beira City

Manga Mascarenha - Neighbourhood Damage Assessment - As of 26 March 2019

For Humanitarian Purposes Only
Production date : 4 April 2019



9,894 buildings total*

8,194 buildings damaged**

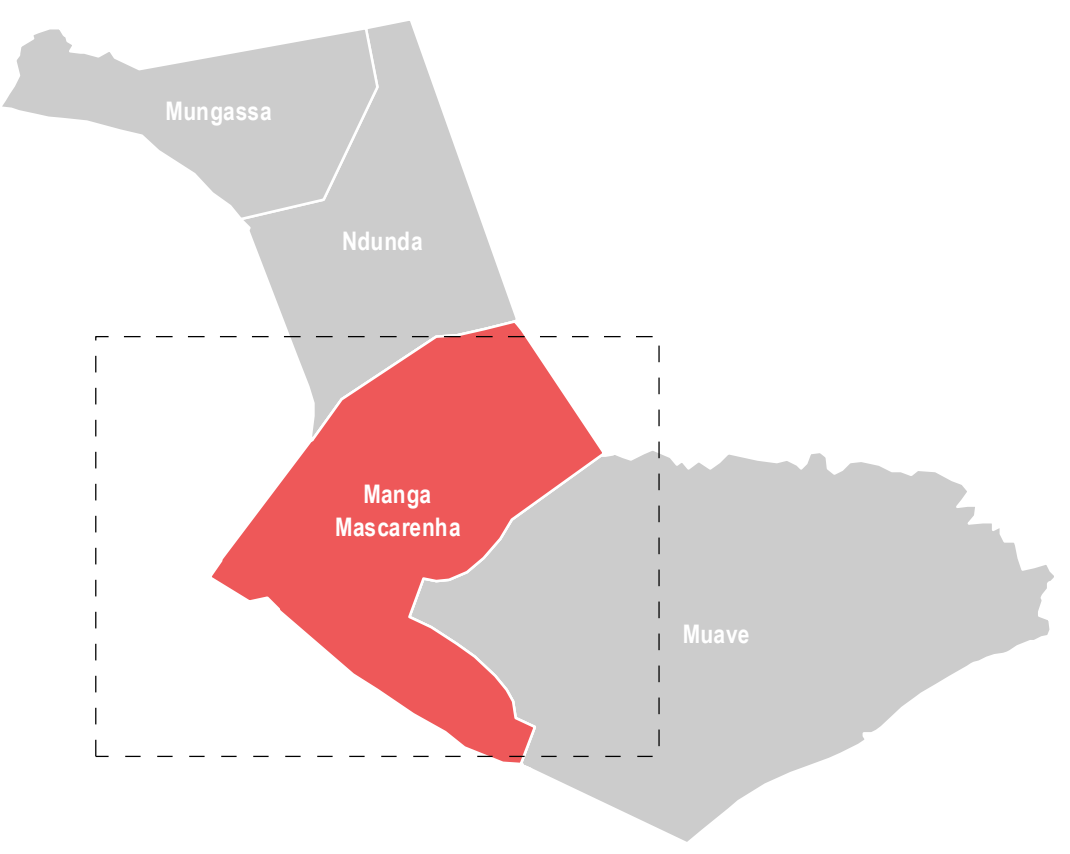
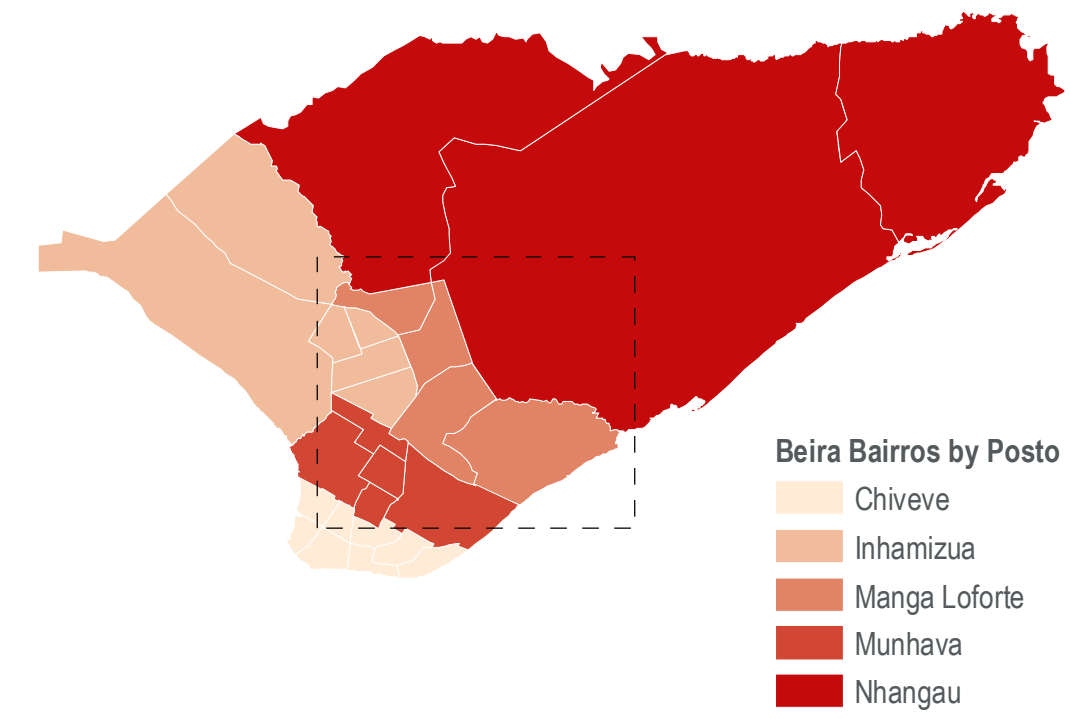
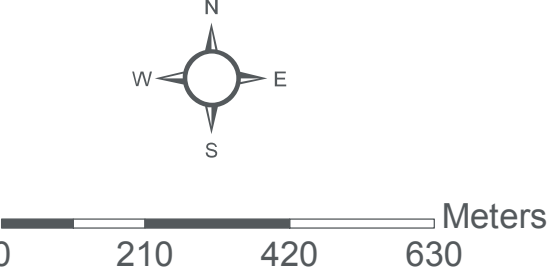
83% of neighbourhood damaged

*according to UNOSAT-REACH analyst building count

**damage figures are the result of a rapid assessment and may be subject to change following more detailed QA/QC

Legend

- Damaged Buildings
- - - - Bairros



Data sources:
Damage sites - UNOSAT-REACH
Beira Bairros - INGC
Administrative Boundaries (0-3) - OCHA
Satellite Imagery: WorldView-2 from 26 March 2019
Copyright: ©DigitalGlobe 2019
Source: US Dept of State Humanitarian Information Unit, NextView License

Coordinate System: GCS WGS 1984
File:
MOZ_Map_CycloneIdai_Beira_Damage_MangaMascarenha_4APR2019
Contact: reach.mapping@impact-initiatives.org

Note: Data, designations and boundaries contained on this map are not warranted to be error-free and do not imply acceptance by the REACH partners, associated, donors mentioned on this map.

