

EARTHQUAKE RESPONSE DISPLACEMENT MONITORING

09 March 2023 | Northwest Syria

KEY FINDINGS*

103,472

IDPs arrived to communities and last resort sites¹ since the first earthquake

47,250

Returnees and cross-border movements to communities since the first earthquake

91

Newly established last resort sites since the first earthquake²

* Indicative figures as of 2 March 2023

CONTEXT & RATIONALE

Two earthquakes hit south-eastern Türkiye on 6 February, with a magnitude of 7.7 and 7.6, respectively. In Northwest Syria, in addition to the 4,500 deaths reported to date, widespread displacement has been observed as a result of the earthquake.³ At the same time there are reports of significant numbers of returnees arriving from outside Syria.⁴ Displacement movements after the earthquake are complex and often temporary in nature. Whilst some households are displaced as a result of the direct damage, others may be visiting family or seeking better access to services or humanitarian assistance. In addition, displacement within communities has been reported with affected households residing outside of their homes.⁵

In the aftermath of the earthquakes reliable information is required on displacement movements, and where new IDPs (internally displaced persons) are located. REACH's rapid displacement monitoring assessment provides an understanding of displacement between communities. To provide a more comprehensive overview this data has been combined with the CCCM (Camp Coordination and Camp Management) Cluster and partners data on new last resort sites, and on IDP arrivals to pre-existing sites.

¹ Last resort sites include: planned camps, self-settled camps, reception centres, temporary sites and collective centres. Only IDPs that arrived since the first earthquake, and still resided in the community/site were included.

² There may be last resort sites established since the earthquake, that were unknown as of 2 March 2023, and have been excluded from this data.

³ OCHA (March 4, 2023). [North-West Syria Situation Report](#)

⁴ UNHCR Türkiye (March 3, 2023) [Emergency Response to Earthquake](#)

⁵ REACH and NWS NGO Forum (February 15, 2023) [Rapid Needs Assessment Situation Overview](#)

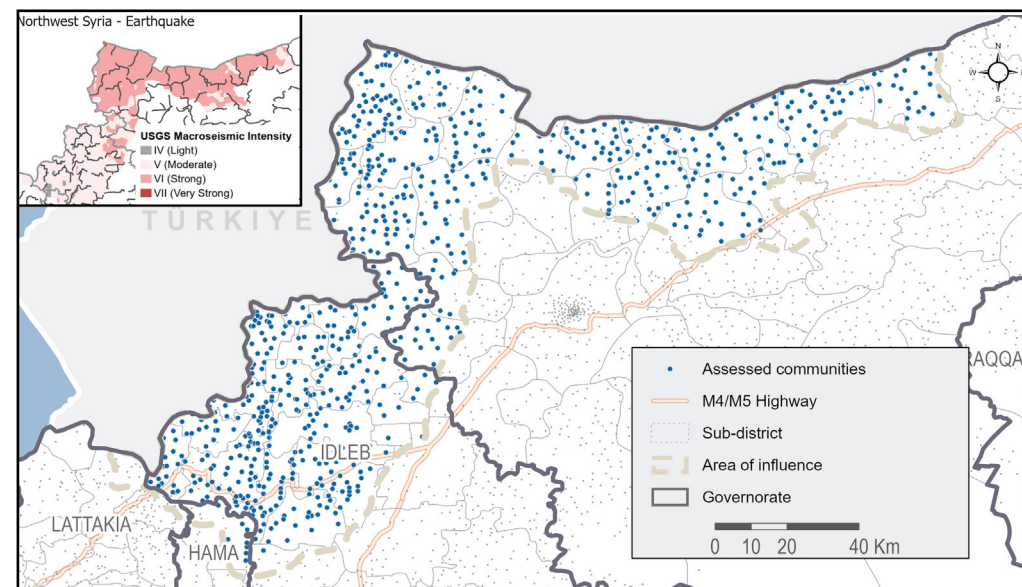


METHODOLOGY OVERVIEW

This situation overview presents the data gathered through a Community Displacement Monitoring Assessment, conducted by REACH using a key informant (KI) methodology. REACH enumerators based in Idlib and enumerators based in Northern Aleppo interviewed 1 KI per community, either in-person or remotely. KIs were selected based on their knowledge on displacement. **Data was collected from 797 communities, between 28 February- 4 March 2023**, on IDP and returnee movements and new last resort sites in or near the community. As a result of the KI methodology all figures are indicative only, and should be interpreted with caution.

To provide a more comprehensive overview of displacement, data from the CCCM Cluster and partners has also been presented. This includes data from **2 March 2023**, on new arrivals to the **1,439 last resort sites** that existed prior to the earthquake, and on **91** newly established last resort sites.

MAP 1: COMMUNITY COVERAGE For REACH's Rapid community displacement assessment



WHERE DOES THE DATA COME FROM AND WHAT DOES IT INCLUDE?

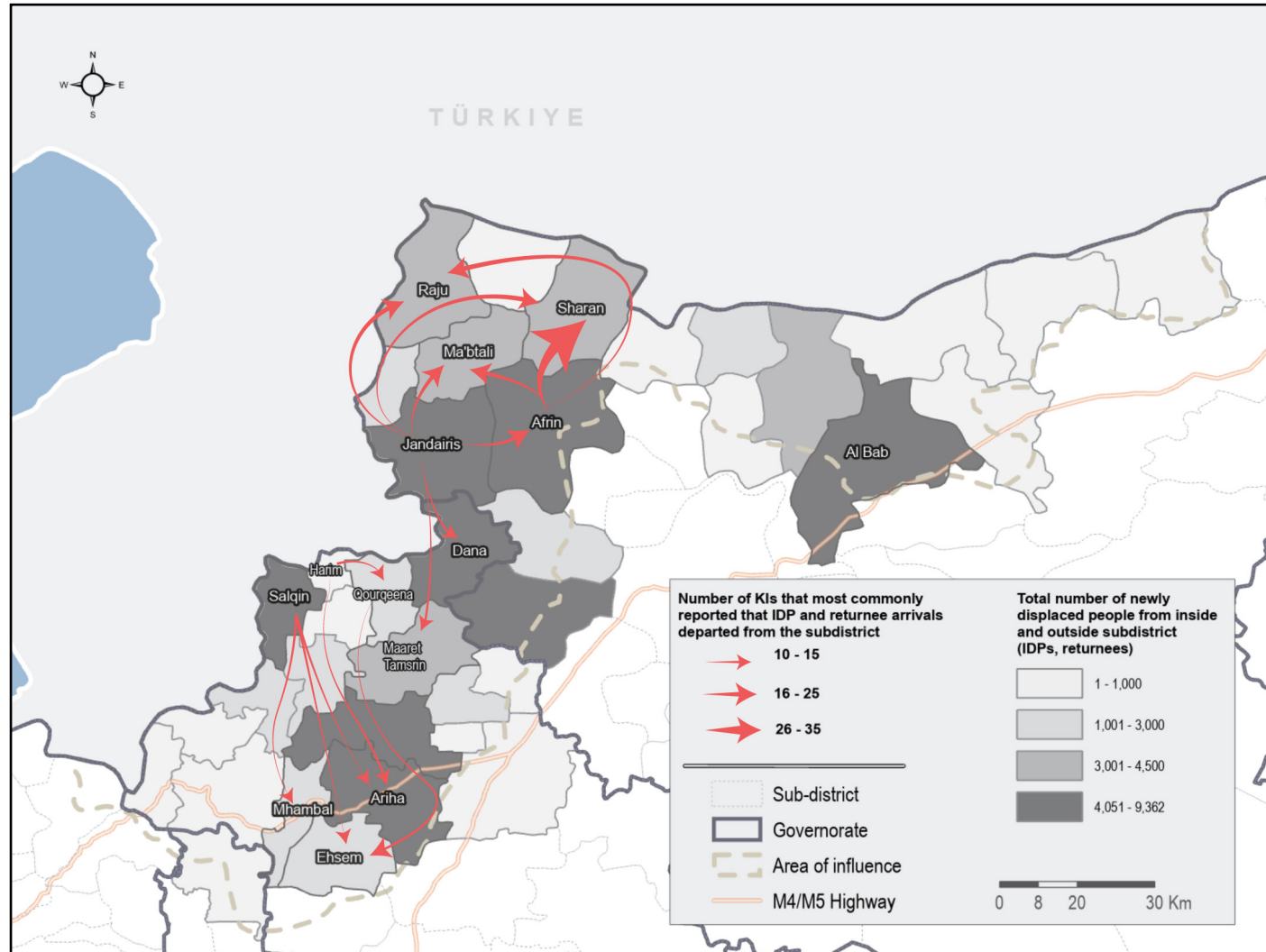
Research question	Indicators	Source of data
What is the movement of people between and within subdistricts?	Most common departed from sub-districts for IDPs and returnees that arrived to assessed communities	REACH rapid community displacement assessment
	Number of newly displaced people arrived from inside and outside the sub-district	REACH rapid community displacement assessment
What is the number of IDP arrivals since the first earthquake, and where are they?	IDPs arrived to assessed communities	REACH rapid community displacement assessment
	IDPs arrived to pre-existing last resort sites	CCCM Cluster ISIMM in last resort sites
Where are the newly established last resort sites , since the first earthquake, and how many people are in them?	Newly established last resort sites	CCCM Cluster Tracking the reception centers & IDP Sites for earthquake response
What is the cross border movement and number of returnees since the first earthquake, and where are they?	Returnees to assessed communities from inside Syria	REACH rapid community displacement assessment
	Cross border movements into Syria	REACH rapid community displacement assessment
Is there displacement within communities , since the first earthquake?	Assessed communities reporting residents displaced within their own community	REACH rapid community displacement assessment

Definition	Limitations
IDP arrivals: IDPs that have arrived to the assessed location after the first earthquake, and are in the assessed location at the time of data collection.	Figures may include IDPs that arrived to newly established last resort sites, if they are located inside communities or pre-existing sites. Figures do not include displacement within communities.
Newly established last resort sites: sites established since the earthquake and that were open as of the date reported. Last resort sites include: planned camps, self-settled camps, reception centres, temporary sites and collective centres.	The situation in newly established last resort sites is changing on a daily basis, including the opening and closing of sites, resulting in fluctuating figures.
Returnees: people who were previously residents and have come back since the earthquake, and are in the assessed location at the time of data collection. Cross-border movements into Syria: people who were previously residents and have come back since the earthquake, from outside of Syria, and are in the assessed location at the time of data collection.	Only cross border movements and returnees that have arrived in assessed communities have been included.
Displacement within communities: This refers to the resident population that is not currently residing in their home, but who remain in the same community as prior to the first earthquake.	Displacement within communities, can take a variety of forms and may include night-time only displacement. KI estimates may be less accurate.

ARRIVALS AND MOVEMENT OF PEOPLE BETWEEN SUB-DISTRICTS

MAP 2: ARRIVALS SINCE THE FIRST EARTHQUAKE, AND MOST COMMON DEPARTED FROM SUB-DISTRICTS

As reported by KIs in assessed communities



33% Of KIs reported their own sub-district as a top three sub-district of departure, (as reported by the KIs in the 474 communities who received IDP arrivals and/or returnees)

Most commonly reported push factors by KIs for new IDP arrivals and returnees,⁶ (as reported by KIs in the 474 communities that received new IDP arrivals and/or returnees)

1	House damaged or destroyed	32%
2	Feel unsafe due to the earthquake	32%
3	Reduced access to food	14%

Most commonly reported pull factors by KIs for new IDP arrivals and returnees,⁶ (as reported by KIs in the 474 communities that received new IDP arrivals and/or returnees)

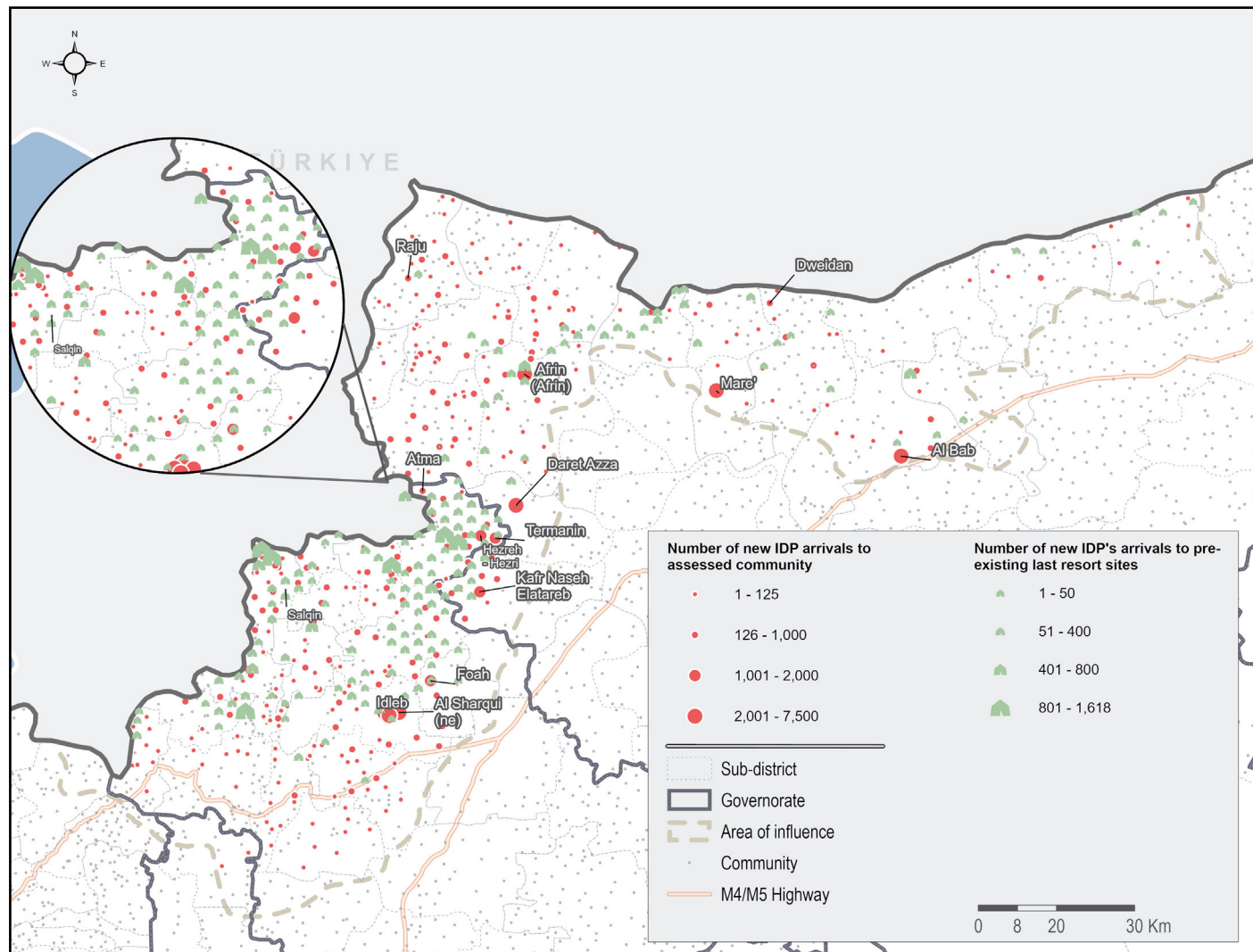
1	Family ties or relationship with host community	29%
2	Location less impacted by the earthquake	24%
3	Location perceived as being more secure or less affected by conflict	21%

⁶ KIs were asked to select a first, second, and third most common push and pull factor in their communities. The ranking shows the push/pull factor most frequently chosen as either first, second or third most common, by both IDP arrivals and returnees.

IDP ARRIVALS

MAP 3: NUMBER OF IDPS REPORTED TO HAVE ARRIVED IN COMMUNITIES AND LAST RESORT SITES, SINCE THE FIRST EARTHQUAKE

As reported by KIs in assessed communities and CCCM partners



103,472* IDPs arrived, to communities, and pre-existing last resort sites⁷ (as reported by KIs in assessed communities and CCCM partners)

IDP arrivals in communities and last resort sites (as reported by KIs in assessed communities and CCCM partners)

	Total IDP arrivals since the earthquake	Number of sites with IDP arrivals
Assessed communities ⁸	78,998	357
Pre-existing last resort sites ⁹	24,474	336

Figures may include IDPs that arrived to newly established last resort sites, if they are located inside communities or pre-existing sites.

Figures do not include displacement within communities.

⁷ Only IDPs that arrived since the first earthquake, and still resided in the community/site as of data collection were included.

⁸ Communities assessed for REACH's rapid community displacement assessment

⁹ 1,439 Last resort sites assessed for CCCM Cluster's IDP Sites Integrated Monitoring Matrix (ISIMM) assessment

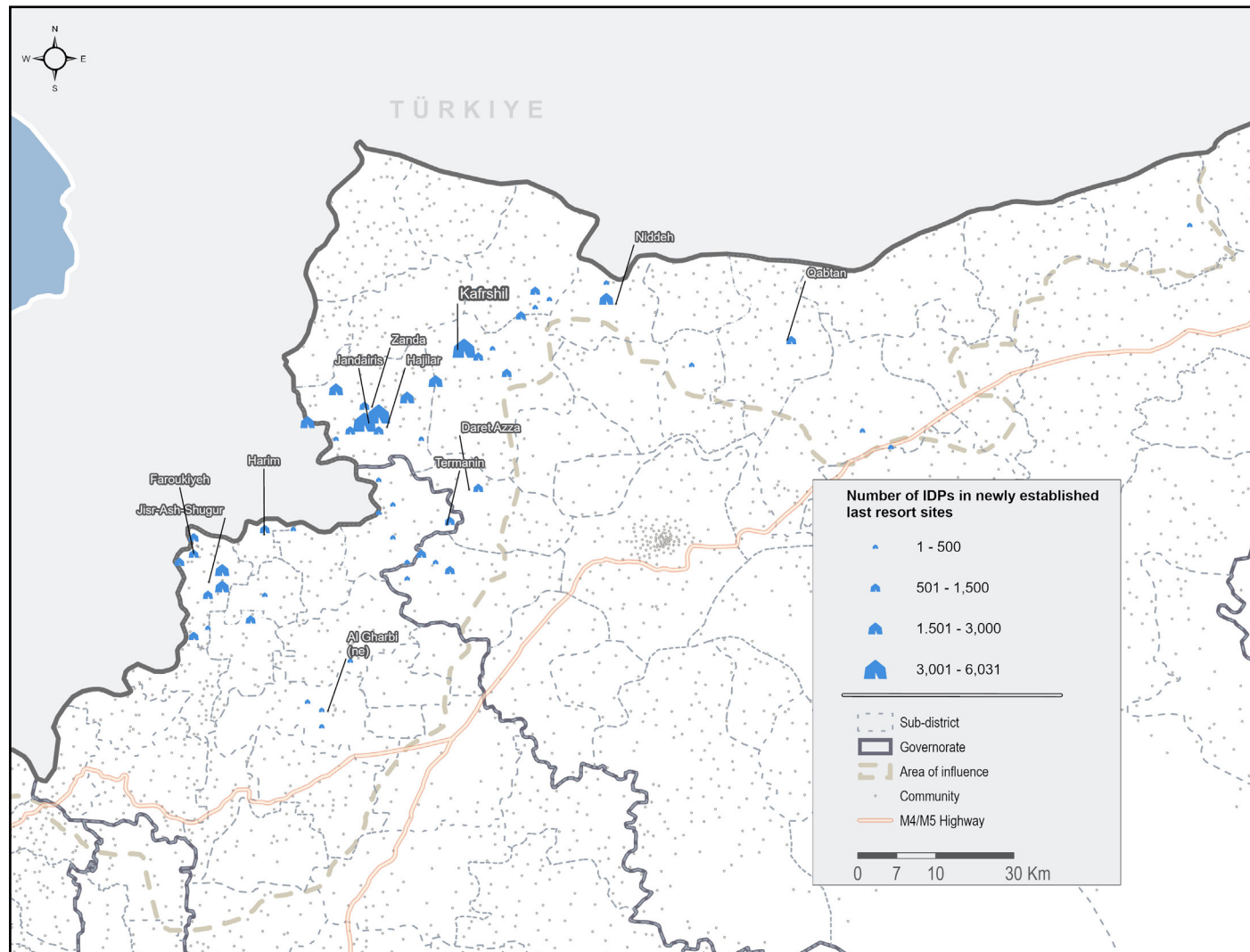
¹⁰ Sites have been aggregated using a hexagonal grid of 5km²

* Indicative figures as of 2 March 2023

NEWLY ESTABLISHED LAST RESORT SITES

MAP 4: IDPS IN NEWLY ESTABLISHED LAST RESORT SITES, SINCE THE FIRST EARTHQUAKE

As reported by KIs in assessed communities and CCCM partners



57,149* Displaced individuals

In 91*

newly established last resort sites since the first earthquake¹¹

(As reported by CCCM partners)

The situation in newly established last resort sites is changing on a daily basis, including the opening and closing of sites, resulting in fluctuating figures. The reported figure reflect the known situation as of the 2 March 2023.

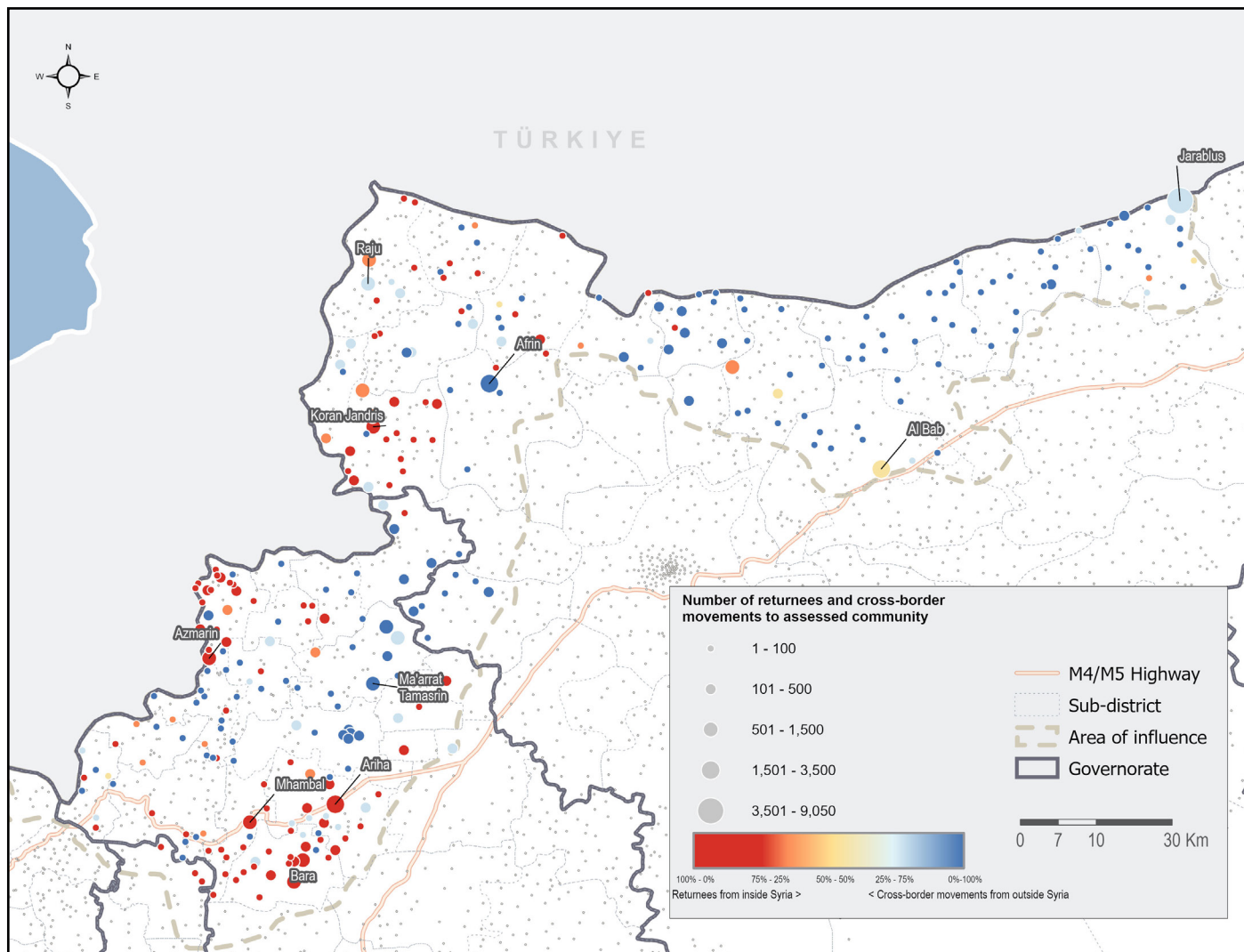
¹¹ There may be last resort sites established since the earthquake, that were unknown as of 2 March 2023, and have been excluded from this data. Figures include data from CCCM's 'Tracking the reception centers & IDP Sites for earthquake response' dataset

¹² Sites have been aggregated using a hexagonal grid of 5km²

RETURNEES AND CROSS-BORDER MOVEMENTS

MAP 5: RETURNEES AND CROSS-BORDER MOVEMENTS, SINCE THE FIRST EARTHQUAKE

As reported by KIs in assessed communities



17,517*

Returnees¹³ that are currently in communities and arrived since the earthquake (as reported by KIs in assessed communities).

29,733*

Cross-border movements¹⁴ that are currently in communities and arrived since the earthquake (as reported by KIs in assessed communities).

Only cross border movements and returnees that have arrived in assessed communities have been included.



¹³ Only returnees that arrived since the first earthquake, and still resided in the community as of data collection were included
¹⁴ Only cross-border movements since the first earthquake, and still resided in the community as of data collection were included

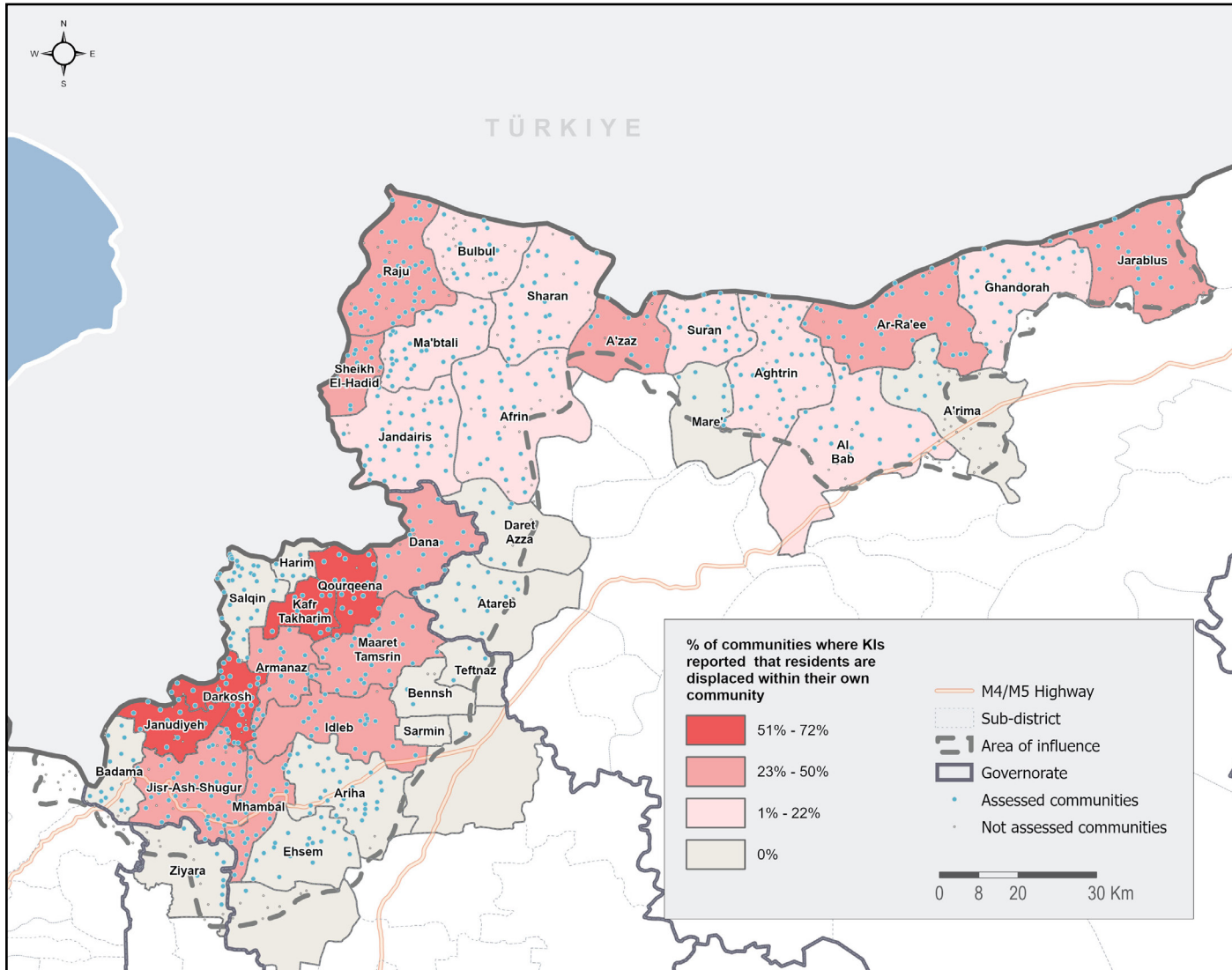
* Indicative figures as of 2 March 2023



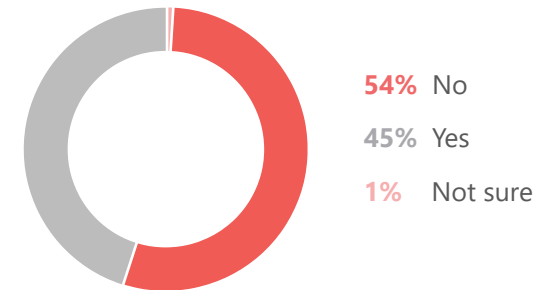
DISPLACEMENT WITHIN COMMUNITIES

MAP 6: PROPORTION OF KIs REPORTING THAT RESIDENTS ARE DISPLACED WITHIN THEIR OWN COMMUNITY, SINCE THE FIRST EARTHQUAKE

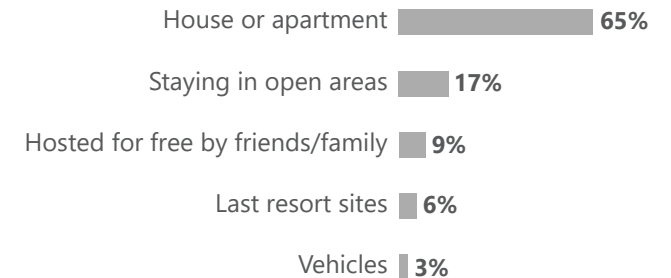
As reported by KIs in assessed communities



Proportion of KIs reporting that residents are displaced within their own community¹⁴ (as reported by KIs in assessed communities)



Average proportions of households in different occupancy types across assessed communities¹⁵ (as reported by KIs in assessed communities)



Displacement within communities, can take a variety of forms and may include night-time only displacement. KI estimates may be less accurate.



¹⁴ Residents displaced within their own community, refers to the population that are not currently residing in their home, but who remain in the same community as prior to the first earthquake

¹⁵ KIs were asked for proportions due to the limitations in estimating absolute figures for this indicator