

Research Terms of Reference

Port Monitoring

Research Cycle ID: SSD1708

South Sudan

September 2019

Version 2.0

REACH Informing
more effective
humanitarian action

1. Executive Summary

Country of intervention	South Sudan					
Type of Emergency		Natural disaster	X	Conflict		Emergency
Type of Crisis		Sudden onset		Slow onset	X	Protracted
Mandating Body/ Agency	REACH					
Project Code	32DAF (32iAED), 32DDM (32iAEK)					
REACH Pillar	X	Planning in Emergencies	X	Displacement		Building Community Resilience
Research Timeframe <i>Repeated on a monthly basis</i>	1. Start collect data: First day of the research cycle (beginning of the month)			4. Data sent for validation: Fourth working day of the next month		
	2. Data collected: First to the last day of the month			5. Outputs sent for validation: Sixth working day of the next month		
	3. Data analysed: First four working days of the next month			6. Outputs published: Second week of the next month		
General Objective	To support evidence-based and targeted response planning through providing detailed information on regional migration, displacement and return of South Sudanese crossing key transit locations.					
Specific Objective(s)	1. To provide up-to-date information on the demographics and number of households/individuals that are leaving and entering key transit locations to identify the scale of displacement trends. 2. To identify potential triggers for displacement by providing information on the cross-sectoral push and pull factors for movement at the household/individual level, as well as information on next destination, intentions and vulnerabilities of those moving. 3. To map main internal and cross-border movement dynamics.					
Research Questions	<ul style="list-style-type: none">What is the demographic make-up of those moving and how many individuals/households are travelling?What are the key routes (previous location and desired next location) used by those moving, including whether movement from/to a settlement, Protection of Civilian (PoC) site in South Sudan or a refugee camp outside South Sudan occurs?What means of transport are used by those moving?What are the push and pull factors for movement from the previous location and movement to the desired next destination?What are the vulnerabilities of those moving?					

	<ul style="list-style-type: none">How long do those moving intend to stay at their next destination?				
Research Type	x	Quantitative		Qualitative	Mixed methods
Geographic Coverage	Nyal (Unity State), Akobo (Jonglei State), Renk and Maban (Upper Nile State), Yambio (Western Equatoria), Kapoeta (Eastern Equatoria)				
Target Population(s)	IDPs, asylum seekers, returnees (former refugees)				
Data Sources	Secondary Data: <ul style="list-style-type: none">IOM DTM¹UNHCR situational updates (i.e. Uganda Response Portal, bi-weekly Gambella Infographic etc.)REACH Assessment of Hard to Reach Areas AoKOCHA / WFP humanitarian needs overviews / situation reportsOnline media sources (Sudan tribune, Radio Tamazuj etc.) Primary Data: Port monitoring household survey. Transport Focal Point Key Informant Survey				
Expected Outputs	<ul style="list-style-type: none">Monthly port monitoring factsheets from each assessed location (6 in total per month).				
Key Resources					
Humanitarian Milestones	Milestone		Timeframe		
	X	CCCM Cluster plan/strategy	REACH has weekly presence in meetings and shares port monitoring data with CCCM Cluster contributing to informing the cluster's out of camp strategy		
	X	ICWG / OCHA / IOM	REACH has weekly presence in meetings and monthly presentations to share monthly trends, including from port monitoring. Port monitoring data also contributes to the monthly OCHA-led IDP count meeting and is shared with IOM DTM whose Flow Monitoring component tracks movement flows of groups and individuals through key points of origin, transit locations and points of destination. ¹		
		Donor plan/strategy			
	x	NGO Coordination Forum	REACH will seek to present findings on a monthly basis to ensure findings feed into more operational decisions		
		Other			
Audience	Audience type		Specific actors		
	x	Operational	x Cluster Mailing (Education, Shelter and WASH) and presentation of findings at next cluster meeting		
	x	Programmatic			
		Strategic	x Presentation of findings (e.g. at HCT meeting; Cluster meeting)		
		Other			

¹ Please see IOM DTM: PoC and Collective Sites Flow Monitoring, Key Highlights, 16-22 January 2018.

https://reliefweb.int/sites/reliefweb.int/files/resources/26.%20Flow%20Monitoring%20Weekly%20Report_28%20Feb%202018.pdf

			x Website Dissemination (Relief Web & REACH Resource Centre) x AO sharing of settlement level data at the sub-national coordination forum
Access	x	Public (available on REACH resource centre and other humanitarian platforms, such as ReliefWeb)	
		Restricted (bilateral dissemination only upon agreed dissemination list, no publication on REACH or other platforms)	
		Other (please specify)	
Visibility		USAID, SDC and REACH	
Dissemination		The information will be disseminated through the REACH mailing list, presentations at cluster meetings at the state and national level, and products will be able available through public sources, such as the REACH Resource Centre and ReliefWeb.	

2. Background & Rationale

South Sudan enters its fourth year of political crisis, stemming from violent conflict erupting in Juba in December 2013. The dynamic and multi-faceted nature of the South Sudanese displacement crisis has created significant challenges for humanitarian information management. Accessibility and security issues within South Sudan have impeded systematic data collection efforts, limiting the effectiveness of humanitarian planning and implementation, whilst displacement within and out of South Sudan remains highly dynamic, with 1.9 million South Sudanese internally displaced and 2 million seeking refuge in neighbouring countries.² As the crisis continues to evolve, it is becoming increasingly important to fill information gaps in a systematic manner to promote more effective humanitarian response and planning for immediate life-saving activities and contingency planning for durable solutions.

To monitor critical displacement trends within South Sudan as well as to neighbouring countries, REACH conducts direct face-to-face quantitative household interviews with purposively sampled IDPs/asylum seekers/returnees in key transit locations (port and road locations) inside South Sudan who are either leaving or entering a transit site. In April 2016, REACH started collecting port monitoring data in Akobo, Jonglei State with port monitoring set up in Nyal, Unity State, in August 2016. Since then, REACH has expanded port monitoring data collection to Yambio (Western Equatoria State), Maban, Renk (Upper Nile) and Kapoeta (Eastern Equatoria). Data collection occurs throughout the month, with each transit location uses the same quantitative survey tool, capturing key information on the scale (average number of daily arrivals / departures) and demographics of those moving, main displacement routes as well as the push and pull factors and intentions for movement. To allow for trend analysis, specific locations and time-frames for data collection have been selected, maximising the number of arrivals and departures captured and the maintained constant each month to ensure trends captured are indicative of broader movements. Comparable information across each location will allow for broader analysis across South Sudan on internal movement and hotspots for migration into and out of the country. To ensure this data is directly informing humanitarian response planning, data is shared through formal coordination structures, such as OCHA, the ICWG, relevant clusters as well as IOM, which captures other key transit sites in South Sudan through its Flow Monitoring activity.

² OCHA South Sudan, Humanitarian Bulletin Issue 01, 18 January 2018.

3. Research Objectives

To support evidence-based and targeted response planning through providing detailed information on regional migration, displacement and return of South Sudanese crossing key transit locations. More specifically, to: -

- To provide up-to-date information on the demographics and number of households/individuals that are leaving and entering key transit locations to identify the scale of displacement trends.
- To identify potential triggers for displacement by providing information on the cross-sectoral push and pull factors for movement at the household/individual level, as well as information on next destination, intentions and vulnerabilities of those moving.
- To map main internal and cross-border movement dynamics.

4. Research Questions

- What is the demographic make-up of those moving and how many individuals/households are travelling?
- What are the key routes (previous location and desired next location) used by those moving, including whether movement from/to a settlement, Protection of Civilian (PoC) site in South Sudan or a refugee camp outside South Sudan occurs?
- What means of transport are used by those moving?
- What are the push and pull factors for movement from the previous location and movement to the desired next destination?
- What are the vulnerabilities of those moving?
- How long do those moving intend to stay at their next destination?

5. Methodology

5.1 Methodology Overview

To identify critical displacement trends into, out of and within South Sudan, using a standardised survey REACH collects primary data on displacement trends from purposively sampled IDPs/asylum seekers/refugees arriving at or departing from key transit locations. The quantitative survey gathers information at the household level and as of February 2018, IOM DTM and REACH have standardised respective Flow Monitoring and Port Monitoring tools. REACH port monitoring data is collected on a monthly basis, with data collection starting on the first and ending on the last day of the month to ensure that all potential days of movement to/from a transit site are captured and to allow for broader movement trend analysis across time. In addition, this assessment uses secondary data in order to triangulate the collected data.

The Port and Road Monitoring Household Survey does not purport to capture all movements of households and, as such, does not allow to estimate total absolute numbers of arrivals and departures. Enumerators are usually able to interview all travelling HHs when there are three to four households or less moving together, though it does require some households to wait in the transit site in order to be interviewed. However, in instances where there are large numbers of individuals/ household in one movement, the enumerators are not able to interview all of these HHs as the number of enumerators is finite and many households have moved on after the enumerators have conducted their first 15-minute interviews with individual HHs. In order to better capture the number of individuals travelling in larger movements that cannot be fully captured via the household survey³, since July 2019, REACH has also started collecting primary data on displacement trends from purposively sampled individuals managing the transport type arriving at or departing from key transit locations using the Transport Focal Point (TFP) tool. These transit locations are the existing PRM data collection sites, previously identified as key locations for movement in all settlements where PRM is conducted. Therefore, enumerators have pre-existing connections with individuals running the transport agencies and the transportation drivers in these areas.

³ In instances where the population movements are too large to be captured by interviewing each individual household.

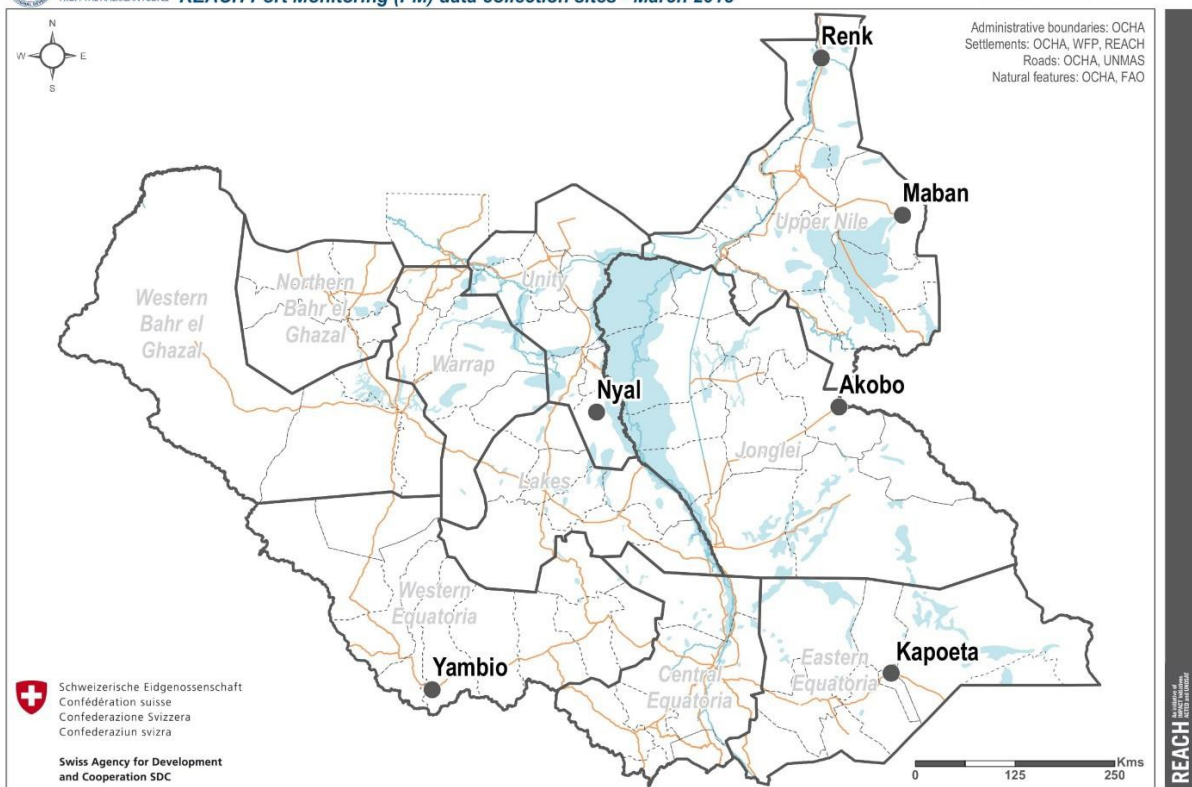
The short quantitative TFP survey gathers information from the KI to inquire exact numbers of individuals travelling on the vehicle that they are managing, as well as capturing key indicators such as previous or intended destination of the vehicle, and the length of the travel. Following the use of the TFP tool, enumerators can then use the standard PRM tool to collect information from a purposive sample of households, in order to capture more detailed information such as push/ pull factors and key protection concerns. Similar to the PRM tool, data collection will start on the first and end on the last day of the month to ensure that all potential days of movement are captured.

5.2 Population of Interest

This assessment focuses on South Sudanese who arrive at or depart from a key transit location and who are either: i) internally displaced (IDPs), ii) populations crossing a transit location to claim asylum in a neighbouring country or who returned to South Sudan from a refugee camp or informal settlement in a neighbouring country. The data captures the household travelling but also the amount of individuals travelling within the household.

As of March 2018, key transit locations have been selected due to their volume of population movement and accessibility and are often located in proximity to border crossing points. An exception to this is the Nyal port monitoring point, located in Southern Unity in central South Sudan, focusing on capturing internal displacement. The locations of the port monitoring locations can be seen below in Map 1. In all port monitoring locations, REACH also conducts the Assessment of Hard to Reach Areas.

The second survey (TFP tool) focuses on Key Informants who manage the transportation (such as bus drivers, boat conductor, car owner) of individuals/households from a key transit location. The tool will better capture the number of households as well as the number of individuals moving in large groups.



Map 1 - REACH Port Monitoring data collection sites as of March 2018

5.3 Secondary Data Review

Secondary data listed below has been used in the identification of transit location sites, and is used to triangulate findings from the primary data collection. Relevant secondary data on displacement trends in and out of South Sudan include:

- UNHCR South Sudan Situation: Information Sharing Portal: <http://data.unhcr.org/southsudan/>
- IOM South Sudan: <http://www.iomsouthsudan.org/tracking/dtm>
- Humanitarian Response: <https://www.humanitarianresponse.info/en/operations/south-sudan/>
- ReliefWeb: <http://reliefweb.int/country/ssd>

5.4 Primary Data Collection

On a monthly basis, primary data collection takes place for four weeks. These monthly cycles assist in identifying long-term displacement trends in a given geographic area. Data collection occurs on a daily basis at the key concentrations of where people mainly depart or arrive at the location of the base (port or road). The assessment uses quantitative data collection methods, comprising of a structured household survey and a structured key informant questionnaire (latter only if needed), both of which are explained in more detail below.

- **Household survey:** The household survey tool is implemented across all of the target locations to allow for comparative analysis across geographic areas. The assessment uses purposive sampling to identify HHs that are arriving and departing from key ports or roads. This entails an interview with the head of household using a household survey tool. REACH enumerators aim to interview as many persons with the intention to leave/return through a port in the selected transit locations; however, any individuals leaving or arriving outside of assessment hours are not captured. To allow for trend analysis, specific locations and time-frames will be selected, which will maximise the number of arrivals and departures captured. This will be consistent

each month to ensure trends captured are indicative of broader movements. Further, gathered data is normalised by the number of data collection days each month in a given transit location, allowing for comparison of data across different months.

- **Structured KI interview:** In the case of the TFP tool, purposive sampling is also used to identify the focal point managing the transportation, in the same locations as referenced above, and during the same data collection hours. Enumerators are encouraged in instances where there is a large volume of individuals/ households arriving/ departing from a key transit location (for example, arrival or departure of a large boat) to use the TFP tool to quickly assess the number of individuals/ households using the transportation by conducting a short survey with the focal point managing the transportation. Following the completion of the TFP tool, they are encouraged to use the regular PRM household survey tool by purposively sampling to identify individuals using the transportation.

In each transit location (Yambio, Kapoeta, Nyal, Akobo, Maban and Renk) data collection is managed by Assessment Officers who in turn oversee Field Coordinators who manage a team of enumerators. Enumerators are collecting data on mobile phones through the Open Data Kit application (Kobo Toolbox) and are provided with refresher trainings on the survey at the start of every month, as well as ad-hoc training sessions during data collection. Data is triangulated by confirming data through the Field Coordinator's knowledge of the area and input from other humanitarian partners also operating in the area.

Every day, at the end of data collection, the surveys are uploaded on the REACH/IMPACT Kobo-server and downloaded in .xls format as one dataset for a specific location. This dataset is cleaned during the evening, logging deleted entries and value changes, whilst the raw dataset is also stored. Assessment Officers oversee Field Coordinators, who are in turn responsible for data quality assurance and the supervision of field teams. The following protocols are in place to ensure the quality of data collected:

- Weekly spot checks of enumerators conducting interviews
- Daily data cleaning by Field Coordinators, who identify outliers, abnormalities and logical inconsistencies and give regular feedback to enumerators through monthly and ad-hoc trainings, during spot checks as well as the daily morning brief. Data points which can't be resolved through discussions with enumerators are deleted and when records (surveys) have more than three mistakes, the entire record is deleted from the dataset. A mistake is defined as suspicious, inconsistent or unreliable data, which cannot be fully explained by the enumerator.
- Weekly data cleaning by Assessment Officers, who review data cleaning conducted by Field Coordinators and provide additional feedback to the data collection teams in the form of re-training.
- Monthly data aggregation and cleaning by GIS/Data Management Officers in Juba, who provide monthly feedback on outliers and common mistakes, which inform the design of monthly debriefs and enumerator trainings.

After all dataset are cleaned, the raw and cleaned dataset, along with the data cleaning log, will be saved and stored in a clearly labelled folder.in: Dropbox (SSD REACH)\reach south sudan upscale\13_Port_Monitoring.

5.5 Data Analysis Plan

Quantitative data analysis is conducted using Excel. Datasets will be triangulated with secondary data sources with the express aim of answering the research questions of the assessment. Please see data analysis plan in Annex 2 for further details.

6. Product Typology

Table 1: Type and number of products required

Type of Product	Number of Product(s)	Additional information
-----------------	----------------------	------------------------

Situation Overview	4 (tri-monthly) (12 per year)	SOs focus at the county and state level that will be supported by information collected from port monitoring.
Factsheet	6 per month, one from each base	Monthly factsheets for each transit location, demonstrating key findings and displacement trends, including a map showing displacement patterns
Dataset	6 per month, one from each location	One aggregated dataset per location

7. Management Arrangements and Work Plan

7.1 Roles and Responsibilities

In total, there are 6 port monitoring teams across South Sudan. On average, each individual team will consist of 1 Assessment Officer, 1 Field Coordinator, and a team of enumerators (approximately numbering 6). Enumerators teams are split into one morning and one afternoon shift to attain greater data collection coverage. All assessment teams will be overseen by the Assessment Officer with support from the Field Coordinators. GIS Officers provide support if any technical assistance is required. Every month each REACH AO is responsible for data collection, data analysis and the creation of outputs (following the steps seen below under 7.3 Work Plan). The project will be overseen by the South Sudan Country Coordinator and additional support can be provided by any of the Senior Assessment Officers.

7.2 Resources: HR, Logistic and Financial

In terms of resources mobilisation:

- Enumerators will be hired on temporary casual labour contracts, fitting with data collection timelines
- Data collection tools, such as smartphones, have already been purchased.
- If the base has an ACTED office, there will be a HR and finance department to assist with payment, recruitment, and administrative issues. If there is not an ACTED base, the Assessment Officer will act as the focal point regarding finance, logistics and HR. The Juba office will provide support on logistics and other issues.

7.3 Work Plan

Months	February				March				April				May			
Weeks	1	2	3	4	5	6	7	8	9	10	11	12	13	14	15	16
Data collection																
Data cleaning on daily basis by FC and weekly checks by AO																
Data Analysis																
Draft factsheet and send to GVA for validation																
Publication																

8. Risks & Assumptions

Table 2: List of risks and mitigating action

Risk	Mitigation Measure
------	--------------------

Assessment locations becoming inaccessible due to security concerns, which prevents data collection and safety of staff.

Flexible work plan to allow movement of assessment alternative locations should security in location decline. Normalise data by the number of collection days each month to account for lack of consistency if data collection days were missed.

Interviewees are unwilling to participate in the assessment

Survey questions will respect the wishes of participants if they do not want to be interviewed or decide against being interviewed at any stage. Respondents will be approached in a courteous and respectful manner. If individuals remain unwilling to participate, enumerators will be instructed to move on to other households.

9. Monitoring and Evaluation

Table 3: Monitoring and evaluation targets

IMPACT Objective	External M&E Indicator	Internal M&E Indicator	Focal point	Tool	M&E Plan
Humanitarian stakeholders are accessing IMPACT products	Number of humanitarian organisations accessing IMPACT services/products	# of downloads of x product from Resource Centre	Country request to HQ	User log	X Yes <input type="checkbox"/> No
		# of downloads of x product from Relief Web	Country request to HQ		X Yes <input type="checkbox"/> No
		# of downloads of x product from Country level platforms	Country team		X Yes <input type="checkbox"/> No
	Number of individuals accessing IMPACT services/products	# of page clicks on x product from REACH global newsletter	Country request to HQ		X Yes <input type="checkbox"/> No
		# of page clicks on x product from country newsletter, sendingBlue, bit.ly	Country team		X Yes <input type="checkbox"/> No
		# of visits to x webmap/x dashboard	Country request to HQ		X Yes <input type="checkbox"/> No
IMPACT activities contribute to better program implementation and coordination of the humanitarian response	Number of humanitarian organisations utilising IMPACT services/products	# references in HPC documents (HNO, SRP, Flash appeals, Cluster/sector strategies)	Country team	Reference log	Humanitarian Needs Overview Humanitarian Response Plan Food Security and Livelihoods Cluster Response Strategy WASH Cluster Response Strategy UNHCR Country Strategy
		# references in single agency documents			
Humanitarian stakeholders are using IMPACT products	Humanitarian actors use IMPACT evidence/product	Perceived relevance of IMPACT country-programs	Country team	Usage Feedback and Usage Survey template	Survey monkey: As part of regular dissemination email, survey monkey sent every six months to

	<p>ts as a basis for decision making, aid planning and delivery</p> <p>Number of humanitarian documents (HNO, HRP, cluster/agency strategic plans, etc.) directly informed by IMPACT products</p>	<p>Perceived usefulness and influence of IMPACT outputs</p> <p>Recommendations to strengthen IMPACT programs</p> <p>Perceived capacity of IMPACT staff</p> <p>Perceived quality of outputs/programs</p> <p>Recommendations to strengthen IMPACT programs</p>			<p>assess usage of REACH products.</p> <p>Qualitative feedback: Each REACH staff responsible for reporting back to communications manager each time agency requests REACH information or provides feedback on how REACH information has been used</p>
Humanitarian stakeholders are engaged in IMPACT programs throughout the research cycle	<p>Number and/or percentage of humanitarian organisations directly contributing to IMPACT programs (providing resources, participating to presentations, etc.)</p>	<p># of organisations providing resources (i.e. staff, vehicles, meeting space, budget, etc.) for activity implementation</p> <p># of organisations/clusters inputting in research design and joint analysis</p> <p># of organisations/clusters attending briefings on findings;</p>	Country team	Engagement log	<p>X Yes <input type="checkbox"/> No</p> <p>X Yes <input type="checkbox"/> No</p> <p>X Yes <input type="checkbox"/> No</p>

10. Documentation Plan

- Terms of reference
- Data analysis plan
- Data collection tools
- Raw dataset and cleaning log
- Cleaned datasets

11. Annexes

1. Data Management Plan
2. Questionnaire(s) / Tool(s)
3. Dissemination Matrix
4. Data Analysis Plan

Annex 1: Data Management Plan

Detailed data management plan upon request.

Annex 2: Data Analysis Plan

Research questions	IN #	Data collection method	Indicator / Variable	Questionnaire Question	Questionnaire Responses	Data collection level
What is the demographic make-up of those moving and how many individuals/households are travelling?	B.1	HH Interview	% of Households (HH) per resident status of head of household (gender, age, IDP/HC)	What is the gender head of the household? (Household is defined as a group of people eating from the same pot. Head of household defined as the person in the household who is the main bread winner and decision-maker for the household).	1. Male 2. Female	HH
	B.2	HH Interview	% of Households (HH) per resident status of head of household (gender, age, IDP/HC)	What is the age of the head of household?	Constraint: 15 < hohh age < 126	HH
	B.3	HH Interview	% of HHs coming from each country location	What country are you originally from?	1. South Sudan 2. Sudan 3. Uganda 4. Kenya 5. Ethiopia 6. DRC 7. CAR 8. Other	HH
	B.7	HH Interview	Origin of HH (mapping purposes)	What settlement in \${origin_region_sub}	Text – name of settlement	HH

				are you originally from?		
<p>What is the demographic make-up of those moving and how many individuals/households are travelling?</p> <p>What is the demographic make-up of those moving and how many individuals/households are travelling?</p>	C.1	HH Interview	Number of boys aged 0-4	How many boys between 0 and 4 years are travelling within the household?	Enter number	HH
	C.2	HH Interview	Number of girls aged 0-4	How many girls between 0 and 4 years are travelling within the household?	Enter number	HH
	C.3	HH Interview	Number of boys aged 5-17	How many boys between 5 and 17 years are travelling within the household?	Enter number	HH
	C.4	HH Interview	Number of girls aged 5-17	How many girls between 5 and 17 years are travelling within the household?	Enter number	HH
	C.5	HH Interview	Number of men aged 18 – 59	How many men between 18 and 59 years are travelling within the household?	Enter number	HH
	C.6	HH Interview	Number of women aged 18 – 59	How many women between 18 and 59 years are travelling within the household?	Enter number	HH
	C.7	HH Interview	Number of men aged older than 60	How many men aged 60 years or older are travelling within the household?	Enter number	HH
	C.8	HH Interview	Number of women aged older than 60 Form shall automatically	How many women aged 60 years or older are travelling within the household?	Enter number	HH

travelling from?			mapping movements		4. Kenya 5. Ethiopia 6. DRC 7. CAR	
	D.2	HH Interview	Start of displacement trend, % of HH from x location	Are you coming from a camp (PoC/IDP/refugee) in \${prev_country}?	1. Yes 2. No	HH
	D.1.1	HH Interview	Start of displacement trend, % of HH from x location	Which camp from \${prev_country} are you coming from?	Text	HH
	D.2.4	HH Interview	Start of displacement trend, % of HH from x location	Which settlement from \${prev_country} are you coming from?	Text	HH
	D.3	KI Interview	Duration of movement	How long did the journey from \${previous_location} take? If selected more than two days, please specify.	1. Less than one day 2. One day 3. Two days 4. More than two days Enter text	KI
	D.4	KI interview	Regularity of transport movement.	How regularly is this \${transport_type} carrying individuals from \${previous_location} to \${current_location}? If selected other, please specify	1. Once a day 2. More than once a day 3. Once a week 4. More than once a week 5. Once a month 6. Other Enter text	KI
What are the key routes (previous location and desired next	E.1	HH Interview	Final destination of displacement, % of HH going to x location (as final destination) – can use information to map displacement trends and population	Which country are you going to?	1. South Sudan 2. Sudan 3. Uganda 4. Kenya 5. Ethiopia 6. DRC 7. CAR	HH
	E.2	HH Interview	Final destination of displacement trend, % of HH going to x location	Are you going to a camp (PoC/IDP/refugee) in \${prev_country}?	1. Yes 2. No	HH

location) used by those moving, including whether movement from/to a settlement, Protection of Civilian (PoC) site in South Sudan or a refugee camp outside South Sudan occurs?	E.1.1	HH Interview	Final destination of displacement trend, % of HH going to x location	Which camp in \${prev_country} are you going to?	Text	HH
	E.2.4	HH Interview	Final destination of displacement trend, % of HH going to x location	What settlement in \${prev_country} are you going to?	Text	HH
	E.3	KI Interview	Duration of movement	How long will the journey from \${current_location} to \${next_location} take? If selected more than two days, please specify.	5. Less than one day 6. One day 7. Two days 8. More than two days Enter text	KI
	E.4	KI Interview	Regularity of transport movement.	How regularly is this \${transport_type} carrying individuals from \${current_location} to \${next_location}? If selected other, please specify	7. Once a day 8. More than once a day 9. Once a week 10. More than once a week 11. Once a month 12. Other Enter text	KI
What are the key routes (previous location and desired next location) used by those moving, including whether movement from/to a settlement, Protection of Civilian (PoC) site in South Sudan or a refugee camp outside South Sudan occurs?	F.1	HH Interview	% of HH duration of stay	How long do you plan to stay at your final destination?	1. Less than 1 month 2. 1 to 3 months 3. 4 to 6 months 4. More than 6 months (temporarily) 5. Permanently 6. I don't know	HH

	F.2	HH Interview	% of whole HH, & of partial HH	Are you a whole or partial household?	1. Partial household 2. Whole household	HH
	F.3	HH Interview	Push factors, number of risks and vulnerabilities facing HHs, % of push factors	What is the main reason for leaving your most recent location?	1. Lack of security 2. Lack of health services 3. Lack of education services 4. Lack of food 5. Lack of shelter 6. Lack of water 7. No job 8. Far from family 9. Tensions with host community 10. Cattle raiding 11. Disease outbreak 12. No reason 13. Other (specify) 14. Don't know	HH
	F.5	HH	Pull factors, % of pull factors	What is the main reason for travelling to your final destination?	1. Security 2. Presence of health services 3. Presence of education services 4. Availability of food 5. Plant crops or cultivate land 6. Presence of food distribution 7. Presence of NFI distribution 8. Presence of shelter 9. Presence of water 10. Presence of jobs 11. Joining my family 12. No reasons 13. Other 14. Don't know	HH
	F.7	HH	% of transport for HH	What type of transport are you using for most of your journey?	1. Air 2. Bus 3. Canoe/Boat 4. Foot 5. Private vehicle 6. Truck/lorry 7. Other	HH
	F.9	HH	Means of facilitating transport, dependant on financial and social capital	How are you paying for your type of transport?	1. Own vehicle 2. Borrowed vehicle 3. Own money 4. Borrowed money 5. Humanitarian assistance 6. Humanitarian facilitated transport 7. Authority facilitated transport	HH

					8. Other	
	F.11	HH	% of people with specific needs in the HH travelling	Are there any people with specific needs in the household?	1. Breastfeeding 2. Critically ill 3. Elderly 4. Malnourished 5. Mentally disabled 6. Physically disabled 7. Pregnant women 8. Separated / unaccompanied child in HH 9. Single parent 10. No vulnerable people 11. Other	HH

Research Questions	SUB Q#	Data collection method	IN #	Indicator/ Variable	Questionnaire QUESTION	Survey response	Probes
What are the key routes (previous location and desired next location) used by those moving, including whether movement from/to a settlement, Protection of Civilian (PoC) site in South Sudan or a refugee camp outside South Sudan occurs?	A01	KI Survey	Meta Data	Location information	Please specify your base:	<i>itemset list</i>	
	A02	KI Survey	Meta Data	Location information	If other, please specify	<i>enter text</i>	
	A03	KI Survey	Meta Data	Enumerator information	Enumerator ID number:	1. Akobo 2. Kapoeta 3. Maban 4. Nyal 5. Renk 6. Yambio 7. Other	
What are the key routes (previous location and desired next location) used by those moving, including whether movement from/to a settlement, Protection of Civilian (PoC) site in South Sudan or a	A04	KI Survey	Meta Data	Location information	Port or road monitoring?	1. Port 2. Road	

refugee camp outside South Sudan occurs?							
What means of transport are used by those moving?	B01	KI Survey	% of KIs in certain role	KI Information	What is the role of the KI?	1. <i>Transport Driver</i> 2. <i>Transport Administrator</i> 3. <i>Transport Office Staff</i> 4. <i>Other</i>	
What means of transport are used by those moving?	B02	KI Survey	% of KIs in certain role	KI Information	If other, please specify	<i>Enter text</i>	
What means of transport are used by those moving?	B03	KI Survey	% of households/ individuals per transport type	Transport Type	What is the transport type being used to make this journey?	1. <i>Air</i> 2. <i>Bus</i> 3. <i>Canoe/ Boat</i> 4. <i>Foot</i> 5. <i>Motorbike/ Boda</i> 6. <i>Private vehicle</i> 7. <i>Taxi</i> 8. <i>Truck/ Lorry</i> 9. <i>Tractor</i> 10. <i>Other</i>	
What means of transport are used by those moving?	B04	KI Survey	% of households/ individuals per transport type	Transport Type	If other, please specify	<i>Enter text</i>	
	Note	KI Survey	Note	Note	This section is for transportation arriving to town	Note	Note
What are the key routes (previous location and desired next location) used by those moving,	C01	KI Survey	% of households/ individuals per	Location of origin	Which country are you coming from?	<i>Itemset list</i>	

including whether movement from/to a settlement, Protection of Civilian (PoC) site in South Sudan or a refugee camp outside South Sudan occurs?			previous destination				
	C02	KI Survey	% of households/ individuals per previous destination	Location of origin	Are you coming from a camp (PoC/IDP/Refugee in \${admin_0})?	1. Yes 2. No	
	C02.1	KI Survey	% of households/ individuals per previous destination	Location of origin	Which camp \${prev_camp} are you coming from?	Itemset list	
	C02.2	KI Survey	% of households/ individuals per previous destination	Location of origin	If other, please specify	Enter text	
	C03	KI Survey	% of households/ individuals per previous destination	Location of origin	What region (e.g. state) in \${admin_0} are you coming from?	Itemset list	
	C04	KI Survey	% of households/ individuals per previous destination	Location of origin	What sub-region (e.g. county) in \${admin_0} are you coming from?	Itemset list	
	C05	KI Survey	% of households/ individuals per previous destination	Location of origin	What settlement in \${admin_2} are you coming from?	Itemset list	

	C05.1	KI Survey	% of households/individuals per previous destination	Location of origin	If other, please specify	Enter text	
	C06	KI Survey	% of households/individuals per previous destination	Location of origin	What settlement in \${admin_2} are you coming from?	Itemset list	
	C07	KI Survey	% of households/individuals per previous destination	Location of origin	What settlement in \${next_subregion} are you coming from?	Itemset list	
	C07.1	KI Survey	% of households/individuals per previous destination	Location of origin	If other, please specify	Enter text	
	C08	KI Survey	% households/individuals by transport type	Household number	Do you know how many households are traveling by this \${transport_type} ?	1. Yes 2. No	
What is the demographic make-up of those moving and how many individuals/households are travelling?	C08.1	KI Survey	% households/individuals by transport type	Household number	Number of households	Enter integer	

			Household number		1. 1 to 10 2. 11 to 19 3. 20 to 20 4. 30 to 39 5. 40 to 49 6. 50 to 59 7. 60 to 69 8. 70 to 79 9. 80 to 89 10. 90 to 99 11. 100 and above 12. I do not know	
C09	KI Survey	% households/ individuals by transport type		Can you estimate how many household you were travelling with?		
C10	KI Survey	% households/ individuals by transport type	Individual number	Do you know how many individuals are traveling by this $\{transport_type\}$?	1. Yes 2. No	
C10.1	KI Survey	% households/ individuals by transport type	Individual number	Number of individuals	1. 1 to 10 2. 11 to 19 3. 20 to 20 4. 30 to 39 5. 40 to 49 6. 50 to 59 7. 60 to 69 8. 70 to 79 9. 80 to 89 10. 90 to 99 11. 100	

						<i>and above 12. I do not know</i>	
	C11	KI Survey	% households/ individuals by transport type	Individual number	Can you estimate how many individuals you were travelling with?	1. Yes 2. No	
What are the key routes (previous location and desired next location) used by those moving, including whether movement from/to a settlement, Protection of Civilian (PoC) site in South Sudan or a refugee camp outside South Sudan occurs?	C12	KI Survey	% journey length by transport type	Journey length	How long did the journey from \${admin_2} take?	1. Less than one day 2. One day 3. Two days 4. More than two days 3. More than two days	
What are the key routes (previous location and desired next location) used by those moving, including whether movement from/to a settlement, Protection of Civilian (PoC) site in South Sudan or a refugee camp outside South Sudan occurs?	C12.1	KI Survey	% journey length by transport type	Journey length	Please specify the number of days	<i>Enter text</i>	

What are the vulnerabilities of those moving?	C13	KI Survey	% journeys by security incident	Security issues	Were there any security issues when traveling here?	CAR 1. <i>Armed actors</i> 2. <i>Cattle-raiding</i> 3. <i>Checkpoint issue</i> 4. <i>Damage d/ flooded roads</i> 5. <i>Looting</i> 6. <i>Transport breakdown</i> 7. <i>Other</i> BOATS 1. <i>Armed actor</i> 2. <i>Boat engine breakdown</i> 3. <i>Boat conditions</i> 4. <i>Boat overloaded (above capacity)</i> 5. <i>Boat overturned</i> 6. <i>Cattle-raiding</i> 7. <i>Checkpoint issue</i> 8. <i>Damage d/</i>	
---	-----	-----------	---------------------------------	-----------------	---	---	--

						flooded roads 9. Looting 10. Low water level 11. Transport breakdown 12. Other	
	C13.1	KI Survey	% journeys by security incident	Security issues	If other, please specify.	enter text	
What are the key routes (previous location and desired next location) used by those moving, including whether movement from/to a settlement, Protection of Civilian (PoC) site in South Sudan or a refugee camp outside South Sudan occurs?	C14	KI Survey	% stops per journey	Journey stops	Did you stop in any locations along the way?	1. Yes 2. No	
	C15	KI Survey	% stops per journey	Journey stops	How many stops did you have to make along the way?	Enter integer	
	C16	KI Survey	% stops per location during journey	Journey stops	Which country was your first location stop in?	itemset list	
	C16.1	KI Survey	% stops per location	Journey stops	What region in \${first_location} was your first location stop in?	itemset list	

		during journey				
C16.2	KI Survey	% stops per location during journey	Journey stops	What sub-region (i.e. county) in \${first_location} was your first location stop in?	<i>itemset list</i>	
C16.3	KI Survey	% stops per location during journey	Journey stops	What settlement in \${first_subregion} was your first location stop in?	<i>itemset list</i>	
C16.3.1	KI Survey	% stops per location during journey	Journey stops	If other, please specify	<i>enter text</i>	
C16.4	KI Survey	% stops per location during journey	Journey stops	What settlement in \${first_location} was your first location stop in?	<i>itemset list</i>	
C16.5.1	KI Survey	% stops per location during journey	Journey stops	If other, please specify	<i>Enter text</i>	
C17	KI Survey	% stops per location during journey	Journey stops	Which country was your second location stop in?	<i>itemset list</i>	
C17.1	KI Survey	% stops per location during journey	Journey stops	What region in \${second_location} was your second location stop in?	<i>itemset list</i>	
C17.2	KI Survey	% stops per location during journey	Journey stops	What sub-region (i.e. county) in \${second_location} was your second location stop in?	<i>itemset list</i>	
C17.3	KI Survey	% stops per location during journey	Journey stops	What settlement in \${second_subregion} was your second location stop in?	<i>itemset list</i>	
C17.3.1	KI Survey	% stops per location during journey	Journey stops	If other, please specify	<i>Enter text</i>	

	C17.4	KI Survey	% stops per location during journey	Journey stops	What settlement in \${second_location} was your first location stop in?	<i>itemset list</i>	
	C17.4.1	KI Survey	% stops per location during journey	Journey stops	If other, please specify	<i>Enter text</i>	
	C18	KI Survey	% stops per location during journey	Journey stops	Which country was your third location stop in?	<i>itemset list</i>	
	C18.1	KI Survey	% stops per location during journey	Journey stops	What region in \${third_location} was your third location stop in?	<i>itemset list</i>	
	C18.2	KI Survey	% stops per location during journey	Journey stops	What sub-region (i.e. county) in \${third_location} was your third location stop in?	<i>itemset list</i>	
	C18.3	KI Survey	% stops per location during journey	Journey stops	What settlement in \${third_subregion} was your third location stop in?	<i>itemset list</i>	
	C18.3.1	KI Survey	% stops per location during journey	Journey stops	If other, please specify	<i>Enter text</i>	
	C18.4	KI Survey	% stops per location during journey	Journey stops	What stop in \${third_location} was your third location stop in?	<i>itemset list</i>	
	C18.4.1	KI Survey	% stops per location during journey	Journey stops	If other, please specify	<i>Enter text</i>	
	C19	KI Survey	% stops per location during journey	Journey stops	Please provide the names of the additional locations you stopped in. (Use a colon to separate different names)	<i>Enter text</i>	

	Note	KI Survey	Note	Note	This section is for transportation leaving town	Note	Note
What are the key routes (previous location and desired next location) used by those moving, including whether movement from/to a settlement, Protection of Civilian (PoC) site in South Sudan or a refugee camp outside South Sudan occurs?			% of households/individuals per previous destination	Location of origin		<i>Itemset list</i>	
	D01	KI Survey			Which country are you traveling to?		
	D02	KI Survey	% of households/individuals per previous destination	Location of origin	Are you traveling to a camp (PoC/IDP/Refugee in \${next_admin_0})?	1. Yes 2. No	
	D02.1	KI Survey	% of households/individuals per previous destination	Location of origin	Which camp \${next_admin_0} are you traveling to?	<i>Itemset list</i>	
	D02.2	KI Survey	% of households/individuals per previous destination	Location of origin	If other, please specify	<i>Enter text</i>	
	D03	KI Survey	% of households/individuals per previous destination	Location of origin	What region (e.g. state) in \${next_admin_0} are you traveling to?	<i>Itemset list</i>	
	D04	KI Survey	% of households/individuals per previous destination	Location of origin	What sub-region (e.g. county) in \${next_admin_0} are you traveling to?	<i>Itemset list</i>	
	D05	KI Survey	% of households/	Location of origin	What settlement in \${next_subregion}	<i>Itemset list</i>	

			individuals per previous destination		are you traveling to?		
	D05.1	KI Survey	% of households/ individuals per previous destination	Location of origin	If other, please specify	Enter text	
	D06	KI Survey	% of households/ individuals per previous destination	Location of origin	What settlement in \${next_subregion} are you traveling to?	Itemset list	
	D07	KI Survey	% of households/ individuals per previous destination	Location of origin	What settlement in \${next_subregion} are you traveling to?	Itemset list	
	D07.1	KI Survey	% of households/ individuals per previous destination	Location of origin	If other, please specify	Enter text	
	D08	KI Survey	% households/ individuals by transport type	Household number	Do you know how many households are traveling by this \${transport_type}?	1. Yes 2. No	
What is the demographic make-up of those moving and how many individuals/households are travelling?	D08.1	KI Survey	% households/ individuals by transport type	Household number	Number of households	Enter integer	

			Household number		1. 1 to 10 2. 11 to 19 3. 20 to 20 4. 30 to 39 5. 40 to 49 6. 50 to 59 7. 60 to 69 8. 70 to 79 9. 80 to 89 10. 90 to 99 11. 100 and above 12. I do not know	
D09	KI Survey	% households/individuals by transport type		Can you estimate how many household are traveling by this \$(transport_type) ?		
D10	KI Survey	% households/individuals by transport type	Individual number	Do you know how many individuals are traveling by this \${transport_type} ?	1. Yes 2. No	
D10.1	KI Survey	% households/individuals by transport type	Individual number	Number of individuals	Enter integer	
D11	KI Survey	% households/individuals by transport type	Individual number	Can you estimate how many individuals are traveling by this \$(transport_type) ?	1. 1 to 10 2. 11 to 19 3. 20 to 20 4. 30 to 39 5. 40 to 49 6. 50 to 59 7. 60 to 69	

						8. 70 to 79 9. 80 to 89 10. 90 to 99 11. 100 and above 12. I do not know	
What are the key routes (previous location and desired next location) used by those moving, including whether movement from/to a settlement, Protection of Civilian (PoC) site in South Sudan or a refugee camp outside South Sudan occurs?	D12	KI Survey	% journey length by transport type	Journey length	How long do you think the journey to \${admin_2} will take?	1. Less than one day 2. One day 3. Two days 4. More than two days 3. More than two days	
	D12.1	KI Survey	% journey length by transport type	Journey length	Please specify why more than 2 days	Enter text	

What are the vulnerabilities of those moving?				Security issues		CAR 1. Armed actors 2. Cattle-raiding 3. Checkpoint issue 4. Damage d/ flooded roads 5. Looting 6. Transport breakdown 7. Other BOATS 1. Armed actor 2. Boat engine breakdown 3. Boat conditions 4. Boat overloaded (above capacity) 5. Boat overturned 6. Cattle-raiding 7. Checkpoint issue 8. Damage d/	
	D13	KI Survey	% journeys by security incident		Do you anticipate any security issues when traveling to your next destination?		

						flooded roads 9. Looting 10. Low water level 11. Transport breakdown 12. Other	
	D13.1	KI Survey	% journeys by security incident	Security issues	If other, please specify.	enter text	
What are the key routes (previous location and desired next location) used by those moving, including whether movement from/to a settlement, Protection of Civilian (PoC) site in South Sudan or a refugee camp outside South Sudan occurs?	D14	KI Survey	% stops per journey	Journey stops	Will you stop in any locations along the way?	1. Yes 2. No	
	D15	KI Survey	% stops per journey	Journey stops	How many stops do you think you will make along the way?	Enter integer	
	D16	KI Survey	% stops per location during journey	Journey stops	What country do you anticipate your first location stop to be in?	itemset list	
	D16.1	KI Survey	% stops per location during journey	Journey stops	What region in \${first_location} will your first location stop be in?	itemset list	

	D16.2	KI Survey	% stops per location during journey	Journey stops	What sub-region (i.e. county) in \${first_location} will your first location stop be in?	<i>itemset list</i>	
	D16.3	KI Survey	% stops per location during journey	Journey stops	What settlement in \${first_subregion_out} will your first location stop be in?	<i>itemset list</i>	
	D16.3.1	KI Survey	% stops per location during journey	Journey stops	If other, please specify	<i>enter text</i>	
	D16.4	KI Survey	% stops per location during journey	Journey stops	What settlement in \${first_location_out} will your first location stop be in?	<i>itemset list</i>	
	D16.5.1	KI Survey	% stops per location during journey	Journey stops	If other, please specify	<i>Enter text</i>	
	D17	KI Survey	% stops per location during journey	Journey stops	Which country will your second location stop be in?	<i>itemset list</i>	
	D17.1	KI Survey	% stops per location during journey	Journey stops	What region in \${second_location_out} will your second location stop be in?	<i>itemset list</i>	
	D17.2	KI Survey	% stops per location during journey	Journey stops	What sub-region (i.e. county) in \${second_location_out} will your second location stop be in?	<i>itemset list</i>	
	D17.3	KI Survey	% stops per location during journey	Journey stops	What settlement in \${second_subregion_out} will your second location stop be in?	<i>itemset list</i>	
	D17.3.1	KI Survey	% stops per location	Journey stops	If other, please specify	<i>Enter text</i>	

		during journey				
D17.4	KI Survey	% stops per location during journey	Journey stops	What settlement in \${second_location} will your second location stop be in?	<i>itemset list</i>	
D17.4.1	KI Survey	% stops per location during journey	Journey stops	If other, please specify	<i>Enter text</i>	
D18	KI Survey	% stops per location during journey	Journey stops	Which country will your third location stop be in?	<i>itemset list</i>	
D18.1	KI Survey	% stops per location during journey	Journey stops	What region in \${third_location_out} will your third location stop be in?	<i>itemset list</i>	
D18.2	KI Survey	% stops per location during journey	Journey stops	What sub-region (i.e. county) in \${third_location_out} will your third location stop be in?	<i>itemset list</i>	
D18.3	KI Survey	% stops per location during journey	Journey stops	What settlement in \${third_subregion_out} will your third location stop be in?	<i>itemset list</i>	
D18.3.1	KI Survey	% stops per location during journey	Journey stops	If other, please specify	<i>Enter text</i>	
D18.4	KI Survey	% stops per location during journey	Journey stops	What stop in \${third_location_out} will your third location stop be in?	<i>itemset list</i>	
D18.4.1	KI Survey	% stops per location during journey	Journey stops	If other, please specify	<i>Enter text</i>	

	D19	KI Survey	% stops per location during journey	Journey stops	Please provide the names of the additional locations you stopped in. (Use a colon to separate different names)	Enter text	
	Note	KI Survey	Note	Note	Inbound and outbound journey response	Note	Note
What means of transport are used by those moving?	E01		% transportation traveling per frequency measurement	Transport frequency	How regularly is this $\{transport_type\}$ carrying individual between first settlement to monitoring location?	1. Once a day 2. More than once a day 3. Once a week 4. More than once a week 5. Once a month 6. Other	
What means of transport are used by those moving?	E01.1		% transportation traveling per frequency measurement	Transport frequency	If other, please specify	Enter text	
<ul style="list-style-type: none"> • What is the demographic make-up of those moving and how many individuals/households are travelling? • What are the key routes (previous location and desired next location) used by those moving, including whether movement from/to a settlement, Protection of Civilian (PoC) site in South Sudan or a refugee camp outside South Sudan occurs? • What means of transport are used by 	E02		Additional information not included in survey	Additional information	Is there any additional information that you would like to provide about this transport?	1. Yes 2. No	
	E03		Additional information not included in survey	Additional information	Additional information	Enter text	

those moving?							
• What are the push and pull factors for movement from the previous location and movement to the desired next destination?							
• What are the vulnerabilities of those moving?							

Annex 3: Port Monitoring Tool

Port Monitoring (PM) Questionnaire - V3 (March 2018)

Documentation Key

Option	Description
constraint	limitation on what value can be entered for the question.
excel value	monospace code block indicates a value that appears in the data output.
group	assigned an upper-case letter and underlined.
group relevant	skip logic applied to the entire group.
name	the value of the data output excel column.
note	indicated by light grey text with a left-hand vertical bar.
relevant	skip logic that shows/hides question based on previous selection.
sub-group	assigned a lower-case letter from its parent group, plus a sequential number.
sub-group relevant	skip logic inherited from the sub-group.
type	input method, one of: select one, select multiple, text, integer.

Table of Contents

- [A. Enumerator Info](#)
- [B. Key informant Info](#)
- [C. Household info](#)
- [D. Previous location](#)
 - [d1. From a camp](#)
 - [d2. From a settlement](#)
- [E. Next location](#)
 - [e1. To a camp](#)
 - [e2. To a settlement](#)
- [F. Additional info](#)

- [G. Final note](#)

REACH is monitoring the port and the road to understand more about you, where you have come from and the reason why you are moving. Any information that you provide will be kept strictly confidential. This is voluntary and you can quit at any time during the interview. However, we hope that you will participate since your views are important. Do you have any questions? May I begin now?

A
Enumer
ator Info

[↑ back to top](#)

1. Please specify your base:

- name: base
- select one:
 - akobo: Akobo
 - kapoeta: Kapoeta
 - maban: Maban
 - nyal: Nyal
 - renk: Renk
 - yambio: Yambio

2. Enumerator ID number:

- name: enumerator_id
- select one:
 - 1 - 15

3. Entry, exit, or transit?

- name: movement_type
- select one:
 - entry: Entry
 - exit: Exit
 - transit: Transit

B Key informant info

[↑ back to top](#)

1. What is the gender of the head of household?

(Household is defined as a group of people eating from the same pot. Head of household defined as the person in the household who is the main bread winner and decision-maker for the household).

- name: hohh_gender
- select one:
 - male: Male
 - female: Female

2. What is the age of the head of household?

- name: hohh_age
- constraint: $15 < \text{hohh_age} < 126$
- integer

3. What country are you originally from?

- name: origin_country
- select one:
 - SouthSudan: South Sudan
 - Sudan: Sudan
 - Uganda: Uganda
 - Kenya: Kenya
 - Ethiopia: Ethiopia
 - DRC: Democratic Republic of the Congo
 - CAR: Central African Republic
 - other: Other

4. If other, please specify

- name: origin_country_other
- relevant: origin_country = other
- text

5. What region (e.g. state) in \${origin_country} are you originally from?

- name: origin_region
- relevant: origin_country != other
- select one:
 - List of Admin 1 regions

6. What sub-region (e.g. county) in \${origin_region} are you originally from?

- name: origin_region_sub
- relevant: origin_country != other
- select one:
 - *List of Admin 2 sub-regions*

7. What settlement in \${origin_region_sub} are you originally from?

- name: origin_settlement
- relevant: origin_country = SouthSudan
- select one:
 - *List of South Sudanese settlements*

8. What settlement in \${origin_region_sub} are you originally from?

- name: origin_settlement_other
- relevant: origin_country != SouthSudan or origin_settlement = other
- text

C
Househ
old info

[**↑ back to top**](#)

You will now be asked about the gender and ages of people traveling in the household

1. How many BOYS between 0 and 4 years are travelling within the household?

- name: m_0_4
- constraint: $0 \leq m_0_4 < 20$
- integer

2. How many GIRLS between 0 and 4 years are travelling within the household?

- name: f_0_4
- constraint: $0 \leq f_0_4 < 20$
- integer

3. How many BOYS between 5 and 17 years are travelling within the household?

- name: m_5_17
- constraint: $0 \leq m_5_17 < 20$
- integer

4. How many GIRLS between 5 and 17 years are travelling within the household?

- name: f_5_17
- constraint: $0 \leq f_{5_17} < 20$
- integer

5. How many MEN between 18 and 59 years are travelling within the household?

- name: m_18_59
- constraint: $0 \leq m_{18_59} < 20$
- integer

6. How many WOMEN between 18 and 59 years are travelling within the household?

- name: f_18_59
- constraint: $0 \leq f_{18_59} < 20$
- integer

7. How many MEN aged 60 years or older are travelling within the household?

- name: m_above60
- constraint: $0 \leq m_{above60} < 20$
- integer

8. How many WOMEN aged 60 years or older are travelling within the household?

- name: f_above60
- constraint: $0 \leq f_{above60} < 20$
- integer

D
Previou
s
location

[↑ back to top](#)

- group relevant: movement_type = entry or movement_type = transit

1. Which country are you coming from?

- name: prev_country
- select one:
 - SouthSudan: South Sudan
 - Sudan: Sudan
 - Uganda: Uganda
 - Kenya: Kenya

- Ethiopia: Ethiopia
- DRC: Democratic Republic of the Congo
- CAR: Central African Republic

2. Are you coming from a camp (PoC / IDP / refugee) in \${prev_country}?

- name: prev_camp_yn
- select one:
 - yes: Yes
 - no: No

d1 From a camp

[↑ back to top](#)

- sub-group relevant: prev_camp_yn = yes

1. Which camp from \${prev_country} are you coming from?

- name: prev_camp
- select one:
 - *List of camps*

2. If other, please specify

- name: prev_camp_other
- relevant: prev_camp = other
- text

3. Which settlement in \${prev_camp} are you coming from?

- name: prev_camp_site
- relevant: prev_camp = Gambella or prev_camp = Assosa or prev_camp = WhiteNile
- select one:
 - *List of camp sites*

4. If other, please specify

- name: prev_camp_site_other
- relevant: prev_camp_site = other
- text

d2 From a settlement

[↑ back to top](#)

sub-group relevant: prev_camp_yn = no

1. What region (e.g. state) in \${prev_country} are you coming from?

- name: prev_region
- select one:
 - *List of Admin 1 regions*

2. What sub-region (e.g. county) in \${prev_region} are you coming from?

- name: prev_region_sub
- select one:
 - *List of Admin 2 sub-regions*

3. What settlement in \${prev_region_sub} are you coming from?

- name: prev_settlement
- relevant: prev_country = SouthSudan
- select one:
 - *List of South Sudanese settlements*

4. What settlement in \${prev_region_sub} are you coming from?

- name: prev_settlement_other
- relevant: prev_country != SouthSudan or prev_settlement = other
- text

**E Final
destinat
ion**

[↑ back to top](#)

- group relevant: movement_type = exit or movement_type = transit

1. Which country are you going to?

- name: next_country
- select one:
 - SouthSudan: South Sudan
 - Sudan: Sudan
 - Uganda: Uganda
 - Kenya: Kenya
 - Ethiopia: Ethiopia
 - DRC: Democratic Republic of the Congo
 - CAR: Central African Republic

2. Are you going to a camp (PoC / IDP / refugee) in \${next_country}?

- name: next_camp_yn
- select one:
 - yes: Yes
 - no: No

e1 To a camp

[↑ back to top](#)

- sub-group relevant: next_camp_yn = yes
- 1. Which camp from \${next_country} are you going to?**

- name: next_camp
- select one:
 - *List of camps*

2. If other, please specify

- name: next_camp_other
- relevant: next_camp = other
- text

3. Which settlement in \${next_camp} are you going to?

- name: next_camp_site
- relevant: next_camp = Gambella or next_camp = Assosa or next_camp = WhiteNile
- select one:
 - *List of camp sites*

4. If other, please specify

- name: next_camp_site_other
- relevant: next_camp_site = other
- text

e2 To a settlement

[↑ back to top](#)

sub-group relevant: next_camp_yn = no

1. What region (e.g. state) in \${next_country} are you going to?

- name: next_region
- select one:
 - *List of Admin 1 regions*

2. What sub-region (e.g. county) in \${next_region} are you going to?

- name: next_region_sub
- select one:
 - *List of Admin 2 sub-regions*

3. What settlement in \${next_region_sub} are you going to?

- name: next_settlement
- relevant: next_country = SouthSudan
- select one:
 - *List of South Sudanese settlements*

4. What settlement in \${next_region_sub} are you going to?

- name: next_settlement_other
- relevant: next_country != SouthSudan or next_settlement = other
- text

F
Additional
info

[↑ back to top](#)

1. How long do you plan to stay at your final destination?

- name: stay_duration
- select one:
 - less_1_month: Less than 1 month
 - 1_3_months: 1 to 3 months
 - 4_6_months: 4 to 6 months
 - 6_months: More than 6 months (temporarily)
 - permanently: Permanently
 - dontknow: I don't know or don't want to answer

2. Are you a whole or partial household?

- name: family_composition
- select one:
 - partial: Partial household
 - whole: Whole household

3. What is the main reason for leaving your most recent location?

- name: push_factors

- select one:
 - lack_security: Lack of security (killing, rape, fighting)
 - lack_health: Lack of health services
 - lack_educ: Lack of education services
 - lack_food: Lack of food
 - lack_shelter: Lack of shelter
 - lack_water: Lack of water
 - no_job: No job
 - far_family: Far from the family
 - frictions: Tensions with host community
 - cattle_raid: Cattle raiding
 - disease_outbreak: Disease outbreak
 - none: No reason
 - other: Other
 - dontknow: I don't know or don't want to answer

4. If other, please specify

- name: push_factors_other
- relevant: push_factors = other
- text

5. What is the main reason for travelling to your final destination?

- name: pull_factors
- select one:
 - security: Security
 - health_ser: Presence of health services
 - educ_ser: Presence of education services
 - local_food: Availability of local food
 - plant_crops: Plant crops or cultivate land
 - food_dist: Presence of food distribution
 - nfi_dist: Presence of NFI distribution
 - shelter: Presence of shelter
 - water: Presence of water

- job: Presence of jobs
- family: Joining my family
- no_reason: No reasons
- other: Other
- dontknow: I don't know or don't want to answer

6. If other, please specify

- name: pull_factors_other
- relevant: pull_factors = other
- text

7. What type of transport are you using for most of your journey?

- name: transport_type
- select one:
 - air: Air
 - bus: Bus
 - canoe_boat: Canoe / Boat
 - foot: Foot
 - private_vehicle: Private vehicle
 - truck_lorry: Truck / Lorry
 - other: Other

8. If other, please specify

- name: transport_type_other
- relevant: transport_type = other
- text

9. How are you paying for your type of transport?

- name: money_source
- select one:
 - own_vehicle: Own vehicle (car, canoe, bike)
 - borrowed_vehicle: Borrowed vehicle (car, canoe, bike)
 - own_money: Own money (savings)
 - borrowed_money: Borrowed money
 - humanitarian_cash: Humanitarian assistance (cash)

- humanitarian_facilitated: Humanitarian facilitated transport
- authority_facilitated: Arranged by authorities
- other: Other

10. If other, please specify

- name: money_source_other
- relevant: money_source = other
- text

11. Are there any people with specific needs in the household?

- name: vulnerabilities
- select multiple:
 - breastfeeding: Breastfeeding
 - critically_ill: Critically ill
 - elderly: Elderly
 - malnourished: Malnourished
 - mentally_disabled: Mentally disabled
 - physically_disabled: Physically disabled
 - pregnant_women: Pregnant women
 - separated_unaccomp_child: Separated child in household / Unaccompanied minor
 - single_parent: Single parent
 -
 - no_vulnerable: No vulnerable people
 - other: Other

12. If other, please specify

- name: vulnerabilities_other
- relevant: vulnerabilities = other
- text

**G Final
Note**

[↑ back to top](#)

Thank you for completing the survey.

1. Please include any useful information you (the enumerator) learned that wasn't part of this questionnaire.

- name: end_survey_note
- text

2. Please take the GPS coordinates of your location.

- name: gps
- geopoint

Annex 4: Transport Focal Point Tool

Introduction

REACH is monitoring the port and the road to understand more about transportation and individuals moving in this area, such as where individuals come from and why they are moving. Any information that you provide will be kept strictly anonymous. This is voluntary and you can quit at any point. However, we hope that you will participate since your views are useful for humanitarian response planning. The survey will take approximately five minutes. Do you have any questions? May I begin now?

Enumerator Information

1. Please specify your (enumerator) base:

(select one)

Akobo	
Kapoeta	
Nyal	
Renk	
Yambio	

2. Please specify your enumerator ID

(enter integer)

3. Are you monitoring a port or road?

Port	
Road	

KI Information

1. What is the role of the KI?

Transport driver	
Transport administrator	
Transport office staff	
Other	

2. What is the transport type being used to make this journey?

Car	
Bus	
Truck	

Boat	
Canoe	

Movement information

1. Which is the location that you are monitoring from?⁴

(select monitoring location)

Koatkoangthor Road	
Gadrang Road	
Market Port	
Tundol port	

2. What is the type of movement?

(select one)

Inbound to [settlement]	
Outbound to another location	

If inbound proceed to 3, if outbound proceed to 9

Inbound section

3. Where is the location you are arriving from?

(select one)

Itemset list

3.1 Do you know how many households⁵ are traveling by this [vehicle type]?

(Select one)

Yes	
Do not know	
Prefer not to say	

If yes, proceed to 3.2, if no proceed to 3.3

3.2 Number of households:

(enter integer)

3.3 Can you estimate how many households you were travelling with?

(enter integer)

3.4 Do you know how many individuals are travelling by this [vehicle type]?

(Select one)

Yes	
Do not know	

⁴ This can be adapted according to the location

⁵ Household is defined as a group of individuals who in the previous location lived in the same dwelling and consumed from the same 'pot' (shared food resources).

Prefer not to say	
-------------------	--

If yes, proceed to 4, if no proceed to 3.6.

3.5 Number of Individuals:
(enter integer)

3.5 Can you estimate how many individuals you were travelling with?
(enter integer)

4. How long did the journey from [departure location] take?
(select one)

Less than one day	
One to two days	
More than two days	

If selected more than two days, please proceed to 4.1, if not proceed to 6

4.1, Please specify the number of days the journey took
(text)

5. Were there any security issues when travelling here?⁶
By Car/ Foot:

Armed actors
Cattle-raiding
Checkpoint issue
Conflict
Damaged/ flooded roads
Looting
Transport breakdown
Other

By Boat:

Armed actors
Boat engine breakdown
Boat conditions
Boat overloaded (above capacity)
Boat overturned
Checkpoint issue
Conflict
Low water level

⁶ Option choices disaggregated depended on transport type.

Other

6. Did you stop in any locations along the way?

Yes
No
Prefer not to say

6.1 How many stops did you have to make along the way?
(enter integer)

(enter integer)

6.2 Location stops

Item set list⁷

If exceeding more than three stops move to 6.3

6.3 Please provide the names of the additional locations you stopped in.

Outbound section

Outbound section resuming from question 2:

9. Where is the location you are travelling to?

(select one)

Itemset list

10.1 Do you know how many households are traveling by this [vehicle type]?

(Select one)

Yes	<input type="text"/>
Do not know	<input type="text"/>
Prefer not to say	<input type="text"/>

If yes, proceed to 10.2, if no proceed to 10.3

10.2 Number of households:

(enter integer)

10.3 Can you estimate how many households are travelling by this {transport_type}?

(enter integer)

⁷ Participants will be asked for the country, region, sub region and settlement of up to three stops. For more than three stops, they will be prompted to free-write the additional stops.

10.4 Do you know how many individuals are travelling by this [vehicle type]?

(Select one)

Yes	
Do not know	
Prefer not to say	

If yes, proceed to 10.4, if no proceed to 11.

10.4 Number of Individuals:

(enter integer)

11. Can you estimate the number of individuals are traveling by this transport type?

(enter integer)

12. How long do you think the journey to [next location] will take?

(select one)

Less than one day	
One to two days	
More than two days	

If selected more than two days, proceed to 12.1, if not proceed to 13

12.1 Please specify how many days

(text)

13. Do you anticipate any security issues on your way to [next location]?

(select one)

Boat

Armed actors
Boat engine breakdown
Boat conditions
Boat overloaded (above capacity)
Boat overturned
Cattle-raiding
Checkpoint issue
Conflict
Damaged/ flooded roads
Looting
Low water level
Transport breakdown
Other

Car/ Foot

Armed actors

Cattle-raiding
Checkpoint issue
Conflict
Damaged/ flooded roads
Looting
Transport breakdown
Other

14. Did you stop in any locations along the way?

Yes
No
Prefer not to say

14.1 How many stops did you have to make along the way?
(enter integer)

(enter integer)

14.2 Location stops

Item set list⁸

If exceeding more than three stops move to 14.2

14.2 Please provide the names of the additional locations you stopped in.

Outbound and Inbound movement

15. How regularly is this [transport type] carrying individuals from [current location] to [next location]?

Once a day	
More than once a day	
Once a week	
More than once a week	
Once a month	
Other	

If other please proceed to 13.2, if not proceed to 14

- If other, please specify:

(enter text)

16. Is there any additional information that you would like to provide about this [transport type]?
(Select one)

⁸ Participants will be asked for the country, region, sub region and settlement of up to three stops. For more than three stops, they will be prompted to free-write the additional stops.

Yes	
No	
Prefer not to say	

If selected yes, please proceed to 14.1, if no or prefer not to say, please proceed to the next section.

14.1 Please specify:
(enter text)

Thank you

(Text)

Thank you for your participation in this survey

End of survey comments

(For enumerator)

1. Please provide any additional observations⁹:

(enter text)

Annex 4: Dissemination Matrix

Dissemination Channel	Comments
REACH Resource Centre	
SendInBlue	
Social Media	This shall be done by communications in Geneva
bit.ly links	
REACH Mailing List	
Meetings and forums for presentations	In Juba or at each base location e.g. cluster meetings

⁹ This question will not be mandatory and enumerators can skip.