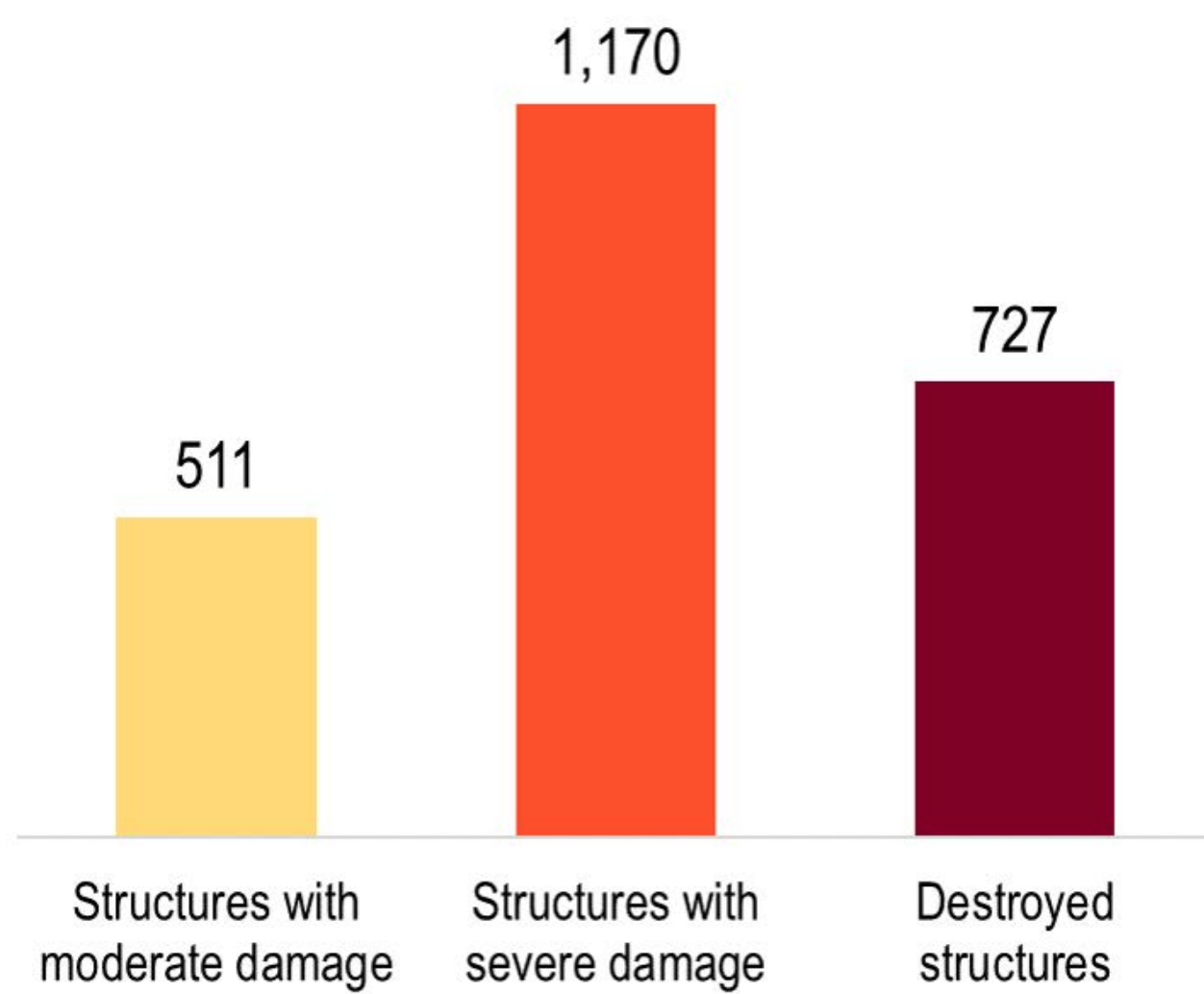


Ein Terma Summary

71% of Structures Damaged or Destroyed

Structure count by damage severity



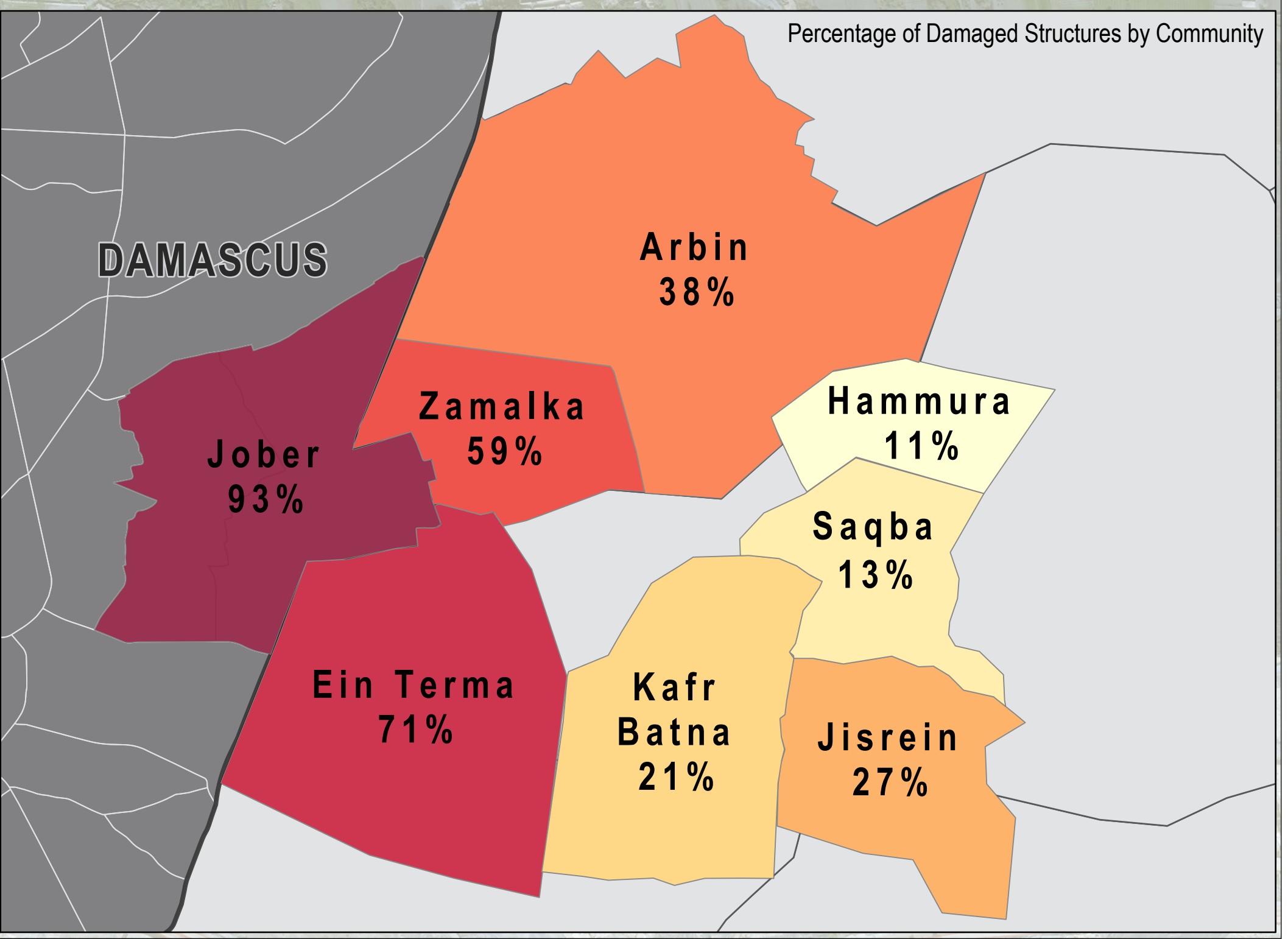
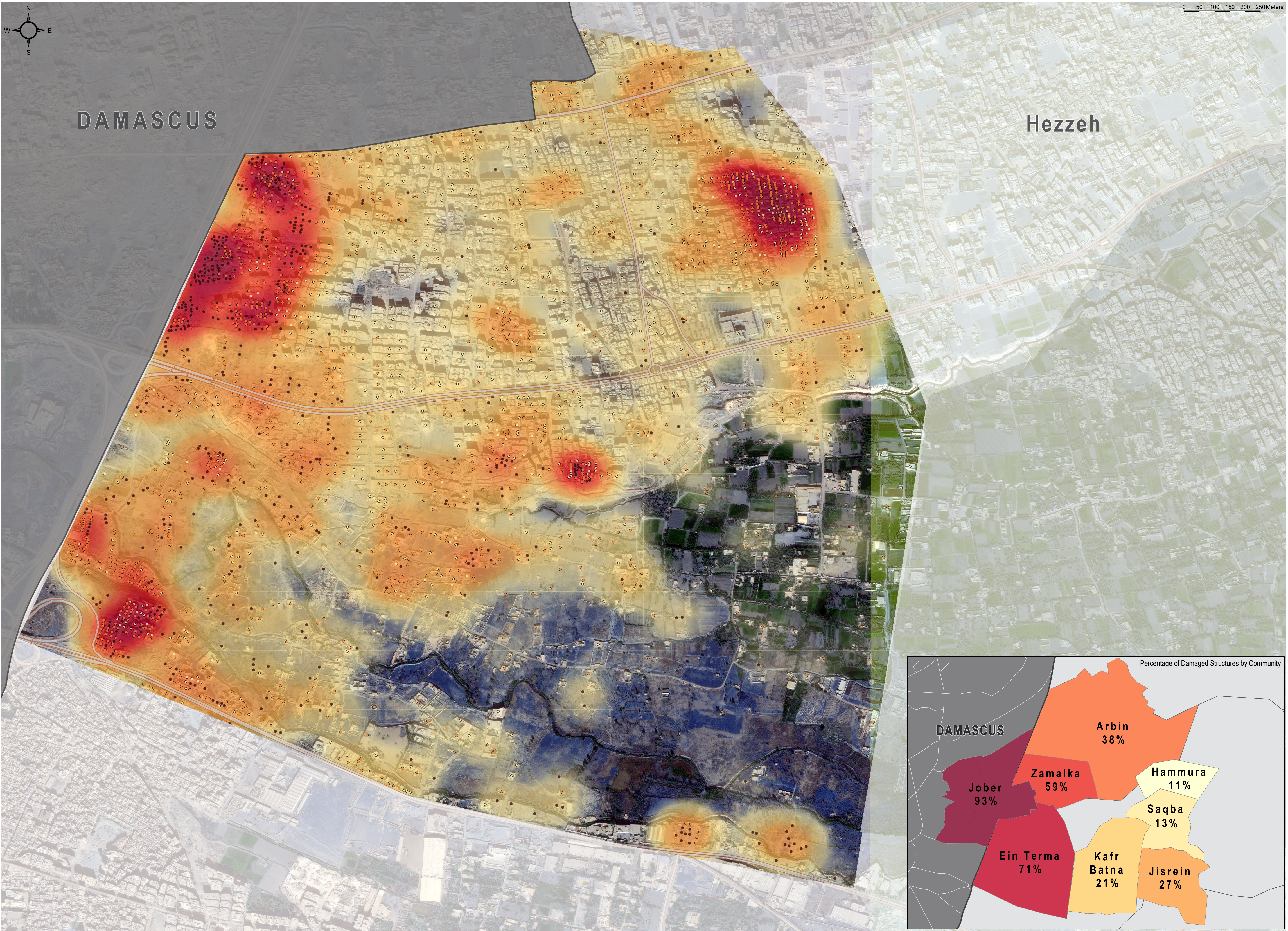
18,500 total population
of which 9,000 are IDPs

75-99% of preconflict population displaced from community

1-25% of remaining population are female

Ein Terma is a community in Eastern Ghouta, an agricultural region east of Damascus, that has been classified by the United Nations as besieged since 2013. With an increase in conflict in the adjacent Damascus neighbourhood of Jobar in March 2017, Ein Terma began to host a significant IDP population. By June 2017 as the offensive shifted towards Ein Terma, this resulted in a sharp increase in shelling and airstrikes and further displacement of both Ein Terma residents and hosted IDPs to other communities within Eastern Ghouta. Since August 2017 the water network has been unavailable when it was reportedly struck, while the electricity network has been unavailable since assessments of the community by REACH began in June 2016. Of the ten communities assessed by REACH in Eastern Ghouta, Ein Terma is one of only four that have at least one pre-conflict hospital that is still functioning. Available educational facilities include pre-conflict primary, secondary, and high schools. Informal schools have also reportedly been up since the conflict began to protect students and teachers from the risk of shelling. During the month of November 2017, schools in Ein Terma and across Eastern Ghouta reportedly closed due to the risk of shelling.

Date source:
The above data was collected by REACH Initiative in late December 2017 (or in previous assessed months when specified) using the Community Profiles methodology, in which information is gathered from Community Representatives (CRs) residing within assessed communities who have sector-specific knowledge. Findings were triangulated through secondary sources, including humanitarian reports, and news and social media monitoring.



Damage Severity Density



* Severity calculated based on density of damaged infrastructure and weighted by scale of damaged based on; destroyed, severely damaged, or moderate damage.

Structure Damage Class

- Low
- Destroyed
- Severe Damage
- Moderate Damage

Satellite Data (1): WorldView-3 from 03 December 2017
Copyright: DigitalGlobe, Inc
Source: US Department of State, Humanitarian Information Unit, NextView License
Road Data: OpenStreetMap
Admin Data: UN OCHA
Analysis: UNITAR-UNOSAT
Production: REACH Initiatives

Analysis Conducted comparing:
Satellite Data (1): WorldView-3 from 03 December 2017
Copyright: DigitalGlobe, Inc
Source: US Department of State, Humanitarian Information Unit, NextView License

Satellite Data (2): WorldView-2 from 20 November 2017
Copyright: DigitalGlobe, Inc
Source: US Department of State, Humanitarian Information Unit, NextView License

Note: Data, designations and boundaries contained on this map are not warranted to be error-free and do not imply acceptance by the REACH partners, associates or donors mentioned on this map.