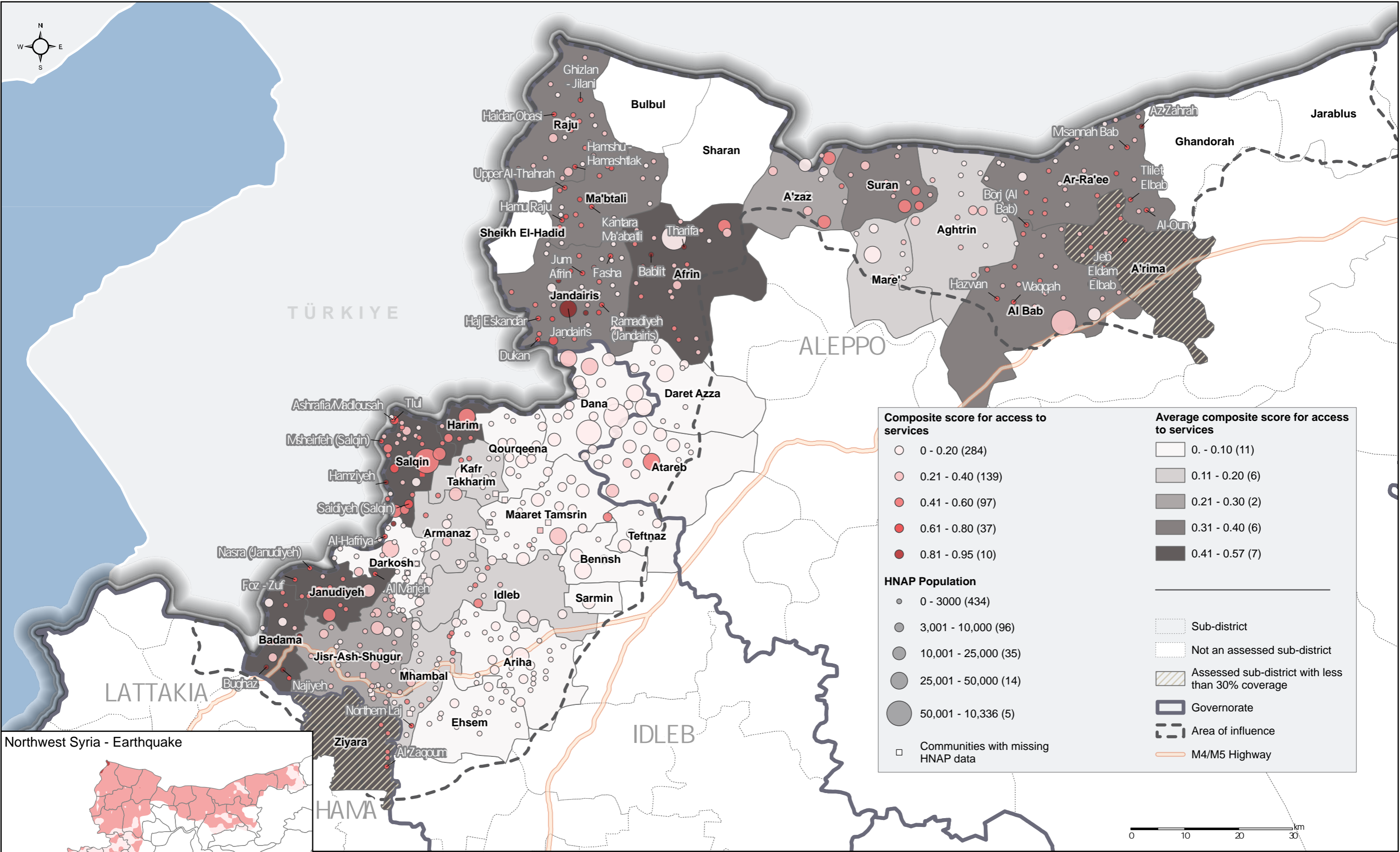


# Access of Households to Key Services

## Composite score of KI access estimates for key types of services

For Humanitarian Purposes Only  
Production date : 14 February 2023



**Composite score for access to services**

- 0 - 0.20 (284)
- 0.21 - 0.40 (139)
- 0.41 - 0.60 (97)
- 0.61 - 0.80 (37)
- 0.81 - 0.95 (10)

**HNAP Population**

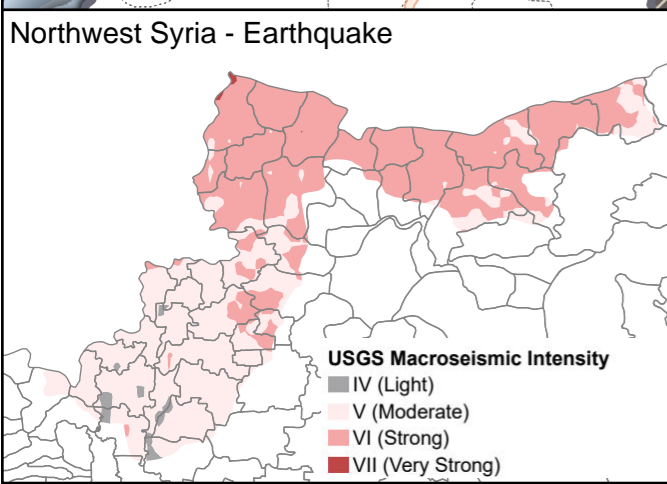
- 0 - 3000 (434)
- 3,001 - 10,000 (96)
- 10,001 - 25,000 (35)
- 25,001 - 50,000 (14)
- 50,001 - 10,336 (5)

**Average composite score for access to services**

- 0. - 0.10 (11)
- 0.11 - 0.20 (6)
- 0.21 - 0.30 (2)
- 0.31 - 0.40 (6)
- 0.41 - 0.57 (7)

**Legend:**

- Sub-district
- Not an assessed sub-district
- Assessed sub-district with less than 30% coverage
- Governorate
- Area of influence
- M4/M5 Highway
- Communities with missing HNAP data



The Access Score combines information on the proportion of people in the community that were able to access services for water, health, electricity, sanitation, telecommunications/internet, education, and markets. Water, health, and markets are weighted twice as highly. A score of 1 indicates that nobody in the community was able to access any of the services. A score of 0 indicates that all services were accessible by all households, or that the community was not impacted by the earthquakes.

**Data sources:**

- REACH NWS Earthquake Rapid Needs Assessment, February 2023
- OCHA Administrative boundaries and communities
- HNAP Community population estimation
- USGS Macroseismic Intensity ShakeMaps clipped to the area of influence
- ©OpenStreetMap Contributors roads

Coordinate System: GCS WGS 1984

*Note: Data, designations and boundaries contained on this map are not warranted to be error-free and do not imply acceptance by the REACH partners, associates, donors mentioned on this map.*

