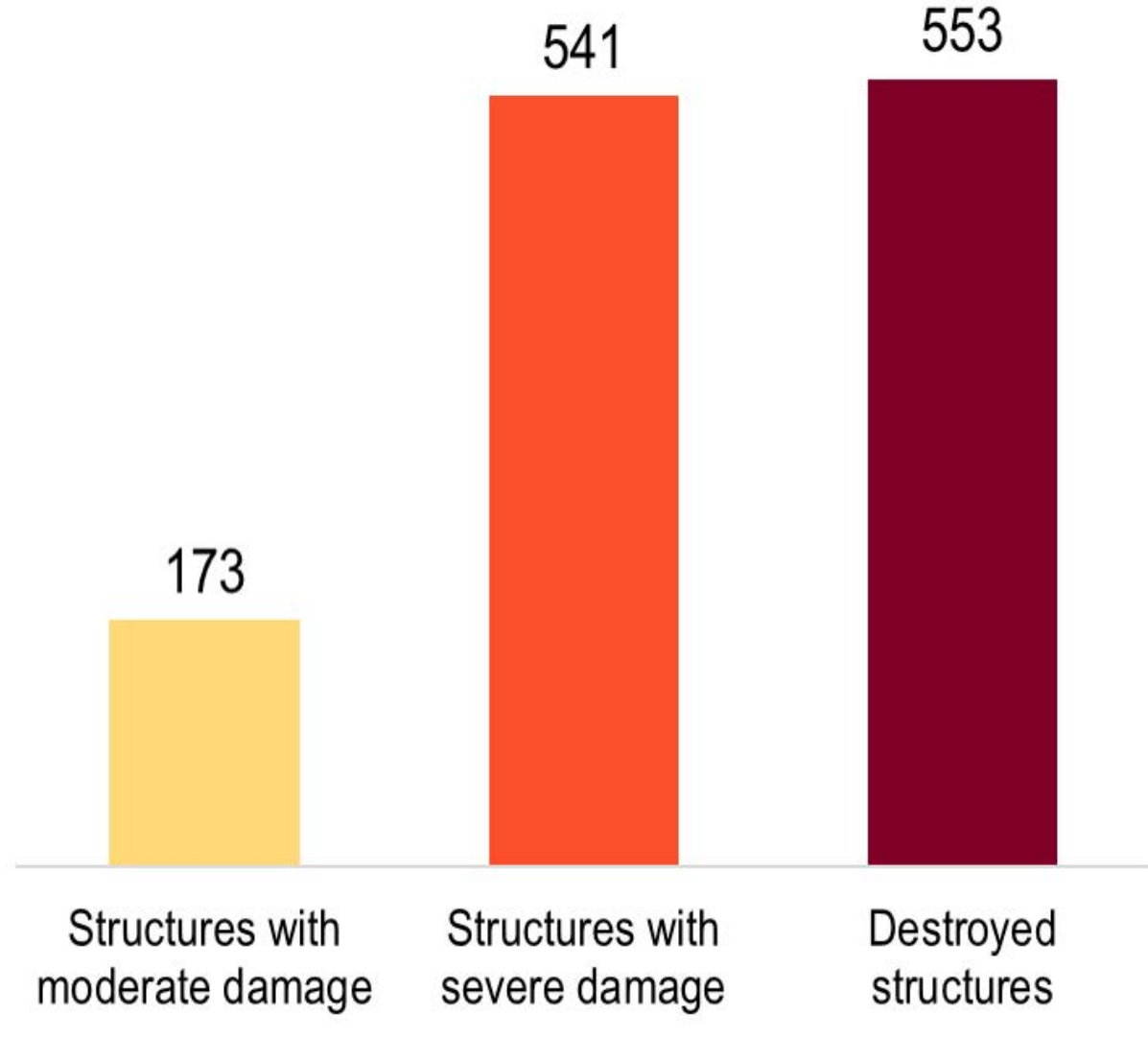


### Zamalka Summary

**59%** of Structures Damaged or Destroyed

Structure count by damage severity



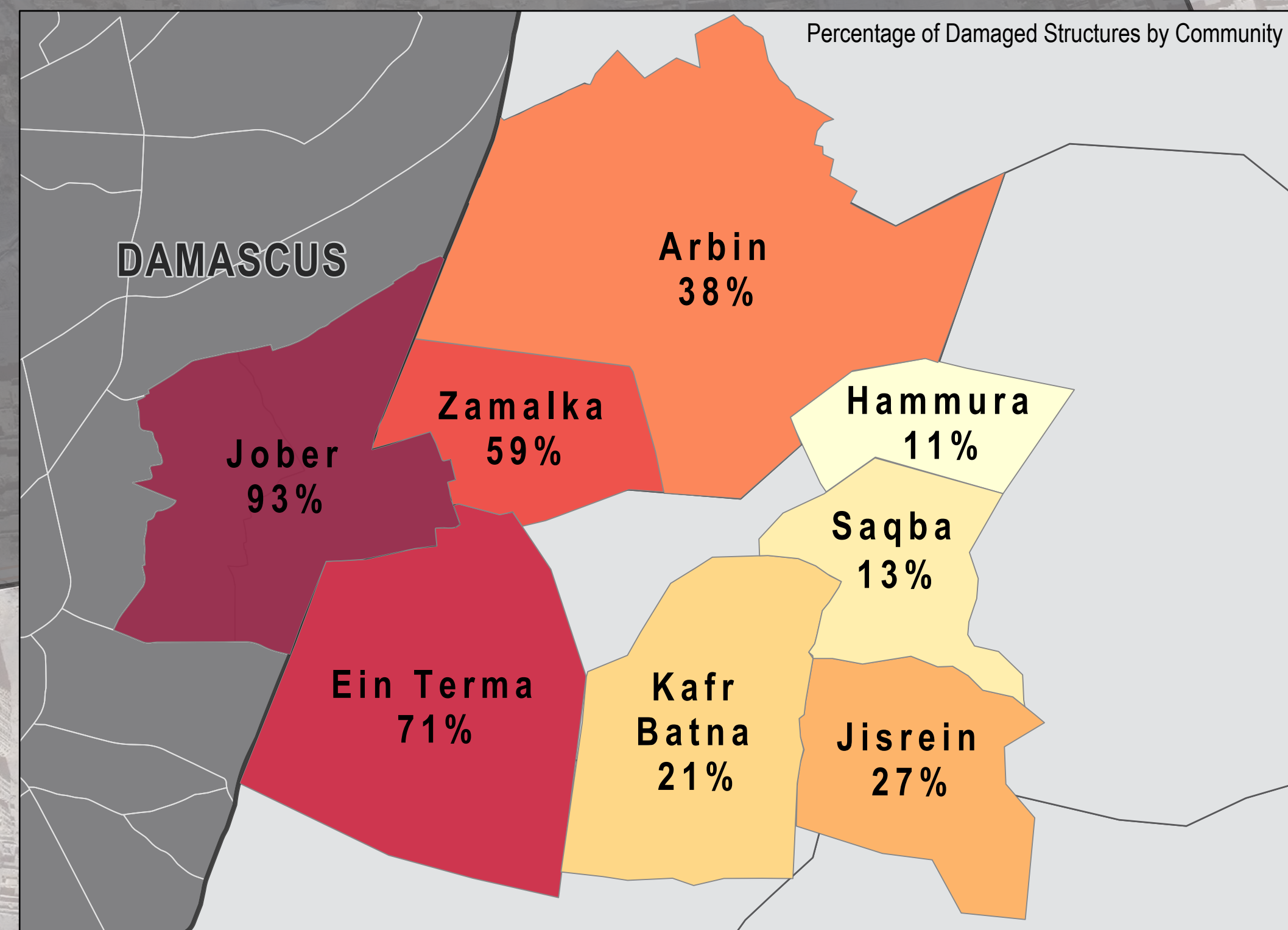
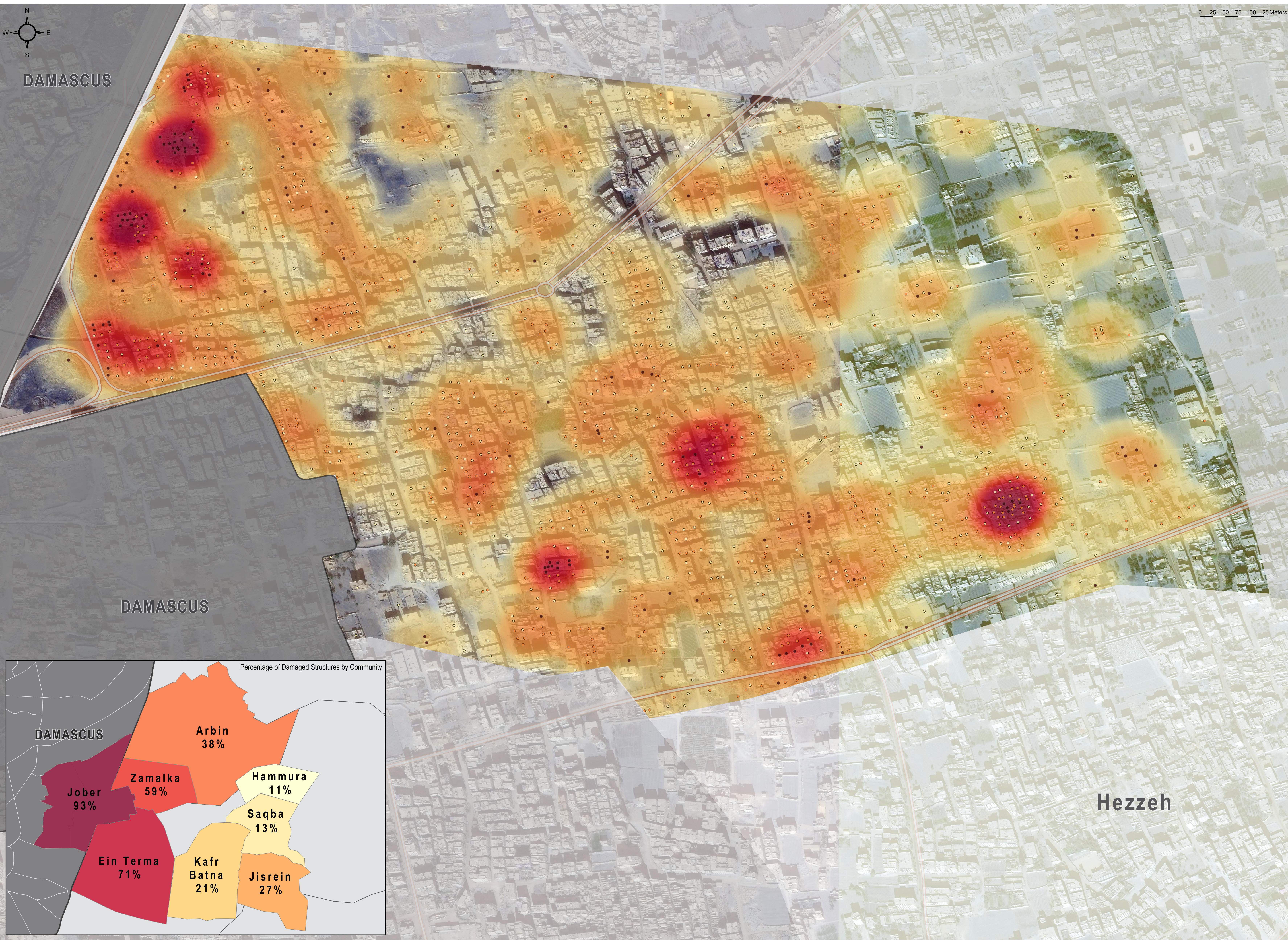
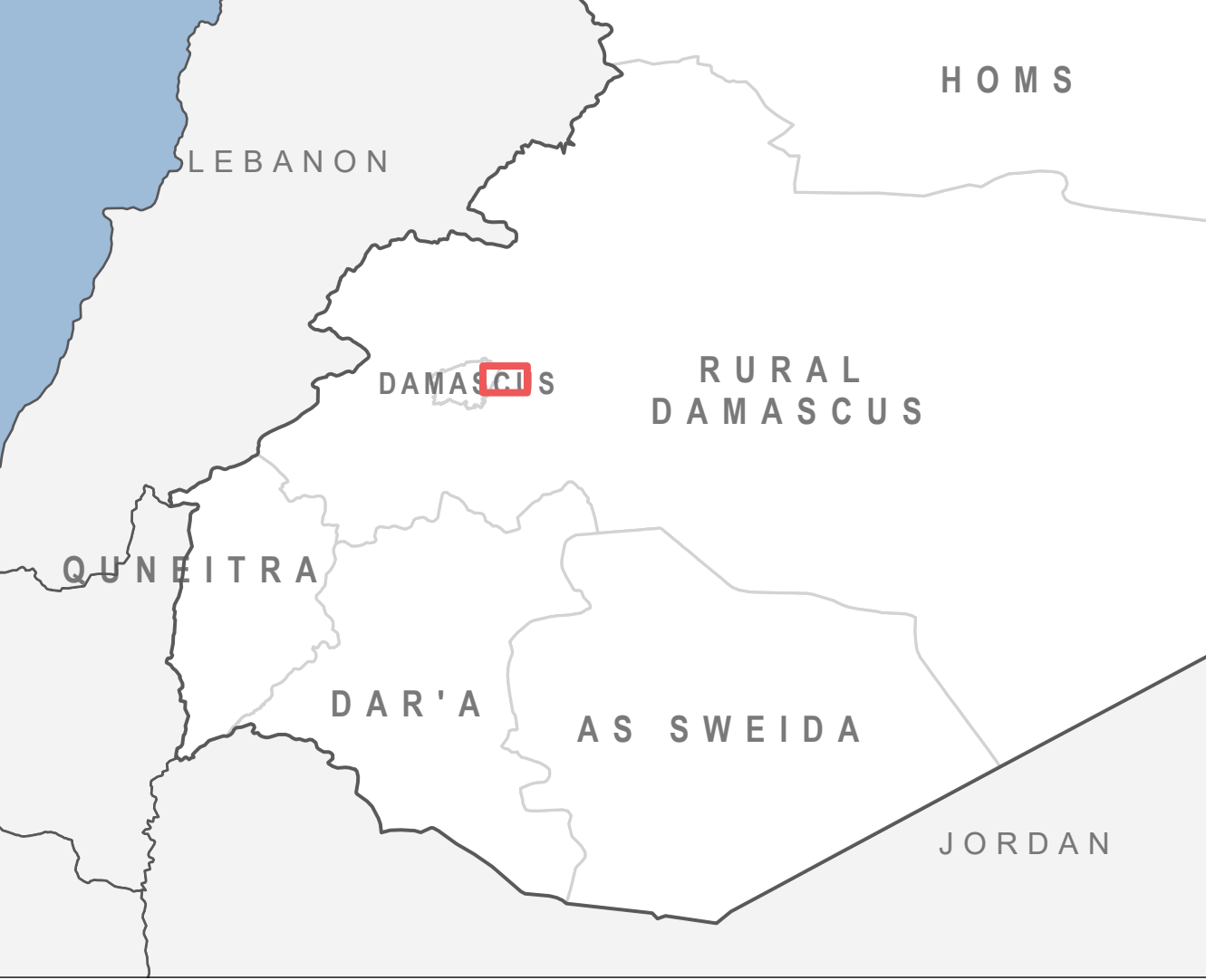
**13,500 total population**  
of which 3,650 are IDPs

**75-99% of preconflict population displaced from community**

**1-25% of remaining population are female**

Zamalka is a community located in central Eastern Ghouta, an agricultural region east of Damascus that has been classified by the United Nations as besieged since 2013. The regions sits directly east of the Damascus neighbourhood of Jober, the latter of which has been a site of active conflict of varying degrees for the majority, if not all, of the assessment period. According to the satellite imagery analysis, Zamalka has the third highest rate of damaged structures of the area assessed. There are reportedly mobile clinics/field hospitals and informal emergency care points available in the community for medical care, while educational facilities reportedly include pre-conflict primary, secondary, and high schools. Schools across Eastern Ghouta reportedly closed during the month of November 2017 due to the risk of shelling, and medical facilities across Syria have reportedly been struck in increasing frequency at the end of 2017, including some in Eastern Ghouta. Access to the water and electricity networks has not been reported since assessments of the community began in June 2016.

Data source:  
The above data was collected by REACH Initiative in late December 2017 (or in previous assessed months when specified) using the Community Profiles methodology, in which information is gathered from Community Representatives (CRs) residing within assessed communities who have sector-specific knowledge. Findings were triangulated through secondary sources, including humanitarian reports, and news and social media monitoring.



### Damage Severity Density

**High**

\* Severity calculated based on density of damaged infrastructure and weighted by scale of damaged based on; destroyed, severely damaged, or moderate damage.

### Structure Damage Class

- Destroyed
- Severe Damage
- Moderate Damage

Satellite Data (1): WorldView-3 from 03 December 2017  
Copyright: DigitalGlobe, Inc  
Source: US Department of State, Humanitarian Information Unit, NextView License  
Road Data: OpenStreetMap  
Admin Data: UN OCHA  
Analysis: UNITAR-UNOSAT  
Production: REACH Initiatives

Analysis Conducted comparing:  
Satellite Data (1): WorldView-3 from 03 December 2017  
Copyright: DigitalGlobe, Inc  
Source: US Department of State, Humanitarian Information Unit, NextView License

Satellite Data (2): WorldView-2 from 20 November 2017  
Copyright: DigitalGlobe, Inc  
Source: US Department of State, Humanitarian Information Unit, NextView License

Note: Data, designations and boundaries contained on this map are not warranted to be error-free and do not imply acceptance by the REACH partners, associates or donors mentioned on this map.