

NORTHWEST SYRIA MARKET MONITORING EXERCISE

Snapshot: 7-14 September 2020

INTRODUCTION

To inform humanitarian cash programming, REACH, in partnership with the Cash Working Group (CWG), conducts monthly Market Monitoring Exercises in northern Syria to assess the availability and prices of 36 basic commodities that are typically sold in markets and consumed by average Syrian households, including food and non-food items, water, fuel, and cellphone data.

Of these, 18 items comprise the Survival Minimum Expenditure Basket (SMEB; see below), which represents the minimum, culturally adjusted items required to support a 6-person household for a month.

Data collection took place between 7-14 September 2020 and was conducted by ACTED, CARE-Shafak, GOAL, People In Need, REACH, Samaritans Purse, Solidarites International, the Syrian Association for Relief and Development and Violet.

The accompanying data is disseminated monthly and is distributed through partners across the humanitarian community. See REACH Resource Centre for the [September 2020 data](#).

SURVIVAL MINIMUM EXPENDITURE BASKET (SMEB) CONTENTS

	Item	Quantity
Food Items	Bread	37 kg
	Bulgur	15 kg
	Chicken	6 kg
	Eggs	6 kg
	Fresh vegetables	12 kg
	Ghee/vegetable oil	7 kg/L
	Red lentils	15 kg
	Rice	19 kg
	Salt	1 kg
	Sugar	5 kg
	Tomato paste	6 kg
Hygiene items	Bathing soap	12 bars
	Laundry/dish soap	3 kg
	Sanitary pads	4 packs of 10
	Toothpaste	200 g
Fuel	Cooking fuel*	25 L
Water	Water trucking	4500 L
Telecom	Smartphone data	1 GB
Other	Float (other costs)**	7.5% total value

* Kerosene in northern Syria

** Float only applied to observations where prices of all SMEB contents could be collected

KEY DEVELOPMENTS

Coverage and data collection dates; monitoring of winterisation items began

In September 2020, REACH and partners covered 33 sub-districts and 2,620 individual shops in northwest Syria (NWS) for the Market Monitoring Exercise. REACH and partners also started to monitor various winterisation items in anticipation of the upcoming winter season. In light of the fluctuation of the Syrian Pound (SYP)'s value and resulting market disruption, prices in the Market Monitoring dataset and output should be seen as representative only of the markets and dates where and when information was collected (7-14 September).

Highest northwest SMEB SYP cost recorded; SMEB USD increased

In September, across comparable communities with consistent coverage since August (see Methodology), the value of the regional SMEB reached 227,682 SYP / 107

United States Dollars (USD), a 2% increase compared to August and 97% increase since March 2020, setting the highest recorded price in the Market Monitoring Exercise in NWS.

Slight appreciation of the SYP against the USD

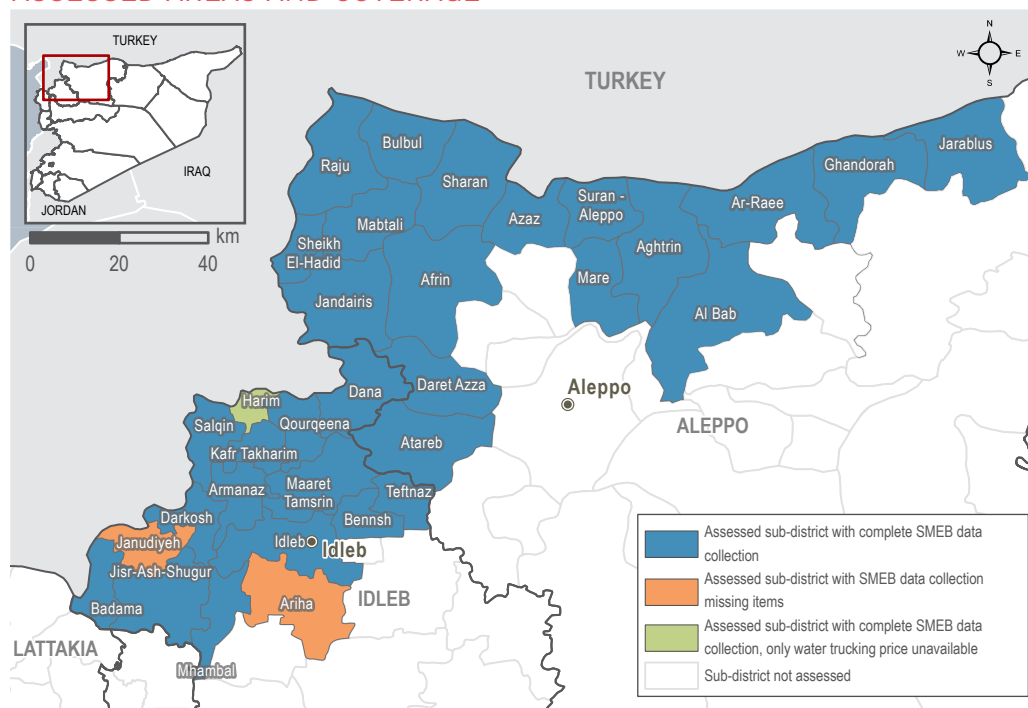
During data collection in September, the informal USD/SYP exchange rate was recorded at 2,125 USD/SYP, a 2% decrease since August. However, the six-month change, a 97% increase since March, demonstrates that the USD/SYP informal exchange rate remained extremely high. The highest exchange rate was recorded at 2,200 SYP to 1 USD in Mare' community in Aleppo governorate.

Fuel prices remained unchanged; manually refined petrol and kerosene remained widely unavailable

In September, the median price of transport fuels remained at the same level as in August at the regional

level, recording 1,193 SYP per litre. The price of manually refined kerosene (used for cooking) decreased by 9% since August. Meanwhile, the price of high quality petrol and diesel remained unchanged over the past month. The median price of manually refined petrol similarly remained unchanged whilst manually refined diesel decreased slightly by 1% since August. Nevertheless, surveyed vendors selling fuel and gas reported a continued scarcity of manually refined kerosene and petrol, with 50% reporting that manually refined kerosene was unavailable in their market, and 79% reporting the same for manually refined petrol. According to REACH field teams, the scarcity of manually refined products in NWS was offset by the availability of high quality fuel imports and people's persisted reliance on liquefied petroleum gas, along with the slight improvement of the informal exchange rate of SYP against the USD.

ASSESSED AREAS AND COVERAGE

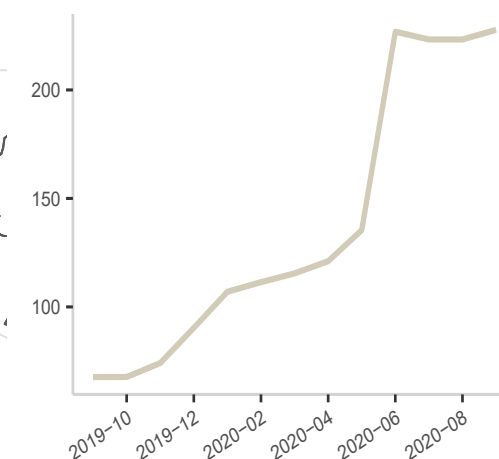


MEDIAN SMEB COST IN SYP (USD), BY REGION

227,682 SYP (107 USD) | NORTHWEST SYRIA - IDLEB, WESTERN & NORTHERN ALEPPO GOVERNORATES

MEDIAN SMEB COSTS, BY MONTH

Thousand Syrian Pounds



KEY DEVELOPMENTS

227,682 SYP (107 USD) **NORTHWEST SYRIA - IDLEB, WESTERN & NORTHERN ALEPPO GOVERNORATES**

Food item prices slightly increased

In September, the cost of the regional SMEB food component reached 158,130 SYP, a small 3% increase since August and 100% increase since March 2020. Specifically, the SMEB vegetable/fresh food component increased by 12% since August. The end of the local agricultural season and stocking practice in preparation for the winter were reported by field teams as the main factors contributing to the inflation in vegetable prices compared to August. As with the regional SMEB, the SMEB food value increased from 71 USD to 74 USD, a small increase of 4%. Field teams reported that vendors kept their prices high to avoid potential losses due to the ongoing fluctuation of the informal exchange rate. In addition, among vendors who reported supply challenges during the Market Monitoring Exercise, 73% reported price inflation as their main supply challenge (see page 10 for Market Functionality findings). Nonetheless, the median prices of bulk food items remained either unchanged or decrease since August. For example, the price of red lentils and salt remained at the same level whilst bulgur decreased by 5% and oil by 2% since August. This could be explained by the lack of demand for bulk food in September, the availability of these items from relief distribution and the increased difficulty to sell the locally produced bulk food to the Government of Syria (GoS)-held areas due to road closure, as reported by REACH

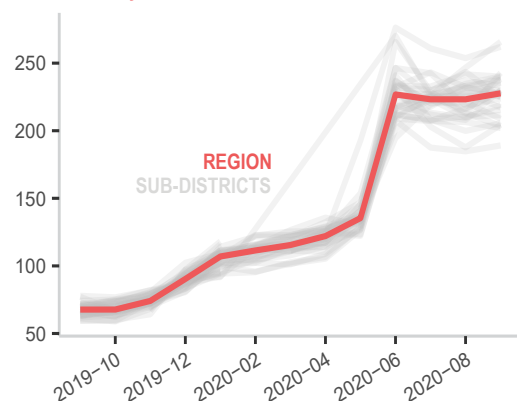
field teams. Prices of flour and bread also remained relatively stable. Flour remained at 800 SYP since August, and a bag of 8 pieces of bread increased slightly by 5%, reaching a median of 590 SYP. Field teams reported that bread subsidies and strict enforcement of price ceiling by local authorities since bread bundle began to be sold in Turkish Lira (TRY) as well as the free distribution of bread in the region's countryside have contributed to the price stability. Finally, other SMEB basic food items, such as eggs (40% increase) and tomato paste (10% increase), have seen their prices continue to soar since August.

Hygiene items prices increased

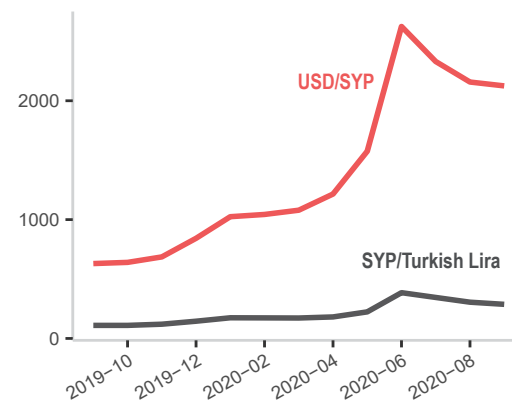
This month, the SMEB hygiene component increased by 8% at the regional level, reaching a median of 13,071 SYP. More specifically, prices of bathing soap increased by 25% since August and laundry soap by 6%. These price increases could be attributed to the soaring demand for hygiene items to prevent the spread of COVID-19, according to REACH field teams.

MEDIAN SMEB COSTS, BY MONTH

Thousand Syrian Pounds



EXCHANGE RATES, BY MONTH & CURRENCY



MEDIAN SMEB COSTS & CHANGES*

Syrian Pounds

Sub-district	SMEB	One month change	Six month change	Sub-district	SMEB	One month change	Six month change
Northwest Syria	227,682	2%	97%	Idleb	229,741	-1%	107%
Afrin	205,544	3%	86%	Jandairis	225,669	-1%	103%
Aghtrin	202,001	-2%	99%	Janudiyeh	NA	NA	NA
Al Bab	208,805	-6%	84%	Jarablus	215,737	2%	91%
Ariha	NA	NA	NA	Jisr-Ash-Shugur	235,586	4%	99%
Armanaz	233,087	-2%	90%	Kafr Takharim	242,784	14%	107%
Ar-Ra'ee	204,409	9%	102%	Maaret Tamsrin	237,610	2%	106%
Atareb	262,109	3%	NA	Ma'tali	189,107	2%	51%
A'zaz	223,910	3%	84%	Mare'	229,577	6%	106%
Badama	240,017	-1%	109%	Mhambal	217,168	-5%	86%
Bennsh	224,851	-8%	95%	Qourqeena	228,209	1%	87%
Bulbul	227,155	-2%	104%	Raju	240,195	2%	115%
Dana	239,449	3%	106%	Salqin	224,859	-3%	86%
Daret Azza	211,561	1%	72%	Sharan***	238,188	9%	121%
Darkosh	230,010	11%	82%	Sheikh El-Hadid***	229,187	6%	89%
Ghandorah	219,231	5%	114%	Suran	203,562	-5%	75%
Harim**	221,853	3%	113%	Teftnaz	265,759	8%	NA

* For price and change calculations, only the communities within a sub-district with consistent coverage across months are included.

** SMEB calculated without water trucking component.

*** For the change calculation of these sub-districts, more than 25% of the SMEB items median prices rely on less than 3 observations.

Note: Lack of data for a SMEB item does not necessarily imply a shortage.

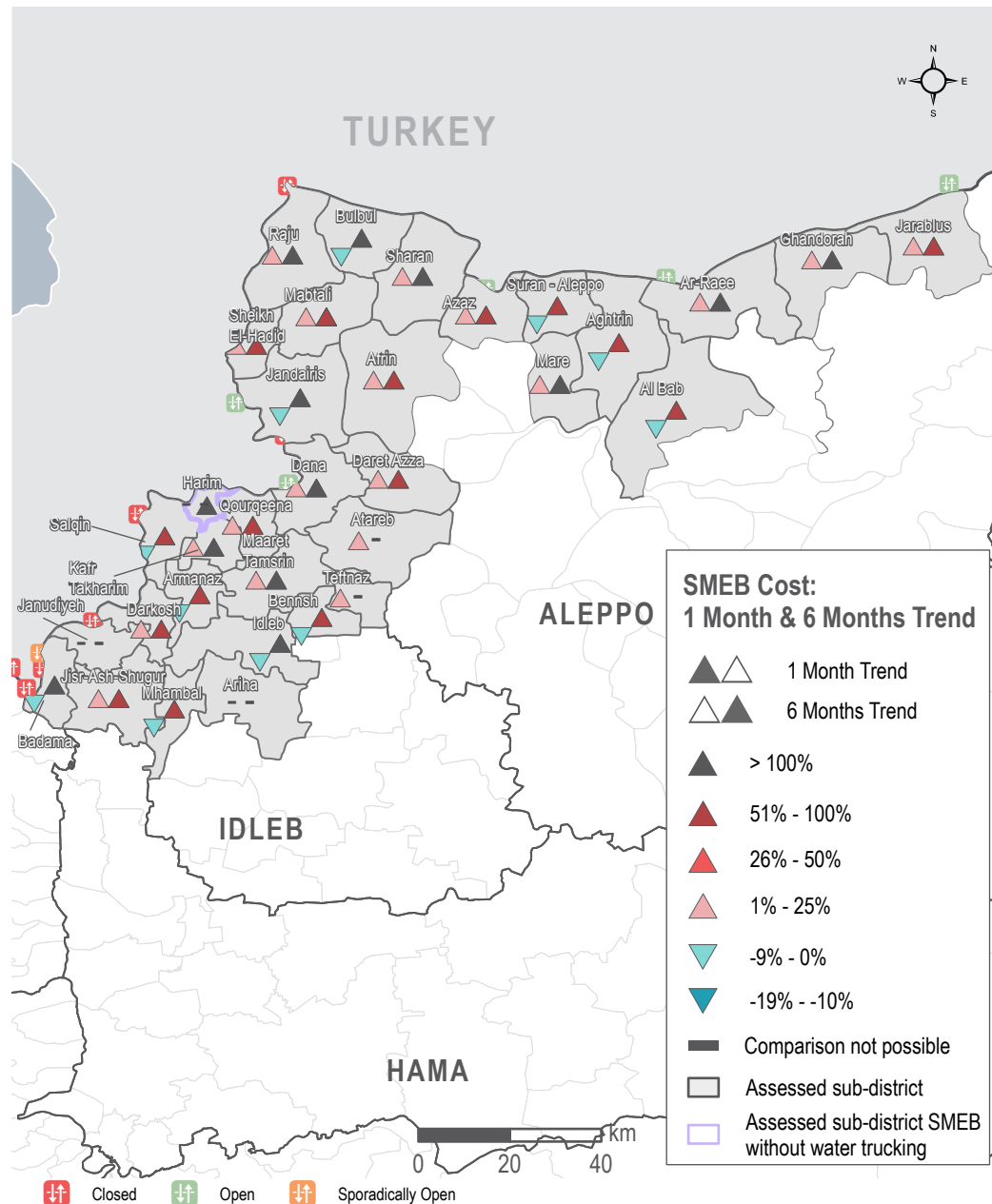
SUB-DISTRICTS WITH INCOMPLETE SMEB IN SEPTEMBER

Ariha Bread, Manually refined kerosene

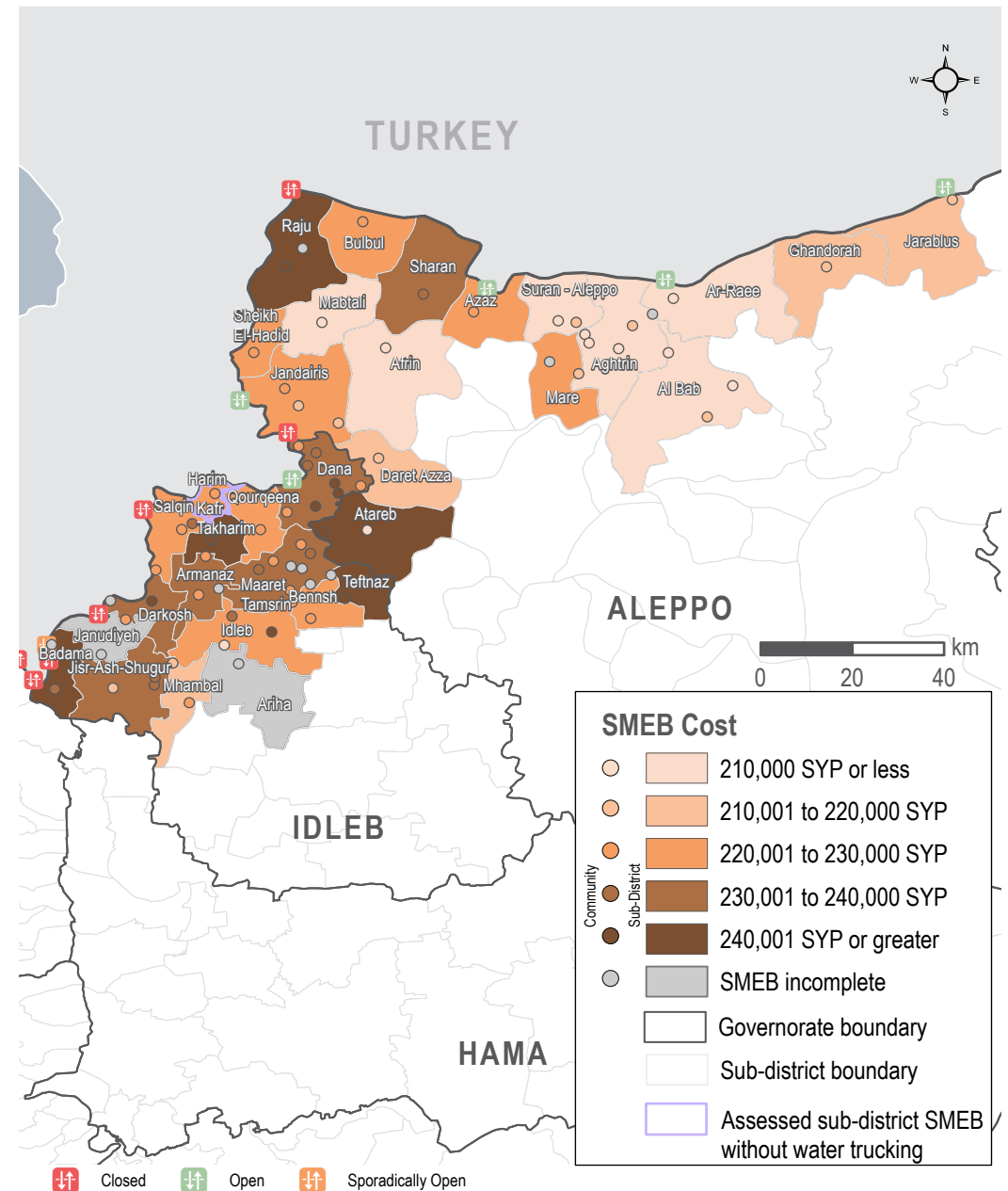
Janudiyeh Manually refined kerosene, Toothpaste

Note: Lack of data for a SMEB item does not necessarily imply a shortage.

SMEB COST: ONE MONTH & SIX MONTHS TREND



SMEB COST RANGES (SYP), BY SUB-DISTRICTS & COMMUNITIES



MEDIAN SMEB COST: FOOD ITEMS

See Page 1, Syrian Pounds

Sub-district	SMEB Food	One month change	Six month change
Northwest Syria	158,130	3%	100%
Afrin	149,204	2%	90%
Aghtrín	137,971	-3%	92%
Al Bab	138,800	-7%	73%
Ariha	NA	NA	NA
Armanaz	162,388	-2%	93%
Ar-Ra'ee	140,080	10%	98%
Atareb	181,222	5%	NA
A'zaz	151,023	2%	82%
Badama	164,105	1%	118%
Bennsh	165,875	-9%	100%
Bulbul	152,308	-1%	108%
Dana	164,043	4%	112%
Daret Azza	153,326	3%	75%
Darkosh	168,896	12%	95%
Ghandorah	148,871	6%	106%
Harim	154,350	3%	105%

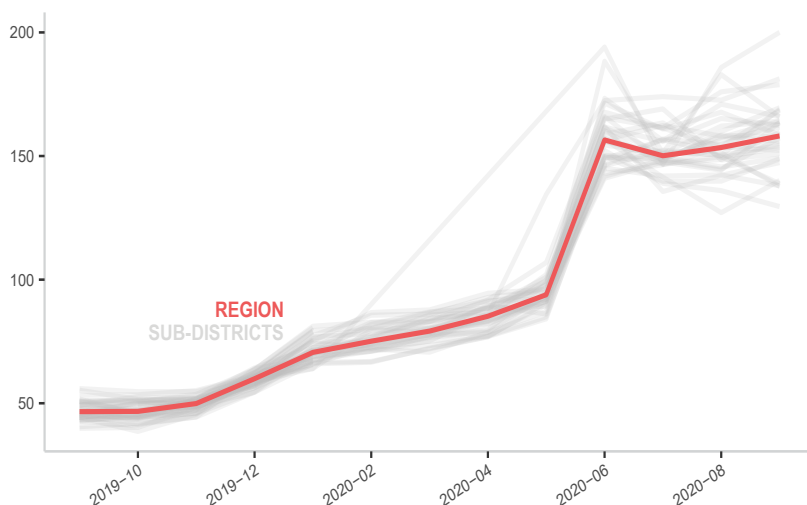
Sub-district	SMEB Food	One month change	Six month change
Idlib	165,913	-3%	117%
Jandairis	157,760	0%	96%
Janudiyeh	169,514	6%	113%
Jarablus	147,346	4%	91%
Jisr-Ash-Shugur	159,650	7%	102%
Kafr Takharim	168,419	10%	103%
Maaret Tamsrin	161,688	3%	108%
Ma'btali	129,553	-5%	49%
Mare'	163,275	6%	103%
Mhambal	158,500	-6%	97%
Qourqeena	155,038	1%	81%
Raju	178,883	2%	129%
Salqin	155,989	-1%	88%
Sharan	163,675**	13%	112%
Sheikh El-Hadid	157,325	9%	83%
Suran	137,710	-9%	78%
Taftnaz	200,025	8%	NA

* For these sub-districts, more than 25% of the SMEB Food items median prices rely on less than 3 observations.

** For these sub-districts, more than 50% of the SMEB Food items median prices rely on less than 3 observations.

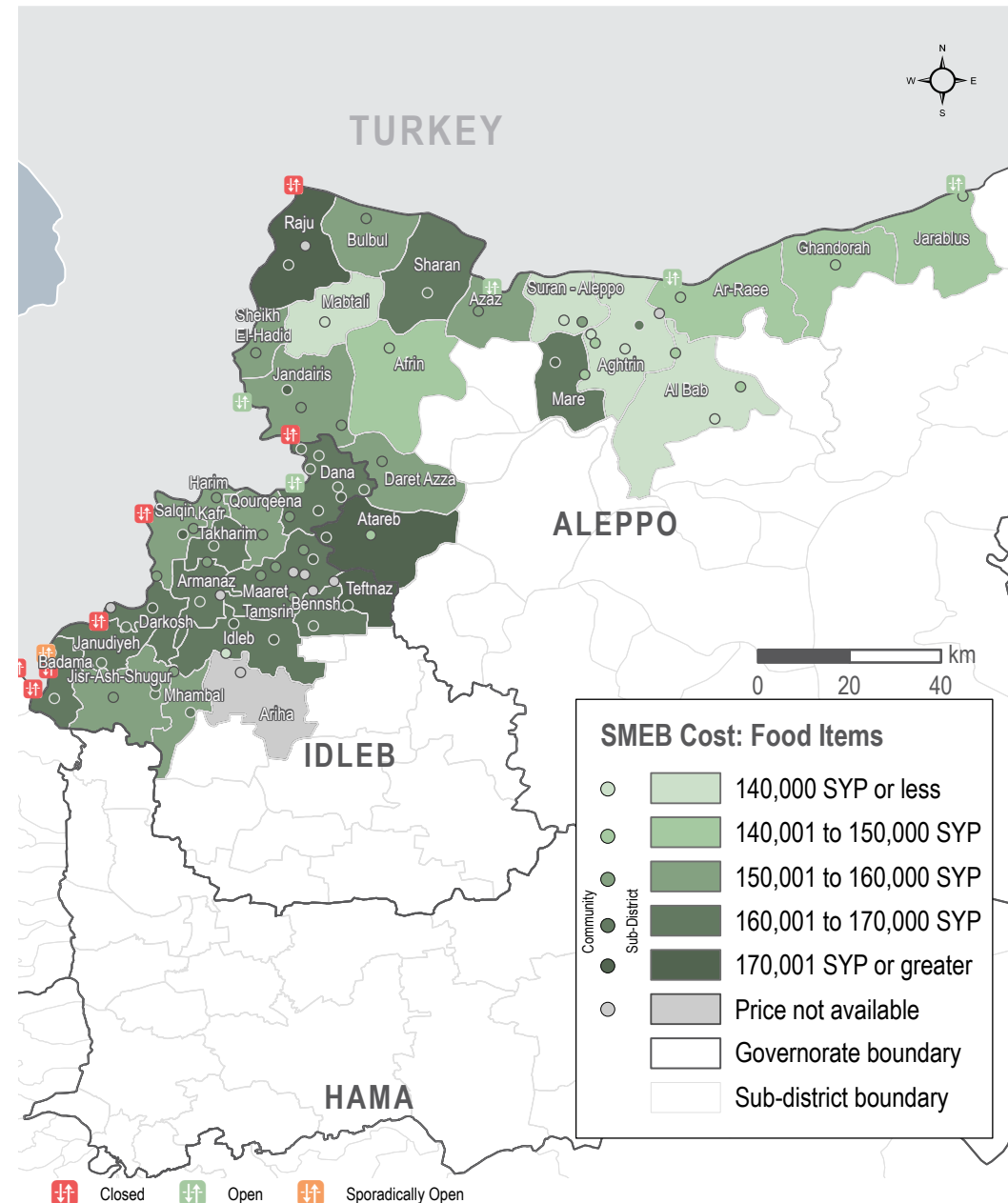
MEDIAN SMEB COST: FOOD ITEMS, BY MONTH

Thousand Syrian Pounds



SMEB FOOD ITEMS' COST

Sub-districts & Communities, Syrian Pounds



MEDIAN SMEB COOKING FUEL PRICE

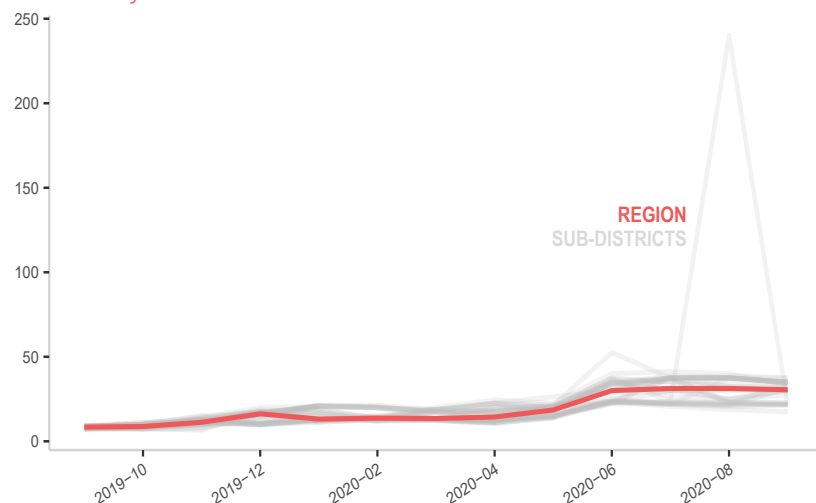
Kerosene 25L, Syrian Pounds

Sub-district	SMEB Cooking Fuel	One month change	Six month change	Sub-district	SMEB Cooking Fuel	One month change	Six month change
Northwest Syria	30,500	-2%	126%	Idlib	21,875	1%	65%
Afrin	17,500*	-7%	40%	Jandairis	35,000	-7%	162%
Aghtrín	30,000	-2%	145%	Janudiyeh	22,500	-3%	29%
Al Bab	30,500	2%	149%	Jarablus	30,000	-8%	71%
Ariha	21,375*	-91%	58%	Jisr-Ash-Shugur	35,000	-7%	87%
Armanaz	35,313	-1%	88%	Kafr Takharim	35,000	60%	164%
Ar-Ra'ee	27,500	10%	116%	Maaret Tamsrin	35,000	-7%	100%
Atareb	32,500	0%	NA	Ma'b'tali	31,250	47%	150%
A'zaz	31,875	-2%	82%	Mare'	30,000	20%	134%
Badama	34,375	-8%	90%	Mhambal	22,875	-1%	71%
Bennsh	21,375	-6%	61%	Qourqeena	37,500	-3%	100%
Bulbul	35,000	-7%	104%	Raju	21,625	6%	65%
Dana	35,000	-7%	97%	Salqin	33,250	-17%	66%
Daret Azza	21,875	-2%	65%	Sharan	35,000	-7%	164%
Darkosh	21,750	2%	16%	Sheikh El-Hadid	34,250	-9%	158%
Ghandorah	30,000	-4%	122%	Suran	30,500	22%	74%
Harim	37,500	0%	178%	Teftnaz	22,125	-4%	NA

* For these sub-districts, the median prices of cooking fuels rely on less than 3 observations.

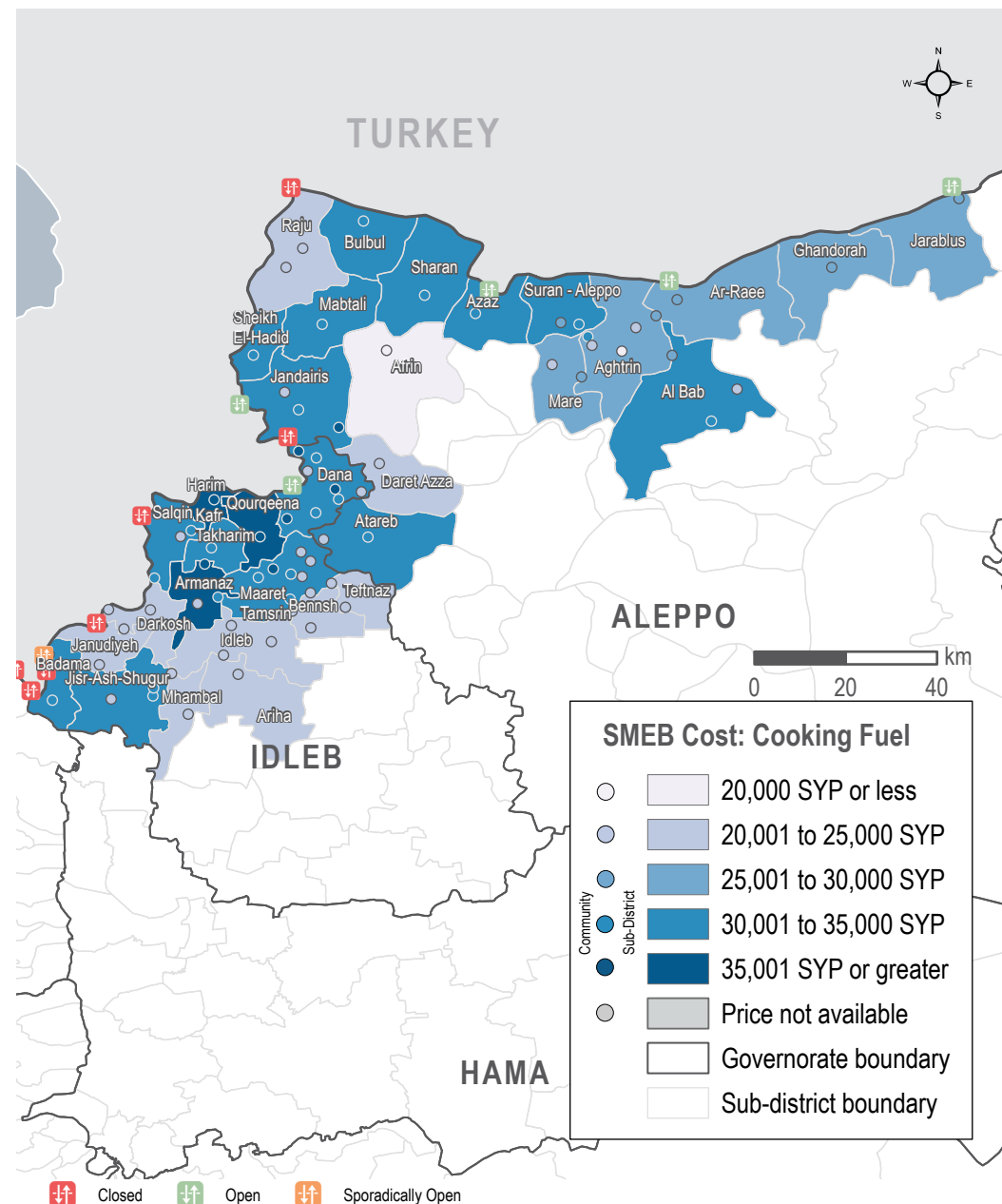
MEDIAN SMEB COOKING FUEL COSTS, BY MONTH

Thousand Syrian Pounds



SMEB COOKING FUEL COST

Sub-districts & Communities, Syrian Pounds



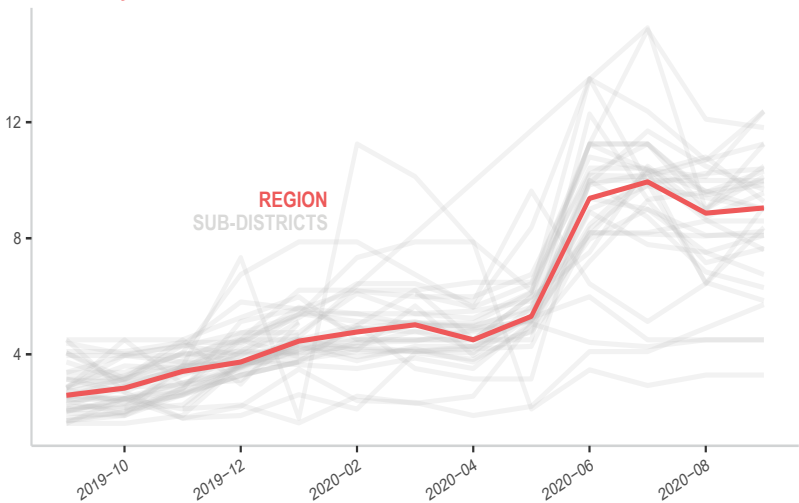
MEDIAN SMEB WATER TRUCKING PRICE

4,500L, Syrian Pounds

Sub-district	SMEB Water Truck	One month change	Six month change	Sub-district	SMEB Water Truck	One month change	Six month change
Northwest Syria	9,045	2%	80%	Idleb	12,375	16%	83%
Afrin	9,000	-7%	50%	Jandairis	5,715	17%	144%
Aghtrin	10,313	8%	103%	Janudiyeh	4,500	0%	0%
Al Bab	11,813	-2%	90%	Jarablus	12,375	22%	143%
Ariha	9,090	41%	41%	Jisr-Ash-Shugur	9,000	-4%	89%
Armanaz	7,650	7%	87%	Kafr Takharim	7,605	-12%	58%
Ar-Ra'ee	9,990	0%	100%	Maaret Tamsrin	10,395	2%	148%
Atareb	8,100	0%	NA	Ma'btali	3,285	0%	-68%
A'zaz	11,250	25%	108%	Mare'	8,235	2%	103%
Badama	9,675	-8%	71%	Mhambal	9,563	10%	21%
Bennsh	6,300	-8%	79%	Qourqeena	4,500	0%	95%
Bulbul	9,270	-14%	72%	Raju	9,855	4%	62%
Dana	8,100	8%	61%	Salqin	8,370	30%	116%
Daret Azza	6,750	-10%	52%	Sharan	8,595	0%	110%
Darkosh	9,968	4%	94%	Sheikh El-Hadid	10,485	17%	133%
Ghandorah	11,250	5%	163%	Suran	10,125	13%	63%
Harim	NA	NA	NA	Teftnaz	5,850	-10%	NA

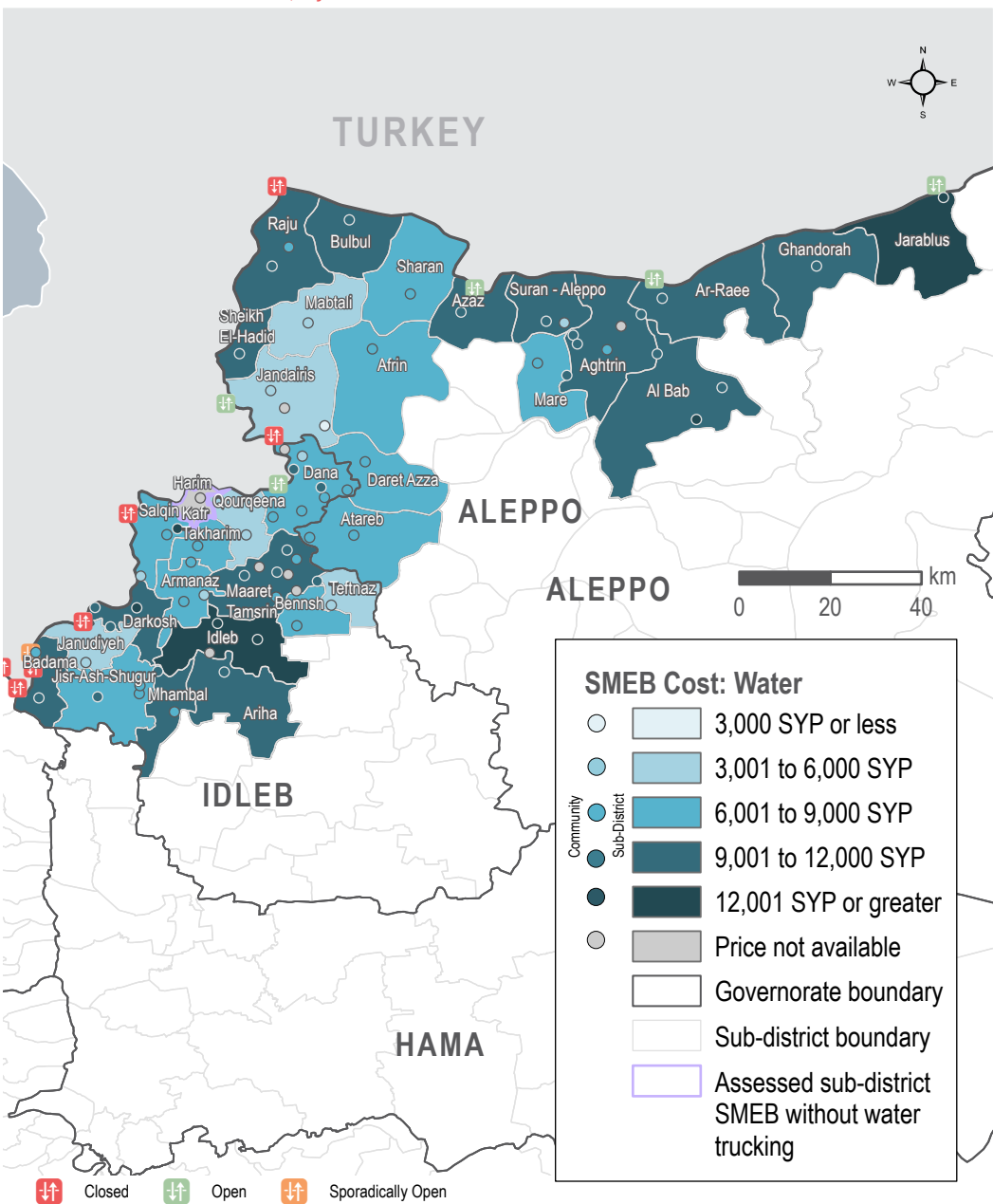
MEDIAN SMEB WATER TRUCKING COSTS, BY MONTH

Thousand Syrian Pounds



SMEB WATER TRUCKING COST

Sub-districts & Communities, Syrian Pounds



MEDIAN SMEB CELLPHONE DATA PRICE

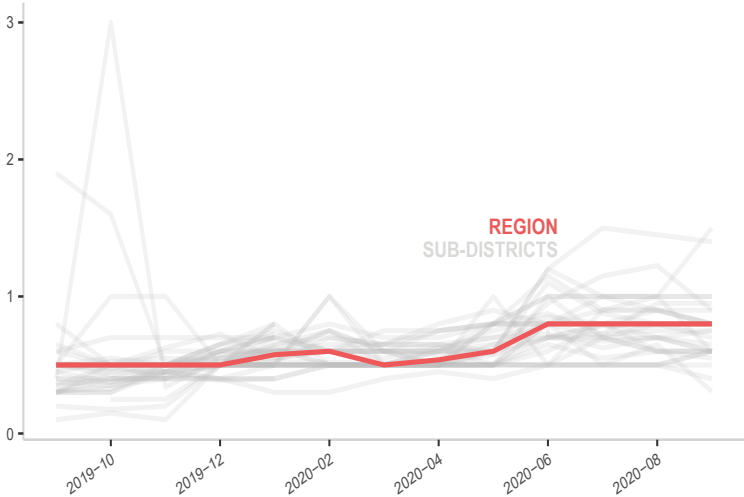
1GB data, Syrian Pounds

Sub-district	SMEB Data (1GB)	One month change	Six month change	Sub-district	SMEB Data (1GB)	One month change	Six month change
Northwest Syria	800	0%	60%	Idleb	600	20%	20%
Afrin	1,400	-3%	115%	Jandairis	550	-8%	-8%
Aghtrín	800	-11%	60%	Janudiyeh	600	20%	20%
Al Bab	600	-14%	0%	Jarablus	800	-11%	60%
Ariha	600	0%	0%	Jisr-Ash-Shugur	800	0%	33%
Armanaz	800	-11%	60%	Kafr Takharim	900	-27%	80%
Ar-Ra'ee	600	0%	20%	Maaret Tamsrin	750	0%	25%
Atareb	1,000	0%	NA	Ma'tbali	1,500	50%	114%
A'zaz	950	0%	27%	Mare'	700	-13%	17%
Badama	750	7%	25%	Mhambal	307	-53%	-23%
Bennsh	500	0%	0%	Qourqeena	650	-7%	18%
Bulbul	800	0%	23%	Raju	800*	0%	60%
Dana	800	2%	33%	Salqin	800	0%	60%
Daret Azza	900	0%	80%	Sharan	800	0%	23%
Darkosh	600	0%	20%	Sheikh El-Hadid	600	-14%	20%
Ghandorah	1,000	0%	100%	Suran	600	-40%	20%
Harim	800	0%	23%	Teftnaz	400	-20%	NA

* For these sub-districts, the median prices of cellphone data rely on less than 3 observations.

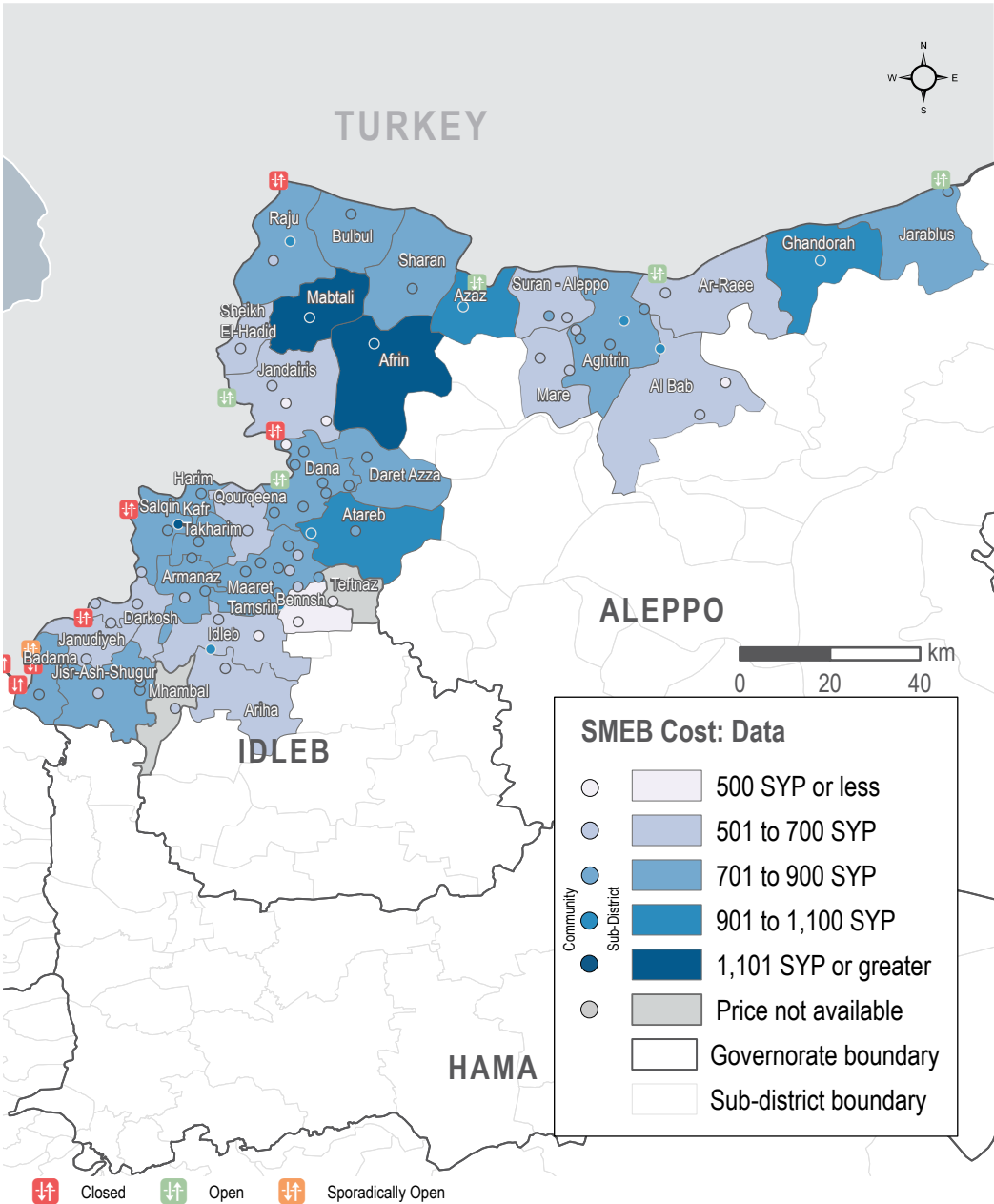
MEDIAN SMEB CELLPHONE DATA COST, BY MONTH

Thousand Syrian Pounds



SMEB CELLPHONE DATA COST

Sub-districts & Communities, Syrian Pounds



MEDIAN TRANSPORT FUEL PRICE

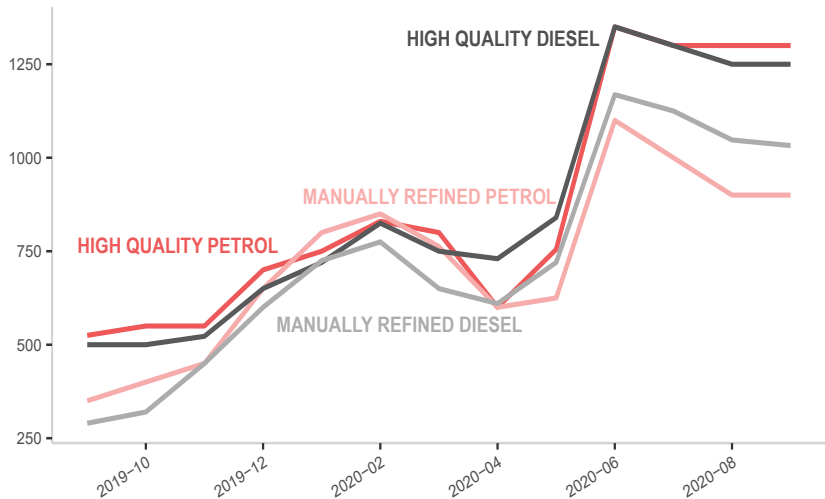
Diesel and Petrol, 1L (High Quality and Manually Refined), Syrian Pounds

Sub-district	Transport Fuel	One month change	Six month change	Sub-district	Transport Fuel	One month change	Six month change
Northwest Syria	1,193	0%	65%	Idleb	1,225	2%	88%
Afrin	1,017*	-5%	36%	Jandairis	1,175	-3%	52%
Aghtrín	1,034	-3%	59%	Janudiyeh	1,350*	2%	108%
Al Bab	1,049	-4%	NA	Jarablus	1,100	-4%	69%
Ariha	1,310*	6%	71%	Jisr-Ash-Shugur	1,192	1%	64%
Armanaz	1,250	-3%	68%	Kafr Takharim	1,246	-6%	71%
Ar-Ra'ee	1,063	-2%	NA	Maaret Tamsrin	1,214	1%	67%
Atareb	1,203	-1%	NA	Ma'bтали	1,250*	0%	NA
A'zaz	1,147	1%	50%	Mare'	1,131	3%	56%
Badama	1,213	-3%	83%	Mhambal	1,271	0%	NA
Bennsh	1,263	3%	NA	Qourqeena	1,253	-2%	71%
Bulbul	1,035*	-1%	59%	Raju	1,250*	5%	108%
Dana	1,255	5%	81%	Salqin	1,200	1%	54%
Daret Azza	1,172*	2%	80%	Sharan	1,183	0%	NA
Darkosh	1,169	1%	61%	Sheikh El-Hadid	1,083	-8%	NA
Ghandorah	1,063	-7%	NA	Suran	1,055	-1%	32%
Harim	1,300	8%	73%	Teftnaz	1,193	-4%	NA

* For these sub-districts, more than 50% of medians for the items composing the transport fuel indicator rely on less than 3 observations.

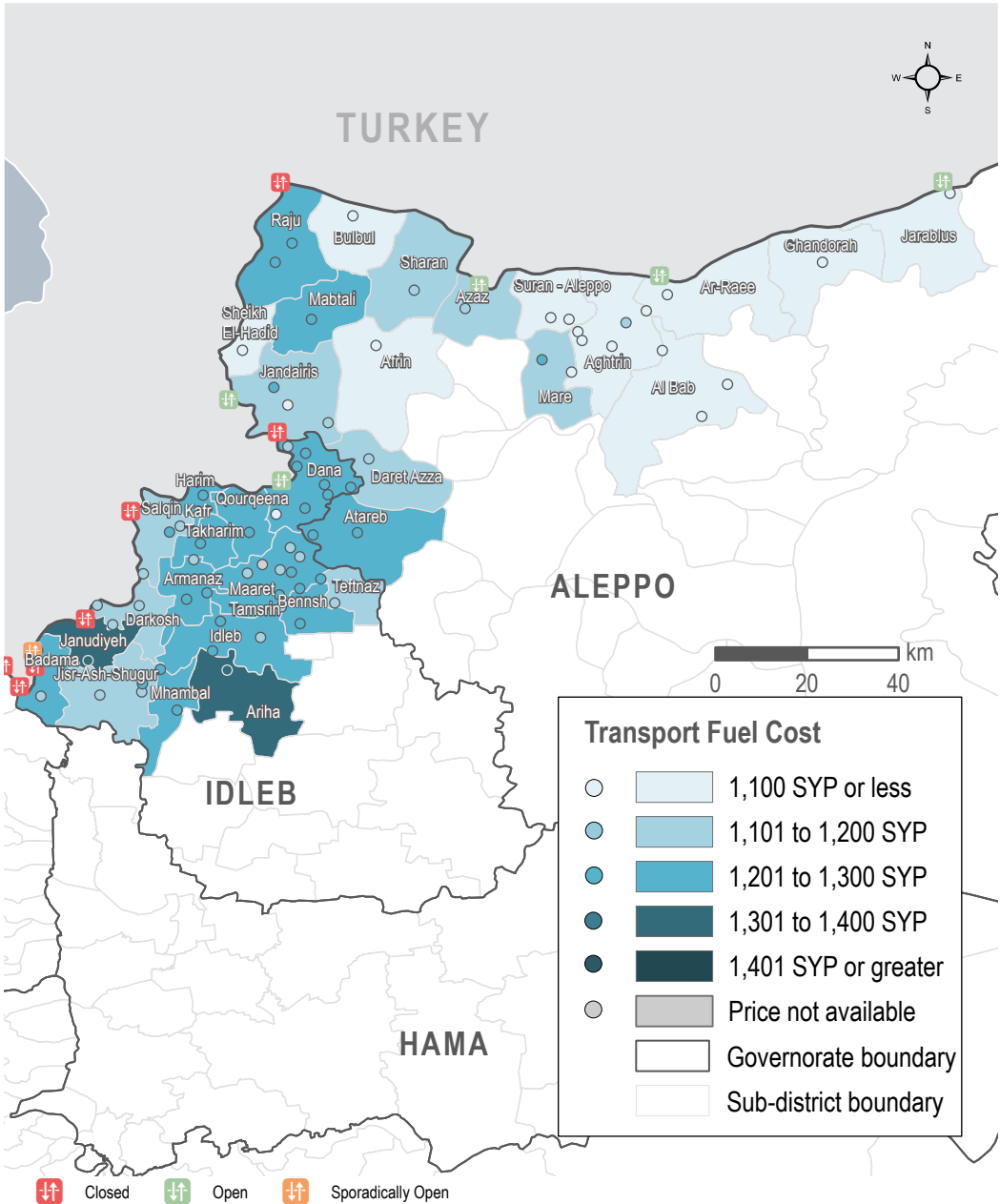
MEDIAN TRANSPORT FUEL COSTS, BY MONTH & TYPE

Syrian Pounds



TRANSPORT FUEL COST

Sub-districts & Communities, Syrian Pounds



NORTHWEST SYRIA - SMEB HYGIENE ITEMS

Idlib, Western & Northern Aleppo governorates

MEDIAN SMEB HYGIENE ITEMS' PRICE

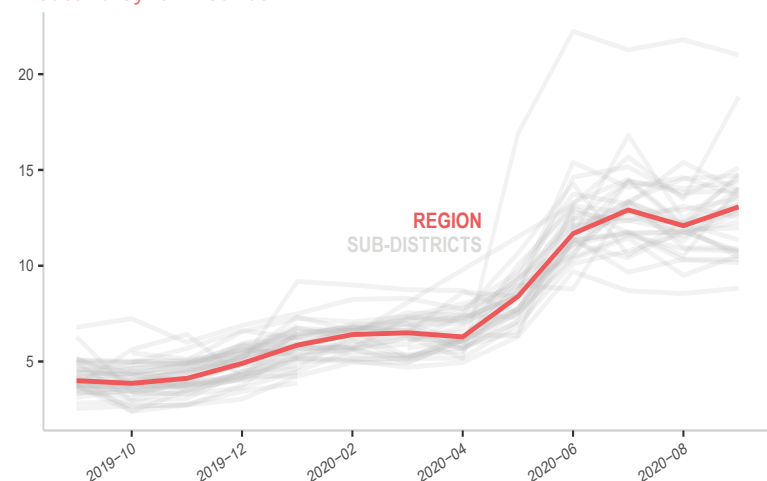
12 bars of soap, 4 packs of 10 sanitary pads, 3kg of laundry/dish soap, 200g of toothpaste, Syrian Pounds

Sub-district	SMEB Hygiene Items	One month change	Six month change	Sub-district	SMEB Hygiene Items	One month change	Six month change
Northwest Syria	13,071	8%	101%	Idlib	12,950	11%	106%
Afrin	14,100	34%	168%	Jandairis	10,900	0%	76%
Aghtrín	8,825	3%	88%	Janudiyeh	NA	NA	NA
Al Bab	12,525	-4%	89%	Jarablus	10,165	-1%	105%
Ariha	13,666	-6%	155%	Jisr-Ash-Shugur	14,700	1%	110%
Armanaz	10,675	-10%	68%	Kafr Takharim	13,922	14%	90%
Ar-Ra'ee	11,978	1%	131%	Maaret Tamsrin	13,200	9%	90%
Atareb	21,001	-4%	NA	Ma'b'tali	10,326	0%	59%
A'zaz	13,191	7%	92%	Mare'	11,350	-7%	99%
Badama	14,367	2%	95%	Mhambal	10,772	-9%	63%
Bennsh	15,114	11%	107%	Qourqeena	14,600	17%	147%
Bulbul	13,929	1%	93%	Raju	12,275	4%	101%
Dana	14,801	23%	107%	Salqin	10,763	-1%	104%
Daret Azza	13,950	-9%	68%	Sharan	13,500	4%	161%
Darkosh	12,750	11%	93%	Sheikh El-Hadid	10,538*	11%	20%
Ghandorah	12,815	5%	161%	Suran	10,425	-13%	64%
Harim	13,725	22%	82%	Teftnaz	18,818	39%	NA

* For these sub-districts, all hygiene items median prices rely on less than 3 observations.

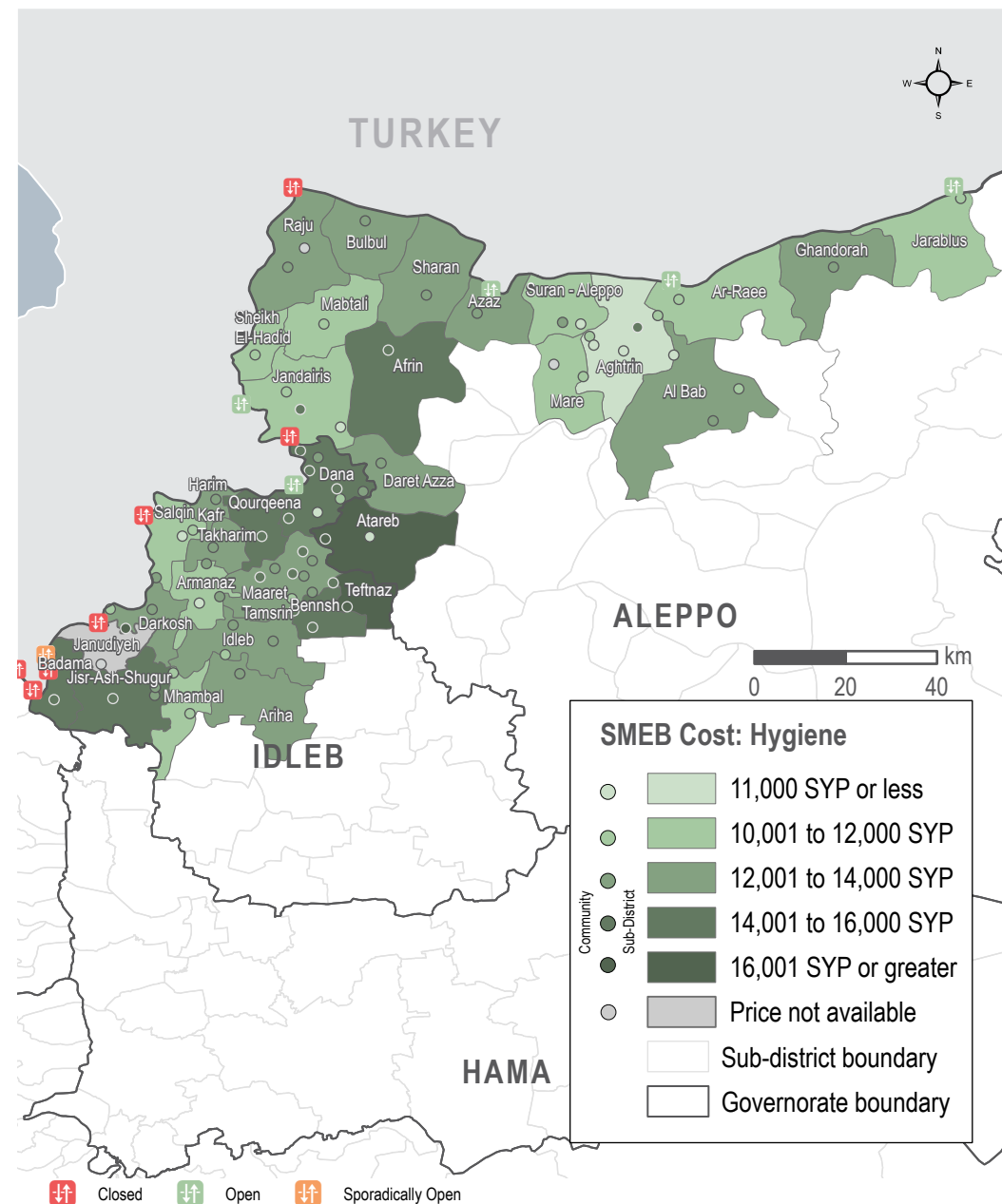
MEDIAN SMEB HYGIENE ITEMS' COSTS, BY MONTH

Thousand Syrian Pounds



SMEB HYGIENE ITEMS' COST

Sub-districts & Communities, Syrian Pounds



MEDIAN WINTERISATION ITEMS' PRICE

Per 1 piece, Syrian Pounds

Sub-district	Jerrycan	Plastic sheet	Winter carpet	Kerosene/ diesel heater	Winter blanket	Mattress	Men's winter jacket	Women's winter jacket	Children's winter jacket
Northwest Syria	2,800	9,000	60,000	30,000	3,500	8,500	15,200	18,050	8,650
Afrin	3,250	14,500	40,000	40,000	16,500	6,000	NA**	NA	NA
Aghtrin	1,350	7,500	100,000*	30,000*	6,000	8,000	NA	NA	NA
Al Bab	1,500	8,000	100,000	40,000*	10,000	12,000	NA	NA	NA
Ariha	NA	NA	NA	NA	NA	NA	NA	NA	NA
Armanaz	3,400	8,900	65,500	27,000	3,550	8,300	NA	NA	NA
Ar-Ra'ee	2,300	8,000	57,000	30,000	22,000	7,000	NA	NA	NA
Atareb	2,500*	11,000*	12,000*	12,000*	3,000*	6,000*	NA	NA	NA
A'zaz	2,950	9,500	85,000	NA	7,000	11,250	NA	NA	NA
Badama	3,300	9,000	65,000	32,000	3,500	8,700	NA	NA	NA
Bennsh	1,700	10,000	10,500	26,150	3,050	7,750	15,200	18,200	8,500
Bulbul	3,100*	8,700*	66,000*	26,000*	3,200*	8,500*	NA	NA	NA
Dana	2,800	9,500	73,000	27,500	3,500	9,000	NA	NA	NA
Daret Azza	2,000	8,250	85,000	NA	NA	12,250	NA	NA	NA
Darkosh	3,200	9,000	55,000	30,000*	5,740	8,100	NA	NA	NA
Ghandorah	2,750*	7,750*	60,000*	32,000*	3,750*	6,500*	NA	NA	NA
Harim	2,700	11,000	70,000	73,000	2,500	8,500	NA	NA	NA
Idleb	3,000	7,500	40,000	24,250	8,500	8,500	NA	NA	NA
Jandairis	2,800	8,750	60,500	25,000	3,000	7,500	NA	NA	NA
Janudiyeh	2,500*	10,000*	60,000*	35,000*	3,000*	7,000*	NA	NA	NA
Jarablus	2,800	9,500	74,000	46,800	25,000	9,500	NA	NA	NA
Jisr-Ash-Shugur	3,500	10,000	33,000	30,000	8,000	8,500	NA	NA	NA
Kafr Takharim	2,000	6,000	16,500	21,500	3,000	15,000	NA	NA	NA
Maaret Tamsrin	3,000	10,000	65,000	26,500	3,250	8,000	NA	NA	NA
Ma'btali	NA	NA	NA	NA	NA	NA	NA	NA	NA
Mare'	3,000	9,000*	NA	30,000*	3,000	8,500	NA	NA	NA
Mhambal	3,000*	NA	NA	NA	NA	10,000*	NA	NA	NA
Qourqeena	2,000	11,800	58,000	25,000	2,000	7,500	NA	NA	NA
Raju	2,400	7,500	37,000	33,500	8,000	8,000	NA	NA	NA
Salqin	3,000	8,750	40,000	27,000	2,900	8,000	NA	NA	NA
Sharan	3,000	11,000	55,000	25,000	2,500	7,000	NA	NA	NA
Sheikh El-Hadid	3,500	12,600	60,000*	35,000	9,500	8,500	NA	NA	NA
Suran	2,700	8,500	100,000	28,000	7,000	9,000	NA	NA	NA
Teftnaz	2,200	10,800	20,900	32,000	2,600	8,800	15,200	17,900	8,800

* For these sub-districts, the median price are relying on less than 3 observations.

** NA means data not available.

MEDIAN WINTERISATION ITEMS' PRICE

Per 1 piece/pair, Syrian Pounds

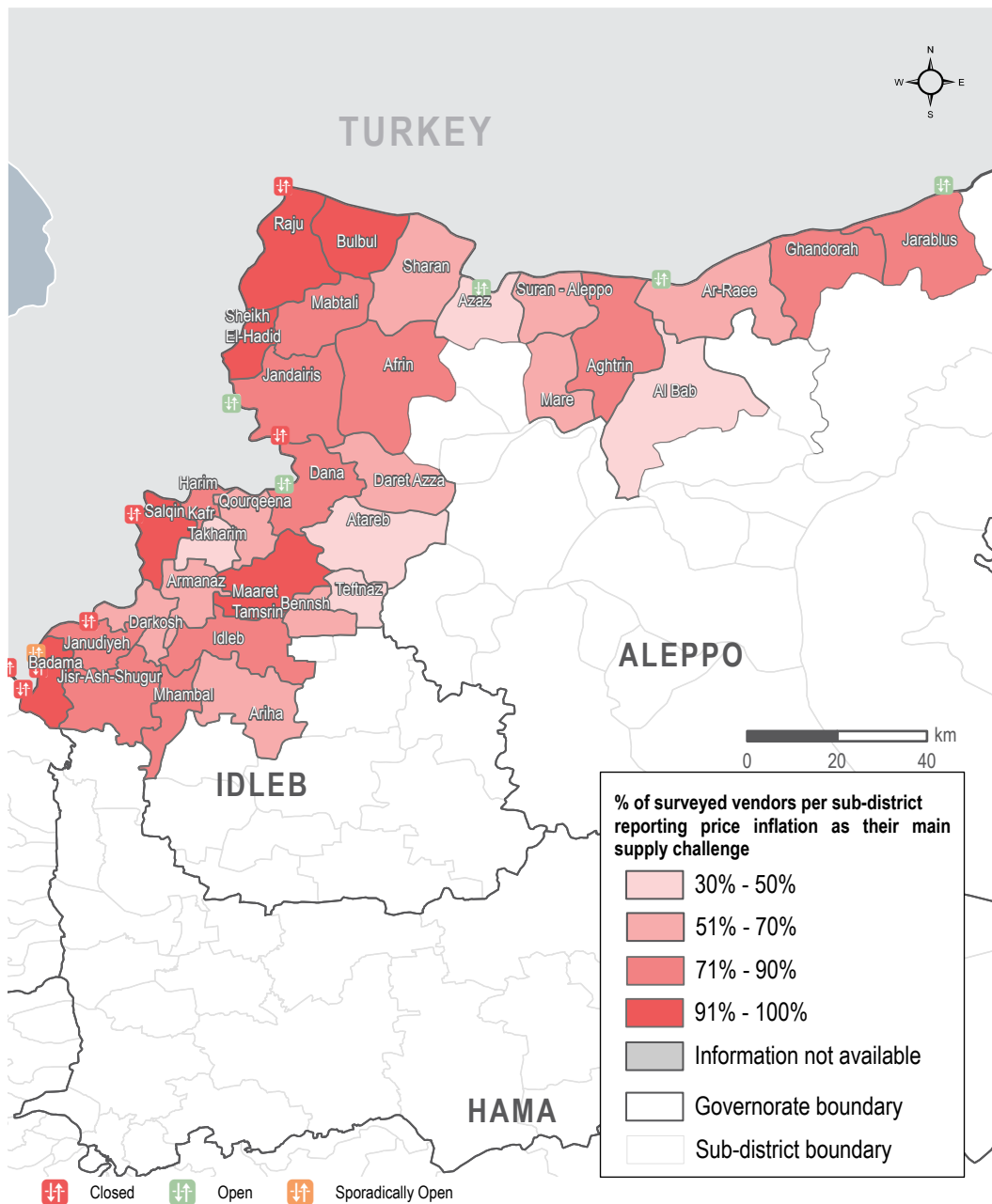
Sub-district	Men's winter boots	Women's winter boots	Children's winter boots	Adult's hat	Children's hat	Solid fuel stove	Fire extinguisher	Fire blanket
Northwest Syria	8,000	6,000	4,900	1,800	1,600	62,500	35,000	12,250
Afrin	NA**	NA	NA	NA	NA	30,000*	NA	NA
Aghtrin	NA	NA	NA	NA	NA	80,000*	NA	NA
Al Bab	NA	NA	NA	NA	NA	NA	NA	NA
Ariha	NA	NA	NA	NA	NA	NA	NA	NA
Armanaz	NA	NA	NA	NA	NA	68,000	NA	NA
Ar-Ra'ee	NA	NA	NA	NA	NA	22,000	NA	NA
Atareb	4,000*	3,500*	3,000*	NA	NA	20,000*	NA	NA
A'zaz	8,000	6,000	4,900	NA	NA	42,600*	NA	NA
Badama	NA	NA	NA	NA	NA	68,500	NA	NA
Bennsh	8,100	8,100	7,800	1,700	1,600	24,000	NA	NA
Bulbul	NA	NA	NA	NA	NA	70,000*	NA	NA
Dana	NA	NA	NA	NA	NA	65,000	NA	NA
Daret Azza	NA	NA	NA	NA	NA	NA	NA	NA
Darkosh	NA	NA	NA	NA	NA	25,000*	NA	NA
Ghandorah	NA	NA	NA	NA	NA	25,000*	NA	NA
Harim	NA	NA	NA	NA	NA	85,000	NA	NA
Idleb	NA	NA	NA	NA	NA	30,000	41,000*	12,250*
Jandairis	NA	NA	NA	NA	NA	70,000	NA	NA
Janudiyeh	NA	NA	NA	NA	NA	60,000*	NA	NA
Jarablus	NA	NA	NA	NA	NA	35,000	NA	NA
Jisr-Ash-Shugur	NA	NA	NA	NA	NA	28,000	NA	NA
Kafr Takharim	NA	NA	NA	NA	NA	75,000	NA	NA
Maaret Tamsrin	3,800*	4,200*	3,300*	NA	NA	70,000	35,000	NA
Ma'btali	NA	NA	NA	NA	NA	NA	NA	NA
Mare'	NA	NA	NA	NA	NA	NA	NA	NA
Mhambal	NA	NA	NA	NA	NA	NA	NA	NA
Qourqeena	NA	NA	NA	NA	NA	75,000	NA	NA
Raju	NA	NA	NA	NA	NA	30,000	NA	NA
Salqin	NA	NA	NA	NA	NA	72,500	NA	NA
Sharan	NA	NA	NA	NA	NA	70,000	NA	NA
Sheikh El-Hadid	NA	NA	NA	NA	NA	35,000	NA	NA
Suran	NA	NA	NA	NA	NA	75,000	33,000*	NA
Teftnaz	8,500	8,100	7,100	1,900	1,600	NA	NA	NA

* For these sub-districts, the median price are relying on less than 3 observations.

** NA means data not available.

SUPPLY CHALLENGES - PRICE INFLATION

Sub-districts



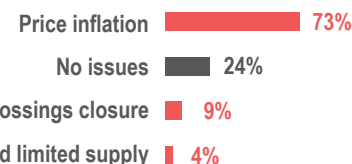
MARKET FUNCTIONALITY

During data collection, only 1 out of the 2,620 surveyed vendor across Aleppo and Idleb governorates reported having closed their shops.

SUPPLY CHALLENGES

While supply challenges reported by surveyed vendors were similar to last month's, the percentage of surveyed vendors reporting challenges decreased since August. Out of 2,455 surveyed vendors, 76% reported facing one or more supply challenges in September (it was recorded at 83% in the previous month). Price inflation was again the most commonly reported supply challenge, reported by 73% of total respondents. This suggests that price inflation was a critical issue for surveyed vendors that may negatively impact availability of items. This challenge was followed by 9% of total respondents who reported the closure of border crossings impacting supply and 4% reporting their suppliers failed to meet demand (see figure 1).

Figure 1: Top 4 most commonly reported supply challenges by surveyed vendor (1,290 respondents)*



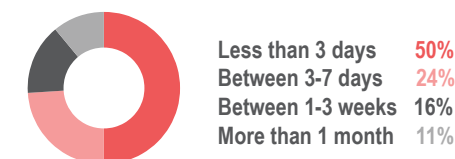
*Multiple answers allowed, thus findings may exceed 100%

RESTOCKING

In addition to reported supply challenges, 1% of 2,619 surveyed vendors reported that they would be unable to restock if they were to run out of supplies. Inability to restock was most commonly reported by surveyed bakery and house good vendors (around 2% each). Challenges also existed with the amount of backstock surveyed vendors could draw upon. Surveyed vendors were asked after how many days they would hypothetically run out of stock if supply was to be cut;

50% of respondents reported that they would run out of stock in less than 3 days and 24% would run out in 3 to 7 days (see figure 2). Among surveyed vendors, water trucking, clothes and vegetables vendors as well as butchers were the one reporting most frequently that they would run out in less than 3 days if their supply lines were cut, with percentages ranging from 75% and 83% for surveyed vendors depending on the shop type.

Figure 2: Reported number of days before all types of vendors would hypothetically run out of stock, if supply lines were to be cut (2,619 respondents)



AVAILABILITY OF USD BANKNOTES

Of the 210 surveyed informal exchange vendors who were asked if they had limited stock of any USD banknote denominations, 90% of surveyed vendors in Aleppo governorate and 99% of surveyed vendors in Idleb governorate reported having limited stock of one or more denomination whilst the rest reported having enough stock of USD. Surveyed vendors in Aleppo most commonly reported having limited stock of 50 USD banknotes (56% of surveyed vendors) as well as 100 USD banknotes (reported by 55% of surveyed vendors). In Idleb, 20 USD banknotes were most commonly reported to be limited in stock (77% of surveyed vendors).



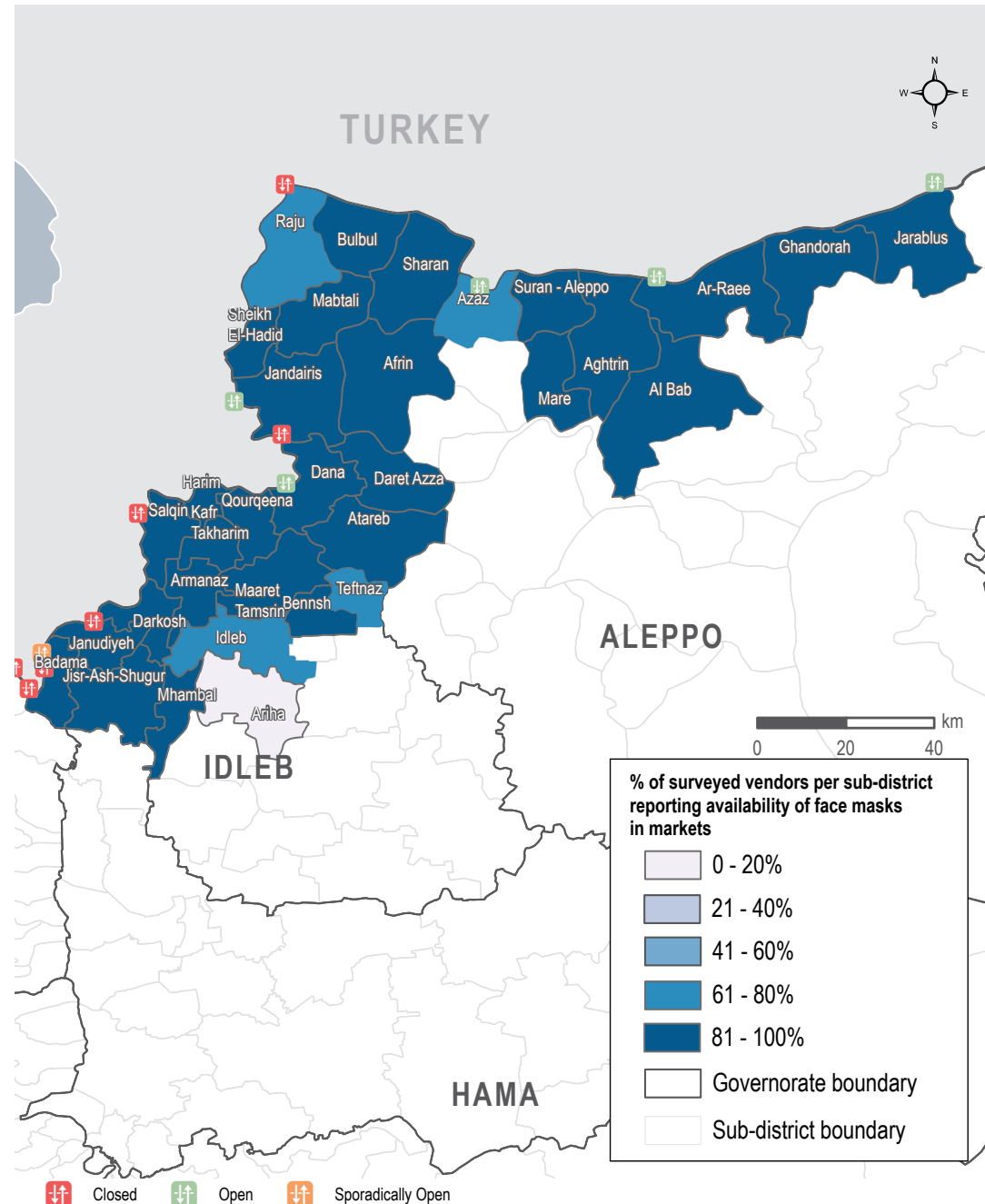
MEDIAN PRICE OF COVID-19 ITEMS Syrian Pounds

Sub-district	Face mask (1 piece)	Plastic gloves (box of 100)	Sterile alcohol (1 litre)	Hand sanitiser (500 ml)	Bottled bleach (1 litre)	Trash bags (roll of 30)
Northwest Syria	425	10,000	6,600	3,100	1,200	3,000
Afrin	500	16,250	7,900	2,000	925	2,500
Aghtrn	350	8,500	6,000	3,000	1,250	1,750
Al Bab	400	15,000	7,500	3,000	1,500	1,900
Ariha	NA	375 *	NA	NA	1,275	NA
Armanaz	400	9,000	5,600	4,250	1,300	3,200
Ar-Ra'ee	700	20,000	6,500	2,500	1,500	1,500
Atareb	300	12,700	10,625	4,000	1,200	2,150
A'zaz	575	625	10,000	2,800	1,550	2,500
Badama	450	9,150	6,000	3,450	1,300	3,325
Bennsh	500	17,000	17,750	6,500	1,200	4,500
Bulbul	425	9,300	5,700	3,100	1,200	3,250
Dana	475	11,250	7,500	4,000	1,250	3,000
Daret Azza	500	12,900	9,500	3,100	1,200	1,700
Darkosh	450	14,000	10,440	4,350	1,100	2,900
Ghandorah	400	15,500	4,200	2,200	1,200	1,080
Harim	425	10,000	7,000	3,200	1,200	3,200
Idleb	400	10,400	6,900	5,200	1,200	3,500
Jandairis	400	9,000	6,000	3,500	1,200	3,100
Janudiyeh	500	9,000	6,000	3,000	1,300	3,000*
Jarablus	400	15,000*	4,200	2,000	1,100	1,140
Jisr-Ash-Shugur	400	8,500	6,000	3,000	1,100	3,200
Kafr Takharim	350	8,700	8,700	3,500	1,100	2,200
Maaret Tamsrin	400	9,100	6,000	3,500	1,300	3,300
Ma'btali	500*	15,000	NA	1,500*	1,100	NA
Mare'	550	5,250	6,750	3,000	1,500	2,000
Mhambal	500	30,000	17,500	NA	1,100	NA
Qourqeena	400	9,000	6,000	3,300	1,200	3,350
Raju	375	6,250	6,600	3,325	1,275	3,275
Salqin	400	8,500	10,000	4,000	1,200	2,900
Sharan	450	8,000	6,000	3,100	1,200	3,250
Sheikh El-Hadid	500	25,000	13,000	5,000	800	3,000
Suran	400	10,000	6,500	3,100	1,200	2,000
Teftnaz	500	13,000	6,150	950	1,000	5,000

* For these sub-districts, the median price are relying on less than 3 observations.

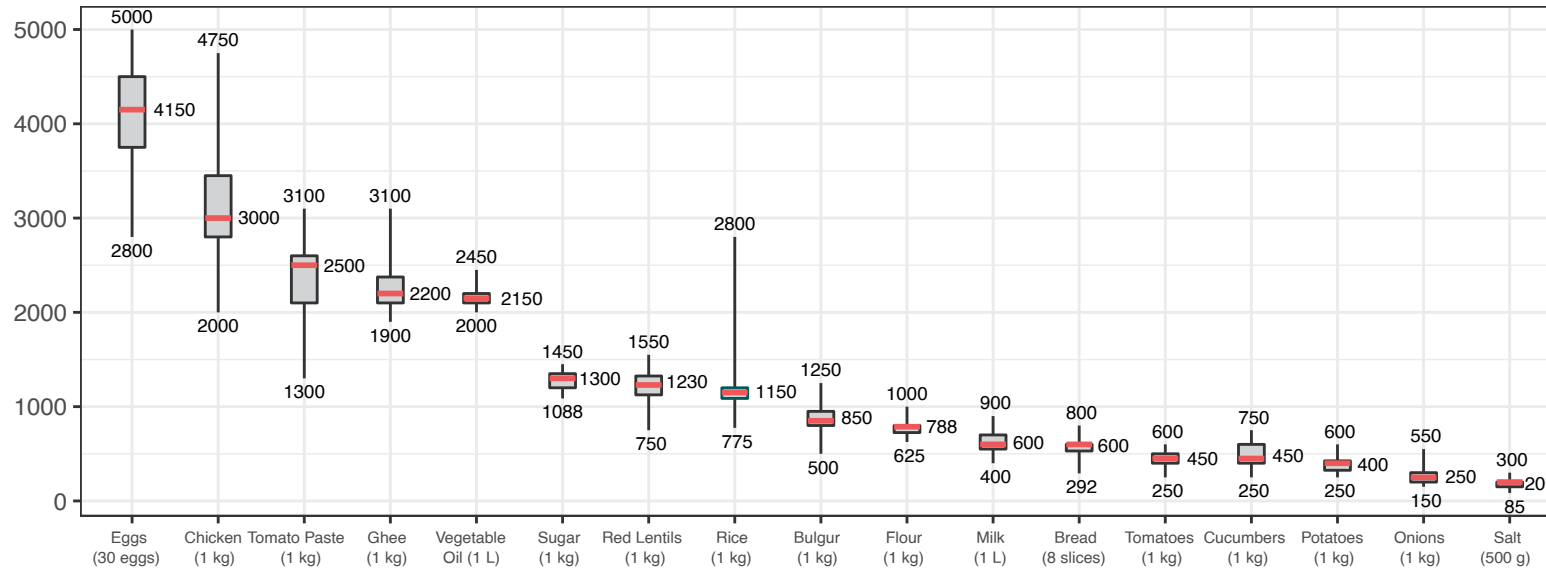


AVAILABILITY OF FACE MASKS Sub-districts



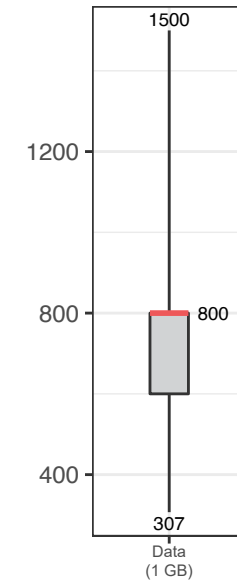
ASSESSED FOOD ITEMS

Syrian Pounds



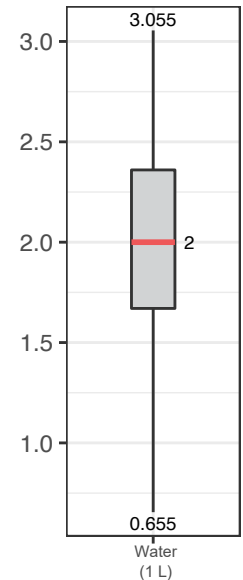
CELLPHONE DATA

Syrian Pounds



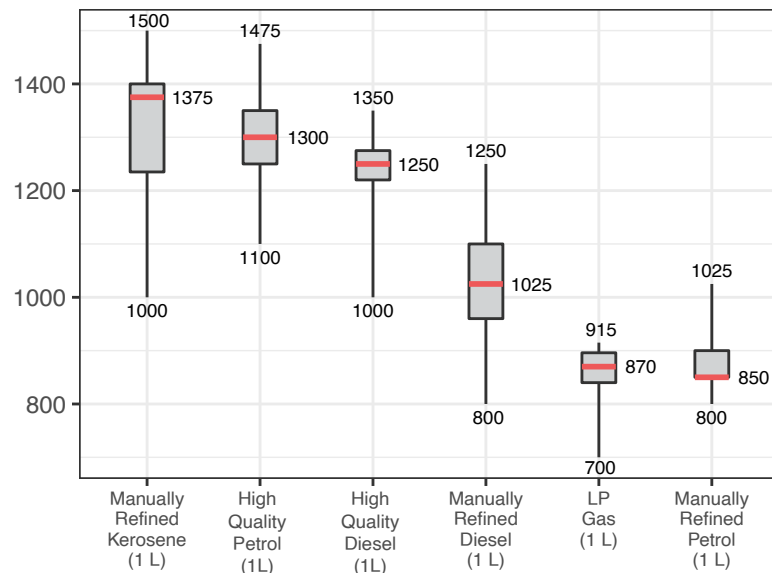
WATER TRUCKING

Syrian Pounds



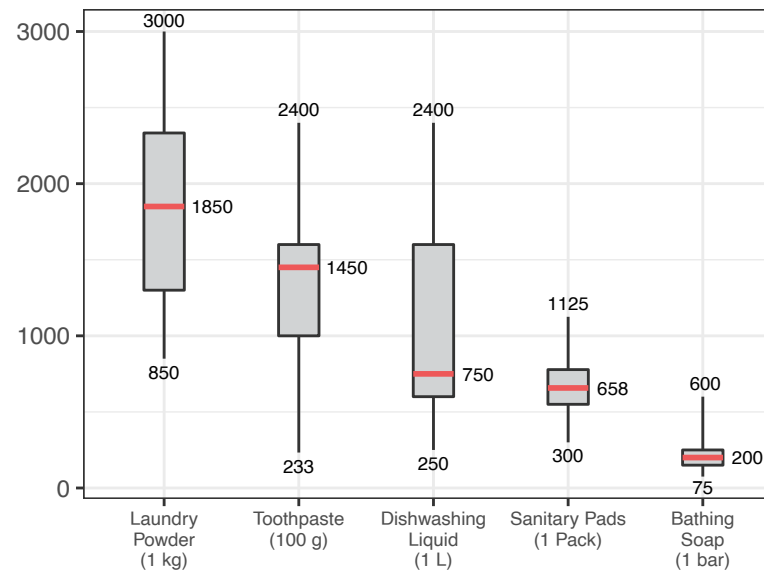
ASSESSED FUEL ITEMS

Syrian Pounds

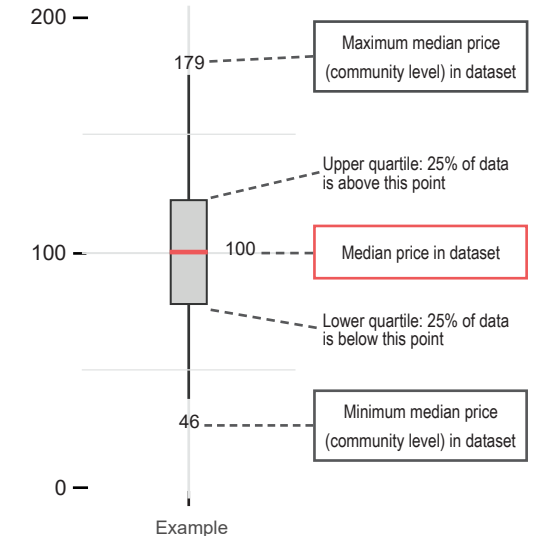


ASSESSED HYGIENE ITEMS

Syrian Pounds



READING BOXPLOTS



METHODOLOGY

In order to be included in the Syria Market Monitoring Exercise, markets must be permanent in nature, large enough to support at least two wholesalers, and diverse enough to provide a sufficient variety of goods and commodities. Additionally, the shops surveyed within each market must be housed in permanent structures and must sell certain items to be eligible for inclusion. Participating organisations train their enumerators on the Market Monitoring methodology and data collection tools using standard training materials developed by REACH. Each enumerator aims to assess three to five shops of each type in the main market in their assigned community/ neighbourhood, using surveys to collect information about the cheapest prices of each item and whether there are any barriers in the supply chain. In sub-districts where direct surveying by enumerators is not possible, data collection is conducted remotely through key informants such as shop owners, suppliers and consumers. A survey form is deployed on KoBo each month to capture price and stock information from different types of establishments, including grocery stores, fuel traders, currency exchange shops, water trucking services and mobile phone shops, among others. Nearly all participating partners submit their data to these KoBo forms, using the KoBoCollect Android app to upload data. A small number of partners, by prior permission, collect data using fully harmonised data collection tools deployed on other platforms, then submit their raw data to REACH for standardisation, compilation and cleaning.

Following data collection, REACH compiles and cleans all partners' data, normalising prices and cross-checking outliers. The cleaned data is then analysed by SMEB costs, components of the SMEB, and by commodities. These trends are observed at the sub-district-level and, when possible, at the community-level. Prices are divided into quartiles and boxplots are created

to assist CWG members in understanding the distribution of prices across the northeast and northwest of Syria. To illustrate local variations in prices and availability, REACH uses the collected data to map the price of the SMEB in each sub-district and adds illustrations of surrounding border crossings, with data sourced from the United Nations Office for the Coordination of Humanitarian Affairs (OCHA). In addition, each SMEB component costs and transport fuel prices are graphed to visualise trends over time.

The cleaned datasets are available on the [Humanitarian Data Exchange](#) website and the [REACH Resource Centre](#) and are distributed to all participating partners, as well as to interested clusters and the broader humanitarian community.

Calculating 'median cheapest price'

The regional figures are calculated by taking the median of the minimum-reported prices of a region's sub-districts. In turn, the sub-district medians are calculated using the Market Monitoring base-data.

Calculating Survival Minimum Expenditure Basket (SMEB) costs

The cost of a SMEB is calculated for each assessed sub-district by calculating the median cheapest price of each SMEB commodity in that sub-district, then multiplying these medians by the number of units that an average Syrian household requires to purchase in a month. The composition of the SMEB can be found on [page 1](#). SMEB vegetables includes potatoes, tomatoes, onions, and cucumbers.

Calculating price trends over time

One month and six-month price changes and trends in this factsheet are calculated only with the comparable assessed communities of a sub-district with consistent coverage across months. On the other hand, in the dataset, medians are calculated taking all

assessed communities for the current month in consideration. Therefore, prices and percentage changes within the tables of this factsheet may slightly differ from the current month's dataset medians. In the narrative, both regional median SMEB values are shared; the SMEB value including all assessed communities that specific month, and the SMEB value only taking in consideration communities with consistent coverage since the previous month.

Changes to coverage

Given security and access constraints in the south of Syria, data collection has been unable to take place since July 2018. Escalation of conflict in October 2019 has resulted in limited coverage in northeast Syria since then.

Challenges and limitations

As the Syria Market Monitoring Exercise currently includes 26 partners based in 2 hubs, achieving a consistent approach is inherently challenging. Participating organisations are therefore requested to adopt harmonised data collection methodologies and tools to ensure that the data uploaded is as accurate as possible. Because this exercise collects data directly from vendors and relies on partner organisations for its wide coverage, Market Monitoring may sporadically lose coverage temporarily or for longer periods of time due to challenges in accessing locations or loss in the shared data collection capacity of the project. This impacts the ability to report on trends, as can be seen in the line graphs and 'NA' values in the tables.

ABOUT REACH

REACH Initiative facilitates the development of information tools and products that enhance the capacity of aid actors to make evidence-based decisions in emergency, recovery and development contexts. The methodologies used by REACH include primary data collection and in-depth analysis, and all activities are conducted through inter-agency aid coordination mechanisms. REACH is a joint initiative of IMPACT Initiatives, ACTED and the United Nations Institute for Training and Research - Operational Satellite Applications Programme (UNITAR-UNOSAT). For more information please visit our website:

www.reach-initiative.org. You can contact us directly at: geneva@reach-initiative.org and follow us on Twitter [@REACH_info](https://twitter.com/REACH_info).

ABOUT THE CASH WORKING GROUP

The Cash Working Group (CWG) was established in May 2014 to analyse the impact of the ongoing conflict on markets in Syria and guide the implementation of humanitarian cash and voucher programmes within those markets. REACH and the CWG have been partners on the Syria Market Monitoring Exercise since early 2015.

About REACH's COVID-19 response

As an initiative deployed in many vulnerable and crisis-affected countries, REACH is deeply concerned by the devastating impact the COVID-19 pandemic may have on the millions of affected people we seek to serve. REACH is currently working with Cash Working Groups and partners to scale up its programming in response to this pandemic, with the goal of identifying practical ways to inform humanitarian responses in the countries where we operate. COVID-19-relevant market monitoring and market assessments are a key area where REACH aims to leverage its existing expertise to help humanitarian actors understand the impact of changing restrictions on markets and trade. Updates regarding REACH's response to COVID-19 can be found in a [devoted thread](#) on the REACH website. Contact geneva@impact-initiatives.org for further information.