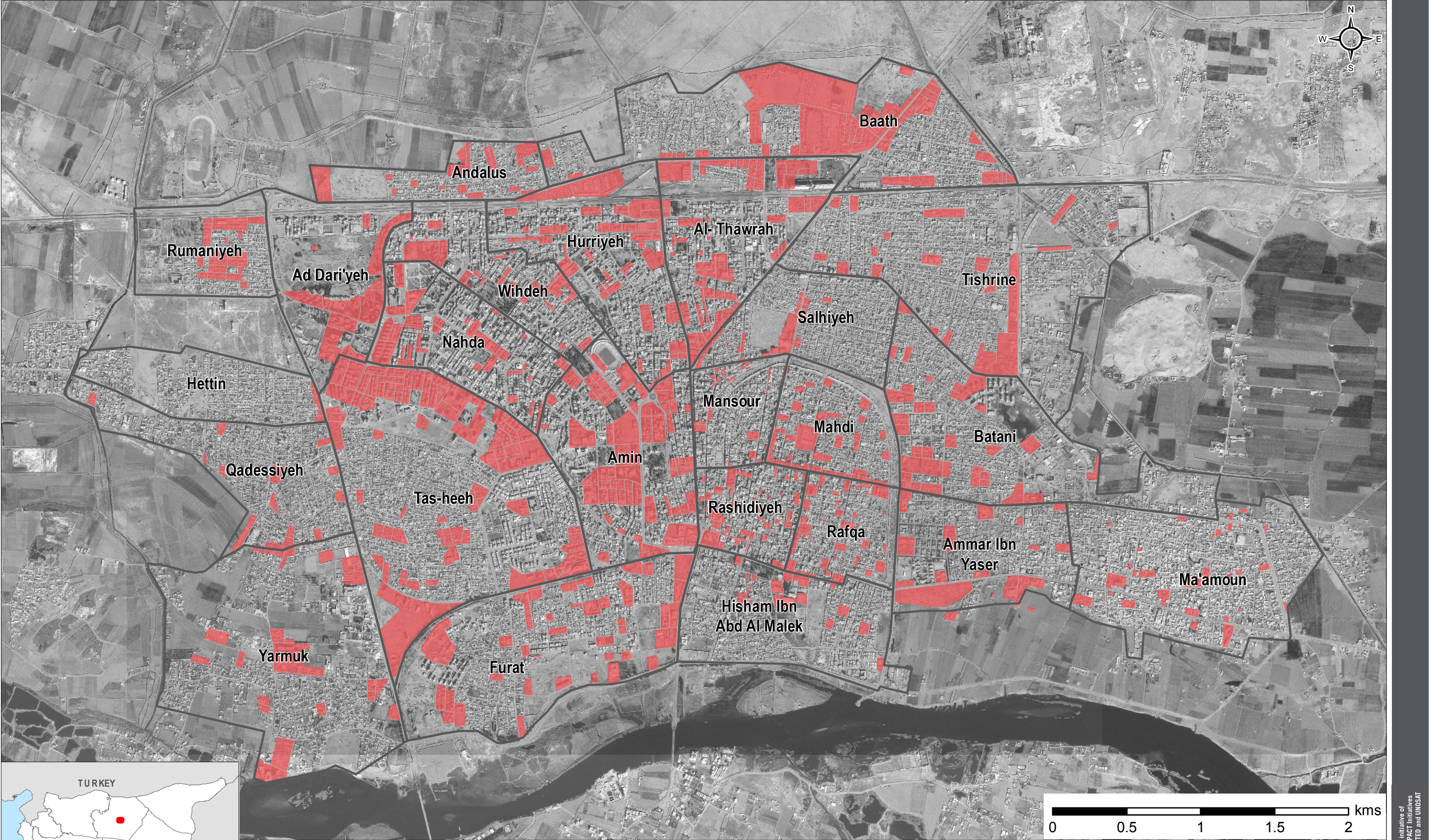


Syria - City of Raqqa

Damaged Areas – Participatory Mapping Exercise – 14-15 August 2017

For Humanitarian Purposes Only
Production Date: 17 August 2017



- Destroyed or heavily damaged areas
- Main road
- Secondary road
- Neighbourhood boundary

Methodology
In order to determine damaged and areas, participatory mapping exercises were conducted with Key Informants (KIs) who were recently displaced from each neighbourhood of Raqqa city. KIs were asked to indicate blocks of housing where at least 30% of structures were damaged or destroyed. Data collection took place between August 14th-15th 2017.

Image copyright: DigitalGlobe, Imagery provided by: U.S. Department of State, Humanitarian Information Unit, NextView License - WV02 - Resolution 0.50 cm - Date: 03.02.2017
Projection: WGS 1984 UTM Zone 37N
File: reach_syria_raqqa_participatory_11072017_a3_en
Contact: reach.mapping@impact-initiatives.org
Note: Data, designations and boundaries contained in this map are not warranted to be error-free and do not imply acceptance by the REACH partners, donors and associated persons mentioned in this map.