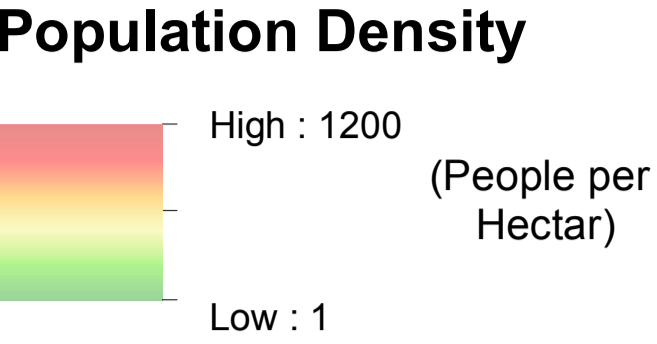




# IRAQ - Erbil Governorate - Basirma Camp

## Population Density - June 2015

For Humanitarian Purposes Only  
Production date : 9 August 2015



**Camp Infrastructure**

- Fence
- Unoccupied Area
- Office / Facility
- Entrance
- Camp Management
- NGO Office
- Community Area
- WASH Centre
- Bakery
- Fuel Tank

**GPS Coordinates of camp location:**  
Longitude: 44°20' 26" E  
(44.340556)  
Latitude: 36°29' 46" N  
(36.496111)

Data Source:  
Thematic Data: 17/06/2015 - REACH  
Administrative boundaries: GADM  
Background imagery:  
18/06/2014 DigitalGlobe  
Projection: WGS 1984 UTM Zone 38N  
  
Contact : [iraq@reach-initiative.org](mailto:iraq@reach-initiative.org)  
File:  
IRQ\_Map\_Basirma\_IRQ\_Map\_Basirma\_CampSweepIndicators\_17Jun2015

Note: Data, designations and boundaries contained on this map are not warranted to be error-free and do not imply acceptance by the REACH partners, associates or donors mentioned on this map.





# IRAQ - Erbil Governorate - Basirma Camp

## Monthly Income - June 2015

For Humanitarian Purposes Only  
Production date : 9 August 2015

### Monthly Income in USD

- 0 \$ - 300 \$
- 301 \$ - 600 \$
- 601 \$ - 900 \$
- 901 \$ - 1500 \$
- 1501 \$ - 2800 \$

### Camp Infrastructure

- Fence
- Unoccupied Area
- Office / Facility
- Entrance
- Camp Management
- NGO Office
- Community Area
- WASH Centre
- Bakery
- Fuel Tank

#### GPS Coordinates of camp location:

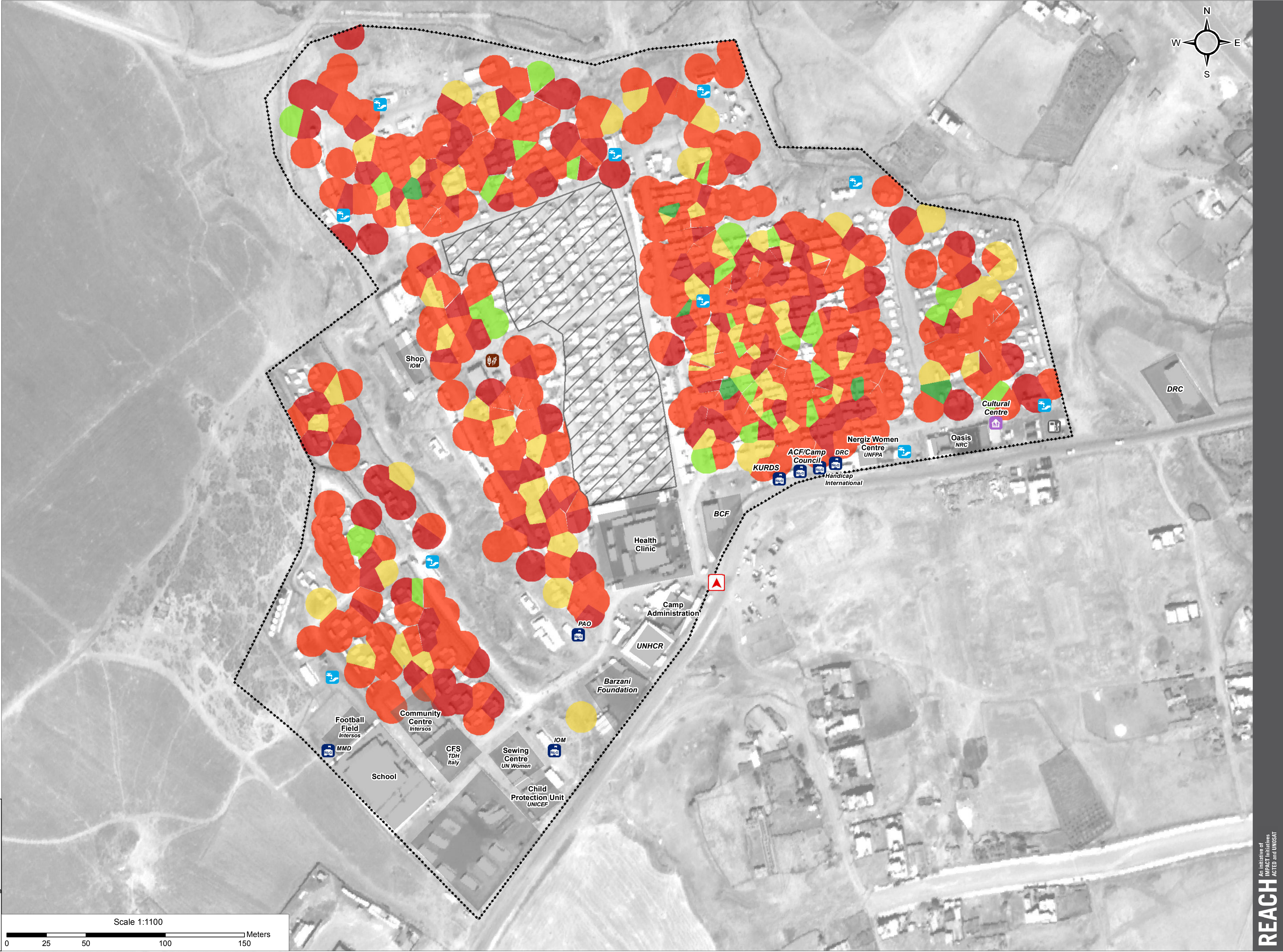
Longitude: 44°20' 26" E  
(44.340556)  
Latitude: 36°29' 46" N  
(36.496111)

**Note:**  
Polygons representing households are generated by the ArcToolbox tool 'Create Thiessen Polygons' using the location recorded at each assessment.  
The polygons created are a spatial representation of the household area not a defined boundary of a household.

**Data Sources:**  
Thematic Data: 17/06/2015 - REACH  
Administrative boundaries: GADM  
Background imagery: 18/06/2014 DigitalGlobe  
Projection: WGS 1984 UTM Zone 38N

Contact : [iraq@reach-initiative.org](mailto:iraq@reach-initiative.org)  
File: IRQ\_Map\_Basirma\_IRQ\_Map\_Basirma\_CampSweepIndicators\_17Jun2015

**Note:** Data, designations and boundaries contained on this map are not warranted to be error-free and do not imply acceptance by the REACH partners, associates or donors mentioned on this map.





# IRAQ - Erbil Governorate - Basirma Camp

## Shelter Types - June 2015

For Humanitarian Purposes Only  
Production date : 9 August 2015

### Shelter Type

- Offices and Facilities
- Permanent Shelter
- Tent With Block
- Tent Without Block

### Camp Infrastructure

- Fence
- Unoccupied Area
- Office / Facility
- Entrance
- Camp Management
- NGO Office
- Community Area
- WASH Centre
- Bakery
- Fuel Tank

#### GPS Coordinates of camp location:

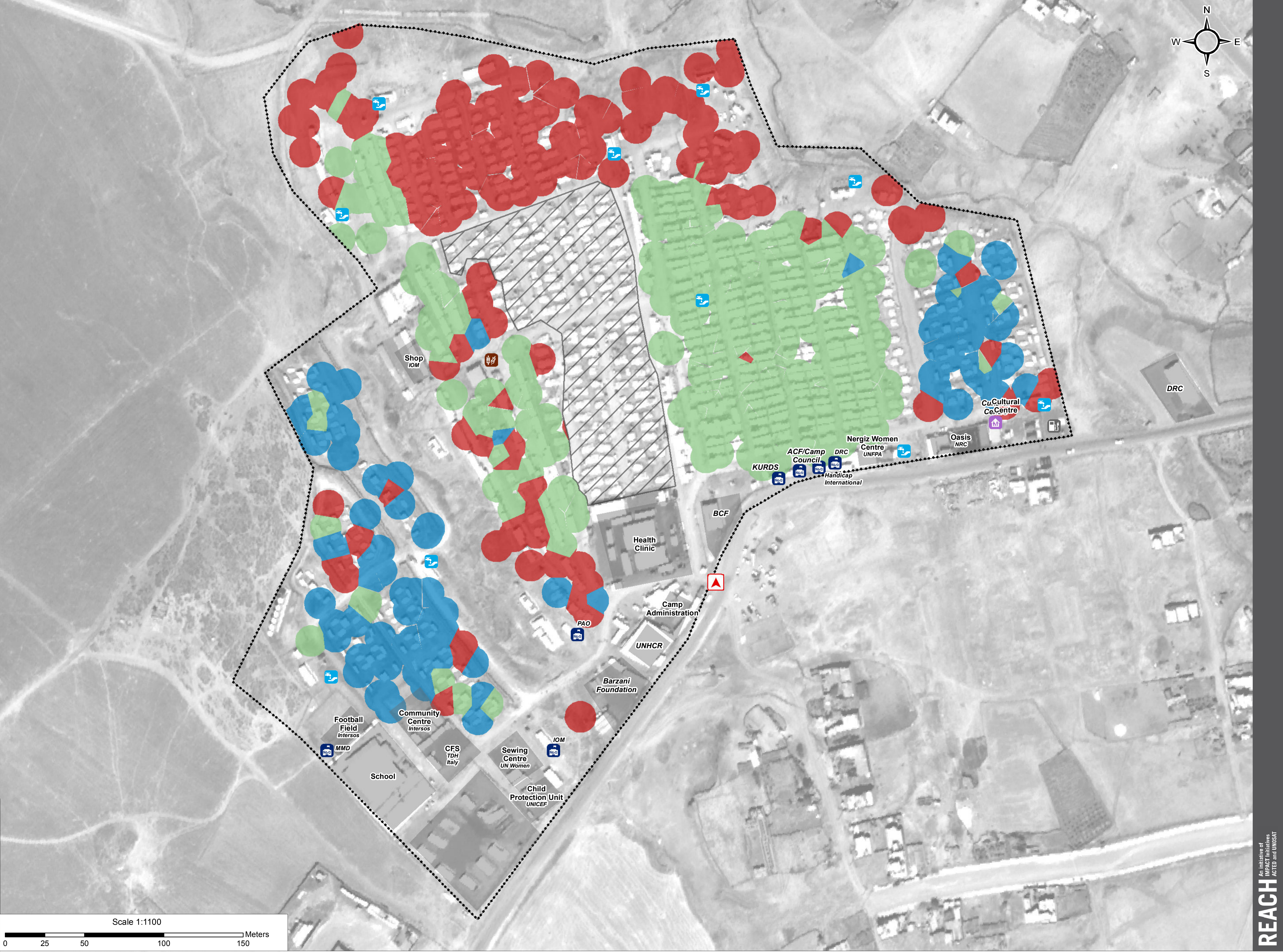
Longitude: 44°20' 26" E  
(44.340556)  
Latitude: 36°29' 46" N  
(36.496111)

**Note:**  
Polygons representing households are generated by the ArcToolbox tool 'Create Thiessen Polygons' using the location recorded at each assessment.  
The polygons created are a spatial representation of the household area not a defined boundary of a household.

**Data Sources:**  
Thematic Data: 17/06/2015 - REACH  
Administrative boundaries: GADM  
Background imagery: 18/06/2014 DigitalGlobe  
Projection: WGS 1984 UTM Zone 38N

Contact : [iraq@reach-initiative.org](mailto:iraq@reach-initiative.org)  
File: IRQ\_Map\_Basirma\_IRQ\_Map\_Basirma\_CampSweepIndicators\_17Jun2015

**Note:** Data, designations and boundaries contained on this map are not warranted to be error-free and do not imply acceptance by the REACH partners, associates or donors mentioned on this map.





# IRAQ - Erbil Governorate - Basirma Camp

## Primary Livelihood - June 2015

For Humanitarian Purposes Only  
Production date : 9 August 2015

### Primary Livelihood

- Cash Remittances
- Food Assistance
- Humanitarian Assistance
- Low Skill Service
- No Livelihood
- Renting Property
- Retail Trade
- Skilled Service Labour
- Trade Vocation

### Camp Infrastructure

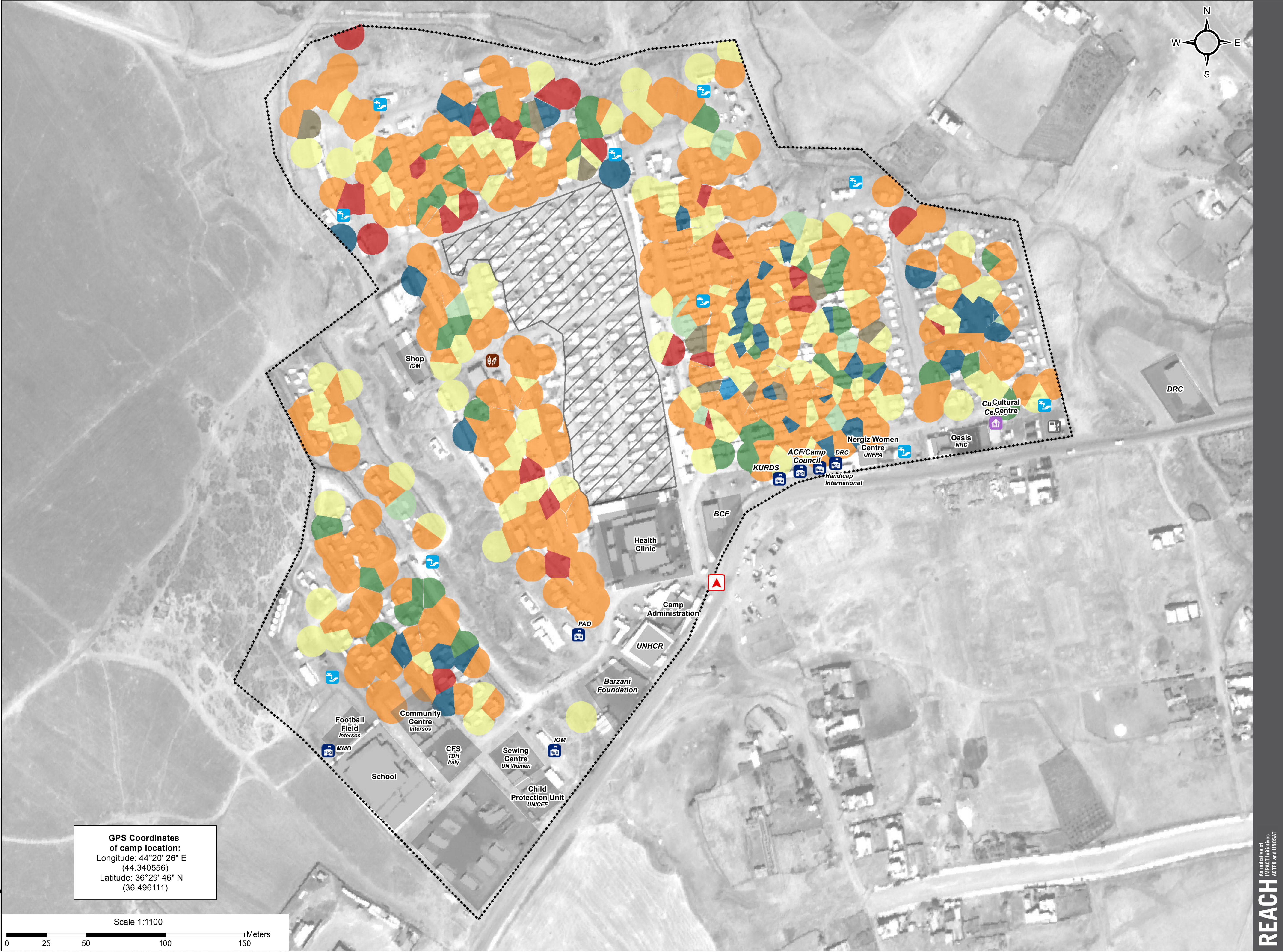
- Fence
- Unoccupied Area
- Office / Facility
- Entrance
- Camp Management
- NGO Office
- Community Area
- WASH Centre
- Bakery
- Fuel Tank

**Note:**  
Polygons representing households are generated by the ArcToolbox tool 'Create Thiessen Polygons' using the location recorded at each assessment.  
The polygons created are a spatial representation of the household area not a defined boundary of a household.

**Data Sources:**  
Thematic Data: 17/06/2015 - REACH  
Administrative boundaries: GADM  
Background imagery: 18/06/2014 DigitalGlobe  
Projection: WGS 1984 UTM Zone 38N

Contact : [iraq@reach-initiative.org](mailto:iraq@reach-initiative.org)  
File: IRQ\_Map\_Basirma\_IRQ\_Map\_Basirma\_CampSweepIndicators\_17Jun2015

**Note:** Data, designations and boundaries contained on this map are not warranted to be error-free and do not imply acceptance by the REACH partners, associates or donors mentioned on this map.



**GPS Coordinates of camp location:**  
Longitude: 44°20' 26" E (44.340556)  
Latitude: 36°29' 46" N (36.496111)

Scale 1:1100

0 25 50 100 150 Meters



# IRAQ - Erbil Governorate - Basirma Camp

## Food Security - June 2015

For Humanitarian Purposes Only  
Production date : 9 August 2015

- Food Security**
- Food Secure
  - Marginally Food Secure
  - Moderately Food Insecure
  - Severely Food Insecure

- Camp Infrastructure**
- Fence
  - Unoccupied Area
  - Office / Facility
  - Entrance
  - Camp Management
  - NGO Office
  - Community Area
  - WASH Centre
  - Bakery
  - Fuel Tank

**GPS Coordinates of camp location:**  
Longitude: 44°20' 26" E  
(44.340556)  
Latitude: 36°29' 46" N  
(36.496111)

**Note:**  
Polygons representing households are generated by the ArcToolbox tool 'Create Thiessen Polygons' using the location recorded at each assessment.  
The polygons created are a spatial representation of the household area not a defined boundary of a household.

**Data Sources:**  
Thematic Data: 17/06/2015 - REACH  
Administrative boundaries: GADM  
Background imagery: 18/06/2014 DigitalGlobe  
Projection: WGS 1984 UTM Zone 38N

Contact : [iraq@reach-initiative.org](mailto:iraq@reach-initiative.org)  
File: IRQ\_Map\_Basirma\_IRQ\_Map\_Basirma\_CampSweepIndicators\_17Jun2015

**Note:** Data, designations and boundaries contained on this map are not warranted to be error-free and do not imply acceptance by the REACH partners, associates or donors mentioned on this map.

