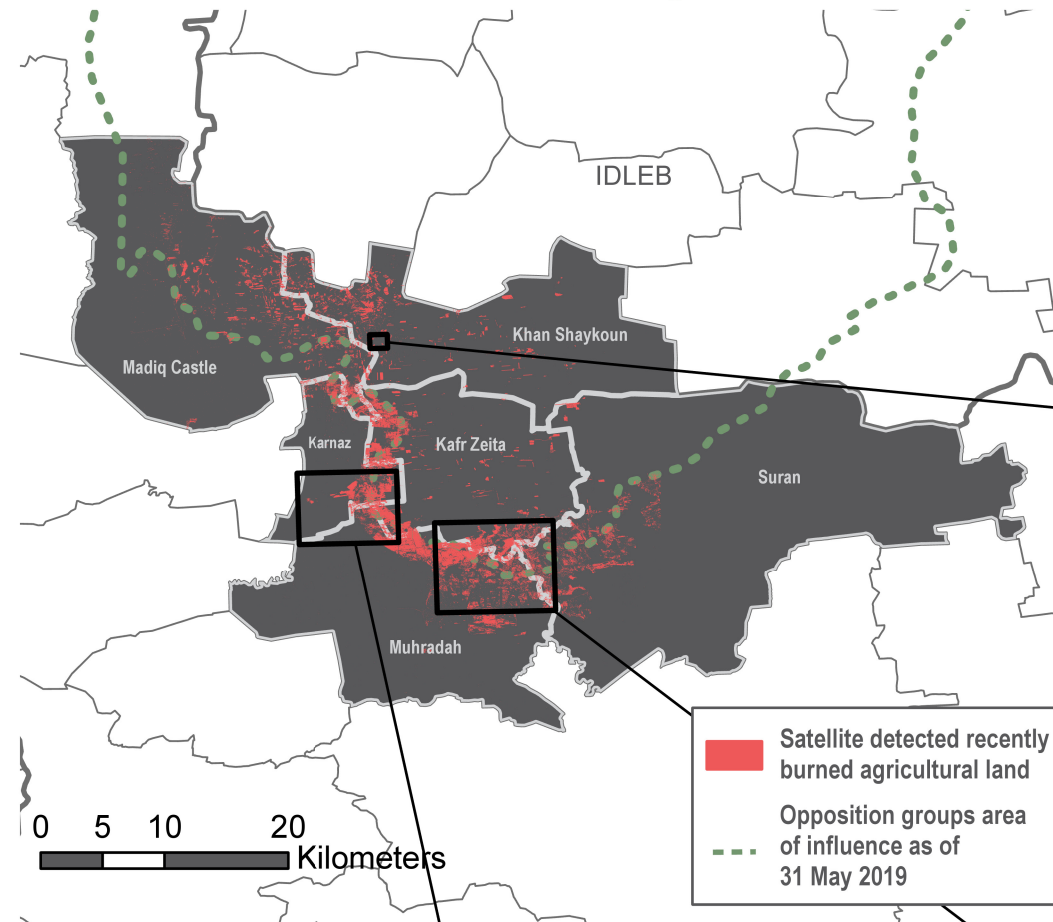
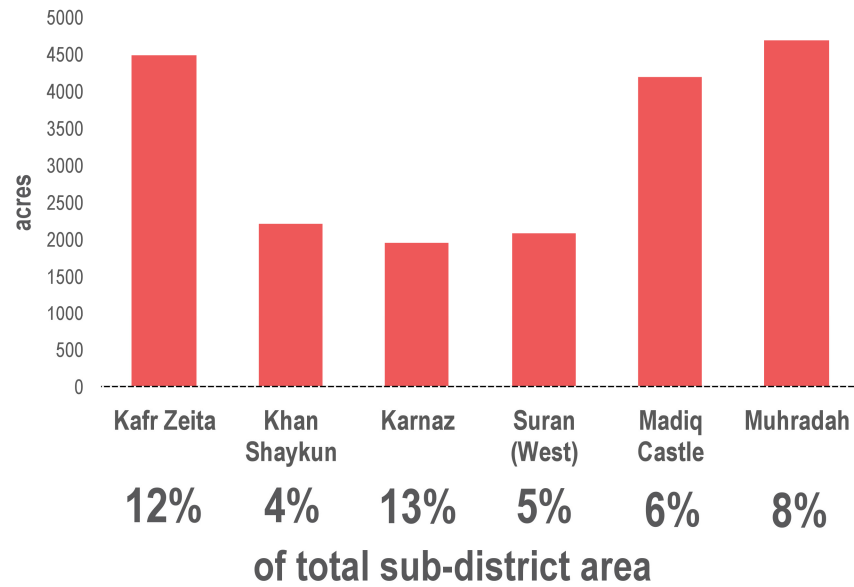


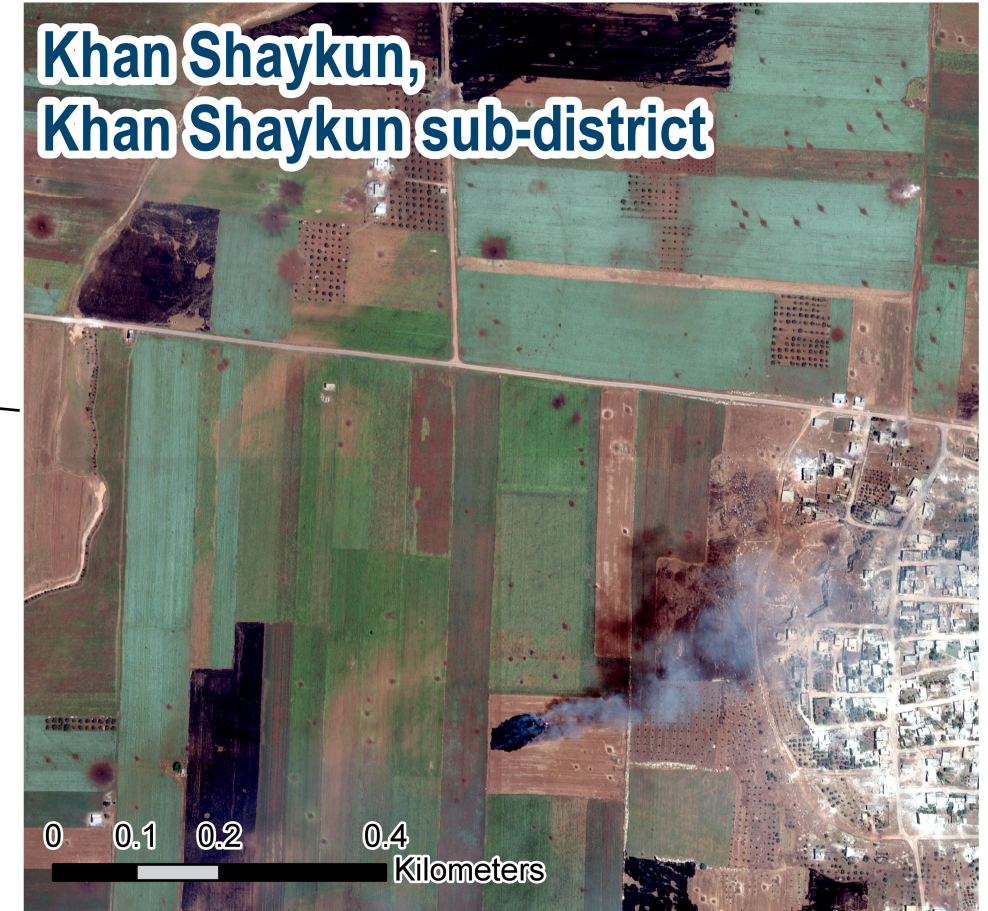


Number of acres recently burned

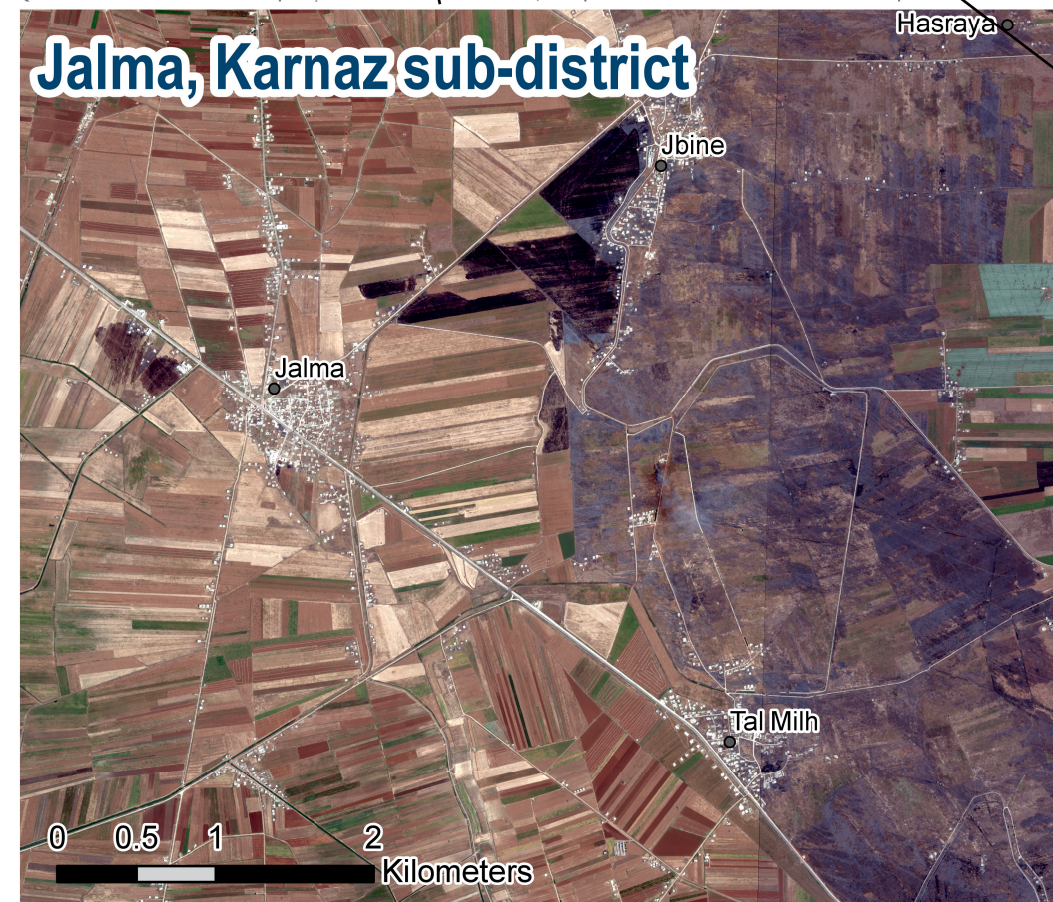
🔥 Roughly 18,000 acres



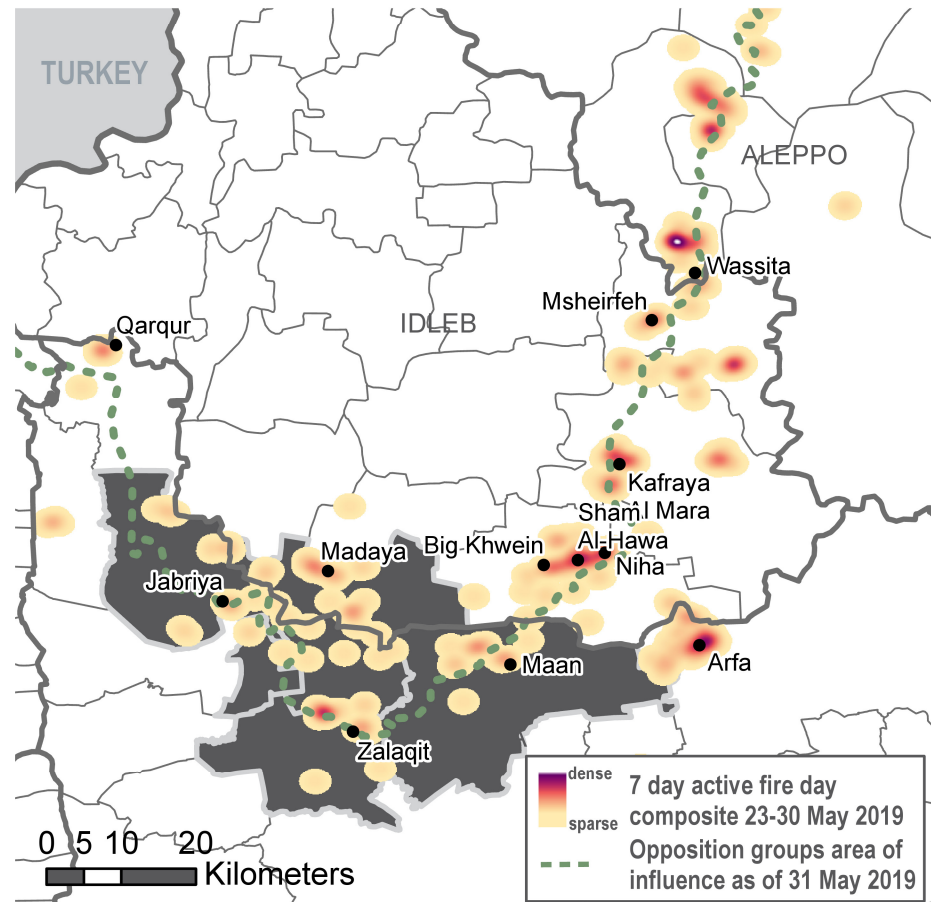
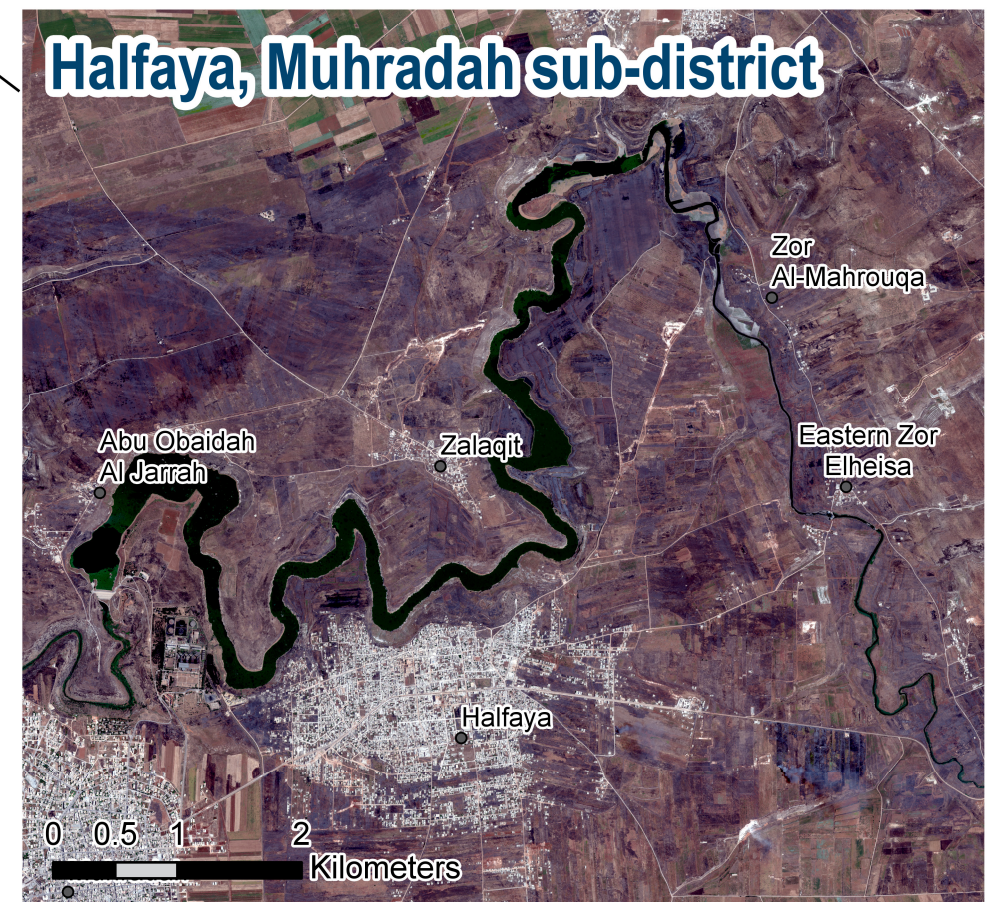
Khan Shaykun, Khan Shaykun sub-district



Jalma, Karnaz sub-district



Halfaya, Muhradah sub-district



Data sources:
7 day active fire day composite: NASA's Fire Information for Resource Management System (FIRMS) distributes Near Real-Time (NRT) active fire data from NASA's Visible Infrared Imaging Radiometer Suite (VIIRS).
We acknowledge the use of data and imagery from LANCE FIRMS operated by NASA's Earth Science Data and Information System (ESDIS) with funding provided by NASA Headquarters.
NRT VIIRS 375 m Active Fire product VNP14IMG1. Available on-line [<https://earthdata.nasa.gov/firms>]. doi:10.5067/FIRMS/VIIRS/VNP14IMG1.NRT.001.

Using high resolution multispectral imagery, remote sensing land classification techniques were used to assess recently burned agricultural areas in the assessed sub-districts of Kafr Zeita, Khan Shaykun, Karnaz, Suran West, Madiq Castle and Muhradah sub-districts in northwest Syria. Areas in purple on the satellite imagery are burnt agricultural land.

Satellite Imagery: WorldView-2 from 26 May 2019
Copyright: Imagery courtesy of DigitalGlobe
Source: US Department of State, Humanitarian Information Unit, NextView License
Coordinate System: GCS WGS 1984
Contact: mena.reach@impact-initiatives.org

Note: Data, designations and boundaries contained on this map are not warranted to be error-free and do not imply acceptance by the REACH partners, associates or donors mentioned on this map.