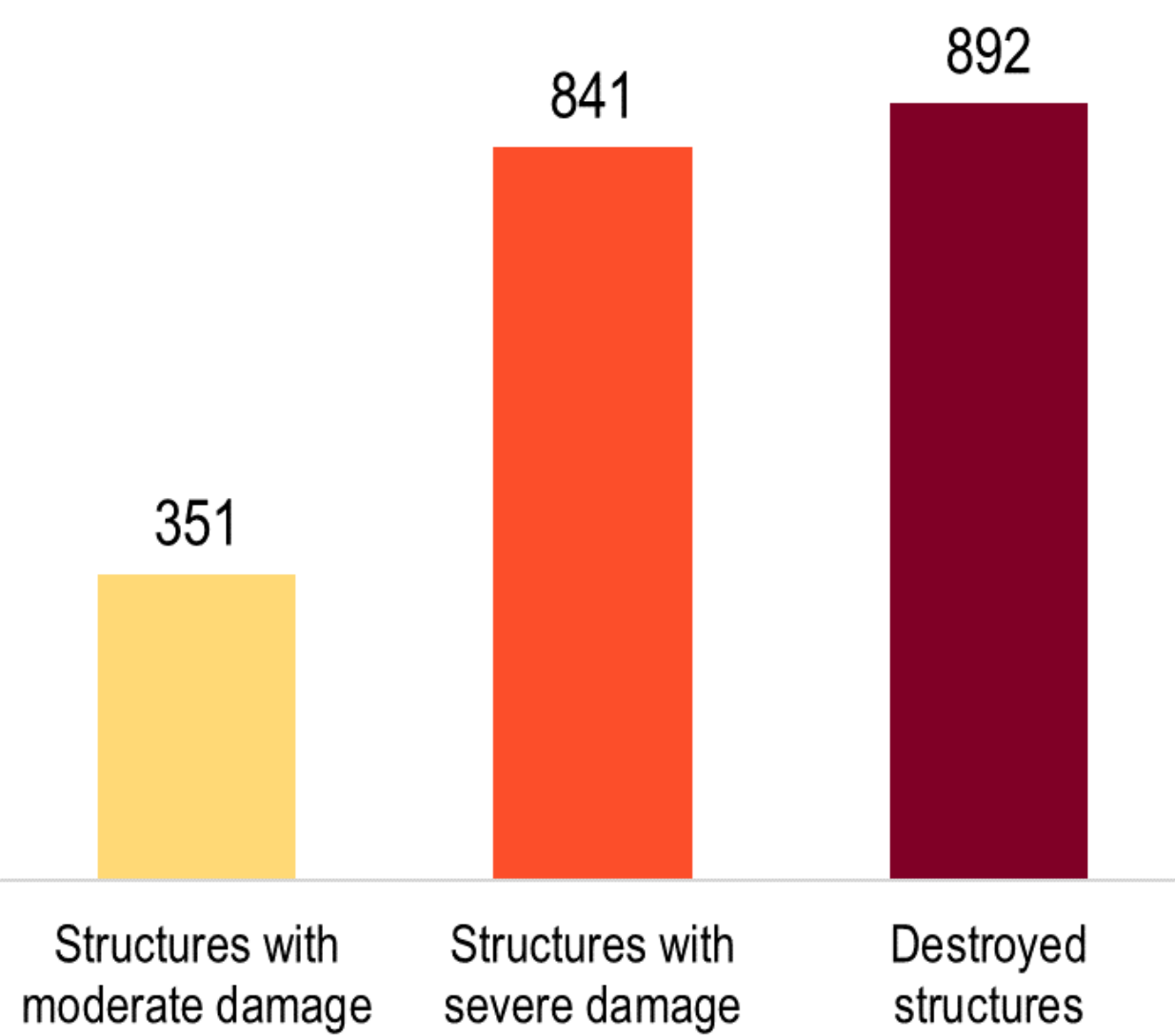


Arbin Summary

38% of Structures Damaged or Destroyed

Structure count by damage severity



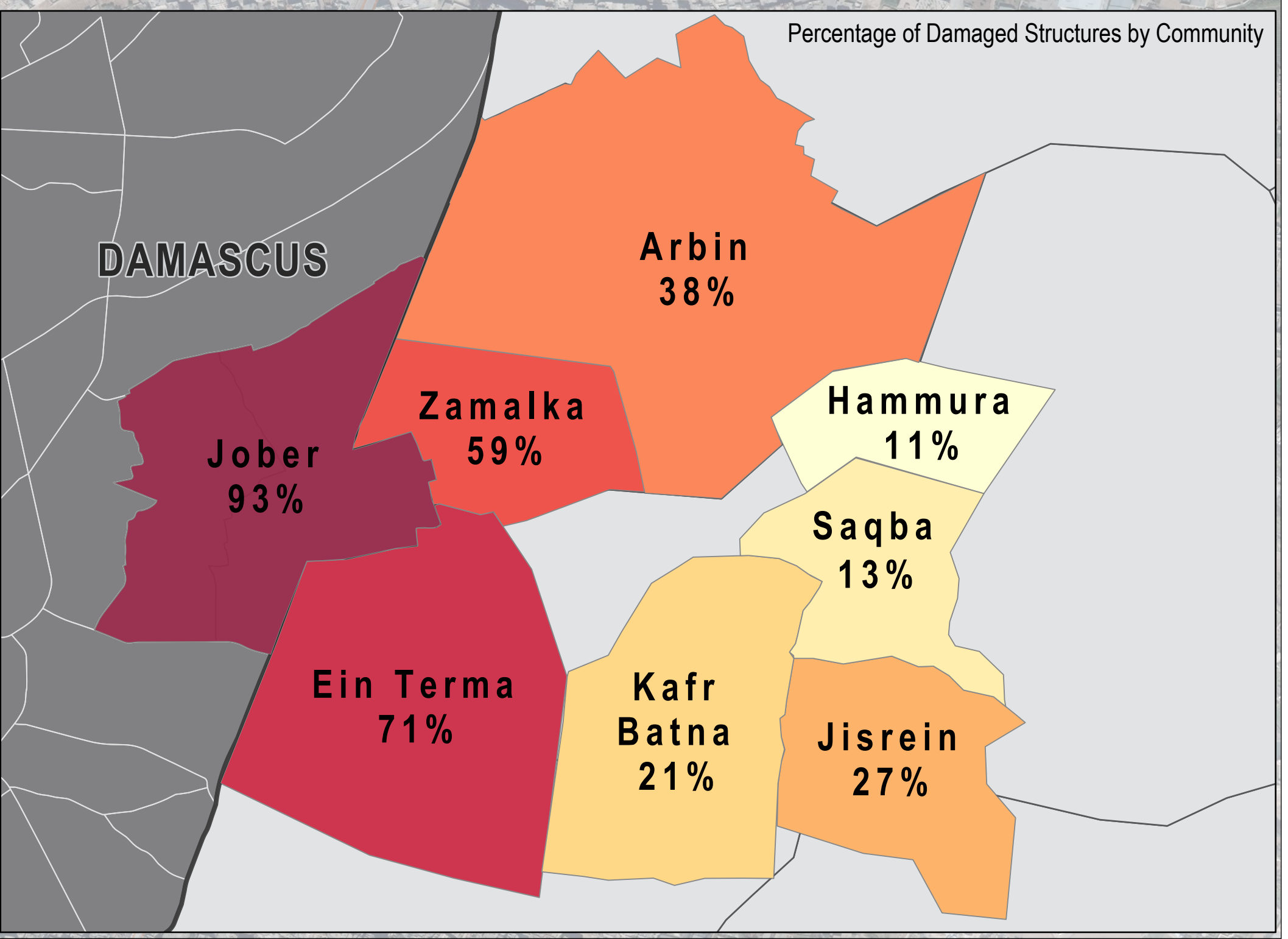
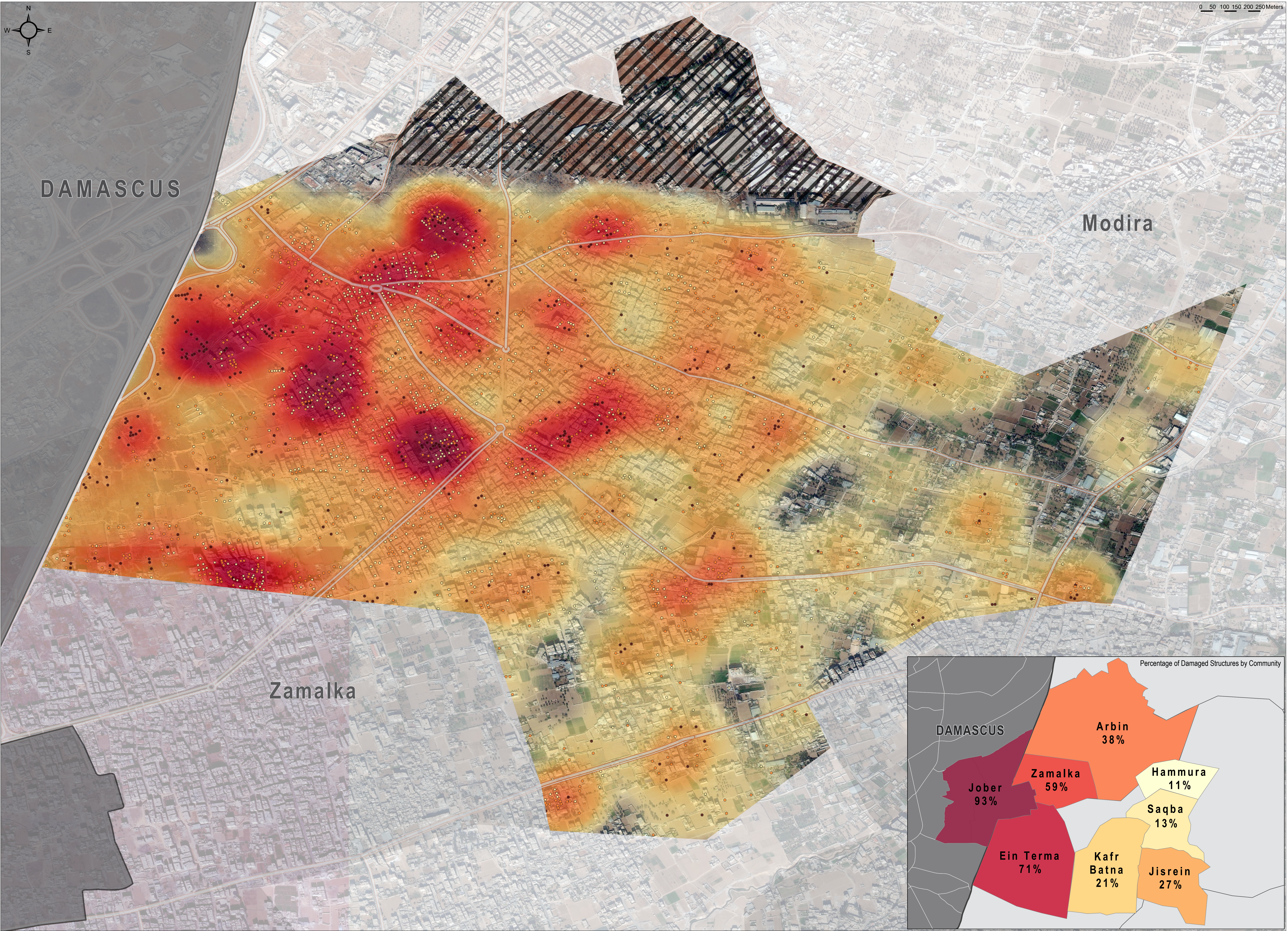
43,000 total population
of which 2,900 are IDPs

25-49% of preconflict population displaced from community

1-25% of remaining population are female

Arbin is a community in Eastern Ghouta, an agricultural region east of Damascus, that has been classified by the United Nations as besieged since 2013. The community reportedly has mobile clinics/field hospitals and informal emergency care points for medical facilities. Attacks on healthcare facilities have reportedly increased toward the end of 2017. In May 2017, Community Representatives reported that a field hospital was struck in Arbin, damaging the surgical wing of the facility. Meanwhile, pre-conflict primary, secondary, and high schools are reportedly functioning in the community. Nevertheless, schools were shut down during the month of November 2017 due to the reported risk of shelling. The water and electricity networks have been unavailable in the community since assessments began in June 2016.

Data source:
The above data was collected by REACH Initiative in late December 2017 (or in previous assessed months when specified) using the Community Profiles methodology, in which information is gathered from Community Representatives (CRs) residing within assessed communities who have sector-specific knowledge. Findings were triangulated through secondary sources, including humanitarian reports, and news and social media monitoring.



Damage Severity Density



* Severity calculated based on density of damaged infrastructure and weighted by scale of damaged based on; destroyed, severely damaged, or moderate damage.

Structure Damage Class

- Destroyed
- Severe Damage
- Moderate Damage

No damage analysis conducted

Satellite Data (1): WorldView-3 from 03 December 2017
Copyright: DigitalGlobe, Inc
Source: US Department of State, Humanitarian Information Unit, NextView License
Road Data: OpenStreetMap
Admin Data: UN OCHA
Analysis: UNITAR-UNOSAT
Production: REACH Initiatives

Analysis Conducted comparing:
Satellite Data (1): WorldView-3 from 03 December 2017
Copyright: DigitalGlobe, Inc
Source: US Department of State, Humanitarian Information Unit, NextView License

Satellite Data (2): WorldView-2 from 20 November 2017
Copyright: DigitalGlobe, Inc
Source: US Department of State, Humanitarian Information Unit, NextView License

Note: Data, designations and boundaries contained on this map are not warranted to be error-free and do not imply acceptance by the REACH partners, associates or donors mentioned on this map.