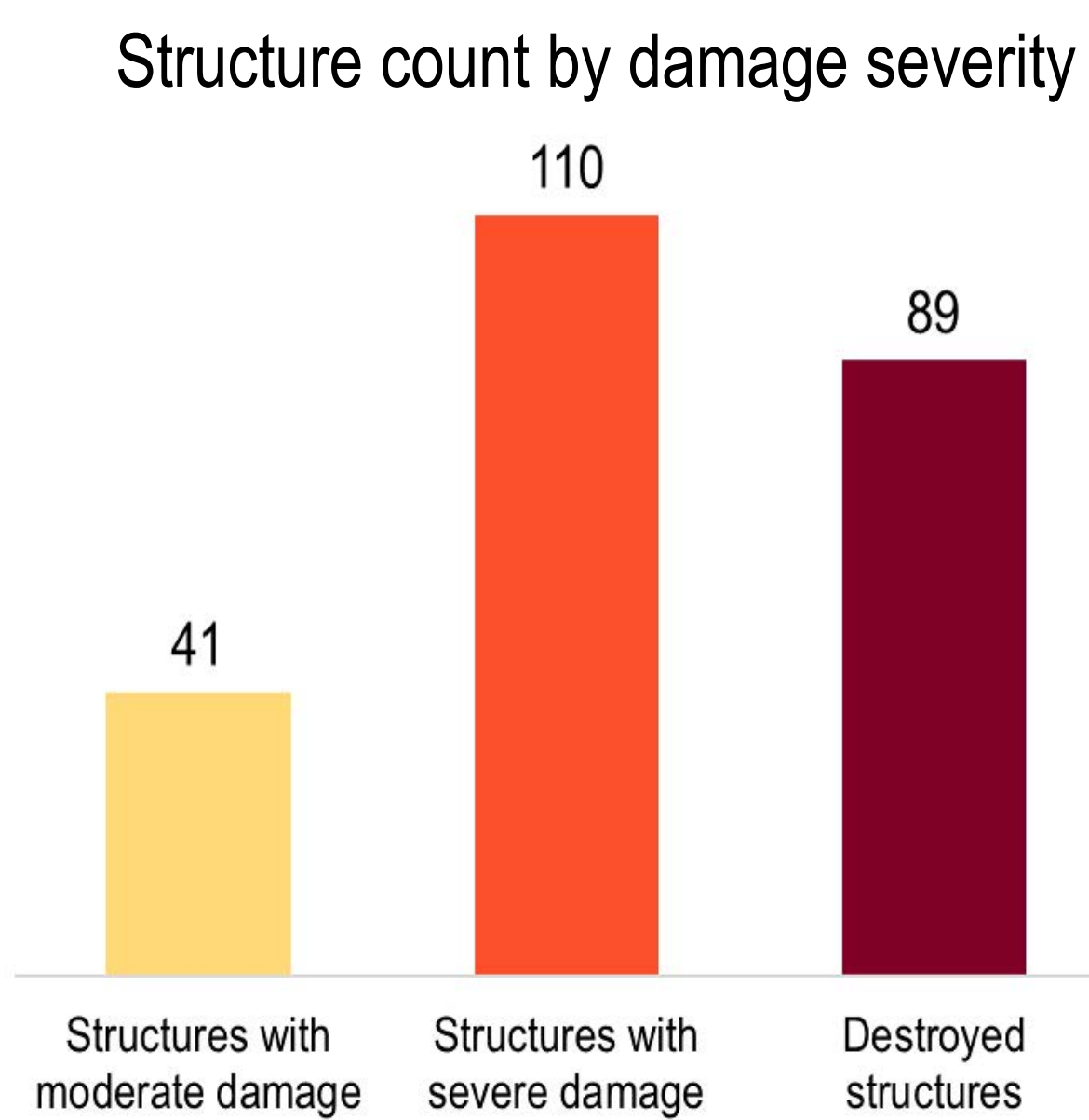


### Saqba Summary

**13%** of Structures Damaged or Destroyed



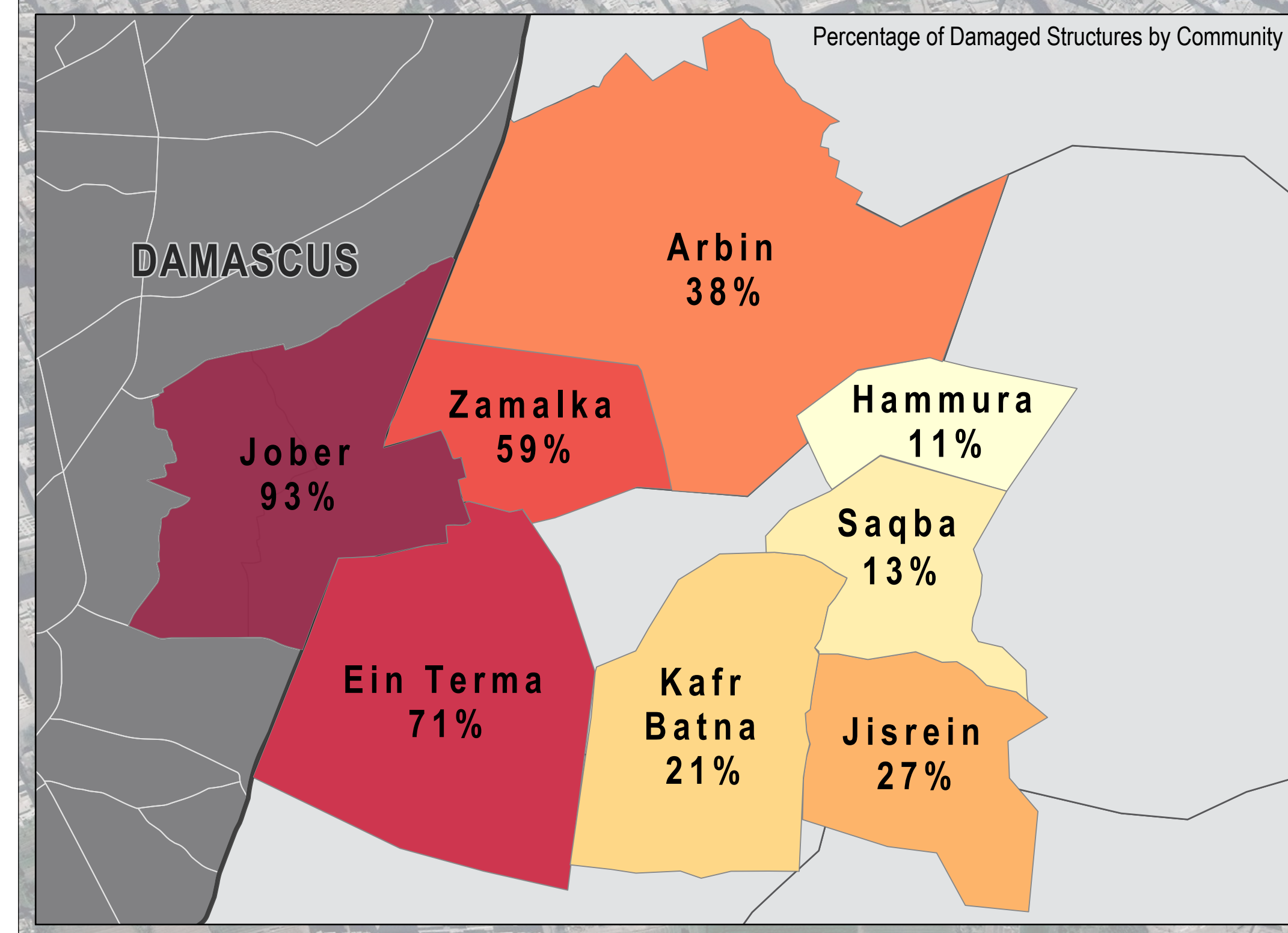
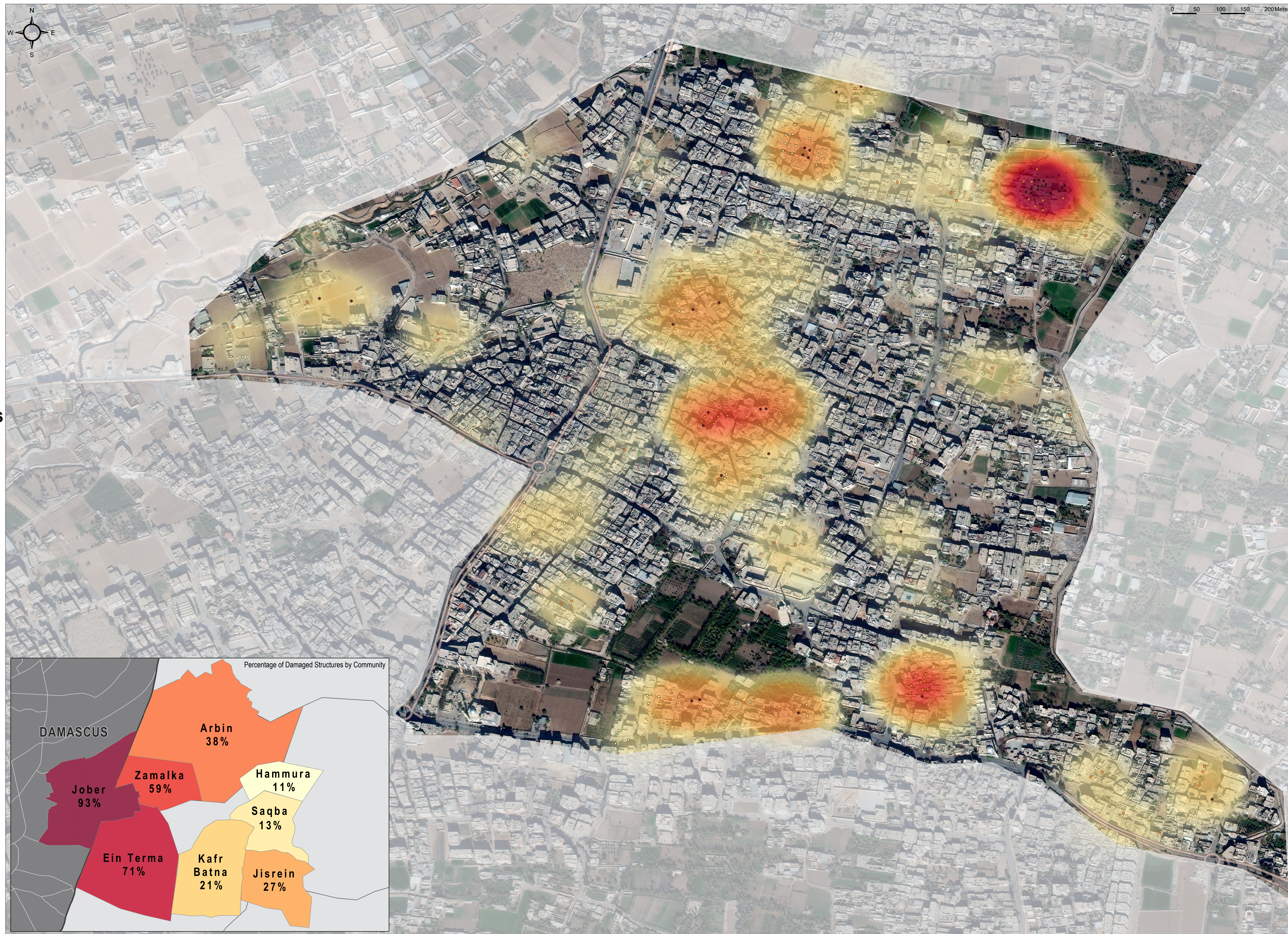
**53,500 total population**  
of which **28,500 are IDPs**

**50-74% of preconflict population displaced from community**

**26-50% of remaining population are female**

Saqba is a community located in central Eastern Ghouta, an agricultural region east of Damascus that has been classified by the United Nations as besieged since 2013. Due to the community's central location within Eastern Ghouta, the number of structures damaged is lower than in assessed communities neighbouring Damascus. Despite the lower extent of damage, Saqba has still witnessed major displacement and shelling. Over half of the current population are reported to be IDPs. Saqba is currently the second most populated assessed community by REACH in Eastern Ghouta and hosts the largest number of IDPs. The community reportedly has pre-conflict primary, secondary, and high schools, in addition informal schools have been set up underground to protect students and teachers from shelling. In November 2017, a school in Saqba was struck according to Community Representatives. Schools across Eastern Ghouta reportedly closed during the month of November 2017 due to the risk of shelling. Of the ten communities assessed by REACH in Eastern Ghouta, Saqba is one of only four that have at least one pre-conflict hospital that is still functioning. The water and electricity networks have been unavailable in the community since assessments began in June 2016.

Data source:  
The above data was collected by REACH Initiative in late December 2017 (or in previous assessed months when specified) using the Community Profiles methodology, in which information is gathered from Community Representatives (CRs) residing within assessed communities who have sector-specific knowledge. Findings were triangulated through secondary sources, including humanitarian reports, and news and social media monitoring.



### Damage Severity Density

High



\* Severity calculated based on density of damaged infrastructure and weighted by scale of damaged based on; destroyed, severely damaged, or moderate damage.

### Structure Damage Class

- Low
- Destroyed
  - Severe Damage
  - Moderate Damage

Satellite Data (1): WorldView-3 from 03 December 2017  
Copyright: DigitalGlobe, Inc  
Source: US Department of State, Humanitarian Information Unit, NextView License  
Road Data: OpenStreetMap  
Admin Data: UN OCHA  
Analysis: UNITAR-UNOSAT  
Production: REACH Initiatives

Analysis Conducted comparing:  
Satellite Data (1): WorldView-3 from 03 December 2017  
Copyright: DigitalGlobe, Inc  
Source: US Department of State, Humanitarian Information Unit, NextView License

Satellite Data (2): WorldView-2 from 20 November 2017  
Copyright: DigitalGlobe, Inc  
Source: US Department of State, Humanitarian Information Unit, NextView License

Note: Data, designations and boundaries contained on this map are not warranted to be error-free and do not imply acceptance by the REACH partners, associates or donors mentioned on this map.