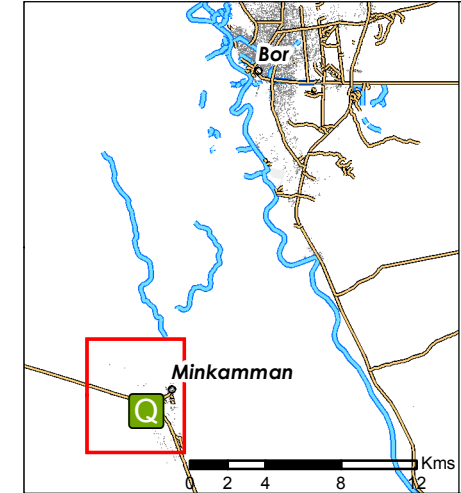
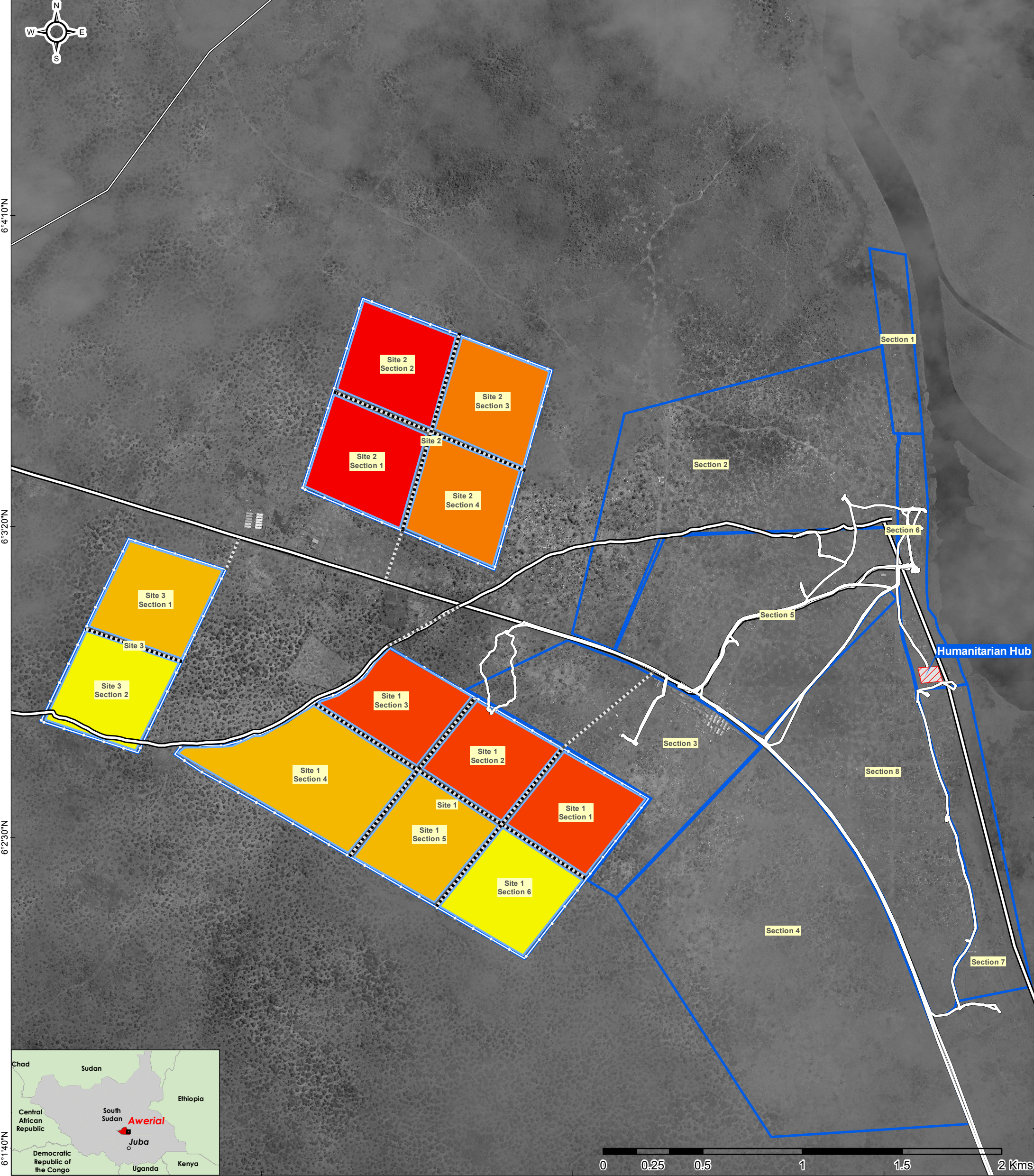


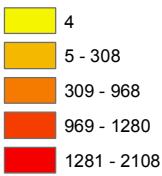
South Sudan - Awerial Area IDP Sites
Estimated Number of Individuals per Section (July 2014)

For Humanitarian Relief Purposes Only
Production date: 30 July 2014

31°29'10"E 31°30'0"E 31°30'50"E



Number of Individuals



The number of individuals at the Mingkaman New IDP Sites was estimated combining the registration data which recorded on average 4 individuals per shelter and the manual assessment of Worldview-2 satellite image acquired on 3 July 2014 which detected approximately 13,492 shelters. The registration has only been conducted for the new sites. The individuals and shelter numbers have not yet been verified on the ground.

IDP Site



A product of: REACH
Map production: ACTED
Data sources:
Satellite Data: UNOSAT
Image Copyright: DigitalGlobe, 21.04.2014, Imagery provided by:
U.S. Department of State, Humanitarian Information Unit,
NextView License
Shelter points: UNOSAT, 3 July 2014
Registration data: ACTED
Site sections: ACTED : Roads, buildings: Open Street Map
Coordinate System: WGS 1984 UTM Zone 34N
File: SSD_Awerial_IDP_IDP_Nb_29Jul2014_A3
Contact: reach.mapping@impact-initiatives.org

Note: Data, designations and boundaries contained on this map are not warranted to error-free and do not imply acceptance by the REACH partners, associated, donors mentioned on this map. The views expressed in this document are solely the responsibility of REACH. The document should not be taken, in any way, to reflect the official position of the donors.

Funded by:



Humanitarian Aid
and Civil Protection