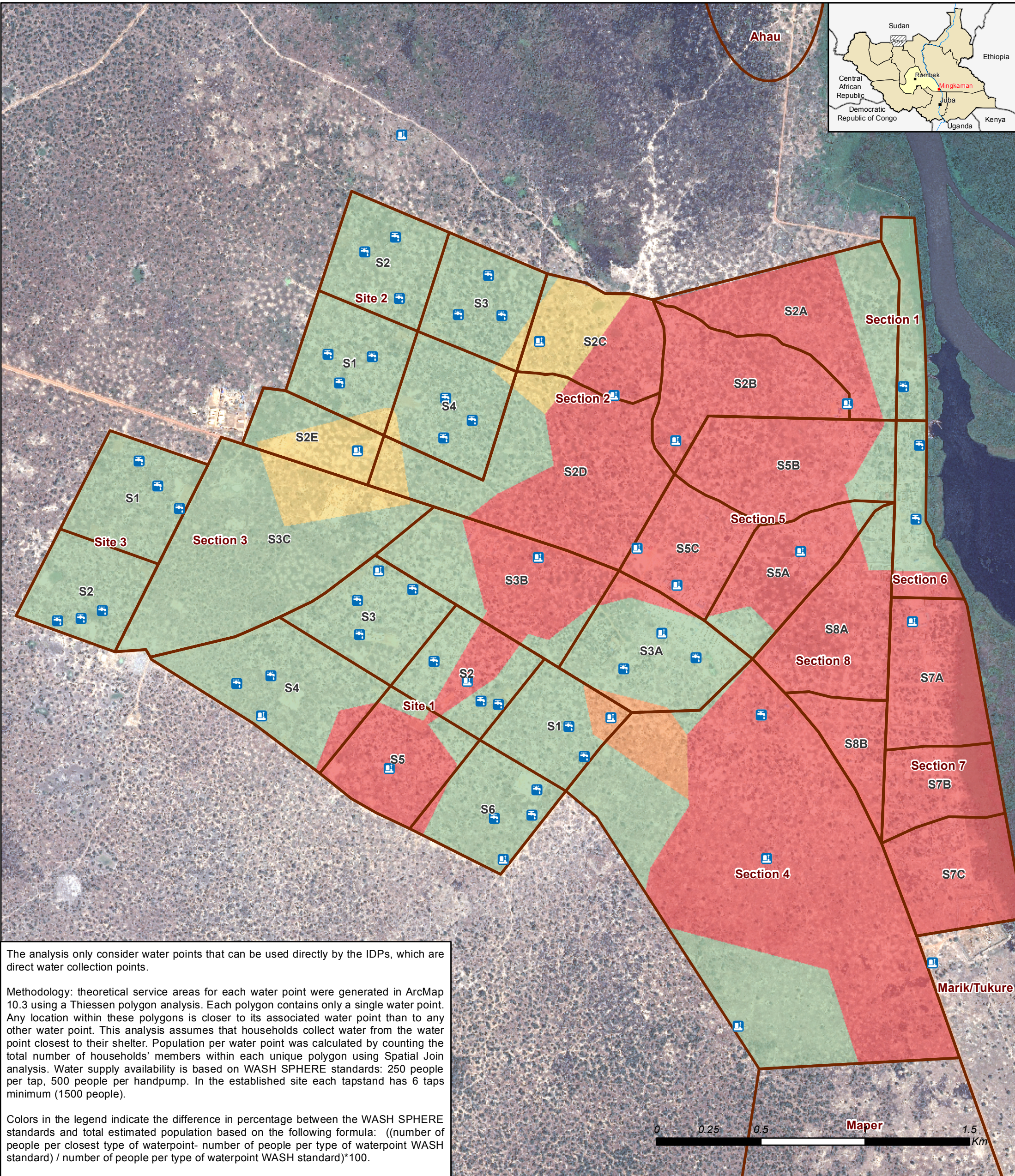


Population per water point in the established site of Mingkaman informal settlement - Water supplies availability



The analysis only consider water points that can be used directly by the IDPs, which are direct water collection points.

Methodology: theoretical service areas for each water point were generated in ArcMap 10.3 using a Thiessen polygon analysis. Each polygon contains only a single water point. Any location within these polygons is closer to its associated water point than to any other water point. This analysis assumes that households collect water from the water point closest to their shelter. Population per water point was calculated by counting the total number of households' members within each unique polygon using Spatial Join analysis. Water supply availability is based on WASH SPHERE standards: 250 people per tap, 500 people per handpump. In the established site each tapstand has 6 taps minimum (1500 people).

Colors in the legend indicate the difference in percentage between the WASH SPHERE standards and total estimated population based on the following formula: $((\text{number of people per closest type of waterpoint} - \text{number of people per type of waterpoint WASH standard}) / \text{number of people per type of waterpoint WASH standard}) * 100$.

Site structure	Delta (%) between maximum (WASH) and total population per waterpoint	Number of IDPs per waterpoint												
Site structure	meets WASH Standards	<table border="1"> <thead> <tr> <th colspan="2">Population per waterpoint</th> </tr> <tr> <th>handpump</th> <th>tapstand</th> </tr> </thead> <tbody> <tr> <td> 0 - 500</td> <td> 0 - 1500</td> </tr> <tr> <td> 501 - 750</td> <td> 1501 - 2250</td> </tr> <tr> <td> 751 - 875</td> <td> 2251 - 2625</td> </tr> <tr> <td> > 875</td> <td> > 2625</td> </tr> </tbody> </table>	Population per waterpoint		handpump	tapstand	0 - 500	0 - 1500	501 - 750	1501 - 2250	751 - 875	2251 - 2625	> 875	> 2625
Population per waterpoint														
handpump	tapstand													
0 - 500	0 - 1500													
501 - 750	1501 - 2250													
751 - 875	2251 - 2625													
> 875	> 2625													
Site Main division	1 - 25% above													
Site Sub-division	26 - 50% above													
WASH facilities	51 - 75% above													
handpump	> 75%													
tapstand														

Image: ©CNES 2015, distribution AIRBUS DS, France, all rights reserved, 16.12.2015
 Site facilities: Oxfam, ACTED (maintained by RWASSA); Roads: UNOPS
 Coordinate System: WGS 1984 UTM zone 36N
 Contact: south.sudan@reach-initiative.org
 REACH_SSD_Map_Awerial_PopWaterpoint_Camp_MingkamanSite_15January2016_A3

Note: Data, designations and boundaries contained on this map are not warranted to be error-free and do not imply acceptance by the REACH partners, associated, donors mentioned on this map.

Funded by

Humanitarian Aid and Civil Protection

USAID
FROM THE AMERICAN PEOPLE