

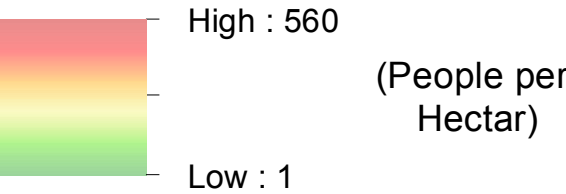


IRAQ - Erbil Governorate - Qushtapa Camp

Population Density - June 2015

For Humanitarian Purposes Only
Production date : 9 August 2015

Population Density



Camp Infrastructure

- Fence
- Unoccupied Area
- Office / Facility
- Entrance
- NGO Office
- Registration
- Mosque
- Community Area
- Borehole
- Men's Wash Centre
- Women's Wash Centre
- Bakery
- Fuel Depot

GPS Coordinates of camp location:
Longitude: 44° 2' 9.786" E (44.036052)
Latitude: 35° 59' 1.827" N (35.983841)

Thematic Data: 17/06/2015 - REACH
Administrative boundaries: GADM
Background imagery: 14/04/2014 DigitalGlobe
Projection: WGS 1984 UTM Zone 38N

Contact : iraq@reach-initiative.org
File: IRQ_Map_Qushtapa_CampSweepIndicators_17Jun2015

Note: Data, designations and boundaries contained on this map are not warranted to be error-free and do not imply acceptance by the REACH partners, associates or donors mentioned on this map.





IRAQ - Erbil Governorate - Qushtapa Camp

Mothly Income - June 2015

For Humanitarian Purposes Only
Production date : 9 August 2015

Monthly Income in USD

- 0 \$ - 250 \$
- 251 \$ - 500 \$
- 501 \$ - 600 \$
- 601 \$ - 800 \$
- 801 \$ - 3750 \$

Camp Infrastructure

- Fence
- Unoccupied Area
- Office / Facility
- Entrance
- NGO Office
- Registration
- Mosque
- Community Area
- Borehole
- Men's Wash Centre
- Women's Wash Centre
- Bakery
- Fuel Depot

Note:
Polygons representing households are generated by the ArcToolbox tool 'Create Thiessen Polygons' using the location recorded at each assessment. The polygons created are a spatial representation of the household area not a defined boundary of a household.

Data Sources:
Thematic Data: 8/12/2014 - REACH
Administrative boundaries: GADM
Background imagery: 14/04/2014 DigitalGlobe
Projection: WGS 1984 UTM Zone 38N

Contact : iraq@reach-initiative.org
File: IRQ_Map_Qushtapa_CampSweepIndicators_17Jun2015

Note: Data, designations and boundaries contained on this map are not warranted to be error-free and do not imply acceptance by the REACH partners, associates or donors mentioned on this map.





IRAQ - Erbil Governorate - Qushtapa Camp

Shelter Types - June 2015

For Humanitarian Purposes Only
Production date : 9 August 2015

- Shelter Type**
 - Permanent Shelter
 - Tent With Block
 - Tent Without Block
- Camp Infrastructure**
 - Fence
 - Unoccupied Area
 - Office / Facility
 - Entrance
 - NGO Office
 - Registration
 - Mosque
 - Community Area
 - Borehole
 - Men's Wash Centre
 - Women's Wash Centre
 - Bakery
 - Fuel Depot

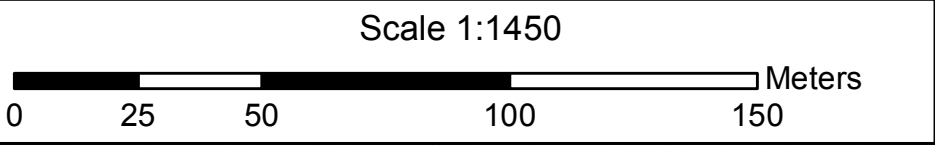
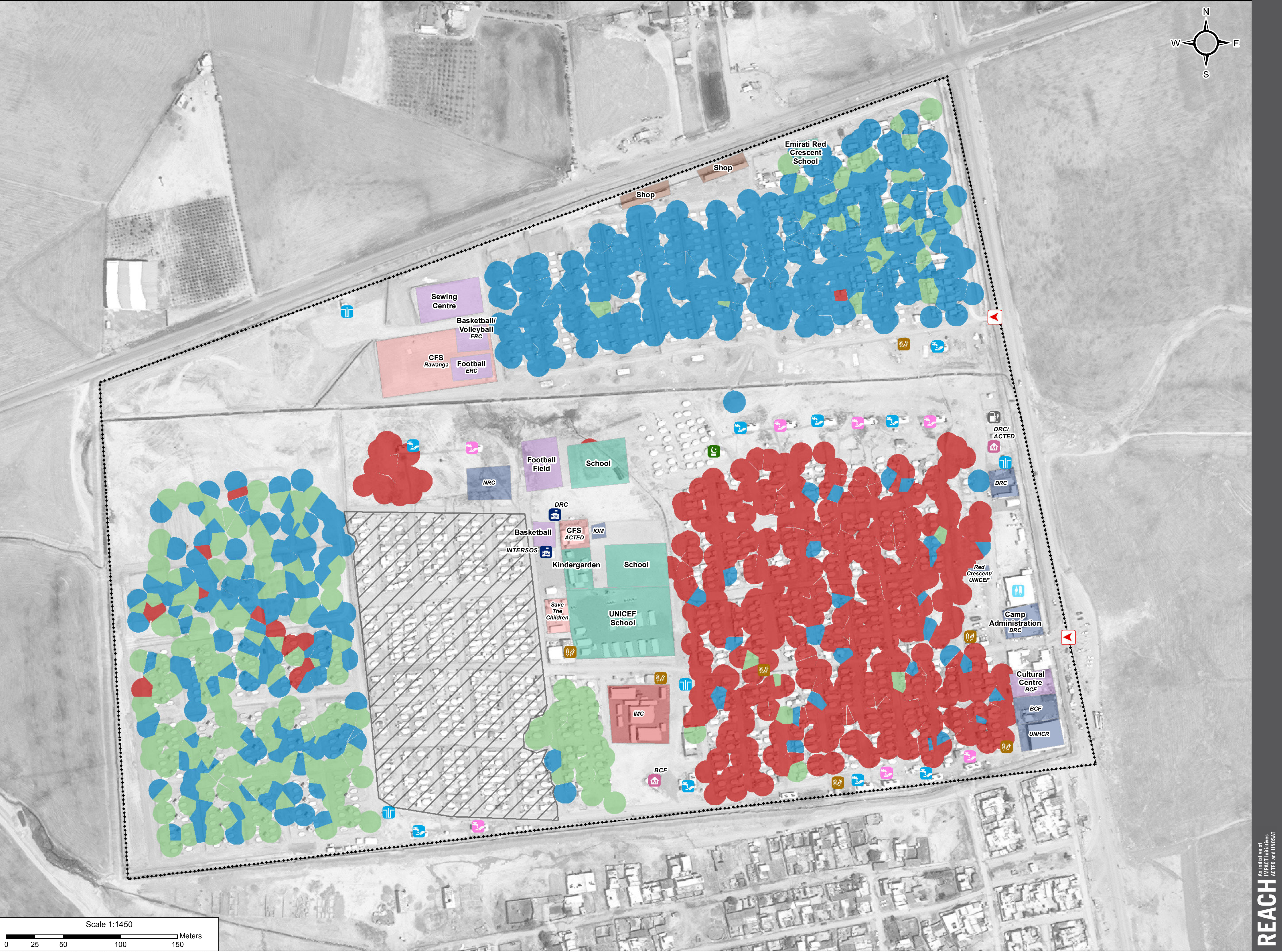
GPS Coordinates of camp location:
Longitude: 44° 2' 9.786" E
(44.036052)
Latitude: 35° 59' 1.827" N
(35.983841)

Note:
Polygons representing households are generated by the ArcToolbox tool 'Create Thiessen Polygons' using the location recorded at each assessment.
The polygons created are a spatial representation of the household area not a defined boundary of a household.

Data Sources:
Thematic Data: 8/12/2014 - REACH
Administrative boundaries: GADM
Background imagery: 14/04/2014 DigitalGlobe
Projection: WGS 1984 UTM Zone 38N

Contact : iraq@reach-initiative.org
File: IRQ_Map_Qushtapa_CampSweepIndicators_17Jun2015

Note: Data, designations and boundaries contained on this map are not warranted to be error-free and do not imply acceptance by the REACH partners, associates or donors mentioned on this map.





IRAQ - Erbil Governorate - Qushtapa Camp

Primary Livelihood - June 2015

For Humanitarian Purposes Only
Production date : 9 August 2015

Primary Livelihood

- Cash Remittances
- Food Assistance
- Humanitarian Assistance
- Low Skill Service
- No Livelihood
- Renting Property
- Retail Trade
- Skilled Service Labour
- Trade Vocation

Camp Infrastructure

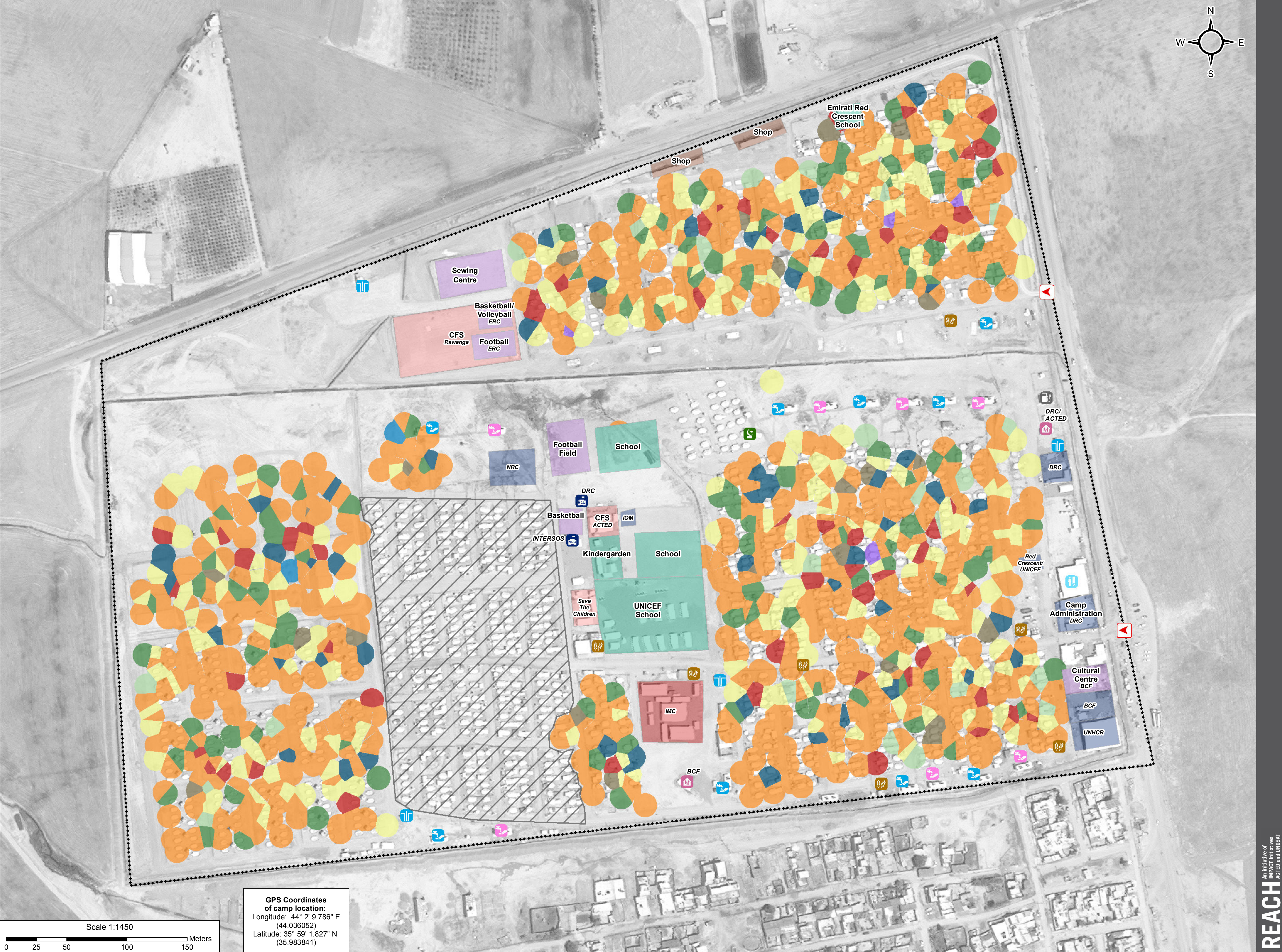
- Fence
- Unoccupied Area
- Office / Facility
- Entrance
- NGO Office
- Registration
- Mosque
- Community Area
- Borehole
- Men's Wash Centre
- Women's Wash Centre
- Bakery
- Fuel Depot

Note:
Polygons representing households are generated by the ArcToolbox tool 'Create Thiessen Polygons' using the location recorded at each assessment. The polygons created are a spatial representation of the household area not a defined boundary of a household.

Data Sources:
Thematic Data: 8/12/2014 - REACH
Administrative boundaries: GADM
Background imagery: 14/04/2014 DigitalGlobe
Projection: WGS 1984 UTM Zone 38N

Contact : iraq@reach-initiative.org
File: IRQ_Map_Qushtapa_CampSweepIndicators_17Jun2015

Note: Data, designations and boundaries contained on this map are not warranted to be error-free and do not imply acceptance by the REACH partners, associates or donors mentioned on this map.





IRAQ - Erbil Governorate - Qushtapa Camp

Food Security - June 2015

For Humanitarian Purposes Only
Production date : 9 August 2015

- Food Security**
- Food Secure
 - Marginally Food Secure
 - Moderately Food Insecure
 - Severely Food Insecure

- Camp Infrastructure**
- Fence
 - Unoccupied Area
 - Office / Facility
 - Entrance
 - NGO Office
 - Registration
 - Mosque
 - Community Area
 - Borehole
 - Men's Wash Centre
 - Women's Wash Centre
 - Bakery
 - Fuel Depot

GPS Coordinates of camp location:
Longitude: 44° 2' 9.786" E (44.036052)
Latitude: 35° 59' 1.827" N (35.983841)

Note:
Polygons representing households are generated by the ArcToolbox tool 'Create Thiessen Polygons' using the location recorded at each assessment. The polygons created are a spatial representation of the household area not a defined boundary of a household.

Data Sources:
Thematic Data: 8/12/2014 - REACH
Administrative boundaries: GADM
Background imagery: 14/04/2014 DigitalGlobe
Projection: WGS 1984 UTM Zone 38N

Contact : iraq@reach-initiative.org
File: IRQ_Map_Qushtapa_CampSweepIndicators_17Jun2015

Note: Data, designations and boundaries contained on this map are not warranted to be error-free and do not imply acceptance by the REACH partners, associates or donors mentioned on this map.

