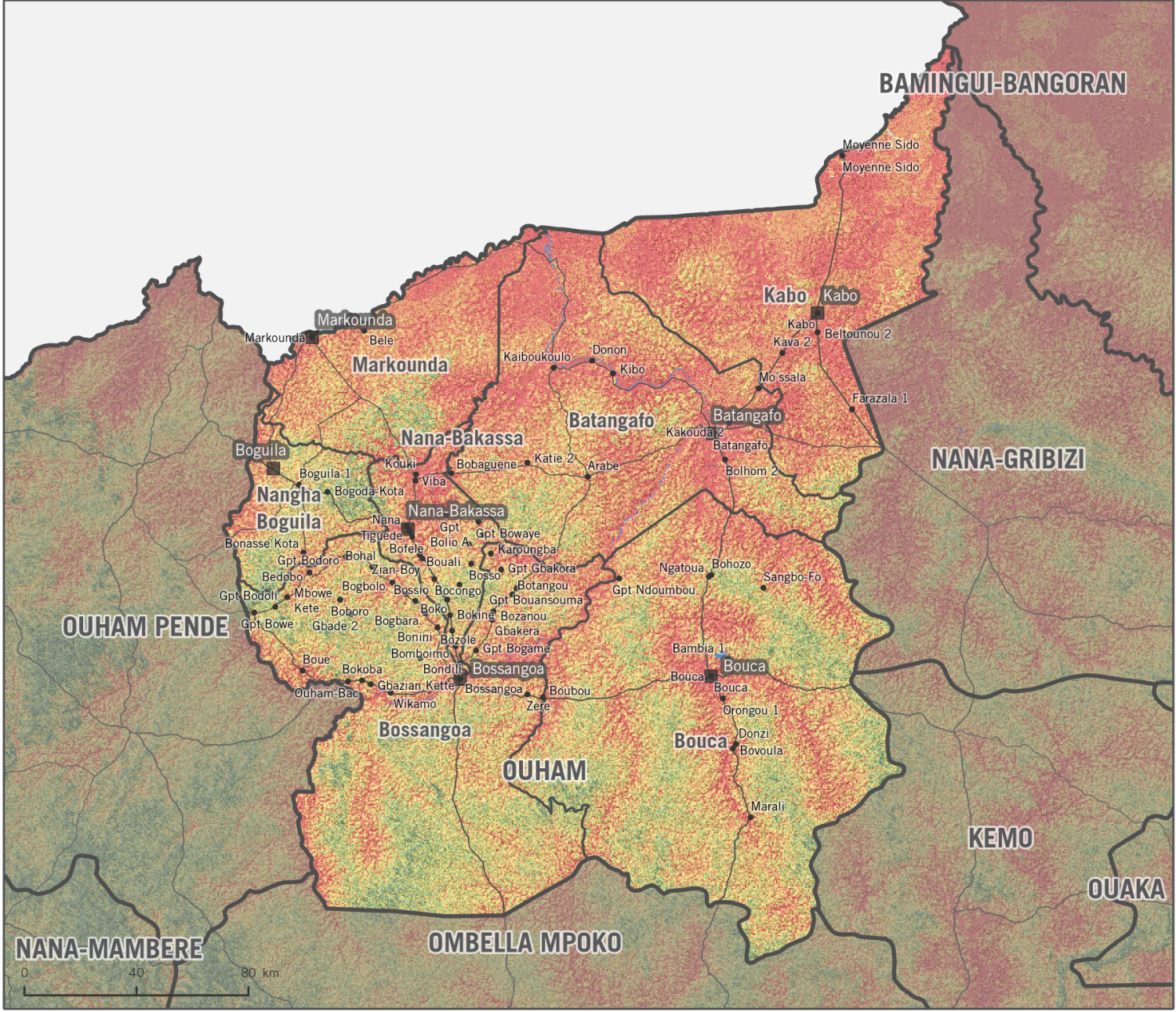


# CENTRAL AFRICAN REPUBLIC - Flood Susceptibility and Risk

## Ouham Prefecture

Intended for humanitarian use  
Production date : June 2020



**Susceptibility**  
Susceptibility was calculated through weighted linear combination analysis of the following data: soil drainage, landcover, slope, elevation, rain intensity, rain duration, topographic wetness index, height above nearest drainage, drainage density.

The map shows relative flood susceptibility across the surface of Central African Republic based on physical land features and rainfall patterns

**Risk**  
Risk was calculated using measurements of flood hazard (susceptibility), exposure, and vulnerability. **Hazard** is an average of the flood susceptibility score in populated areas. **Exposure** is measured as the proportion of people living in high/very high flood susceptibility areas. **Vulnerability** is a composite measure of housing structure fragility, food insecurity, low financial resilience, IDPs, youth, unaccompanied youth, elderly, and disabled persons.

Prefecture	Sub-Prefecture	Vulnerability Score	Susceptibility Hazard Score	People in High/Very High Flood Risk Area %	People in High/Very High Flood Risk Area #	FINAL RISK SCORE
Ombella M'Poko		1	4.28	74%	328,368	high
Lobaye		3	3.59	53%	161,627	low
Mambéré-Kadéï		2	2.87	27%	122,892	very low
Nana-Mambéré		2	2.86	9%	21,826	very low
Sangha-Mbaéré		3	3.65	59%	74,824	medium
Douha Pendé		3	2.77	24%	116,132	low
Ouham		2	4.08	74%	334,118	medium
	Batangafo	2	4.50	92%	72,290	high
	Bossangoa	2	3.82	59%	87,645	medium
	Bouca	3	4.26	88%	53,463	very high
	Kabo	3	4.60	99%	49,898	very high
	Markounda	3	4.28	89%	28,113	very high
	Nana-Bakassa	3	3.85	69%	39,385	high
	Nangha Boguila	3	3.45	45%	12,423	medium
Kémo		3	4.13	78%	186,957	high
Nana-Gribizi		2	4.84	72%	181,176	medium
Ouaka		3	3.80	65%	248,238	medium
Bamingui-Bangoran		2	3.99	78%	41,846	medium
Haute-Kotto		2	4.19	81%	91,422	high
Vakaga		2	4.39	91%	59,101	high
Basse-Kotto		3	3.73	63%	198,788	medium
Mbomou		1	4.12	79%	163,962	medium
Haut-Mbomou		4	3.43	57%	47,450	low
Bangui		2	4.80	98%	858,552	high



- Flood Susceptibility**
- Very Low
  - Low
  - Medium
  - High
  - Very High
- Capitals
- Settlements (>1,000)
  - Primary Roads
  - Secondary Roads
  - Surface Water

Data sources:  
Administrative Boundaries- UNOCHA  
Surface Water- ESA Climate Change Initiative, 20m Africa Land Cover 2016  
Flood Susceptibility- REACH Initiatives CAR  
Coordinate System: GCS WGS 1984

File:  
REACH\_CAR\_Map\_FloodRisk\_Ouham\_11JUN2020\_A4  
Contact:  
reach.mapping@impact-initiatives.org

Note: Data, designations and boundaries contained on this map are not warranted to be error-free and do not imply acceptance by the REACH partners, associates, donors mentioned on this map.  
**See methodology at the CAR REACH Resource Centre link**

Funded by:

