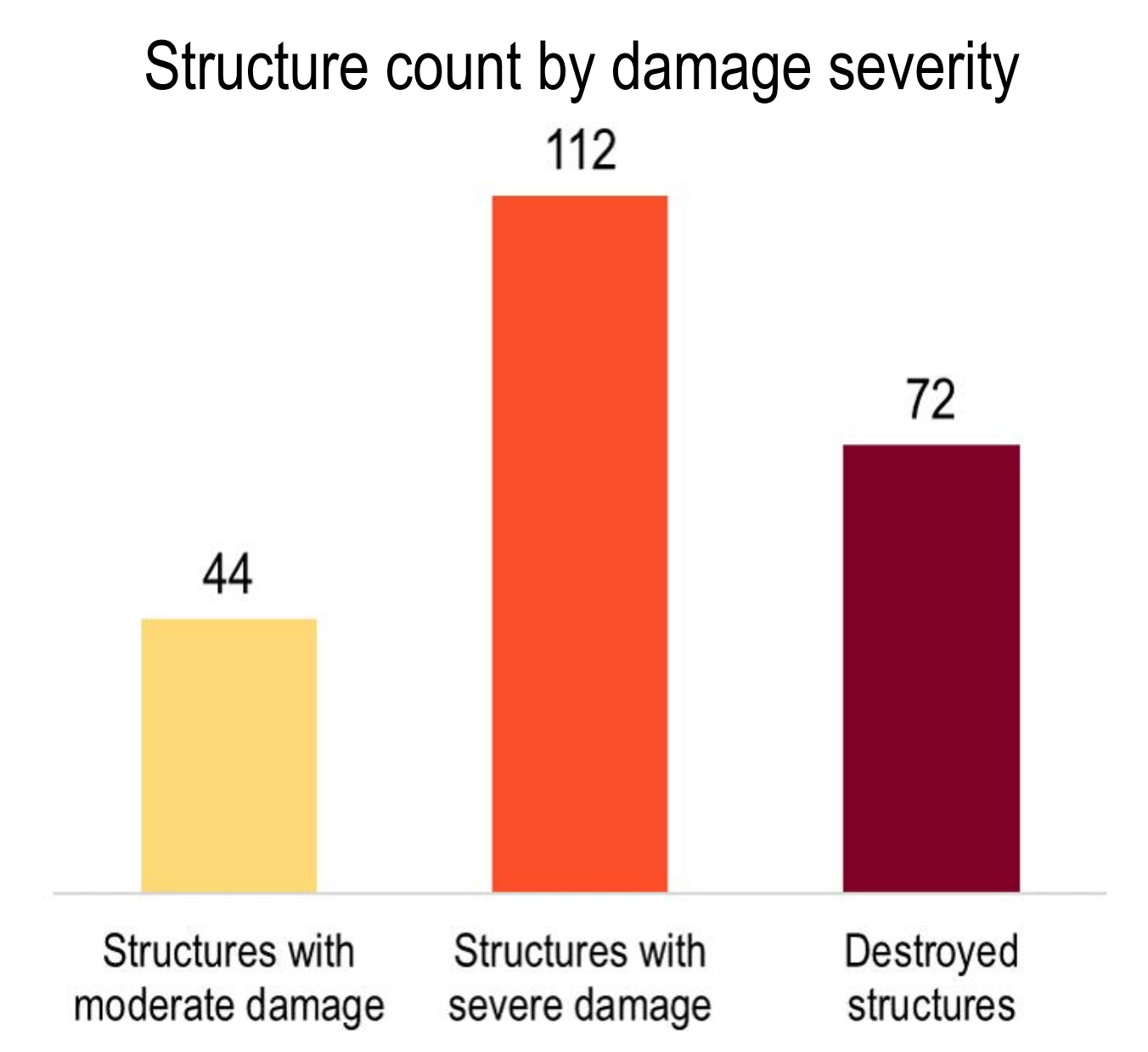


### Jisrein Summary

**27%** of Structures Damaged or Destroyed



**19,500 total population**  
of which 8,750 are IDPs

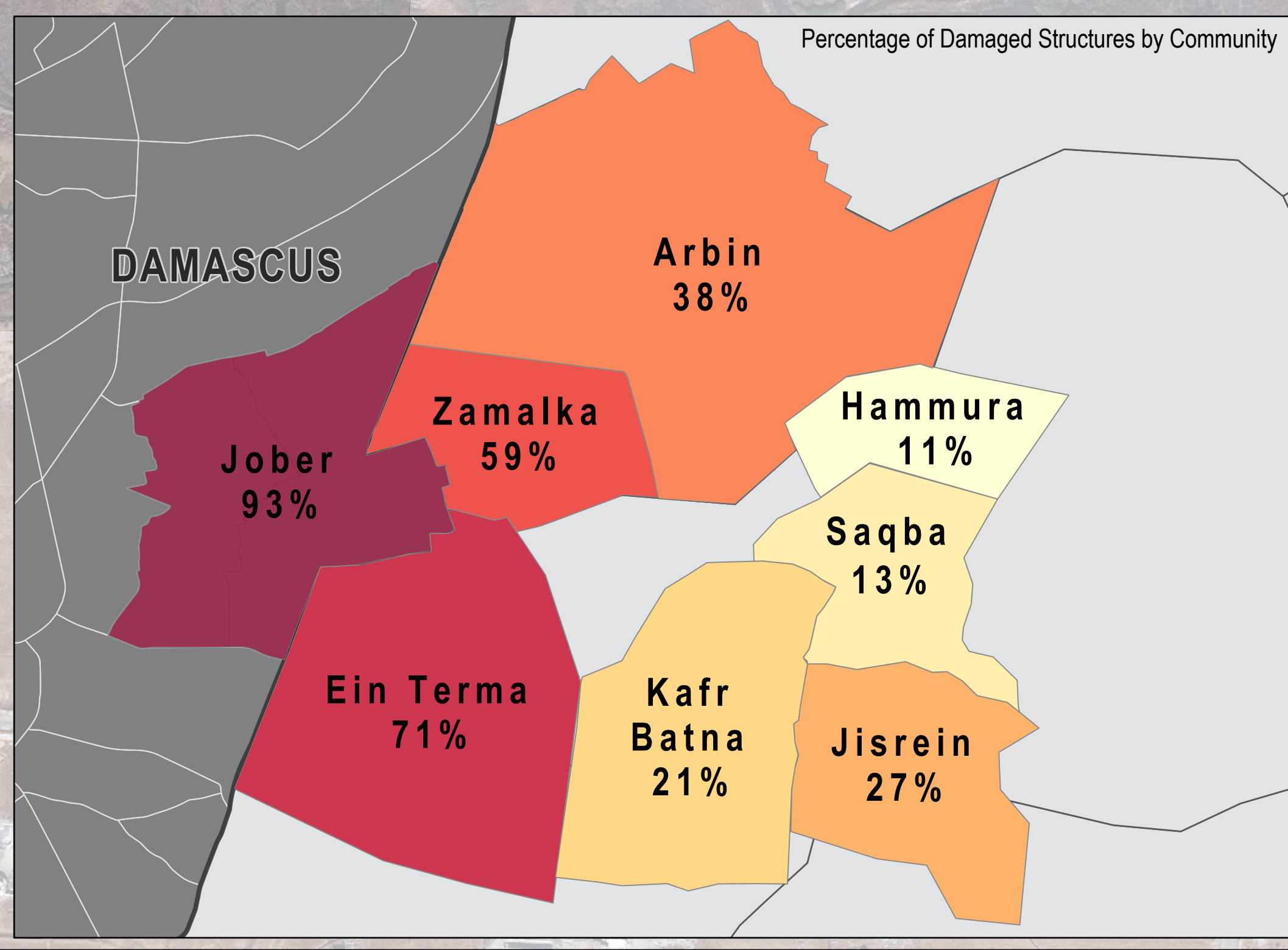
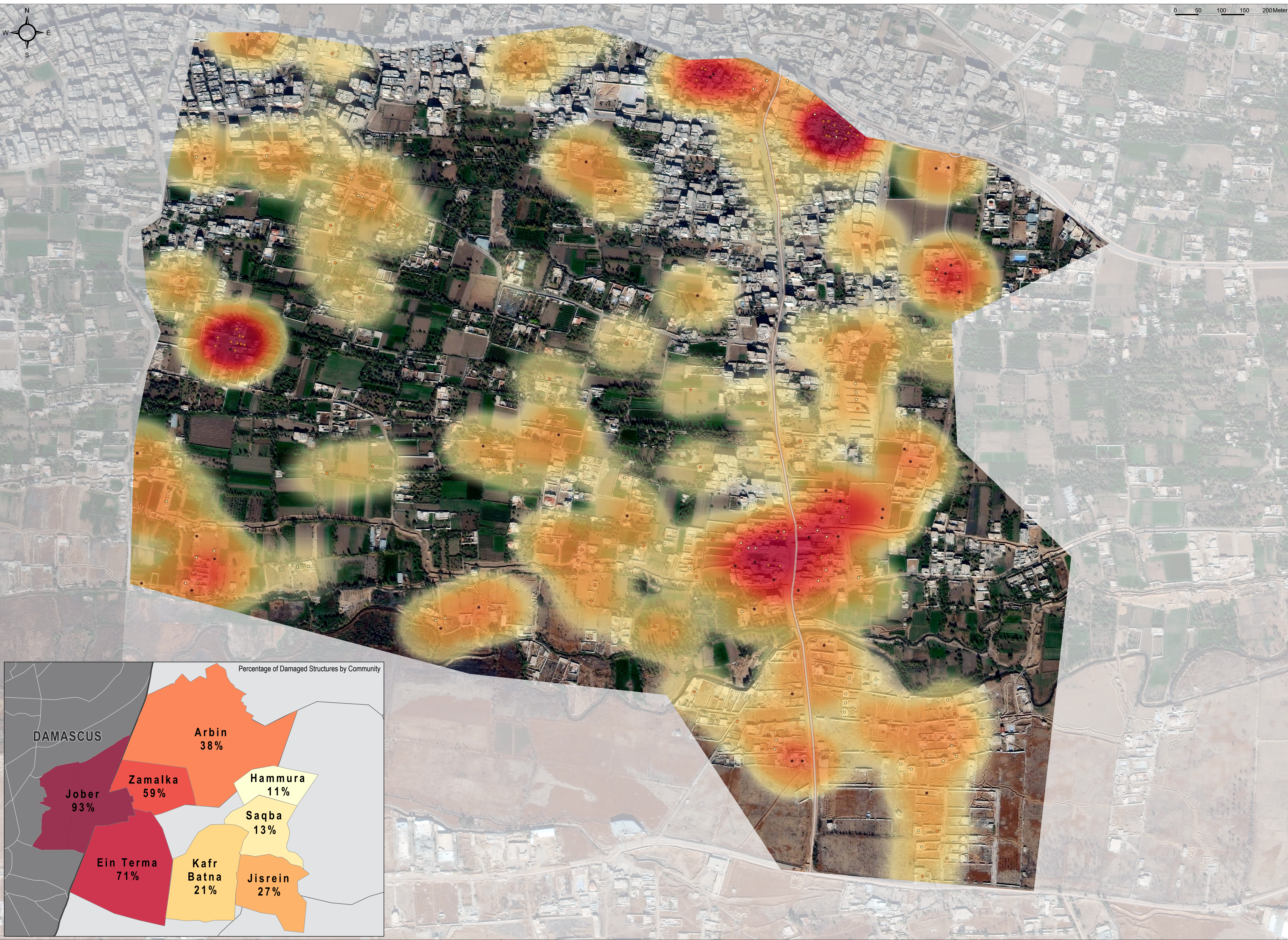
**25-49% of preconflict population displaced**  
from community

**51-75% of remaining population are female**

Jisrein is a community located in central Eastern Ghouta, an agricultural region east of Damascus that has been classified by the United Nations as besieged since 2013. Jisrein in comparison with other assessed Eastern Ghouta communities has witnessed less displacement of its population, and nearly half of its current population are IDPs. The community has functioning mobile clinics/field hospitals, informal emergency care points, and primary healthcare facilities. There are pre-conflict primary, secondary, and high schools in Jisrein, as well as informal schools since the conflict began, which are reportedly underground facilities set up to protect children and teaching staff from shelling. During the month of November 2017, schools in Jisrein and across Eastern Ghouta reportedly closed due to the risk of shelling and a school in Jisrein was struck according to Community Representatives, although official confirmation of this specific incident could not be obtained. Additionally, medical facilities across Syria have reportedly been struck in increasing frequency at the end of 2017, including some in Eastern Ghouta. The electricity network has remained unavailable in Jisrein since assessments of Eastern Ghouta began in June 2016, while the water network became unavailable in October; residents reportedly could no longer afford to purchase fuel needed to power water pumps after price increases.

Data source:  
The above data was collected by REACH Initiative in late December 2017 (or in previous assessed months when specified) using the Community Profiles methodology, in which information is gathered from Community Representatives (CRs) residing within assessed communities who have sector-specific knowledge. Findings were triangulated through secondary sources, including humanitarian reports, and news and social media monitoring.

<http://www.bbc.com/news/world-middle-east-42591334>  
<https://reliefweb.int/report/syrian-arab-republic/syria-flash-update-recent-events-4-january-2018>



### Damage Severity Density

**High**



**Low**

\* Severity calculated based on density of damaged infrastructure and weighted by scale of damaged based on; destroyed, severely damaged, or moderate damage.

### Structure Damage Class

- Destroyed
- Severe Damage
- Moderate Damage

Satellite Data (1): WorldView-3 from 03 December 2017  
Copyright: DigitalGlobe, Inc  
Source: US Department of State, Humanitarian Information Unit, NextView License  
Road Data: OpenStreetMap  
Admin Data: UN OCHA  
Analysis: UNITAR-UNOSAT  
Production: REACH Initiatives

Analysis Conducted comparing:  
Satellite Data (1): WorldView-3 from 03 December 2017  
Copyright: DigitalGlobe, Inc  
Source: US Department of State, Humanitarian Information Unit, NextView License

Satellite Data (2): WorldView-2 from 20 November 2017  
Copyright: DigitalGlobe, Inc  
Source: US Department of State, Humanitarian Information Unit, NextView License

Note: Data, designations and boundaries contained on this map are not warranted to be error-free and do not imply acceptance by the REACH partners, associates or donors mentioned on this map.