

# Torit Town WASH Infrastructure Mapping

## Torit County, Eastern Equatoria State

September 2019

### Overview

This profile provides an overview of the Water, Sanitation and Hygiene (WASH) infrastructure within Torit Town. As part of REACH's continued support for the WASH Cluster, REACH conducted a WASH infrastructure mapping exercise in Torit Town. By using satellite imagery the extent of the town was determined to be 18.2km<sup>2</sup>. This was subdivided into 0.06km<sup>2</sup> grids, creating a total of 294 square grids each with 250m side lengths. All grids were assigned to a team of 16 enumerators from INGOs, NGOs and government WASH partners in Torit to assess and map all the existing WASH infrastructure. To account for each square grid, a GPS point was collected in areas where no WASH infrastructure was observed. For grids that could not be physically assessed due to reasons like insecurity and terrain, participatory mapping was used to report on them.

Data collection took place between 8-15 of August 2019. Enumerators received training on the use of a navigational mobile phone application ([MapsMe](#)), which allowed them to locate their allocated grids, as well as a mobile data collection application (ODK collect) to record their data. They were also trained in conducting Hydrogen Sulphide water tests for bacterial contamination. 95% coverage was achieved with 281 grids out of 294 accounted for and a total of 332 WASH infrastructure were mapped. Below are the key findings of the assessment. Click [here](#) to access the Terms of Reference and data collection tools.

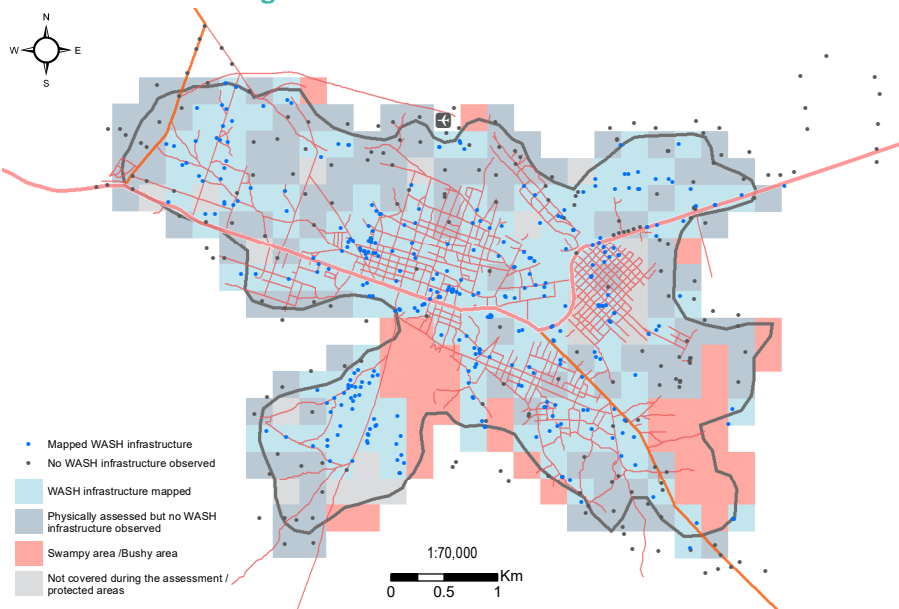
Estimated Torit town population **20,048<sup>1</sup>**

Torit town assessed area **18.2 km<sup>2</sup>**

Total assessed latrines **202**

Total assessed waterpoints **130**

### Assessment coverage



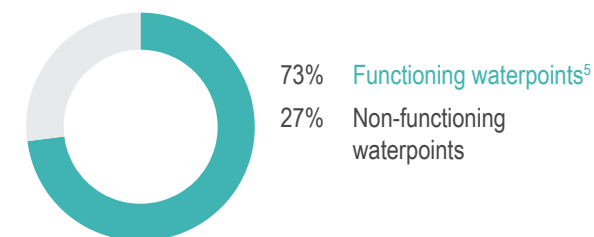
### Latrines by type

	# assessed	% assessed
Communal/institutional latrines <sup>2</sup>	47	23%
Family latrines <sup>3</sup>	142	70%
Shared latrines <sup>4</sup>	11	5%

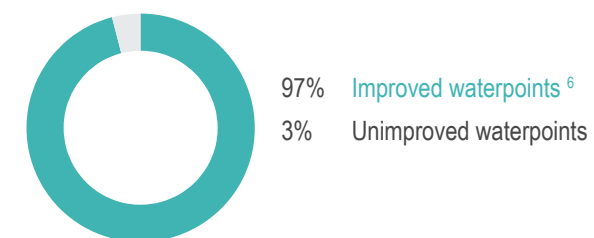
### Waterpoints by type

	# assessed	% assessed
Manual borehole	91	69%
Motorised borehole	10	8%
Stand Pipe	8	6%
Other	5	5%
Storage tank	7	5%
Piped system	5	3%
Unprotected Well	2	2%
Water Kiosk	2	2%

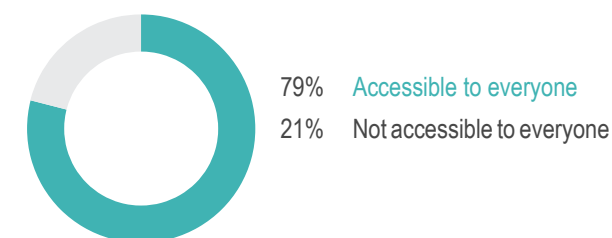
### Waterpoints functionality



### Waterpoint type



### Accessibility of communal and shared latrines





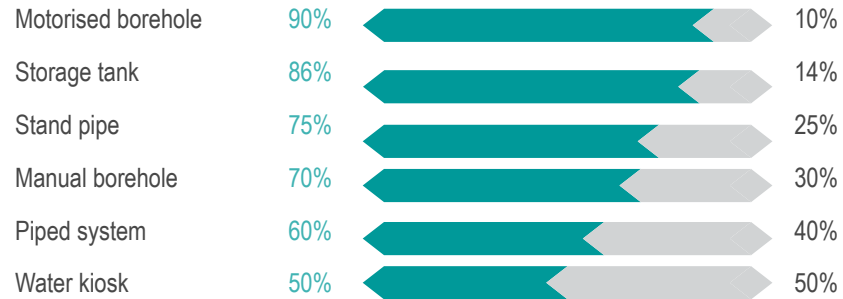
# Torit Town WASH Infrastructure Mapping

## Torit County, Eastern Equatoria State

September 2019

### Water access

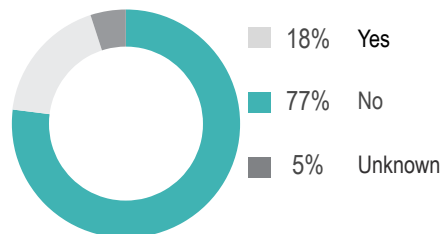
#### Protected waterpoints functionality by type



#### Protected waterpoints contamination results<sup>7</sup>

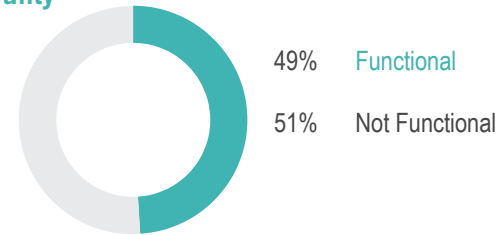


#### Waterpoints requiring payment

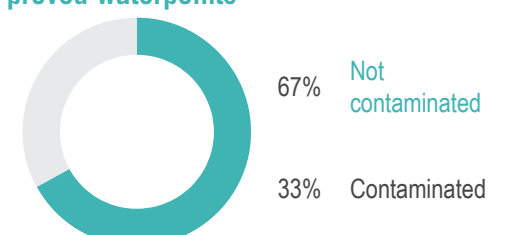


<b>Monthly</b>	Most common type of payment for water points requiring payment
<b>713<sup>8</sup> SSP</b>	Average cost associated with water points requiring payment
<b>5-5000 SSP</b>	Lowest to highest price paid for access to water points that require payment

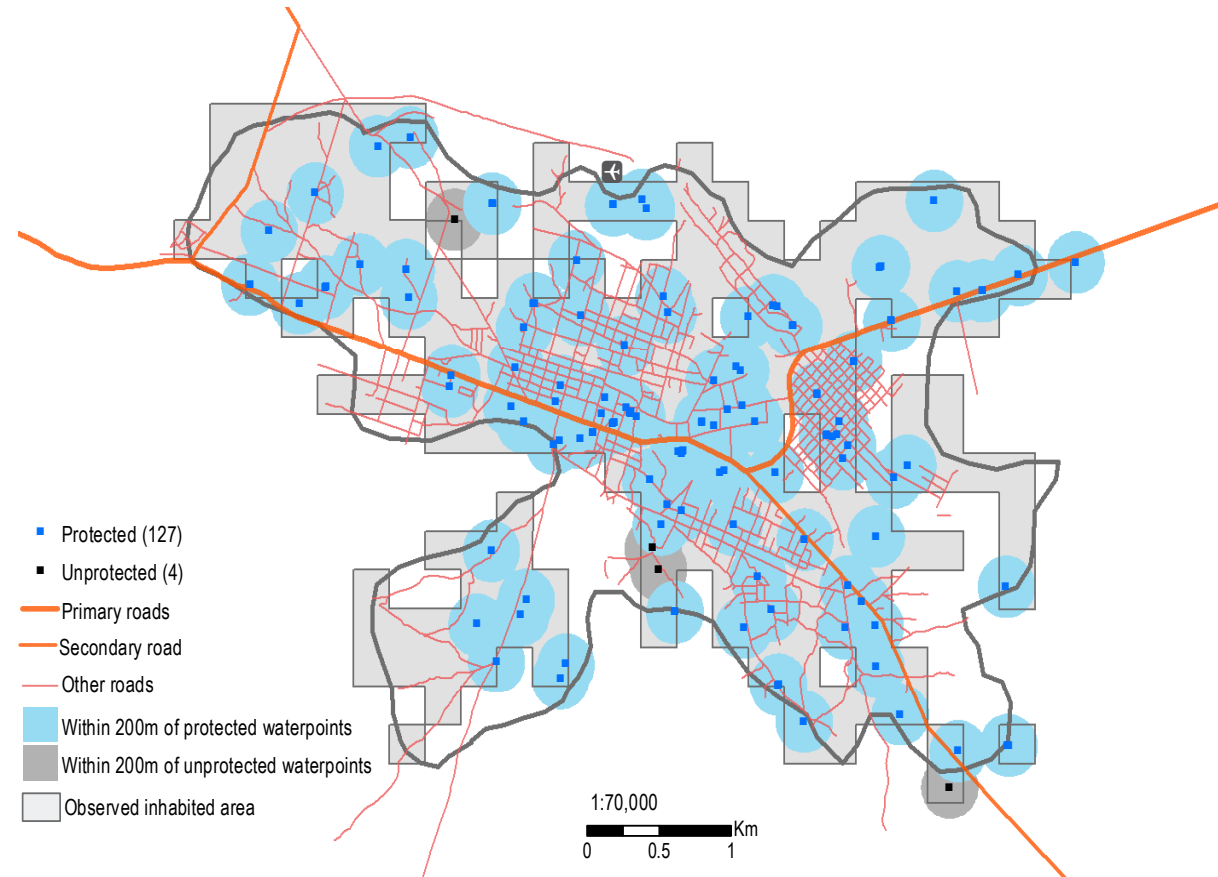
#### Community owned waterpoints, by functionality



#### Contamination results of functional improved waterpoints



#### Waterpoints by type and distance



- Protected (127)
- Unprotected (4)
- Primary roads
- Secondary road
- Other roads
- Within 200m of protected waterpoints
- Within 200m of unprotected waterpoints
- Observed inhabited area

1:70,000  
0 0.5 1 Km

# Torit Town WASH Infrastructure Mapping

## Torit County, Eastern Equatoria State

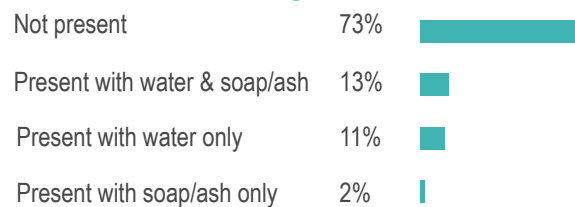
September 2019

### Sanitation access

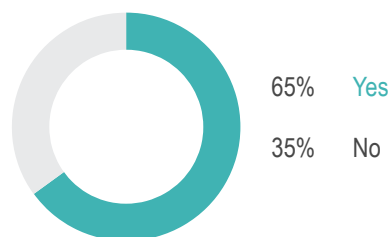
#### Latrines type, by improved or unimproved <sup>9</sup>



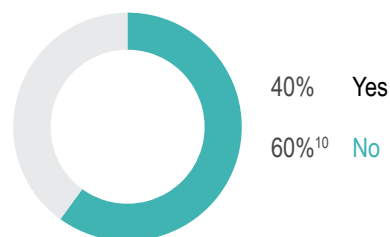
#### Functional handwashing stations at latrines



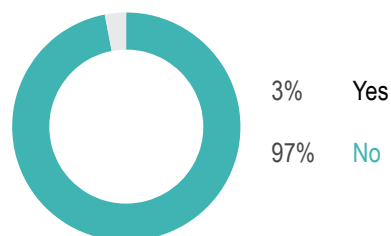
#### Latrines with lockable doors



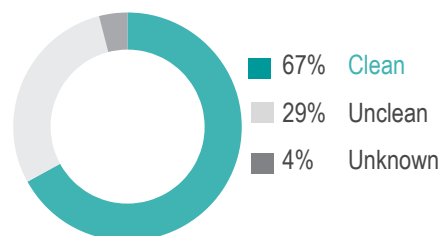
#### Latrines observed to have sludge level more than 50% full



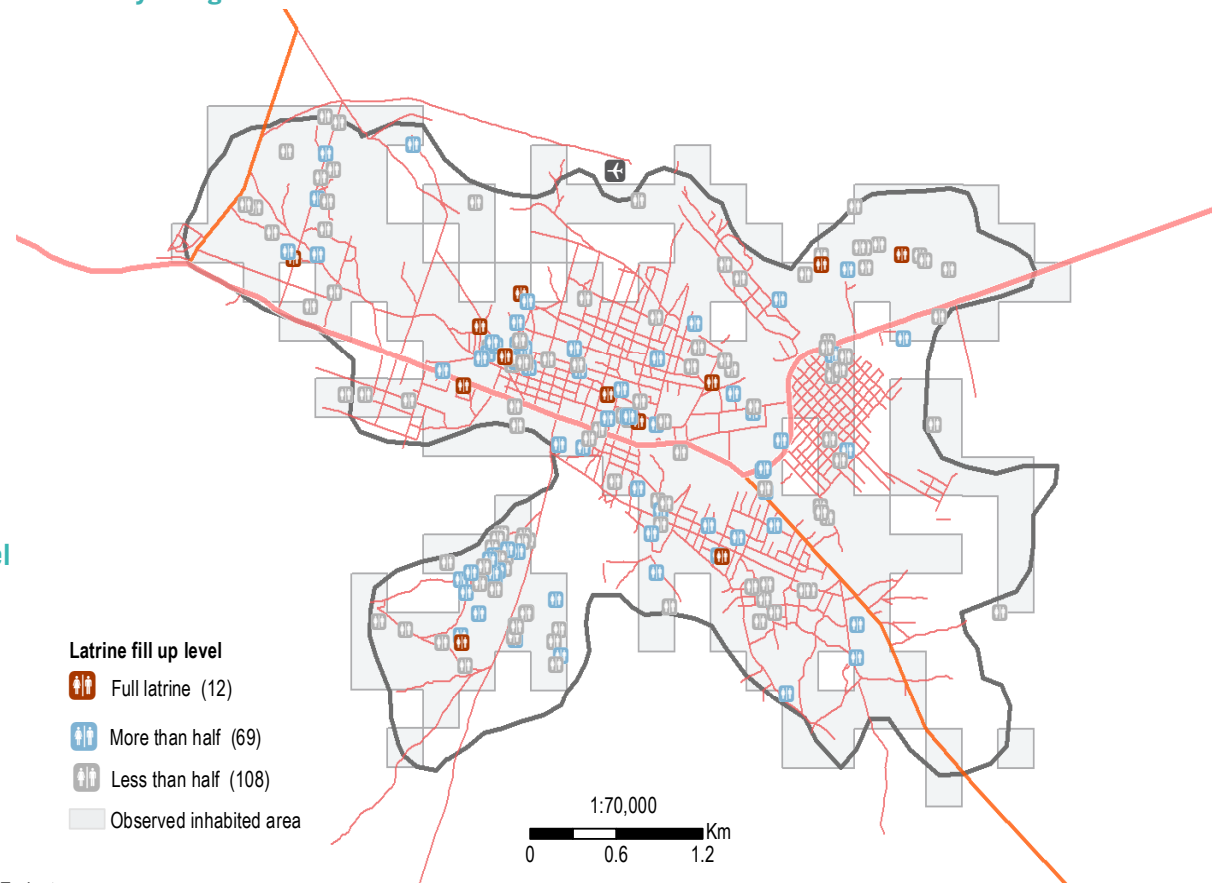
#### Latrines charging a fee



#### Latrines by cleanliness <sup>11</sup>



#### Latrines by sludge level



#### Endnotes

- <http://worldpopulationreview.com>
- A communal/institutional latrine refers to latrines found in public areas such as NGO compounds, schools, churches/mosques etc.
- A family latrines refer to latrines used by a particular household with full latrine ownership, construction and maintenance.
- Shared latrines refer to those used by a number of households, who are all responsible for care and maintenance.
- Functioning waterpoints are points at which water is readily available from the waterpoint.
- A protected/improved waterpoint includes: boreholes, protected wells, storage tanks, water kiosks and piped systems. Unprotected waterpoints are significantly more likely to be exposed to contaminants (animals, faeces, rainwater etc).
- Contamination was defined by a positive H<sub>2</sub>S test or a black change in color to the test once water was added.
- 1USD = 159 SSP for August 2019
- Improved refers to fully covered latrines (i.e. a latrine with a slab, four walls, a roof and a lockable door) that effectively prevent contact between humans and faeces.
- This is inclusive of latrines where it was unable to confirm the sludge level (5% of latrines assessed)
- A latrine was considered unclean when faeces were found on it.