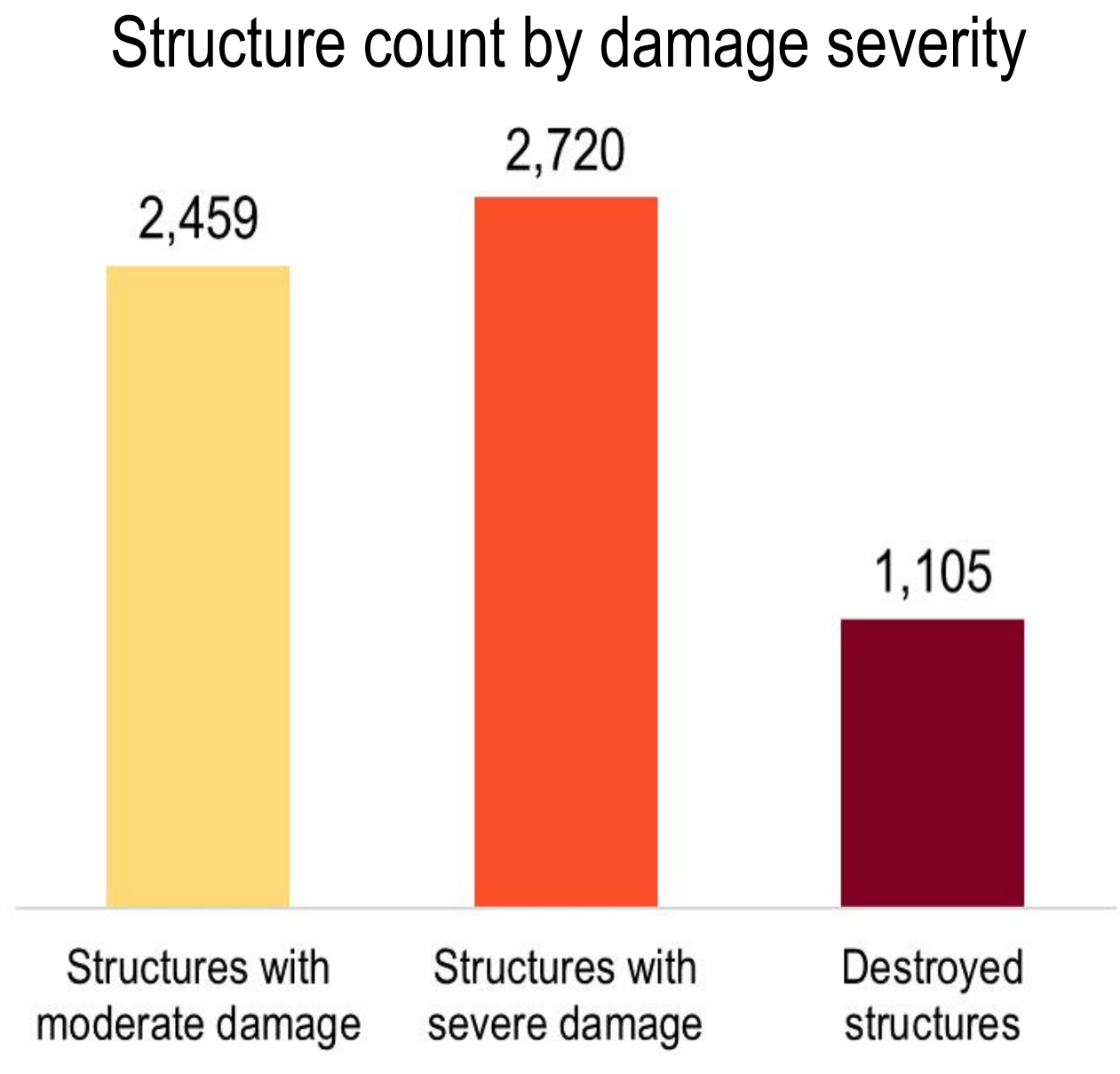


Jober Summary

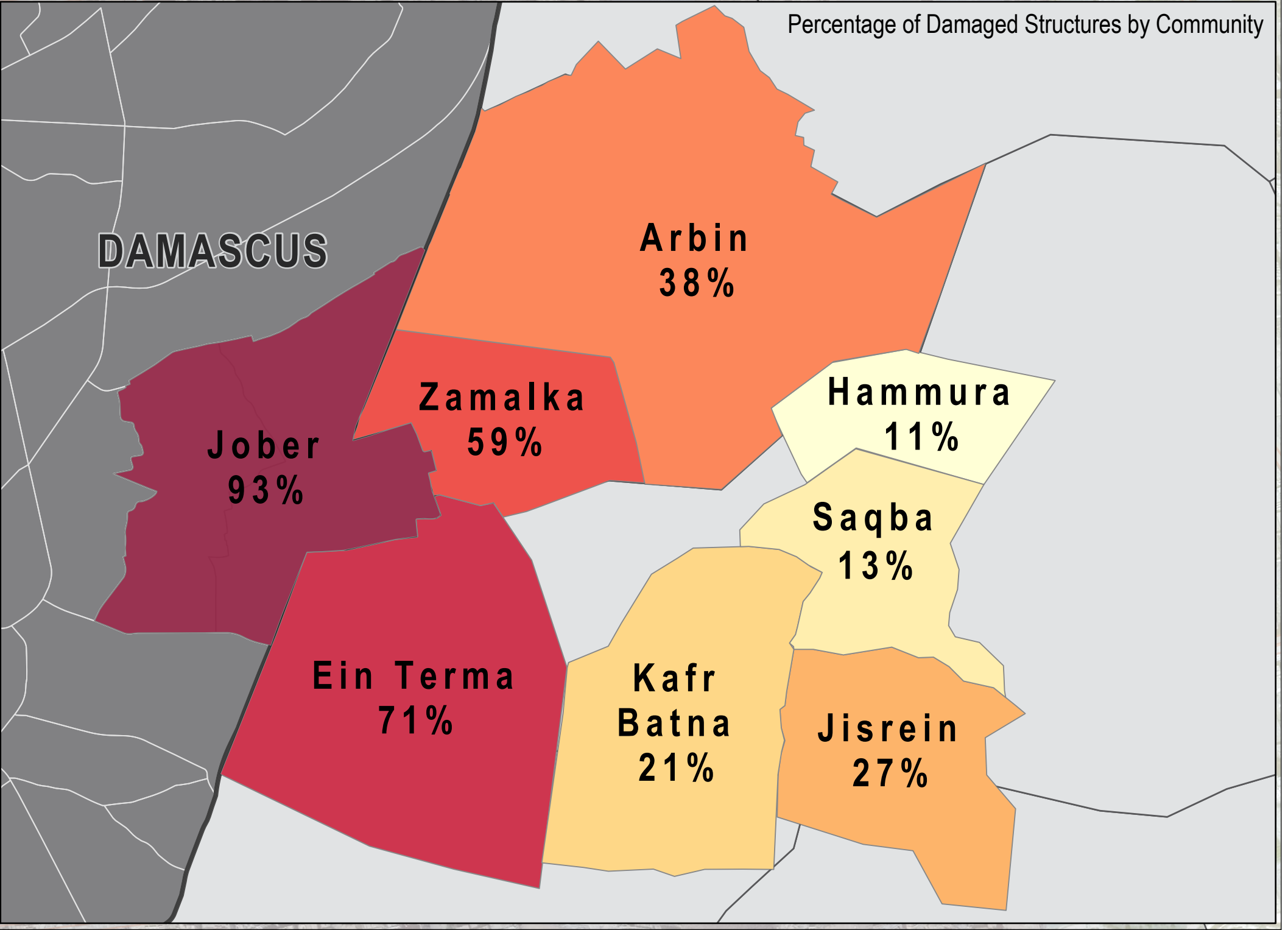
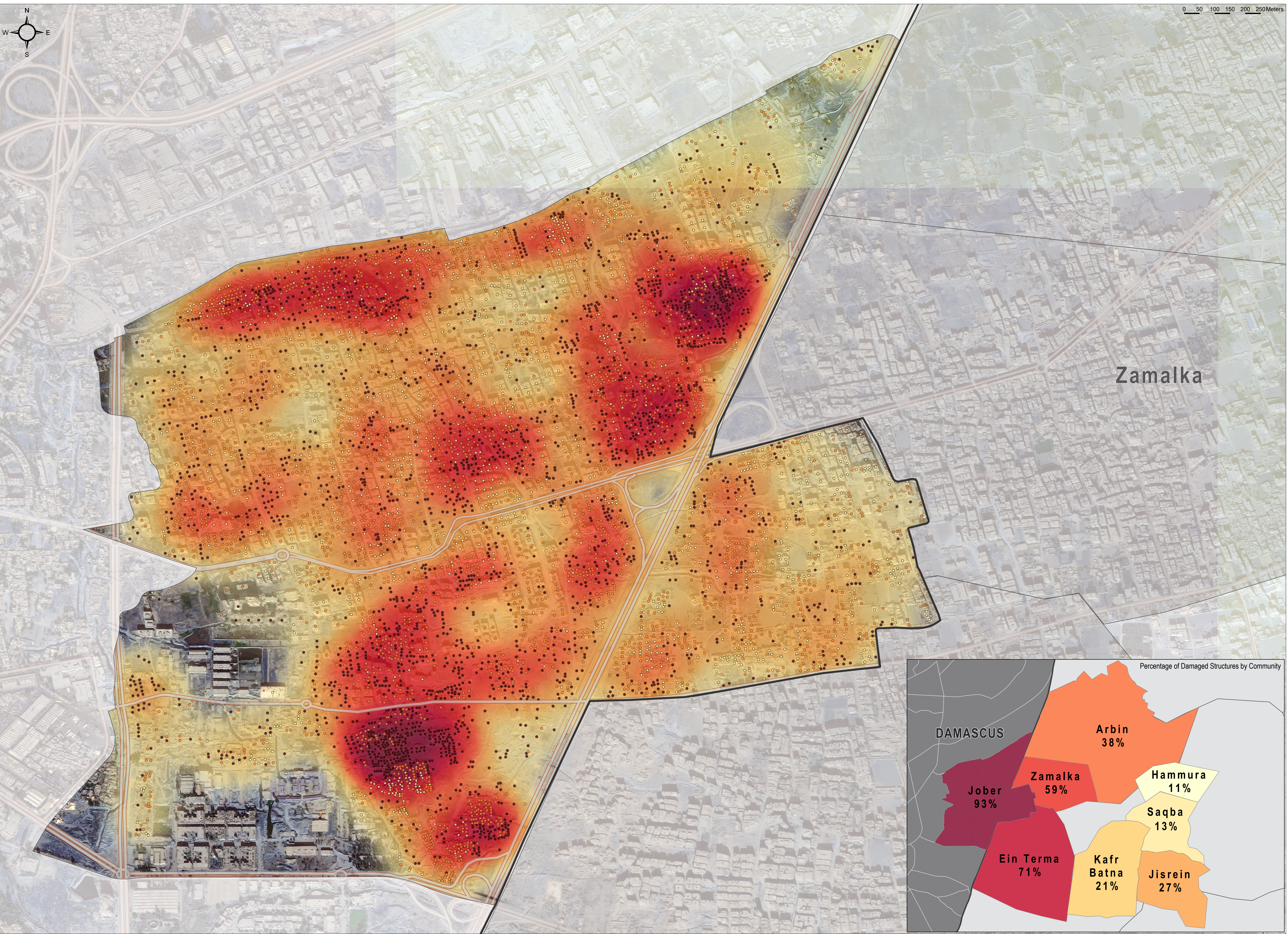
93% of Structures Damaged or Destroyed



-  **0 civilian population**
-  **Only armed groups remain**
-  **100% of preconflict population displaced from community**

Jober is a neighbourhood on the eastern boundaries of Damascus city that sits adjacent to Eastern Ghouta. It was re-classified from hard-to-reach (HTR) to besieged by the United Nations (UN) in November 2016. Of the areas assessed in the satellite analysis, Jober has, by far, sustained the most damage; it has been an active frontline for the majority of the assessment period. According to REACH data obtained by Community Representatives, the majority of Jober's population was displaced to Eastern Ghouta in March 2017 due to an escalation in conflict in the community. This resulted in the closure of all educational facilities in March, although primary schools did reportedly re-open for a month in May 2017 due to a lull in conflict and the temporary return of some families. However, all women and children left the neighbourhood again in June 2017. Meanwhile, the only medical facilities available since June 2016 until assessments stopped in August 2017 were informal emergency care points. Access to the water network ceased to be possible as of August 2017 due to heavy shelling, while the electricity network has reportedly been inaccessible since assessments began. REACH stopped assessing the community in August 2017 after it was determined that the civilian population had left the area and was unlikely to return due to the continuation of conflict.

Data source:
The above data was collected by REACH initiative in late December 2017 (or in previous assessed months when specified) using the Community Profiles methodology, in which information is gathered from Community Representatives (CRs) residing within assessed communities who have sector-specific knowledge. Findings were triangulated through secondary sources, including humanitarian reports, and news and social media monitoring.



Damage Severity Density




High



Low

* Severity calculated based on density of damaged infrastructure and weighted by scale of damaged based on; destroyed, severely damaged, or moderate damage.

Structure Damage Class

-  **Destroyed**
-  **Severe Damage**
-  **Moderate Damage**

Satellite Data (1): WorldView-3 from 03 December 2017
Copyright: DigitalGlobe, Inc
Source: US Department of State, Humanitarian Information Unit, NextView License
Road Data: OpenStreetMap
Admin Data: UN OCHA
Analysis: UNITAR-UNOSAT
Production: REACH Initiatives

Satellite Data (2): WorldView-2 from 20 November 2017
Copyright: DigitalGlobe, Inc
Source: US Department of State, Humanitarian Information Unit, NextView License

Note: Data, designations and boundaries contained on this map are not warranted to be error-free and do not imply acceptance by the REACH partners, associates or donors mentioned on this map.