

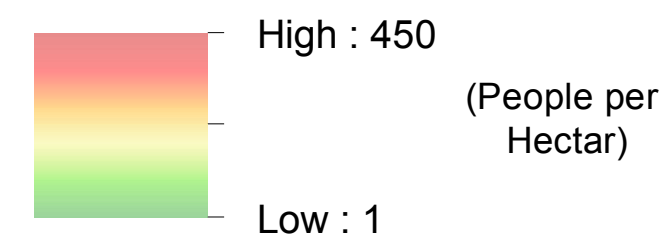


IRAQ - Ninewa Governorate - Gawilan Camp

Population Density - June 2015

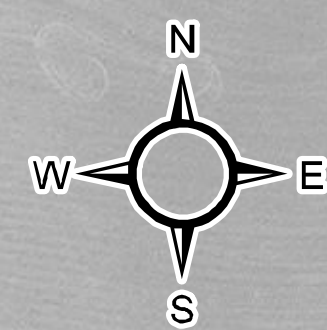
For Humanitarian Purposes Only
Production date : 9 August 2015

Population Density



Camp Infrastructure

- Delineation
- Unoccupied Area
- Office / Facility
- Under Construction
- Entrance
- Office
- Bakery
- Mosque
- Wash Centre
- Borehole

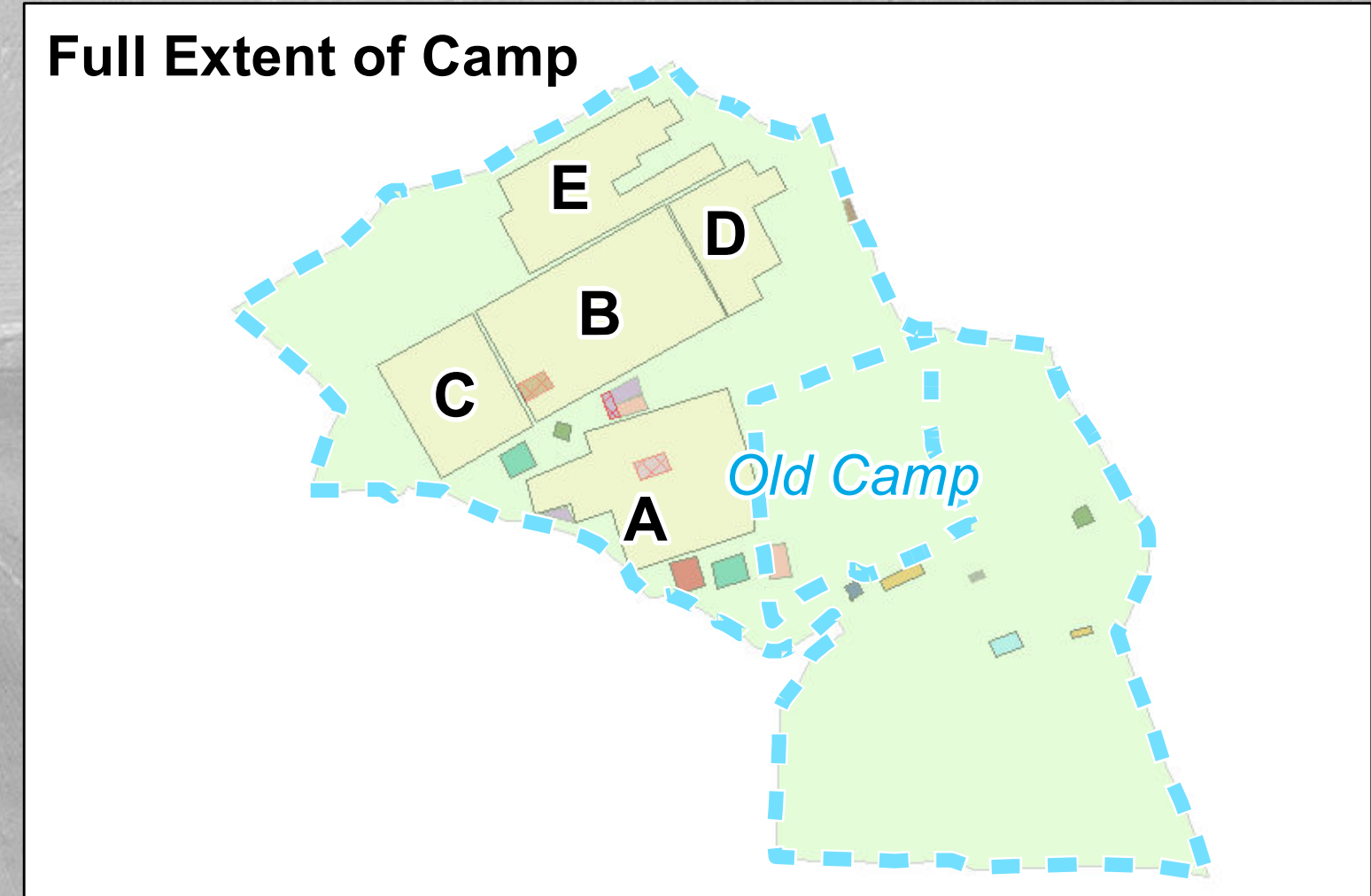


GPS Coordinates of camp location:
Longitude: 43° 36' 28.235" E (43.607843)
Latitude: 36° 20' 24.873" N (36.340243)

Thematic Data: 17 June 2015 - REACH
Administrative boundaries: GADM
Background imagery: 14/12/2014 DigitalGlobe
Projection: WGS 1984 UTM Zone 38N

Contact : iraq@reach-initiative.org
File: IRQ_Map_Gawilan_CampSweepIndicators_17Jun2015

Note: Data, designations and boundaries contained on this map are not warranted to be error-free and do not imply acceptance by the REACH partners, associates or donors mentioned on this map.



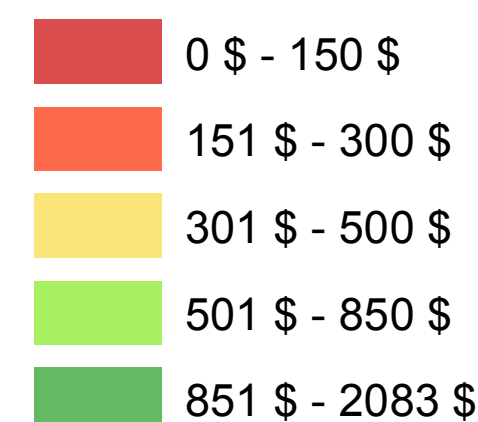


IRAQ - Ninewa Governorate - Gawilan Camp

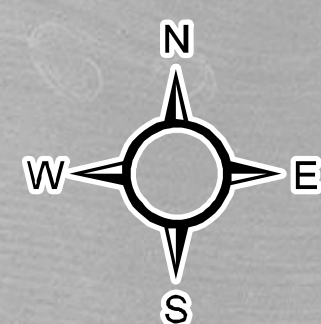
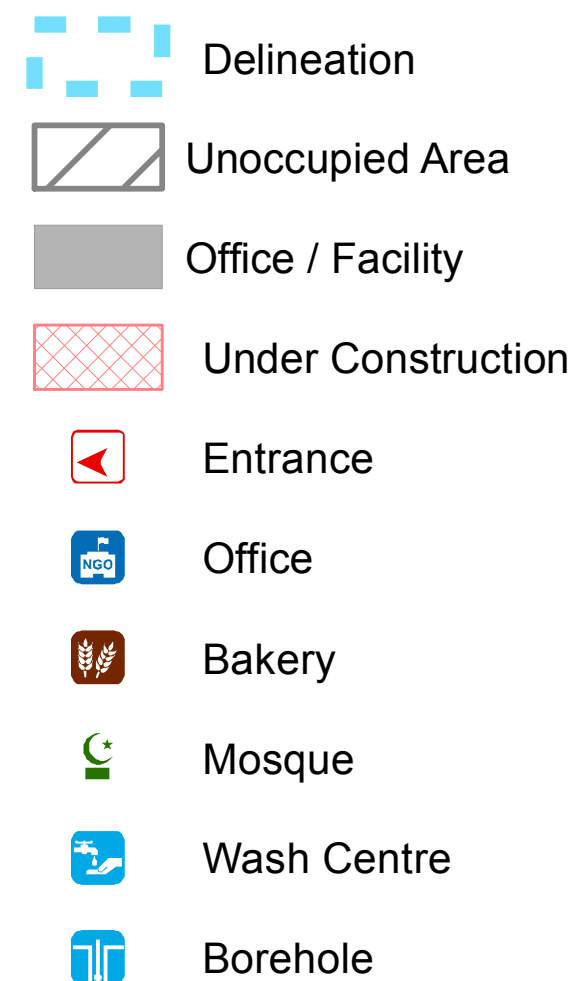
Monthly Income - June 2015

For Humanitarian Purposes Only
Production date : 9 August 2015

Monthly Income in USD



Camp Infrastructure



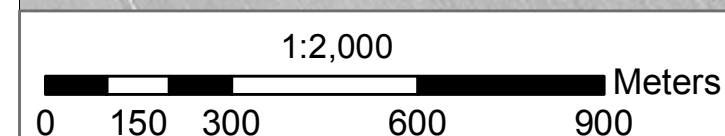
GPS Coordinates of camp location:
Longitude: 43° 36' 28.235" E
(43.607843)
Latitude: 36° 20' 24.873" N
(36.340243)

Note:
Polygons representing households are generated by the ArcToolbox tool 'Create Thiessen Polygons' using the location recorded at each assessment. The polygons created are a spatial representation of the household area not a defined boundary of a household.

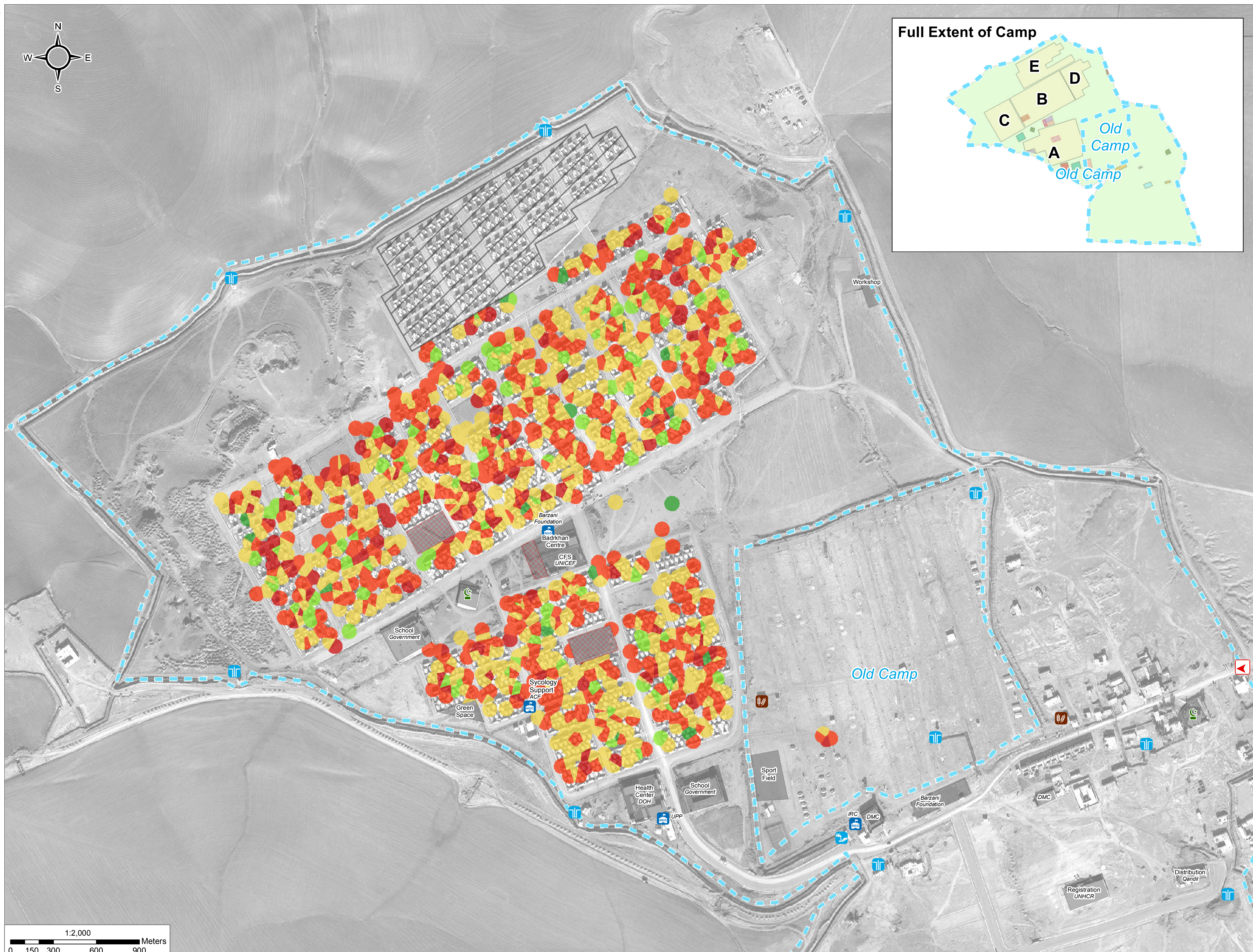
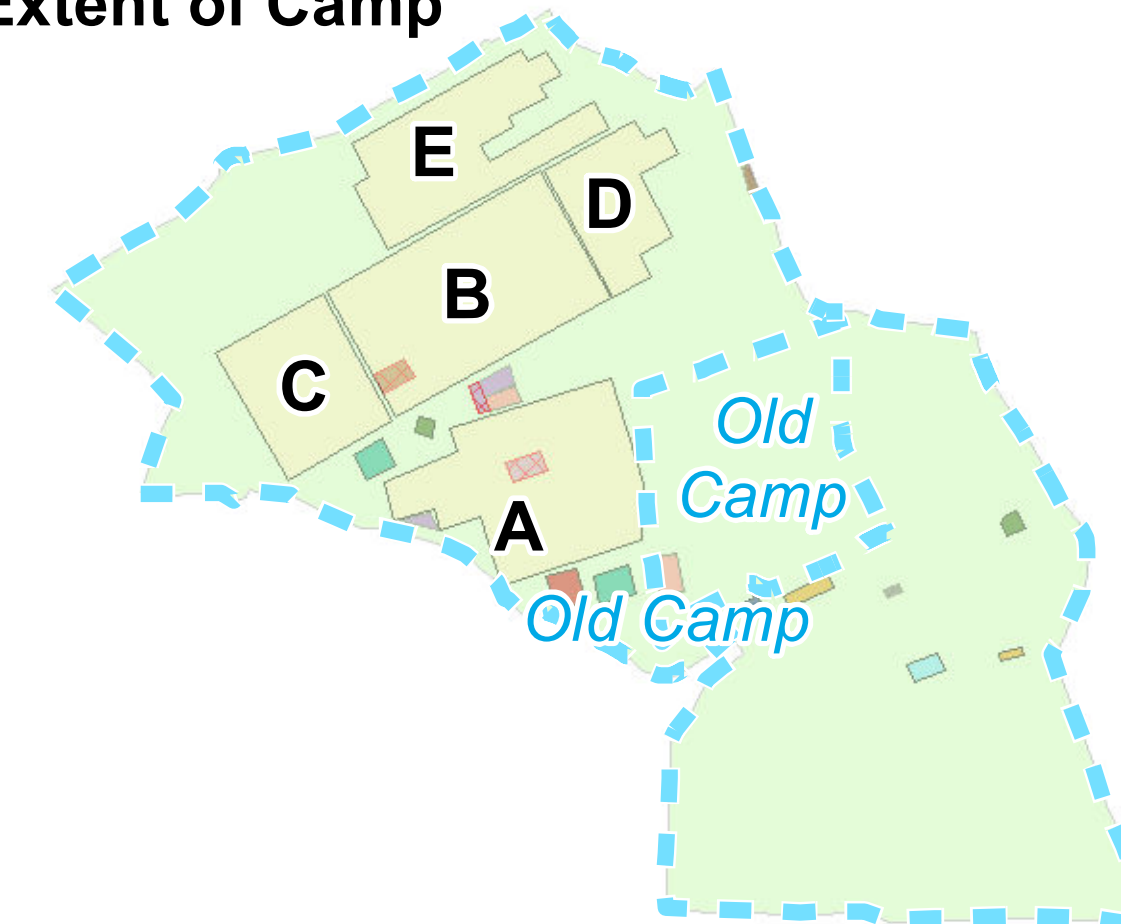
Data Sources:
Thematic Data: 17 June 2015 - REACH
Administrative boundaries: GADM
Background imagery: 14/12/2014 DigitalGlobe
Projection: WGS 1984 UTM Zone 38N

Contact : iraq@reach-initiative.org
File: IRQ_Map_Gawilan_CampSweepIndicators_17Jun2015

Note: Data, designations and boundaries contained on this map are not warranted to be error-free and do not imply acceptance by the REACH partners, associates or donors mentioned on this map.



Full Extent of Camp





IRAQ - Ninewa Governorate - Gawilan Camp

Shelter Types - June 2015

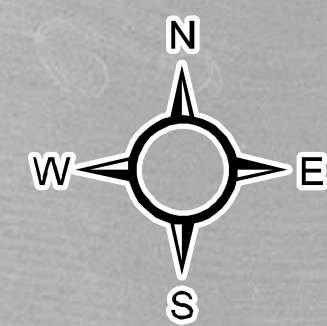
For Humanitarian Purposes Only
Production date : 9 August 2015

Shelter Type

- Permanent Shelter
- Tent With Block
- Tent Without Block

Camp Infrastructure

- Delineation
- Unoccupied Area
- Office / Facility
- Under Construction
- Entrance
- Office
- Bakery
- Mosque
- Wash Centre
- Borehole



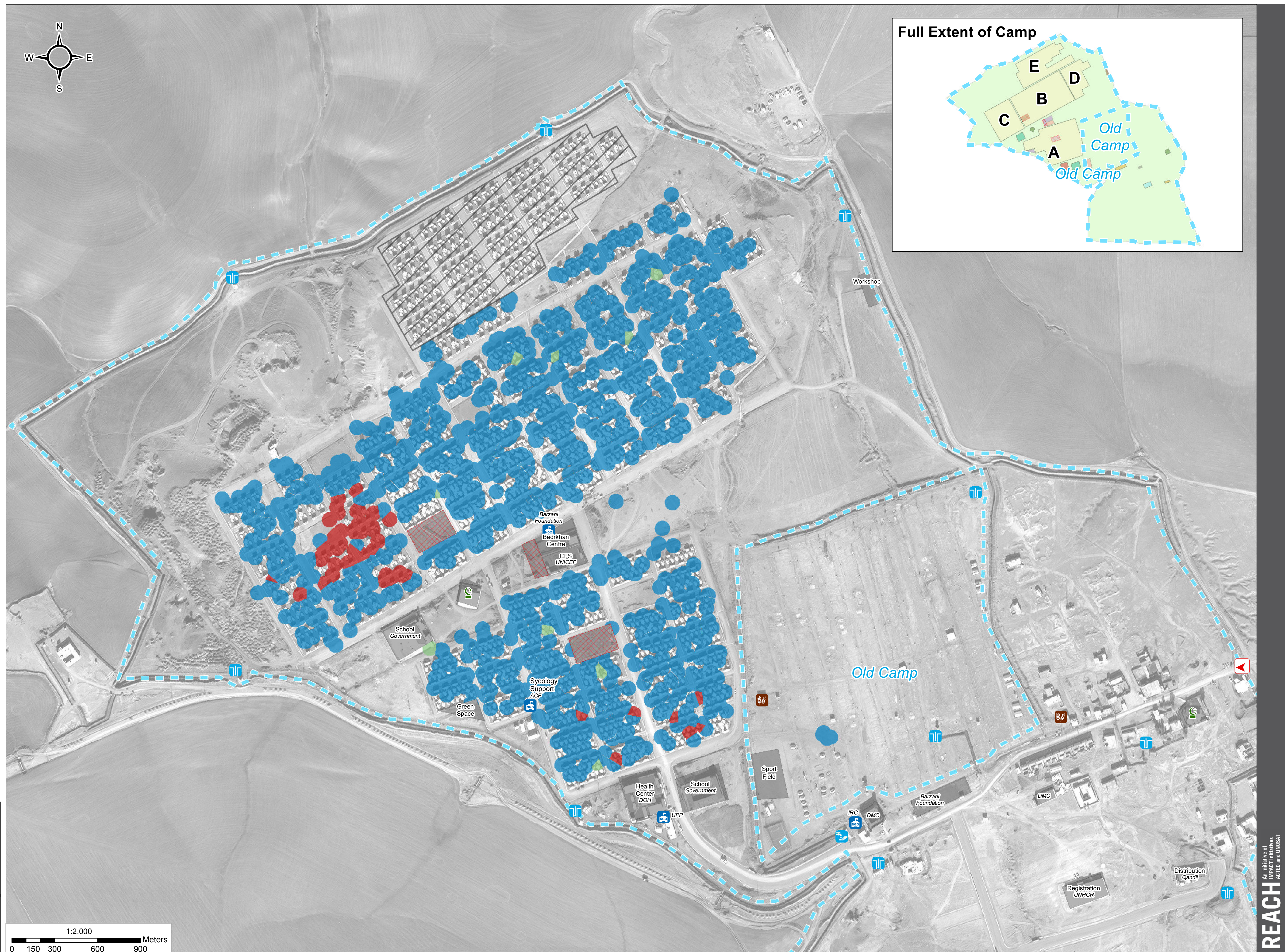
GPS Coordinates of camp location:
Longitude: 43° 36' 28.235" E (43.607843)
Latitude: 36° 20' 24.873" N (36.340243)

Note:
Polygons representing households are generated by the ArcToolbox tool 'Create Thiessen Polygons' using the location recorded at each assessment. The polygons created are a spatial representation of the household area not a defined boundary of a household.

Data Sources:
Thematic Data: 17 June 2015 - REACH
Administrative boundaries: GADM
Background imagery: 14/12/2014 DigitalGlobe
Projection: WGS 1984 UTM Zone 38N

Contact : iraq@reach-initiative.org
File: IRQ_Map_Gawilan_CampSweepIndicators_17Jun2015

Note: Data, designations and boundaries contained on this map are not warranted to be error-free and do not imply acceptance by the REACH partners, associates or donors mentioned on this map.





IRAQ - Ninewa Governorate - Gawilan Camp

Primary Livelihood - June 2015

For Humanitarian Purposes Only
Production date : 9 August 2015

Primary Livelihood

- Cash Remittances
- Food Assistance
- Humanitarian Assistance
- Low Skill Service
- No Livelihood
- Renting Property
- Retail Trade
- Skilled Service Labour
- Trade Vocation

Camp Infrastructure

- Delineation
- Unoccupied Area
- Office / Facility
- Under Construction
- Entrance
- Office
- Bakery
- Mosque
- Wash Centre
- Borehole

Note:
Polygons representing households are generated by the ArcToolbox tool 'Create Thiessen Polygons' using the location recorded at each assessment. The polygons created are a spatial representation of the household area not a defined boundary of a household.

Data Sources:
Thematic Data: 17 June 2015 - REACH
Administrative boundaries: GADM
Background imagery: 14/12/2014 DigitalGlobe
Projection: WGS 1984 UTM Zone 38N

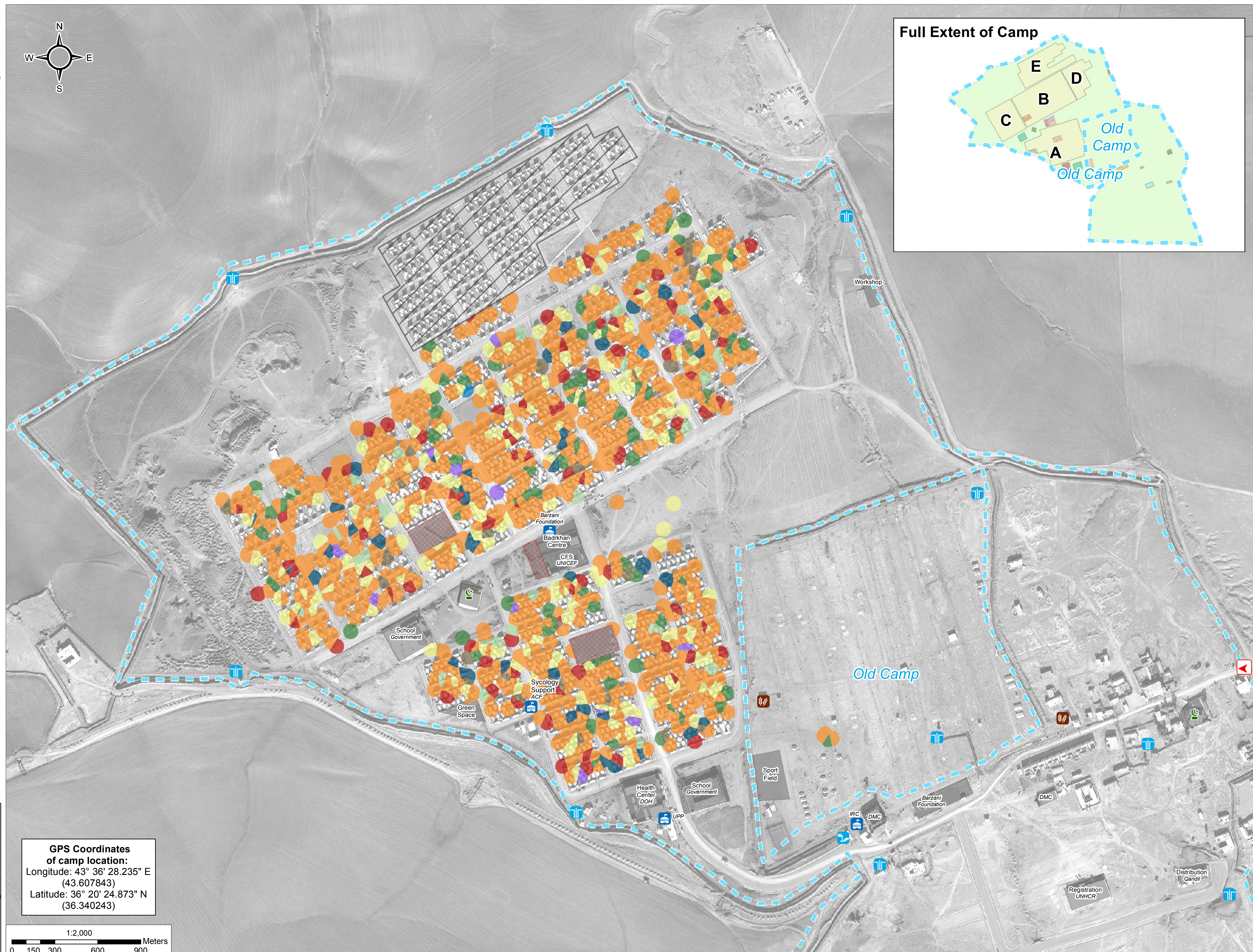
Contact : iraq@reach-initiative.org
File: IRQ_Map_Gawilan_CampSweepIndicators_17Jun2015

Note: Data, designations and boundaries contained on this map are not warranted to be error-free and do not imply acceptance by the REACH partners, associates or donors mentioned on this map.



GPS Coordinates of camp location:
Longitude: 43° 36' 28.235" E (43.607843)
Latitude: 36° 20' 24.873" N (36.340243)

1:2,000
0 150 300 600 900 Meters





IRAQ - Ninewa Governorate - Gawilan Camp

Food Security - June 2015

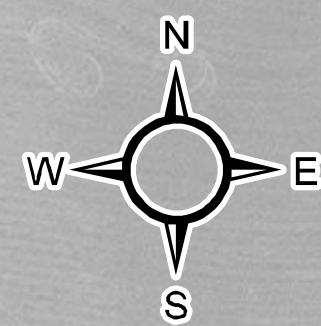
For Humanitarian Purposes Only
Production date : 9 August 2015

Food Security

- Food Secure
- Marginally Food Secure
- Moderately Food Insecure
- Severely Food Insecure

Camp Infrastructure

- Delineation
- Unoccupied Area
- Office / Facility
- Under Construction
- Entrance
- Office
- Bakery
- Mosque
- Wash Centre
- Borehole



GPS Coordinates of camp location:
Longitude: 43° 36' 28.235" E (43.607843)
Latitude: 36° 20' 24.873" N (36.340243)

Note:
Polygons representing households are generated by the ArcToolbox tool 'Create Thiessen Polygons' using the location recorded at each assessment. The polygons created are a spatial representation of the household area not a defined boundary of a household.

Data Sources:
Thematic Data: 17 June 2015 - REACH
Administrative boundaries: GADM
Background imagery: 14/12/2014 DigitalGlobe
Projection: WGS 1984 UTM Zone 38N

Contact : iraq@reach-initiative.org
File: IRQ_Map_Gawilan_CampSweepIndicators_17Jun2015

Note: Data, designations and boundaries contained on this map are not warranted to be error-free and do not imply acceptance by the REACH partners, associates or donors mentioned on this map.

