

Bossaso IDP Settlements Profile

Bossaso District, Bari Region, Somalia

Somalia Displacement Crisis
May 2017

Summary

This factsheet provides an overview of humanitarian needs in IDP settlements in Bossaso. The findings presented here are part of an assessment with the objective to support multi-sectoral and area-based approaches to intervention in IDP settlements in Somalia.

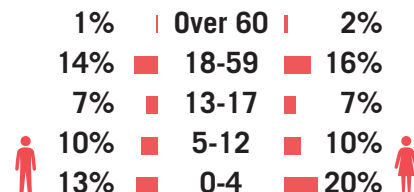
Primary data was collected through household surveys, key informant interviews and facility mapping from 31 May to 16 June 2017. Households were randomly sampled to a 95% confidence and 10% margin of error. Population figures were provided through settlement key informant interviews.

609 households and 7 key informants were interviewed in Bossaso.

Overview

Estimated Population: 22,721
Estimated Number of HHs: 3,594
Number of Settlements: 7

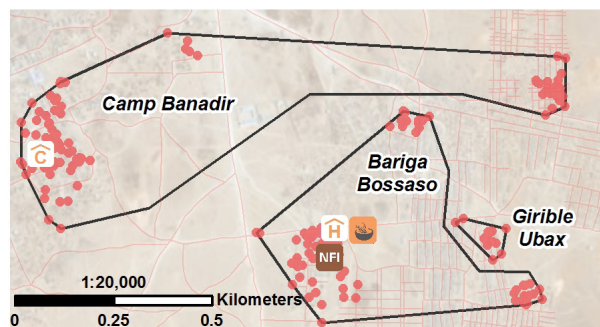
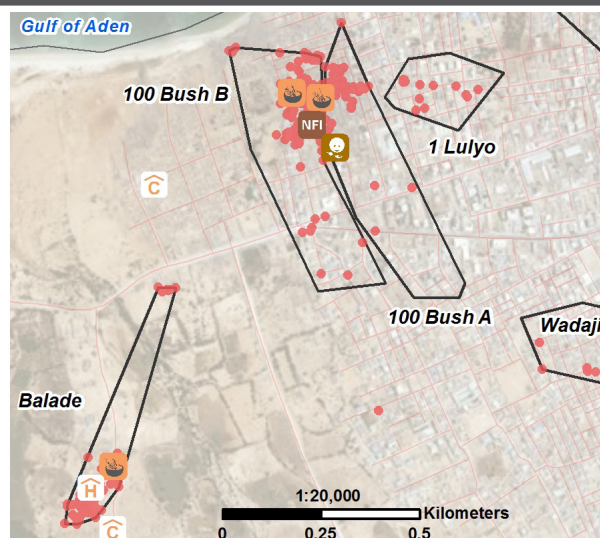
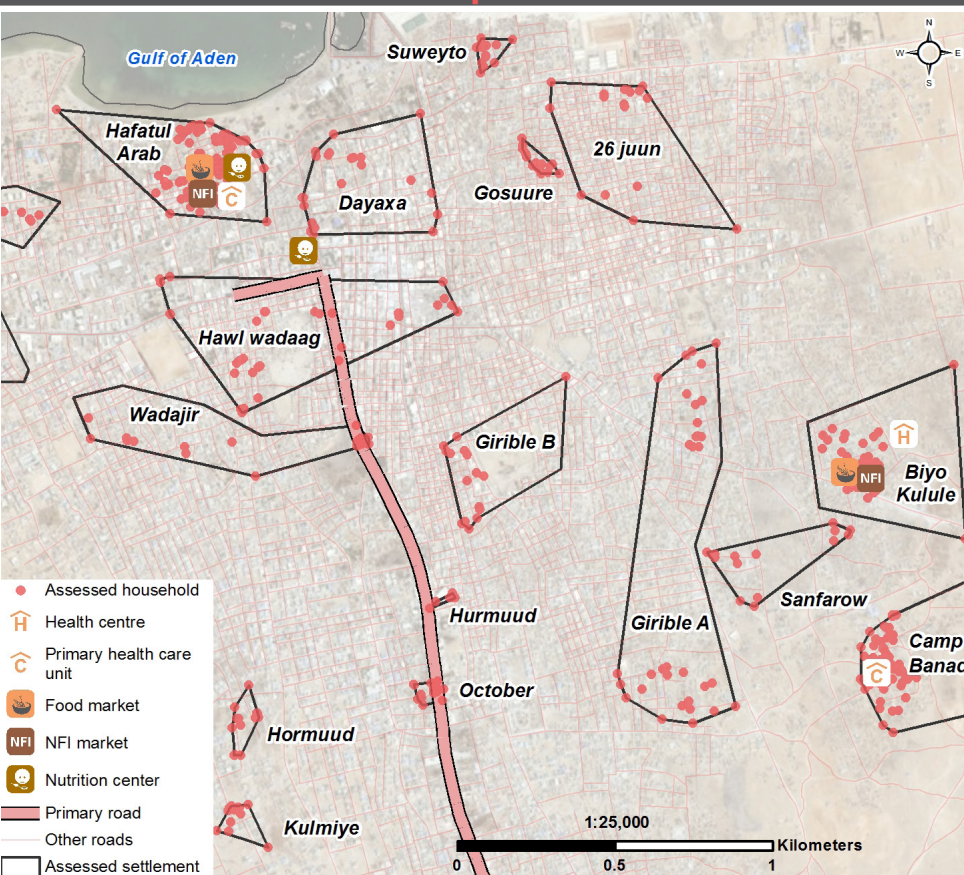
Demographics



Location Map



Bossaso Settlement Map



Sectoral Overview

		Target	Current Situation	
Education	% of children aged 5-12 that attend school	100%	29%	●
	% of children aged 13-17 that attend school	100%	22%	●
	% of schools that meet minimum teacher to student criteria of 1 teacher to every 45 students	100%	50%	●
Food	% of HHs reporting an acceptable food consumption score	100%	21%	●
	% of HHs that received food assistance in the past 3 months	100%	6%	●
Shelter/NFIs	% of HHs reporting any damage to shelter	0%	64%	●
Health	% of HHs that are able to access health facilities on site or within walking distance	100%	100%	●
Water & Sanitation	% of HHs within 500m of a potable water point	100%	81%	●
	% of HHs within 50m of a functioning latrine	100%	29%	●
Protection	% of HHs that have reported to be registered by a legitimate agency	100%	37%	●
	% of HHs with land tenure rights / arrangements	100%	36%	●

1) Targets are based on minimum Sphere or UNHCR standards. ● Target reached, ● Target more than 50% reached, ● Target less than 50% or not at all reached.



Funded by
European Union
Humanitarian Aid

For more information on this profile please contact:
REACH Initiative: somalia@reach-initiative.org
<http://www.reachresourcecentre.info/countries/somalia>

REACH Informing
more effective
humanitarian action

Displacement

% of population profile	%	# of HHs
IDP	71%	433
Host community	14%	82
Refugee	11%	68
Returnee	4%	26

Primary pull factors for arriving in location:¹

IDP's		
1	No conflict	70%
2	Availability of work	49%
3	Freedom of movement	13%
Refugees		
1	No conflict	81%
2	Availability of work	31%
3	Freedom of movement	26%

Primary push factors for leaving area of origin:¹

IDP's		
1	Conflict in the community	70%
2	Drought	49%
3	Lack of livelihood	13%
Refugees		
1	Conflict in the community	81%
2	Fear of conflict	31%
3	Lack of livelihood	26%

Data on push and pull factors for returnee populations is not presented due to the small representation in the settlement.

Relationship with the host communities:²

Very good	61%
Good	30%
Fair	8%
Bad	1%

Shelter

% of reported shelter types:

Buul	66%
CGI sheeting	33%
Tent	1%

% of reported shelter categories:

Temporary	44%
Emergency	32%
Permanent	17%
Semi-permanent	7%

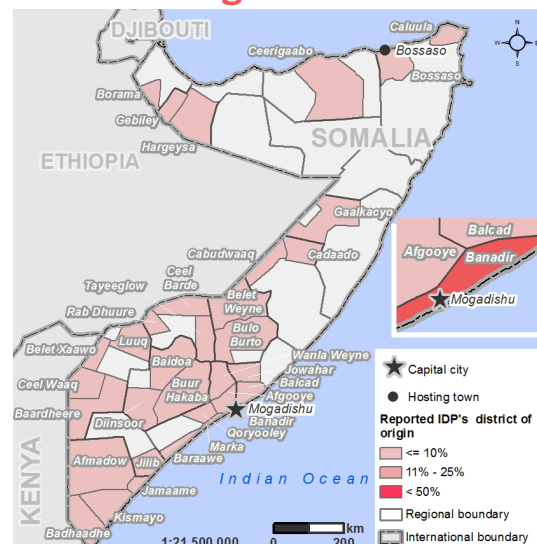
% of reported shelter materials:

Floor:	Earth	77%
Main structure:	Wood	57%
Wall & roof:	Iron sheet	47%

Note:

- 1) Households could choose multiple answers.
- 2) As reported by IDP households.

Areas of Origin

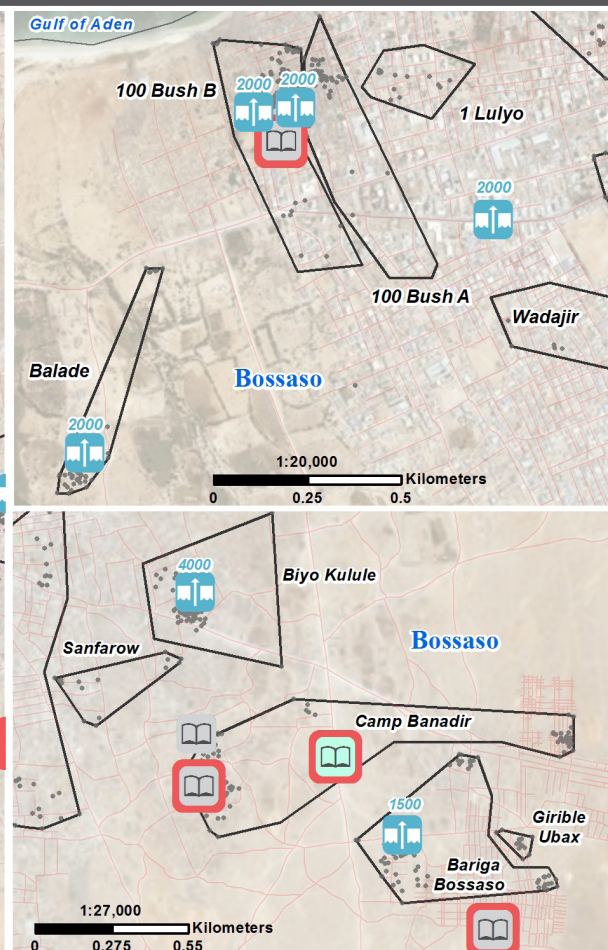
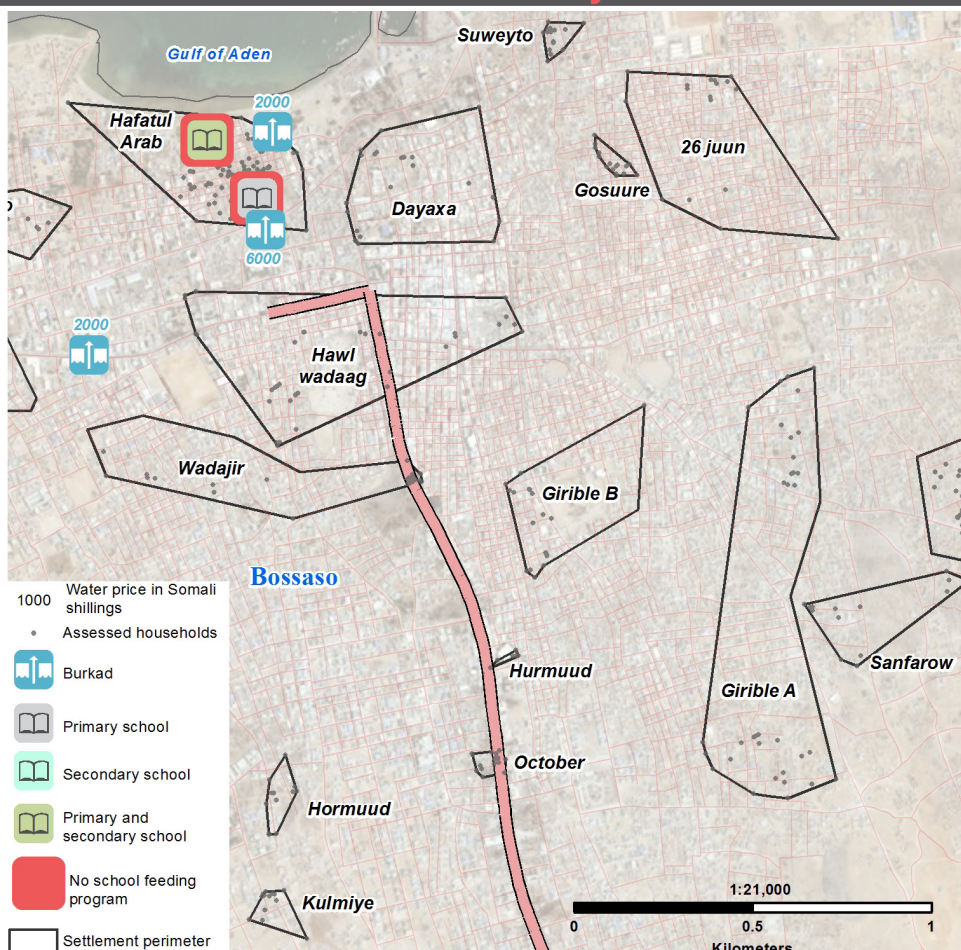


Priority Concerns

Top 3 priority needs reported by households:¹

Water	29%
Food	25%
Shelter	21%

Water and School Accessibility



Water & Sanitation

The 3 most common water sources for drinking water as reported by households:¹

- 1 Burkad **78%**
- 2 Piped system **9%**
- 3 Water trucking distribution **6%**

% of reported latrine types used by households:

- | | |
|-----------------|------------|
| Communal | 70% |
| Private | 23% |
| Open defecation | 7% |

Communication

3 most trusted information sources reported by HHs:¹

- 1 Friends, neighbours and family **84%**
- 2 Radio **46%**
- 3 TV **23%**

Food Security

% of households reporting a change in food spending since previous month:

- | | | |
|-----------|---|------------|
| Increase | | 50% |
| Decrease | | 16% |
| No change | | 34% |

Average food spending per household of six members for one week: **18 USD**.

Food Minimum Expenditure Basket (MEB) for Bari in May was **166 USD**.

Livelihood

Top 3 primary livelihood sources in the past year:

- 1 Day labour **55%**
- 2 Contracted job **24%**
- 3 Self employed **5%**

Health

Health facilities available within 5 km of the assessed settlements:

- | | |
|---------------|----------|
| PCU | 4 |
| Health centre | 3 |

Education

Schools available within 1km of the assessed settlements:

- | | |
|-------------------|----------|
| Primary | 5 |
| Secondary | 1 |
| Primary/secondary | 1 |

% of households within 1km of a school:

- | | |
|-----|------------|
| Yes | 94% |
| No | 6% |

Average reported school dropout rate during the past school year as reported by school representatives:

- | | |
|-------|------------|
| Boys | 19% |
| Girls | 24% |

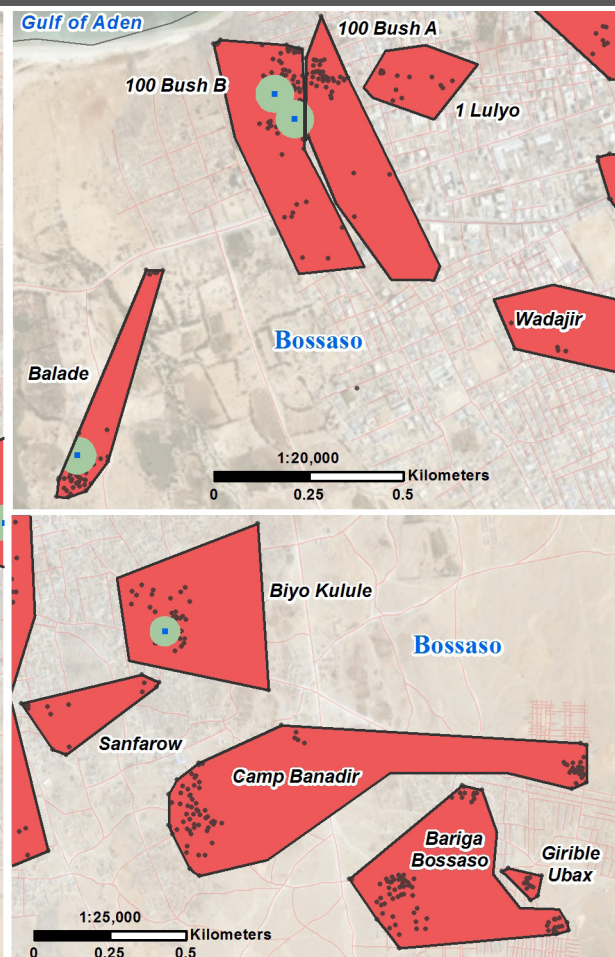
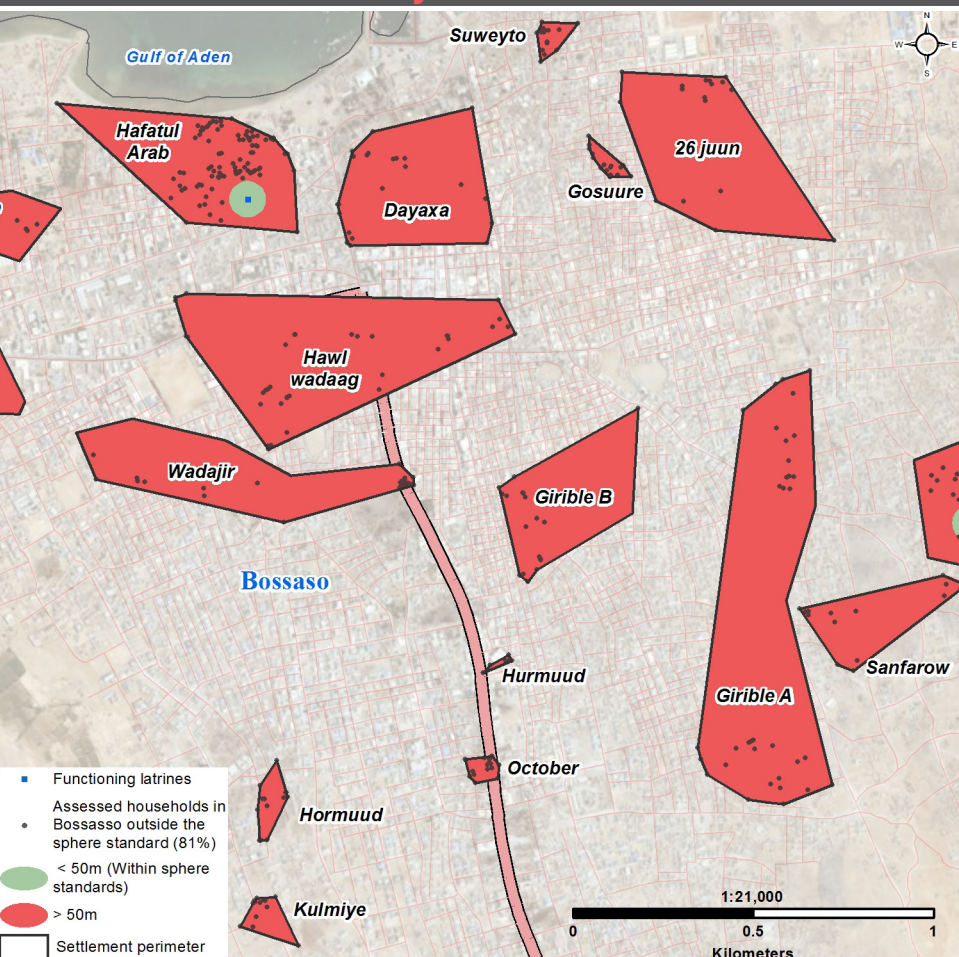
Vulnerabilities

% of households reporting the following members:

- | | |
|-----------------------------|------------|
| Pregnant/lactating women | 30% |
| Disabled or chronically ill | 10% |
| Sick children | 10% |
| Separated children | 2% |

Note: 1) Households could choose multiple answers.

Latrine Accessibility



Note Maps: Facilities were mapped during a REACH assessment 16 - 31 May. The number of shelters within and outside a 50m buffer of the latrines was calculated using spatial analysis. Note Population Estimate: The estimated population was calculated based on key informants accounts of the number of households per settlement. Average household size was calculated based on the average number of household members in the assessment.