



IDP Camp Profile - Debaga

Erbil, Iraq
January 2017

Management agency: BCF
Manager/Focal point: Ahmad Abdo
Phone number: 7515019362
Email: bibaga.manager@bcf.krd
Registration actor: BCF

Summary

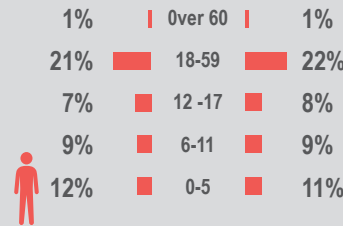
This profile provides an overview of conditions in Debaga camp. Primary data was collected through household surveys on 3-01-2017. Households were randomly sampled to a 95% confidence and 10% margin of error, based on population figures provided by CCCM. In some cases, additional information from camp managers has been used to support findings. Round VI of data collection was in August 2016

Camp Overview

of individuals: 8,469
of households: 1,681
Date opened: 18-10-2015
Occupied number: 1,000
Ongoing extension: no
Planned capacity: 1,000
Camp area: 386,615m²

Demographics

49% male / 51% female

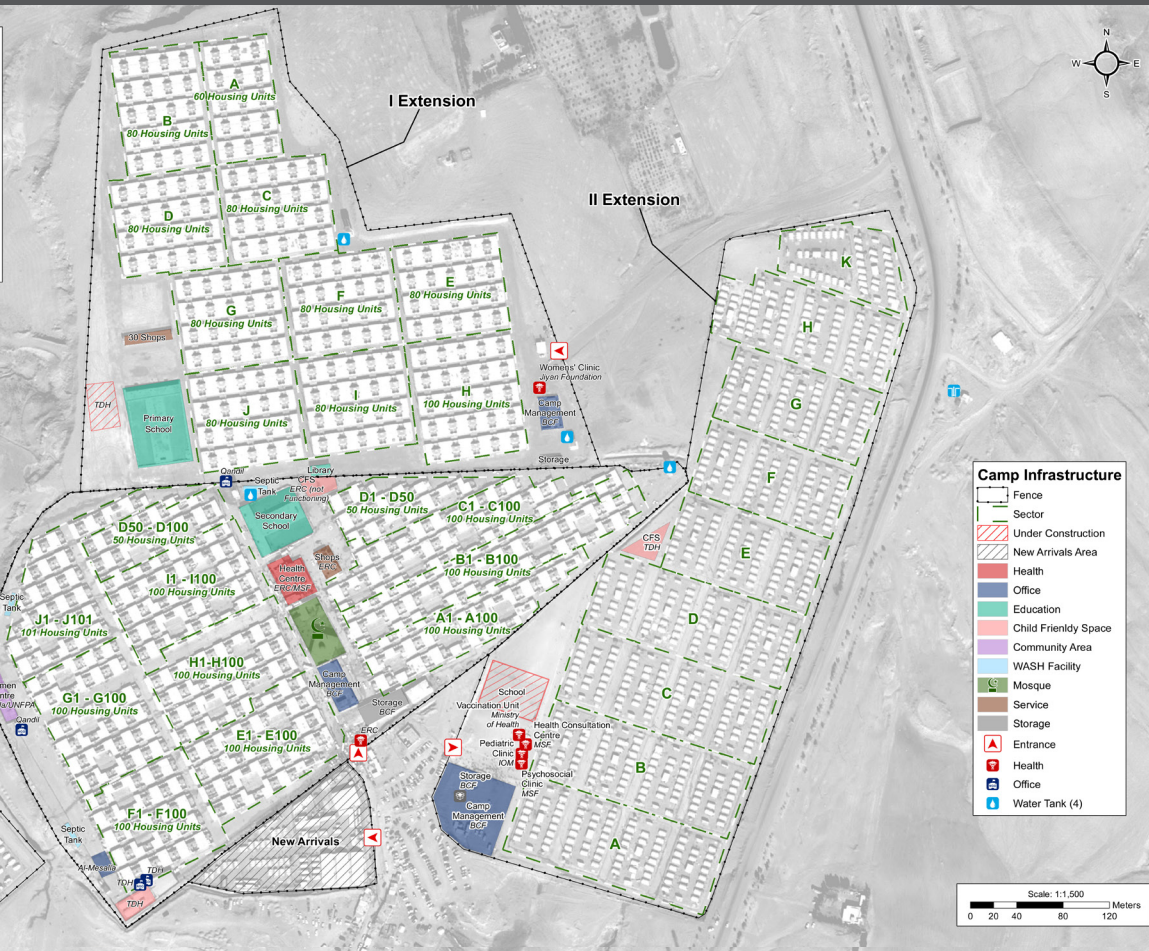
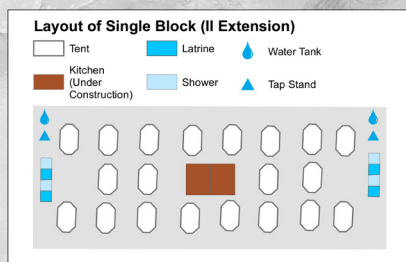


Location Map



IDP Camp Map - Debaga

Lat. 35° 52' 56.374" N Long. 43° 48' 32.748" E



Sectoral Minimum Standards

		Target	Previous Round	Current Round	Achievement
Education	% of children aged 6-11 attending formal school	100%	64%	65%	●
	% of children aged 12-17 attending formal school	100%	50%	31%	●
Food	% of households accessed Family Food Parcel or equivalent in the past month	100%	95%	98%	●
Health	Health services are available on-site or within walking distance	Yes	Yes	Yes	●
CCCM	Average open area per household	min. 30m ²	75m ²	189m ²	●
Protection	% of IDPs registered on an individual basis (MODM/DDM)	100%	96%	99%	●
Shelter	Average covered area per person	min. 3.5m ²	6m ²	6m ²	●
	Average number of individuals per shelter	max.5	7	5	●
WASH	# of persons per latrine		7	5	●
	# of persons per shower	max. 20	7	5	●
	Frequency of solid waste disposal at least weekly	Min. weekly	Yes	Yes	●

Targets based on minimum standards agreed with the CCCM Cluster, Iraq. Findings based on household-level data, enumerator field observations, and camp management documentation
● Minimum standard reached, ● More than 50% minimum standard reached, ● Less than 50% of minimum standard reached or not at all





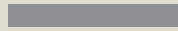
IDP Camp Profile - Debaga

Erbil, Iraq
January 2017

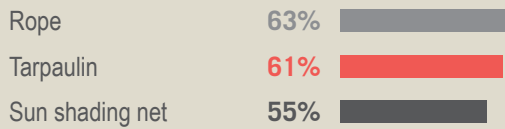
Management agency: BCF
Manager/Focal point: Ahmad Abdo
Phone number: 7515019362
Email: bibaga.manager@bcf.krd
Registration actor: BCF

Shelter

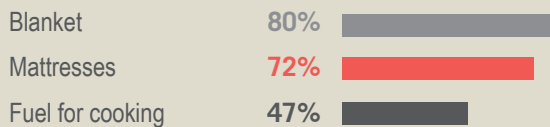
Top observed shelter type



Top reported needed shelter items



Top reported needed basic items



Top reported needed winter item



Top reported needed summer item

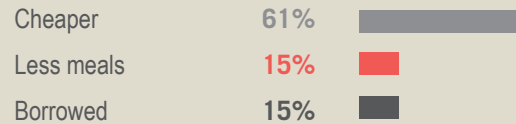


Food Security

Reported access to food assistance

98% accessed food assistance in past month
53% received Public Distribution System (PDS) in past month

Top three food consumption coping strategies

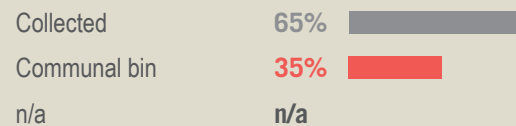


WASH

Latrines and showers

35% reported public or communal latrines
35% public/communal latrines lockable from the inside
4% public/communal latrines with functioning lighting

Top three reported methods of waste removal



Reported drinking water sources

0% connection inside the home to collective water storage
65% connection inside the home to private water storage
35% communal water tap outside the shelter

Access to water

56% reported 24 consecutive hours without access to water in the past month

Community Organisation

IDP committees

100% reported awareness of IDP committee(s)

Complaints mechanism

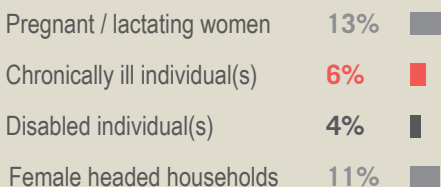
34% made a complaint about conditions or assistance

Protection

Family Separation

0% reported hosting unaccompanied or separated minors
5% reported that other family members intended to join them

Vulnerable groups



Intentions

0% planned to move to a different location in next 3 months

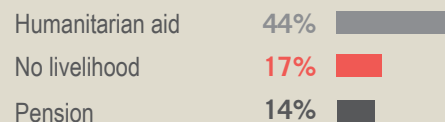
Restrictions

95% reported being able to leave the camp temporarily (e.g. to go to the market, for livelihood opportunities)

Livelihoods

17% reported as being economically inactive

Top three income sources*:



*Households were asked to select all income sources within household.

Top three reported livelihood coping strategies

