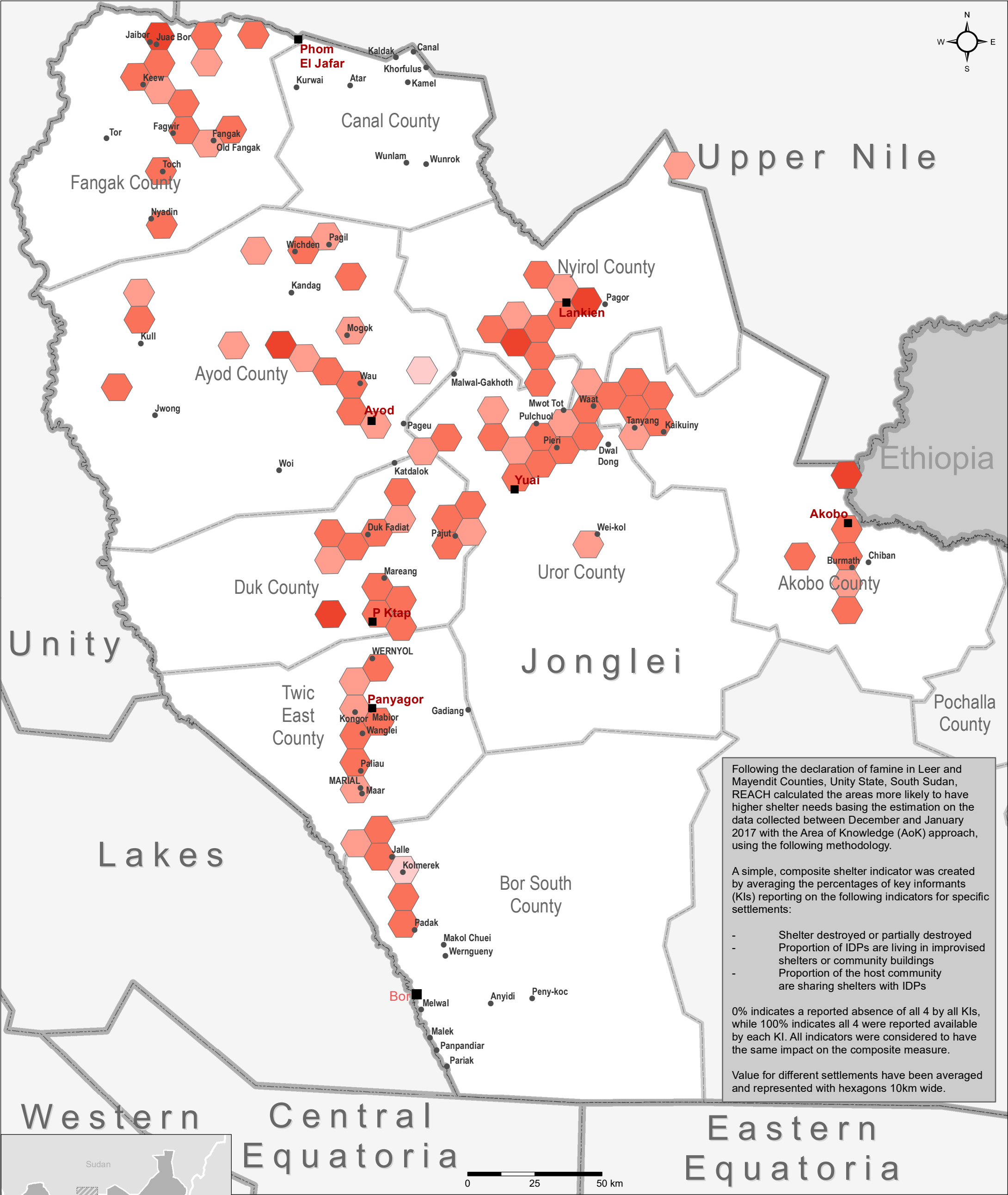


SOUTH SUDAN
Jonglei State - Composite shelter indicators

For Humanitarian Purposes Only
Production date: 28 February 2017



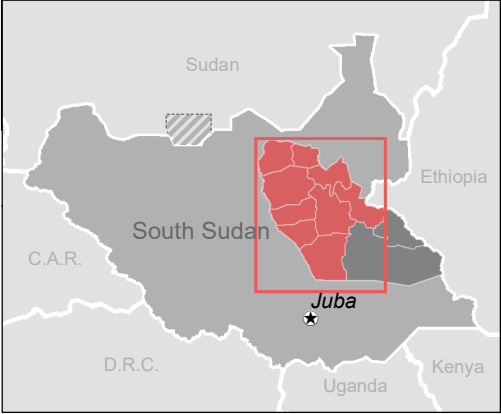
Following the declaration of famine in Leer and Mayendit Counties, Unity State, South Sudan, REACH calculated the areas more likely to have higher shelter needs basing the estimation on the data collected between December and January 2017 with the Area of Knowledge (AoK) approach, using the following methodology.

A simple, composite shelter indicator was created by averaging the percentages of key informants (KIs) reporting on the following indicators for specific settlements:

- Shelter destroyed or partially destroyed
- Proportion of IDPs are living in improvised shelters or community buildings
- Proportion of the host community are sharing shelters with IDPs

0% indicates a reported absence of all 4 by all KIs, while 100% indicates all 4 were reported available by each KI. All indicators were considered to have the same impact on the composite measure.

Value for different settlements have been averaged and represented with hexagons 10km wide.



- Settlements**
- State capital
 - County capital
 - Principal town
 - Village
- Boundaries**
- International
 - County
 - State
 - Disputed area
 - Undetermined

- Composite indicators**
- 100%
 - 0%



Data sources:
Food security indicators: REACH
Administrative boundaries: UNOCHA;
Settlements: UNOCHA;
Coordinate System: GCS WGS 1984
Contact: south.sudan@reach-initiative.org

Note: Data, designations and boundaries contained on this map are not warranted to be error-free and do not imply acceptance by the REACH partners, associates, donors or any other stakeholder

File: REACH_SSD_Map_FSL_Jonglei
CompositeShelterIndicators_28Feb2017