

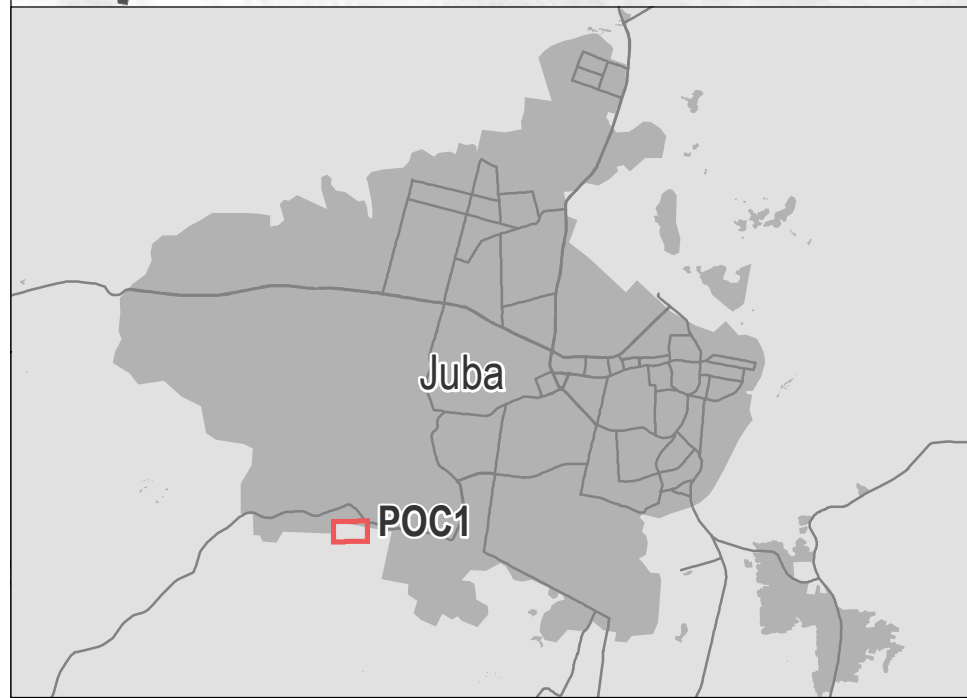
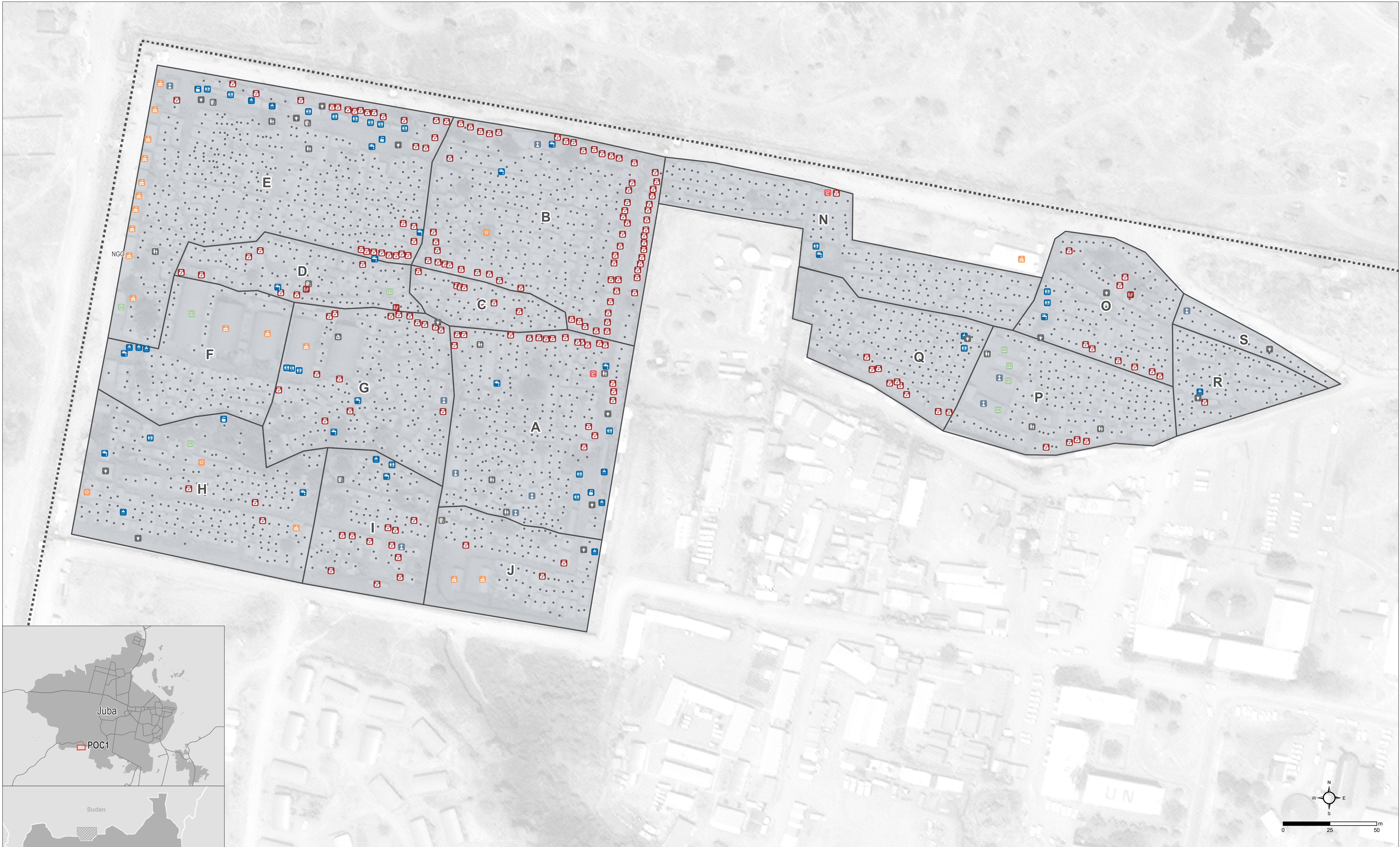


ACTED

SOUTH SUDAN - Central Equatoria State, Juba County

Juba PoC 1 - General Infrastructure - As of 24 June 2018

For Humanitarian Purpose Only
Production date : 13 September 2018



General Infrastructure

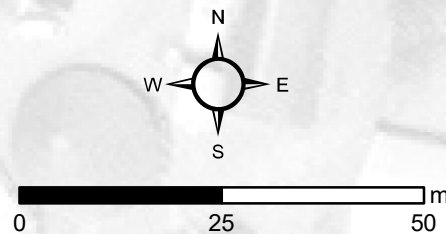
- NGO office (17)
- Zone/Block Office (3)
- Medical Clinic (2)
- School (7)
- Library (1)
- Shop (183)

- Grinding mills (3)
- Community Centre (1)
- Child Friendly Space (10)
- Garbage Point (5)
- Solar Light (15)
- Church (10)
- Latrines (20)

- Waterpoint (17)
- Shower room/block (12)
- Hand washing Station (4)
- Shelter location (2,249)
- Block & zone boundary
- UNMISS perimeter

Data sources: Infrastructure: ACTED (2018)
Roads: OSM (2018), REACH (2018)
Shelter analysis: ACTED (24/07/2018)
Imagery: WorldView-2 from 25 January 2018
Copyright: ©2018 Digital Globe
Source: Department of State,
Humanitarian Information Unit, NextView License
Coordinate System: WGS 1984 UTM Zone 36N
File: REACH_SSD_MAP_JubaPoC1_General_Infra_Jun18_A1
Contact: reach.mapping@impact-initiatives.org

Note: Data, designations and boundaries contained on this map are not warranted to be error-free and do not imply acceptance by the REACH partners, associated, donors mentioned on this map.



REACH
An initiative of
IMPACT Initiatives
ACTED and UNOSAT