

# NIGERIA - Borno State - NYCS Camp

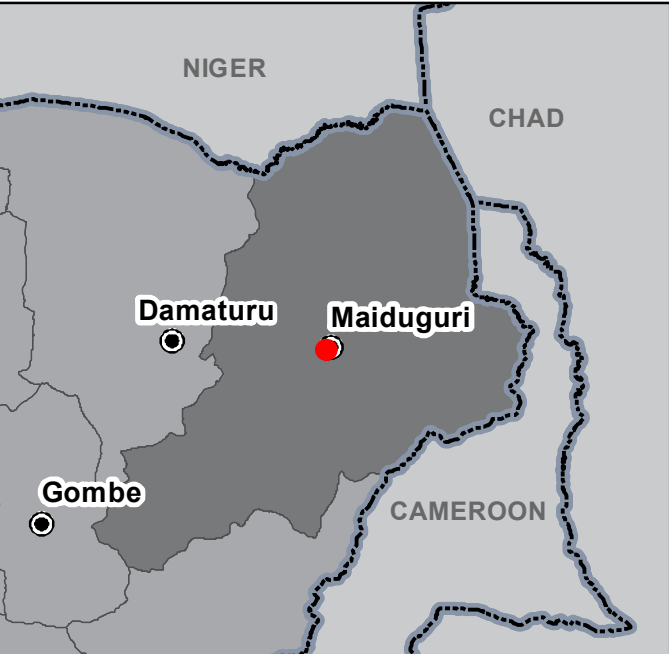
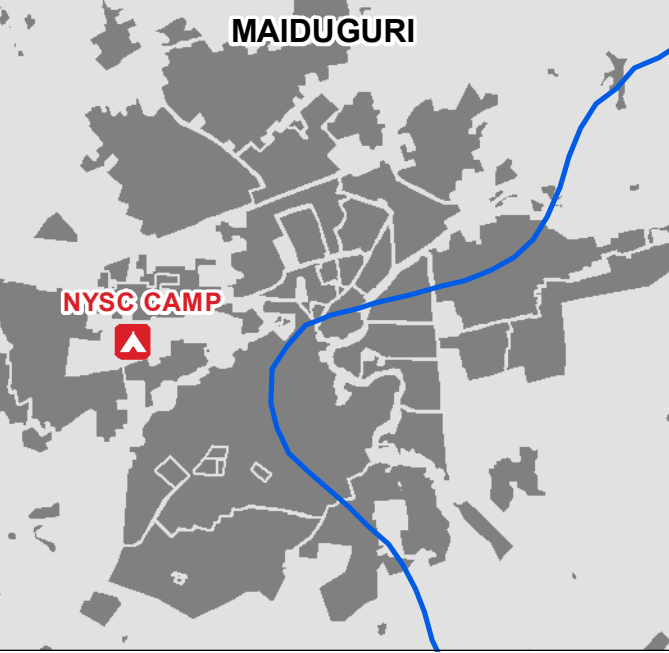
## General Infrastructure - Updated 01 August 2017

For Humanitarian Purposes Only  
Production date : 01 August 2017

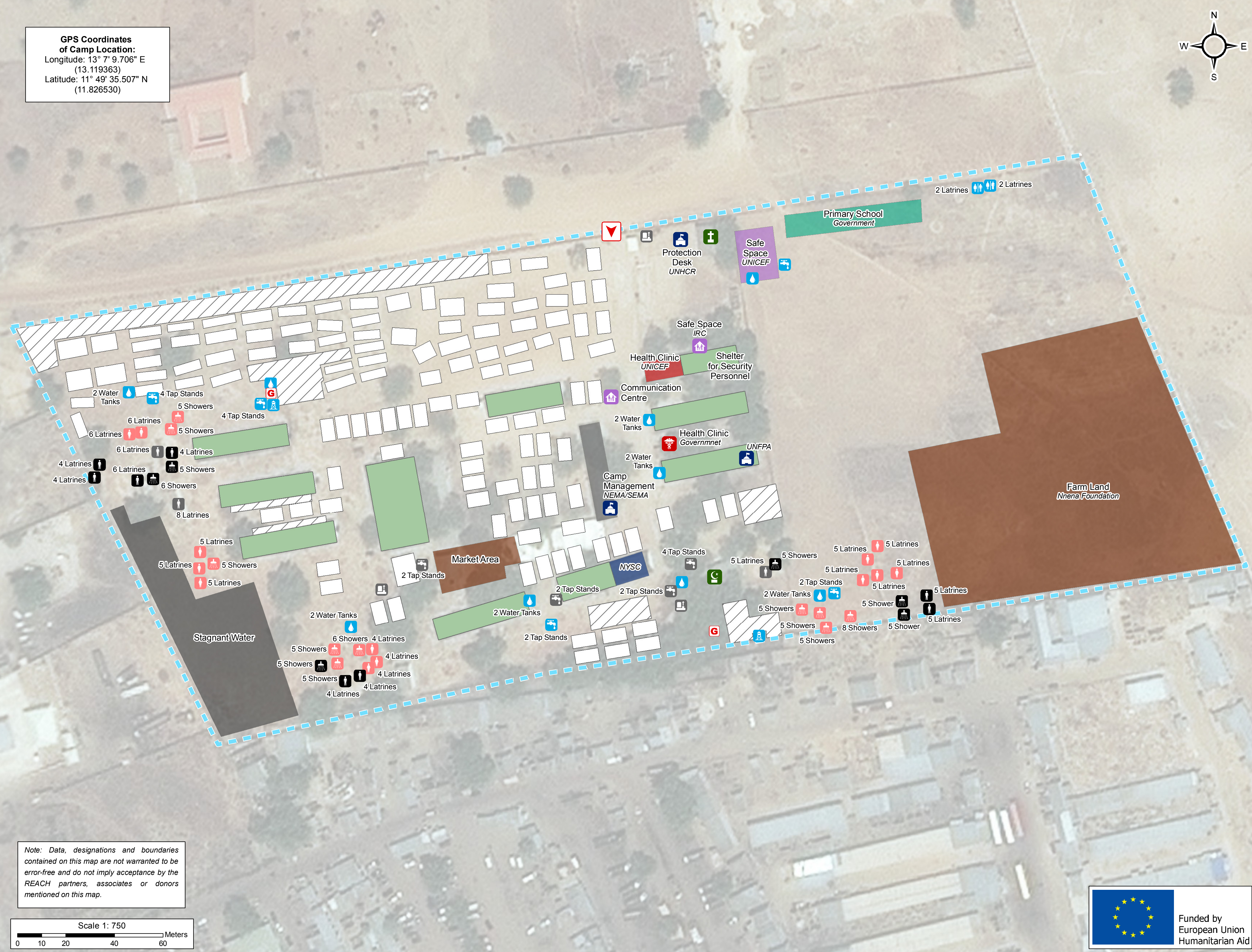
### Camp Infrastructure

- Camp Boundary
- Collective Shelter
- Emergency Shelter
- Makeshift Shelters Area
- Health
- Office
- Education
- Community Area
- Services
- Storage
- Entrance
- Health
- Office
- Community Centre
- Mosque
- Church
- Elevated Water Tank
- Water Tank
- Latrine (Women)
- Latrine (Men)
- Shower (Women)
- Shower (Men)
- Latrine (Mixed)
- Tap Stand
- Latrine (Men, Non Functioning)
- Hand Pump (Non Functioning)
- Tap Stand (Non Functioning)
- Stagnant Water

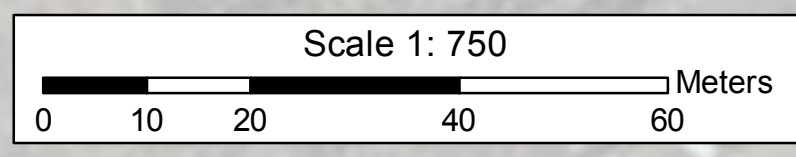
Camp infrastructure: REACH Initiative, 01/08/2017  
Administrative boundaries: OCHA  
Satellite Imagery: WorldView-02 from 11 October 2011  
Copyright: Digital Globe, Inc  
Source: ESRI  
Projection: WGS 1984  
File: NGA\_Map\_NYCS\_Camp\_Infrastructure\_01Aug2017  
Contact : reach.nigeria@reach-initiative.org



**GPS Coordinates of Camp Location:**  
Longitude: 13° 7' 9.706" E (13.119363)  
Latitude: 11° 49' 35.507" N (11.826530)



Note: Data, designations and boundaries contained on this map are not warranted to be error-free and do not imply acceptance by the REACH partners, associates or donors mentioned on this map.



Funded by  
European Union  
Humanitarian Aid

REACH  
An initiative of  
IMPACT Initiatives  
ACTED and UNOSAT