



UN House PoC 3 Snapshot

Juba County, Central Equatoria State, South Sudan

South Sudan Displacement Crisis

November 2015

Summary

Protection of Civilians site 3 (PoC 3) is the largest of three PoCs at the UN House site in Juba which was established in December 2013.

In the past month, 1542 new arrivals were recorded, with 77% coming from Unity State, following the trend from previous months. These Internally Displaced People (IDPs) are not included in the official registered figure, and thus put a strain on services provided.

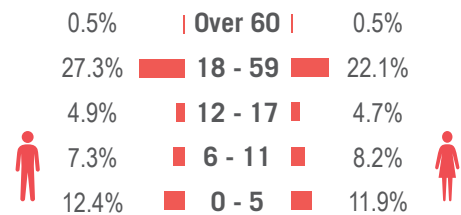
Data was provided by IOM (as of 01/10/2015) and camp manager (as of 04/11/2015) spatial data was provided by REACH (as of 23/01/2015).

Implementing Agencies

	EDUCATION	Intersos, DMI
	FOOD	World Vision
	HEALTH	IMC, Concern (Nutrition), Magna
	PROTECTION	IRC, Help Age, TDH, UNFPA, NVPF, SSR, SFCG, UNPOL, GCVPP, UNPOL Community Policing
	SHELTER / NFI	Vacant
	WASH	SI, Theso

Demographics

52.4% male / 47.5% female*



* Population figure by Camp Manager (as of 06 Oct 2015)

Site Overview

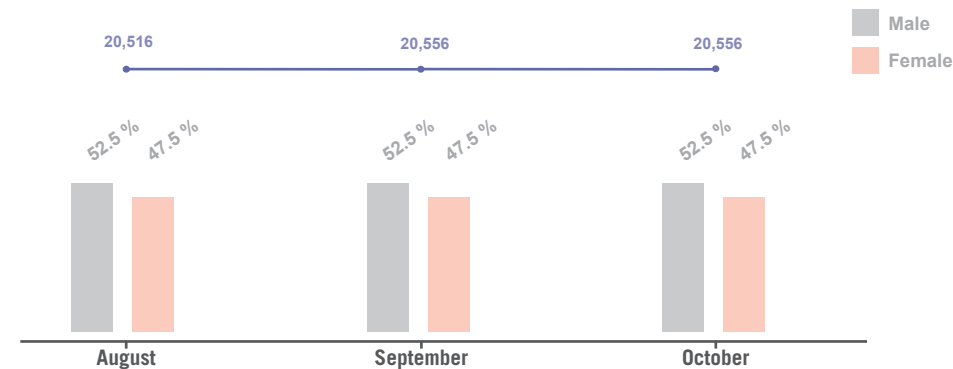
Site management:	ACTED
Site population:	20,556
Accommodation:	5,221 official structures and between 500 - 1,000 unauthorized structures
Planned capacity:	5,350 structures
Site area:	629,782 m ²
IDP County of origin	
1 st largest group	Juba County
Other large groups	Rubkona County

CCCM Mechanisms

The following structures are in place:

- ☒ Camp management committee
- ☒ Block leaders
- ☒ Other committees
 - Women and Youth
 - Religious leaders
 - Community watch groups

Demographic Trends**



** Figure extracted from the DTM. No extra data / information was available.

Location Map

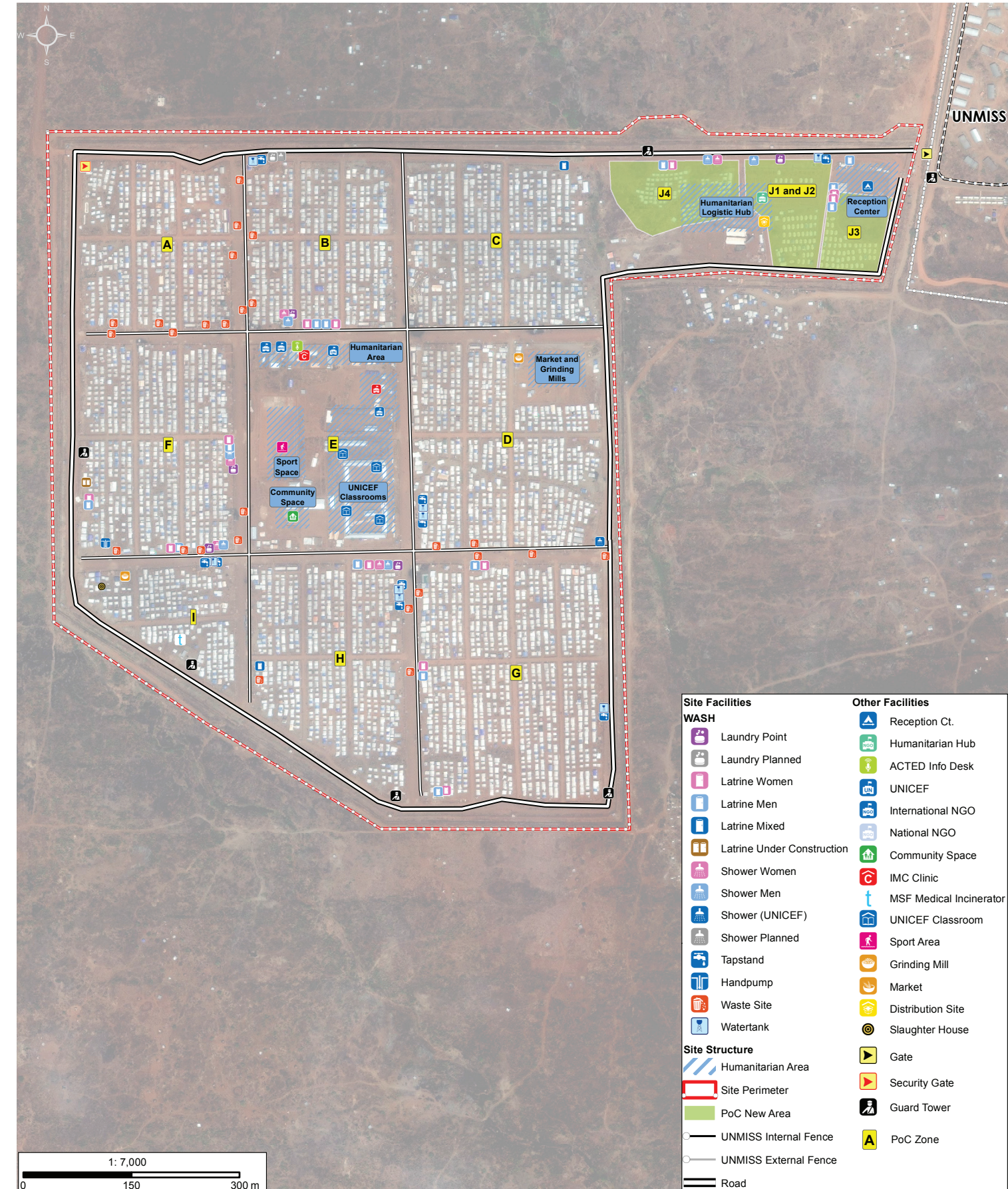


Reported Priority Needs

Priority needs were reported and ranked by camp management as:

- 1 Registration
- 2 Water access
- 3 Mental health / PSS

PoC 3 Site Map



Sectoral Overview

		Target***	Achieved	
Food	Food accessible on-site	Yes	Yes	●
	Markets physically accessible from site	Yes	Yes	●
Health	Health services are available on-site or within walking distance	Yes	Yes	●
CCCM	Average open area per person	min. 30 m ²	30.6 m ²	●
	% of families living in rakoobas/tukul	min 75%	more than 75%	●
	% of families living in makeshift shelters	0%	less 25%	●
	Average number of individuals per tent	max 5	3.9	●
	Average covered area per person****	min 4.2 m ²	5.3 m ²	●
Shelter	Liters of water available per person per day	min 15 L	17 L	●
	# of persons per latrine (m/f)	max 20	24	●
	# of persons per shower (m/f)	max 20	82	●

*** Targets are based on minimum standards agreed with the CCCM Cluster ● Target reached, ● Target more than 50% reached, ● Target less than 50% or not at all reached, ● No data

**** PoC 3 shelters averagely measure 21 m²