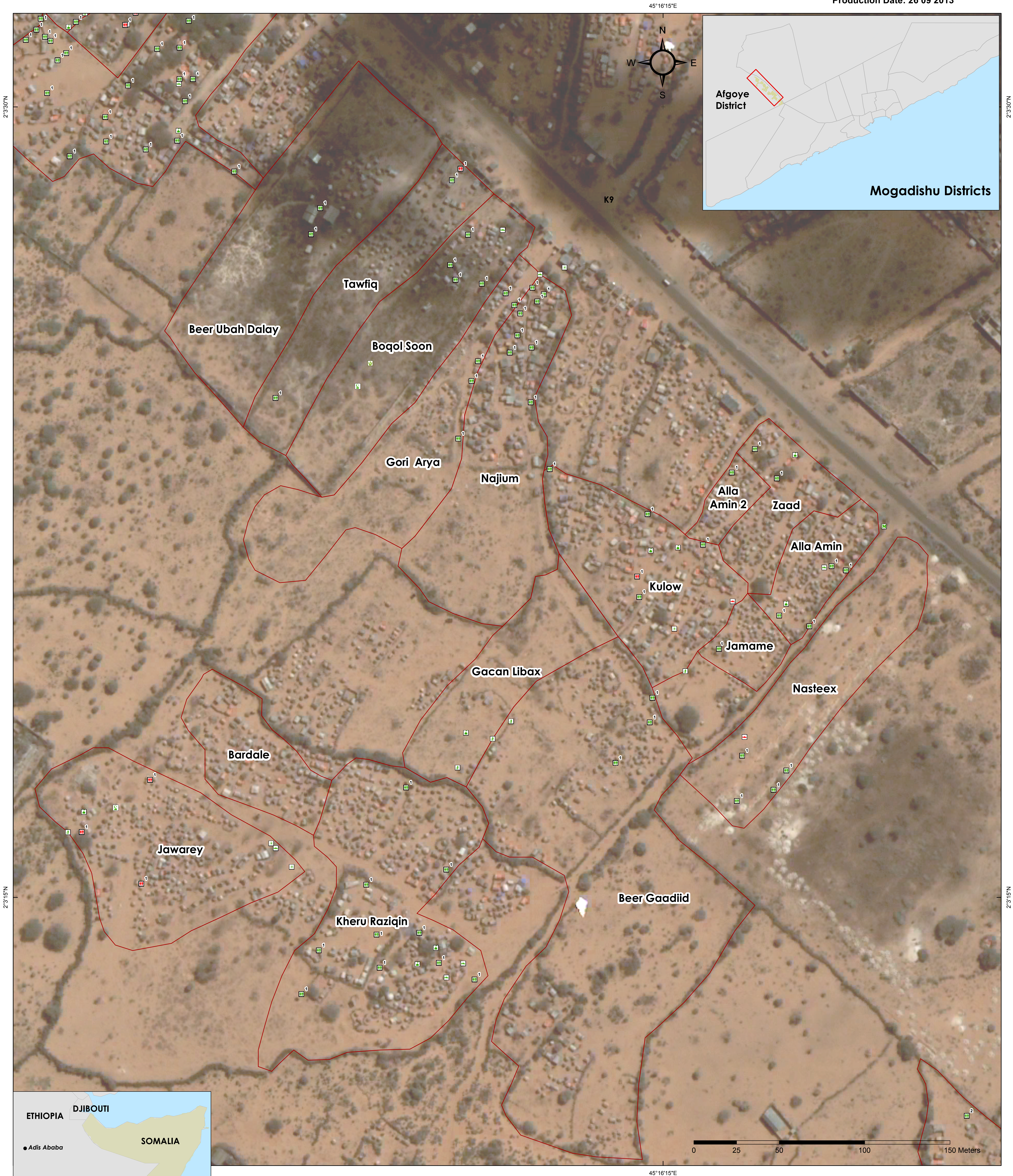


# SOMALIA Mogadishu - Camp X Control-K13 - Dharkenley Facilities - Zone K9 - 15th September 2013

For Humanitarian Relief Purposes Only  
DRAFT  
Production Date: 26 09 2013



### Camp Facility - typology

- Water Point
- Child Space
- Mosque
- Market
- Garbage
- Community Space
- Quranic School
- 2 Latrine with Number of Droppholes

Only the latrines located inside the umbrella areas have been considered. The number of functional latrines outside the umbrella areas is 10 (total number of droppholes = 13)

Umbrella boundaries and name

### Camp Facility - status

- Functional
- Non Functional

Data Sources:  
Facilities and Umbrella areas: Reach Assessment; Administrative Boundaries: OCHA  
Background image: QB / WV01 / WV02, 3 June 2013  
Coordinate System: GCS WGS 1984  
File: SOM\_Mogadishu\_XControl-K13\_Dharkenley\_Camp\_facilities\_K9\_26SEP2013\_A0  
Contact: reach.mapping@impact-initiatives.org  
Note: Data, designations and boundaries contained on this map are not warranted to error-free and do not imply acceptance by the REACH partners, associates, donors mentioned on this map.

Funded by



Humanitarian Aid  
and Civil Protection



FROM THE AMERICAN PEOPLE