



South Sudan - Protection

Assessment of Hard-to-Reach Areas in South Sudan

Overview

The continuation of conflict since December 2013 has created a complex humanitarian crisis in the country, restricting humanitarian access and hindering the flow of information required by aid partners to deliver humanitarian assistance to populations in need. To address information gaps faced by the humanitarian response in South Sudan, REACH employs its Area of Knowledge (AoK) methodology to collect relevant information in hard-to-reach areas to inform humanitarian planning and interventions outside formal settlement sites.

Using the AoK methodology, REACH remotely monitors needs and access to services in the

Greater Upper Nile, Greater Equatoria and Greater Bahr el Ghazal regions. AoK data is collected monthly, through multi-sector interviews with the following typology of key informants (KIs):

- KIs who are newly arrived internally displaced persons (IDPs) who have left a hard-to-reach settlement in the last month
- KIs who have been in contact with someone living in a hard-to-reach settlement, or have been visiting one in the last month (traders, migrants, family members, etc.)
- KIs who are remaining in hard-to-reach settlements, contacted through phone

Selected KIs are purposively sampled and have knowledge from within the last month about a specific settlement in South Sudan, with data collected at the settlement level. About half of settlements assessed have more than one KI reporting on the settlement. In these cases, data is aggregated at the settlement level according to a weighting mechanism, which can be found in the [Terms of Reference \(ToRs\)](#).

All percentages presented in this factsheet, unless otherwise specified, represent the proportion of settlements assessed with that specific response.

The findings presented in this factsheet are indicative of the broad protection trends in assessed

settlements in May 2021, and are not statistically generalisable.

Assessment Coverage

1793 Key informants interviewed

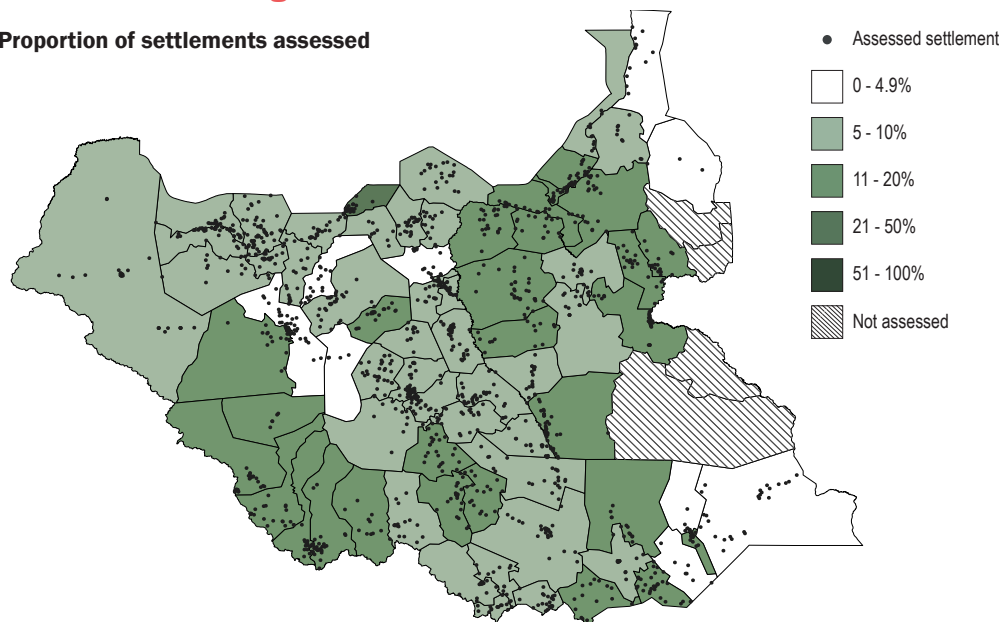
1545 Settlements assessed

74 Counties assessed

67 Counties with 5% or more coverage¹

Assessment coverage

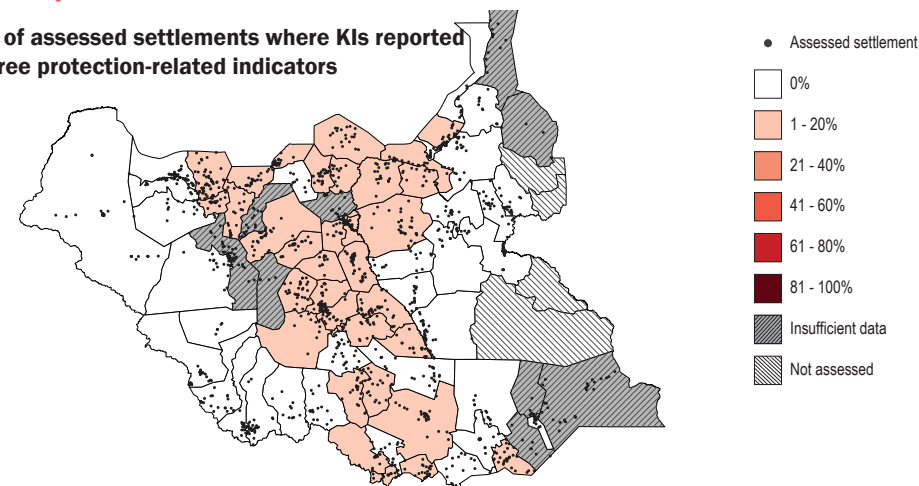
Proportion of settlements assessed



¹Data is only represented for counties in which at least 5% of settlements have been assessed. The most recent OCHA Common Operational Dataset (COD) released in March 2019 has been used as the reference for settlement names and locations.

Conflict composite indicator

Proportion of assessed settlements where KIs reported "yes" to three protection-related indicators



This conflict composite indicator aims at measuring both perceptions of certain risks associated with conflict, as well as the occurrence and impact of reported conflict in the month prior to data collection. The composite was created by averaging the 'yes' responses of settlements reporting on the following indicators, with all indicators considered to have the same weight:

- Killing or forced recruitment cited as a main protection concern
- Incidence of conflict resulting in civilian death
- Incidence of shelter damage due to conflict



South Sudan - Protection

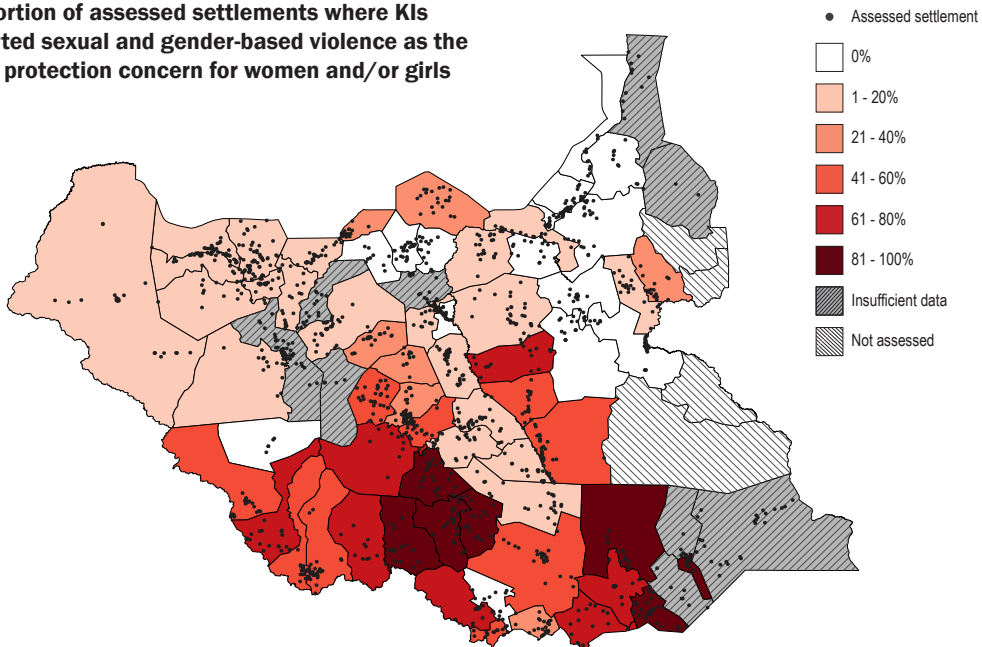
Assessment of Hard-to-Reach Areas in South Sudan

South Sudan Displacement Crisis

May 2021

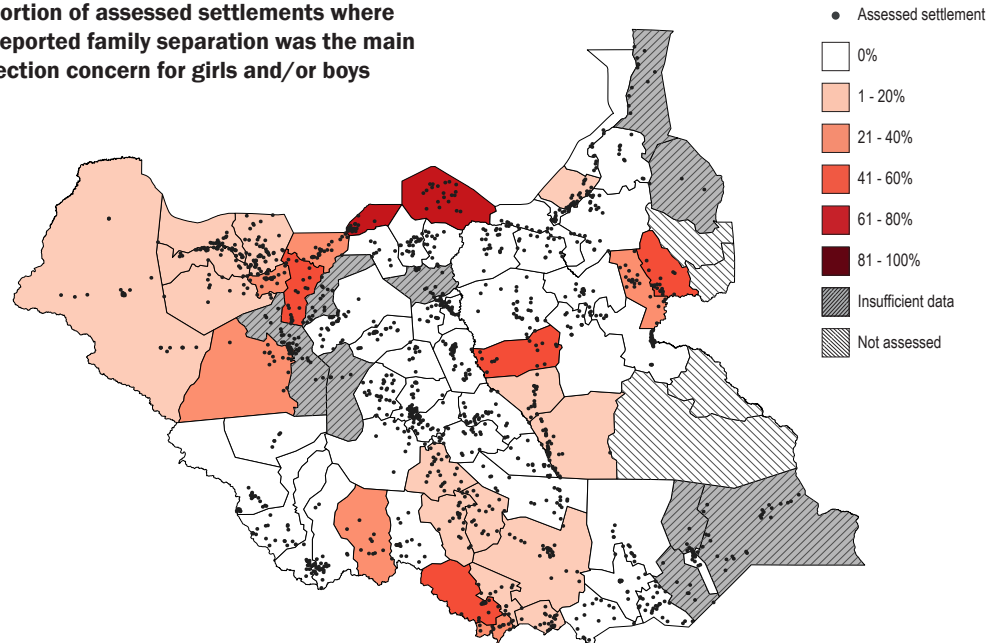
Sexual and gender based violence

Proportion of assessed settlements where KIs reported sexual and gender-based violence as the main protection concern for women and/or girls



Family separation

Proportion of assessed settlements where KIs reported family separation was the main protection concern for girls and/or boys



Main Protection Concerns

Top five counties with the highest proportion of assessed settlements where KIs reported the main protection concern for women (18 years and older) is conflict-related

Lainya	60%	<div style="width: 60%; background-color: #e34a33;"></div>
Pariang	55%	<div style="width: 55%; background-color: #e34a33;"></div>
Yei	50%	<div style="width: 50%; background-color: #e34a33;"></div>
Duk	40%	<div style="width: 40%; background-color: #e34a33;"></div>
Yirol East	34%	<div style="width: 34%; background-color: #e34a33;"></div>

Top five counties with the highest proportion of assessed settlements where KIs reported the main protection concern for men (18 years and older) is conflict-related

Pariang	70%	<div style="width: 70%; background-color: #e34a33;"></div>
Yei	62%	<div style="width: 62%; background-color: #e34a33;"></div>
Lainya	60%	<div style="width: 60%; background-color: #e34a33;"></div>
Abiemnhom	57%	<div style="width: 57%; background-color: #e34a33;"></div>
Mundri East	39%	<div style="width: 39%; background-color: #e34a33;"></div>

Top five counties with the highest proportion of assessed settlements where KIs reported the main protection concern for girls (younger than 18 years) is conflict-related

Pariang	60%	<div style="width: 60%; background-color: #e34a33;"></div>
Tonj East	32%	<div style="width: 32%; background-color: #e34a33;"></div>
Awerial	28%	<div style="width: 28%; background-color: #e34a33;"></div>
Abiemnhom	26%	<div style="width: 26%; background-color: #e34a33;"></div>
Morobo	21%	<div style="width: 21%; background-color: #e34a33;"></div>

Top five counties with the highest proportion of assessed settlements where KIs reported the main protection concern for boys (younger than 18 years) is conflict-related

Pariang	70%	<div style="width: 70%; background-color: #e34a33;"></div>
Duk	53%	<div style="width: 53%; background-color: #e34a33;"></div>
Abiemnhom	52%	<div style="width: 52%; background-color: #e34a33;"></div>
Yei	50%	<div style="width: 50%; background-color: #e34a33;"></div>
Gogrial West	43%	<div style="width: 43%; background-color: #e34a33;"></div>

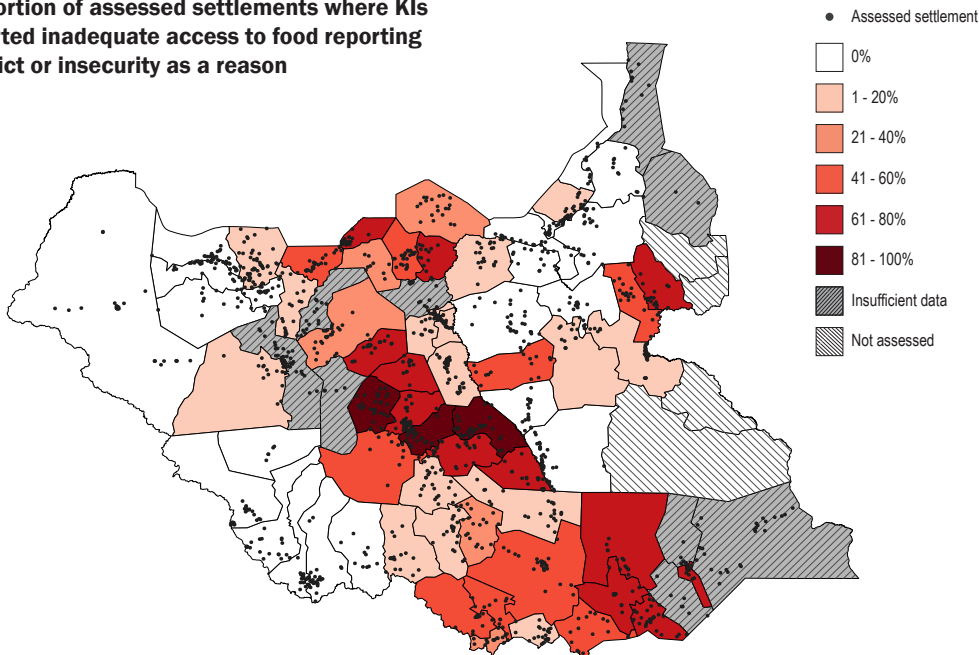


South Sudan - Protection

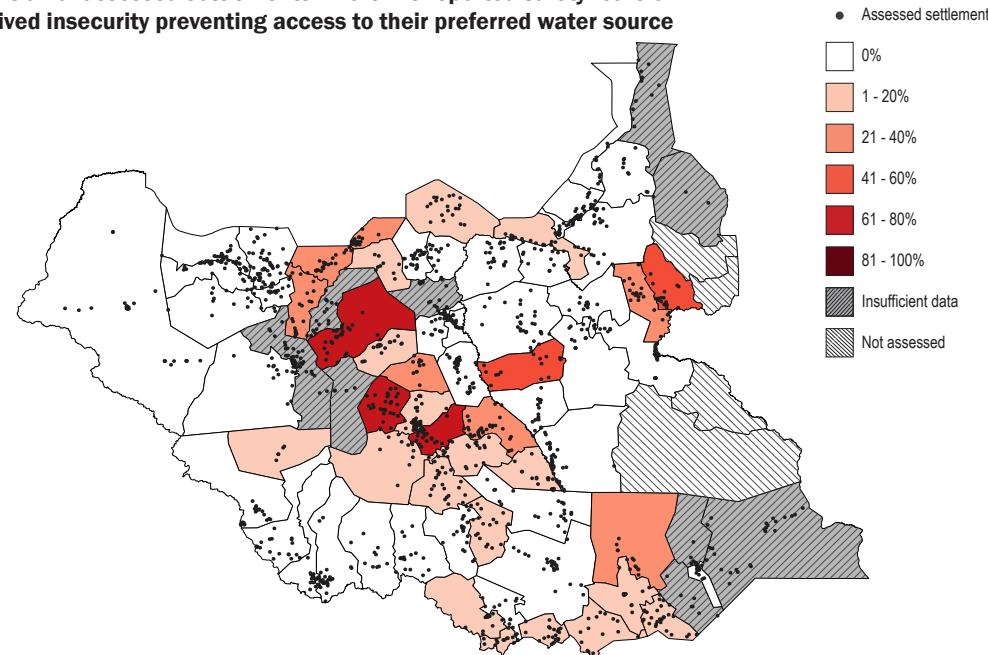
Assessment of Hard-to-Reach Areas in South Sudan

Protection-related service access constraints and vulnerabilities

Proportion of assessed settlements where KIs reported inadequate access to food reporting conflict or insecurity as a reason



Proportion of assessed settlements where KIs reported safety fears or perceived insecurity preventing access to their preferred water source



Insecurity: market services

Top five counties with the highest proportion of assessed settlements where KIs reported people are unable to access their preferred market due to fear for their safety

Rumbek North	50%	<div style="width: 50%; height: 10px; background-color: #e34a33;"></div>
Cueibet	50%	<div style="width: 50%; height: 10px; background-color: #e34a33;"></div>
Rumbek East	47%	<div style="width: 47%; height: 10px; background-color: #e34a33;"></div>
Kapoeta South	45%	<div style="width: 45%; height: 10px; background-color: #e34a33;"></div>
Yirol East	38%	<div style="width: 38%; height: 10px; background-color: #e34a33;"></div>

Insecurity: education services

Top five counties with the highest proportion of assessed settlements where KIs reported the area being insecure as the main reason for inaccessibility of education services in the settlements*

Morobo	38%	<div style="width: 38%; height: 10px; background-color: #e34a33;"></div>
Malakal	33%	<div style="width: 33%; height: 10px; background-color: #e34a33;"></div>
Panyikang	29%	<div style="width: 29%; height: 10px; background-color: #e34a33;"></div>
Fashoda	29%	<div style="width: 29%; height: 10px; background-color: #e34a33;"></div>
Yei	24%	<div style="width: 24%; height: 10px; background-color: #e34a33;"></div>

Insecurity: livelihoods

Top five counties with the highest proportion of assessed settlements where KIs reported that people are unable to access livelihood activities primarily due to conflict or insecurity related reasons*

Ulang	55%	<div style="width: 55%; height: 10px; background-color: #e34a33;"></div>
Luakpiny/Nasir	53%	<div style="width: 53%; height: 10px; background-color: #e34a33;"></div>
Morobo	46%	<div style="width: 46%; height: 10px; background-color: #e34a33;"></div>
Yei	40%	<div style="width: 40%; height: 10px; background-color: #e34a33;"></div>
Abiemnhom	39%	<div style="width: 39%; height: 10px; background-color: #e34a33;"></div>

Insecurity: shelter

Top five counties with the highest proportion of assessed settlements where KIs reported that there has been shelter damage or destruction due to conflict or insecurity, bushfire or flooding*

Fangak	57%	<div style="width: 57%; height: 10px; background-color: #e34a33;"></div>
Panyikang	54%	<div style="width: 54%; height: 10px; background-color: #e34a33;"></div>
Rumbek North	40%	<div style="width: 40%; height: 10px; background-color: #e34a33;"></div>
Ayod	32%	<div style="width: 32%; height: 10px; background-color: #e34a33;"></div>
Abiemnhom	29%	<div style="width: 29%; height: 10px; background-color: #e34a33;"></div>

*Insecurity or conflict has been defined as fighting in the AoK tool.

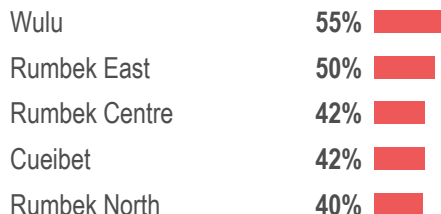


South Sudan - Protection

Assessment of Hard-to-Reach Areas in South Sudan

Community relations - IDP

Top five counties with the highest proportion of assessed settlements where KIs reported IDP presence and that IDPs generally have a poor relationship with the local community



Community relations - Returnees

Top five counties with the highest proportion of assessed settlements where KIs reported returnee presence and that returnees generally have a poor relationship with the local community



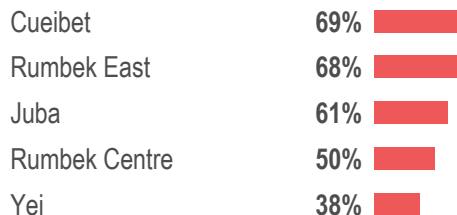
Dispute mechanisms

Top five most commonly reported actors most people go to when faced with disputes, crimes, or other problems



Housing, land and property issues

Top five counties with the highest proportion of assessed settlements where KIs reported housing, land and property rights issues



Landmines and unexploded ordnance

Three counties with assessed settlements where KIs reported presence of landmines and/or unexploded ordnance



Definitions

Land grabbing is generally understood to mean a process of large-scale acquisition of agricultural land by any person or entity (public or private, foreign or domestic) via any means ('legal' or 'illegal') without consulting the local population beforehand or obtaining its consent.

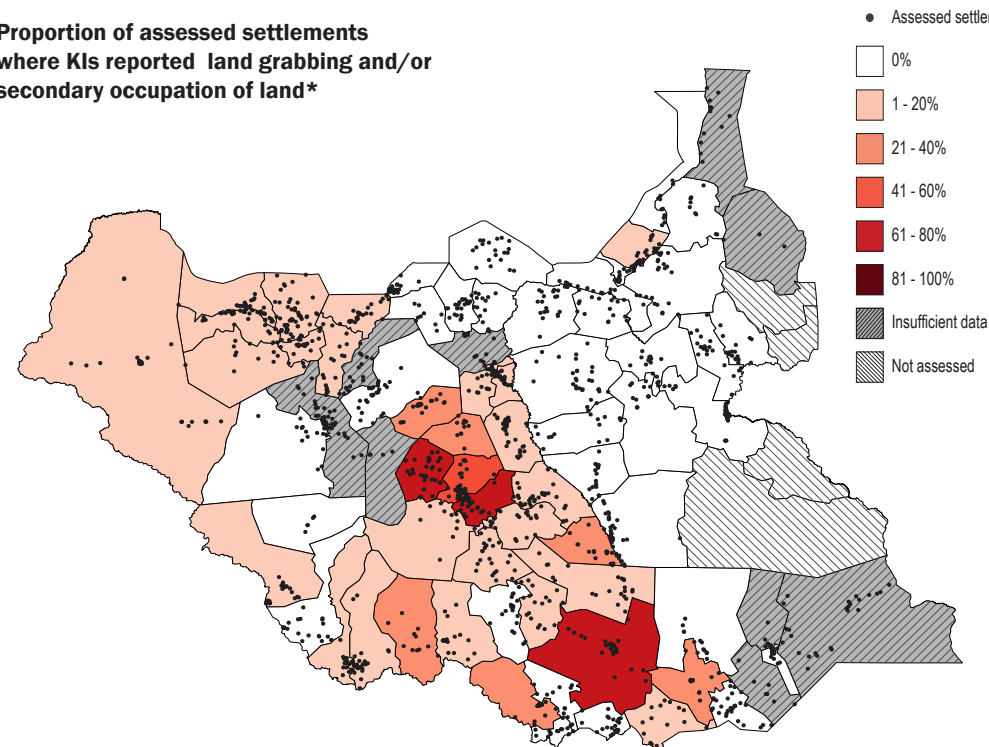
Land expropriation is the act of claiming privately owned property for public purposes without offering any equitable compensation for the owners.

Secondary occupation occurs when any person settles or occupies a land or house without a customary or legal title or without the express consent of the owner or person legally in charge of the property.

Forced eviction is the permanent or temporary removal against their will of individuals, families and/or communities from the homes and/or land which they occupy, without the provision of, and access to, appropriate forms of legal or other protection (essentially without a judicial process). This can be a consequence of land grabbing, land expropriation or secondary occupation, and can also be a standalone issue.

Land grabbing/secondary occupation

Proportion of assessed settlements where KIs reported land grabbing and/or secondary occupation of land*



This includes assessed settlements where KIs reported any of the following;

- Land grabbing
- Land being taken without sufficient compensation
- Secondary occupation of land

*The indicator is representative of data collected in April 2021

² Definitions are from the Housing, Land and Property Technical Working Group, South Sudan