

Somalia - Luuq

ASharaf and Jazeera II - Settlement Facilities (August 2014)

For Humanitarian Relief Purposes Only
Production date : 19 September 2014


Schools


 Primary school

 Adults

Water points

 Other Piped System

 Protected Well-without Hand Pump


 Tank and Tap

 Water Kiosk


 Water Trucking Distribution Point


Latrine

 Household latrine

 Communal latrine

Facilities

 Community centre


 Garbage collection point

 Health Facility

 Kiosk

 Market

 Mosque

 Assessed IDP settlement

 Shelter (UNOSAT analysis June 2014)

Data sources:

Facilities and IDP sections: REACH assessment

Shelter Points: UNOSAT

Admin level: OCHA COD

Imagery Date (1): 06 July 2014

WorldView-2/DigitalGlobe

Coordinate System: GCS WGS 1984

File: REACH_SOM_Map_SomaliaDisplacementCrisis_Luuq_JazeeraII_Facilities_06Nov2014_A3

Contact : reach.mapping@impact-initiatives.org

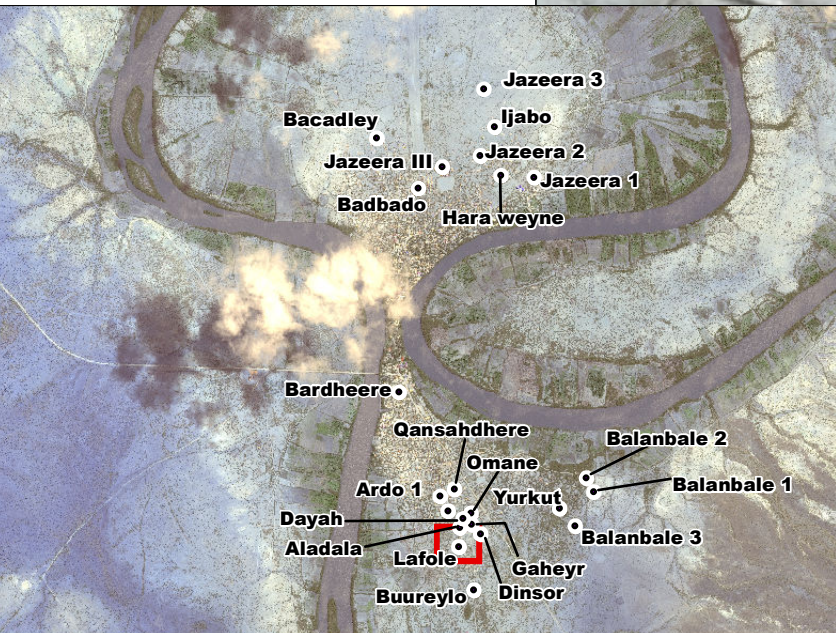
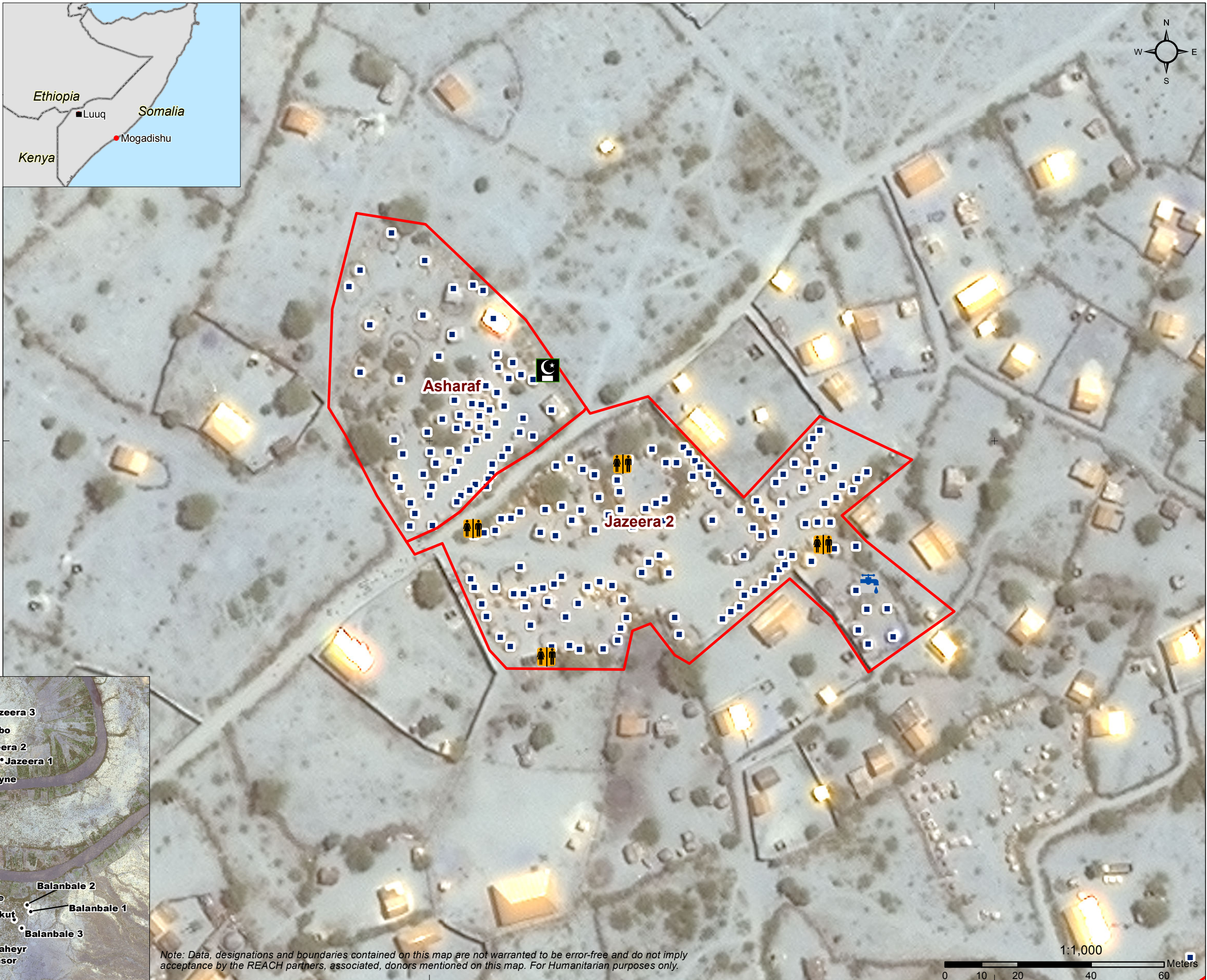
Funded by



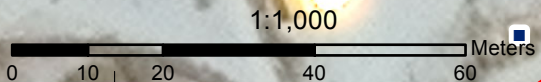
Humanitarian Aid
and Civil Protection



USAID
FROM THE AMERICAN PEOPLE



Note: Data, designations and boundaries contained on this map are not warranted to be error-free and do not imply acceptance by the REACH partners, associated, donors mentioned on this map. For Humanitarian purposes only.



3°48'25\"/>