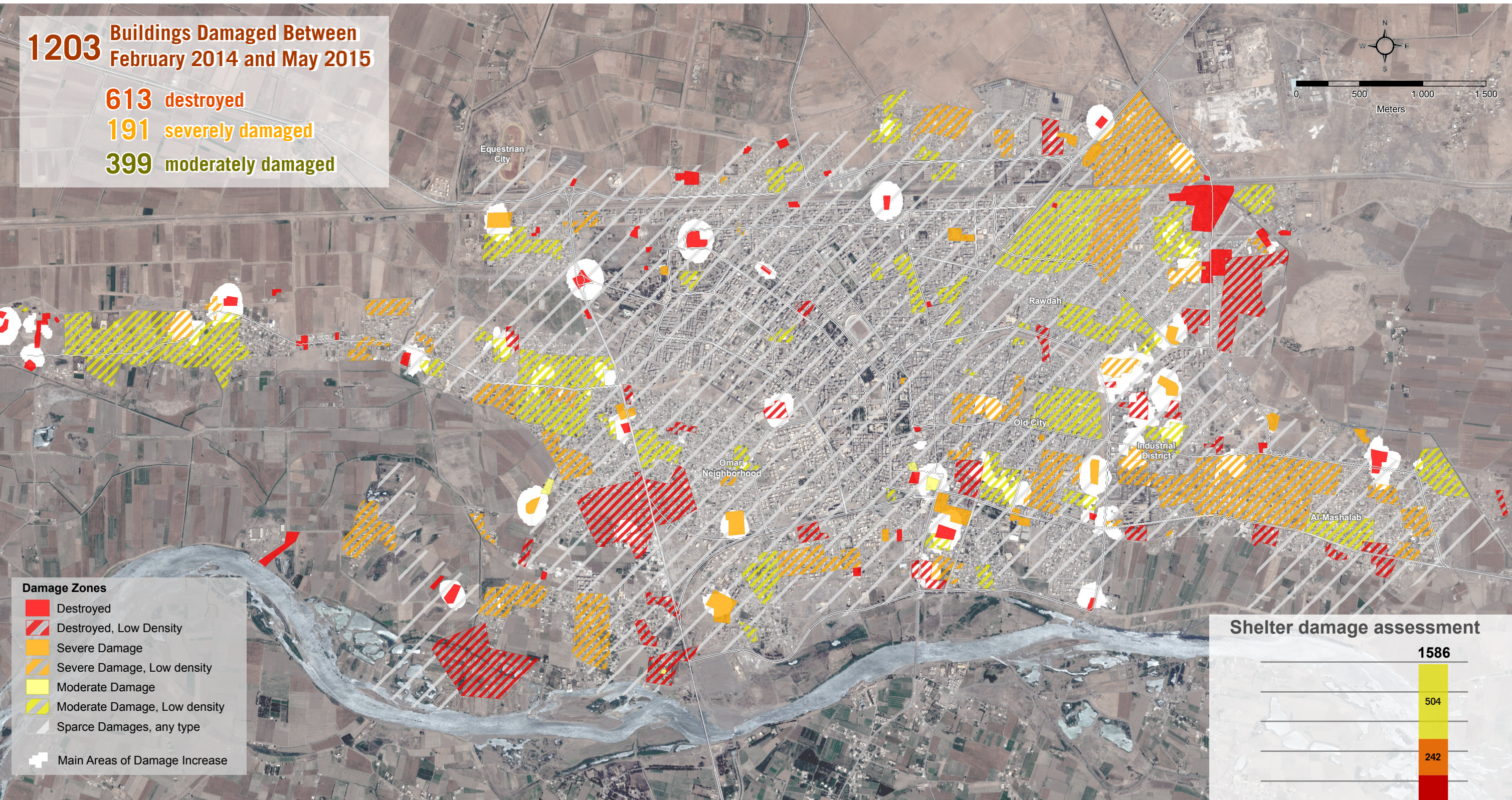
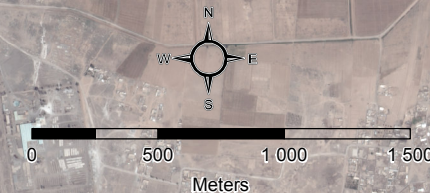


1203 Buildings Damaged Between February 2014 and May 2015

613 destroyed

191 severely damaged

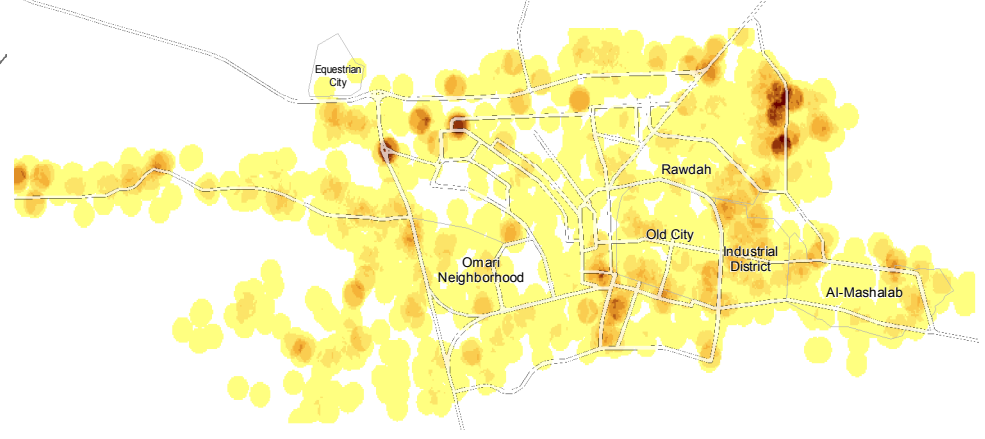
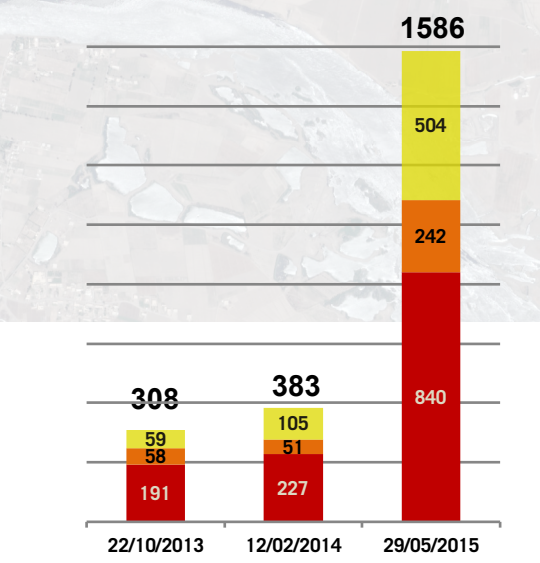
399 moderately damaged



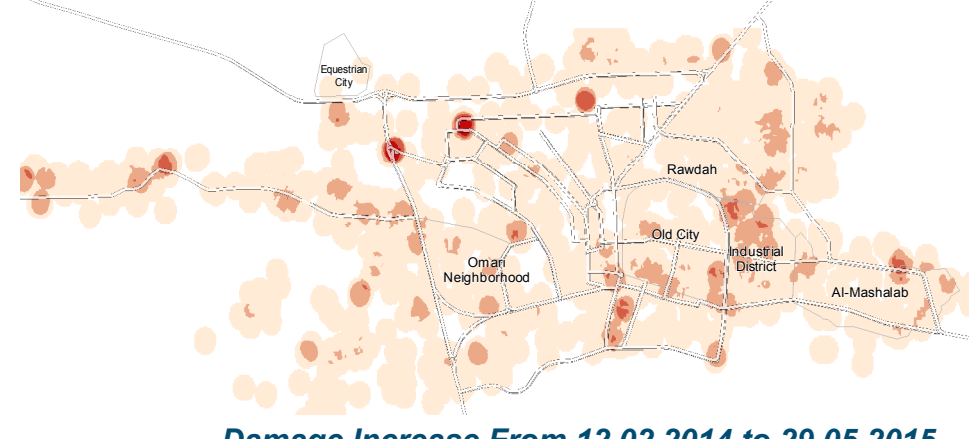
Damage Zones

- Destroyed
- Destroyed, Low Density
- Severe Damage
- Severe Damage, Low density
- Moderate Damage
- Moderate Damage, Low density
- Sparse Damages, any type
- + Main Areas of Damage Increase

Shelter damage assessment



Damage Density as of 29.05.2015



Damage Increase From 12.02.2014 to 29.05.2015

Satellite Data: Pléiades - Date: 29.05.2015 -Resolution: 50 cm
Copyright CNES 2015 - Distribution Astrium Service / SPOT Image
Shelter Damage Assessment Data: UNOSAT/REACH
Projection: WGS 1984 UTM zone 37N
File: REACH_SYR_Map_Raqqa_ASMT_SDAcity_25JUN15_A3
Contact: reach.mapping@impact-initiatives.org

Note: Data, designations and boundaries contained in this map are not warranted to be error-free and do not imply acceptance by the REACH partners, donors and associated persons mentioned in this map.