



IDP Camp Profile - Bersive 2

Dahuk, Iraq
August 2016

Management agency: BRHA
Manager/Focal point: Mamoun Yahya Mehyaddin
Phone number: 7504590861
Email: n/a
Registration actor: BRHA

Summary

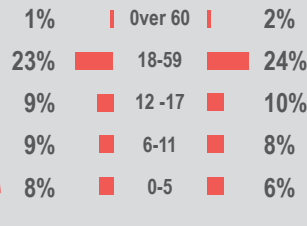
This profile provides an overview of conditions in Bersive 2 camp. Primary data was collected through household surveys on 23-08-16. Households were randomly sampled to a 95% confidence and 10% margin of error, based on population figures provided by CCCM. In some cases, additional information from camp managers has been used to support findings. Round V of data collection was in April 2016.

Camp Overview

of individuals: 9241
of households: 1650
Date opened: 28-08-14
Occupied number: 1820
Ongoing extension: No
Planned capacity: 1820
Camp area: 470,783

Demographics

50% male / 50% female

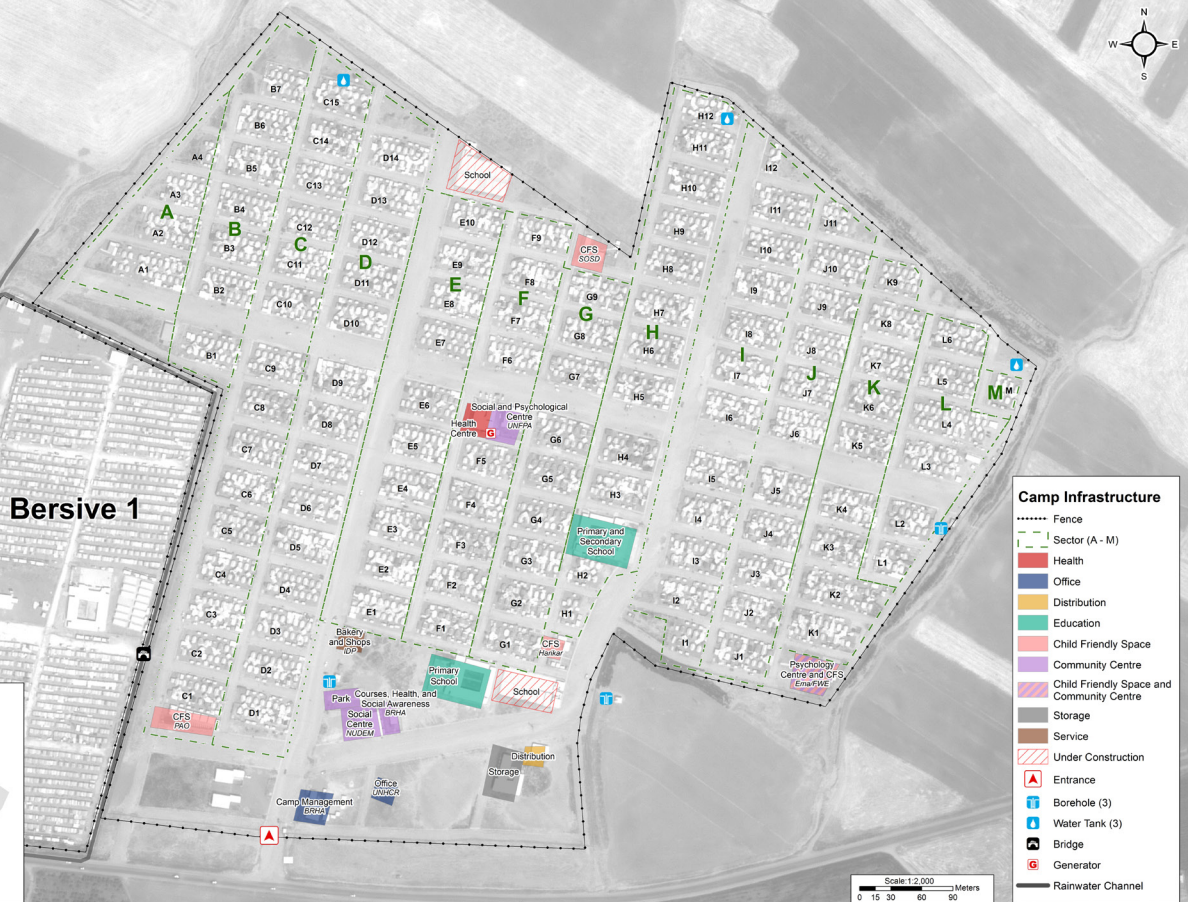
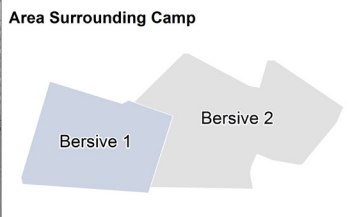
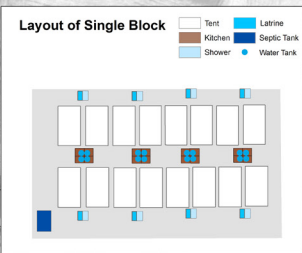


Location Map



IDP Camp Map - Bersive 2

Lat. 37° 10' 57.654" N Long. 42° 51' 51.759" E



Sectoral Minimum Standards

		Target	Previous Round	Current Round	Achievement
Education	% of children aged 6-11 attending formal school	100%	79%	88%	●
	% of children aged 12-17 attending formal school	100%	64%	77%	●
Food	% of households accessed Family Food Parcel or equivalent in the past month	100%	98%	99%	●
Health	Health services are available on-site or within walking distance	Yes	Yes	Yes	●
CCCM	Average open area per household	min. 30m ²	261m ²	248m ²	●
Protection	% of IDPs registered on an individual basis (MODM/DDM)	100%	98%	100%	●
	% of households accessed shelter assistance since arrival at the camp	100%	100%	82%	●
	Average covered area per person	min. 3.5m ²	3.8m ²	3.8m ²	●
Shelter	Average number of individuals per shelter	max.5	5	5	●
	# of persons per latrine	max. 20	9	10	●
	# of persons per shower	max. 20	10	10	●
WASH	Frequency of solid waste disposal at least weekly	min. weekly	Yes	Yes	●

*GPS tracking of camp infrastructure was not possible this round due to restrictions from authorities. Area calculations subsequently could not be determined.
Targets based on minimum standards agreed with the CCCM Cluster, Iraq. Findings based on household-level data, enumerator field observations, and camp management documentation
● Minimum standard reached, ● More than 50% minimum standard reached, ● Less than 50% of minimum standard reached or not at all





IDP Camp Profile - Bersive 2

Dahuk, Iraq
August 2016

Management agency: BRHA
Manager/Focal point: Mamoun Yahya Mehyaddin
Phone number: 7504590861
Email: n/a
Registration actor: BRHA

Shelter

Top three observed shelter types*

Tent with brick walls	100%	<div></div>
n/a	n/a	
n/a	n/a	

*Households were asked to select all shelter typologies within household.

Winterisation and NFI items

91%	reported a second fly sheet
97%	reported access to a heater
79%	reported at least one blanket per person
67%	reported at least one mattress per person
3.5	average number of carpets
53%	reported shelter provides warmth in winter

Hazards

8%	reported exposed electrical cables at site
----	--

Shelter Improvement

87%	reported making own improvements to their shelter
-----	---

Community Organisation

IDP committees

100%	reported awareness of IDP committee(s)
------	--

Complaints mechanism

100%	reported awareness of complaints mechanism
------	--

Protection

Family Separation

0%	reported hosting unaccompanied or separated minors
4%	reported that other family members intended to join them

Vulnerable groups

Pregnant / lactating women	22%	<div></div>
Chronically ill individual(s)	4%	<div></div>
Disabled individual(s)	3%	<div></div>
Female headed households	2%	<div></div>

Intentions

3%	planned to move to a different location in next 3 months
----	--

Restrictions

1%	reported entry or exit restrictions during daylight hours
----	---

Food Security and Coping Strategies

Reported access to food assistance

99%	accessed food assistance in past month
96%	received Public Distribution System (PDS) in past month

Top three food consumption coping strategies

Cheaper	51%	<div></div>
Borrowed	22%	<div></div>
Less meals	9%	<div></div>

Top three reported livelihood coping strategies

Debt	51%	<div></div>
Support from Family	19%	<div></div>
Sold Assistance	17%	<div></div>

WASH

Latrines and showers

49%	reported public or communal latrines
47%	public/communal latrines lockable from the inside
76%	public/communal latrines with functioning lighting

Top three reported methods of waste removal

Collected	41%	<div></div>
Communal bin	59%	<div></div>
n/a	n/a	

Reported drinking water sources

0%	connection inside the home to collective water storage
100%	connection inside the home to private water storage
0%	communal water tap outside the shelter

Access to water

4%	reported 24 consecutive hours without access to water in the past month
----	---

Household Income

15%	reported as being economically inactive
-----	---

Top three income sources*:

Public security official	27%	<div></div>
No livelihood	15%	<div></div>
Humanitarian Aid	13%	<div></div>

*Households were asked to select all income sources within household.

