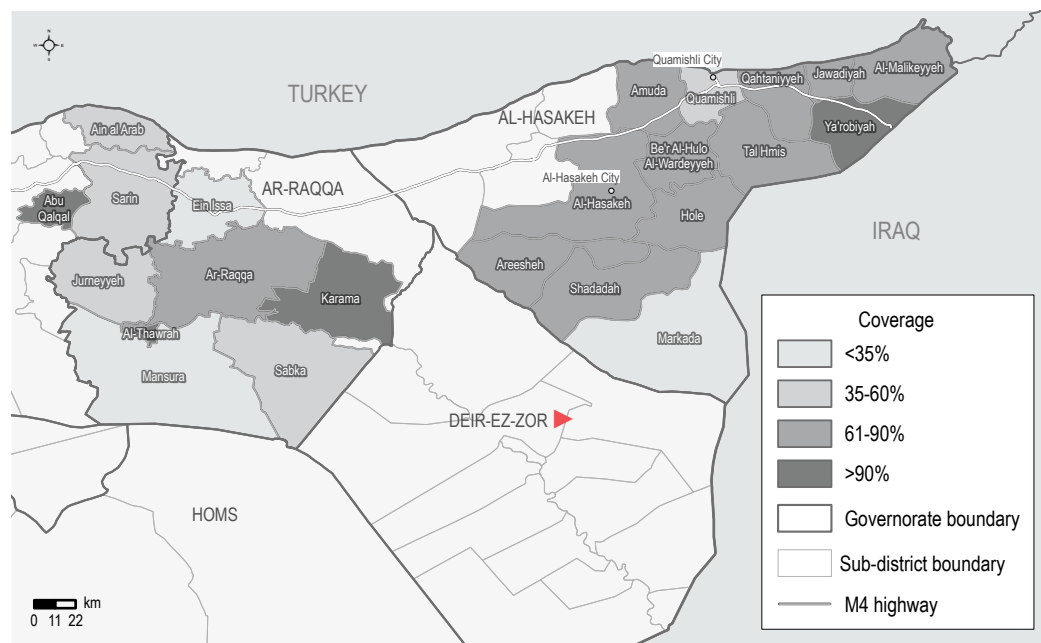


Introduction and Methodology

HSOS is a monthly assessment that provides comprehensive, multi-sectoral information about the humanitarian conditions and priority needs inside Syria. This factsheet presents a thematic review based on the HSOS assessment of the priority needs and humanitarian assistance, economic conditions, living conditions, access to basic services, COVID-19 situation, and security and protection situation in Northeast Syria (NES). **Sector-specific indicator findings by location can be found on the [HSOS dashboard](#).**

The assessment is conducted using a key informant (KI) methodology at the community level. REACH enumerators are based inside Syria and interview three to five KIs per assessed location, either directly or remotely (via phone). KIs are chosen based on their community-level and sector-specific knowledge. This factsheet presents information gathered in **1,121 communities** across Aleppo¹ (162 communities), Ar-Raqqa (261 communities), and Al-Hasakeh (698 communities). **Data was collected between 3-18 of April 2021 from 3,466 KIs** (20% female). Unless specified by an endnote, all indicators refer to the situation in the 30 days prior to data collection (March/April 2021). Findings are indicative rather than representative, and should not be generalized across the population and region. Findings that are calculated based on a subset of the community are indicated by the following footnote ♦, with each subset specified in the endnotes.

The **complete monthly HSOS dataset** is available on the [REACH Resource Centre](#).



Key Highlights

April findings highlight significant challenges for populations across NES as economic insecurity^a, access to sufficient water supplies^b, access to humanitarian services, and the COVID-19 pandemic^c continued to impact the humanitarian situation of households.

- **Healthcare, and livelihood needs were high**, while humanitarian assistance was reported in a limited number of communities. Among residents in assessed communities overall, healthcare and livelihoods were the highest priority needs reported in April. Likewise, among internally displaced persons (IDPs), the highest priority needs reported overall were livelihoods and healthcare. KIs in only 18% of communities assessed reported that resident households were able to access humanitarian assistance, with the number slightly higher among IDP households at 26%. Specifically, KIs in only 1-2% of communities reported the presence of healthcare or livelihoods assistance (both resident and IDP households), and 18% of communities reported access to food assistance for IDP households.^d

- **High prices and reduced access to livelihoods from agriculture compounded economic hardship.** Degradation of agricultural lands, crop damage and drought, caused significant challenges across NES. In nearly half of all communities assessed, residents reported soil and crop damage as barriers to accessing income. Further, KIs reported that in 82% of all communities (and 90% of communities hosting IDPs) daily wage labour was as a common source of income. At the same time, findings show that an average day-labourer would need to work approximately 70 days^e to earn the monthly cost of basic Survival Minimum Expenditure Basket (SMEB) items.^g The high cost of goods and services continues to be a challenge, with KIs reporting access barriers related to high costs for healthcare (87% of communities), food (83% of communities), and fuel for generators (48% of communities).

- **The lack of sustained water sources^f limited households' access to water.** Rising temperatures increased households' need for water, but in 61% of the assessed communities, a proportion of households were reportedly unable to access sufficient quantities of water. Further, KIs in 27% of assessed communities reported problems with the water quality, with the most commonly cited problem being the poor taste. Adjustments in hygiene practices were reported, including a reduction in bathing (23% of assessed communities), reduced laundry washing (24% of assessed communities) and reduction in drinking water consumption (8% of assessed communities). Of the 675 assessed communities connected to a water network, only 22% reported access to water each day of the week, while 19% reported no access to water from the network. Notably, over half of those communities reported access to water from the network for only 3-4 days or less per week.

- **The continued spread of COVID-19 combined with economic insecurity presents significant challenges.** High prices and low purchasing power linked to economic insecurity have made essential hygiene items unaffordable for most. KIs reported that soap was unaffordable for the majority of households in nearly 80% of the assessed communities. Moreover, overcrowding in schools (reported in 62% of communities) and overcrowding due to shelter inadequacies (reported in 55% of communities) present additional challenges to containing the spread of the virus.

HSOS Dashboard

For a breakdown of sector-specific indicators by location, please see the [HSOS dashboard](#). The interactive HSOS dashboard provides a monthly sectoral overview of key indicators disaggregated at the sub-district and community level.



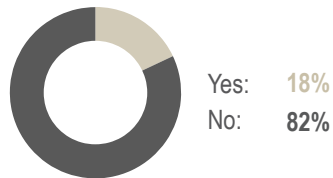
Priority Needs and Humanitarian Assistance



Most commonly reported **first, second, and third** and **overall** priority needs for residents (by % of communities) ^{2,3}

	FIRST	SECOND	THIRD	OVERALL	
1	Healthcare	Livelihoods	Livelihoods	Livelihoods	70%
2	WASH [▲]	Healthcare	Healthcare	Healthcare	68%
3	Food	WASH	Infrastructure	WASH	55%

% of communities where any of the resident households were able to access humanitarian assistance



% of communities where KIs reported the presence of the following **types of assistance** for residents ⁴

- 2% | Livelihoods
- 1% | Healthcare
- 1% | WASH

Most commonly reported barriers that resident households faced in accessing humanitarian assistance (by % of communities) ^{4,♦}

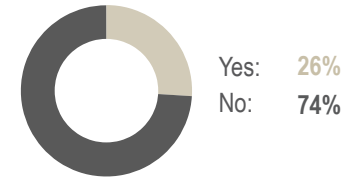
Communities reporting access to humanitarian assistance	Communities reporting no access to humanitarian assistance
Assistance provided was not relevant to all needs 50% 1	95% No humanitarian assistance was available
Quantity of assistance provided to households was insufficient 45% 2	4% Not aware if assistance was available
Assistance provided was insufficient to cover all people in need 42% 3	1% Perceived discrimination in provision of humanitarian assistance



Most commonly reported **first, second, and third** and **overall** priority needs for IDPs (by % of communities) ^{2,3}

	FIRST	SECOND	THIRD	OVERALL	
1	Food	Livelihoods	Livelihoods	Livelihoods	77%
2	Healthcare	Healthcare	Healthcare	Healthcare	63%
3	Livelihoods	WASH	WASH	Food	60%

% of communities where any of the IDP households were able to access humanitarian assistance



% of communities where KIs reported the presence of the following **types of assistance** for IDPs ⁴

- 2% | Livelihoods
- 2% | Healthcare
- 18% | Food

Most commonly reported barriers that IDP households faced in accessing humanitarian assistance (by % of communities) ^{4,♦}

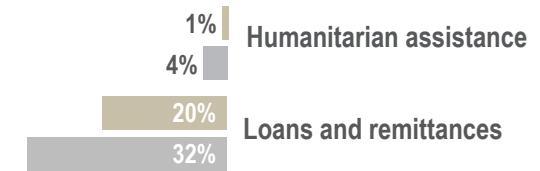
Communities reporting access to humanitarian assistance	Communities reporting no access to humanitarian assistance
Assistance provided was not relevant to all needs 49% 1	96% No humanitarian assistance was available
Quantity of assistance provided to households was insufficient 44% 2	2% Not aware if assistance was available
Assistance provided was insufficient to cover all people in need 32% 3	1% People did not comply with the eligibility criteria



Economic Conditions

Region	Estimated median monthly household expense for water for a household of six ^{5,6}	Estimated median monthly rent price for a two bedroom apartment ^{5,6}	Estimated median daily wage for unskilled labour ^{5,7,8}
Northeast Syria	10,000 SYP	30,000 SYP	5,000 SYP
Aleppo	3,000 SYP	25,000 SYP	5,000 SYP
Al-Hasakeh	16,000 SYP	50,000 SYP	5,000 SYP
Ar-Raqqa	1,500 SYP	25,000 SYP	5,000 SYP

% of communities where KIs reported the presence of residents and IDP households relying on non-productive sources of livelihoods to meet their basic needs ⁴



% of communities where barriers to accessing income from agriculture to meet basic needs were reported ⁴

Residents

28%

Lack of access to resources

47%

Seasonality of production

48%

Degradation of agricultural lands/ crop damage

5%

High rates of livestock death

IDPs

9%

17%

9%

1%

82% and 90%

% of communities where KIs reported daily waged labour as a common source of income for residents and IDPs

70 days

Number of days the average day labourer would need to work to earn the monthly cost of basic SMEB items ^{5,9}

89% and 67%

% of communities where KIs reported the insufficient income of households and lack of employment opportunities that match people's skills as barriers to meeting basic needs ⁸

% of communities where common livelihood sources from agriculture were reported ⁴

Livelihood source	Residents	IDPs
Food from crop production	39%	24%
Cash from crop production	65%	4%
Livestock products	77%	33%
Sale of livestock	60%	24%

Intersectoral findings on **unaffordability** hindering access to goods and services



KIs in **18%** of communities cited that **rent prices** were unaffordable for the majority of people



KIs in **48%** of communities cited the high cost of **fuel for generators** as a common challenge



KIs in **34%** of communities cited the high cost of **water trucking** as a common challenge



KIs in **83%** of communities cited the high cost of **food** as a common challenge ⁸



KIs in **87%** of communities cited the high cost of **health services** as a common challenge



KIs in **30%** of communities cited the high cost of **a private tutor** as a common challenge ⁸



Living Conditions

- In 93% of communities reportedly at least 80% of the resident population owned their shelter
- In 86% of communities reportedly none of the IDP households owned their shelter
- In 3% of communities at least one fifth of the IDP population reportedly lived in unfinished or abandoned residential buildings
- In 12% of communities at least one fifth of the IDP population reportedly lived in tents



A lack of toilets was reported as a shelter issue for IDPs in 24% of communities



A lack of bathing facilities was reported as a shelter issue for IDPs in 13% of communities

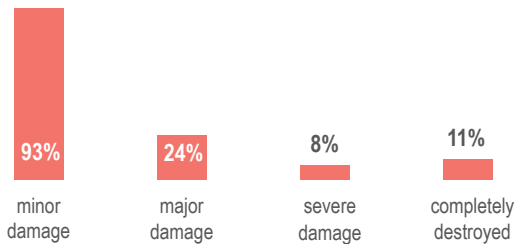


Problems with the drinking water were reported in 27% of communities



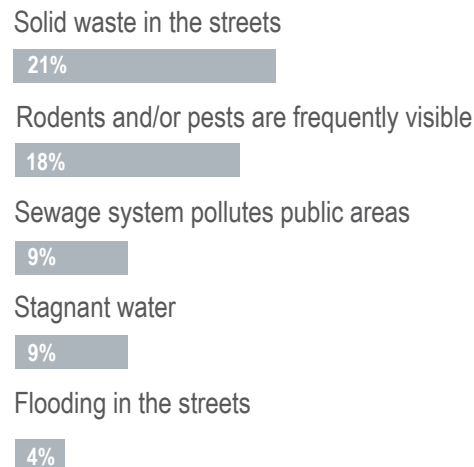
Water tasting bad was the most commonly reported problem with drinking water (reported by KIs in 15% of communities)

Reported presence of occupied shelters with damage across communities where damages were reported (by % of communities) ^{5,10}



Shelter and repair materials being too expensive was the most commonly reported challenge for households to repair their shelter (reported by KIs in 92% of communities) ⁴

Reported sanitation issues affecting public space in the community (by % of communities) ⁴



98% of communities where KIs reported that households experienced barriers to accessing sufficient food ⁸



In 22% of these communities, KIs reported that the unavailability of certain food items was a challenge to accessing sufficient food ⁸

Most commonly reported coping strategies for a lack of food (by % of communities) ⁴

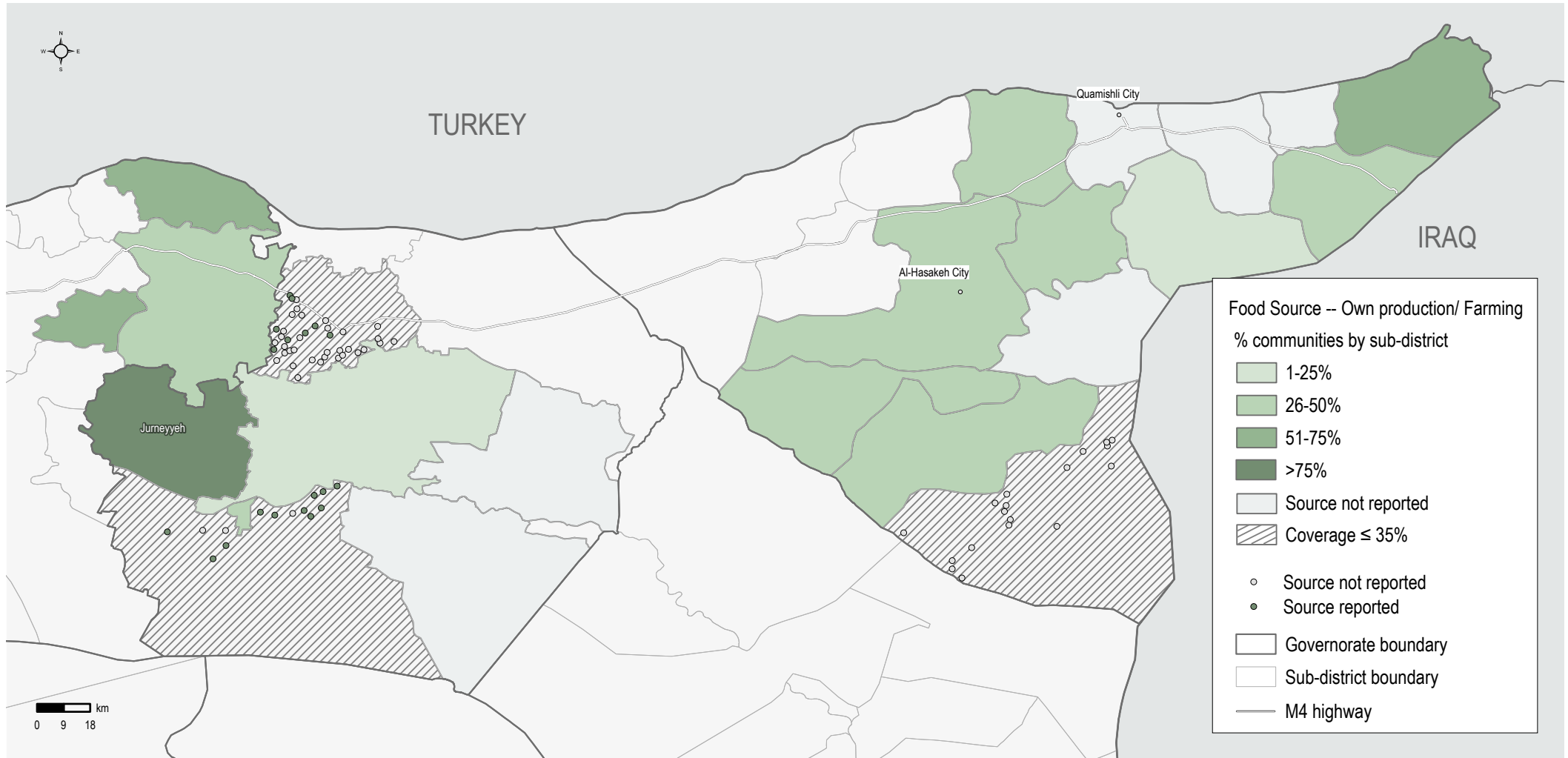
- 1 Borrowing money to buy food 72%
- 2 Relying on less preferred food lower food quality 68%
- 3 Buying food with money usually used for other things 62%



High price of suitable foods formula was the most commonly reported challenge to feeding young children (reported by KIs in 96% of communities) ^{4,11}

Commonly reported sources of food for households other than markets (by % of communities) ⁴

- 1 Borrowing money for food 51%
- 2 Own production or farming 32%
- 3 Relying on food stored previously 27%



Own Production or Farming as Source of Food

Note on the map

This map shows the percentage of communities reporting own production or farming as one of the three most common sources of food for households in the last 30 days. In Jurneyyeh Sub-district, 88% of the assessed communities reported this source of food for households.



Access to Basic Services



Access to Electricity

5-6 hrs per day

was the most commonly reported range for hours of electricity accessible to households (reported by KIs in 31% of communities)

Main network

was the most commonly reported main source of electricity (reported by KIs in 86% of communities)

68%

% of communities where KIs reported **local authorities rationing electricity** as a barrier for electricity access



Access to Water

61%

% of communities where KIs reported that **not all households** had access to sufficient water



Days per week where water from the network was available (by % of 675 communities connected to a water network)

Piped water network

was the most commonly reported source of drinking water (reported by KIs in 40% of communities)

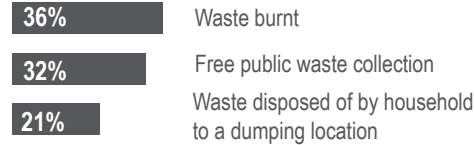


Access to Sanitation

85%

% of communities where KIs reported that **no sewage system was present**

Most commonly reported ways people disposed of solid waste (by % of communities)



36%

% of communities where KIs reported waste removal services as a WASH priority need ⁸



Access to Markets

38%

% of communities in which households reportedly were **unable to access markets in the assessed location**

Not enough consumers to support markets in the assessed location

was the most commonly reported **reason for why markets were not functioning** (reported by KIs in 82% of communities where households were unable to access markets in their own location)

79%

% of communities where KIs reported that the **lack of transportation to markets** was a barrier to physically accessing food markets

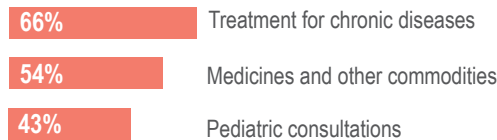


Access to Health Services

78%

% of communities where KIs reported that the **households did not have access to health services in the assessed location**

Most commonly reported health priority needs (by % of communities) ⁸



Going to the pharmacy instead of a clinic

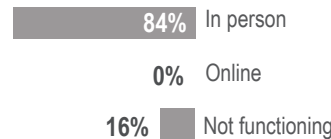
was the most commonly reported coping strategy for a lack of healthcare (reported by KIs in 91% of communities)



Access to Education Services

27%
68%

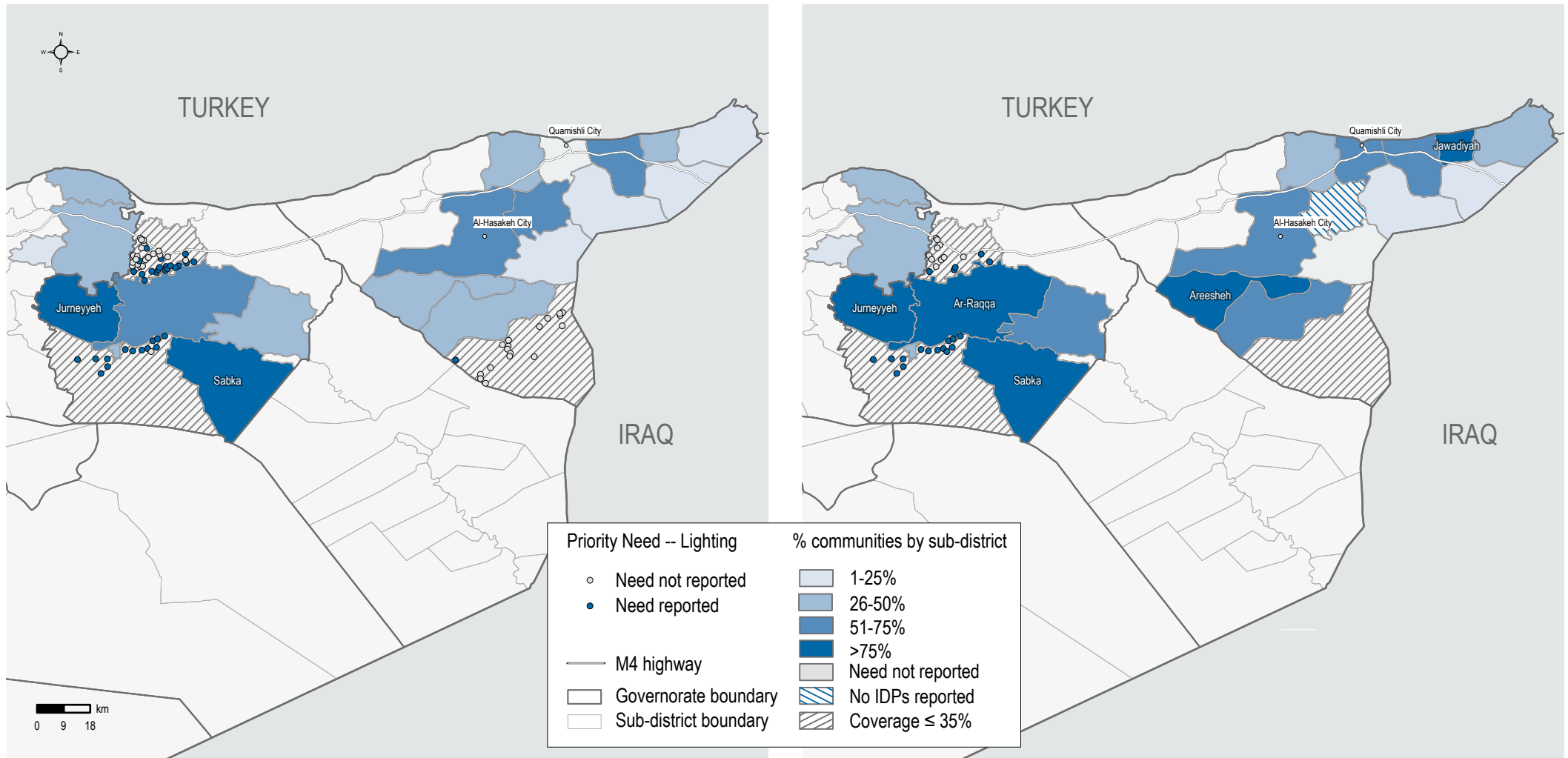
% of communities in which **half or less of the school aged-children accessed school** in the last 30 days for **residents and IDPs**



% of communities where KIs reported on the functioning of education services in the assessed location ⁴

63%

% of communities where KIs reported that the **high cost of transportation to school** was a barrier to accessing education services ⁸



Additional Lighting in the Community as Infrastructure Priority Need

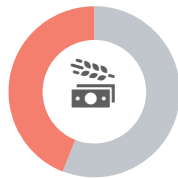
Note on the map

These maps show the percentage of communities reporting additional lighting in the community as an infrastructure priority need. KIs in all assessed communities in Sabka Sub-district reported additional lighting in the community as an infrastructure priority need for both residents and IDPs.



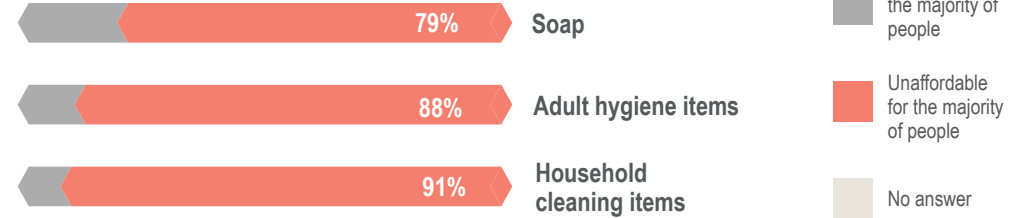
COVID-19

Effects of COVID-19 on livelihoods sectors in the community (by % of communities)

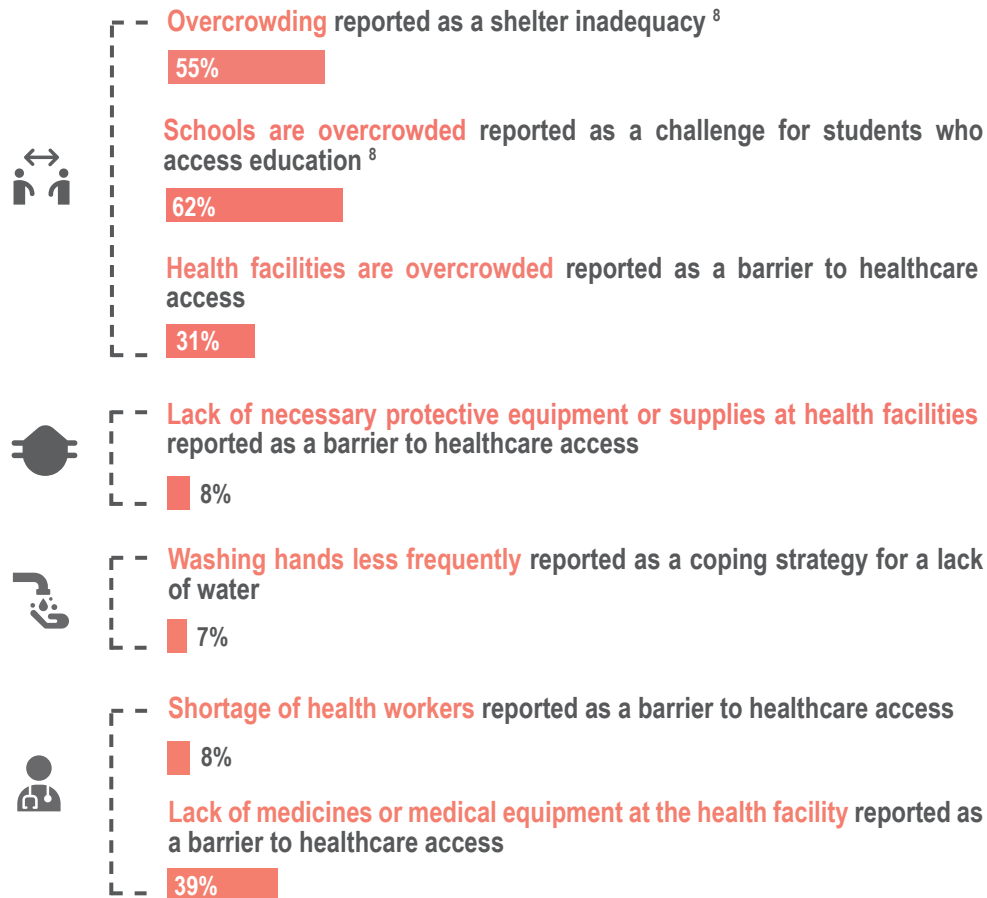


None of the available livelihood sectors were affected 56%
At least one of the available livelihood sectors was partially or totally affected 44%

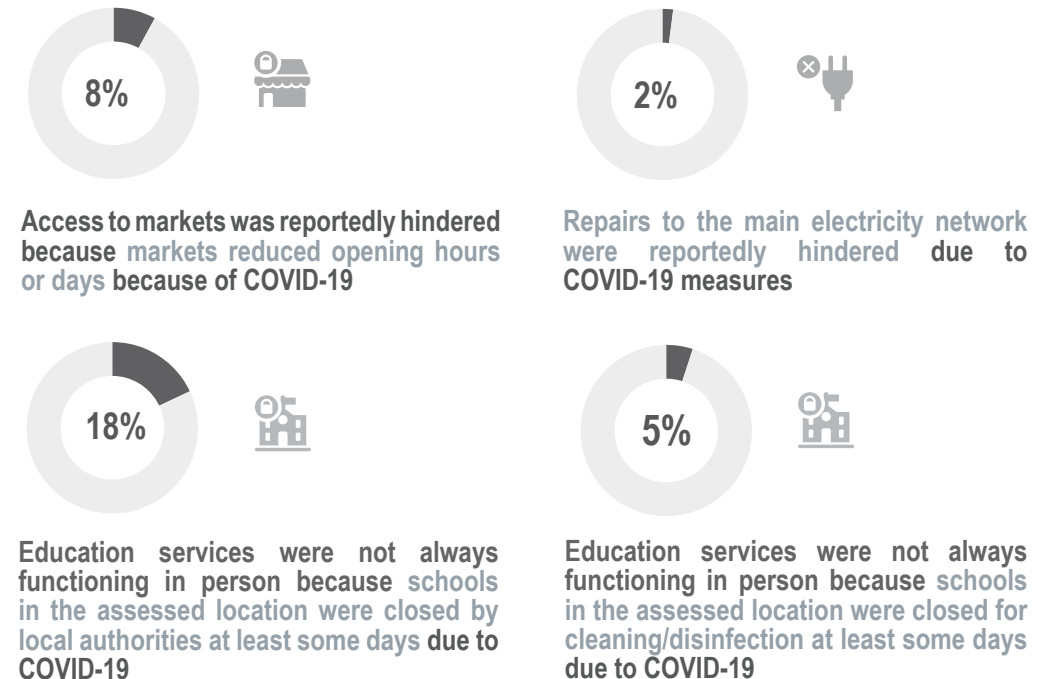
Reported hygiene item availability and affordability (by % of communities) ¹²

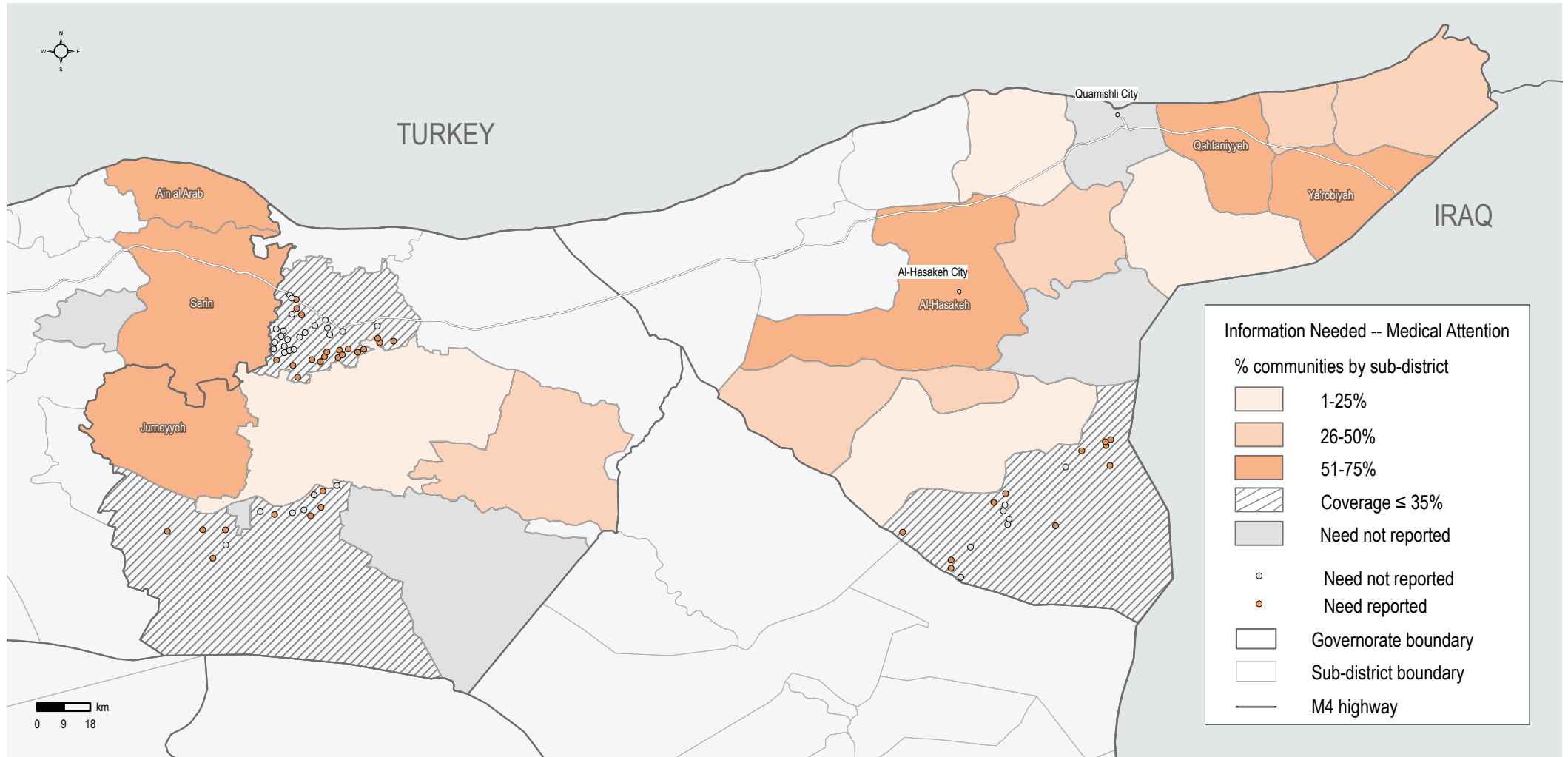


% of communities where COVID-19 risk indicators were reported



% of communities where COVID-19 related barriers to access services were reported





Missing Information: Where to Get Medical Attention

Note on the map

This map shows the percentage of communities reporting information on where to get medical attention as one of the five most important missing information to provide to households in the location. In Ain al Arab, Al-Hasakeh, Jurneyyeh, Qahtaniyyeh, Sarin, and Ya'robiyah Sub-districts, more than 50% of the assessed communities reported this information need.



Security and Protection

Intersectoral findings on security

-  **General safety and security concerns restricting movement to markets** was a reported barrier to market access in **65** communities
- General safety and security concerns at markets** was a reported barrier to market access in **4** communities
- Movement restrictions** was reported as a protection risk in **1** community⁸
-  **Tribal disputes** were reported as a protection risk in **1** community⁸
- Threat from shelling** was reported as a protection risk in **13** communities⁸
- Fear from imminent conflict** was reported as a protection risk in **38** communities⁸
-  **The inability to lock homes securely** was reported as a shelter inadequacy in **26%** of communities⁸
- Lack of Privacy inside the shelter** was reported as a shelter inadequacy in **57%** of communities⁸
- Lack of lighting around the shelter** was reported as a shelter inadequacy in **78%** of communities⁸
- The security situation** was reported as a barrier to shelter repairs in **2%** of communities
-  **Safety and security concerns travelling to health facilities** was reported as a barrier to healthcare in **11** communities

Most commonly reported protection priority needs

(by % of communities)^{3,8}

- 1 74%** Special assistance for vulnerable groups
- 2 41%** Specialised child protection services
- 3 33%** Psychosocial support



% of communities where the lack of civil documentation for residents and IDPs was reported

- 12%** Lack or loss of civil documentation as a protection risk
- 14%** Lack of personal documentation required to enrol in school as a barrier to education access
- 1%**
- 4%**

% of communities where extreme coping strategies used by residents and IDPs to meet basic needs were reported⁴

Residents

- 16%** Early marriage
- 2%** Forced marriage
- 5%** High risk work
- 0%** Sending family members to beg
- 48%** Sending children (15 or below) to work

IDPs

- 9%**
- 0%**
- 4%**
- 0%**
- 53%**

Age, Gender, and Diversity

- KIs in **32%** of communities reported a **lack of employment opportunities for women** as a barrier to meeting basic needs⁸
- KIs in **19%** of communities reported a **lack of employment opportunities for persons with a disability** as a barrier to meeting basic needs⁸
- KIs in **10%** of communities reported a **lack of privacy for women and girls at health facilities** as a barrier to healthcare access
- KIs in **21%** of communities reported a **lack of market access for people with restricted mobility**

- Child labour** and **early marriage** were reported to prevent children from going to school in **59%** and **13%** of communities⁸
- Children below the age of 12** were reported as a group affected by child labour in **11%** of communities⁸
- Hazardous child labour** was reported as a protection risk in **36** communities⁸

Endnotes

1. Aleppo governorate includes Menbij and Ain Al Arab districts. The rest of Aleppo governorate is included under Northwest Syria.
2. KIs were asked to select a first, second, and third highest priority needs in their communities. The ranking shows the sectors most frequently chosen as either first, second or third highest priority. The overall priority need refers to the frequency a sector was selected across all three categories (first, second or third highest priority).
3. KIs could select three answers, thus findings might exceed 100%.
4. KIs could select multiple answers, thus findings might exceed 100%.
5. KIs were asked about the situation currently, instead of the last 30 days.
6. KIs had the option to select the price in United States Dollars (USD), Turkish Lira (TRY), or Syrian Pounds (SYP). When the price was not reported in SYP, the NES REACH Market Monitoring exchange rate was used to calculate the amount in SYP. According to the REACH Market Monitoring April 2021, 1 USD = 3,413 SYP; 1TRY= 427 SYP.
7. According to the NES REACH Market Monitoring April 2021, 1 USD = 3,413 SYP.
8. Findings for residents and IDPs were merged. The merge was calculated as follows: (option was selected for either residents or IDPs) / (communities reporting challenges/barriers/coping strategies for either residents or IDPs).
9. According to the NES REACH Market Monitoring April 2021, the Survival Minimum Expenditure Basket (SMEB) = 350,898 SYP.
10. Minor damage (cracks in walls, leaking roof, need of new doors and window repairs, etc.); Major damage (buildings with extensive damage to window frames and doors, but no structural damage to columns, slabs, or loadbearing walls); Severe damage (buildings with significant structural damage to column slabs, or loadbearing walls, cracking, steel elements and deformations visible in concrete; the building would require extensive repairs); Completely destroyed (buildings with structural damage so significant that rehabilitation is not possible).
11. KIs were asked about the situation in the last two months, instead of the last 30 days.
12. Adult hygiene items include: shampoo, toothbrush, and toothpaste. Household cleaning items include: washing powder, liquid, and dish detergent.

◆ By number of communities where KIs reported the relevant indicator (accesss/barriers/inadequacies/damages/coping strategies/risks etc.) for the relevant population group(s)

Indicator N.o of communities reporting on:	Subset	Indicator N.o of communities reporting on:	Subset
Residents	1,121	Barriers to assistance access (IDPs)	328
IDPs	445	Barriers to accessing sufficient food (merge)	1,098
Challenges to assistance access (resident)	181	Days when water is available from network	675
Barriers to assistance access (resident)	923	Barriers to markets functioning	427
Challenges to assistance access (IDPs)	108		

- a. United Nations Office for the Coordination of Humanitarian Affairs. (26 March 2021). Recent Developments in Northwest Syria, Situation Report No. 26 - As of 26 March 2021. Retrieved from <https://reliefweb.int>
- b. United Nations Office for the Coordination of Humanitarian Affairs. (28 April 2021). Syria: Disruption to Alouk Water Station - Flash update #01 - As of 28 April 2021. Retrieved from <https://reliefweb.int>
- c. United Nations Office for the Coordination of Humanitarian Affairs. (28 April 2021). Under-Secretary-General for Humanitarian Affairs and Emergency Relief Coordinator, Mark Lowcock - Briefing to the Security Council on the humanitarian situation in Syria. Retrieved from <https://reliefweb.int>
- d. The presence of healthcare and livelihoods assistance is understood to be at least partially affected by KI perception and a variety of unique circumstances facing households. These may include unequal degrees of access, disparities in the level of awareness about available services, and potentially unclear definitions for what constitutes assistance.
- e. The days of work required by an average day labourer to afford the cost of the SMEB dropped from 78 to 70 days compared with last month, while the price of the SMEB remained stable.
- f. Reasons that people struggle to access water include the lack of sustained and functional infrastructure and disruptions to services including the water network. Please see the United Nations Office for the Coordination of Humanitarian Affairs (28 April 2021) Flash Update #01, Disruption to Alouk Water Station report for further information <https://reliefweb.int>.

About REACH

REACH facilitates the development of information tools and products that enhance the capacity of aid actors to make evidence-based decisions in emergency, recovery and development contexts. The methodologies used by REACH include primary data collection and in-depth analysis, and all activities are conducted through inter-agency aid coordination mechanisms. REACH is a joint initiative of IMPACT Initiatives, ACTED and the United Nations Institute for Training and Research - Operational Satellite Applications Programme (UNITAR-UNOSAT). For more information please visit our website: www.reach-initiative.org. You can contact us directly at: geneva@reach-initiative.org.